



Expertise

Protocol number: 41331088  
Order No. / Reference: 25046048  
Inspection date: 1 Sept 2025

Manufacturer: Mercedes-Benz

Model: C 220 d T 9G-TRONIC Avantgarde

VIN: W1K2052141G033084



Vehicle details	
Manufacturer / Type / Model / Equipment	
Mercedes-Benz C 220 d T 9G-TRONIC Avantgarde	
Vehicle Identification number	W1K2052141G033084
Mileage (Read)	150,877 km
First registration	16 Jul 2020
Number of holders	2
Next periodical technical inspection	09/2025
(Report not on hand)	
Power / Engine displacement	143 kw / 1,950 ccm
Fuel type / Cylinder	Diesel / 4
Gearbox / Number of gears	Automatic / 9
Type of drive	Rear drive
Type of vehicle	Station wagon
Colour / colour code	OBSIDIANSCHWARZ - METALLICLACK
Doors / Seats	5 / 5
Upholstery type	Cloth
Colour of upholstery	Black-Anthracite
Vehicle with smoke odor	no



## Vehicle details

<b>Maintenance booklet / proof</b>	digital proof / complete	<b>Next maintenance in</b>	109 Tag(e)
<b>Last maintenance on / at</b>	12/2024 at 137,991 km		
<b>Key is / should be</b>	2 / 2	<b>FZG documents</b>	ZB#2 (B) was available (copy), ZB#1 (S) was not available
		<b>Letter No.</b>	FT809075
<b>Previous damage / Accident</b>	Detectable	<b>Repainting</b>	None detectable
<b>Inspection conditions</b>	sufficient	<b>Lifting equipment / pit</b>	yes
<b>Test drive</b>	Not performed	<b>Engine function test</b>	Performed
<b>Manufacturer key number/ type code number</b>	2222 / ALC 00165		
<b>Emission standard</b>	EURO6;WLTP;AP;PI/CI; M, N1 I	<b>Fine dust sticker</b>	
<b>Permitted total weight</b>	2,235 kg	<b>Empty weight</b>	

## Tyres

### Mounted tyres

#	Tyre size	Type of tyre	Manufacturer	Tread depth
1)	225/50 R17 98Y	Summer tyres on Light alloy	Fulda	6mm / 6mm
2)	225/50 R17 98Y	Summer tyres on Light alloy	Fulda	4mm / 4mm

### Additional tyres

#	Tyre size	Type of tyre	Manufacturer	Tread depth
1)	205/60 R16 92H	Winter tyres on Light alloy	Goodyear	6mm / 6mm
2)	205/60 R16 92H	Winter tyres on Light alloy	Goodyear	7mm / 7mm

### Replacement

Typ	Tyre size	Type of tyre	Manufacturer	Tread depth
	Tirefit			

**Legend:** Tread depth information for tires on the left is in the first place, for tires on the right is in the second place on the axle in the direction of travel

## Equipment

### Standard equipment

- Storage compartment under loading floor
- Airbag (driver airbag - passenger airbag - sidebags for driver and passenger (combined thorax/pelvis bag) - windowbags left/right - kneebag for driver)
- Anti-lock braking system (ABS)
- Armrest for driver and passenger foldable with compartment
- Left and right exterior mirrors, heated, electrically adjustable, painted in body color (with aspherically curved mirror glass and integrated indicator light)
- Brake Assist, Active (Collision warning including Adaptive Brake Assist and autonomous partial braking to mitigate or prevent collisions)
- DYNAMIC SELECT (consisting of 5 driving programs)
- Electronic Stability Program (ESP) with Crosswind Assist (with Curve Dynamics Assist)
- Pedestrian protection (active bonnet) (If a pedestrian collides head-on with the vehicle, the rear of the bonnet is raised. The increased distance to the components in the engine compartment creates additional deformation space to reduce the risk of injury to pedestrians in certain accident situations.)
- Heated rear window with timer control
- Rear window wiper with interval control (and automatic activation when reversing)
- Mechanical child safety lock for the rear doors
- Climate: THERMATIC automatic climate control with 2 climate zones (temperature can be regulated separately for driver and front passenger - fine dust activated carbon filter for dust and odor reduction - air recirculation switch with comfort function - sun and dew point sensor - rear compartment ventilation nozzles)
- Remote trunk lid release
- Instrument cluster with 2 tube-shaped round instruments (and 13.97 cm (5.5") multifunction display and frame in silver chrome (Lines))
- Steering wheel: Multifunction sports steering wheel in black leather, 3-spoke design
- Steering: Direct-steer (with speed-dependent power assistance and variable steering ratio)
- Package: AVANTGARDE Exterior (radiator grille with integrated Mercedes star and 2 slats in matt iridium silver with chrome inserts, 17" LMR in 5-spoke design, 225/50 R 17 on 7Jx17 ET 48.5, black high-gloss paint, dynamic front bumper with decorative trim (wing) and diamond-pattern air intakes, rear bumper in body color, in 2 versions, beltline trim and window surround in polished aluminum, B-pillars in black, side skirts in body color with chrome inserts, aluminum roof rails, AGILITY CONTROL suspension with selective damping and lowering)
- ADAPTIVE BRAKE with hill start assist, pre-filling and dry braking in wet conditions
- Airbag: Automatic passenger airbag deactivation (If the passenger seat is unoccupied or a child seat is detected, the passenger airbag is automatically deactivated.)
- Armrest in the rear with compartment and cup holder
- ATTENTION ASSIST (the attention assistant) (can detect typical signs of fatigue through driver behavior and warn the driver of increasing fatigue or inattention)
- Outside temperature display
- diesel particulate filter
- tachometer
- Third brake light in LED technology
- ECO start-stop function
- Driving light assistant
- 4-way electric window lifter (with comfort operation and anti-pinch protection)
- Luggage net on the left side of the trunk (with two hooks)
- Transmission: Automatic 9-speed, 9G-TRONIC (including DIRECT SELECT selector lever and DIRECT SELECT steering wheel shift paddles)
- Halogen headlights with integrated LED daytime running lights (manual headlight range adjustment)
- Interior headliner fabric crystal grey
- KEYLESS-GO start function (including convenient opening and closing). This system allows the vehicle to be started simply by carrying the electronic key, which stores the access and drive authorization functions. To do this, the driver presses the start/stop button in the ignition lock once while holding down the brake pedal. In the Cabriolet, the convertible top can also be operated from the outside using the vehicle key using the open/close buttons on the driver's side.
- 5-way headrests for driver and front passenger 4-way adjustable and 2-way in the rear
- Load compartment cover including EASY-PACK safety net
- Steering column mechanically adjustable in height and length
- Mercedes-Benz Emergency Call System (In the event of an accident, the Mercedes-Benz Emergency Call System can significantly shorten the time it takes for emergency services to arrive at the scene. Data is transmitted via a communications module with its own SIM card. No mobile phone is required.)
- Package: Interior lighting package (front footwell lights - light in the center console storage compartment - rear reading lights in the grab handles with LED technology - handle recess lighting in the doors - cosmetic mirror lighting in the roof unit)
- Upholstery: ARTICO man-made leather/Norwich fabric



- Radio: Audio 20 GPS (High-resolution media display with 17.8 cm (7") screen diagonal - Radio - Bluetooth connection option for up to two smartphones in parallel - Controller as central operating system - Two USB ports under the armrest - Sound system with four midrange speakers in the doors and a front bass - MP3 - Hands-free system)
- Tire pressure monitoring (TPMS)
- Travel calculator in the multifunction display (with current consumption display)
- C-Class seat belts (3-point seat belts including mechanical belt height adjustment for driver and front passenger and automatic belt height adjustment in the rear outside, as well as belt tensioners with belt force limiters for driver and front passenger)
- Cruise control with HOLD function (with variable speed limiter SPEEDTRONIC)
- Vehicle Setup Pre-installation (Full control, anytime, anywhere: With the Vehicle Setup app on your smartphone, you can remotely change settings and access information. For example, you can adjust the interior temperature, send addresses to your navigation system, or lock the doors.)
- High-visibility vest for drivers
- Green heat-insulating glass all around including rear window made of toughened safety glass
- Decorative elements in black piano lacquer look / light aluminium with longitudinal grain

#### Extra equipment

- EASY-PACK tailgate (with electric opening and closing and electric load compartment blind)
- Paint finish: metallic
- Package: Advanced Lighting Package (consisting of: LED High Performance headlights including integrated LED daytime running lights, Adaptive High Beam Assist. Whenever the Adaptive High Beam Assist detects no vehicles ahead or oncoming traffic, it switches on the high beam.)
- Package: Advanced Parking Package (12 sensors - Active Parking Assist: Detects parking spaces up to 35 km/h, controls the steering, in conjunction with automatic assists with accelerating, braking, and gear changes - PARKTRONIC: Visual/acoustic warning of detected obstacles in front of/behind the vehicle up to approx. 10 km/h - Rear Cross Traffic Alert provides visual and acoustic warnings when cross traffic is detected - Drive Away Assist (only in conjunction with automatic transmission) - Button on the center console or on the control panel for the assistance systems - Rear view camera)

- Radio accessory: Communication module (LTE) for using Mercedes me connect services (The communication module (LTE) offers you a clear advantage in terms of convenience and safety. It constantly connects the vehicle to the internet, allowing you to use helpful services such as Live Traffic Information from Mercedes me connect. Two mobile antennas and an LTE-capable SIM card ensure a fast connection.)
- Windscreen wipers with rain sensor
- Service interval display ASSYST
- Seats: Rear seat backrests foldable 40/20/40 split
- Seats: ISOFIX child seat attachment with Top Tether in the rear
- Seats: Front seats electrically adjustable (electric adjustment for seat height and backrest angle - mechanical for longitudinal adjustment and headrests)
- Pre-installation for vehicle monitoring (Vehicle monitoring connects you to your car and ensures you have a permanent information advantage. This way, you know where your vehicle is at all times and can even determine which area it is allowed to stay in. You will also be immediately informed of any unwanted movements.)
- Electronic immobilizer
- Central locking (with interior switch, automatic locking (can be deactivated) and crash sensor with emergency opening)

- Chassis: AGILITY CONTROL chassis with selective damping system with lowering
- Package: Storage (Luggage net on the side of the trunk on the right side panel, net on the trunk floor, folding box under the loading floor, double cup holder in the center console for 2 x 500 ml (with 6-speed manual transmission), double cup holder in the center console for 2 x 750 ml (with automatic transmission), luggage net in the passenger footwell, map pockets on the back of the front seats, 2 USB ports with charging function)
- Package: Assistance package (Mirror package: - Interior and exterior mirrors on the driver's side with automatic dimming - Exterior mirrors left and right with electrical folding - Parking position on the right and ambient lighting in the exterior mirrors - Curbside adjustment - Automatic lowering of the passenger mirror glass to "curbside adjustment" when reverse gear is engaged Lane package: - Active Lane Keeping Assist and Blind Spot Assist)



- Package: High-End Infotainment Package (Smartphone Integration Package - Apple CarPlay, Android Auto, high-resolution 10.25" media display, COMAND Online, touchpad with controller and LINGUATRONIC voice control system, hard drive navigation with satellite map display, Bluetooth hands-free system, Remote Online, SD interface, 2 USB ports, WLAN/WIFI hotspot, live traffic, office functions in the vehicle, Microsoft Office 365 functionality, concierge service, advanced navigation services including traffic sign assistance).
- Package: Comfort package (seat heating for driver and front passenger Seat comfort package for driver and front passenger: - electro-pneumatic 4-way lumbar support with control element on the seat - electric seat cushion tilt adjustment - mechanical seat cushion depth adjustment by 6 cm)
- TIREFIT with tire inflation compressor
- Heat-insulating dark tinted glass all around from B-pillar
- Package: Business PLUS (Parking Package - Active Parking Assistant - Advanced Infotainment Package - Smartphone Integration Package - Apple CarPlay, Android Auto, Media Display with 10" high-resolution media display, 25" diagonal, SD card navigation, Live Traffic Pre-installation - Comfort Package - Heated seats for driver/passenger, Seat Comfort Package for driver/passenger: - Electric 4-way lumbar support - Electric seat cushion tilt and mechanical seat cushion depth adjustment by 6 cm - Fuel tank with larger capacity (not for 300e/de) - Lighting Package - LED high-performance headlights, LED daytime running lights)
- Heated windshield washer system (with heated washer fluid reservoir and heated washer nozzles and hoses. The washer nozzles, washer fluid reservoir, and washer hoses are heated in this windshield washer system, providing better protection against icing. This makes it easier to clean the windows at low temperatures.)
- Elimination of type marking on the trunk lid

## Brief expert findings

Documents submitted	At the time of the inspection, the registration certificate Part 2 (letter) was available, but the registration certificate Part 1 (certificate) was not. (Copy)
VIN comparison	The vehicle identification number (VIN) was read from the vehicle and its conformity with the submitted documents was verified during the inspection by the undersigned.
Inspection	The inspection conditions were sufficient for the assessment of the vehicle. Lifting equipment and a pit were available for examining the vehicle.
Test drive	No test drive/maneuvering was carried out during the inspection of the vehicle.
Engine function test	An engine test run was performed.

## Value reducing factors

No.	Component group	Description
1	Equipment	Tirefit filler (Ausgelaufen) - Damaged - Replace
2	Sill - right side	Sill - Scratched - Smart repair
3	Wheel / tyres	Alloy rim - front right side - Scratched - Loss in value
4	Bonnet	Bonnet - Stone chips - Paint
5	Rear bumper	Rear bumper - Scratch(es) - Paint
6	Front bumper	Front bumper - Stone chips - Paint

## Wear and tear

No.	Component group	Description
1	Body	Body - Stone chips - No deduction
2	Body	Body - Scratch(es) - No deduction
3	Vehicle glazing	Windscreen - Stone chips - No deduction
4	Wheel / tyres	Alloy rim - rear right side - Scratched - No deduction

The vehicle shows signs of wear commensurate with its age and use.



## Previous damages

No.	Previous damage	Extent of damage (Net)
1	Front, Provided by user / customer, from 24 Jun 2021	1.264,17 €

## Order/Scope of order

The order was placed to prepare a sales report for the vehicle described. This includes the following:

- Description of core relevant information about the vehicle
- Documentation of equipment features  
(*Delivery by third-party service providers*)
- Documentation of damage, defects, missing parts
- Documentation of previous damage, unrepaired previous damage, repainting
- a brief visual or functional inspection of the equipment details if possible.  
(*Functional tests of driver assistance systems are not included in the scope of services!*)
- a photo documentation of the vehicle

## Basis for the order

This product is based on the Alphabet Fuhrpark GmbH guidelines for vehicle returns and valuations. The expert makes the explicit findings in each individual case objectively within the framework of the specified standards based on his or her own expertise.

The vehicle inspection takes place in a disassembled state.

Damage or defects that can only be detected during disassembly/diagnosis work or through advanced knowledge remain within the scope of the prognosis risk. An extended risk exists for concealed defects caused by fraudulent deception and not identifiable by the expert.

Damage or defects resulting from normal use or wear and tear of the vehicle will be accepted according to the applicable standard.

There was no explicit identification or monetary consideration of the expected features within the product.

Features which in their nature and severity slightly exceed normal use but do not constitute unacceptable damage will be documented and identified under signs of use if necessary.

Damage or defects which, according to the underlying standard, can no longer be attributed to normal use or wear and tear are listed in the product under "Depreciating Factors".

Depending on the product specification, a monetary ID can be provided. If this takes place, the costs can be 100% d or pro rata depending on the vehicle's age and mileage.

## Previous damages

According to available information previous damages were repaired at the vehicle. Traces of repairs, which allow conclusions about the area of repair, were not recognizable during the inspection.





Figure 1: Diagonal front (left)



Figure 2: Diagonal front (right)



Figure 3: Diagonal rear (left)



Figure 4: Diagonal rear (right)



Figure 5: Interior - front



Figure 6: Interior - rear





Figure 7: Instrument cluster



Figure 8: Instrument panel



Figure 9: interior 360° view



Figure 10: Cargo area

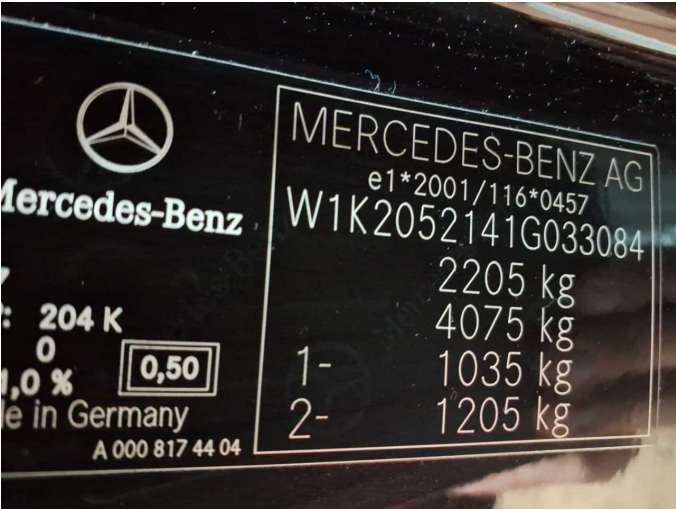


Figure 11: VIN



Figure 12: Mounted tyres





Figure 13: Documents



Figure 14: Documents



Figure 15: Additional tyres

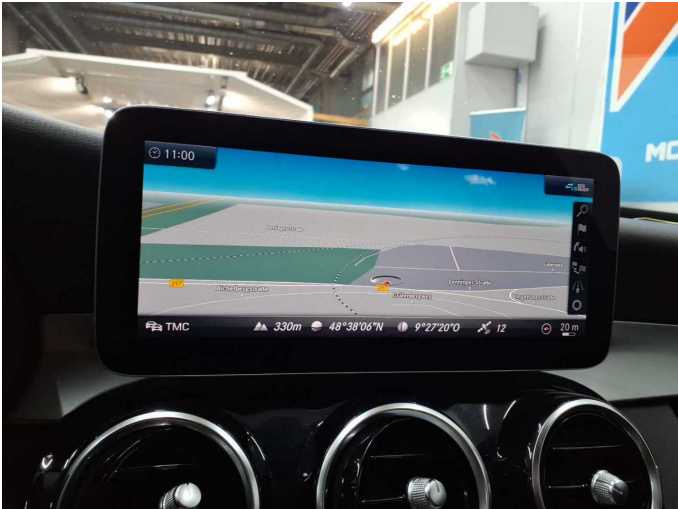


Figure 16: Navigation



Figure 17: Misc.



Figure 18: Misc.





Figure 19: Misc.



Figure 20: Misc.



Figure 21: Misc.



Figure 22: Misc.



Figure 23: Misc.



Figure 24: Misc.





Figure 25: Misc.



Figure 26: Misc.



Figure 27: Misc.



Figure 28: Misc.



Figure 29: Misc.



Figure 30: Misc.





Figure 31: Misc.



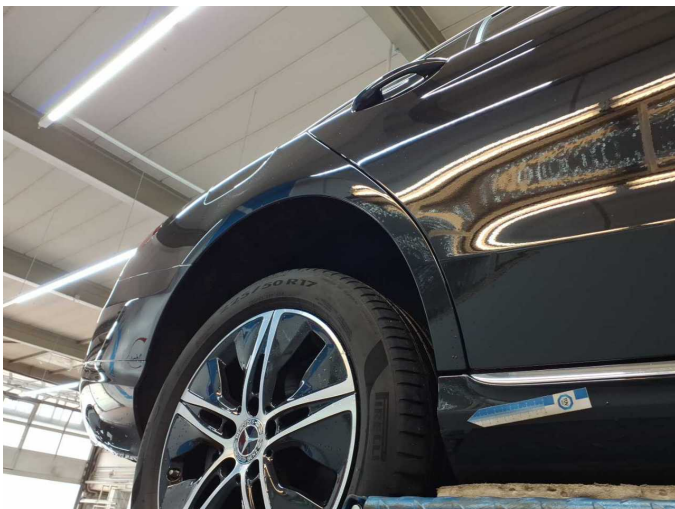
Figure 32: Misc.



Figure 33: Misc.



Damage 1: Equipment: Tirefit filler (Ausgelaufen) - Damaged - Replace



Damage 2: Sill - right side: Sill - Scratched - Smart repair



Damage 2: Sill - right side: Sill - Scratched - Smart repair





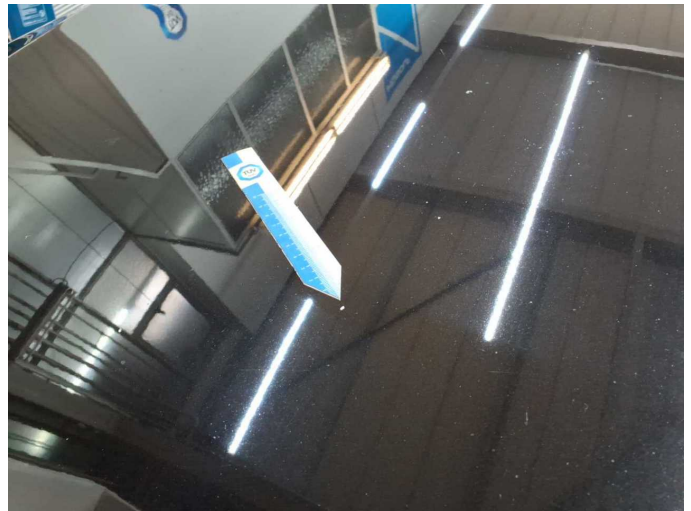
**Damage 3:** Wheel / tyres: Alloy rim - front right side - Scratched - Loss in value



**Damage 3:** Wheel / tyres: Alloy rim - front right side - Scratched - Loss in value



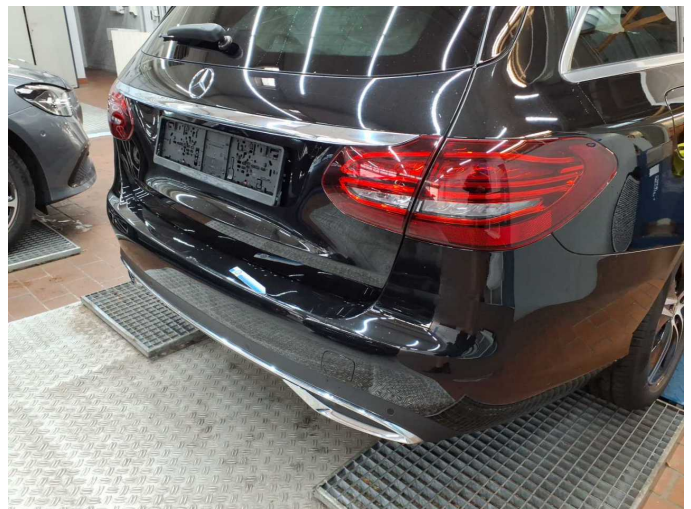
**Damage 4:** Bonnet: Bonnet - Stone chips - Paint



**Damage 4:** Bonnet: Bonnet - Stone chips - Paint



**Damage 4:** Bonnet: Bonnet - Stone chips - Paint



**Damage 5:** Rear bumper: Rear bumper - Scratch(es) - Paint





**Damage 5:** Rear bumper: Rear bumper - Scratch(es) - Paint



**Damage 5:** Rear bumper: Rear bumper - Scratch(es) - Paint



**Damage 5:** Rear bumper: Rear bumper - Scratch(es) - Paint



**Damage 5:** Rear bumper: Rear bumper - Scratch(es) - Paint



**Damage 6:** Front bumper: Front bumper - Stone chips - Paint

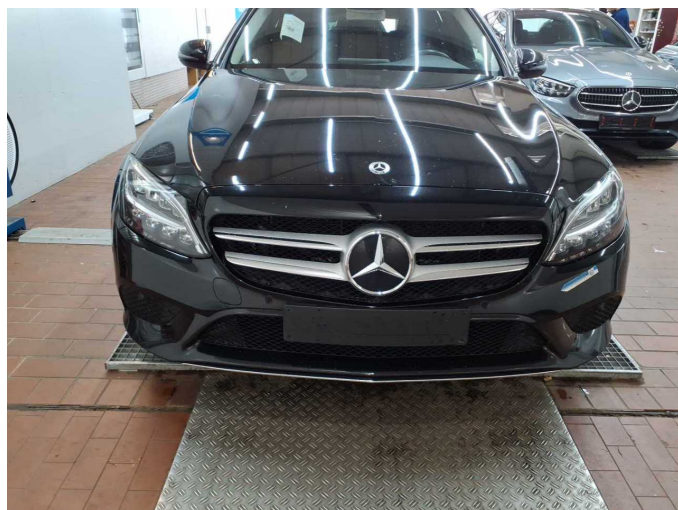


**Damage 6:** Front bumper: Front bumper - Stone chips - Paint





**Damage 6:** Front bumper: Front bumper - Stone chips - Paint



**Damage 6:** Front bumper: Front bumper - Stone chips - Paint



# Wartungshistorie

(gemäß Auftraggeber Informationen)

Fahrgestellnummer: W1K2052141G033084

Hersteller / Modell: MERCEDES-BENZ MB C 220 d T 9G-TRONIC

Datum	KM-Stand	Beschreibung
19.12.2024	137.991	Regelwartungsdienst
12.02.2024	112.376	Bremsscheiben hinten; Regelwartungsdienst
08.09.2023	99.184	HU + AU
10.02.2023	81.502	Bremsscheiben vorne; Regelwartungsdienst
13.05.2022	53.365	Bremsscheiben hinten; Regelwartungsdienst
21.03.2022	45.923	Regelwartungsdienst
09.08.2021	22.694	Kleine Inspektion