



Expertise

Protocol number: 41687182  
Order No. / Reference: 25226650  
Inspection date: 24 Sept 2025

Manufacturer: Mercedes-Benz

Model: C 300 de T 9G-TRONIC AMG Line

VIN: W1K2052131G074297



Vehicle details	
Manufacturer / Type / Model / Equipment	
Mercedes-Benz C 300 de T 9G-TRONIC AMG Line	
Vehicle Identification number	W1K2052131G074297
Mileage (Read)	88,845 km
First registration	23 Dec 2020
Number of holders	1
Power / Engine displacement	143 kw / 1,950 ccm
Fuel type / Cylinder	Hybr.D/E ext. edition / 4
Gearbox / Number of gears	Automatic / 9
Type of drive	Rear drive
Type of vehicle	Station wagon
Colour / colour code	SELENITGRAU - METALLIKLACK
Doors / Seats	5 / 5
Upholstery type	Leather
Colour of upholstery	Black-Anthracite
Vehicle with smoke odor	no



## Vehicle details

<b>Maintenance booklet / proof</b>	digital proof / complete	<b>Next maintenance in</b>	196 Tag(e)
<b>Last maintenance on / at</b>	04/2025 at 79,344 km		
<b>Key is / should be</b>	2 / 2	<b>FZG documents</b>	ZB#2 (B) was available (copy), ZB#1 (S) was not available
		<b>Letter No.</b>	GA318666
<b>Previous damage / Accident</b>	None detectable	<b>Repainting</b>	None detectable
<b>Inspection conditions</b>	sufficient	<b>Lifting equipment / pit</b>	yes
<b>Test drive</b>	short drive on the company premises	<b>Engine function test</b>	Performed
<b>Manufacturer key number/ type code number</b>	2222 / ALF 00043		
<b>Emission standard</b>	EURO6;WLTP;AP;PI/CI; M, N1 I	<b>Fine dust sticker</b>	
<b>Permitted total weight</b>	2,480 kg	<b>Empty weight</b>	

## Tyres

### Mounted tyres

#	Tyre size	Type of tyre	Manufacturer	Tread depth
1)	225/45 R18 95Y	Summer tyres on Light alloy	Pirelli	5mm / 5mm
2)	245/40 R18 95Y	Summer tyres on Light alloy	Pirelli	4mm / 4mm

### Additional tyres

#	Tyre size	Type of tyre	Manufacturer	Tread depth
1)	225/45 R18 95V	Winter tyres on Light alloy	Continental	6mm / 6mm
2)	225/45 R18 95V	Winter tyres on Light alloy	Continental	7mm / 7mm

**Legend:** Tread depth information for tires on the left is in the first place, for tires on the right is in the second place on the axle in the direction of travel

## Equipment

### Standard equipment

- Storage compartment under loading floor
- Airbag (driver airbag - passenger airbag - sidebags for driver and passenger (combined thorax/pelvis bag) - windowbags left/right - kneebag for driver)
- Anti-lock braking system (ABS)
- Armrest for driver and passenger foldable with compartment
- Left and right exterior mirrors, heated, electrically adjustable, painted in body color (with aspherically curved mirror glass and integrated indicator light)
- Brake Assist, Active (Collision warning including Adaptive Brake Assist and autonomous partial braking to mitigate or prevent collisions)
- DYNAMIC SELECT (consisting of 5 driving programs)
- Electronic Stability Program (ESP) with Crosswind Assist (with Curve Dynamics Assist)
- Pedestrian protection (active bonnet) (If a pedestrian collides head-on with the vehicle, the rear of the bonnet is raised. The increased distance to the components in the engine compartment creates additional deformation space to reduce the risk of injury to pedestrians in certain accident situations.)
- Halogen headlights with integrated LED daytime running lights (manual headlight range adjustment)
- Interior headliner fabric black
- KEYLESS-GO start function (including convenient opening and closing). This system allows the vehicle to be started simply by carrying the electronic key, which stores the access and drive authorization functions. To do this, the driver presses the start/stop button in the ignition lock once while holding down the brake pedal. In the Cabriolet, the convertible top can also be operated from the outside using the vehicle key using the open/close buttons on the driver's side.
- 5-way headrests for driver and front passenger 4-way adjustable and 2-way in the rear
- Load compartment cover including EASY-PACK safety net
- Steering wheel: Supersport steering wheel - deep-embossed leather (multifunction sports steering wheel in black leather with a 3-spoke design, flattened at the bottom, deeply embossed in the center grip area, with steering wheel shift paddles and steering wheel trim in silver chrome)
- ADAPTIVE BRAKE with hill start assist, pre-filling and dry braking in wet conditions
- Airbag: Automatic passenger airbag deactivation (If the passenger seat is unoccupied or a child seat is detected, the passenger airbag is automatically deactivated.)
- Armrest in the rear with compartment and cup holder
- ATTENTION ASSIST (the attention assistant) (can detect typical signs of fatigue through driver behavior and warn the driver of increasing fatigue or inattention)
- Outside temperature display
- diesel particulate filter
- tachometer
- Third brake light in LED technology
- ECO start-stop function
- Driving light assistant
- 4-way electric window lifter (with comfort operation and anti-pinch protection)
- Floor mats in black with AMG lettering
- Luggage net on the left side of the trunk (with two hooks)
- Transmission: Automatic 9-speed, 9G-TRONIC (including DIRECT SELECT selector lever and DIRECT SELECT steering wheel shift paddles)
- Heated rear window with timer control
- Rear window wiper with interval control (and automatic activation when reversing)
- Mechanical child safety lock for the rear doors
- Climate: THERMATIC automatic climate control with 2 climate zones (temperature can be regulated separately for driver and front passenger - fine dust activated carbon filter for dust and odor reduction - air recirculation switch with comfort function - sun and dew point sensor - rear compartment ventilation nozzles)
- Instrument cluster with 2 tube-shaped round instruments (and 13.97 cm (5.5") multifunction display and frame in silver chrome (Lines))
- Charging cable for household socket, 5 m, smooth (This charging cable, also called a Mode 2 cable, allows you to charge your vehicle battery from a household socket with up to 2.3 kW (230 V, 1-phase, 10 A) and is compatible with type E/F CEE 7/7 sockets.)
- Steering column mechanically adjustable in height and length
- Mercedes-Benz Emergency Call System (In the event of an accident, the Mercedes-Benz Emergency Call System can significantly shorten the time it takes for emergency services to arrive at the scene. Data is transmitted via a communications module with its own SIM card. No mobile phone is required.)



- Package: AMG Line Exterior (AMG Styling: AMG front apron, rear apron, side skirts, diamond grille with chrome pins, integrated Mercedes star 18" AMG LMR in 5-spoke design, front 225/45 R18 on 7.5Jx18 ET44, rear 245/40 R18 on 8.5Jx18 ET49, aerodynamically optimized, tremolite gray paint with high-sheen finish, AGILITY CONTROL suspension with selective damping system, exhaust system with 2 visible tailpipe trims integrated into the bumper, perforated brake calipers from the front with Mercedes-Benz lettering, brake system with large brake calipers)
- Radio accessories: Digital radio (for DAB, DMB and DAB+ standards)
- Radio accessory: Communication module (LTE) for using Mercedes me connect services (The communication module (LTE) offers you a clear advantage in terms of convenience and safety. It constantly connects the vehicle to the internet, allowing you to use helpful services such as Live Traffic Information from Mercedes me connect. Two mobile antennas and an LTE-capable SIM card ensure a fast connection.)
- Windscreen wipers with rain sensor
- C-Class seat belts (3-point seat belts including mechanical belt height adjustment for driver and front passenger and automatic belt height adjustment in the rear outside, as well as belt tensioners with belt force limiters for driver and front passenger)
- Sports pedal system made of brushed stainless steel with black rubber studs
- Pre-installation for vehicle monitoring (Vehicle monitoring connects you to your car and ensures you have a permanent information advantage. This way, you know where your vehicle is at all times and can even determine which area it is allowed to stay in. You will also be immediately informed of any unwanted movements.)
- High-visibility vest for drivers
- Green heat-insulating glass all around including rear window made of toughened safety glass
- Decorative elements in black piano lacquer look / light aluminium with longitudinal grain

#### Extra equipment

- Ambient lighting
- Paint finish: metallic
- Charging cable for wallboxes and public charging stations, 8 m, smooth (This charging cable, also called a Mode 3 cable, allows you to charge your vehicle battery at a wallbox or public charging station with up to 11 kW (Type 2, 3-phase, 16 A))

- Package: Interior lighting package (front footwell lights - light in the center console storage compartment - rear reading lights in the grab handles with LED technology - handle recess lighting in the doors - cosmetic mirror lighting in the roof unit)
- Upholstery: ARTICO man-made leather/DINAMICA microfiber
- Radio: Audio 20 GPS (High-resolution media display with 17.8 cm (7") screen diagonal - Radio - Bluetooth connection for up to two smartphones in parallel - Controller as central control system - Two USB ports under the armrest - Sound system with four midrange speakers in the doors and a front bass - MP3 - Hands-free system)
- Tire pressure monitoring (TPMS)
- Travel calculator in the multifunction display (with current consumption display)
- Service interval display ASSYST
- Seats: Rear seat backrests foldable 40/20/40 split
- Seats: ISOFIX child seat attachment with Top Tether in the rear
- Seats: Front seats electrically adjustable (electric adjustment for seat height and backrest angle - mechanical for longitudinal adjustment and headrests)
- Cruise control with HOLD function (with variable speed limiter SPEEDTRONIC)
- Vehicle Setup Pre-installation (Full control, anytime, anywhere: With the Vehicle Setup app on your smartphone, you can remotely change settings and access information. For example, you can adjust the interior temperature, send addresses to your navigation system, or lock the doors.)
- Electronic immobilizer
- Central locking (with interior switch, automatic locking (can be deactivated) and crash sensor with emergency opening)

- Instrument panel and door edges in ARTICO black man-made leather
- Package: Storage (Luggage net on the side of the trunk on the right side panel, net on the trunk floor, folding box under the loading floor, double cup holder in the center console for 2 x 500 ml (with 6-speed manual transmission), double cup holder in the center console for 2 x 750 ml (with automatic transmission), luggage net in the passenger footwell, map pockets on the back of the front seats, 2 USB ports with charging function)



- Package: Advanced Assistance Package (Mirror Package: - Interior and exterior mirrors on the driver's side with automatic dimming - Exterior mirrors left and right with electrical folding - Parking position on the right and ambient lighting in the exterior mirrors - Curbside adjustment - Automatic lowering of the passenger mirror glass to "curbside adjustment" when reverse gear is engaged Lane Package: - Active Lane Keeping Assist and Blind Spot Assist - Active Distance Assist DISTRONIC including Active Brake Assist)
- Package: Business PLUS (Parking Package - Active Parking Assistant - Advanced Infotainment Package - Smartphone Integration Package - Apple CarPlay, Android Auto, Media Display with 10" high-resolution media display, 25" diagonal, SD card navigation, Live Traffic Pre-installation - Comfort Package - Heated seats for driver/passenger, Seat Comfort Package for driver/passenger: - Electric 4-way lumbar support - Electric seat cushion tilt and mechanical seat cushion depth adjustment by 6 cm - Fuel tank with larger capacity (not for 300e/de) - Lighting Package - LED high-performance headlights, LED daytime running lights)
- Package: Comfort Package
- Package: Light
- Package: Night for AMG Line Exterior (diamond grille with silver pins and high-gloss black louvres. 18" AMG LMR in 5-spoke design, front axle 225/45 R18 on 7.5Jx18 ET44, rear axle 245/40 R18 on 8.5Jx18 ET49, aerodynamically optimized, high-gloss black paint and high-shine finish. AMG front apron with decorative trim in high-gloss black. Rear bumper with decorative trim in high-gloss black. Side skirts with decorative strip in black. Beltline trim strip and window surround in high-gloss black. Exterior mirrors in high-gloss black. Heat-insulating dark-tinted glass from the B-pillar. Roof rails in black.)
- Package: Advanced Parking Package (12 sensors - Active Parking Assist: Detects parking spaces up to 35 km/h, controls the steering, in conjunction with automatic assists with accelerating, braking, and gear changes - PARKTRONIC: Visual/acoustic warning of detected obstacles in front of/behind the vehicle up to approx. 10 km/h - Rear Cross Traffic Alert provides visual and acoustic warnings when cross traffic is detected - Drive Away Assist (only in conjunction with automatic transmission) - Button on the center console or on the control panel for the assistance systems - Rear view camera)
- Package: High-End Infotainment Package (Smartphone Integration Package - Apple CarPlay, Android Auto, high-resolution 10.25" media display, COMAND Online, touchpad with controller and LINGUATRONIC voice control system, hard drive navigation with satellite map display, Bluetooth hands-free system, Remote Online, SD interface, 2 USB ports, WLAN/WIFI hotspot, live traffic, office functions in the vehicle, Microsoft Office 365 functionality, concierge service, advanced navigation services including traffic sign assistance).
- Package: Sound Comfort (Burmester surround sound system: 13 speakers, 9-channel DSP amplifier, 590 watts system power - Heat- and noise-insulating acoustic glass: with acoustic film for the windshield and laminated safety glass with acoustic film in the front side windows. Acoustic film replaces the conventional plastic interlayer of the laminated safety glass. This reduces the noise level in the interior by up to 10 decibels. The acoustic film is specially tuned.)
- Decorative elements wood walnut brown open-pore

## Brief expert findings

Documents submitted	At the time of the inspection, the registration certificate Part 2 (letter) was available, but the registration certificate Part 1 (certificate) was not. (Copy)
VIN comparison	The vehicle identification number (VIN) was read from the vehicle and its conformity with the submitted documents was verified during the inspection by the undersigned.
Inspection	The inspection conditions were sufficient for the assessment of the vehicle. Lifting equipment and a pit were available for examining the vehicle.
Test drive	A short movement and shunting trip was carried out on the company premises.
Engine function test	An engine test run was performed.

## Value reducing factors

No.	Component group	Description
1	Mudguard - left side	Mudguard - left side (Vogelkot) - Soiled - Conditioning
2	Door - rear right side	Door - Scratch(es) - Smart repair
3	Side panel - rear left side	Sill - Scratch(es) - Smart repair
4	Side panel - rear right side	Side panel - Dent / paintcoat damage - Smart repair
5	Side panel - rear left side	Side panel - Dent / paintcoat damage - Smart repair
6	Headlight	Headlight - right side - Stone chips - Loss in value



No.	Component group	Description
7	Bonnet	Bonnet - Stone chips - Paint
8	Front bumper	Front bumper - Stone chips - Paint
9	Wheel / tyres	Alloy rim - rear left side - Scratched - Replace
10	Wheel / tyres	Alloy rim - rear right side - Scratched - Replace
11	Wheel / tyres	Alloy rim - front left side - Scratched - Replace

## Wear and tear

No.	Component group	Description
1	Wheel / tyres	Alloy rim - front right side - Scratch(es) - No deduction
2	Vehicle glazing	Windscreen - Stone chips - No deduction
3	Roof	Roof - Stone chips - No deduction
4	Body	Body (Zierleisten verfärbt durch Sonneneinstrahlung) - Soiled - No deduction

The vehicle shows signs of wear commensurate with its age and use.

## Order/Scope of order

The order was placed to prepare a sales report for the vehicle described. This includes the following:

- Description of core relevant information about the vehicle
- Documentation of equipment features  
(*Delivery by third-party service providers*)
- Documentation of damage, defects, missing parts
- Documentation of previous damage, unrepaired previous damage, repainting
- a brief visual or functional inspection of the equipment details if possible.  
(*Functional tests of driver assistance systems are not included in the scope of services!*)
- a photo documentation of the vehicle

## Basis for the order

This product is based on the Alphabet Fuhrpark GmbH guidelines for vehicle returns and valuations. The expert makes the explicit findings in each individual case objectively within the framework of the specified standards based on his or her own expertise.

The vehicle inspection takes place in a disassembled state.

Damage or defects that can only be detected during disassembly/diagnosis work or through advanced knowledge remain within the scope of the prognosis risk. An extended risk exists for concealed defects caused by fraudulent deception and not identifiable by the expert.

Damage or defects resulting from normal use or wear and tear of the vehicle will be accepted according to the applicable standard.

There was no explicit identification or monetary consideration of the expected features within the product.

Features which in their nature and severity slightly exceed normal use but do not constitute unacceptable damage will be documented and identified under signs of use if necessary.

Damage or defects which, according to the underlying standard, can no longer be attributed to normal use or wear and tear are listed in the product under "Depreciating Factors".

Depending on the product specification, a monetary ID can be provided. If this takes place, the costs can be 100% d or pro rata depending on the vehicle's age and mileage.

## Previous damages

Apparently, no repaired previous damage could be found on the vehicle.



## Comments

- Winterradsatz ist kein Bestandteil des Auslieferungsumfangs.





Figure 1: Diagonal front (left)



Figure 2: Diagonal front (right)



Figure 3: Diagonal rear (left)



Figure 4: Diagonal rear (right)



Figure 5: Interior - front



Figure 6: Interior - rear





Figure 7: Instrument cluster



Figure 8: Instrument panel



Figure 9: Interior 360° view



Figure 10: Cargo area



Figure 11: VIN



Figure 12: Mounted tyres





Figure 13: Documents



Figure 14: Documents

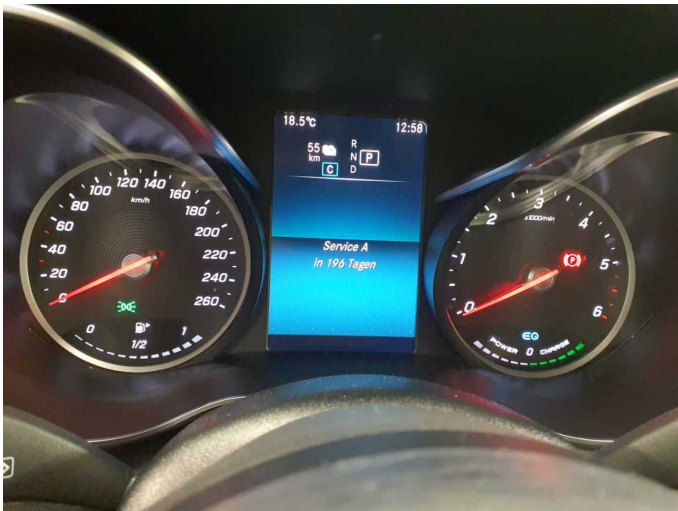


Figure 15: Documents



Figure 16: Additional tyres



Figure 17: Navigation

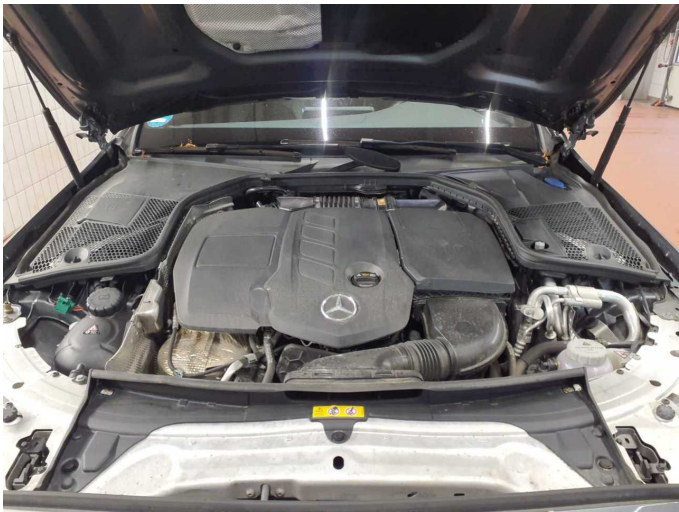


Figure 18: Misc.





Figure 19: Misc.



Figure 20: Misc.



Figure 21: Misc.



Figure 22: Misc.



Figure 23: Misc.



Figure 24: Misc.



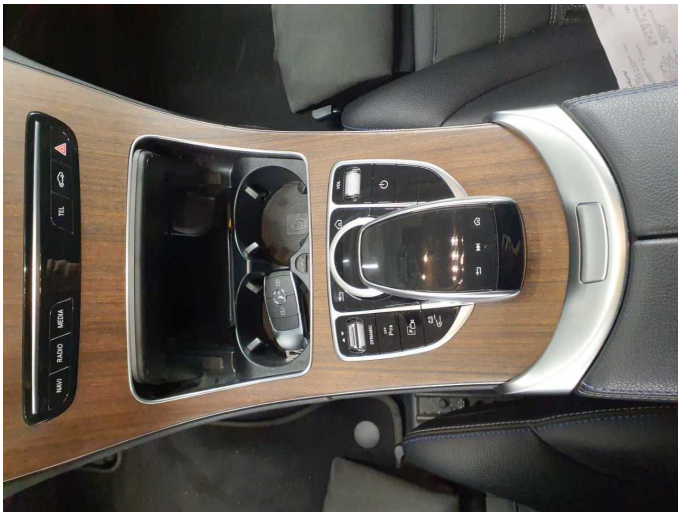


Figure 25: Misc.

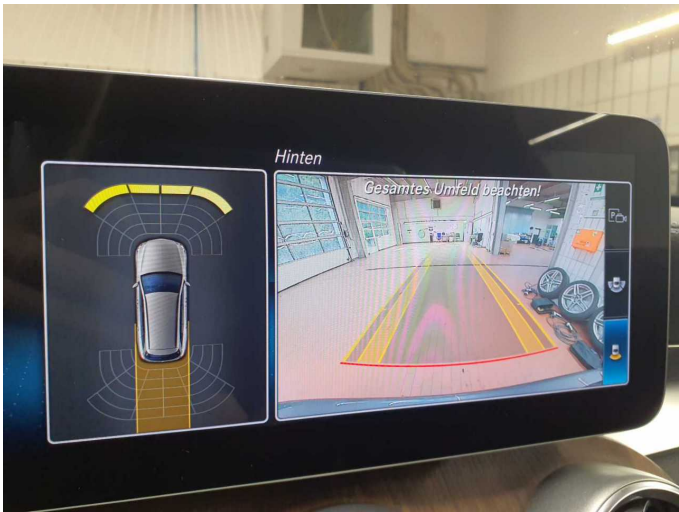


Figure 26: Misc.



Figure 27: Misc.



Figure 28: Misc.



Figure 29: Misc.



Damage 1: Mudguard - left side: Mudguard - left side (Vogelkot) - Soiled - Conditioning





**Damage 1:** Mudguard - left side: Mudguard - left side (Vogelkot) - Soiled - Conditioning



**Damage 2:** Door - rear right side: Door - Scratch(es) - Smart repair



**Damage 2:** Door - rear right side: Door - Scratch(es) - Smart repair



**Damage 3:** Side panel - rear left side: Sill - Scratch(es) - Smart repair



**Damage 3:** Side panel - rear left side: Sill - Scratch(es) - Smart repair

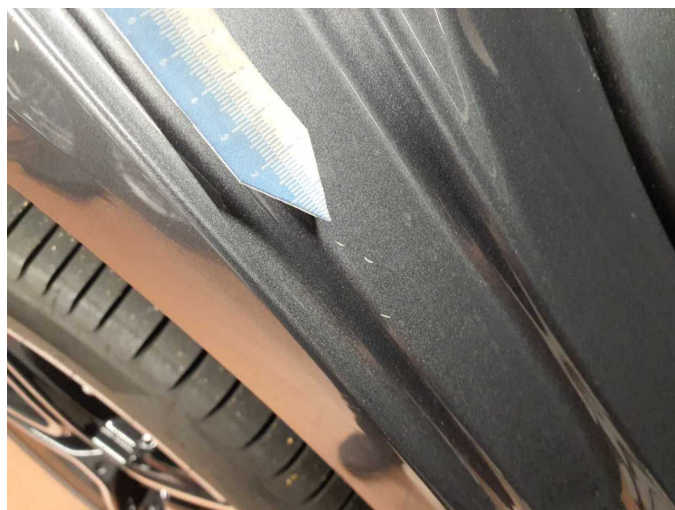


**Damage 4:** Side panel - rear right side: Side panel - Dent / paintcoat damage - Smart repair

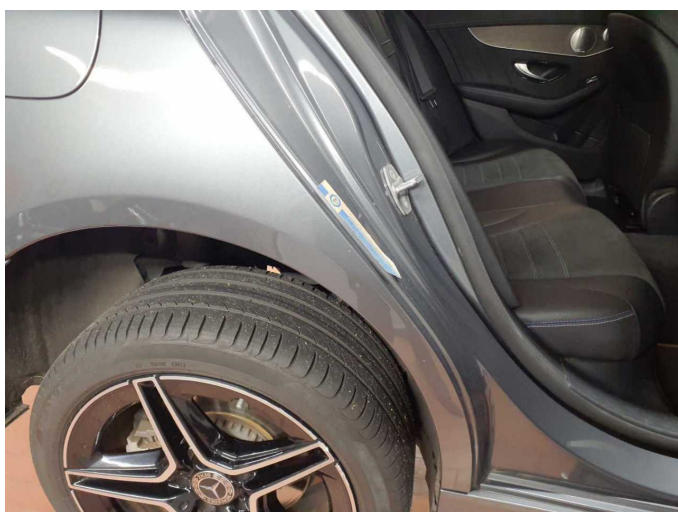




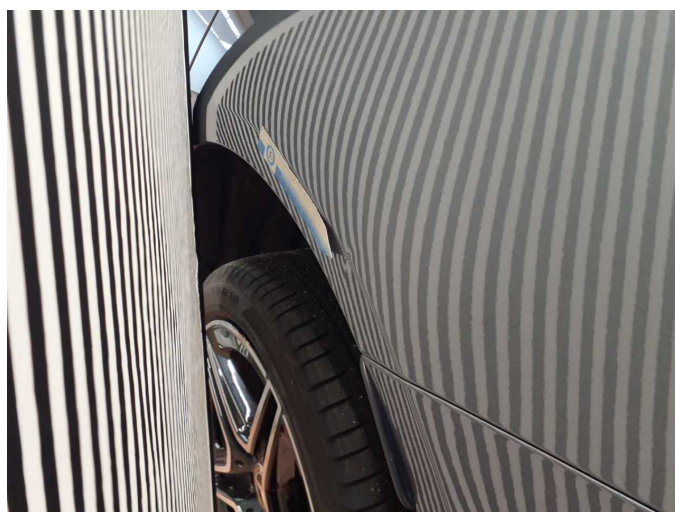
**Damage 4:** Side panel - rear right side: Side panel - Dent / paintcoat damage - Smart repair



**Damage 4:** Side panel - rear right side: Side panel - Dent / paintcoat damage - Smart repair



**Damage 4:** Side panel - rear right side: Side panel - Dent / paintcoat damage - Smart repair



**Damage 5:** Side panel - rear left side: Side panel - Dent / paintcoat damage - Smart repair

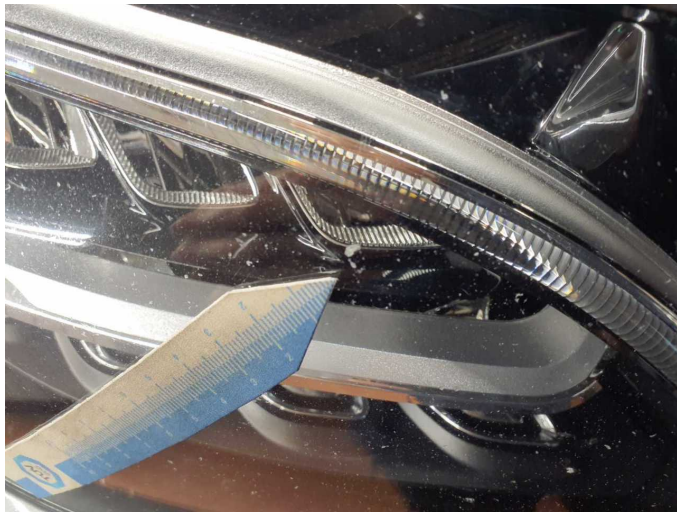


**Damage 5:** Side panel - rear left side: Side panel - Dent / paintcoat damage - Smart repair



**Damage 5:** Side panel - rear left side: Side panel - Dent / paintcoat damage - Smart repair





**Damage 6:** Headlight: Headlight - right side - Stone chips - Loss in value



**Damage 6:** Headlight: Headlight - right side - Stone chips - Loss in value



**Damage 7:** Bonnet: Bonnet - Stone chips - Paint



**Damage 7:** Bonnet: Bonnet - Stone chips - Paint



**Damage 7:** Bonnet: Bonnet - Stone chips - Paint



**Damage 7:** Bonnet: Bonnet - Stone chips - Paint





**Damage 7:** Bonnet: Bonnet - Stone chips - Paint



**Damage 7:** Bonnet: Bonnet - Stone chips - Paint



**Damage 8:** Front bumper: Front bumper - Stone chips - Paint



**Damage 8:** Front bumper: Front bumper - Stone chips - Paint



**Damage 9:** Wheel / tyres: Alloy rim - rear left side - Scratched - Replace



**Damage 9:** Wheel / tyres: Alloy rim - rear left side - Scratched - Replace

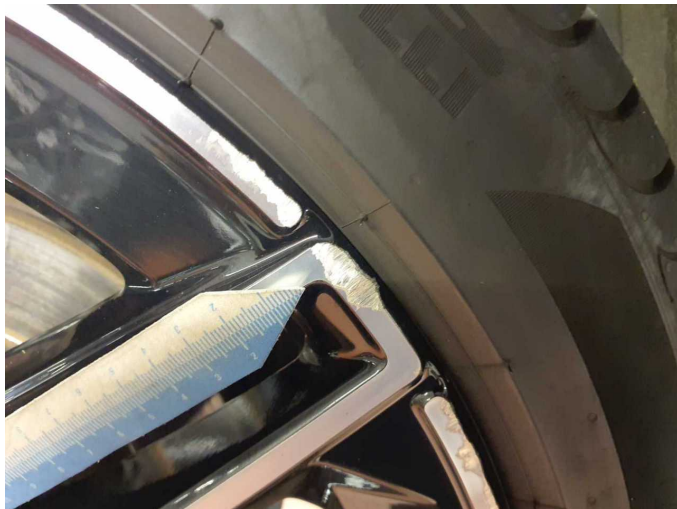




**Damage 9:** Wheel / tyres: Alloy rim - rear left side - Scratched - Replace



**Damage 9:** Wheel / tyres: Alloy rim - rear left side - Scratched - Replace



**Damage 10:** Wheel / tyres: Alloy rim - rear right side - Scratched - Replace



**Damage 10:** Wheel / tyres: Alloy rim - rear right side - Scratched - Replace



**Damage 11:** Wheel / tyres: Alloy rim - front left side - Scratched - Replace



**Damage 11:** Wheel / tyres: Alloy rim - front left side - Scratched - Replace



**Damage 11:** Wheel / tyres: Alloy rim - front left side - Scratched - Replace





# Wartungshistorie

(gemäß Auftraggeber Informationen)

Fahrgestellnummer: W1K2052131G074297

Hersteller / Modell: MERCEDES-BENZ MB C 300 de T 9G-TRONIC AMG Line

Datum	KM-Stand	Beschreibung
09.04.2025	79.344	Regelwartungsdienst
21.03.2024	62.153	Regelwartungsdienst
13.12.2023	56.352	AU
30.03.2023	42.440	Regelwartungsdienst
20.01.2022	17.482	Kleine Inspektion