



MERCEDES-BENZ A-Klasse

A 250 e 8G-DCT

VIN NO W1K1770861J358867

Registration Number 861J358867



MOT Date

2025-06-01

Last Service



Number of Owners

1

Last Service Mileage



Number of Keys

2

First Registration Date

2022-06-22

Odometer Reading

69838 km

Country First Registered

Germany

Inspection Report Summary

Customer	BCA Online	Report Number	P20250924090259
Inspection Date / Place	2025-09-24 / BCA Neuss	Cosmetic Grade	3

Vehicle Summary

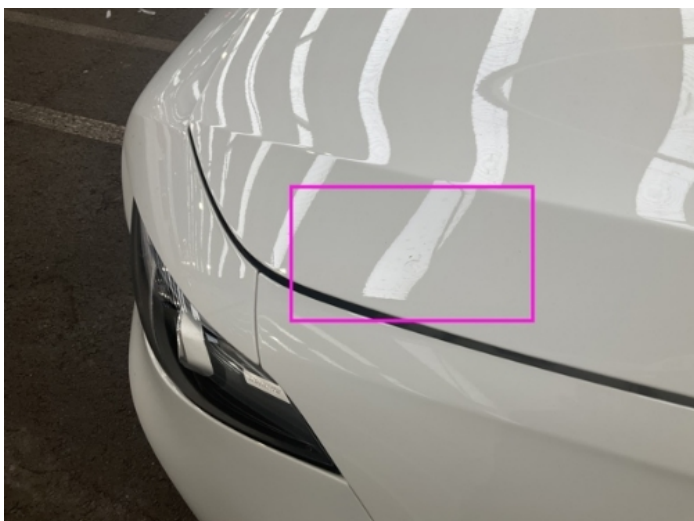
Vehicle Condition	Runner	VAT Type	Qualifying
Fuel Type	Plug - in Hybrid Electric Vehicle Petrol	Road Worthy	Yes
Colour	White	Engine Size (cc)	1332
Engine Size	1.3	No of Doors	5
Body Type	Sedan	Drive Train	Front
Seat Colour		No of Seats	5
Seat Covering Name	Schwarz	Seat Covering	Cloth/Leather
Charging Cables	Occasional Use Charge	WLTP CO2 Emissions	
Gearbox Type	Automatic		

Vehicle History & Documents

Service Book Available	Missing	Next Service Mileage	km
Previous Usage		Imported	No
Manufacturer Warranty			







Equipment

Tinted Glass	Alloys wheels	Anti-lock braking	Cruise control
Digital dashboard	Remote central locking	Sunroof	Lane assist
LED Headlamps	Rear parking sensors	Airbag Status	Ambient lighting
Bluetooth telephone interface	Digital Radio	Remote adjusting wing mirrors	Stability control
Emergency brake assist	Leather steering wheel	Radio	

Equipment Details

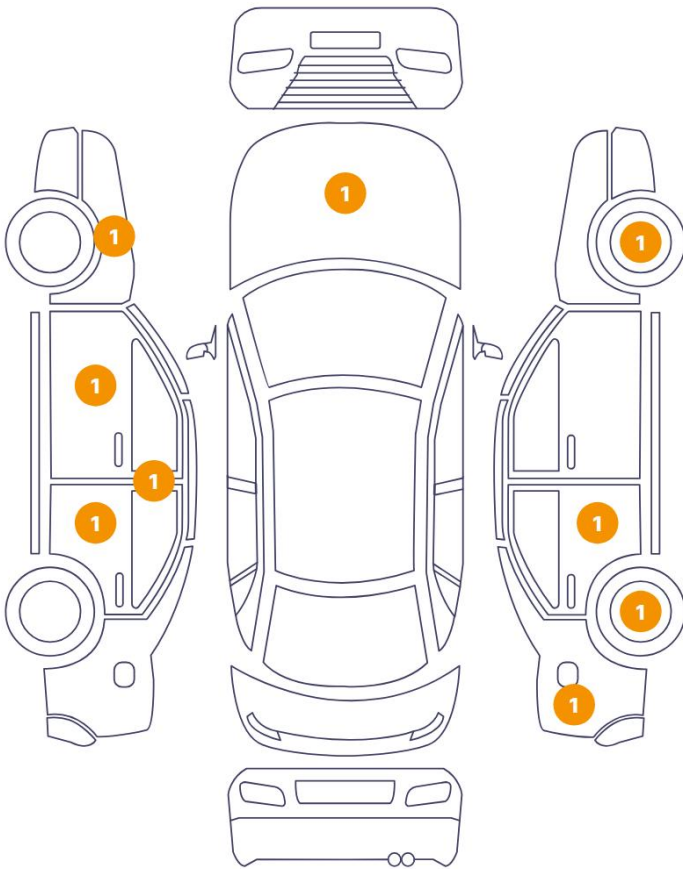
Air Conditioning	Climate Control	Alloy Wheel Size	18
Seat Heating	Front	Sunroof Type	Opening Panoramic

Wheels & Tyres

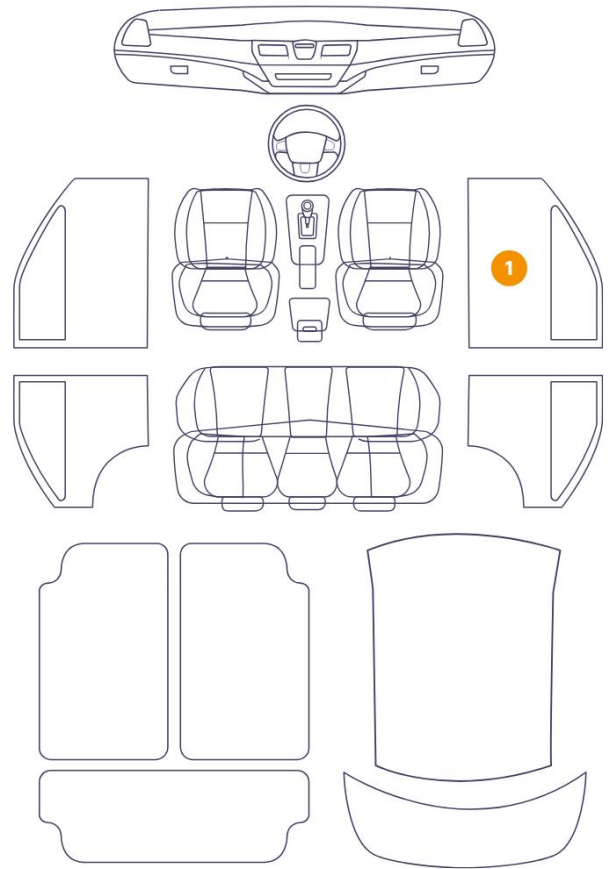
Left Rear Tyre Depth	5	Right Front Tyre Depth	5
Left Front Tyre Depth	5	Right Rear Tyre Depth	5

Cosmetic Damage

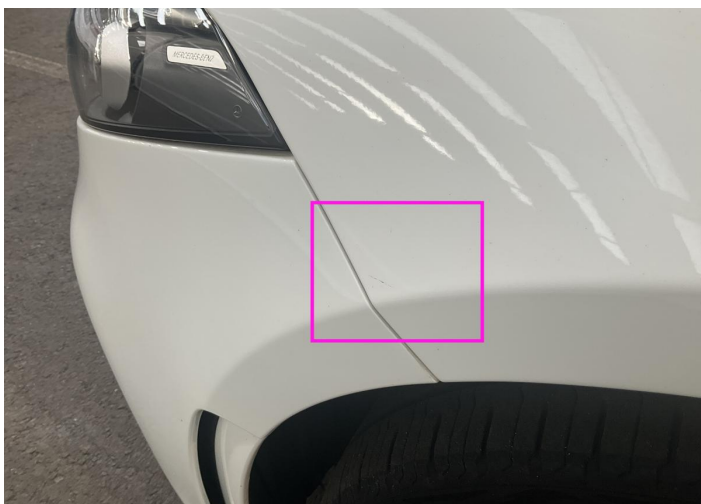
9 Schäden



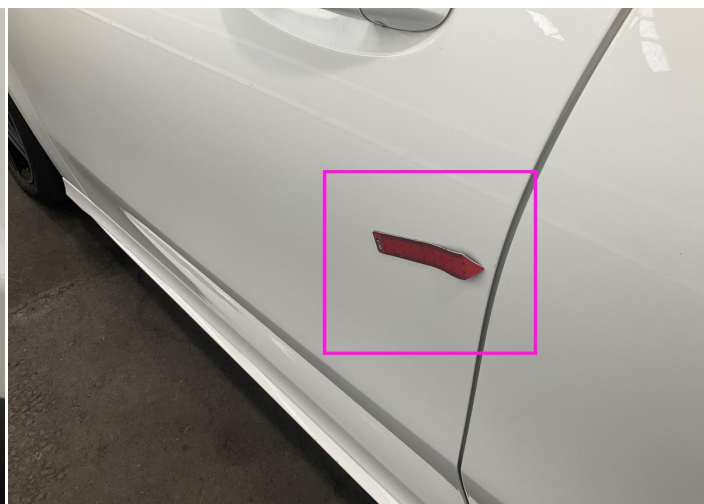
1 Schäden



Component	Damage	Comments
1 Wing Expander / Front Left	Paint / Scratch / Scuff	
2 Door / Front Left	Paint / Scratch / Scuff	
3 B Pillar / Center Left	Bodywork / Dent / Dent	
4 Door / Back Left	Paint / Scratch / Scuff	
5 Rim / Back Right	Out of Bodywork / Scratch	
6 Side Panel / Back Right	Paint / Stone Chip	
7 Door / Back Right	Paint / Stone Chip	
8 Panel Filling / Front Right	Interior / Scratched	
9 Rim / Front Right	Out of Bodywork / Scratch	
10 Hood	Bodywork / Dent / Dent	



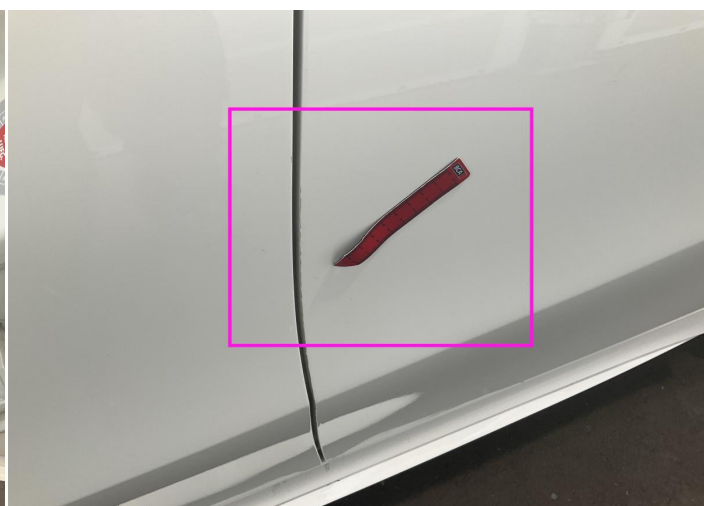
1. Wing Expander / Front Left
Paint / Scratch / Scuff -



2. Door / Front Left
Paint / Scratch / Scuff -



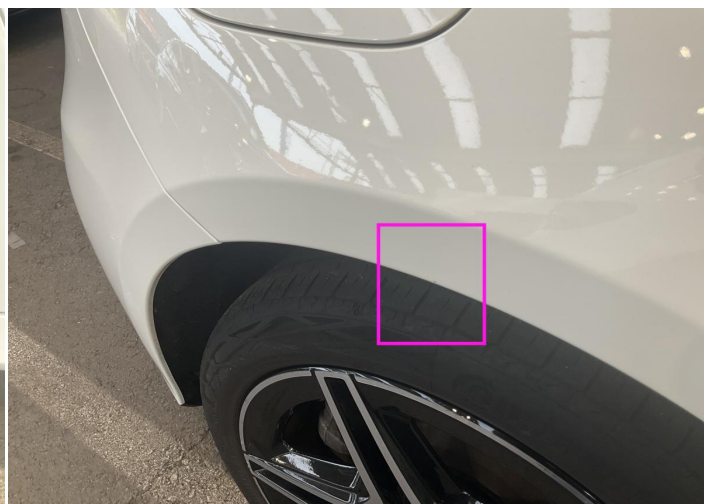
3. B Pillar / Center Left
Bodywork / Dent / Dent -



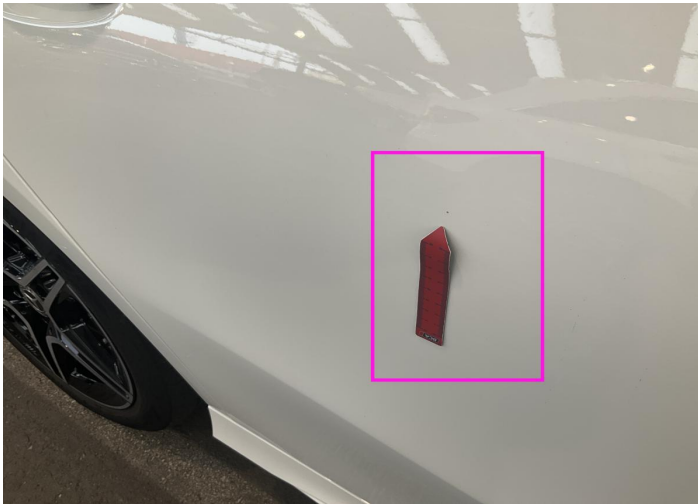
4. Door / Back Left
Paint / Scratch / Scuff -



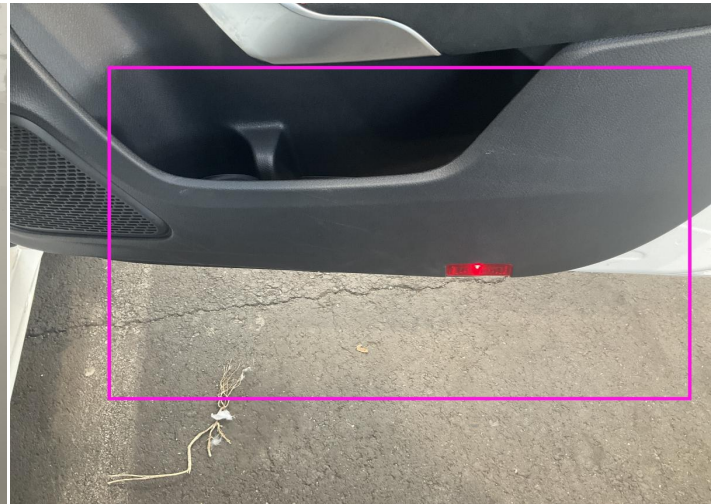
5. Rim / Back Right
Out of Bodywork / Scratch -



6. Side Panel / Back Right
Paint / Stone Chip -



7. Door / Back Right
Paint / Stone Chip -



8. Panel Filling / Front Right
Interior / Scratched -



9. Rim / Front Right
Out of Bodywork / Scratch -



10. Hood
Bodywork / Dent / Dent -

Mechanical Condition

Equipments Test

Central Locking	✓	Electric Windows	✓
Audio Equipment	✓	AC / Heating System	✓
Main & Spare Keys Functioning	✓	Parking Sensors / Cameras Functioning	✓
Other Equipments	✓		

Control Lights

ABS Warning Light	✓	ESP Fault/Traction Control Malfunction Light	✓
Airbag Warning Light	✓	Oil Pressure Warning Light	✓
Brake Warning Light	✓	Power Steering Warning Light	✓
Alternator / Battery	✓	No Dashboard Lights	✓
Display Defect	✓	Service Light	!

Engine

Engine Status / EML	✓	Engine Leak Visible	✓
Engine Starts	✓		

Gearbox

Gear Box	✓
----------	---

Levels

Brakes Fluid	✓	Coolant Fluid	✓
--------------	---	---------------	---

Hybrid/EV

Charge Lead Condition	✓	Charge Port Condition	✓
Hybrid System Fault	✓		

Test Drive Inspection

Steering Wheel

Steering | Noise / Anomaly ✓

Engine

Engine Noise ✓ The Gears Scratch / Skip / Abnormal Operation ✓

Fume Quantity ✓ Power Loss ✓

Brake

Brake System Anomaly ✓

General

Test Driven Status ✓

✓ *No troubles detected, good condition or correct tests, according to vehicle age and mileage*

! *Damages or malfunction detected that requires repairs by the buyer*

NA *Not applicable*

☐ *Not tested*

Disclaimer

Please also note the "UserGuide condition report", which shows the scope of the vehicle description.

[User Guide](#)