



Expertise

Protocol number: 39466550  
Order No. / Reference: 24621473  
Inspection date: 23 Apr 2025

Manufacturer: Mercedes-Benz

Model: A 250 e 8G-DCT Progressive

VIN: W1K1770861J243322



Vehicle details	
Manufacturer / Type / Model / Equipment	
Mercedes-Benz A 250 e 8G-DCT Progressive	
Vehicle Identification number	W1K1770861J243322
Mileage (Read)	61,577 km
First registration	29 Jun 2020
Number of holders	2
Next periodical technical inspection	06/2025
(Report not on hand)	
Power / Engine displacement	118 kw / 1,332 ccm
Fuel type / Cylinder	Hybr.B/E ext. edition / 4
Gearbox / Number of gears	Automatic / 8
Type of drive	Front drive
Type of vehicle	Saloon car
Colour / colour code	Mountaingrau Metallic
Doors / Seats	5 / 5
Upholstery type	Artificial leather
Colour of upholstery	Beige
Re/Import	no
driving readiness	Roadworthy



## Vehicle details

<b>Maintenance booklet / proof</b>	digital proof / complete	<b>Next maintenance in</b>	103 Tag(e)
<b>Last maintenance on / at</b>	07/2024 at 46,764 km		
<b>Key is / should be</b>	2 / 2	<b>FZG documents</b>	ZB#2 (B) was available (copy), ZB#1 (S) was not available
		<b>Letter No.</b>	FT811745
<b>Previous damage / Accident</b>	Detectable	<b>Repainting</b>	None detectable
<b>Inspection conditions</b>	Sufficient	<b>Lifting equipment / pit</b>	yes
<b>Test drive</b>	Not performed	<b>Engine function test</b>	Performed
<b>driving readiness</b>	Roadworthy		
<b>Manufacturer key number/ type code number</b>	2222 / AJP 00009		
<b>Emission standard</b>	EURO6;WLTP;AM;PI/CI; M, N1 I	<b>Fine dust sticker</b>	
<b>Permitted total weight</b>	2,155 kg	<b>Empty weight</b>	

## Tyres

### Mounted tyres

#	Tyre size	Type of tyre	Manufacturer	Tread depth
1)	205/55 R17 95V	Winter tyres on Light alloy	Sonstige	6mm / 6mm
2)	205/55 R17 95V	Winter tyres on Light alloy	Sonstige	5mm / 5mm

### Additional tyres

#	Tyre size	Type of tyre	Manufacturer	Tread depth
1)	205/55 R17 91W	Summer tyres on Light alloy	Michelin	5mm / 5mm
2)	205/55 R17 91W	Summer tyres on Light alloy	Michelin	5mm / 5mm

**Legend:** Tread depth information for tires on the left is in the first place, for tires on the right is in the second place on the axle in the direction of travel



## Equipment

### Standard equipment

- |  |  |
|--|--|
| <ul style="list-style-type: none"> <li>• ABS - Anti-lock braking system</li> <li>• Airbag: Automatic passenger airbag deactivation</li> <li>• Airbag: Kneebag for driver</li> <li>• Airbag: Windowbag for driver and front passenger</li> <li>• Traction control (ASR)</li> <li>• ATTENTION ASSIST (the attention assistant)</li> <li>• Brake assist, active</li> <li>• double cup holders in the front</li> <li>• DYNAMIC SELECT</li> <li>• door sills with "Mercedes-Benz" lettering</li> <li>• Driving light assistant</li> <li>• Vehicle key with decorative frame in chrome</li> <li>• luggage net on the driver and passenger backrest</li> <li>• Transmission: Automatic 8G-DCT</li> <li>• Rear window wiper</li> <li>• Heated rear window</li> <li>• KEYLESS-GO start function</li> <li>• THERMATIC automatic climate control</li> <li>• Rear headrests (3)</li> <li>• Front headrests height adjustable</li> <li>• Charging cable for household socket, 4m, spiralized</li> <li>• Steering wheel: Multifunction sports steering wheel in leather</li> <li>• Net in the passenger footwell</li> <li>• Package: Light and Vision Package</li> <li>• Upholstery: ARTICO imitation leather/FIéron fabric</li> <li>• Radio: MBUX multimedia system</li> <li>• Tire pressure monitoring</li> <li>• gear lever with additional chrome elements</li> <li>• Windscreen wipers with rain sensor</li> <li>• Power steering</li> <li>• Seats: Rear seat backrests foldable 40/20/40 split</li> <li>• Lane Keeping Assist, active</li> <li>• Cruise control</li> <li>• Pre-installation for vehicle setup</li> <li>• Electronic immobilizer</li> </ul> | <ul style="list-style-type: none"> <li>• Adaptive brake light flashing</li> <li>• Airbag: driver and front passenger</li> <li>• Airbag: Sidebag for driver and front passenger</li> <li>• acoustic environmental protection</li> <li>• Armrest in center console for driver and passenger, foldable</li> <li>• roof control unit "4 light stones"</li> <li>• Third brake light</li> <li>• ECO start-stop function</li> <li>• Electronic Stability Program (ESP)</li> <li>• Chassis: Comfort chassis</li> <li>• 4-way electric window lifter</li> <li>• speed limit assistant</li> <li>• Halogen headlights with integrated LED daytime running lights</li> <li>• Interior headliner fabric black</li> <li>• Mechanical child safety lock</li> <li>• Communication module (LTE) for the use of Mercedes me connect services</li> <li>• Radiator grille with diamond pins in black</li> <li>• Charging system: Alternating current charging system (AC charging) 3.7 kW</li> <li>• Mercedes-Benz emergency call system</li> <li>• Gasoline particulate filter</li> <li>• Package: Seat comfort</li> <li>• Radio accessories: USB interface in spontaneous storage &amp; 2 USB interfaces in rear center console</li> <li>• Wheels: 43.2 cm (17") alloy wheels 4-way in 10-spoke design</li> <li>• Crosswind Assist</li> <li>• seat belts A-Class</li> <li>• Seats: Comfort seats</li> <li>• Socket: 12 V connection</li> <li>• Pre-installation for vehicle monitoring</li> <li>• High-visibility vest for drivers</li> <li>• carbon-look trim elements</li> </ul> |
|--|--|

### Extra equipment

- |  |   |
|--|---|
| <ul style="list-style-type: none"> <li>• Paint finish: metallic</li> <li>• Charging cable for wallboxes and public charging stations, 4 m, spiralized (This charging cable, also called a Mode 3 cable, allows you to charge your vehicle battery at a wallbox or public charging station with up to 11 kW (Type 2, 3-phase, 20 A))</li> <li>• Package: Business (Active Parking Assistant with PARKTRONIC - heated seats for driver and front passenger - extended MBUX functions - hard drive navigation - preparation for Live Traffic Information - touchpad)</li> </ul> | <ul style="list-style-type: none"> <li>• Charging cable for household socket, 8m, smooth (This charging cable, also called Mode 2 cable, allows you to charge the vehicle battery at the household socket with up to 2.3 kW (230 V, 1-phase, 10 A) and fits sockets of type E/F CEE 7/7)</li> <li>• Steering wheel: Heated steering wheel (heated multifunction steering wheel in nappa leather with chrome trim)</li> <li>• Package: Navigation Basic (7" instrument cluster - 7" media display - Advanced MBUX functions - Hard drive navigation - Pre-installation for Live Traffic Information - Touchpad)</li> </ul> |
|--|---|



- Package: Parking Package (including Active Parking Assistant with PARKTRONIC rear view camera)
  - Upholstery: ARTICO man-made leather
  - Radio accessories: Media Interface Cable Kit (The direct line to your data: With the practical cable kit you can connect your devices with a USB port or Lightning port to your vehicle's multimedia system via a universal interface. This is located in the center console. Simply connect your smartphone or tablet via cable and access the desired content.)
  - Phone accessories: Smartphone integration (consisting of Apple CarPlay and Android Auto)
  - Decorative elements in dark carbon look
- Package: Public Charging (includes the Mercedes me Charge service and the Mode 3 charging cable)
  - Wheels: 43.2 cm (17") light alloy wheels 4-way in 5-double-spoke design (painted matt Himalayan grey with 205/55 R 17 on 6.5 J x 17 ET 44)
  - Seats: Folding passenger seat
  - Seats: Seat heating for driver and front passenger (The intensity can be selected in three levels. Intelligent and comfortable: The seat heating switches back automatically.)
  - Pre-installation for Mercedes me Charge (includes the Mercedes me Charge service and the Mode 3 charging cable)

Brief expert findings

Documents submitted	At the time of the inspection, the registration certificate part 2 (letter) was available, but the registration certificate part 1 (certificate) was not available. (Copy)
VIN comparison	The vehicle identification number (VIN) was read and the undersigned verified that it matched the documents submitted during the inspection.
Inspection	The inspection conditions were sufficient to assess the vehicle. The inspection was carried out using the lighting conditions provided by the photo system included in the report. Lifting equipment and a pit were available for examining the vehicle.
Test drive	No test drive/maneuvering was carried out during the inspection of the vehicle.
Engine function test	An engine test run was performed.
driving readiness	At the time of the inspection, the vehicle was capable of driving and moving under its own power.

Value reducing factors

No.	Component group	Description
1	Side panel - rear right side	Side panel - dent(s) - Smooth repair work
2	Boot lid / rear door	Boot lid - dent(s) - Smooth repair work
3	Bonnet	Bonnet - Stone chips - Paint

Previous damages

No.	Previous damage	Extent of damage (Net)
1	Front, Provided by user / customer, from 7 Jan 2025	612,45 €
2	Front, Provided by user / customer, from 12 Sept 2024	1.065,12 €

Order/Scope of order

The order was placed to prepare a sales report for the vehicle described. This includes the following:

- Description of core relevant information about the vehicle
- Documentation of equipment features  
(Delivery by third-party service providers)
- Documentation of damage, defects, missing parts
- Documentation of previous damage, unrepaired previous damage, repainting
- a brief visual or functional inspection of the equipment details if possible.  
(Functional tests of driver assistance systems are not included in the scope of services!)
- a photo documentation of the vehicle



## Basis for the order

This product is based on the Alphabet Fuhrpark GmbH guidelines for vehicle returns and valuations. The expert makes the explicit findings in each individual case objectively within the framework of the specified standards based on his or her own expertise.

The vehicle inspection takes place in a disassembled state.

Damage or defects that can only be detected during disassembly/diagnosis work or through advanced knowledge remain within the scope of the prognosis risk. An extended risk exists for concealed defects caused by fraudulent deception and not identifiable by the expert.

Damage or defects resulting from normal use or wear and tear of the vehicle will be accepted according to the applicable standard.

There was no explicit identification or monetary consideration of the expected features within the product.

Features which in their nature and severity slightly exceed normal use but do not constitute unacceptable damage will be documented and identified under signs of use if necessary.

Damage or defects which, according to the underlying standard, can no longer be attributed to normal use or wear and tear are listed in the product under "Depreciating Factors".

Depending on the product specification, a monetary ID can be provided. If this takes place, the costs can be 100% d or pro rata depending on the vehicle's age and mileage.

## Previous damages

According to available information previous damages were repaired at the vehicle. Traces of repairs, which allow conclusions about the area of repair, were not recognizable during the inspection.

## Comments

- Für den montierten Radsatz wurde kein Nachweis erbracht.

- Winterradsatz ist kein Bestandteil des Auslieferungsumfangs.



Figure 1: Diagonal front (left)



Figure 2: Diagonal front (right)



Figure 3: Diagonal rear (left)



Figure 4: Diagonal rear (right)



Figure 5: Interior - front



Figure 6: Interior - rear



Figure 7: Instrument cluster



Figure 8: Instrument panel



Figure 9: interior 360° view ([Online Link](#))



Figure 10: Cargo area



Figure 11: VIN



Figure 12: Mounted tyres



Figure 13: Documents



Figure 14: Additional tyres

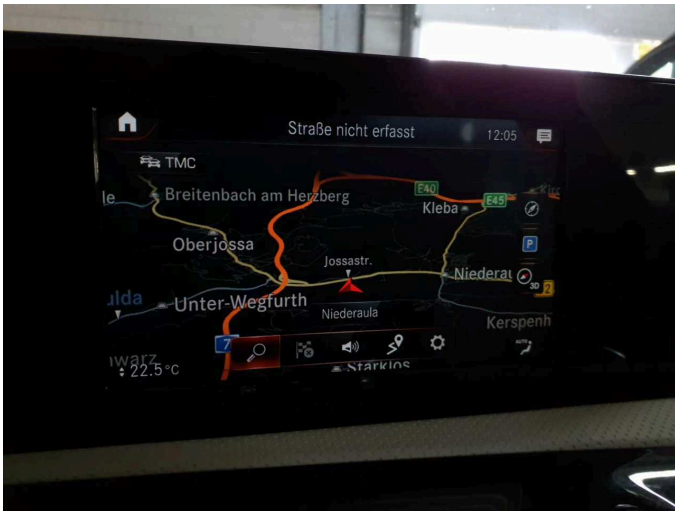


Figure 15: Navigation

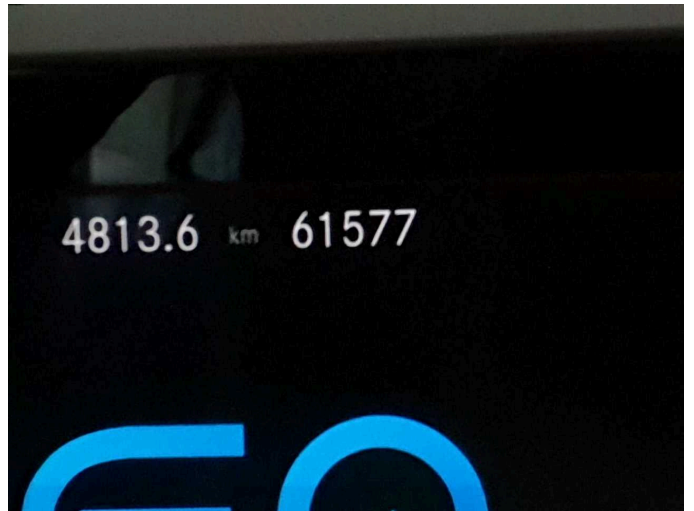


Figure 16: Misc.



Figure 17: Misc.



Figure 18: Misc.



Figure 19: Misc.

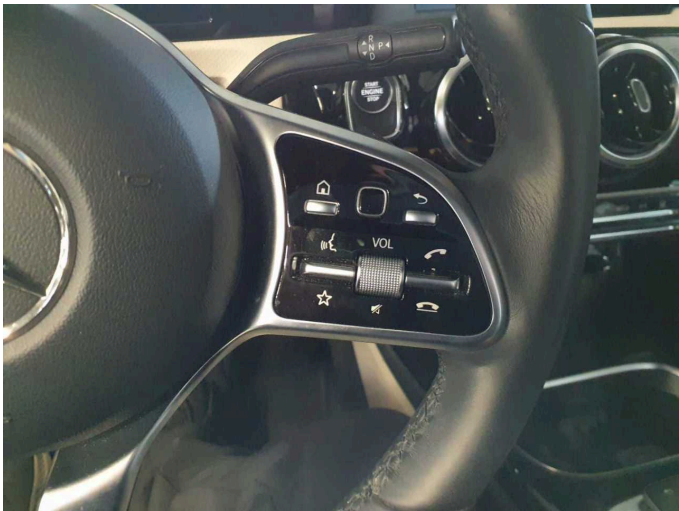


Figure 20: Misc.



Figure 21: Misc.



Figure 22: Misc.



Figure 23: Misc.



Figure 24: Misc.



Figure 25: Misc.



Figure 26: Misc.

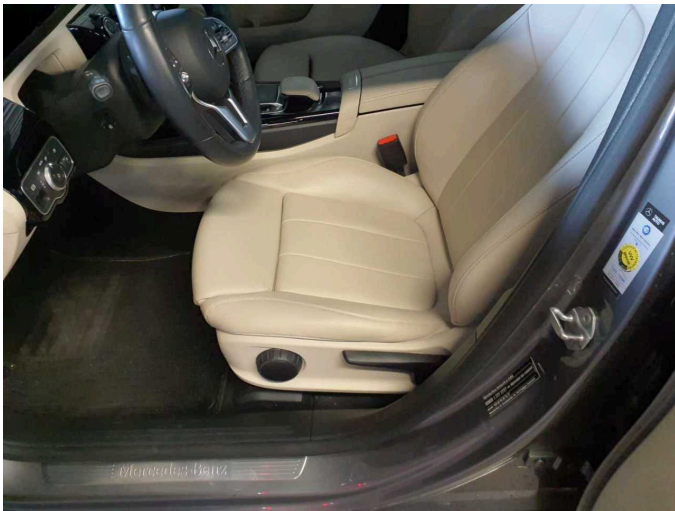


Figure 27: Misc.



Figure 28: Misc.

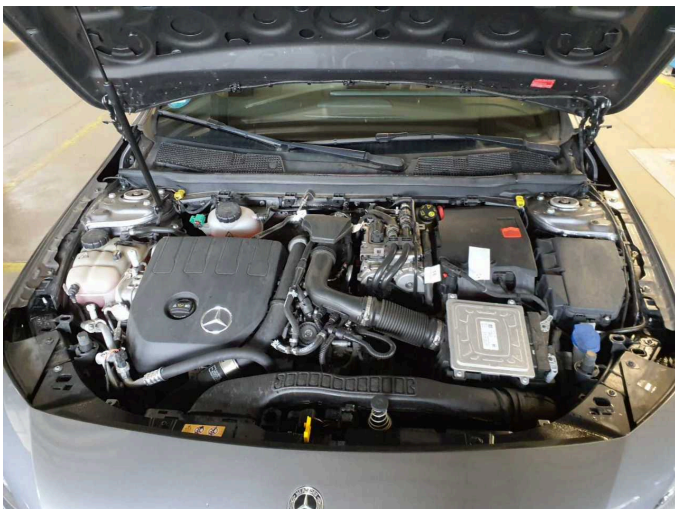


Figure 29: Misc.



Figure 30: Misc.



**Figure 31:** Misc.



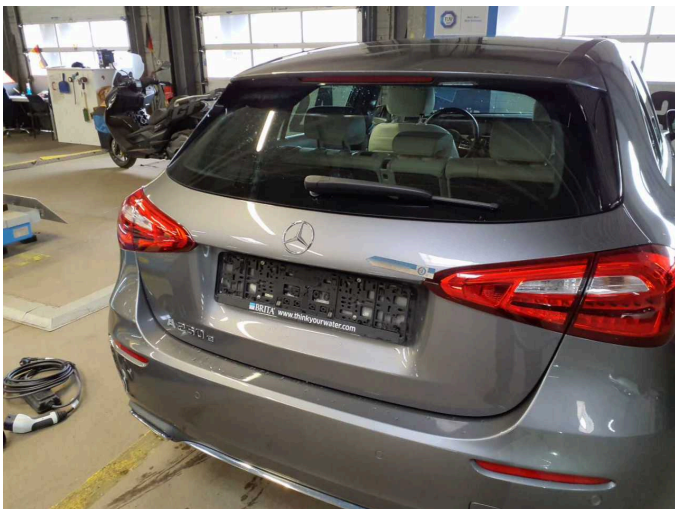
**Figure 32:** Misc.



**Damage 1:** Side panel - rear right side: Side panel - dent(s) - Smooth repair work



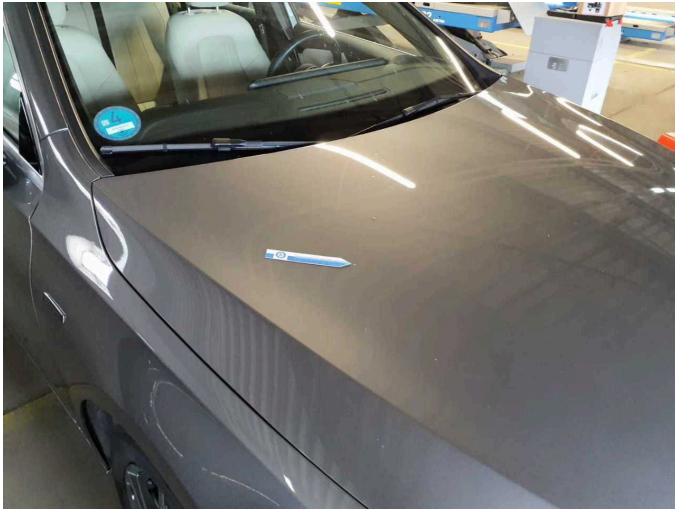
**Damage 1:** Side panel - rear right side: Side panel - dent(s) - Smooth repair work



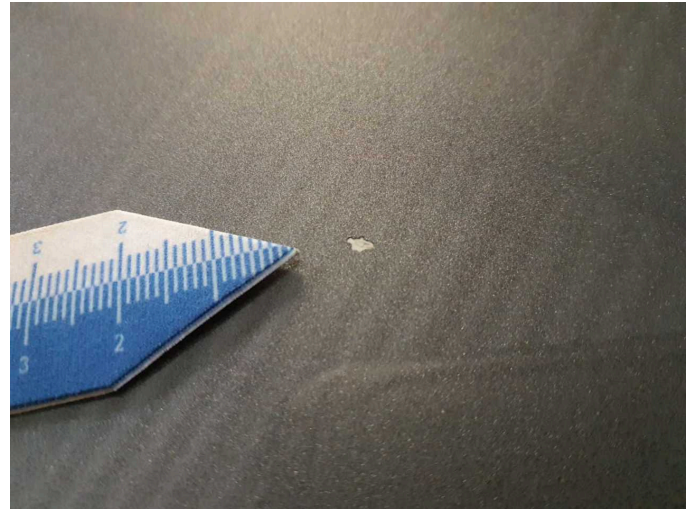
**Damage 2:** Boot lid / rear door: Boot lid - dent(s) - Smooth repair work



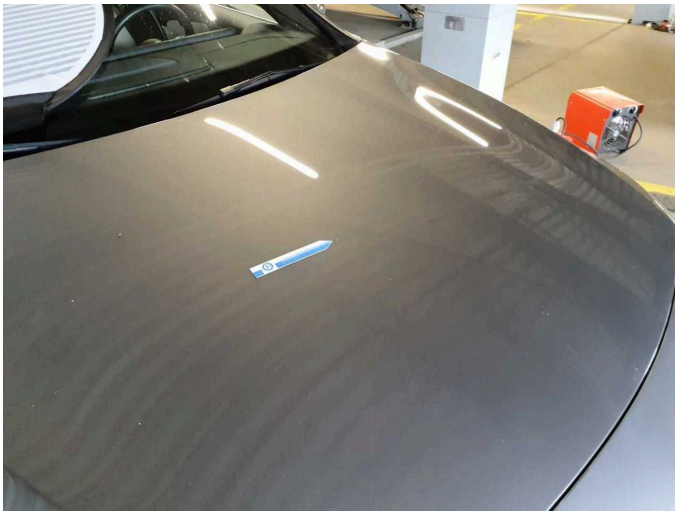
**Damage 2:** Boot lid / rear door: Boot lid - dent(s) - Smooth repair work



**Damage 3:** Bonnet: Bonnet - Stone chips - Paint



**Damage 3:** Bonnet: Bonnet - Stone chips - Paint



**Damage 3:** Bonnet: Bonnet - Stone chips - Paint



**Damage 3:** Bonnet: Bonnet - Stone chips - Paint