



Mercedes CLA-Klasse (KKL): 2BBG871

Vinnumber:	W1K1186861N252741	Versionname:	CLA250e Shooting Brake Business Sol. 1.3i
First Registrationdate:	17/09/2021	Fiscalpower:	218pk/cv 5p 8G-DCT
Expertise Mileage:	128501	Power Kw:	118
Bodytype:		Type of rims (mounted)	Aluminium
Gearbox:	Automatic		
Transmission:			
Fueltype:			
Maintenance	OK		
Battery functioning	Yes		
Type of rims (mounted)	Aluminium		
Certificate of Conformity	Yes		
Category	Passenger Car		
Registration Certificate Car (BE)	Yes		

Options

Number of keys total	2	Luggage cover	
GPS		Type of Tow bar	No Tow bar
Type of Maintenance book	Digital maintenance		
Type of GPS storage	HD		

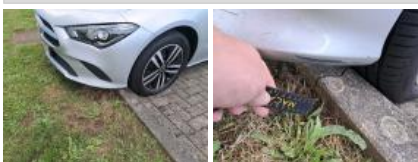
Tyres

205/55/17/91 W				
Summer tyres:	Fr.L.	Pirelli: 7 mm	Fr.R.	Pirelli: 7 mm
	Re.L.	Pirelli: 3 mm	Re.R.	Pirelli: 3 mm
Tyre profile depth FL				7.0
Tyre profile depth FR				7.0
Tyre profile depth RL				3.0
Tyre profile depth RR				3.0
Tyre size FL				205/55 R 17 91 W
Tyre size FR				205/55 R 17 91 W
Tyre size RL				205/55 R 17 91 W
Tyre size RR				205/55 R 17 91 W
Tyre type FL				Summer
Tyre type FR				Summer
Tyre type RL				Summer
Tyre type RR				Summer
Tyre make FL				264
Tyre make FR				264
Tyre make RL				264
Tyre make RR				264

Assistance equipment

Repair kit	Yes	Compressor	Yes
Number of charging cables (normal)	1		
Number of charging cables (rapid charge)	1		

Bumper F, Scratch(es), Spot repair



Bumper F, Scratch(es), Spot repair



Door RL, Scratch(es), Acceptable



Alloy rim FL polished, Scratch(es), Repair and paint (complete)



Alloy rim RL polished, Scratch(es), Acceptable



Door FL, Dent(s), Paintless dent repair



Central pillar L, Dent(s) and scratch(es), Spot repair



Bumper R, Scratch(es), Spot repair



Bumper R, Scratch(es), Spot repair

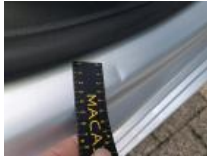


Tailgate / Boot, Bad repair, Check





Central pillar R, Dent(s), Paintless dent repair



Alloy rim RR polished, Scratch(es), Acceptable



Wing RR, Scratch(es), Repair and paint (complete)



Wing FR, Scratch(es), Repair and paint (complete)



Alloy rim FR polished, Scratch(es), Acceptable

