



Expertise

Protocol number: 41283194
Order No. / Reference: 24977206
Inspection date: 28 Aug 2025

Manufacturer: Mercedes-Benz

Model: CLA 220 d Shooting Brake 8G-DCT AMG Line

VIN: W1K1186141N141777



Vehicle details	
Manufacturer / Type / Model / Equipment	
Mercedes-Benz CLA 220 d Shooting Brake 8G-DCT AMG Line	
Vehicle Identification number	W1K1186141N141777
Mileage (Read)	93,497 km
First registration	10 Jul 2020
Number of holders	1
Next periodical technical inspection	10/2025
(Report on hand)	
Power / Engine displacement	140 kw / 1,950 ccm
Fuel type / Cylinder	Diesel / 4
Gearbox / Number of gears	Automatic / 8
Type of drive	Front drive
Type of vehicle	Coupe
Colour / colour code	Nachtschwarz
Doors / Seats	5 / 5
Upholstery type	Alcantara / Leather
Colour of upholstery	Black-Anthracite
Vehicle with smoke odor	no



Vehicle details

Maintenance booklet / proof	digital proof / complete	Next maintenance in	63 Tag(e)
Last maintenance on / at	10/2024 at 80,513 km		
Key is / should be	2 / 2	FZG documents	ZB#2 (B) was available (copy), ZB#1 (S) was not available
		Letter No.	FT809297
Previous damage / Accident	Detectable	Repainting	None detectable
Inspection conditions	sufficient	Lifting equipment / pit	yes
Test drive	Not performed	Engine function test	Performed
Manufacturer key number/ type code number	2222 / AGT 00005		
Emission standard	EURO6;WLTP;AM;PI/CI; M, N1 I	Fine dust sticker	
Permitted total weight	2,140 kg	Empty weight	

Tyres

Mounted tyres

#	Tyre size	Type of tyre	Manufacturer	Tread depth
1)	225/40 R19 93W	Summer tyres on Light alloy	Bridgestone	5mm / 5mm
2)	225/40 R19 93W	Summer tyres on Light alloy	Bridgestone	4mm / 4mm

Additional tyres

#	Tyre size	Type of tyre	Manufacturer	Tread depth
1)	205/55 R17 95V	Winter tyres on Light alloy	Bridgestone	5mm / 5mm
2)	205/55 R17 95V	Winter tyres on Light alloy	Bridgestone	6mm / 6mm

Legend: Tread depth information for tires on the left is in the first place, for tires on the right is in the second place on the axle in the direction of travel



Equipment

Standard equipment

- ADAPTIVE BRAKE with HOLD function, hill start assist, pre-filling and dry braking in wet conditions
- Airbag: Kneebag for driver
- Airbag: Windowbag for driver and front passenger
- AMG sports pedal system made of brushed stainless steel with rubber studs
- Traction control (ASR)
- ATTENTION ASSIST
- Basic services
- Brake assist, active
- diesel particulate filter
- tachometer
- DYNAMIC SELECT
- Door sills with "Mercedes-Benz" lettering
- Chassis: Comfort chassis with lowering including direct steering
- Speed Limit Assistant
- Halogen headlights with integrated LED daytime running lights
- KEYLESS-GO start function
- Rear headrests (3)
- Paint finish: Uni
- Steering wheel: Multifunction sports steering wheel in nappa leather
- Package: Light and Vision Package
- Upholstery: ARTICO man-made leather/DINAMICA microfiber
- Radio accessories: Digital radio (DAB)
- Radio accessories: USB interface in spontaneous storage & 2 USB interfaces in the rear center console
- Wheels: 45.7 cm (18") AMG light-alloy wheels in 5-twin-spoke design
- Windscreen wipers with rain sensor
- Seats: iSize child seat anchorages with Top Tether on the outer seats
- Seats: Sports seats front
- socket (12 V)
- Cruise control
- Pre-installation for vehicle monitoring
- High-visibility vest for drivers
- Central locking
- Airbag for driver and front passenger
- Airbag: Automatic passenger airbag deactivation
- Airbag: Sidebag for driver and front passenger
- AMG floor mats
- AMG styling
- Anti-lock braking system (ABS)
- Armrest for driver and passenger foldable
- Exterior mirrors left and right, heated and electrically adjustable, painted in body color
- Brake calipers with Mercedes-Benz logo at the front
- Double cup holders at the front
- Third brake light in LED technology
- ECO start-stop function
- Electronic Stability Program (ESP)
- 4-way electric window lifter
- Electric parking brake
- Transmission: Automatic 8G-DCT
- Lockable glove compartment
- Interior headliner fabric black
- THERMATIC automatic climate control
- Front headrests, integrated
- Steering wheel shift paddles
- Mercedes-Benz emergency call system
- Net in the passenger footwell
- Package: Seat comfort
- Radio: Advanced functions MBUX
- Radio: MBUX multimedia system
- Radio accessories: Communication module (LTE) for the use of Mercedes me connect services
- Tire pressure monitoring (TPMS)
- Gear lever in perforated nappa leather and additional chrome elements
- CLA-Class seat belts
- Seats: Seat backrests in the rear can be folded down 40:20:40
- Lane Keeping Assist, active
- Bumpers in body color
- Touchpad
- Pre-installation for vehicle setup
- Electronic immobilizer
- DINAMICA decorative elements

Extra equipment

- Storage compartment in center console with roller blind
- LED High-Performance Headlights (LED High-Performance Headlights offer greater safety at night and a distinctive, striking look. Thanks to LED technology, they illuminate the road better than conventional headlights – while consuming less energy.)
- Fuel tank with larger capacity (51 liters)
- Package: Business (Hard Drive Navigation - Smartphone Integration - Traffic Sign Assistant - Car Sharing Pre-installation - Navigation Connectivity Package - Seat Heating for Driver and Front Passenger - Active Parking Assist with PARKTRONIC)



- Package: Navigation Connectivity Package (The Navigation Connectivity Package complements the hard drive navigation (365) with Mercedes me connect and navigation services (01U).)
- Package: Parking package with rear view camera (including Active Parking Assistant with PARKTRONIC rear view camera)
- Radio accessories: Burmester surround sound system (with 12 speakers and 590 watts of system power. The high-performance speakers produce first-class surround sound. You can optimize this specifically for the front and rear seats and intensify the listening experience. A quality that is also visible thanks to the high-quality Burmester lettering.)
- Elimination of type marking on the trunk lid
- Package: Night (Exterior mirror housings in high-gloss black - single louvre in the radiator grille in high-gloss black - rear apron with trim element in high-gloss black - beltline trim strip and window line trim strip in high-gloss black - heat-insulating dark-tinted glass from the B-pillar onwards - 45.7 cm (18") AMG 5-spoke light-alloy wheels, aerodynamically optimized, painted black with a high-sheen finish, 225/45 R 18 on 7.5 J x 18 ET 49 - AMG front apron with front splitter in high-gloss black.)
- Wheels: 48.3 cm (19") AMG light alloy wheels 4-spoke design (painted black and rim flange high-sheen with 225/40 R 19 on 7.5 J x 19 ET 49)
- Seats: 4-way lumbar support for driver and front passenger
- Seat heating for driver and front passenger

Brief expert findings

Documents submitted	At the time of the inspection, the registration certificate Part 2 (letter) was available, but the registration certificate Part 1 (certificate) was not. (Copy)
VIN comparison	The vehicle identification number (VIN) was read from the vehicle and its conformity with the submitted documents was verified during the inspection by the undersigned.
Inspection	The inspection conditions were sufficient for the assessment of the vehicle. Lifting equipment and a pit were available for examining the vehicle.
Test drive	No test drive/maneuvering was carried out during the inspection of the vehicle.
Engine function test	An engine test run was performed.

Value reducing factors

No.	Component group	Description
1	Equipment	Vehicle key with remote control (Batterie wechseln) - Empty - Replace
2	Roof	Roof rail - left side - Stone chips - Smart repair
3	Door - rear right side	Door - Scratched - Paint
4	Front bumper	Front bumper - Scratched - Repair and paint
5	Wheel / tyres	Alloy rim - front right side (Materialabtrag) - Scratched - Replace
6	Wheel / tyres	Alloy rim - rear right side (Materialabtrag) - Scratched - Replace
7	Wheel / tyres	Alloy rim - rear left side (Materialabtrag) - Scratched - Replace

Wear and tear

No.	Component group	Description
1	Bonnet	Bonnet - Stone chips - No deduction
2	Vehicle glazing	Windscreen - Stone chips - No deduction
3	Body	Body - Scratch(es) - No deduction
4	Front bumper	Front bumper - Stone chips - No deduction
5	Roof	Roof rail - left side - dent(s) - No deduction
6	Roof	Roof rail - right side - dent(s) - No deduction
7	Body	Underbody panelling - Scratched - No deduction
8	Door - front left side	Door - Scratch(es) - No deduction

The vehicle shows signs of wear commensurate with its age and use.



Previous damages

No.	Previous damage	Extent of damage (Net)
1	Roof, Front, Rear, Provided by user / customer, from 30 Jun 2022	2.127,51 €
2	Front, Provided by user / customer, from 19 Jun 2021	2.359,88 €

Order/Scope of order

The order was placed to prepare a sales report for the vehicle described. This includes the following:

- Description of core relevant information about the vehicle
- Documentation of equipment features
(Delivery by third-party service providers)
- Documentation of damage, defects, missing parts
- Documentation of previous damage, unrepaired previous damage, repainting
- a brief visual or functional inspection of the equipment details if possible.
(Functional tests of driver assistance systems are not included in the scope of services!)
- a photo documentation of the vehicle

Basis for the order

This product is based on the Alphabet Fuhrpark GmbH guidelines for vehicle returns and valuations. The expert makes the explicit findings in each individual case objectively within the framework of the specified standards based on his or her own expertise.

The vehicle inspection takes place in a disassembled state.

Damage or defects that can only be detected during disassembly/diagnosis work or through advanced knowledge remain within the scope of the prognosis risk. An extended risk exists for concealed defects caused by fraudulent deception and not identifiable by the expert.

Damage or defects resulting from normal use or wear and tear of the vehicle will be accepted according to the applicable standard.

There was no explicit identification or monetary consideration of the expected features within the product.

Features which in their nature and severity slightly exceed normal use but do not constitute unacceptable damage will be documented and identified under signs of use if necessary.

Damage or defects which, according to the underlying standard, can no longer be attributed to normal use or wear and tear are listed in the product under "Depreciating Factors".

Depending on the product specification, a monetary ID can be provided. If this takes place, the costs can be 100% d or pro rata depending on the vehicle's age and mileage.

Previous damages

According to available information previous damages were repaired at the vehicle. Traces of repairs, which allow conclusions about the area of repair, were not recognizable during the inspection.

Comments

- Winterradsatz ist kein Bestandteil des Auslieferumfangs



Figure 1: Diagonal front (left)



Figure 2: Diagonal front (right)



Figure 3: Diagonal rear (left)



Figure 4: Diagonal rear (right)



Figure 5: Interior - front



Figure 6: Interior - rear



Figure 7: Instrument cluster



Figure 8: Instrument panel



Figure 9: interior 360° view



Figure 10: Cargo area



Figure 11: VIN



Figure 12: Mounted tyres

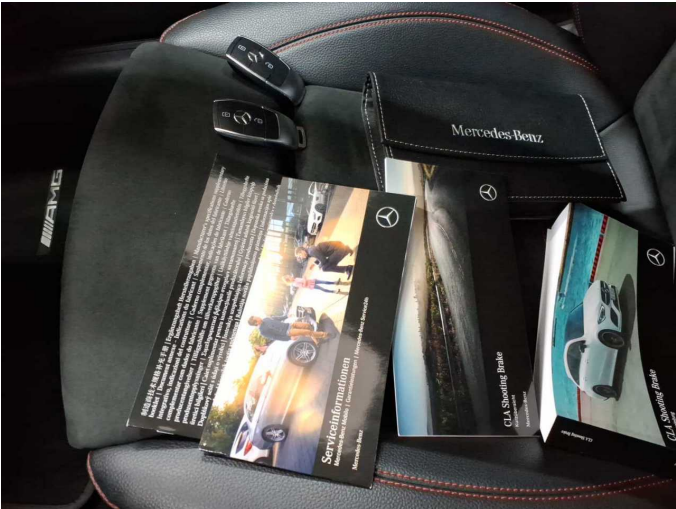


Figure 13: Documents



Figure 14: Documents



Figure 15: Documents



Figure 16: Additional tyres



Figure 17: Navigation



Figure 18: Misc.



Figure 19: Misc.



Figure 20: Misc.



Figure 21: Misc.



Figure 22: Misc.

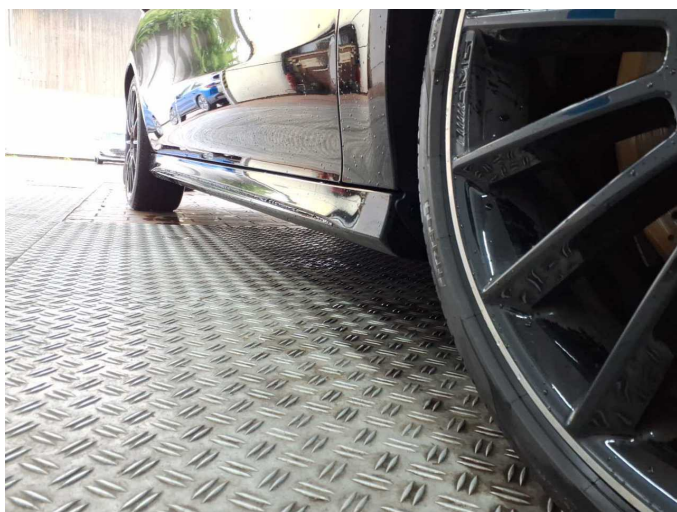


Figure 23: Misc.

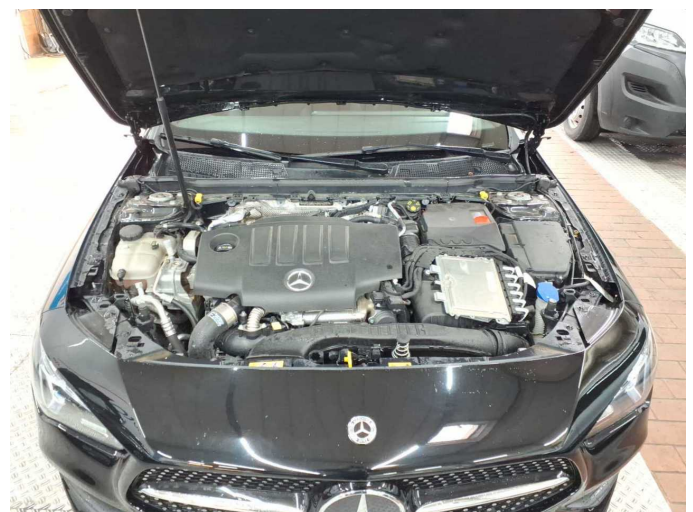


Figure 24: Misc.

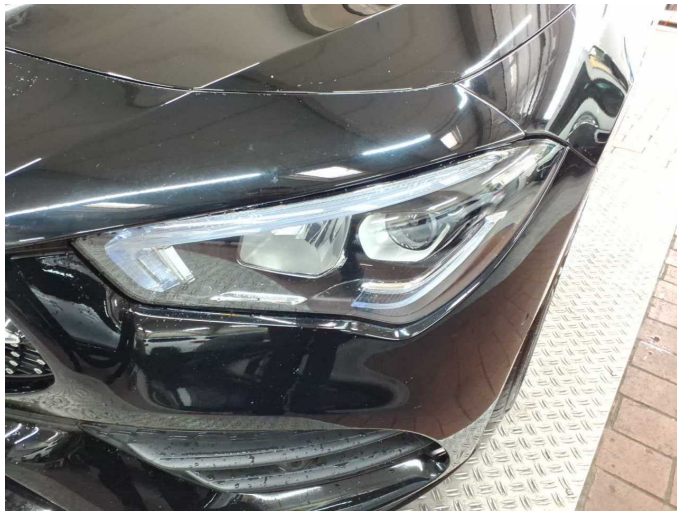


Figure 25: Misc.



Figure 26: Misc.



Figure 27: Misc.



Figure 28: Misc.



Figure 29: Misc.



Damage 1: Equipment: Vehicle key with remote control (Batterie wechseln) - Empty - Replace



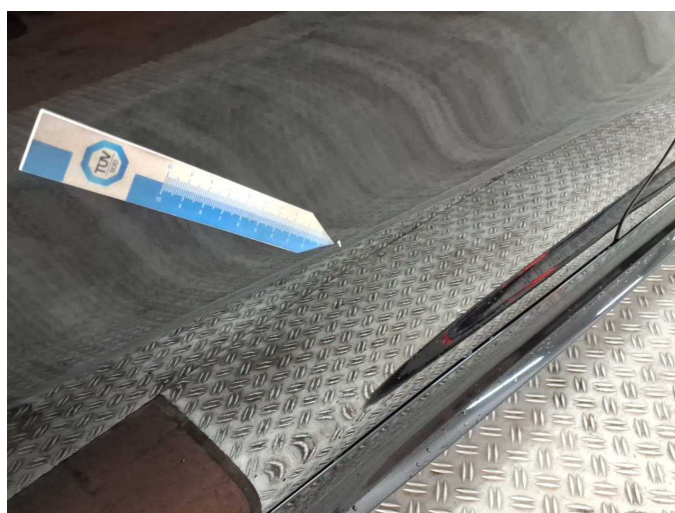
Damage 2: Roof: Roof rail - left side - Stone chips - Smart repair



Damage 2: Roof: Roof rail - left side - Stone chips - Smart repair



Damage 3: Door - rear right side: Door - Scratched - Paint



Damage 3: Door - rear right side: Door - Scratched - Paint



Damage 4: Front bumper: Front bumper - Scratched - Repair and paint



Damage 4: Front bumper: Front bumper - Scratched - Repair and paint



Damage 4: Front bumper: Front bumper - Scratched - Repair and paint



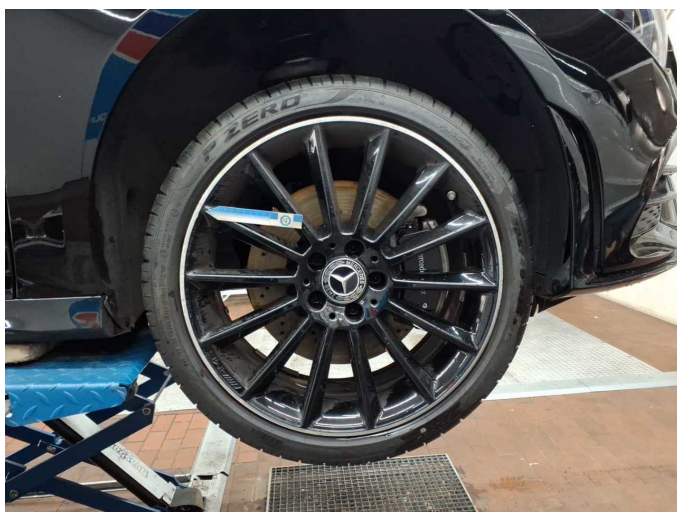
Damage 4: Front bumper: Front bumper - Scratched - Repair and paint



Damage 4: Front bumper: Front bumper - Scratched - Repair and paint



Damage 4: Front bumper: Front bumper - Scratched - Repair and paint



Damage 5: Wheel / tyres: Alloy rim - front right side (Materialabtrag) - Scratched - Replace



Damage 5: Wheel / tyres: Alloy rim - front right side (Materialabtrag) - Scratched - Replace



Damage 5: Wheel / tyres: Alloy rim - front right side (Materialabtrag) - Scratched - Replace



Damage 5: Wheel / tyres: Alloy rim - front right side (Materialabtrag) - Scratched - Replace



Damage 6: Wheel / tyres: Alloy rim - rear right side (Materialabtrag) - Scratched - Replace



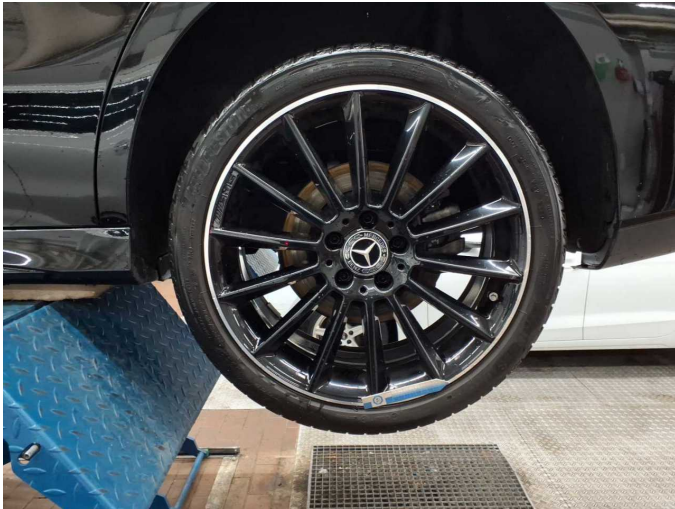
Damage 6: Wheel / tyres: Alloy rim - rear right side (Materialabtrag) - Scratched - Replace



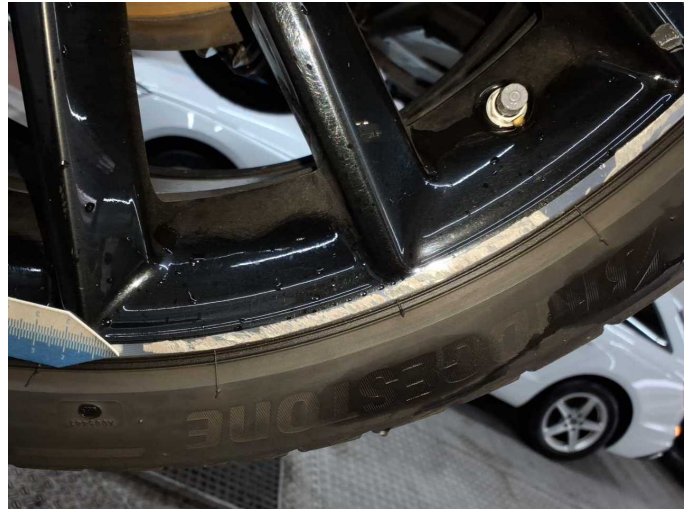
Damage 6: Wheel / tyres: Alloy rim - rear right side (Materialabtrag) - Scratched - Replace



Damage 6: Wheel / tyres: Alloy rim - rear right side (Materialabtrag) - Scratched - Replace



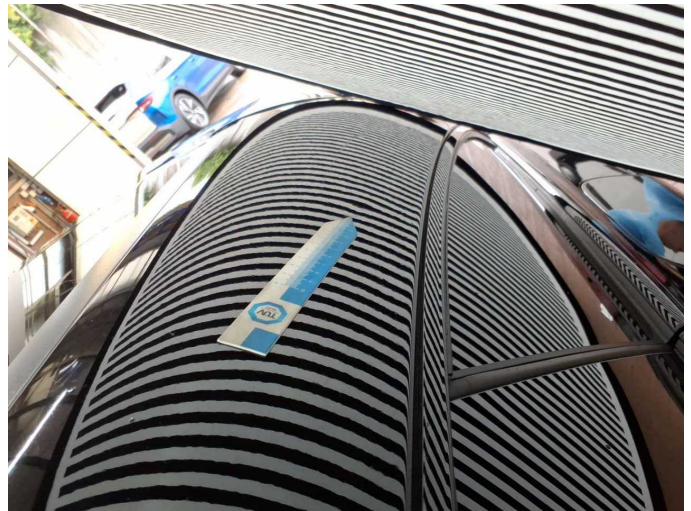
Damage 7: Wheel / tyres: Alloy rim - rear left side (Materialabtrag) - Scratched - Replace



Damage 7: Wheel / tyres: Alloy rim - rear left side (Materialabtrag) - Scratched - Replace



Wear and tear 5: Roof: Roof rail - left side - dent(s) - No deduction



Wear and tear 5: Roof: Roof rail - left side - dent(s) - No deduction



Wear and tear 6: Roof: Roof rail - right side - dent(s) - No deduction



Wear and tear 6: Roof: Roof rail - right side - dent(s) - No deduction



Wear and tear 6: Roof: Roof rail - right side - dent(s) - No deduction



Wear and tear 7: Body: Underbody panelling - Scratched - No deduction



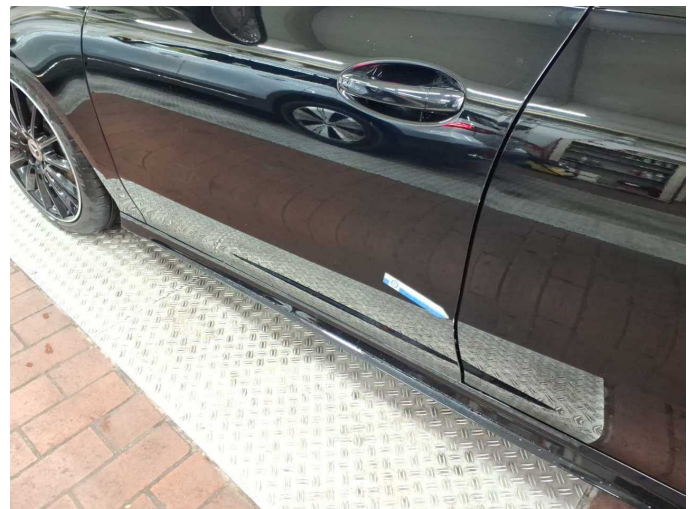
Wear and tear 7: Body: Underbody panelling - Scratched - No deduction



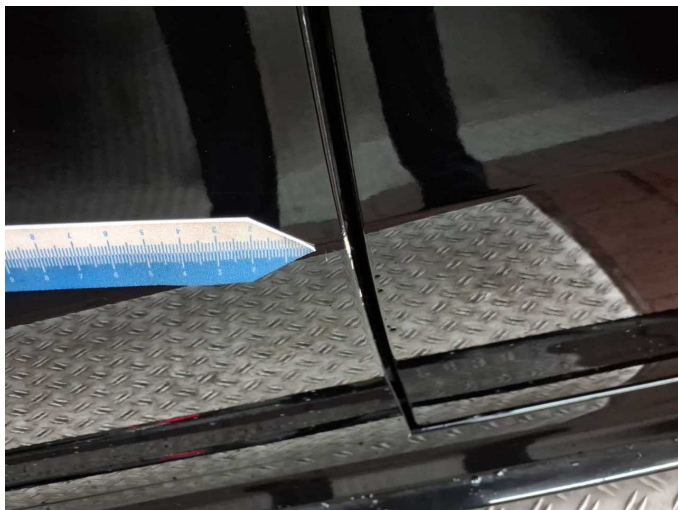
Wear and tear 7: Body: Underbody panelling - Scratched - No deduction



Wear and tear 7: Body: Underbody panelling - Scratched - No deduction



Wear and tear 8: Door - front left side: Door - Scratch(es) - No deduction



Wear and tear 8: Door - front left side: Door - Scratch(es) - No deduction



Wartungshistorie

(gemäß Auftraggeber Informationen)

Fahrgestellnummer: W1K1186141N141777

Hersteller / Modell: MERCEDES-BENZ MB CLA 220 d Shooting Brake 8G-DCT AMG Line

Datum	KM-Stand	Beschreibung
25.10.2024	80.513	Bremsscheiben+Beläge v+h; Regelwartungsdienst
19.10.2023	61.920	Regelwartungsdienst
19.01.2023	47.759	Systemtest/Eigendiagnose
18.01.2023	47.759	Regelwartungsdienst
31.01.2022	30.225	Regelwartungsdienst
16.06.2021	15.565	Kleine Inspektion