



Expertise

Protocol number: 41431239  
Order No. / Reference: 25120433-1  
Inspection date: 3 Sept 2025

Manufacturer: SMART	Model: fortwo coupe EQ
VIN: W1A4533911K474306	



Vehicle details	
Manufacturer / Type / Model / Equipment	
SMART fortwo coupe EQ	
Vehicle Identification number	W1A4533911K474306
Mileage (Read)	11,985 km
First registration	21 Apr 2022
Number of holders	1
Power / Engine displacement	41 kw /
Fuel type / Cylinder	Electric / 0
Gearbox / Number of gears	Direct drive / 1
Type of drive	Rear drive
Type of vehicle	Coupe
Colour / colour code	Kristallweiss
Doors / Seats	3 / 2
Upholstery type	Cloth
Colour of upholstery	Black-Anthracite



## Vehicle details

<b>Maintenance booklet / proof</b>	digital proof / complete	<b>Next maintenance in</b>	20,000 km
<b>Last maintenance on / at</b>	06/2023 at 10,895 km		
<b>Key is / should be</b>	2 / 2	<b>FZG documents</b>	ZB#2 (B) was available (copy), ZB#1 (S) was not available
		<b>Letter No.</b>	GF808881
<b>Previous damage / Accident</b>	None detectable	<b>Repainting</b>	None detectable
<b>Inspection conditions</b>	sufficient	<b>Lifting equipment / pit</b>	yes
<b>Test drive</b>	Not performed	<b>Engine function test</b>	Performed
<b>Manufacturer key number/ type code number</b>	2222 / ADL 00034		
<b>Emission standard</b>	2017/1151;WLTP;reine Elektrofz	<b>Fine dust sticker</b>	
<b>Permitted total weight</b>	1,310 kg	<b>Empty weight</b>	

## Tyres

### Mounted tyres

#	Tyre size	Type of tyre	Manufacturer	Tread depth
1)	165/65 R15 81T	All-season tyres on Light alloy	Goodyear	6mm / 6mm
2)	185/60 R15 84T	All-season tyres on Light alloy	Goodyear	6mm / 6mm

### Replacement

Typ	Tyre size	Type of tyre	Manufacturer	Tread depth
	Tirefit	Expiration date 12/2027		

**Legend: Tread depth information for tires on the left is in the first place, for tires on the right is in the second place on the axle in the direction of travel**

## Equipment

### Standard equipment

- 4.6 kW on-board charger (230 volts)
- Airbag driver and passenger side
- Airbag: Sidebags for driver and front passenger
- Acoustic environmental protection
- Exterior mirrors manually adjustable
- Hill start assist
- Brake assist active
- Third brake light in LED technology
- Electronic Stability Program (ESP)
- Gearbox: 1-speed
- Glove compartment, open
- Back window, heater
- Interior lighting
- Instrument cluster with monochrome LCD display and on-board computer
- Front headrests
- Headlight range adjustment
- Center console with roller blind
- Upholstery: Cloth
- Tire pressure monitoring
- Leather gear knob
- Power steering, electric
- Seats: Passenger seat with through-loading function
- smart EQ control app
- Cruise control with limiter
- Central locking with radio remote control and immobilizer
- Storage compartment in the doors
- Airbag: Kneebag for driver
- Airbag: Windowbags for driver and front passenger
- Anti-lock braking system ABS
- Outside temperature display
- Body panels black (uni)
- Roof: Full roof with black fabric cover
- Drive Lock
- Electric window lifter
- H4 halogen headlights with integrated daytime running lights in LED technology
- Rear window wiper
- Black grained instrument panel with door center panels in black fabric and accent parts in black
- Comfort windshield wipers
- Charging cable (smooth, 5 m) for wallbox and public charging stations
- Package: Cool & Audio
- Radio: Digital Radio (DAB)
- Wheels: Steel wheels 38.1 cm (15") with hub cap
- Crosswind Assist
- Seat belts
- Seats: i-Size child seat attachment on front passenger seat
- 12-volt socket with cover
- TRIDION - Safety cell black (uni)
- Additional instruments (battery charge level and power display)

### Extra equipment

- 22 kW on-board charger with fast charging function
- Velour floor mats (black)
- Package: plus (for base) (38.1 cm (15") alloy wheels in 4-twin-spoke design with tires VA 165/65 R 15 on 5J x 15, RA 185/60 R 15 on 5.5J x 15 - height-adjustable driver's seat - one-touch backrest adjustment for driver and front passenger - height-adjustable steering column - electrically adjustable and heated exterior mirrors - electric windows with comfort operation and anti-pinch protection - lockable glove compartment - load compartment cover (roller blind) with mesh pocket - breakdown kit with air compressor and sealant)
- Body panels white (uni)
- Package: advanced (smart media system connect (high-resolution 20.2 cm (8") multi-touch display, Apple CarPlay, Android Auto, Bluetooth, hands-free system, 2 USB Type-A, 1 AUX) - smartphone integration - center console with roller blind and front center armrest (folding) - rear parking aid with acoustic warning)
- Wheels: All-season tires instead of summer tires
- Wheels: 38.1 cm (15") alloy wheels in 4-double-spoke design



## Brief expert findings

Documents submitted	At the time of the inspection, the registration certificate Part 2 (letter) was available, but the registration certificate Part 1 (certificate) was not. (Copy)
VIN comparison	The vehicle identification number (VIN) was read from the vehicle and its conformity with the submitted documents was verified during the inspection by the undersigned.
Inspection	The inspection conditions were sufficient for the assessment of the vehicle. Lifting equipment and a pit were available for examining the vehicle.
Test drive	No test drive/maneuvering was carried out during the inspection of the vehicle.
Engine function test	An engine test run was performed.

## Value reducing factors

No.	Component group	Description
1	Side panel - rear right side	Sill (1) - dent(s) - Smart repair
2	Side panel - rear left side	Elbow (1) - dent(s) - Smart repair
3	Side panel - rear right side	Wheel arch (+gebrauchsspuren) - dent(s) - Smart repair
4	Body	Door seal - front left side - Broken / torn - Replace
5	Sill - left side	Sill - Dent / paintcoat damage - Smart repair
6	Front bumper	Spoiler - Deformed - Replace
7	Body	Body - Glued / labelled - De-glue / neutralise
8	Sill - right side	Sill - Damaged - Repair and paint

## Wear and tear

No.	Component group	Description
1	Rear bumper	Rear bumper - Scratch(es) - No deduction
2	Front bumper	Front bumper - Scratch(es) - No deduction

The vehicle shows signs of wear commensurate with its age and use.

## Missing parts

### Description

Trim / covers - Floor mats (Rechts)

## Order/Scope of order

The order was placed to prepare a sales report for the vehicle described. This includes the following:

- Description of core relevant information about the vehicle
- Documentation of equipment features  
(*Delivery by third-party service providers*)
- Documentation of damage, defects, missing parts
- Documentation of previous damage, unrepaired previous damage, repainting
- a brief visual or functional inspection of the equipment details if possible.  
(*Functional tests of driver assistance systems are not included in the scope of services!*)
- a photo documentation of the vehicle



## Basis for the order

This product is based on the Alphabet Fuhrpark GmbH guidelines for vehicle returns and valuations. The expert makes the explicit findings in each individual case objectively within the framework of the specified standards based on his or her own expertise.

The vehicle inspection takes place in a disassembled state.

Damage or defects that can only be detected during disassembly/diagnosis work or through advanced knowledge remain within the scope of the prognosis risk. An extended risk exists for concealed defects caused by fraudulent deception and not identifiable by the expert.

Damage or defects resulting from normal use or wear and tear of the vehicle will be accepted according to the applicable standard.

There was no explicit identification or monetary consideration of the expected features within the product.

Features which in their nature and severity slightly exceed normal use but do not constitute unacceptable damage will be documented and identified under signs of use if necessary.

Damage or defects which, according to the underlying standard, can no longer be attributed to normal use or wear and tear are listed in the product under "Depreciating Factors".

Depending on the product specification, a monetary ID can be provided. If this takes place, the costs can be 100% d or pro rata depending on the vehicle's age and mileage.

## Previous damages

Apparently, no repaired previous damage could be found on the vehicle.





Figure 1: Diagonal front (left)



Figure 2: Diagonal front (right)



Figure 3: Diagonal rear (left)



Figure 4: Diagonal rear (right)



Figure 5: Interior - front



Figure 6: Instrument cluster





Figure 7: Instrument panel



Figure 8: Interior 360° view

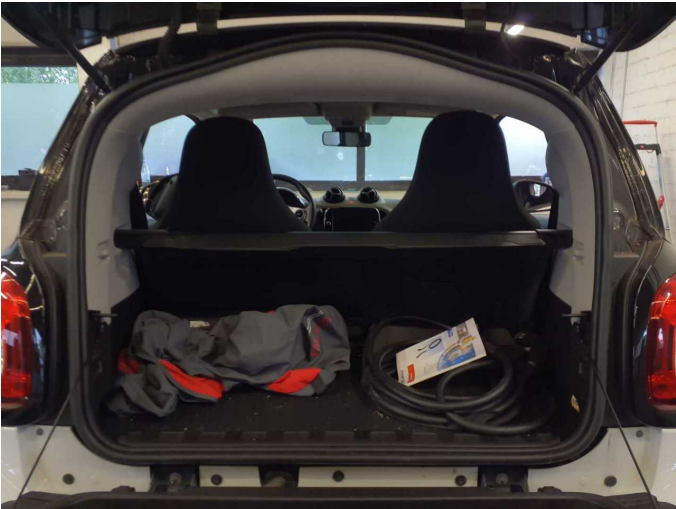


Figure 9: Cargo area



Figure 10: VIN



Figure 11: Mounted tyres

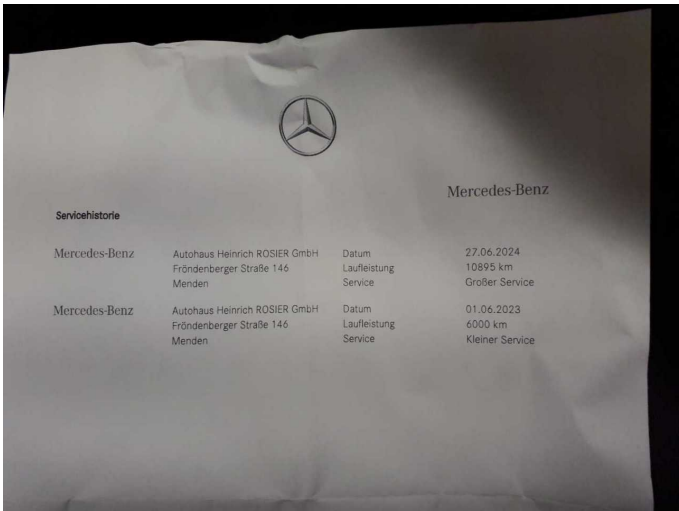


Figure 12: Documents

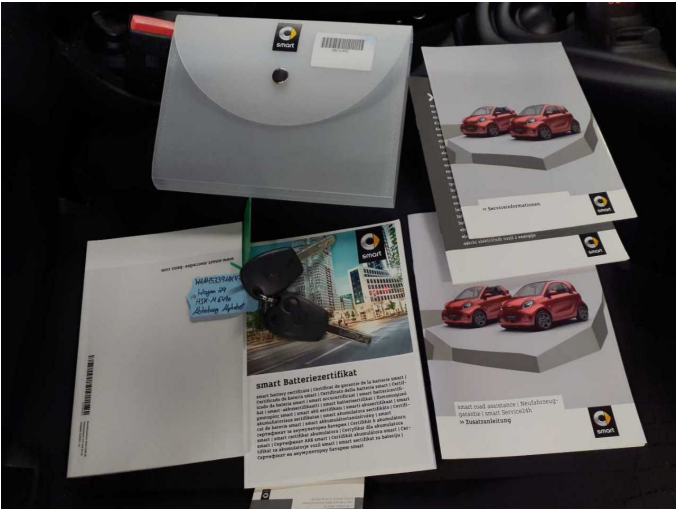


Figure 13: Documents



Figure 14: Misc.



Figure 15: Misc.



Figure 16: Misc.



Figure 17: Misc.



Figure 18: Misc.





Figure 19: Misc.



Figure 20: Misc.

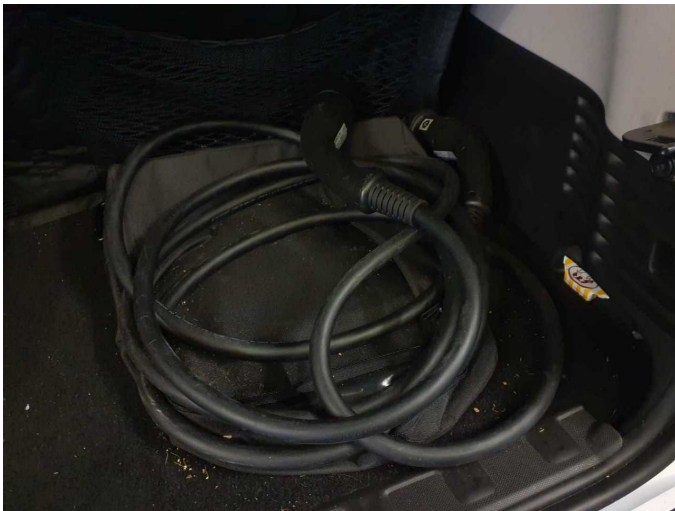


Figure 21: Misc.



Figure 22: Misc.



Figure 23: Misc.



Figure 24: Misc.





**Figure 25:** Misc.



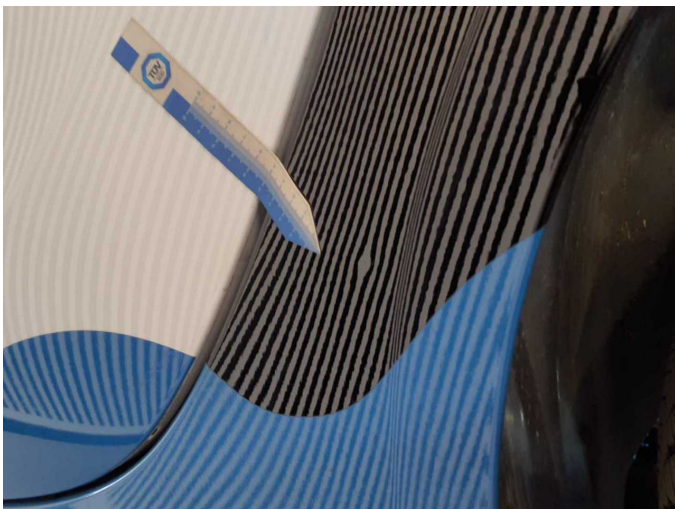
**Damage 1:** Side panel - rear right side: Sill (1) - dent(s) - Smart repair



**Damage 1:** Side panel - rear right side: Sill (1) - dent(s) - Smart repair



**Damage 2:** Side panel - rear left side: Elbow (1) - dent(s) - Smart repair



**Damage 2:** Side panel - rear left side: Elbow (1) - dent(s) - Smart repair

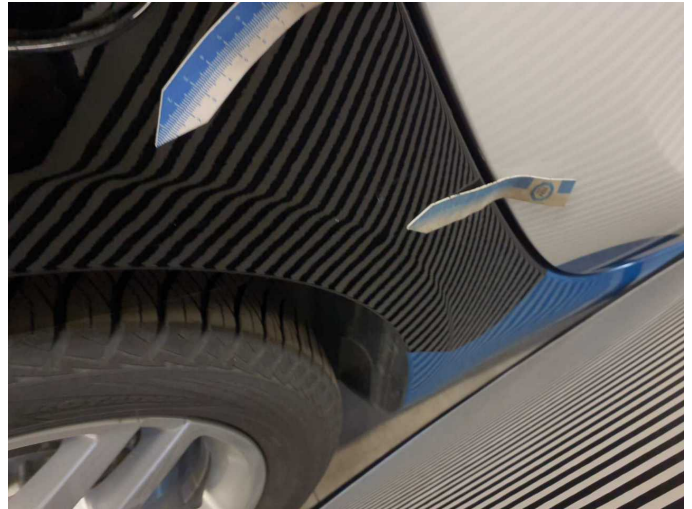


**Damage 3:** Side panel - rear right side: Wheel arch (+gebrauchsspuren) - dent(s) - Smart repair





**Damage 3:** Side panel - rear right side: Wheel arch (+gebrauchsspuren) - dent(s) - Smart repair



**Damage 3:** Side panel - rear right side: Wheel arch (+gebrauchsspuren) - dent(s) - Smart repair



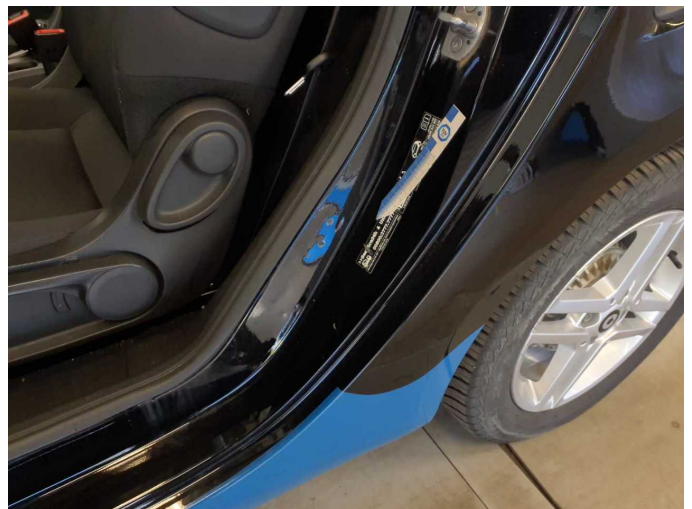
**Damage 4:** Body: Door seal - front left side - Broken / torn - Replace



**Damage 4:** Body: Door seal - front left side - Broken / torn - Replace

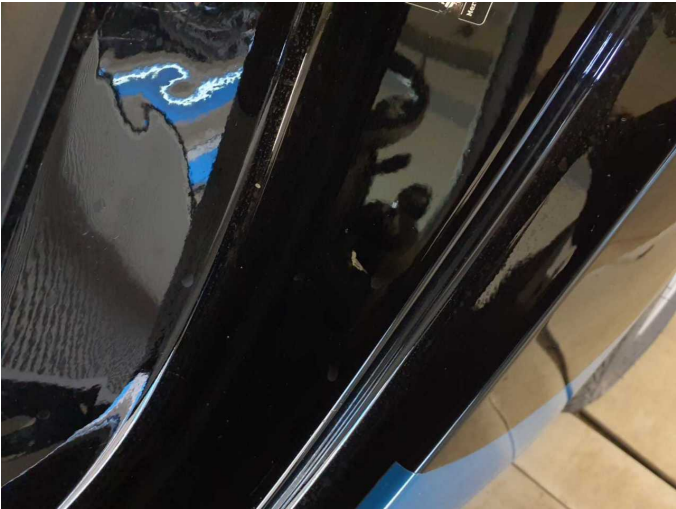


**Damage 4:** Body: Door seal - front left side - Broken / torn - Replace



**Damage 5:** Sill - left side: Sill - Dent / paintcoat damage - Smart repair





Damage 5: Sill - left side: Sill - Dent / paintcoat damage - Smart repair



Damage 5: Sill - left side: Sill - Dent / paintcoat damage - Smart repair



Damage 5: Sill - left side: Sill - Dent / paintcoat damage - Smart repair



Damage 5: Sill - left side: Sill - Dent / paintcoat damage - Smart repair



Damage 5: Sill - left side: Sill - Dent / paintcoat damage - Smart repair



Damage 5: Sill - left side: Sill - Dent / paintcoat damage - Smart repair





**Damage 5:** Sill - left side: Sill - Dent / paintcoat damage - Smart repair



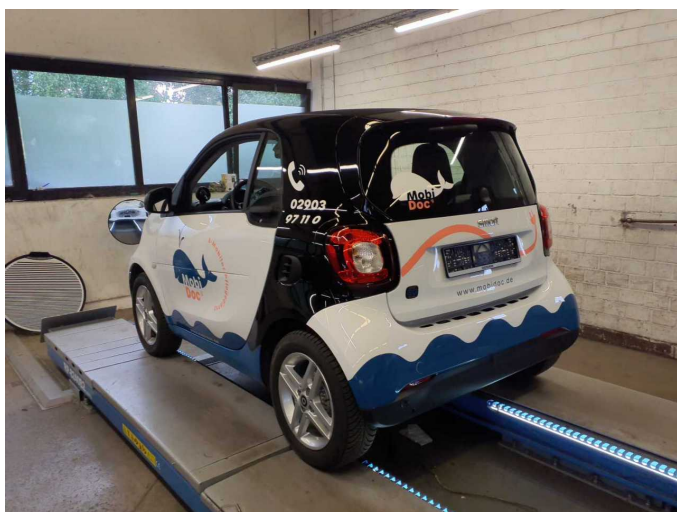
**Damage 6:** Front bumper: Spoiler - Deformed - Replace



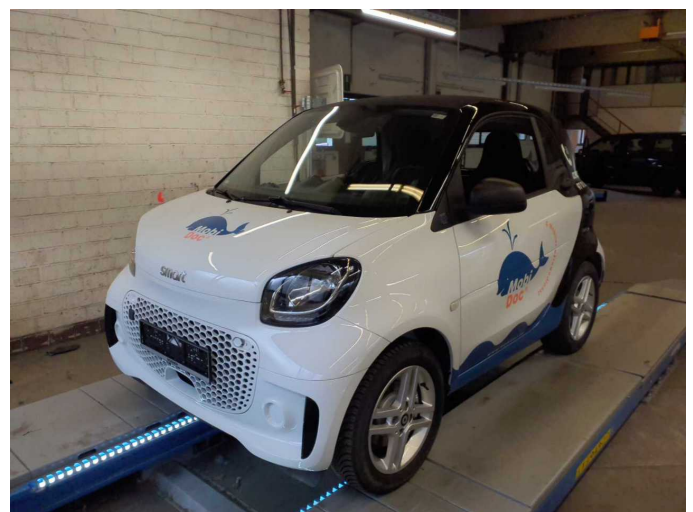
**Damage 6:** Front bumper: Spoiler - Deformed - Replace



**Damage 6:** Front bumper: Spoiler - Deformed - Replace



**Damage 7:** Body: Body - Glued / labelled - De-glue / neutralise



**Damage 7:** Body: Body - Glued / labelled - De-glue / neutralise





**Damage 7:** Body: Body - Glued / labelled - De-glue / neutralise



**Damage 7:** Body: Body - Glued / labelled - De-glue / neutralise



**Damage 8:** Sill - right side: Sill - Damaged - Repair and paint



**Damage 8:** Sill - right side: Sill - Damaged - Repair and paint



**Damage 8:** Sill - right side: Sill - Damaged - Repair and paint



**Damage 8:** Sill - right side: Sill - Damaged - Repair and paint





**Damage 8:** Sill - right side: Sill - Damaged - Repair and paint



**Wear and tear 1:** Rear bumper: Rear bumper - Scratch(es) - No deduction



**Wear and tear 1:** Rear bumper: Rear bumper - Scratch(es) - No deduction



**Missing part 1:** Trim / covers: Floor mats (Rechts) - Missing - Replace