



Expertise

Protocol number: 39318300  
Order No. / Reference: 24647767  
Inspection date: 7 Apr 2025

Manufacturer: Opel

Model: Insignia Sports Tourer 2.0 Diesel Aut. Business Elegance

VIN: W0VZT8GP8M1010829



Vehicle details	
Manufacturer / Type / Model / Equipment	
Opel Insignia Sports Tourer 2.0 Diesel Aut. Business Elegance	
Vehicle Identification number	W0VZT8GP8M1010829
Mileage (Read)	63,564 km
First registration	18 Feb 2021
Number of holders	1
Power / Engine displacement	128 kw / 1,955 ccm
Fuel type / Cylinder	Diesel / 4
Gearbox / Number of gears	Automatic / 8
Type of drive	Front drive
Type of vehicle	Station wagon
Colour / colour code	Argonsilber Metallic
Doors / Seats	5 / 5
Upholstery type	Alcantara / Leather
Colour of upholstery	Black



## Vehicle details

<b>Maintenance booklet / proof</b>	Available / complete	<b>Next maintenance in</b>	90 %
<b>Last maintenance on / at</b>	03/2025 at 63,178 km		
<b>Key is / should be</b>	2 / 2	<b>FZG documents</b>	ZB#2 (B) was available (copy), ZB#1 (S) was not available
		<b>Letter No.</b>	FW986942
<b>Previous damage / Accident</b>	None detectable	<b>Repainting</b>	None detectable
<b>Inspection conditions</b>	Sufficient	<b>Lifting equipment / pit</b>	yes
<b>Test drive</b>	Not performed	<b>Engine function test</b>	Performed
<b>Manufacturer key number/ type code number</b>	1844 / AMC 00126		
<b>Emission standard</b>	EURO6;WLTP;AP;PI/CI; M, N1 I	<b>Fine dust sticker</b>	
<b>Permitted total weight</b>	2,215 kg	<b>Empty weight</b>	

## Tyres

### Mounted tyres

#	Tyre size	Type of tyre	Manufacturer	Tread depth
1)	225/55 R17 101V	Winter tyres on Light alloy	Continental	5mm / 6mm
2)	225/55 R17 101V	Winter tyres on Light alloy	Continental	6mm / 5mm

### Additional tyres

#	Tyre size	Type of tyre	Manufacturer	Tread depth
1)	245/45 R18 100Y	Summer tyres on Light alloy	Bridgestone	6mm / 6mm
2)	245/45 R18 100Y	Summer tyres on Light alloy	Bridgestone	6mm / 6mm

### Replacement

Typ	Tyre size	Type of tyre	Manufacturer	Tread depth
	Tirefit	Expiration date 12/2024		

**Legend:** Tread depth information for tires on the left is in the first place, for tires on the right is in the second place on the axle in the direction of travel



## Equipment

### Standard equipment

- |  |   |
|--|---|
| <ul style="list-style-type: none"> <li>• Storage compartments</li> <li>• Airbag: Head airbag front and rear outside</li> <li>• Ambient lighting</li> <li>• Exterior mirrors for driver and passenger side electrically adjustable and heated</li> <li>• Roof rails, silver anodized</li> <li>• tachometer</li> <li>• Electronic Stabilization Program (ESP - Plus)</li> <li>• Front collision warning with pedestrian detection and automatic emergency braking</li> <li>• Cruise control</li> <li>• Rear window wiper</li> <li>• Automatic climate control two zones</li> <li>• Headrests, rear (3 pieces)</li> <li>• LED fog lights</li> <li>• Steering column height/length adjustable</li> <li>• Make-up mirrors in both sun visors, illuminated</li> <li>• Package: Charging (Sports Tourer)</li> <li>• Package: Innovations 1</li> <li>• Parking brake, electric</li> <li>• Upholstery: Monita fabric/premium leather look</li> <li>• Radio: Digital radio reception DAB+</li> <li>• Radio accessories: 2 USB interfaces</li> <li>• Tire repair kit</li> <li>• Wheels: Alloy wheels 8.5 J x 18 (multi-spoke)</li> <li>• Power steering</li> <li>• Seat belts: Three-point seat belts on all seats</li> <li>• Visual equipment</li> <li>• lane keeping assist</li> <li>• Bumpers painted in body color</li> <li>• Pre-installation for ISOFIX child seat retention system</li> <li>• Heat-insulating glazing, green tinted</li> <li>• Ignition key, second, foldable</li> </ul> | <ul style="list-style-type: none"> <li>• Airbag: Front airbags (multi-stage) and side airbags, driver and front passenger</li> <li>• Anti-lock braking system (ABS)</li> <li>• Hill Start Assist</li> <li>• Brake light, third</li> <li>• diesel particulate filter</li> <li>• Electronic brake force distribution (EBD)</li> <li>• Electric windows front and rear</li> <li>• Pedestrian protection including active bonnet</li> <li>• Luggage compartment cover</li> <li>• Transmission: 8-speed automatic transmission</li> <li>• Child safety lock in the rear doors, manual</li> <li>• Front headrests</li> <li>• LED headlights</li> <li>• LED daytime running lights including LED indicators, front and LED taillights</li> <li>• Center armrest, front</li> <li>• Package: Easy-Access</li> <li>• Park &amp; Go with rear view camera, digital</li> <li>• Parking pilot, front and rear parking aid</li> <li>• Quickheat rapid heating system</li> <li>• Radio: Multimedia Navi Pro with 8" touchscreen color display</li> <li>• Tire pressure display</li> <li>• Rear seat backrest with FlexFold function, foldable in a 40:20:40 ratio</li> <li>• safety net</li> <li>• Seats: Ergonomic active seat (AGR) driver and passenger</li> <li>• Start/Stop system</li> <li>• Traction Control (TC) Plus</li> <li>• Immobiliser</li> <li>• Central locking with radio remote control</li> </ul> |
|--|---|

### Extra equipment

- |   |   |
|---|---|
| <ul style="list-style-type: none"> <li>• GS Line interior equipment (GS Line sports leather steering wheel, heated - aluminum - sports pedals - roof lining in black)</li> <li>• Package: Winter 3 (Seat heating, multi-stage, front/rear Heated leather steering wheel Seat comfort equipment 1 (Driver's seat 8-way electrically adjustable length, height, backrest and seat inclination, electro-pneumatic lumbar support, headrest height and inclination, pocket on front seat back, memory function for driver's seat and outside mirror, electro-pneumatic adjustment of driver's side bolsters, driver massage function, outside mirrors with ambient lighting electrically adjustable, heated and adjustable) Heated ThermoTec windshield)</li> <li>• Paint finish: metallic</li> </ul> | <ul style="list-style-type: none"> <li>• Package: Innovations 2 (Sports Tourer automatic transmission) (Head-up display, Adaptive Cruise Control (3rd generation), Stop &amp; Go function, Forward Collision Warning with pedestrian detection and automatic emergency braking, active from 4 km/h, range 150 m. If there is a risk of collision, the braking system is prepared and emergency braking / automatic emergency braking is initiated if necessary, Lane and Lane Keeping Assist, Keyless locking and starting system, Keyless Open &amp; Start, Sensor-controlled tailgate, electric, Loading sill protection, stainless steel)</li> </ul> |
|---|---|



- Solar Protect thermal insulation glazing (in the rear, heavily tinted)
- Upholstery: Alcantara upholstery, black (Ergonomic active seat (AGR), driver and passenger (length, height, and backrest angle manually adjustable, seat angle electrically adjustable, lumbar support electropneumatically adjustable in height and length, extendable thigh support, manual, headrest, height and angle adjustable) - Seat contact surfaces partially in Alcantara/man-made leather - Side airbags, rear outside - Center armrest, rear, with cup holder and through-loading option - Rear seat backrest with FlexFold, 40:20:40 forward folding)

## Brief expert findings

Documents submitted	At the time of the inspection, the registration certificate part 2 (letter) was available, but the registration certificate part 1 (certificate) was not available. (Copy)
VIN comparison	The vehicle identification number (VIN) was read and the undersigned verified that it matched the documents submitted during the inspection.
Inspection	The inspection conditions were sufficient to assess the vehicle. The inspection was carried out using the lighting conditions provided by the photo system included in the report. Lifting equipment and a pit were available for examining the vehicle.
Test drive	No test drive/maneuvering was carried out during the inspection of the vehicle.
Engine function test	An engine test run was performed.

## Value reducing factors

No.	Component group	Description
1	Equipment	Tirefit filler - Expired - Replace
2	Wing mirror - left side	Cap - Scratch(es) - Paint
3	2nd wheel set	1 tyre - Damaged - Replace
4	Front bumper	Front bumper - Scratch(es) - Smart repair

## Wear and tear

No.	Component group	Description
1	Trim / covers	Boot lid - interior trim - Scratch(es) - No deduction
2	Vehicle glazing	Windscreen - Stone chips - No deduction
3	Bonnet	Bonnet - Stone chips - No deduction
4	Rear bumper	Rear bumper (Ladekante) - Scratch(es) - No deduction
5	Boot lid / rear door	Boot lid - dent(s) - No deduction
6	Bonnet	Bonnet - dent(s) - No deduction

The vehicle shows signs of wear commensurate with its age and use.



## Order/Scope of order

The order was placed to prepare a sales report for the vehicle described. This includes the following:

- Description of core relevant information about the vehicle
- Documentation of equipment features  
*(Delivery by third-party service providers)*
- Documentation of damage, defects, missing parts
- Documentation of previous damage, unrepaired previous damage, repainting
- a brief visual or functional inspection of the equipment details if possible.  
*(Functional tests of driver assistance systems are not included in the scope of services!)*
- a photo documentation of the vehicle

## Basis for the order

This product is based on the Alphabet Fuhrpark GmbH guidelines for vehicle returns and valuations. The expert makes the explicit findings in each individual case objectively within the framework of the specified standards based on his or her own expertise.

The vehicle inspection takes place in a disassembled state.

Damage or defects that can only be detected during disassembly/diagnosis work or through advanced knowledge remain within the scope of the prognosis risk. An extended risk exists for concealed defects caused by fraudulent deception and not identifiable by the expert.

Damage or defects resulting from normal use or wear and tear of the vehicle will be accepted according to the applicable standard.

There was no explicit identification or monetary consideration of the expected features within the product.

Features which in their nature and severity slightly exceed normal use but do not constitute unacceptable damage will be documented and identified under signs of use if necessary.

Damage or defects which, according to the underlying standard, can no longer be attributed to normal use or wear and tear are listed in the product under "Depreciating Factors".

Depending on the product specification, a monetary ID can be provided. If this takes place, the costs can be 100% d or pro rata depending on the vehicle's age and mileage.

## Previous damages

Neither repaired nor non-repaired previous damage to the vehicle could be determined.

## Comments

Das Fahrzeug weist rundherum erhöhte Lackwerte auf.





**Figure 1:** Diagonal front (left)



**Figure 2:** Diagonal front (right)



**Figure 3:** Diagonal rear (left)



**Figure 4:** Diagonal rear (right)



**Figure 5:** Interior - front



**Figure 6:** Interior - rear





Figure 7: Instrument cluster



Figure 8: Instrument panel



Figure 9: interior 360° view



Figure 10: Cargo area

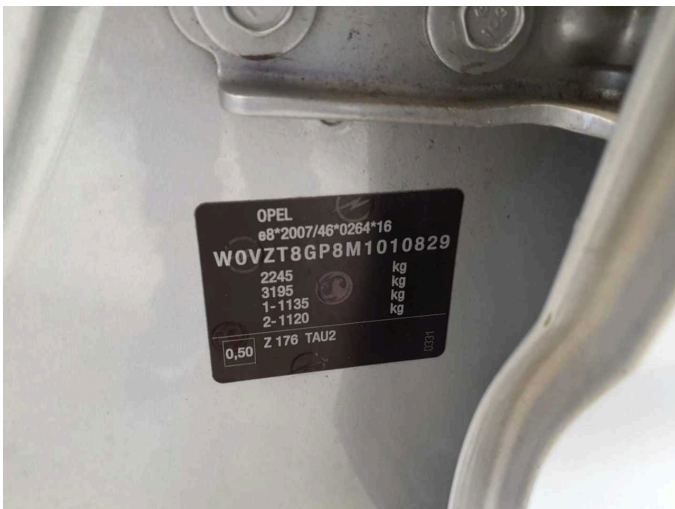


Figure 11: VIN



Figure 12: Mounted tyres





Figure 13: Documents



Figure 14: Additional tyres

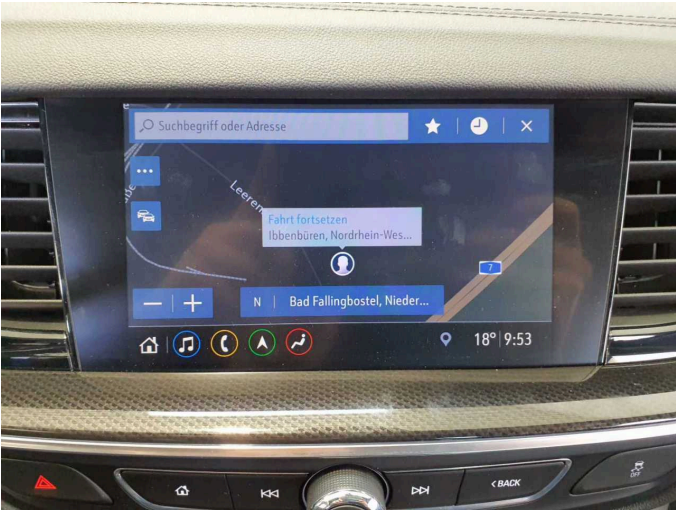


Figure 15: Navigation



Figure 16: Misc.



Figure 17: Misc.

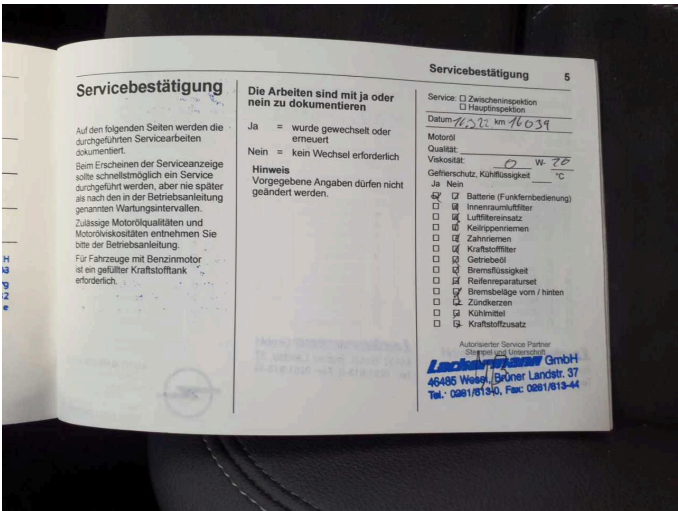


Figure 18: Misc.



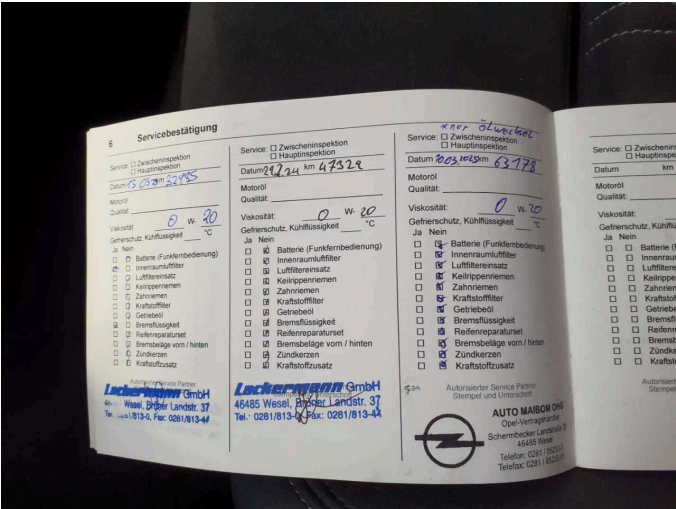


Figure 19: Misc.



Figure 20: Misc.



Figure 21: Misc.



Figure 22: Misc.



Figure 23: Misc.

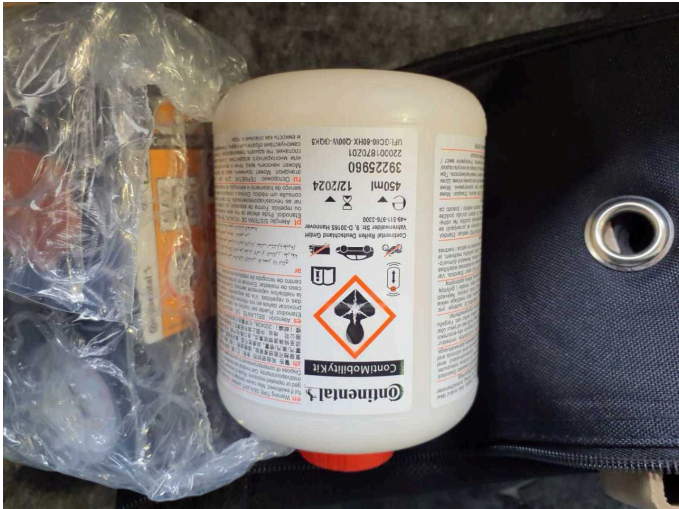


Figure 24: Misc.





Figure 25: Misc.



Damage 1: Equipment: Tirefit filler - Expired - Replace



Damage 2: Wing mirror - left side: Cap - Scratch(es) - Paint



Damage 2: Wing mirror - left side: Cap - Scratch(es) - Paint



Damage 2: Wing mirror - left side: Cap - Scratch(es) - Paint



Damage 2: Wing mirror - left side: Cap - Scratch(es) - Paint





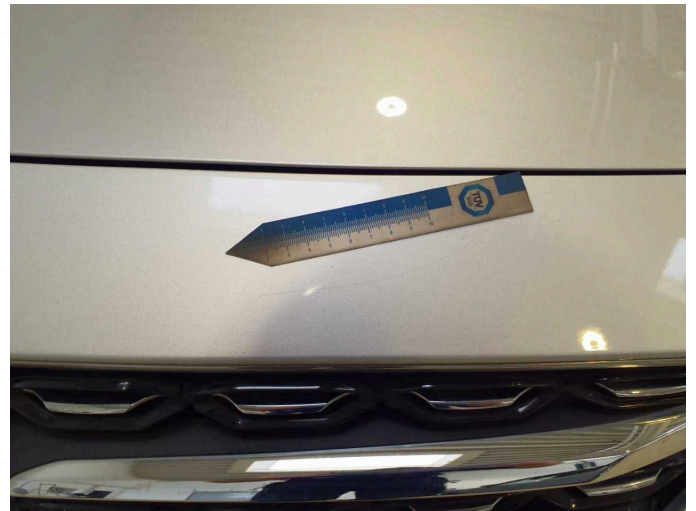
**Damage 3:** 2nd wheel set: 1 tyre - Damaged - Replace



**Damage 3:** 2nd wheel set: 1 tyre - Damaged - Replace



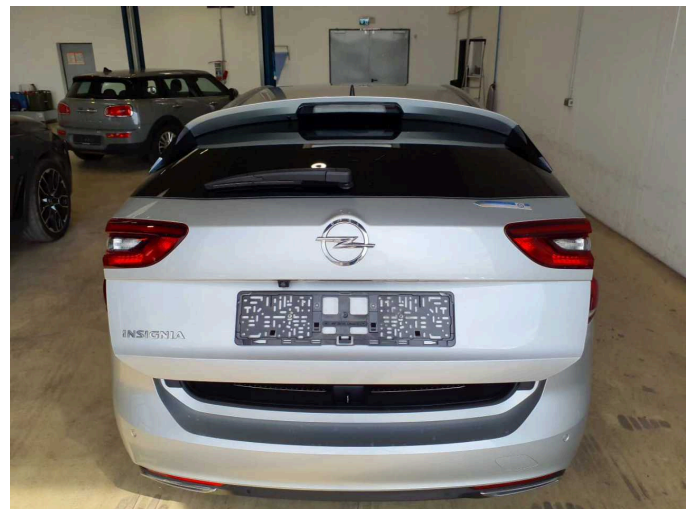
**Damage 4:** Front bumper: Front bumper - Scratch(es) - Smart repair



**Damage 4:** Front bumper: Front bumper - Scratch(es) - Smart repair



**Damage 4:** Front bumper: Front bumper - Scratch(es) - Smart repair



**Wear and tear 5:** Boot lid / rear door: Boot lid - dent(s) - No deduction





**Wear and tear 5:** Boot lid / rear door: Boot lid - dent(s) - No deduction



**Wear and tear 5:** Boot lid / rear door: Boot lid - dent(s) - No deduction



**Wear and tear 6:** Bonnet: Bonnet - dent(s) - No deduction



**Wear and tear 6:** Bonnet: Bonnet - dent(s) - No deduction



**Wear and tear 6:** Bonnet: Bonnet - dent(s) - No deduction