



Expertise

Protocol number: 40077970
Order No. / Reference: 24614575
Inspection date: 6 Jun 2025

Manufacturer: Opel

Model: Insignia Sports Tourer 2.0 Direct InjectionTurbo Elegance

VIN: W0VZT8ER9N1005015



Vehicle details	
Manufacturer / Type / Model / Equipment	
Opel Insignia Sports Tourer 2.0 Direct InjectionTurbo Elegance	
Vehicle Identification number	W0VZT8ER9N1005015
Mileage (Read)	45,002 km
First registration	5 Apr 2022
Number of holders	1
Power / Engine displacement	147 kw / 1,998 ccm
Fuel type / Cylinder	Petrol / 4
Gearbox / Number of gears	Automatic / 9
Type of drive	Front drive
Type of vehicle	Station wagon
Colour / colour code	Diamant Schwarz Metallic
Doors / Seats	5 / 5
Upholstery type	Cloth
Colour of upholstery	Black-Grey
Vehicle with smoke odor	no



Vehicle details

Maintenance booklet / proof	digital proof / incomplete	Next maintenance in	78 %
Last maintenance on / at	02/2025 at 31,347 km		
Key is / should be	2 / 2	FZG documents	ZB#2 (B) was available (copy), ZB#1 (S) was not available
		Letter No.	GJ649585
Previous damage / Accident	Detectable	Repainting	None detectable
Inspection conditions	Sufficient	Lifting equipment / pit	yes
Test drive	Not performed	Engine function test	Performed
Manufacturer key number/ type code number	1844 / ALZ 00134		
Emission standard	EURO6;WLTP;AP;PI/CI; M, N1 I	Fine dust sticker	
Permitted total weight	2,215 kg	Empty weight	

Tyres

Mounted tyres

#	Tyre size	Type of tyre	Manufacturer	Tread depth
1)	225/55 R17 101V	Winter tyres on Light alloy	Pirelli	5mm / 5mm
2)	225/55 R17 101V	Winter tyres on Light alloy	Pirelli	7mm / 7mm

Additional tyres

#	Tyre size	Type of tyre	Manufacturer	Tread depth
1)	225/55 R17 97W	Summer tyres on Light alloy	Bridgestone	5mm / 5mm
2)	225/55 R17 97W	Summer tyres on Light alloy	Bridgestone	5mm / 5mm

Replacement

Typ	Tyre size	Type of tyre	Manufacturer	Tread depth
	Tirefit	Expiration date 10/2026		

Legend: Tread depth information for tires on the left is in the first place, for tires on the right is in the second place on the axle in the direction of travel

Equipment

Standard equipment

- Storage compartments (storage compartment in the center console, pockets in the front doors, suitable for 1.5-liter drinks bottles, pockets in the rear doors, suitable for 1-liter drinks bottles, cup holder in the center console, illuminated glove compartment)
- Anti-lock braking system (ABS) (with cornering brake control (CBC) and brake assist)
- Hill Start Assist
- Roof rails, silver anodized
- tachometer
- Electronic Stabilization Program (ESP - Plus)
- Chassis: FlexRide Premium chassis (Innovative chassis system with adaptive driving style recognition and three selectable driving modes: Standard, Sport (customizable) and Tour, incl. - Electronic damper control - Speed-dependent power steering - Networking of all driving dynamics systems)
- Cruise control
- Transmission: 9-speed automatic transmission
- Rear window wiper
- Automatic climate control two zones
- Headrests, rear (3 pieces) (height adjustable)
- LED fog lights
- Steering column height/length adjustable
- Make-up mirrors in both sun visors, illuminated
- Gasoline particulate filter (maintenance-free)
- Electric parking brake (including 12-volt socket)
- Parking pilot, front and rear parking aid
- Upholstery: Billy fabric, black
- Radio: Digital radio reception DAB+
- Radio: Multimedia radio with 7" touchscreen color display (7 speakers, music recognition (title, album, artist, cover) for audio devices with USB connection, Bluetooth audio streaming, hands-free system via Bluetooth, smartphone integration via Apple CarPlay and Android Auto, 4 x 20 watts, 50 favorite memories, speed-dependent volume and bass control, FM/AM, Autostore, RDS-EON, 2 USB ports and Aux-in, steering wheel remote control, 3.5" driver information display, dual tuner, graphic equalizer)
- Seat belts: Three-point seat belts on all seats (belt force limiters and pretensioners on the front and outer rear seats - warning audible and illuminated warning lights for unfastened seat belts on all seats)
- Lane Keeping Assist (warning if the driver unintentionally leaves the lane (between 60 km/h and 180 km/h) via a warning light in the driver information display. The Lane Keeping Assist also alerts the driver by gently counter-steering, but does not control the vehicle continuously.)
- Bumpers painted in body color
- Traction Control (TC) Plus (traction control with engine and brake intervention)
- Airbag: Front airbags and side airbags, driver and front passenger (front and side airbags, front passenger, deactivatable)
- Airbag: Head airbag front and rear outside
- Ambient lighting (dashboard and doors (front))
- Exterior mirrors for driver and passenger side electrically adjustable and heated (manually folding)
- Brake light, third
- Hexagon decorative strip
- Electronic brake force distribution (EBD)
- Driver information display, 3.5"
- Electric windows front and rear (with touch function and anti-pinch protection)
- Forward collision warning with pedestrian detection and automatic emergency braking
- Pedestrian protection including active bonnet
- Luggage compartment cover (extendable with convenient operation)
- Back window, heater
- Child safety lock in the rear doors, manual
- Front headrests (height adjustable)
- LED headlights (headlight range adjustment, automatic)
- LED daytime running lights including LED indicators, front and LED taillights
- Center armrest, front
- Package: Innovations 1 (IntelliLux LED Pixel Light - Adaptive LED matrix headlights: city light, motorway light, country road light, static curve light, cornering light, parking light, high beam: traffic-dependent dimming taking into account preceding and oncoming traffic, automatic headlight range control - traffic sign assistant)
- Tire repair kit (including tire sealant and 12-volt compressor (without jack))
- Tire pressure indicator (with tire pressure warning - direct system with automatic calibration after wheel change)
- Wheels: Light alloy wheels 7.5 J x 17 in 5 double-spoke design (tires 215/55 R 17)
- Rear seat backrest folds forward in a 60:40 ratio
- Power steering (speed-dependent)
- Safety net (for installation behind the 1st or 2nd row of seats)
- Visibility equipment (rain sensor, front)
- Seats: Ergonomic active seat (AGR) driver (length, height and backrest angle manually adjustable - seat angle, electrically adjustable - lumbar support, electropneumatically adjustable in height and length - extendable thigh support, manual - headrest, height and angle adjustable)
- Start/Stop System (Reinforced starter, high-performance battery, brake energy recovery, switch to deactivate the start/stop function)
- Pre-installation for ISOFIX child seat mounting system (rear)
- Central locking with radio remote control (and interior switches)



- Immobiliser
- Heat-insulating glazing, green tinted
- Ignition key, second, foldable

Extra equipment

- Paint finish: metallic
- winter tires
- Package: Winter 1 (AGR, driver) (Seat heating, multi-stage, driver and front passenger - Heated leather steering wheel - Rear seat backrest can be folded forward in a 60:40 ratio - Ergonomic active seat (AGR), driver (length, height and backrest angle manually adjustable, seat angle electrically adjustable, lumbar support electropneumatically adjustable in height and length, extendable thigh support manually, headrest height and angle adjustable) - Heated ThermoTec windshield)

Brief expert findings

Documents submitted	At the time of the inspection, the registration certificate part 2 (letter) was available, but the registration certificate part 1 (certificate) was not available. (Copy)
VIN comparison	The vehicle identification number (VIN) was read and the undersigned verified that it matched the documents submitted during the inspection.
Inspection	The inspection conditions were sufficient for the assessment of the vehicle. Lifting equipment and a pit were available for examining the vehicle.
Test drive	No test drive/maneuvering was carried out during the inspection of the vehicle.
Engine function test	An engine test run was performed.

Value reducing factors

No.	Component group	Description
1	Door - front left side	Door (Lackstift nachgebessert) - Scratch(es) - Smart repair
2	Bonnet	Bonnet - Scratched - Paint

Wear and tear

No.	Component group	Description
1	Vehicle glazing	Windscreen - Stone chips - No deduction
2	Boot lid / rear door	Boot lid - dent(s) - No deduction
3	Side panel - rear left side	Side panel - dent(s) - No deduction

The vehicle shows signs of wear commensurate with its age and use.

Previous damages

No.	Previous damage	Extent of damage (Net)
1	Side right, Provided by user / customer, from 2 Feb 2024	4.459,44 €



Order/Scope of order

The order was placed to prepare a sales report for the vehicle described. This includes the following:

- Description of core relevant information about the vehicle
- Documentation of equipment features
(Delivery by third-party service providers)
- Documentation of damage, defects, missing parts
- Documentation of previous damage, unrepaired previous damage, repainting
- a brief visual or functional inspection of the equipment details if possible.
(Functional tests of driver assistance systems are not included in the scope of services!)
- a photo documentation of the vehicle

Basis for the order

This product is based on the Alphabet Fuhrpark GmbH guidelines for vehicle returns and valuations. The expert makes the explicit findings in each individual case objectively within the framework of the specified standards based on his or her own expertise.

The vehicle inspection takes place in a disassembled state.

Damage or defects that can only be detected during disassembly/diagnosis work or through advanced knowledge remain within the scope of the prognosis risk. An extended risk exists for concealed defects caused by fraudulent deception and not identifiable by the expert.

Damage or defects resulting from normal use or wear and tear of the vehicle will be accepted according to the applicable standard.

There was no explicit identification or monetary consideration of the expected features within the product.

Features which in their nature and severity slightly exceed normal use but do not constitute unacceptable damage will be documented and identified under signs of use if necessary.

Damage or defects which, according to the underlying standard, can no longer be attributed to normal use or wear and tear are listed in the product under "Depreciating Factors".

Depending on the product specification, a monetary ID can be provided. If this takes place, the costs can be 100% d or pro rata depending on the vehicle's age and mileage.

Previous damages

According to available information previous damages were repaired at the vehicle. Traces of repairs, which allow conclusions about the area of repair, were not recognizable during the inspection.



Figure 1: Diagonal front (left)



Figure 2: Diagonal front (right)



Figure 3: Diagonal rear (left)



Figure 4: Diagonal rear (right)



Figure 5: Interior - front

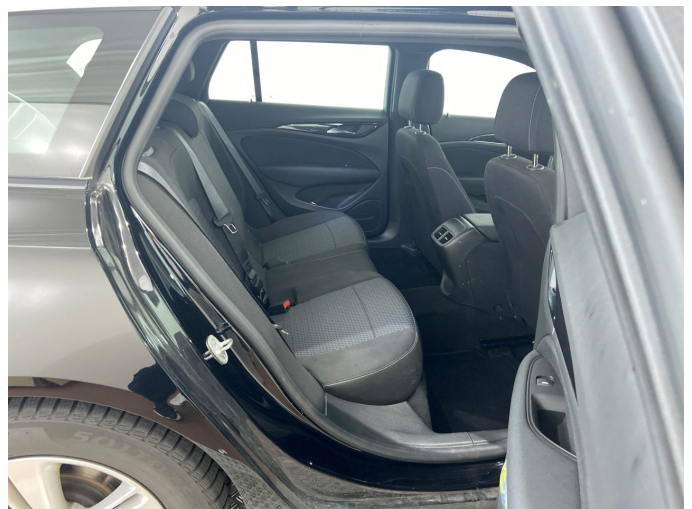


Figure 6: Interior - rear



Figure 7: Instrument cluster



Figure 8: Instrument panel



Figure 9: interior 360° view

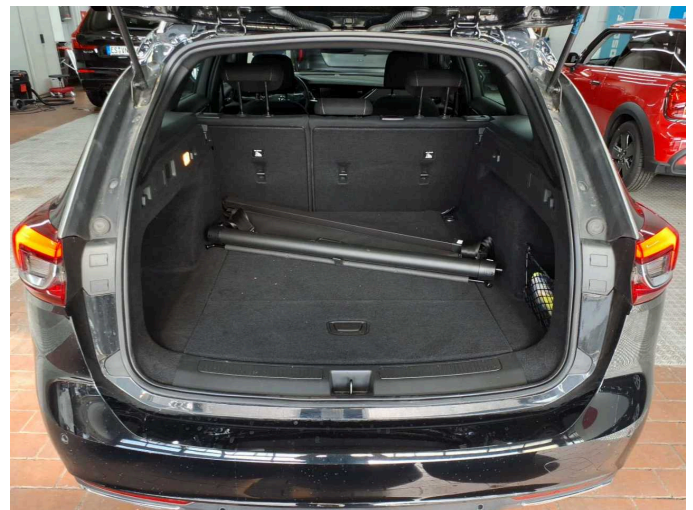


Figure 10: Cargo area

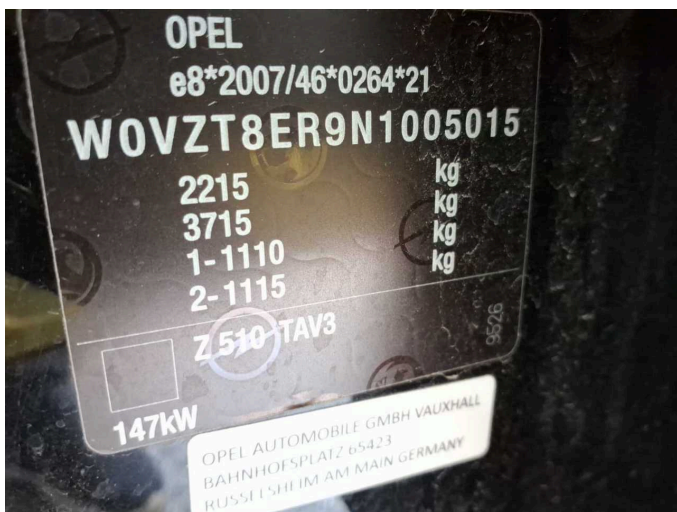


Figure 11: VIN



Figure 12: Mounted tyres



Figure 13: Documents

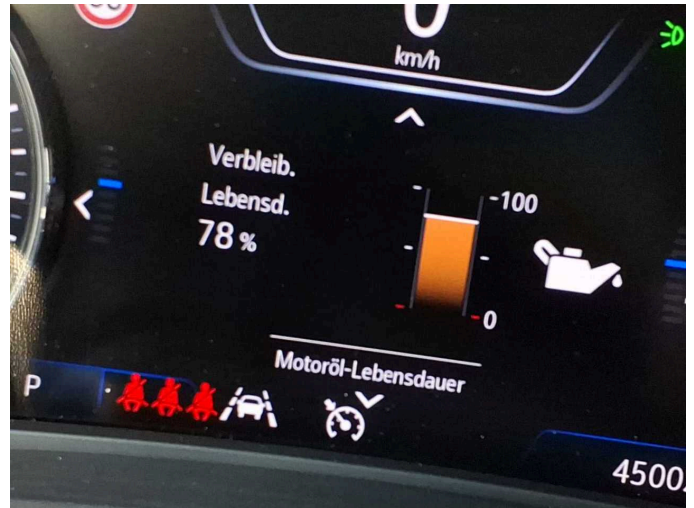


Figure 14: Documents



Figure 15: Additional tyres



Figure 16: Navigation



Figure 17: Misc.



Figure 18: Misc.



Figure 19: Misc.



Figure 20: Misc.



Figure 21: Misc.



Figure 22: Misc.



Figure 23: Misc.

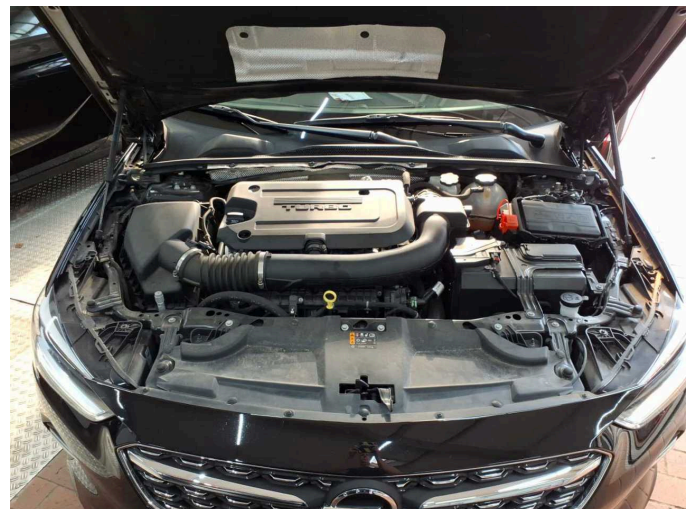


Figure 24: Misc.

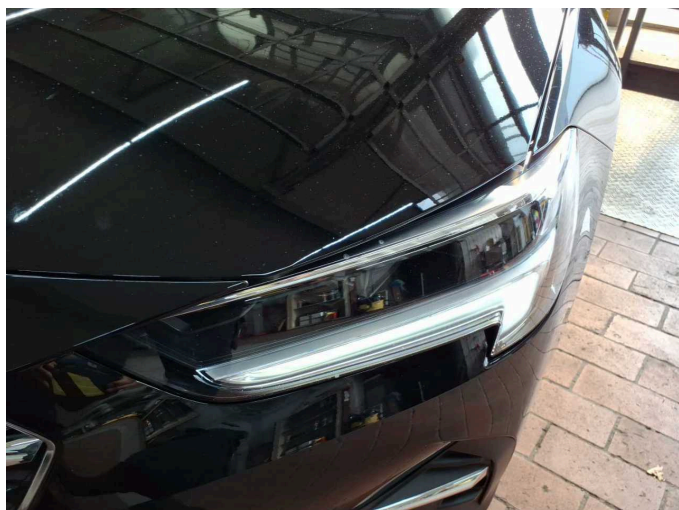


Figure 25: Misc.



Figure 26: Misc.

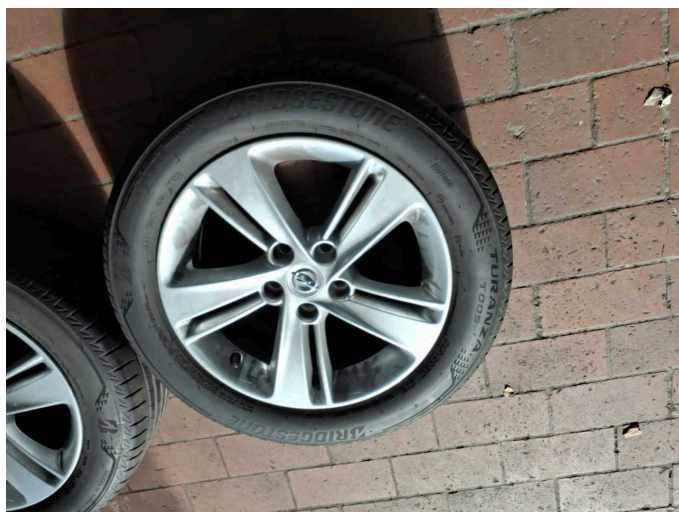


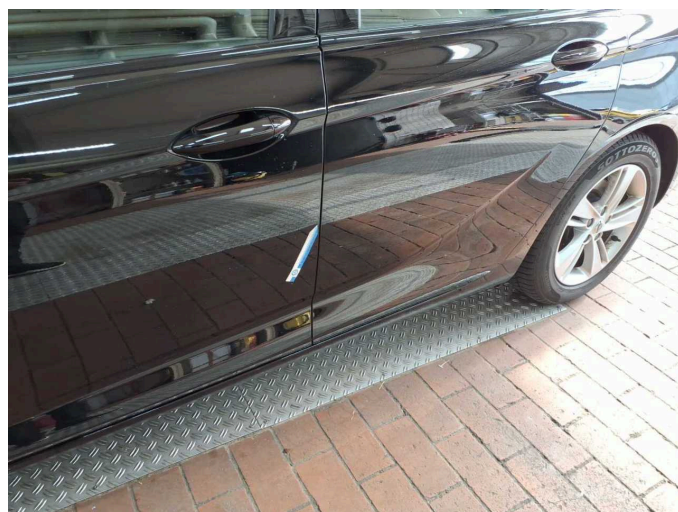
Figure 27: Misc.



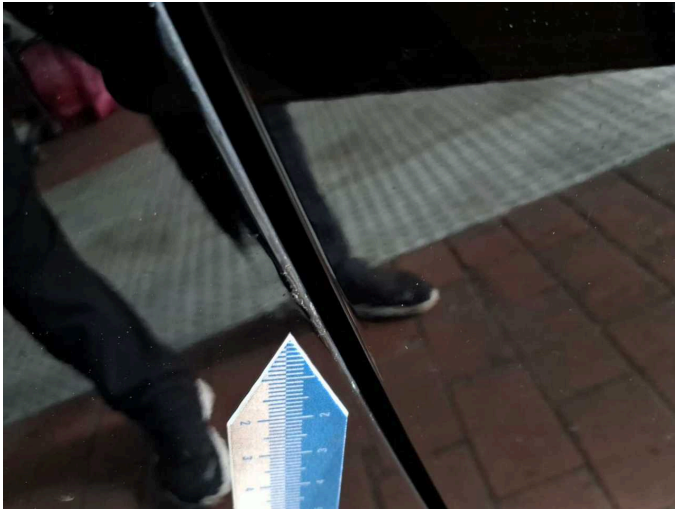
Figure 28: Misc.



Figure 29: Misc.



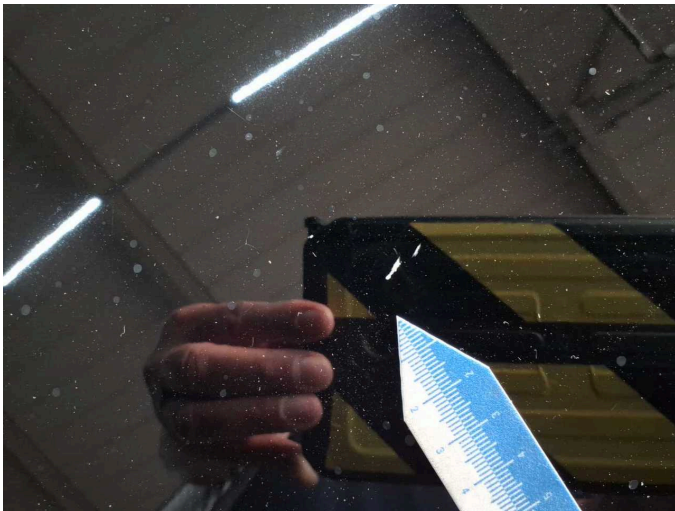
Damage 1: Door - front left side: Door (Lackstift nachgebessert) - Scratch(es) - Smart repair



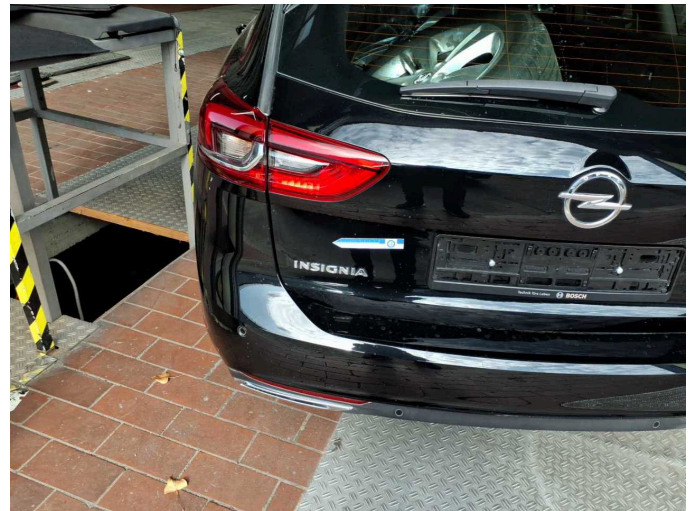
Damage 1: Door - front left side: Door (Lackstift nachgebessert) - Scratch(es) - Smart repair



Damage 2: Bonnet: Bonnet - Scratched - Paint



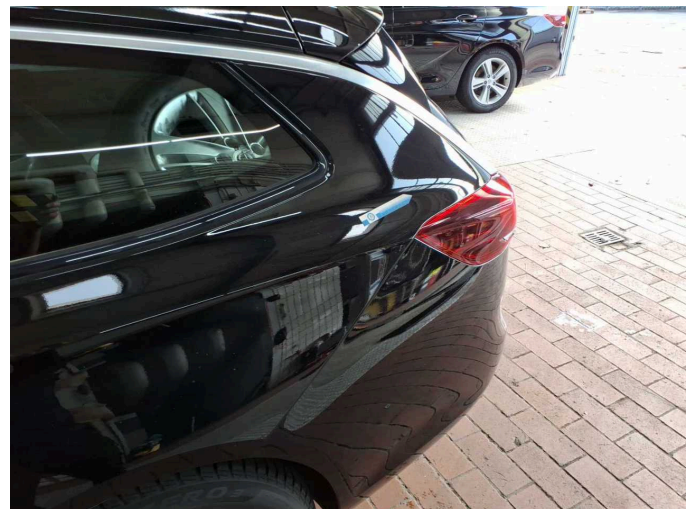
Damage 2: Bonnet: Bonnet - Scratched - Paint



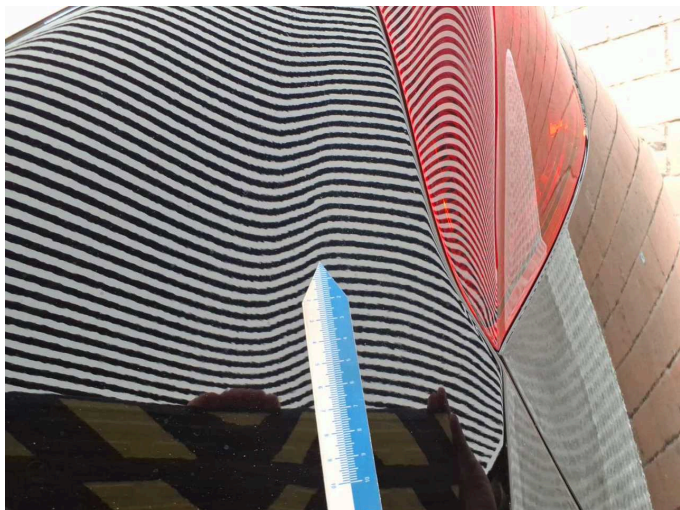
Wear and tear 2: Boot lid / rear door: Boot lid - dent(s) - No deduction



Wear and tear 2: Boot lid / rear door: Boot lid - dent(s) - No deduction



Wear and tear 3: Side panel - rear left side: Side panel - dent(s) - No deduction



Wear and tear 3: Side panel - rear left side: Side panel - dent(s) - No deduction



Wartungshistorie

(gemäß Auftraggeber Informationen)

Fahrgestellnummer: W0VZT8ER9N1005015

Hersteller / Modell: OPEL OPEL Insignia Sports Tourer 2.0 Direct InjectionTurbo
Elegance

Datum	KM-Stand	Beschreibung
21.02.2025	31.347	Systemtest/Eigendiagnose
17.05.2024	10.476	Bremsflüssigkeit; Bremsflüssigkeit ern; Motoröl b. Wartung; Ölfilter ern; Regelwartungsdienst; Wartung Sonstiges