



Expertise

Protocol number: 41504190
Order No. / Reference: 25197855
Inspection date: 1 Sept 2025

Manufacturer: Opel	Model: Insignia Sports Tourer 2.0 Diesel Aut. Business
VIN: W0VZT8EPXN1009363	



Vehicle details	
Manufacturer / Type / Model / Equipment	
Opel Insignia Sports Tourer 2.0 Diesel Aut. Business	
Vehicle Identification number	W0VZT8EPXN1009363
Mileage (Read)	158,585 km
First registration	28 Apr 2022
Number of holders	1
Next periodical technical inspection	04/2027
(Report on hand)	
Power / Engine displacement	128 kw / 1,955 ccm
Fuel type / Cylinder	Diesel / 4
Gearbox / Number of gears	Automatic / 8
Type of drive	Front drive
Type of vehicle	Station wagon
Colour / colour code	Jade Weiß
Doors / Seats	5 / 5
Upholstery type	Cloth / leather combination
Colour of upholstery	Black-Anthracite
Vehicle with smoke odor	Yes (ozone treated)



Vehicle details

Maintenance booklet / proof	digital proof / complete	Next maintenance in	86 %
Last maintenance on / at	07/2025 at 155,172 km		
Key is / should be	2 / 2	FZG documents	ZB#1 (S) was available (copy), ZB#2 (B) was not available
		Letter No.	GJ660506
Previous damage / Accident	Detectable	Repainting	Detectable
Inspection conditions	sufficient	Lifting equipment / pit	yes
Test drive	short drive on the company premises	Engine function test	Performed
Manufacturer key number/ type code number	1844 / AMC 00266		
Emission standard	EURO6;WLTP;AP;PI/CI; M, N1 I	Fine dust sticker	
Permitted total weight	2,215 kg	Empty weight	

Tyres

Mounted tyres

#	Tyre size	Type of tyre	Manufacturer	Tread depth
1)	225/55 R17 101Y	Summer tyres on Light alloy	Dunlop	6mm / 6mm
2)	225/55 R17 101Y	Summer tyres on Light alloy	Pirelli	5mm / 5mm

Additional tyres

#	Tyre size	Type of tyre	Manufacturer	Tread depth
1)	225/55 R17 97H	Winter tyres on Light alloy	Dunlop	2mm / 2mm
2)	225/55 R17 97H	Winter tyres on Light alloy	Dunlop	5mm / 5mm

Replacement

Typ	Tyre size	Type of tyre	Manufacturer	Tread depth
	Tirefit	Expiration date 10/2026		

Legend: Tread depth information for tires on the left is in the first place, for tires on the right is in the second place on the axle in the direction of travel

Equipment

Equipment

- Volldigitales Kombiinstrument

Standard equipment

- Storage compartments (storage compartment in the center console, pockets in the front doors, suitable for 1.5-liter drinks bottles, pockets in the rear doors, suitable for 1-liter drinks bottles, cup holder in the center console, illuminated glove compartment)
- Anti-lock braking system (ABS) (with cornering brake control (CBC) and brake assist)
- Hill Start Assist
- Roof rails, silver anodized
- diesel particulate filter
- Electronic brake force distribution (EBD)
- Electric windows front and rear (with touch function and anti-pinch protection)
- Pedestrian protection including active bonnet
- Cruise control
- Transmission: 8-speed automatic transmission
- Rear window wiper
- Two-zone automatic climate control (with separate temperature control for driver and front passenger, including manual air recirculation, particle/activated carbon filter, automatic air distribution, sun position sensor, humidity sensor)
- LED daytime running lights including LED indicators, front and LED taillights
- Center armrest, front
- Electric parking brake (including 12-volt socket)
- Parking pilot, front and rear parking aid (with acoustic warning signal when parking forwards and backwards)
- Quickheat rapid heating system
- Radio: Digital radio reception DAB+
- Radio: Multimedia Navi Pro with 8" color touchscreen display (Multimedia Radio, voice control for audio, telephone, and navigation, navigation system with SD card storage, road maps for over 30 European countries, 2D and 3D map display, dynamic route guidance via map and/or arrow display and announcements, connected navigation services, predictive navigation, online map updates, real-time traffic information, 8" driver information display, 2 USB ports, steering wheel remote control, Apple CarPlay and Android Auto)
- Power steering (speed-dependent)
- Safety net (for installation behind the 1st or 2nd row of seats)
- Visibility equipment (rain sensor, front interior mirror, automatically dimming, automatic low beam with tunnel detection, high beam assistant)
- Start/Stop System (Reinforced starter, high-performance battery, brake energy recovery, switch to deactivate the start/stop function)
- Airbags: Front airbags (multi-stage) and side airbags, driver and front passenger (front and side airbags, front passenger, deactivatable)
- Airbag: Head airbag front and rear outside
- Ambient lighting (dashboard and doors (front))
- Exterior mirrors for driver and passenger side, electrically adjustable and heated (manually folding)
- Brake light, third
- Hexagon decorative strip
- tachometer
- Electronic Stabilization Program (ESP - Plus)
- Forward collision warning with pedestrian detection and automatic emergency braking
- Luggage compartment cover (extendable with convenient operation)
- Back window, heater
- Child safety lock in the rear doors, manual
- Front headrests (height adjustable)
- Headrests, rear (3 pieces) (height adjustable)
- Paint finish: Uni
- LED headlights (headlight range adjustment, automatic)
- LED fog lights
- Steering column height/length adjustable
- Make-up mirrors in both sun visors, illuminated
- Package: Winter 1 (AGR, Driver) (Seat heating, multi-stage, driver and front passenger - Heated leather steering wheel - Rear seat backrest foldable 60:40 - Ergonomic active seat (AGR), driver (length, height, and backrest angle manually adjustable, seat angle electrically adjustable, lumbar support electropneumatically adjustable in height and length, extendable thigh support manually adjustable, headrest height and angle adjustable) - Heated ThermoTec windshield)
- Tire repair kit (including tire sealant and 12-volt compressor (without jack))
- Tire pressure indicator (with tire pressure warning - direct system with automatic calibration after wheel change)
- Wheels: Light alloy wheels 7.5 J x 17 in 5 double-spoke design (tires 225/55 R 17)
- Rear seat backrest folds forward in a 60:40 ratio
- Seat belts: Three-point seat belts on all seats (belt force limiters and pretensioners on the front and outer rear seats - warning audible and illuminated warning lights for unfastened seat belts on all seats)



- Bumpers painted in body color
- Traction Control (TC) Plus (traction control with engine and brake intervention)
- Pre-installation for ISOFIX child seat mounting system (rear)
- Immobiliser
- Heat-insulating glazing, green tinted
- Central locking with radio remote control (and interior switches)
- Ignition key, second, foldable

- Lane Keeping Assist (Warning if the driver unintentionally drifts out of the lane (between 60 km/h and 180 km/h) via a warning light in the driver information display. Lane Keeping Assist also alerts the driver by gently countersteering, but does not steer the vehicle continuously.)
- Traffic Sign Assistant (recognition of speed limits, overtaking bans and their cancellation, additional information signs (e.g., in wet or slippery conditions, left/right directions) on standard traffic signs, start and end of motorways, dual carriageways, and traffic-calmed areas, display of the recognized sign in the driver information display (depending on traffic sign quality, visibility, and weather conditions).)

Extra equipment

- Swiveling trailer coupling (including trailer stability program)
- Package: Innovations 2 (automatic transmission) (Head-Up Display - Adaptive Cruise Control (3rd Generation), Stop & Go function - Forward Collision Warning with Pedestrian Detection and Automatic Emergency Braking, active from 4 km/h, range 150 m. If there is a risk of collision, the braking system is prepared and, if necessary, emergency braking / automatic emergency braking is initiated - Traffic Sign Assist)
- Panoramic glass sliding/tilting roof, electric (with pre-select function and spoiler position for the front section, incl. - anti-pinch protection - convenient closing function via radio remote control of the central locking system - sunblind, electrically operated - preparation for safety net attachment in the first row)
- Package: Business Premium (Easy-Access Package: Keyless locking and starting system, sensor-controlled tailgate, electric loading sill protection, stainless steel - Charging Package: Wireless charging, 2 USB ports, rear center console - Park & Go: Digital rear view camera, Reversing Assistant, Lane Change Assistant, Blind Spot Warning, in both exterior mirrors - Innovation Package 1: IntelliLux LED Pixel Light, Traffic Sign Assistant - Solar Protect heat-insulating glass, heavily tinted, in the rear)
- Package: Sound (Bose sound system)
- Upholstery: Monita fabric/premium leather look including Winter Package 2 (Ergonomic active seat, certified by the Campaign for Healthy Backs (AGR), driver and front passenger - multi-stage seat heating, driver and front passenger - heated leather steering wheel - heated ThermoTec windshield - Seat Comfort Features 1 - rear seat backrest with FlexFold function, foldable 40:20:40 - Charging Package)

Brief expert findings

Documents submitted	At the time of the inspection, the registration certificate Part 1 (certificate) was available, but the registration certificate Part 2 (letter) was not. (Copy)
VIN comparison	The vehicle identification number (VIN) was read from the vehicle and its conformity with the submitted documents was verified during the inspection by the undersigned.
Inspection	The inspection conditions were sufficient for the assessment of the vehicle. Lifting equipment and a pit were available for examining the vehicle.
Test drive	A short maneuvering and shunting trip was carried out on the company premises.
Engine function test	An engine test run was performed.

Value reducing factors

No.	Component group	Description
1	Wing mirror - right side	Cap - Scratch(es) - Smart repair
2	Side panel - rear right side	Sill - dent(s) - Smart repair
3	Body	Underbody panelling - Broken / torn - Replace
4	Seat - front	Seat cover - left side - Broken / torn - Loss in value
5	Trim / covers	Door trim - rear right side - Broken / torn - Replace

Wear and tear



No.	Component group	Description
1	2nd wheel set	2 tyres (Profiltiefe; Kein Teil der Ausstattung) - Does not meet the leasing specifications - No deduction
2	Mudguard - right side	Mudguard - right side - Stone chips - Cover / polish
3	Side panel - rear right side	Side panel - dent(s) - No deduction
4	Trim / covers	Floor mats - Holes - No deduction
5	Front bumper	Front bumper - Stone chips - Smart repair

The vehicle shows signs of wear commensurate with its age and use.

Previous damages

No.	Previous damage	Extent of damage (Net)
1	Front, Provided by user / customer, from 15 Nov 2023	3.301,10 €
2	Front, Side - left, Provided by user / customer, from 23 Oct 2023	6.513,53 €

Repainting

No.	Repainting
1	Mudguard - left side, Professionally carried out, Invoice of repair done Non-existent
2	Bonnet, Professionally carried out, Invoice of repair done Non-existent
3	Door - rear left side, Professionally carried out, Invoice of repair done Non-existent
4	Door - rear left side, Professionally carried out, Invoice of repair done Non-existent
5	Door - front left side, Professionally carried out, Invoice of repair done Non-existent

Paint coat thickness measurement

Mudguard - left side	727 µm	Bonnet	302 µm
Side panel - rear left side	175 µm	Door - rear left side	336 µm
Door - front left side	223 µm		

Order/Scope of order

The order was placed to prepare a sales report for the vehicle described. This includes the following:

- Description of core relevant information about the vehicle
- Documentation of equipment features
(Delivery by third-party service providers)
- Documentation of damage, defects, missing parts
- Documentation of previous damage, unrepaired previous damage, repainting
- a brief visual or functional inspection of the equipment details if possible.
(Functional tests of driver assistance systems are not included in the scope of services!)
- a photo documentation of the vehicle



Basis for the order

This product is based on the Alphabet Fuhrpark GmbH guidelines for vehicle returns and valuations. The expert makes the explicit findings in each individual case objectively within the framework of the specified standards based on his or her own expertise.

The vehicle inspection takes place in a disassembled state.

Damage or defects that can only be detected during disassembly/diagnosis work or through advanced knowledge remain within the scope of the prognosis risk. An extended risk exists for concealed defects caused by fraudulent deception and not identifiable by the expert.

Damage or defects resulting from normal use or wear and tear of the vehicle will be accepted according to the applicable standard.

There was no explicit identification or monetary consideration of the expected features within the product.

Features which in their nature and severity slightly exceed normal use but do not constitute unacceptable damage will be documented and identified under signs of use if necessary.

Damage or defects which, according to the underlying standard, can no longer be attributed to normal use or wear and tear are listed in the product under "Depreciating Factors".

Depending on the product specification, a monetary ID can be provided. If this takes place, the costs can be 100% d or pro rata depending on the vehicle's age and mileage.

Previous damages

According to available information previous damages were repaired at the vehicle. Traces of repairs, which allow conclusions about the area of repair, were not recognizable during the inspection.

Comments

- Winterradsatz ist kein Bestandteil des Auslieferungsumfangs.



Figure 1: Diagonal front (left)



Figure 2: Diagonal front (right)



Figure 3: Diagonal rear (left)



Figure 4: Diagonal rear (right)



Figure 5: Interior - front



Figure 6: Interior - rear



Figure 7: Instrument cluster



Figure 8: Instrument panel



Figure 9: Interior 360° view



Figure 10: Cargo area



Figure 11: VIN



Figure 12: Mounted tyres



Figure 13: Documents



Figure 14: Documents



Figure 15: Documents



Figure 16: Documents



Figure 17: Additional tyres

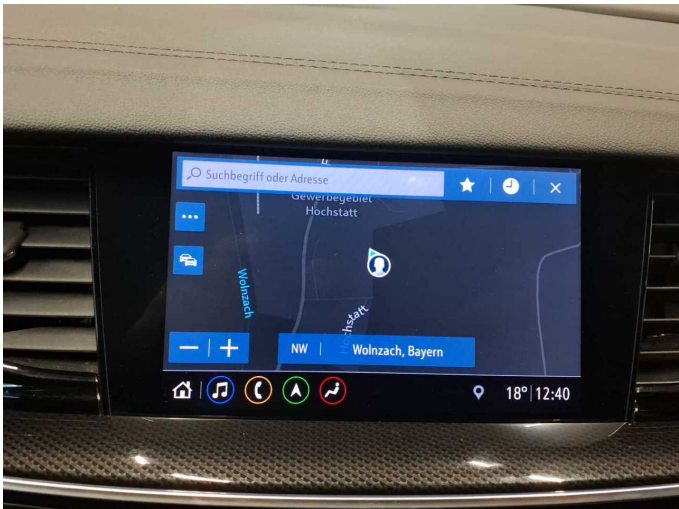


Figure 18: Navigation

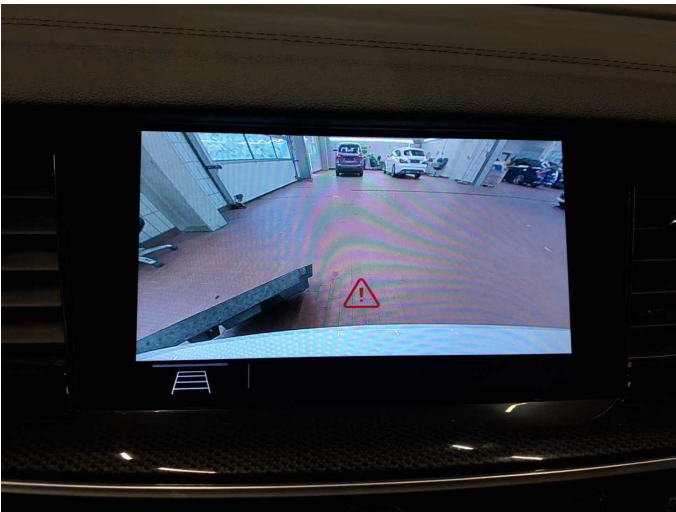


Figure 19: Misc.



Figure 20: Misc.



Figure 21: Misc.



Figure 22: Misc.

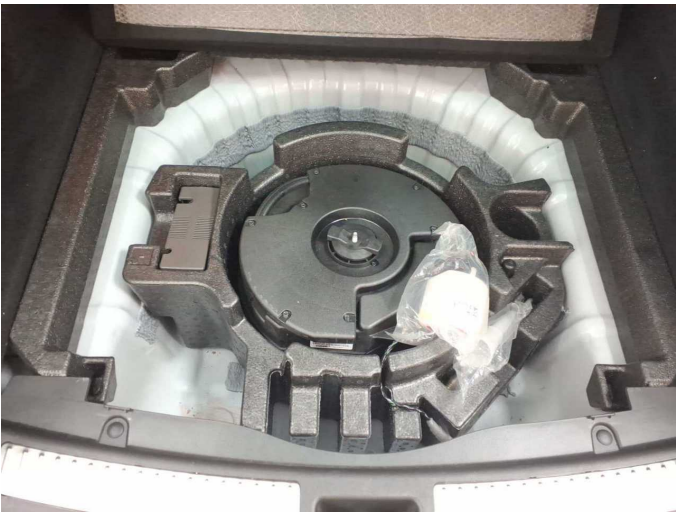


Figure 23: Misc.



Figure 24: Misc.



Figure 25: Misc.



Figure 26: Misc.



Figure 27: Misc.

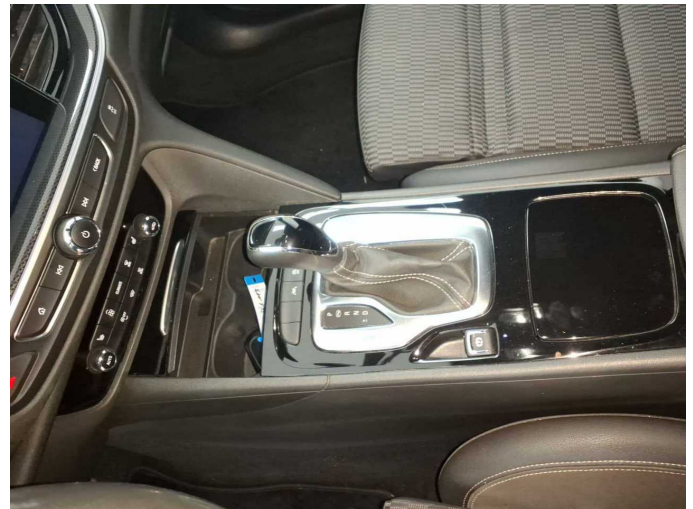


Figure 28: Misc.



Figure 29: Misc.



Figure 30: Misc.



Figure 31: Misc.



Figure 32: Misc.



Figure 33: Misc.



Damage 1: Wing mirror - right side: Cap - Scratch(es) - Smart repair



Damage 1: Wing mirror - right side: Cap - Scratch(es) - Smart repair



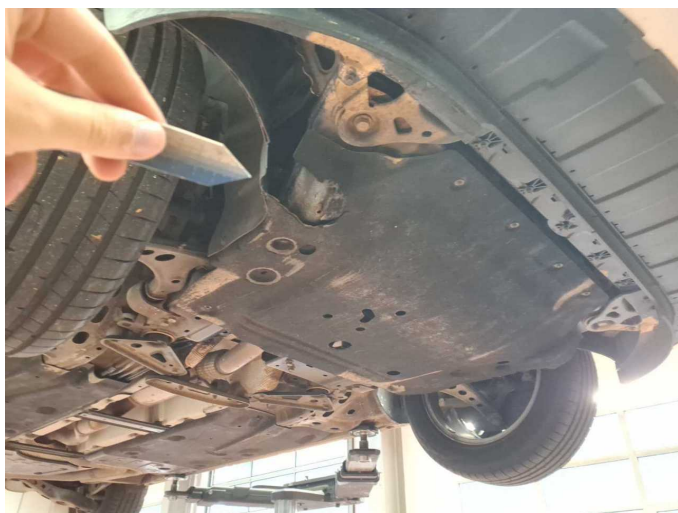
Damage 2: Side panel - rear right side: Sill - dent(s) - Smart repair



Damage 2: Side panel - rear right side: Sill - dent(s) - Smart repair



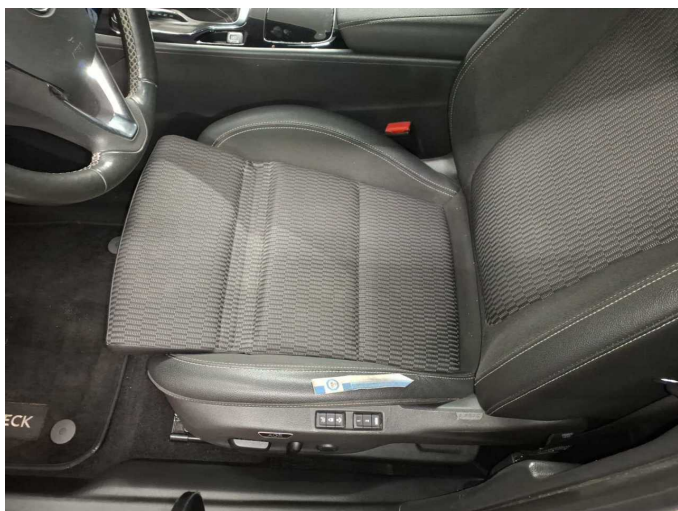
Damage 2: Side panel - rear right side: Sill - dent(s) - Smart repair



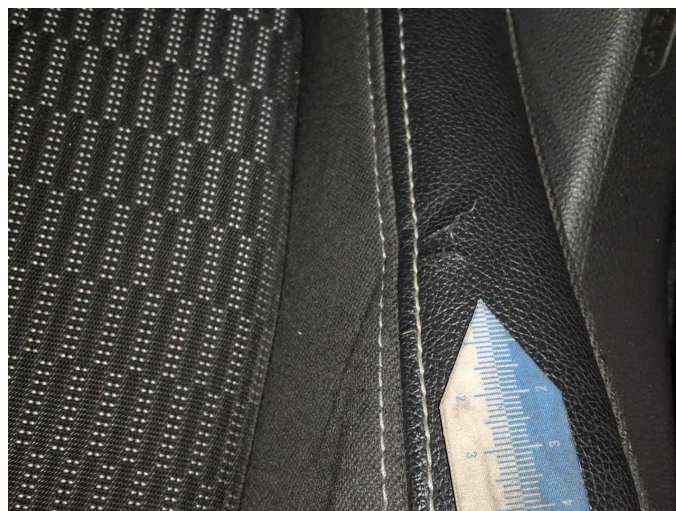
Damage 3: Body: Underbody panelling - Broken / torn - Replace



Damage 3: Body: Underbody panelling - Broken / torn - Replace



Damage 4: Seat - front: Seat cover - left side - Broken / torn - Loss in value



Damage 4: Seat - front: Seat cover - left side - Broken / torn - Loss in value



Damage 5: Trim / covers: Door trim - rear right side - Broken / torn - Replace



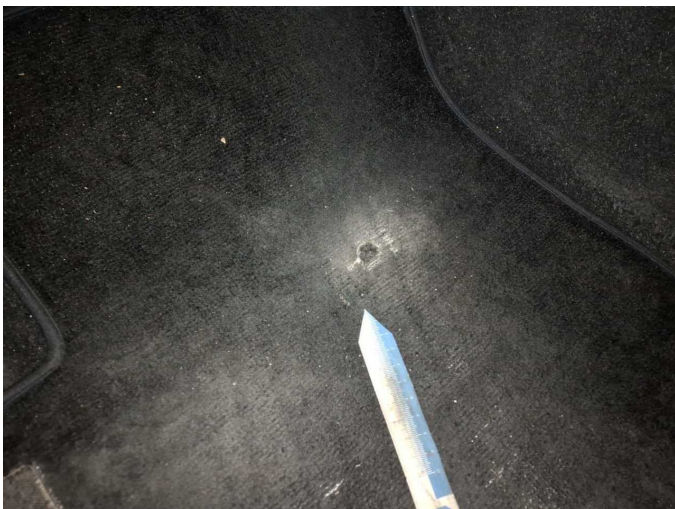
Damage 5: Trim / covers: Door trim - rear right side - Broken / torn - Replace



Damage 5: Trim / covers: Door trim - rear right side - Broken / torn - Replace



Damage 5: Trim / covers: Door trim - rear right side - Broken / torn - Replace



Wear and tear 4: Trim / covers: Floor mats - Holes - No deduction



Wear and tear 4: Trim / covers: Floor mats - Holes - No deduction



Wear and tear 5: Front bumper: Front bumper - Stone chips - Smart repair



Wear and tear 5: Front bumper: Front bumper - Stone chips - Smart repair



Repainting 1: Mudguard - left side



Repainting 2: Bonnet



Repainting 3: Door - rear left side



Repainting 4: Door - rear left side



Repainting 5: Door - front left side



Wartungshistorie

(gemäß Auftraggeber Informationen)

Fahrgestellnummer: W0VZT8EPXN1009363

Hersteller / Modell: OPEL OPEL Insignia Sports Tourer 2.0 Diesel Aut. Business

Datum	KM-Stand	Beschreibung
24.07.2025	155.172	Keilrippenriemen; Motoröl b. Wartung; Ölfilter ern; Regelwartungsdienst; Wartung Sonstiges
10.04.2025	140.892	AU
19.03.2025	136.266	Bremsscheiben + Klötze h; Bremsscheiben + Klötze v; Bremsscheiben hinten; Bremsscheiben vorne
20.11.2024	121.483	Kraftstofffilter ern; Motoröl b. Wartung; Ölfilter ern; Regelwartungsdienst; Wartung Sonstiges
28.03.2024	91.810	Bremsflüssigkeit; Bremsflüssigkeit ern; Motoröl b. Wartung; Ölfilter ern; Regelwartungsdienst; Wartung Sonstiges
04.08.2023	60.999	Bremsinspektion vo + hi; Bremsklötze hinten; Bremsscheiben + Klötze v; Bremsscheiben vorne; Kraftstofffilter ern; Luftfiltereinsatz ern; Motoröl b. Wartung; Ölfilter ern; Regelwartungsdienst; Wartung Sonstiges
14.12.2022	31.002	Motoröl b. Wartung; Ölfilter ern; Regelwartungsdienst; Wartung Sonstiges