



OPEL Insignia

Insignia Sports Tourer 2.0 Diesel

VIN NO W0VZT8EPXM1022080
Registration Number PXM1022080



MOT Date	Number of Owners	Number of Keys	Odometer Reading
-	1	2	56104 km
Last Service	Last Service Mileage	First Registration Date	Country First Registered
2024-09-13	39750	2021-09-08	Germany

Inspection Report Summary

Customer	BCA Online	Report Number	P20250924133312
Inspection Date / Place	2025-09-24 / BCA Berlin	Cosmetic Grade	2

Vehicle Summary

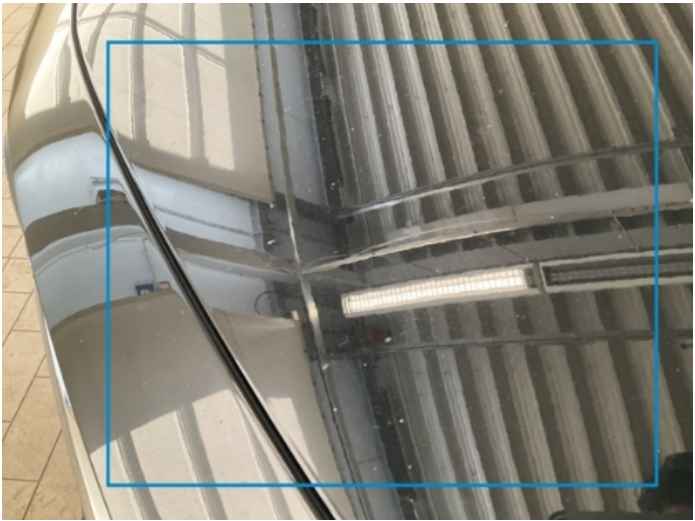
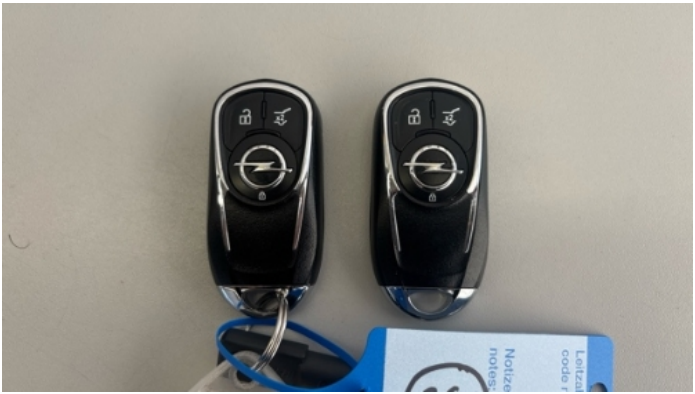
Vehicle Condition	Runner	VAT Type	Qualifying
Fuel Type	Diesel	Road Worthy	Yes
Colour	Black	Engine Size (cc)	1955
Engine Size	2.0	No of Doors	5
Body Type	Stationwagon / Estate	Drive Train	Front
Seat Colour		No of Seats	5
Seat Covering Name	schwarz	Seat Covering	Cloth/Synthetic Leather
Charging Cables		WLTP CO2 Emissions	
Gearbox Type	Manual		

Vehicle History & Documents

Service Book Available	Present	Next Service Mileage	km
Previous Usage		Imported	No
Manufacturer Warrenty			







Equipment

USB Socket	Alloys wheels	Anti-lock braking	Cruise control
Digitaldashboard	Front parking sensors	Parking Assistance	Reversing Camera
Satellite navigation	Stability control	Electrically folding wing mirrors	Leather steering wheel
Radio	Airbag Status	Ambientlighting	Bluetooth telephone interface
Digital Radio	Enhanced speaker system	Head up Display	Remote adjusting wing mirrors
Roof rails	Split folding rear seats	Central locking	Electrictailgate
LED Headlamps	Rear parking sensors		

Equipment Details

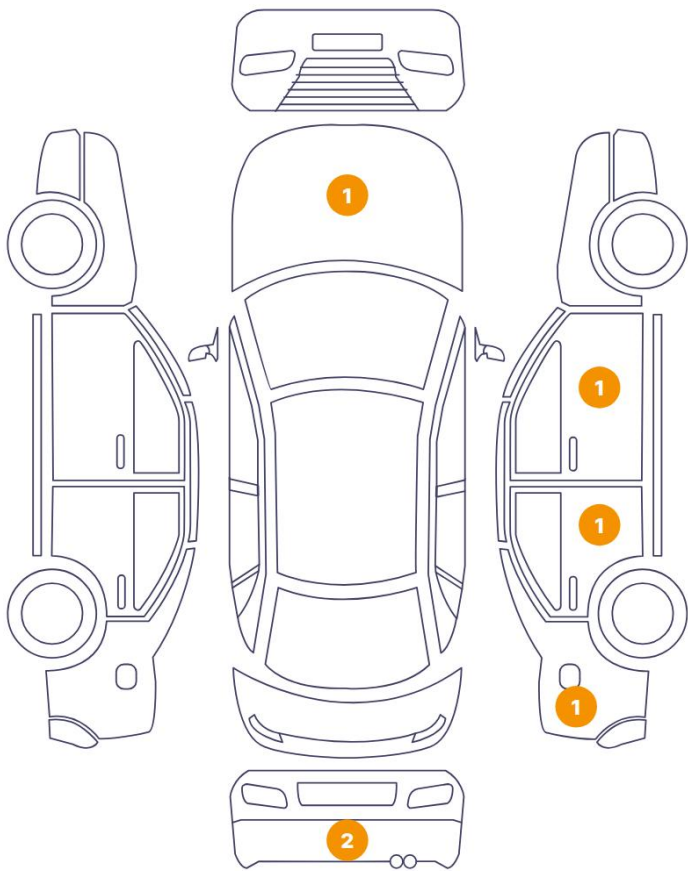
Air Conditioning	Climate Control	Alloy Wheel Size	17
Seat Heating	Front		

Wheels & Tyres

Right Front Tyre Depth	5	Left Front Tyre Depth	5
Right Rear Tyre Depth	5	Left Rear Tyre Depth	5

Cosmetic Damage

6 Schäden



0 Schäden



Component		Damage	Comments
1	Bumper / Back	Paint / Scratch / Scuff	
2	Bumper / Back	Paint / Scratch / Scuff	
3	Fender / Back Right	Paint / Poor Previous Repair	
4	Door / Back Right	Paint / Poor Previous Repair	
5	Door / Front Right	Paint / Poor Previous Repair	
6	Hood	Paint / Stone Chip	



1. Bumper / Back
Paint / Scratch / Scuff -



2. Bumper / Back
Paint / Scratch / Scuff -



3. Fender / Back Right
Paint / Poor Previous Repair -



4. Door / Back Right
Paint / Poor Previous Repair -



5. Door / Front Right
Paint / Poor Previous Repair -



6. Hood
Paint / Stone Chip -

Mechanical Condition

Engine

Engine Starts	✓	Engine Status / EML	✓
Engine Leak Visible	✓		

Equipments Test

Central Locking	✓	Electric Windows	✓
Navigation System	NA	Audio Equipment	✓
AC / Heating System	✓	Parking Sensors / Cameras Functioning	✓

Control Lights

ABS Warning Light	✓	ESP Fault/Traction Control Malfunction Light	✓
Airbag Warning Light	✓	Oil Pressure Warning Light	✓
Brake Warning Light	✓	Power Steering Warning Light	✓
Alternator / Battery	✓	All - wheel Drive	✓
No Dashboard Lights	✓	Display Defect	✓
Service Light	✓	Tire Pressure Monitoring System	✓

Gearbox

Gear Box	✓
----------	---

Levels

Brakes Fluid	✓	Coolant Fluid	✓
--------------	---	---------------	---

Test Drive Inspection

Steering Wheel

Steering | Noise / Anomaly

Engine

Engine Noise The Gears Scratch / Skip / Abnormal Operation

Fume Quantity Power Loss

Brake

Brake System Anomaly

Clutch

Clutch Functioning

General

Test Driven Status

- No troubles detected, good condition or correct tests, according to vehicle age and mileage
- Damages or malfunction detected that requires repairs by the buyer
- Not applicable
- Not tested

Disclaimer

Please also note the "UserGuide condition report", which shows the scope of the vehicle description. [User Guide](#)