



Expertise

Protocol number: 41567087  
Order No. / Reference: 25201691  
Inspection date: 15 Sept 2025

Manufacturer: Opel

Model: Insignia Grand Sport 2.0 Diesel Automatik Business

VIN: W0VZT6EP8N1030927



Vehicle details	
Manufacturer / Type / Model / Equipment	
Opel Insignia Grand Sport 2.0 Diesel Automatik Business	
Vehicle Identification number	W0VZT6EP8N1030927
Mileage (Read)	99,789 km
First registration	19 Dec 2022
Number of holders	1
Power / Engine displacement	128 kw / 1,995 ccm
Fuel type / Cylinder	Diesel / 4
Gearbox / Number of gears	Automatic / 8
Type of drive	Front drive
Type of vehicle	Saloon car
Colour / colour code	Jade Weiß
Doors / Seats	5 / 5
Upholstery type	Cloth
Colour of upholstery	Anthracite-Grey
Driving readiness	Roadworthy



## Vehicle details

<b>Maintenance booklet / proof</b>	digital proof / complete	<b>Next maintenance in</b>	27,000 km
<b>Last maintenance on / at</b>	07/2025 at 96,988 km		
<b>Key is / should be</b>	2 / 2	<b>FZG documents</b>	ZB#2 (B) was available (copy), ZB#1 (S) was not available
		<b>Letter No.</b>	GQ314471
<b>Previous damage / Accident</b>	None detectable	<b>Repainting</b>	None detectable
<b>Inspection conditions</b>	sufficient	<b>Lifting equipment / pit</b>	yes
<b>Test drive</b>	Not performed	<b>Engine function test</b>	Performed
<b>Driving readiness</b>	Roadworthy		
<b>Manufacturer key number/ type code number</b>	1844 / AMB 00314		
<b>Emission standard</b>	EURO6;WLTP;AP;PI/CI; M, N1 I	<b>Fine dust sticker</b>	
<b>Permitted total weight</b>	2,200 kg	<b>Empty weight</b>	

## Tyres

### Mounted tyres

#	Tyre size	Type of tyre	Manufacturer	Tread depth
1)	245/45 R18 100Y	Summer tyres on Light alloy	Bridgestone	4mm / 4mm
2)	245/45 R18 100Y	Summer tyres on Light alloy	Bridgestone	5mm / 5mm

### Additional tyres

#	Tyre size	Type of tyre	Manufacturer	Tread depth
1)	225/55 R17 101V	Winter tyres on Light alloy	Bridgestone	2mm / 2mm
2)	225/55 R17 101V	Winter tyres on Light alloy	Bridgestone	7mm / 7mm

### Replacement

Typ	Tyre size	Type of tyre	Manufacturer	Tread depth
	Tirefit	Expiration date 04/2027		

**Legend:** Tread depth information for tires on the left is in the first place, for tires on the right is in the second place on the axle in the direction of travel

## Equipment

### Standard equipment

- Storage compartments
- Airbag: front airbags and side airbags, driver and front passenger
- Anti-lock braking system (ABS)
- Hill Start Assist
- Brake light, third
- Hexagon decorative strip
- tachometer
- Electronic Stabilization Program (ESP - Plus)
- Forward collision warning with pedestrian detection and automatic emergency braking
- Cruise control
- Back window, heater
- Automatic climate control two zones
- Headrests, rear (3 pieces)
- LED headlights
- LED daytime running lights including LED indicators, front and LED taillights
- Center armrest, front
- Parking brake, electric
- Upholstery: Billy fabric, black
- Radio: Digital radio reception DAB+
- Tire repair kit
- Tire pressure display
- Power steering
- safety net
- Seats: Ergonomic active seat, (AGR) driver
- Start/Stop system
- Traction Control (TC) Plus
- Pre-installation for ISOFIX child seat retention system
- Heat-insulating glazing, green tinted
- Adaptive brake light
- Airbag: Head airbag front and rear outside
- Ambient lighting
- Exterior mirrors for driver and passenger side electrically adjustable and heated
- Glasses compartment in the roof lining
- diesel particulate filter
- Electronic brake force distribution (EBD)
- Electric windows front and rear
- Pedestrian protection including active bonnet
- Noise-reducing, laminated front side windows
- Transmission: 8-speed automatic transmission
- Child safety lock in the rear doors, manual
- Front headrests
- Paint finish: Uni
- LED fog lights
- Steering column height/length adjustable
- Make-up mirrors in both sun visors, illuminated
- Package: Winter 1
- Parking pilot, front and rear parking aid
- Quickheat rapid heating system
- Radio: Multimedia Navi Pro with 8" touchscreen color display
- Rear seat backrest folds forward in a 60:40 ratio
- Seat belts: Three-point seat belts on all seats
- Visual equipment
- Lane Keeping Assist
- Bumpers painted in body color
- Traffic Sign Assistant
- Immobiliser
- Central locking with radio remote control

### Extra equipment

- Anti-theft alarm system (burglar alarm - deterrent signal - ultrasonic interior monitoring - tilt monitoring - monitoring of trunk, doors, front hatch, rear window (on Sports Tourer) and rims - horn and tow-away protection - mechanical door locking)
- Package: Innovations 2 (automatic transmission) (Head-Up Display - Adaptive Cruise Control (3rd Generation), Stop & Go function - Forward Collision Warning with Pedestrian Detection and Automatic Emergency Braking, active from 4 km/h, range 150 m. If there is a risk of collision, the braking system is prepared and, if necessary, emergency braking / automatic emergency braking is initiated - Traffic Sign Assist)
- Electric sliding/tilting glass roof
- GS Line interior equipment (GS Line sport leather steering wheel, heated - aluminum - sport pedals - headliner in black)
- Package: Business Premium (Easy-Access Package: Keyless locking and starting system, sensor-controlled tailgate, electric loading sill protection, stainless steel - Charging Package: Wireless charging, 2 USB ports, rear center console - Park & Go: Digital rear view camera, Reversing Assistant, Lane Change Assistant, Blind Spot Warning, in both exterior mirrors - Innovation Package 1: IntelliLux LED Pixel Light, Traffic Sign Assistant - Solar Protect heat-insulating glass, heavily tinted, in the rear)
- Wheels: Light alloy wheels 8.5 J x 18 in high-gloss black (multi-spoke) (with tires 245/45 R 18)
- Wheels: Additional set of winter wheels 17"LM



- Upholstery: Monita fabric/premium leather look including Winter Package 2 (ergonomic active seat, certified by the Campaign for Healthy Backs (AGR), F./B. multi-stage seat heating, F./B. heated leather steering wheel, heated ThermoTec windshield, Seat comfort equipment 1: 8-seater driver's seat, electrically adjustable, lumbar support, electronically adjustable, memory function - driver and outside mirror, massage function, F., exterior mirrors electrically adjustable, heated, including rear seat backrest with FlexFold function, folds forward in a 40:20:40 ratio, charging package: wireless charging, 2 USB ports).

### Brief expert findings

Documents submitted	At the time of the inspection, the registration certificate Part 2 (letter) was available, but the registration certificate Part 1 (certificate) was not. (Copy)
VIN comparison	The vehicle identification number (VIN) was read from the vehicle and its conformity with the submitted documents was verified during the inspection by the undersigned.
Inspection	The inspection conditions were sufficient for the assessment of the vehicle. Lifting equipment and a pit were available for examining the vehicle.
Test drive	No test drive/maneuvering was carried out during the inspection of the vehicle.
Engine function test	An engine test run was performed.
Driving readiness	The vehicle was drivable at the time of inspection.

### Value reducing factors

No.	Component group	Description
1	Instrument panel	Indicator light (AdBlue) - on - Replace
2	Rear bumper	Rear bumper - Scratch(es) - Smart repair
3	Wheel / tyres	Alloy rim - rear right side - Scratch(es) - Smart repair
4	2nd wheel set	2 tyres - Does not meet the leasing specifications - Replace
5	Wheel / tyres	Alloy rim - front right side - Scratch(es) - Replace
6	Front bumper	Front bumper - Scratch(es) - Paint

### Order/Scope of order

The order was placed to prepare a sales report for the vehicle described. This includes the following:

- Description of core relevant information about the vehicle
- Documentation of equipment features  
(Delivery by third-party service providers)
- Documentation of damage, defects, missing parts
- Documentation of previous damage, unrepaired previous damage, repainting
- a brief visual or functional inspection of the equipment details if possible.  
(Functional tests of driver assistance systems are not included in the scope of services!)
- a photo documentation of the vehicle



## Basis for the order

This product is based on the Alphabet Fuhrpark GmbH guidelines for vehicle returns and valuations. The expert makes the explicit findings in each individual case objectively within the framework of the specified standards based on his or her own expertise.

The vehicle inspection takes place in a disassembled state.

Damage or defects that can only be detected during disassembly/diagnosis work or through advanced knowledge remain within the scope of the prognosis risk. An extended risk exists for concealed defects caused by fraudulent deception and not identifiable by the expert.

Damage or defects resulting from normal use or wear and tear of the vehicle will be accepted according to the applicable standard.

There was no explicit identification or monetary consideration of the expected features within the product.

Features which in their nature and severity slightly exceed normal use but do not constitute unacceptable damage will be documented and identified under signs of use if necessary.

Damage or defects which, according to the underlying standard, can no longer be attributed to normal use or wear and tear are listed in the product under "Depreciating Factors".

Depending on the product specification, a monetary ID can be provided. If this takes place, the costs can be 100% d or pro rata depending on the vehicle's age and mileage.

## Previous damages

Apparently, no repaired previous damage could be found on the vehicle.





**Figure 1:** Diagonal front (left)



**Figure 2:** Diagonal front (right)



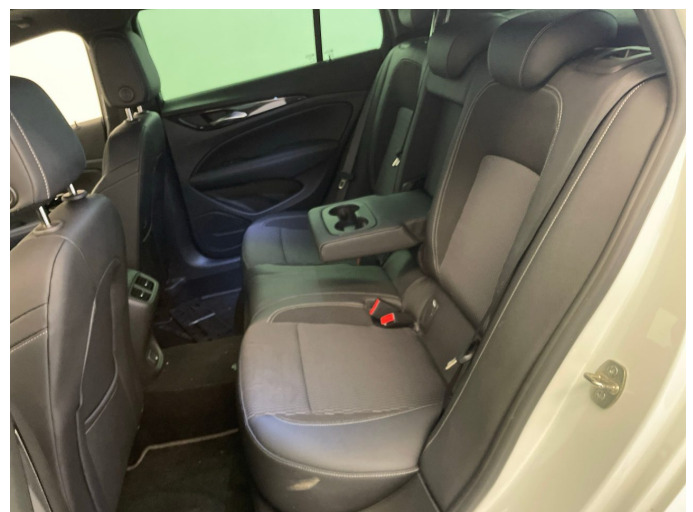
**Figure 3:** Diagonal rear (left)



**Figure 4:** Diagonal rear (right)



**Figure 5:** Interior - front



**Figure 6:** Interior - rear





Figure 7: Instrument cluster



Figure 8: Instrument panel



Figure 9: Interior 360° view



Figure 10: Cargo area

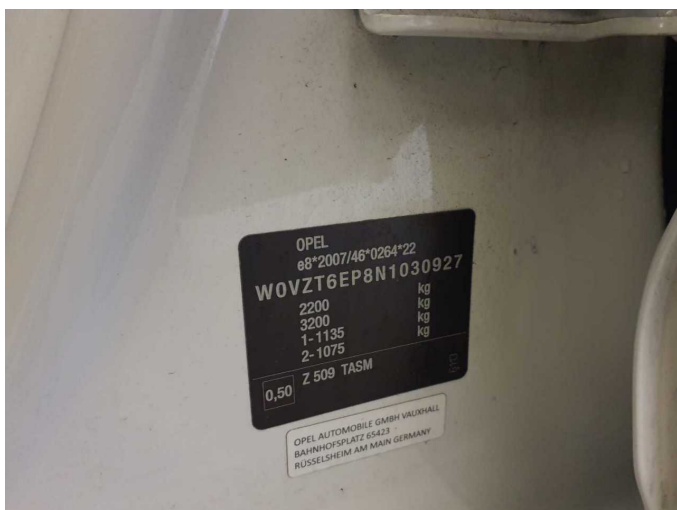


Figure 11: VIN



Figure 12: Mounted tyres

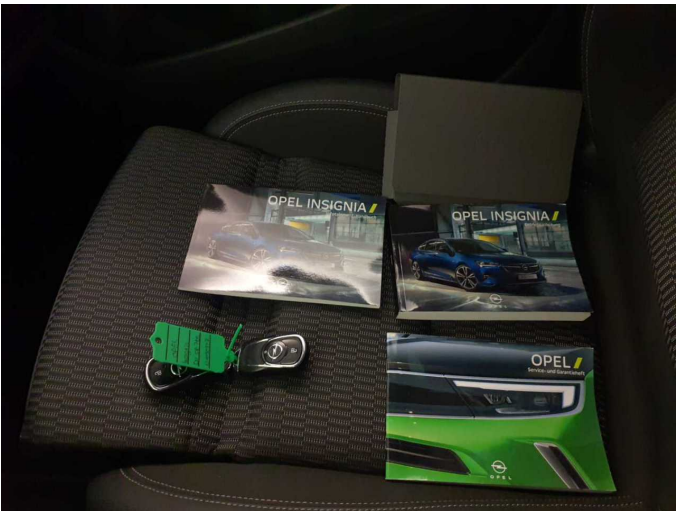


Figure 13: Documents

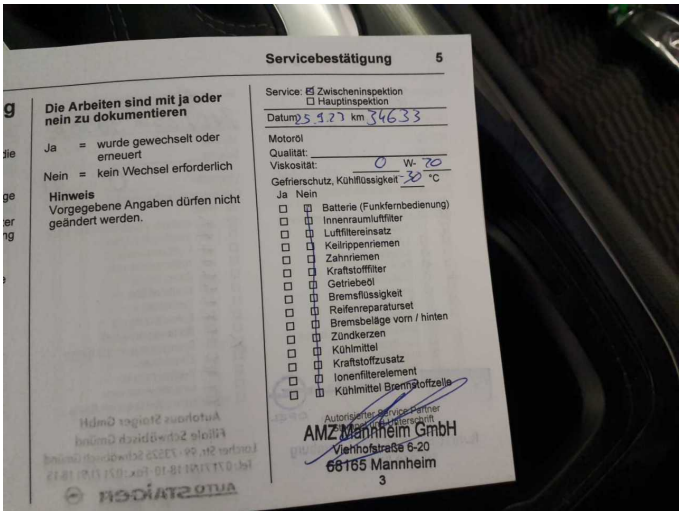


Figure 14: Documents

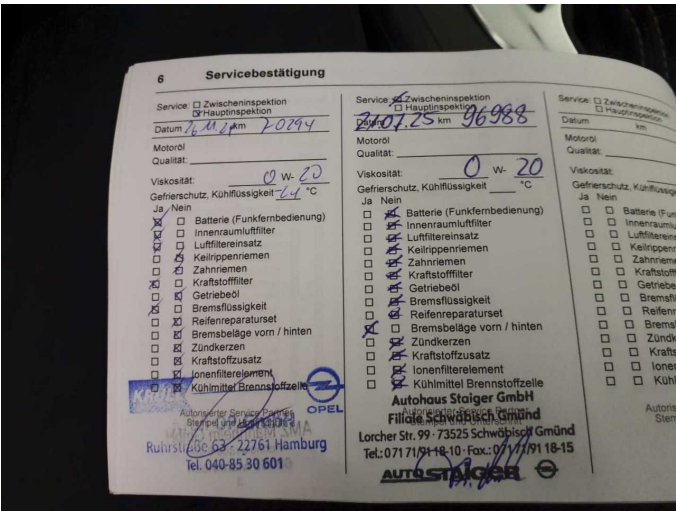


Figure 15: Documents



Figure 16: Additional tyres

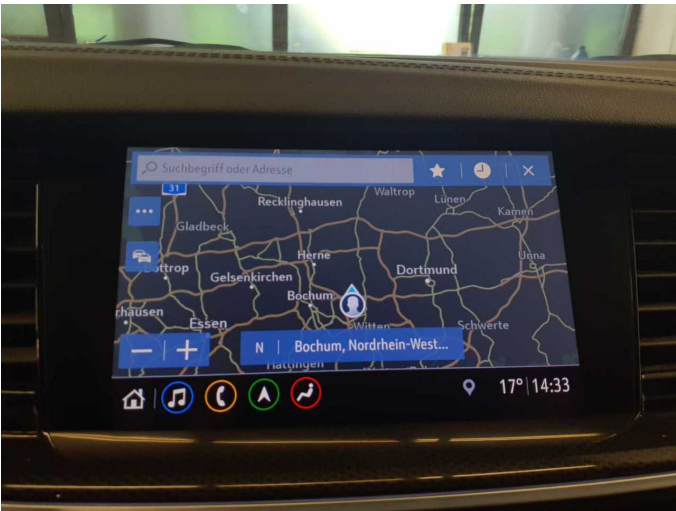


Figure 17: Navigation

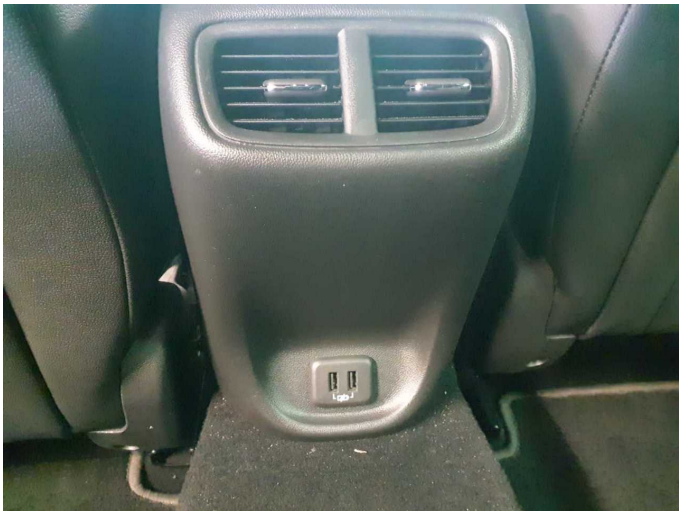


Figure 18: Misc.





Figure 19: Misc.



Figure 20: Misc.



Figure 21: Misc.



Figure 22: Misc.



Figure 23: Misc.



Figure 24: Misc.



Figure 25: Misc.



Figure 26: Misc.

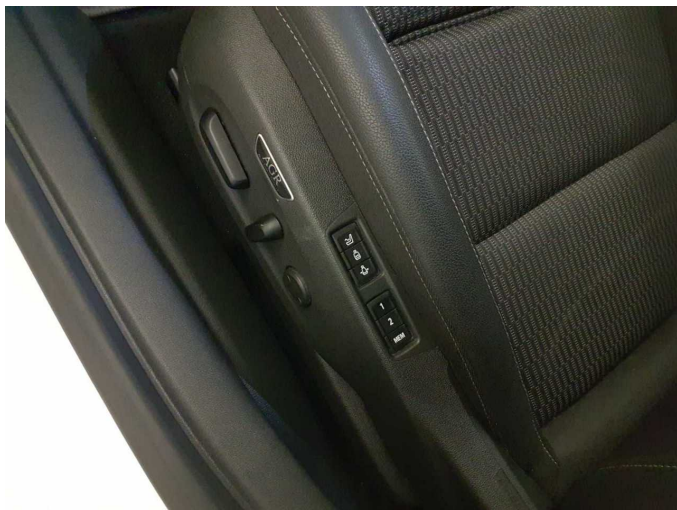


Figure 27: Misc.



Damage 1: Instrument panel: Indicator light (AdBlue) - on - Replace

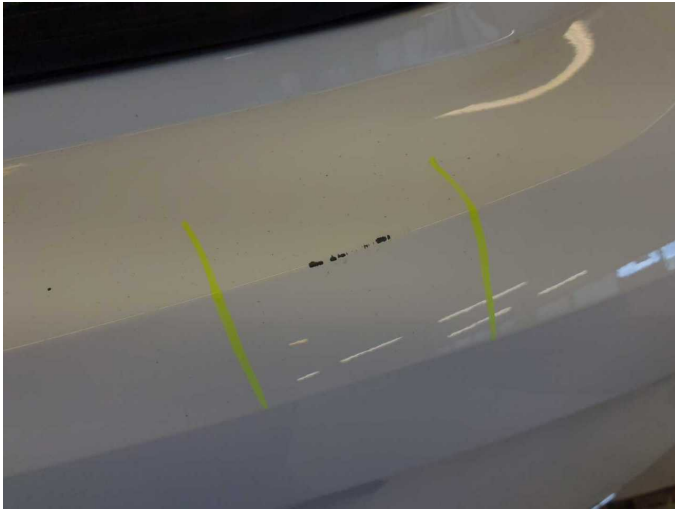


Damage 2: Rear bumper: Rear bumper - Scratch(es) - Smart repair



Damage 2: Rear bumper: Rear bumper - Scratch(es) - Smart repair





**Damage 2:** Rear bumper: Rear bumper - Scratch(es) - Smart repair



**Damage 3:** Wheel / tyres: Alloy rim - rear right side - Scratch(es) - Smart repair



**Damage 3:** Wheel / tyres: Alloy rim - rear right side - Scratch(es) - Smart repair



**Damage 3:** Wheel / tyres: Alloy rim - rear right side - Scratch(es) - Smart repair



**Damage 4:** 2nd wheel set: 2 tyres - Does not meet the leasing specifications - Replace



**Damage 4:** 2nd wheel set: 2 tyres - Does not meet the leasing specifications - Replace





**Damage 4:** 2nd wheel set: 2 tyres - Does not meet the leasing specifications - Replace



**Damage 4:** 2nd wheel set: 2 tyres - Does not meet the leasing specifications - Replace



**Damage 4:** 2nd wheel set: 2 tyres - Does not meet the leasing specifications - Replace



**Damage 4:** 2nd wheel set: 2 tyres - Does not meet the leasing specifications - Replace



**Damage 5:** Wheel / tyres: Alloy rim - front right side - Scratch(es) - Replace



**Damage 5:** Wheel / tyres: Alloy rim - front right side - Scratch(es) - Replace



**Damage 5:** Wheel / tyres: Alloy rim - front right side - Scratch(es) - Replace



**Damage 5:** Wheel / tyres: Alloy rim - front right side - Scratch(es) - Replace



**Damage 5:** Wheel / tyres: Alloy rim - front right side - Scratch(es) - Replace



**Damage 5:** Wheel / tyres: Alloy rim - front right side - Scratch(es) - Replace



**Damage 6:** Front bumper: Front bumper - Scratch(es) - Paint



**Damage 6:** Front bumper: Front bumper - Scratch(es) - Paint



**Damage 6:** Front bumper: Front bumper - Scratch(es) - Paint



**Damage 6:** Front bumper: Front bumper - Scratch(es) - Paint



**Damage 6:** Front bumper: Front bumper - Scratch(es) - Paint





# Wartungshistorie

(gemäß Auftraggeber Informationen)

Fahrgestellnummer: W0VZT6EP8N1030927

Hersteller / Modell: OPEL OPEL Insignia Grand Sport 2.0 Diesel Automatik Business

Datum	KM-Stand	Beschreibung
25.07.2025	96.988	Bremse Sonstiges; Bremsscheiben + Klötze h; Bremsscheiben + Klötze v; Bremsscheiben hinten; Bremsscheiben vorne; Motoröl b. Wartung; Ölfilter ern; Regelwartungsdienst; Wartung Sonstiges
26.11.2024	70.496	Bremsflüssigkeit; Bremsflüssigkeit ern; Kraftstofffilter ern; Luftfiltereinsatz ern; Motoröl b. Wartung; Ölfilter ern; Regelwartungsdienst; Wartung Sonstiges
27.09.2023	34.633	Motoröl b. Wartung; Ölfilter ern; Regelwartungsdienst; Wartung Sonstiges