



Expertise

Protocol number: 41259890
Order No. / Reference: 24903082
Inspection date: 25 Aug 2025

Manufacturer: Opel

Model: Insignia Sports Tourer 2.0 Diesel Aut. Ultimate

VIN: W0VZS8GP3N1024402



Vehicle details	
Manufacturer / Type / Model / Equipment	
Opel Insignia Sports Tourer 2.0 Diesel Aut. Ultimate	
Vehicle Identification number	W0VZS8GP3N1024402
Mileage (Read)	77,212 km
First registration	19 Aug 2022
Number of holders	1
Power / Engine displacement	128 kw / 1,955 ccm
Fuel type / Cylinder	Diesel / 4
Gearbox / Number of gears	Automatic / 8
Type of drive	Front drive
Type of vehicle	Station wagon
Colour / colour code	Diamant Schwarz Metallic
Doors / Seats	5 / 5
Upholstery type	Leather
Colour of upholstery	Black



Vehicle details

Maintenance booklet / proof	Available / complete	Next maintenance in	75 %
Last maintenance on / at	05/2025 at 77,150 km		
Key is / should be	2 / 2	FZG documents	ZB#2 (B) was available (copy), ZB#1 (S) was not available
		Letter No.	GN176103
Previous damage / Accident	None detectable	Repainting	None detectable
Inspection conditions	sufficient	Lifting equipment / pit	yes
Test drive	Not performed	Engine function test	Performed
Manufacturer key number/ type code number	1844 / AMC 00314		
Emission standard	EURO6;WLTP;AP;PI/CI; M, N1 I	Fine dust sticker	
Permitted total weight	2,215 kg	Empty weight	

Tyres

Mounted tyres

#	Tyre size	Type of tyre	Manufacturer	Tread depth
1)	245/35 R20 95W	Summer tyres on Light alloy	Continental	6mm / 6mm
2)	245/35 R20 95W	Summer tyres on Light alloy	Continental	6mm / 6mm

Replacement

Typ	Tyre size	Type of tyre	Manufacturer	Tread depth
	Tirefit	Expiration date 05/2029		

Legend: Tread depth information for tires on the left is in the first place, for tires on the right is in the second place on the axle in the direction of travel

Equipment

Standard equipment

- Storage compartments
- Airbag: front airbags and side airbags, driver and front passenger
- Anti-lock braking system (ABS)
- Hill Start Assist
- Brake light, third
- Roof rails, silver anodized
- diesel particulate filter
- Electronic brake force distribution (EBD)
- Electric windows front and rear
- Pedestrian protection including active bonnet
- Luggage compartment cover
- Cruise control
- GS Line Interior Equipment
- Rear window wiper
- Child safety lock in the rear doors, manual
- Front headrests
- LED headlights
- LED daytime running lights including LED indicators, front and LED taillights
- Center armrest, front
- Package: Innovations 1
- Parking pilot, front and rear parking aid
- Radio: Digital radio reception DAB+
- Radio accessories: 2 USB interfaces
- Tire repair kit
- Wheels: Light alloy wheels 8.5 J x 20 in 5-twin-spoke design
- Visual equipment
- Lane Keeping Assist
- socket, 12-volt, in the trunk
- Traction Control (TC) Plus
- Immobiliser
- Central locking with radio remote control
- Adaptive brake light
- Airbag: Head airbag front and rear outside
- Ambient lighting
- Exterior mirrors for driver and passenger side electrically adjustable and heated
- Glasses compartment in the roof lining
- Hexagon decorative strip
- tachometer
- Electronic Stabilization Program (ESP - Plus)
- Forward collision warning with pedestrian detection and automatic emergency braking
- Noise-reducing, laminated front side windows
- Transmission: 8-speed automatic transmission
- Back window, heater
- High Gloss Black exterior trim (Sports Tourer)
- Automatic climate control two zones
- Headrests, rear (3 pieces)
- LED fog lights
- Steering column height/length adjustable
- Make-up mirrors in both sun visors, illuminated
- Package: Easy Access
- Parking brake, electric
- Quickheat rapid heating system
- Radio: Multimedia Navi Pro with 8" touchscreen color display
- Tire pressure display
- Power steering
- Seat belts: Three-point seat belts on all seats
- Solar Protect thermal insulation glazing
- Start/Stop system
- Bumpers painted in body color
- Pre-installation for ISOFIX child seat retention system
- Wireless Charging

Extra equipment

- Upholstery: Siena leather upholstery, perforated, black including Winter Package 4 (Ergonomic active seat, (AGR), driver and passenger -Leather upholstery (leather seat contact surfaces; 2nd row center seat, headrests, door panels and outer seat bolsters in man-made leather) -Seat heating front/rear -Center armrest, rear, with cup holder and through-loading from the luggage compartment - Rear seat backrest with FlexFold function, 40:20:40 forward folding - Door sill plates with OPEL lettering, front -Heated leather steering wheel -Heated ThermoTec windshield -Seat Comfort Equipment 2 - Charging Package)
- Chassis: FlexRide premium chassis
- Package: Sound (Bose sound system)
- Paint finish: metallic
- Park & Go with digital rear view camera (digital rear view camera - reverse assist - lane change assist - blind spot warning, in both exterior mirrors)



Brief expert findings

Documents submitted	At the time of the inspection, the registration certificate Part 2 (letter) was available, but the registration certificate Part 1 (certificate) was not. (Copy)
VIN comparison	The vehicle identification number (VIN) was read from the vehicle and its conformity with the submitted documents was verified during the inspection by the undersigned.
Inspection	The inspection conditions were sufficient for the assessment of the vehicle. Lifting equipment and a pit were available for examining the vehicle.
Test drive	No test drive/maneuvering was carried out during the inspection of the vehicle.
Engine function test	An engine test run was performed.

Value reducing factors

No.	Component group	Description
1	Door - rear right side	Door - dent(s) - Smooth repair work
2	Wheel / tyres	Alloy rim - rear right side - Scratched - Loss in value
3	Wheel / tyres	Alloy rim - front right side - Scratched - Loss in value
4	Door - rear left side	Door - Dent / paintcoat damage - Repair and paint

Wear and tear

No.	Component group	Description
1	Bonnet	Bonnet - Stone chips - No deduction
2	Vehicle glazing	Windscreen - Stone chips - No deduction
3	Door - front left side	Door - Scratch(es) - No deduction
4	Rear bumper	Rear bumper - Scratch(es) - No deduction
5	Sill - right side	Trim - Scratch(es) - No deduction
6	Mudguard - right side	Mudguard - right side - Stone chips - No deduction

The vehicle shows signs of wear commensurate with its age and use.

Order/Scope of order

The order was placed to prepare a sales report for the vehicle described. This includes the following:

- Description of core relevant information about the vehicle
- Documentation of equipment features
(*Delivery by third-party service providers*)
- Documentation of damage, defects, missing parts
- Documentation of previous damage, unrepaired previous damage, repainting
- a brief visual or functional inspection of the equipment details if possible.
(*Functional tests of driver assistance systems are not included in the scope of services!*)
- a photo documentation of the vehicle



Basis for the order

This product is based on the Alphabet Fuhrpark GmbH guidelines for vehicle returns and valuations. The expert makes the explicit findings in each individual case objectively within the framework of the specified standards based on his or her own expertise.

The vehicle inspection takes place in a disassembled state.

Damage or defects that can only be detected during disassembly/diagnosis work or through advanced knowledge remain within the scope of the prognosis risk. An extended risk exists for concealed defects caused by fraudulent deception and not identifiable by the expert.

Damage or defects resulting from normal use or wear and tear of the vehicle will be accepted according to the applicable standard.

There was no explicit identification or monetary consideration of the expected features within the product.

Features which in their nature and severity slightly exceed normal use but do not constitute unacceptable damage will be documented and identified under signs of use if necessary.

Damage or defects which, according to the underlying standard, can no longer be attributed to normal use or wear and tear are listed in the product under "Depreciating Factors".

Depending on the product specification, a monetary ID can be provided. If this takes place, the costs can be 100% d or pro rata depending on the vehicle's age and mileage.

Previous damages

Apparently, no repaired previous damage could be found on the vehicle.



Figure 1: Diagonal front (left)



Figure 2: Diagonal front (right)



Figure 3: Diagonal rear (left)



Figure 4: Diagonal rear (right)



Figure 5: Interior - front

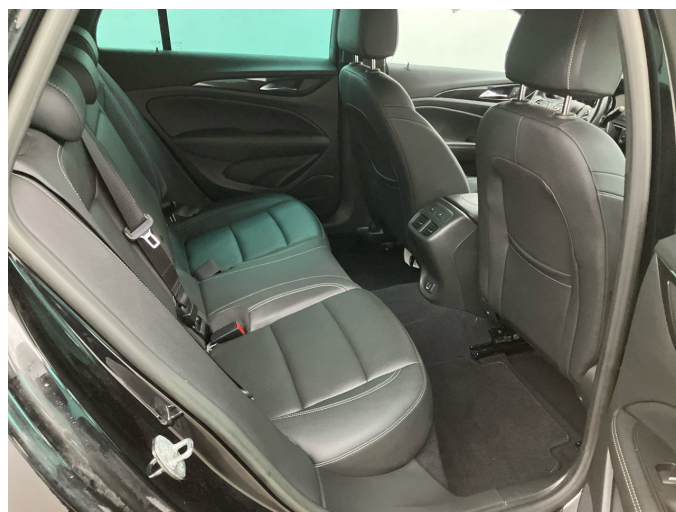


Figure 6: Interior - rear



Figure 7: Instrument cluster



Figure 8: Instrument panel



Figure 9: interior 360° view ([Online link](#))



Figure 10: Cargo area

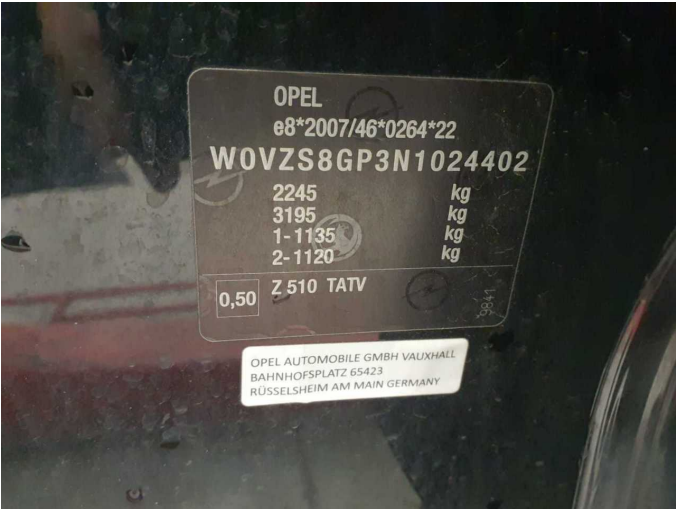


Figure 11: VIN



Figure 12: Mounted tyres



Figure 13: Documents

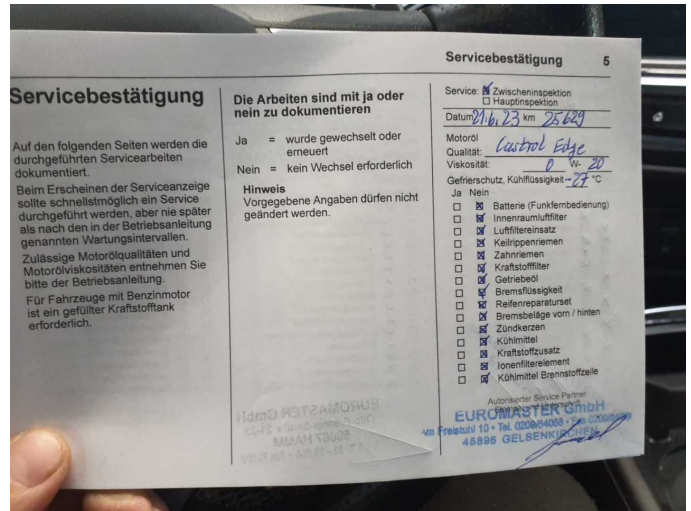


Figure 14: Documents

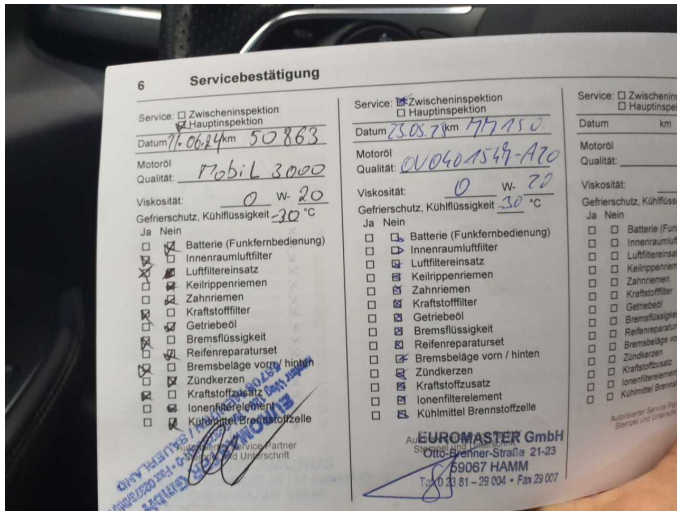


Figure 15: Documents



Figure 16: Documents

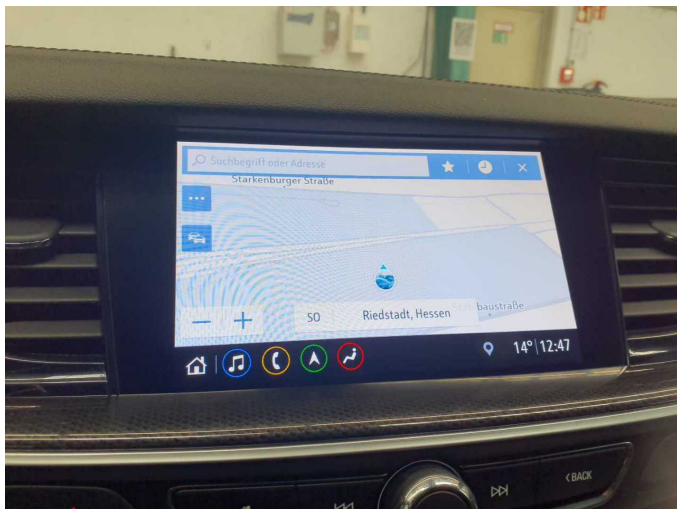


Figure 17: Navigation



Figure 18: Misc.



Figure 19: Misc.



Figure 20: Misc.



Figure 21: Misc.



Figure 22: Misc.



Figure 23: Misc.



Figure 24: Misc.

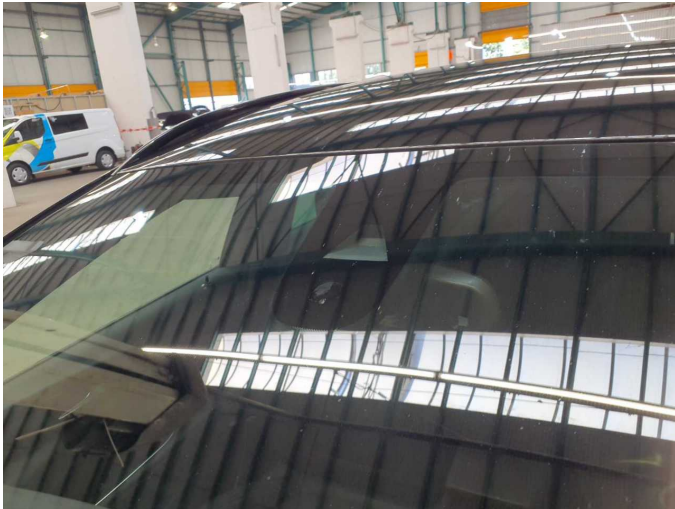


Figure 25: Misc.



Figure 26: Misc.

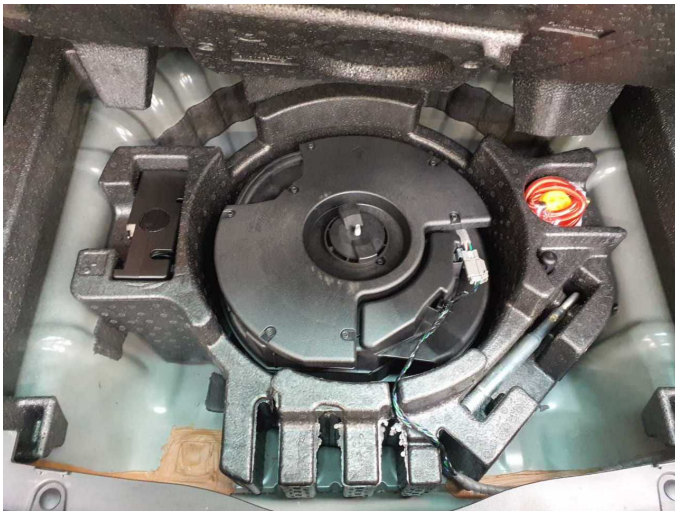


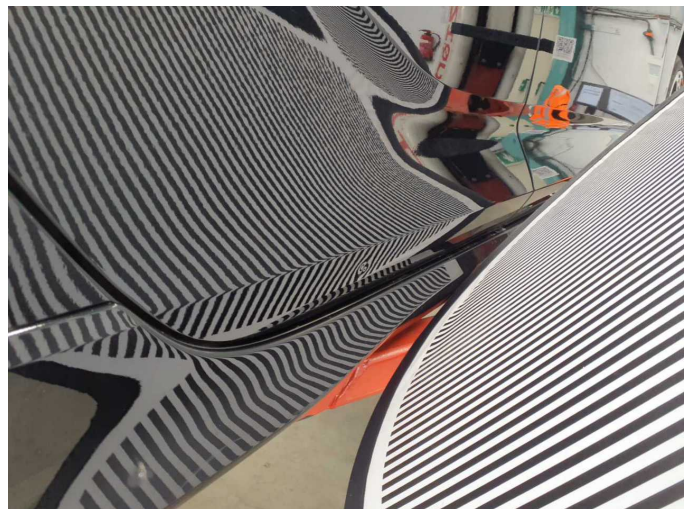
Figure 27: Misc.



Figure 28: Misc.



Damage 1: Door - rear right side: Door - dent(s) - Smooth repair work



Damage 1: Door - rear right side: Door - dent(s) - Smooth repair work



Damage 2: Wheel / tyres: Alloy rim - rear right side - Scratched - Loss in value



Damage 2: Wheel / tyres: Alloy rim - rear right side - Scratched - Loss in value



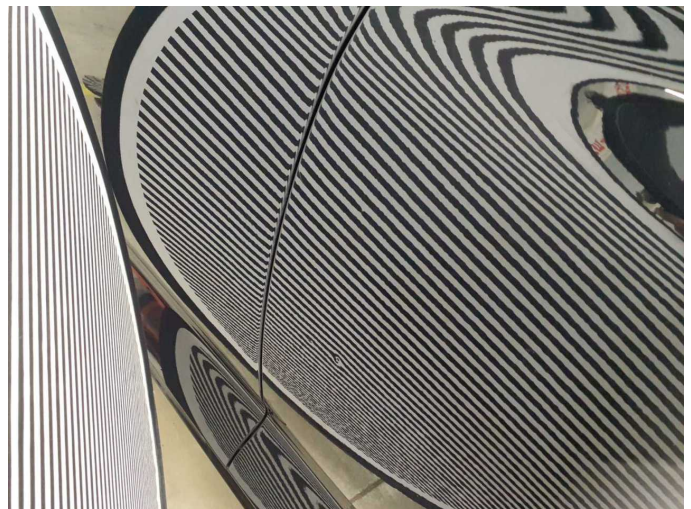
Damage 3: Wheel / tyres: Alloy rim - front right side - Scratched - Loss in value



Damage 3: Wheel / tyres: Alloy rim - front right side - Scratched - Loss in value



Damage 4: Door - rear left side: Door - Dent / paintcoat damage - Repair and paint



Damage 4: Door - rear left side: Door - Dent / paintcoat damage - Repair and paint



Damage 4: Door - rear left side: Door - Dent / paintcoat damage - Repair and paint