



Expertise

Protocol number: 39830122  
Order No. / Reference: 24685180  
Inspection date: 21 May 2025

Manufacturer: Opel	Model: Grandland X 1.5 D Start/Stop Automatik Business Elegance
VIN: W0VZCYHZ8M6814471	



Vehicle details	
Manufacturer / Type / Model / Equipment	
Opel Grandland X 1.5 D Start/Stop Automatik Business Elegance	
Vehicle Identification number	W0VZCYHZ8M6814471
Mileage (Read)	126,230 km
First registration	1 Apr 2021
Number of holders	1
Next periodical technical inspection	04/2026 (Report not on hand)
Power / Engine displacement	96 kw / 1,499 ccm
Fuel type / Cylinder	Diesel / 4
Gearbox / Number of gears	Automatic / 8
Type of drive	Front drive
Type of vehicle	SUV
Colour / colour code	Jade Weiß
Doors / Seats	5 / 5
Upholstery type	Leather
Colour of upholstery	Black
Re/Import	no
Driving readiness	Roadworthy



Vehicle details			
Maintenance booklet / proof	digital proof / complete	Next maintenance in	26,580 km
Last maintenance on / at	08/2024 at 106,982 km		
Key is / should be	2 / 2	FZG documents	ZB#2 (B) was available (copy), ZB#1 (S) was not available
		Letter No.	FX009800
Previous damage / Accident	Detectable	Repainting	None detectable
Inspection conditions	Sufficient	Lifting equipment / pit	yes
Test drive	Not performed	Engine function test	Performed
Driving readiness	Roadworthy		
Manufacturer key number/ type code number	1844 / AHG 00154		
Emission standard	EURO6;WLTP;AP;PI/CI; M, N1 I	Fine dust sticker	
Permitted total weight	2,000 kg	Empty weight	

## Tyres

Mounted tyres				
#	Tyre size	Type of tyre	Manufacturer	Tread depth
1)	215/65 R17 99H	Winter tyres on Light alloy	Continental	5mm / 5mm
2)	215/65 R17 99H	Winter tyres on Light alloy	Continental	8mm / 8mm
Additional tyres				
#	Tyre size	Type of tyre	Manufacturer	Tread depth
1)	225/55 R18 102V	Summer tyres on Light alloy	Michelin	4mm / 4mm
2)	225/55 R18 102V	Summer tyres on Light alloy	Michelin	5mm / 5mm
Replacement				
Typ	Tyre size	Type of tyre	Manufacturer	Tread depth
Tirefit		Expiration date 09/2025		

Legend: Tread depth information for tires on the left is in the first place, for tires on the right is in the second place on the axle in the direction of travel



## Equipment

### Standard equipment

- 230 V equipment
- Storage compartments
- Airbag driver and passenger side
- Airbag: Head airbags, front and rear outside
- Anti-lock braking system (ABS) with cornering brake control and brake assist
- On-board computer
- Decorative strips, Toba Grey
- tachometer
- Electronic brake force distribution (EBD)
- Electric windows front and rear
- Transmission: 8-speed automatic
- Interior equipment
- Child safety lock in the rear doors, manual
- Automatic climate control two-zone
- Front headrests, height adjustable
- Leather steering wheel including remote control
- Make-up mirrors in both sun visors, illuminated
- Fog light
- Park & Go Premium
- Upholstery: Leather
- Radio: Navi 5.0 IntelliLink with 8" touchscreen color display
- Tire pressure warning
- Keyless locking and starting system "Keyless Open & Start"
- Seat belts
- Seats: 5 seats
- Lane assistant
- Start/Stop system
- Phone: Wireless Charging
- Underbody protection look, front and rear, in silver
- Lashing eyes in the luggage compartment (4)
- Immobiliser
- Central locking with radio remote control and interior switches
- Low beam automatically
- Adaptive Driving Light AFL with LED technology
- Airbag: Chest-pelvis side airbags, driver and front passenger
- Exterior mirrors, electrically folding
- Hill Start Assist
- Braking system: Regenerative
- diesel particulate filter with SCR and Oxikat
- Electric parking brake
- Electronic Stability Program Plus (ESP Plus)
- Luggage compartment cover
- Rear window wiper
- Interior lighting, front and rear, with reading light front and rear
- Headrests (3) rear, height adjustable
- LED headlights
- Steering wheel, height and length adjustable
- Center armrest, movable, front, including storage compartment and cup holder
- Parking pilot, front and rear parking aid
- Quickheat heating system
- Radio accessories: Digital radio reception DAB+
- Wheels: Tire repair kit
- Service interval display
- Power steering, speed-dependent
- Visual equipment
- Seats: Premium ergonomic seats with AGR seal of approval, driver and front passenger
- socket, 12 volts
- blind spot warning system
- Traffic sign recognition
- Preparation for ISOFIX child seat fastening system, including Top Tether attachment eyes, rear outside

### Extra equipment

- Aluminum sports pedals
- Automatic speed assistant with stop function (Automatic speed assistant maintains the set speed and the selected distance (close, medium, far) to the vehicle in front by automatically braking or automatically accelerating (activation from 30 km/h to 180 km/h))
- Finish: Uni Jade White
- Radio accessories: Denon Premium Sound System (8 speakers - 1 subwoofer)
- Wheels: Light alloy 7.5 J x 18 with 5 double spokes in BiColor/Black (with tires 225/55 R 18)
- detachable trailer coupling (trailer stability program)
- roof and exterior mirrors in Diamond Black (including aluminum sports pedals)
- Roof rails, silver



- Seats: Heated seats front/rear (multi-level, driver and front passenger - Heated seats, rear - Heated leather steering wheel - FlexFold rear seat backrest, 40:60 split and foldable - Rear center armrest with through-loading option from the luggage compartment - Luggage compartment floor, 2-way height adjustable - Luggage compartment lighting)
- Forward collision warning with automatic emergency braking and pedestrian detection (monitors the distance (close, medium, far) to the vehicle ahead. If the driver approaches a vehicle ahead or a pedestrian too quickly, a warning tone and a message appear in the driver information display. If there is a risk of collision, the braking system is prepared and, if necessary, emergency braking is initiated to minimize the consequences of a potential collision. - Lane Keeping Assist: Warning when the driver unintentionally leaves the lane - Drowsiness detection)
- Solar Protect thermal insulation glazing (heavily tinted, in the rear)

## Brief expert findings

Documents submitted	At the time of the inspection, the registration certificate part 2 (letter) was available, but the registration certificate part 1 (certificate) was not available. (Copy)
VIN comparison	The vehicle identification number (VIN) was read and the undersigned verified that it matched the documents submitted during the inspection.
Inspection	The inspection conditions were sufficient for the assessment of the vehicle. Lifting equipment and a pit were available for examining the vehicle.
Test drive	No test drive/maneuvering was carried out during the inspection of the vehicle.
Engine function test	An engine test run was performed.
Driving readiness	The vehicle was drivable at the time of inspection.

## Value reducing factors

No.	Component group	Description
1	Roof	Roof - dent(s) - Smooth repair work
2	Front bumper	Spoiler - Differs from the original configuration - Un- / install

## Wear and tear

No.	Component group	Description
1	Bonnet	Bonnet - Stone chips - No deduction

The vehicle shows signs of wear commensurate with its age and use.

## Previous damages

No.	Previous damage	Extent of damage (Net)
1	Front, Provided by user / customer, from 2 May 2022	3.435,44 €

## Order/Scope of order

The order was placed to prepare a sales report for the vehicle described. This includes the following:

- Description of core relevant information about the vehicle
- Documentation of equipment features  
(Delivery by third-party service providers)
- Documentation of damage, defects, missing parts
- Documentation of previous damage, unrepaired previous damage, repainting
- a brief visual or functional inspection of the equipment details if possible.  
(Functional tests of driver assistance systems are not included in the scope of services!)
- a photo documentation of the vehicle



## Basis for the order

This product is based on the Alphabet Fuhrpark GmbH guidelines for vehicle returns and valuations. The expert makes the explicit findings in each individual case objectively within the framework of the specified standards based on his or her own expertise.

The vehicle inspection takes place in a disassembled state.

Damage or defects that can only be detected during disassembly/diagnosis work or through advanced knowledge remain within the scope of the prognosis risk. An extended risk exists for concealed defects caused by fraudulent deception and not identifiable by the expert.

Damage or defects resulting from normal use or wear and tear of the vehicle will be accepted according to the applicable standard.

There was no explicit identification or monetary consideration of the expected features within the product.

Features which in their nature and severity slightly exceed normal use but do not constitute unacceptable damage will be documented and identified under signs of use if necessary.

Damage or defects which, according to the underlying standard, can no longer be attributed to normal use or wear and tear are listed in the product under "Depreciating Factors".

Depending on the product specification, a monetary ID can be provided. If this takes place, the costs can be 100% d or pro rata depending on the vehicle's age and mileage.

## Previous damages

According to available information previous damages were repaired at the vehicle. Traces of repairs, which allow conclusions about the area of repair, were not recognizable during the inspection.

## Comments

- Für den montierten Radsatz wurde kein Nachweis erbracht.
- Winterradsatz ist kein Bestandteil des Auslieferungsumfangs.





Figure 1: Diagonal front (left)



Figure 2: Diagonal front (right)



Figure 3: Diagonal rear (left)



Figure 4: Diagonal rear (right)



Figure 5: Interior - front



Figure 6: Interior - rear





Figure 7: Instrument cluster



Figure 8: Instrument panel



Figure 9: interior 360° view



Figure 10: Cargo area

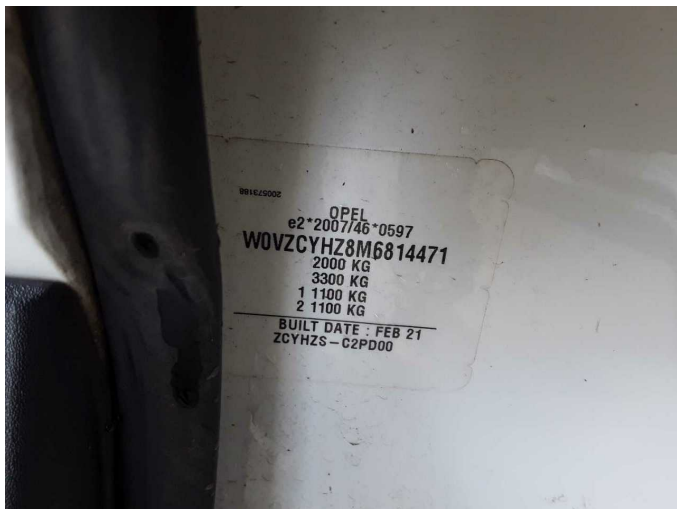


Figure 11: VIN



Figure 12: Mounted tyres



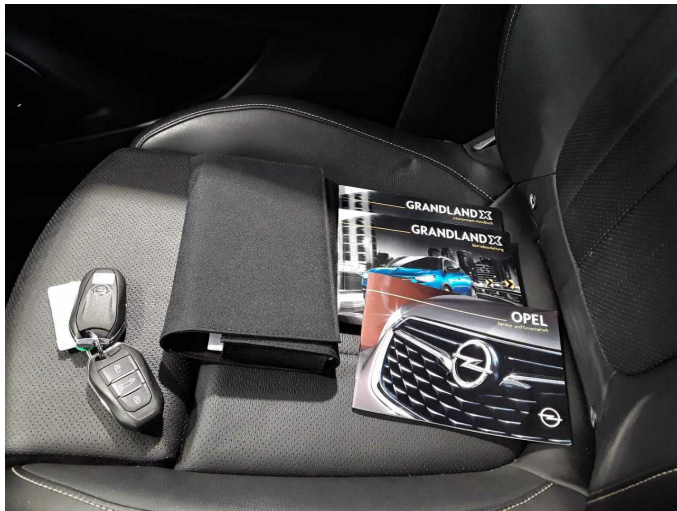


Figure 13: Documents



Figure 14: Documents



Figure 15: Documents



Figure 16: Additional tyres

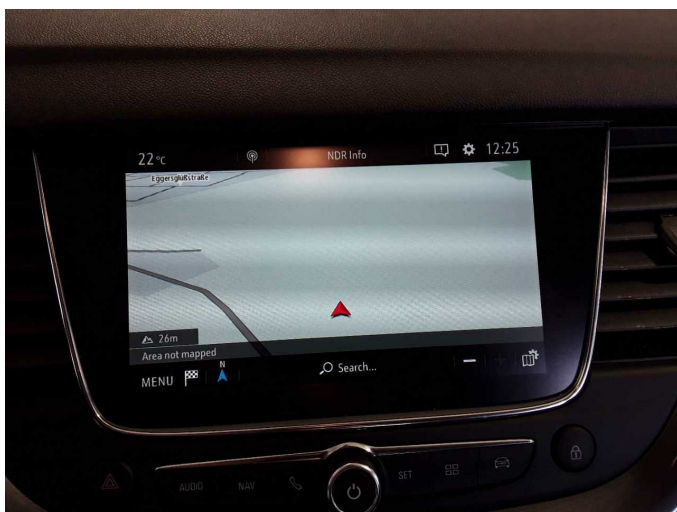


Figure 17: Navigation

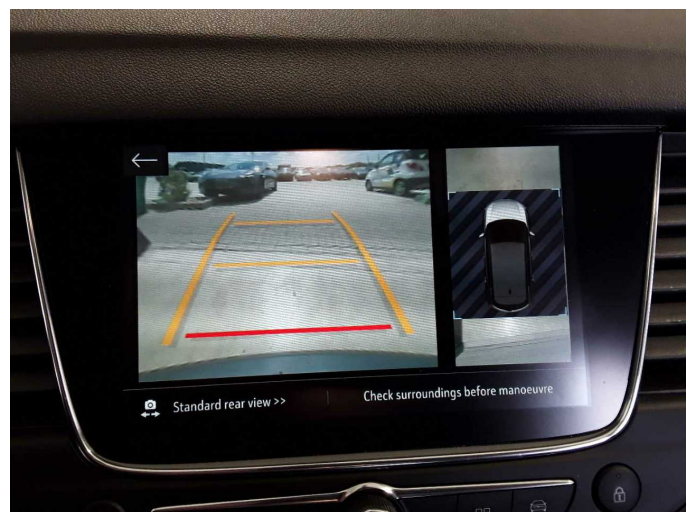


Figure 18: Misc.





Figure 19: Misc.



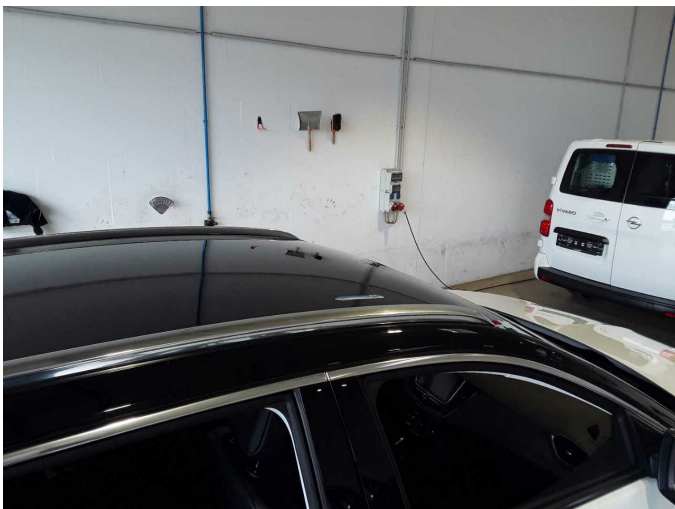
Figure 20: Misc.



Figure 21: Misc.



Figure 22: Misc.



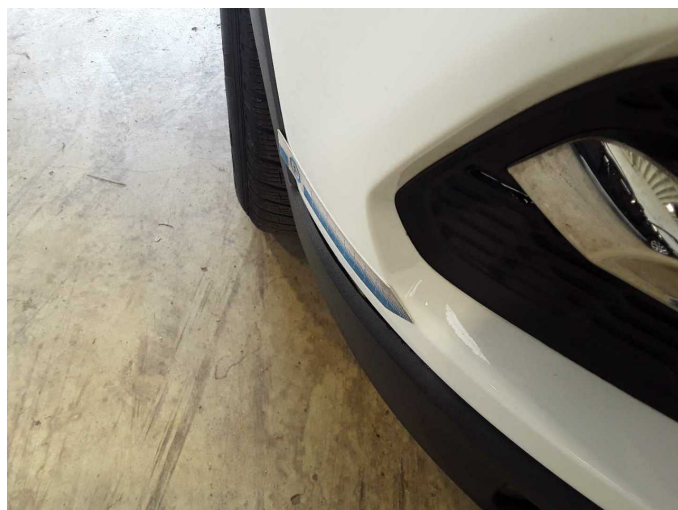
Damage 1: Roof: Roof - dent(s) - Smooth repair work



Damage 1: Roof: Roof - dent(s) - Smooth repair work



**Damage 2:** Front bumper: Spoiler - Differs from the original configuration  
- Un- / install



**Damage 2:** Front bumper: Spoiler - Differs from the original configuration  
- Un- / install



**Damage 2:** Front bumper: Spoiler - Differs from the original configuration  
- Un- / install