



Expertise

Protocol number: 41690119
Order No. / Reference: 25210542
Inspection date: 25 Sept 2025

Manufacturer: Opel	Model: Grandland 1.5 D Automatik Business Elegance
VIN: W0VZCYHZ1N6828973	



Vehicle details	
Manufacturer / Type / Model / Equipment	
Opel Grandland 1.5 D Automatik Business Elegance	
Vehicle Identification number	W0VZCYHZ1N6828973
Mileage (Read)	75,689 km
First registration	9 Nov 2022
Number of holders	1
Next periodical technical inspection	11/2025
(Report not on hand)	
Power / Engine displacement	96 kw / 1,499 ccm
Fuel type / Cylinder	Diesel / 4
Gearbox / Number of gears	Automatic / 8
Type of drive	Front drive
Type of vehicle	Station wagon
Colour / colour code	Diamant Schwarz Metallic
Doors / Seats	5 / 5
Upholstery type	Cloth / leather combination
Colour of upholstery	Black-Anthracite
Re/Import	no
Vehicle with smoke odor	no
Driving readiness	Roadworthy



Vehicle details

Maintenance booklet / proof	digital proof / complete	Next maintenance in	23,300 km
Last maintenance on / at	07/2025 at 68,000 km		
Key is / should be	2 / 2	FZG documents	ZB#2 (B) was available (copy), ZB#1 (S) was not available
		Letter No.	GN181717
Previous damage / Accident	None detectable	Repainting	None detectable
Inspection conditions	sufficient	Lifting equipment / pit	yes
Test drive	short drive on the company premises	Engine function test	Performed
Driving readiness	Roadworthy		
Manufacturer key number/ type code number	1844 / AHG 00221		
Emission standard	EURO6;WLTP;AP;PI/CI; M, N1 I	Fine dust sticker	
Permitted total weight	2,000 kg	Empty weight	

Tyres

Mounted tyres

#	Tyre size	Type of tyre	Manufacturer	Tread depth
1)	225/55 R18 102V	Summer tyres on Light alloy	Michelin	6mm / 6mm
2)	225/55 R18 102V	Summer tyres on Light alloy	Michelin	6mm / 6mm

Additional tyres

#	Tyre size	Type of tyre	Manufacturer	Tread depth
1)	215/70 R16 100T	Winter tyres on Light alloy	Hankook	4mm / 4mm
2)	215/70 R16 100T	Winter tyres on Light alloy	Hankook	4mm / 4mm

Replacement

Typ	Tyre size	Type of tyre	Manufacturer	Tread depth
	Tirefit	Expiration date 12/2027		

Legend: Tread depth information for tires on the left is in the first place, for tires on the right is in the second place on the axle in the direction of travel

Equipment

Standard equipment

- 2 ignition keys, both foldable
- Storage compartments (storage compartment in the instrument panel, driver's side - storage compartment in the center console, front - storage compartment in the front doors, suitable for 1.5-liter drinks bottles - storage compartment in the rear doors, suitable for 1.0-liter drinks bottles - glove compartment, illuminated, with cooling and heating function - bag hooks, on the side of the luggage compartment - lashing eyes in the luggage compartment)
- Exterior mirrors electrically adjustable and heated
- Hill Start Assist
- Roof design line in chrome
- Diesel particulate filter with SCR and Oxikat
- Electric parking brake
- Electronic Stability Program Plus (ESP Plus)
- Forward Collision Warning (monitors the distance (near, medium, far) to the vehicle ahead. If the vehicle or pedestrian is approached too quickly, a warning tone and a message are displayed in the driver information display. - with automatic emergency braking and pedestrian detection - Lane Keeping Assist: warning if the vehicle unintentionally leaves the lane - traffic sign recognition - drowsiness detection)
- Interior rearview mirror, automatically dimming
- IntelliLux LED Pixel Matrix Light (Adaptive LED matrix headlights with individual light distribution and the following functions: - City light - Motorway light - Country road light - Static curve light - Cornering light - Parking function light - High beam: traffic-dependent fading taking into account preceding and oncoming traffic - Automatic headlight range control - Fog lights)
- LED headlights (LED taillights - LED front indicators - manual headlight range adjustment - high beam assistant)
- Center armrest, movable, front, including storage compartment and cup holder
- Quickheat heating system
- Radio: Multimedia Navi Pro (with 10" color touchscreen display and voice control for audio, telephone, and navigation - Navigation: with integrated memory, European road map, 3D map display, dynamic route guidance via map and/or arrow display, GPS module - Email display and reading - USB ports - Shark fin antenna in high-gloss black - Bluetooth audio streaming - Hands-free system - Smartphone integration, Apple CarPlay, Android Auto - Radio)
- Tire pressure warning
- Wheels: Tire repair kit (with tire sealant and 12-volt compressor (without jack))
- 230 V equipment (230 V socket on the center console, rear - 12 V socket in the luggage compartment)
- Airbag driver and passenger side
- Airbag: front and side airbags
- Airbag: Head airbags, front and rear outside
- Anti-lock braking system (ABS) with cornering brake control and brake assist
- Automatic activation of the hazard warning lights (and unlocking of the doors after airbag and belt tensioner deployment)
- On-board computer
- Decorative strips, Erino/Palladium Medium
- tachometer
- Electronic brake force distribution (EBD)
- Electric windows front and rear (with touch function and anti-pinch protection)
- Luggage compartment cover
- Cruise control with intelligent speed limiter (The intelligent speed limiter, in conjunction with traffic sign recognition, allows for quick adjustment of the speed)
- Transmission: 8-speed automatic
- Rear window wiper
- Interior lighting, front and rear (with reading lights front and rear - luggage compartment lighting)
- Child safety lock in the rear doors, manual
- Automatic two-zone climate control including rear footwell heating (with separate temperature control for driver and front passenger - manual air recirculation - automatic air distribution - sun position sensor - particle and odor filter)
- Headrests (3) rear, height adjustable
- Front headrests, height adjustable
- Leather steering wheel including remote control
- Steering wheel, height and length adjustable
- Make-up mirror in sun visor, illuminated, driver and passenger
- Park & Go (rear view camera - Automatic Parking Assistant (detection of parallel and perpendicular parking spaces at speeds below 20 km/h, exiting parallel parking spaces, automatic vehicle steering), including Park Pilot, front and rear parking aid with audio-visual warning - electrically folding exterior mirrors - Blind Spot Warning in both exterior mirrors (active between 12 km/h and 140 km/h))
- Radio accessories: DAB+ digital radio reception (offers a wider selection of radio programs. Digitally broadcast radio stations and traffic information can be received.)
- Rain sensor
- Wheels: Light alloy 7.5 J x 18 with 5 double spokes in BiColor/Black (with tires 225/55 R 18)



- Seat belts (three-point seat belts on all seats - height-adjustable seat belts, front - belt force limiters, front and rear outer - double belt pretensioners, front - belt pretensioners, rear outer - warning audible and warning light for unfastened seat belts, front and rear)
- Seats: Rear seat backrest in 40:60 split and foldable
- Solar Protect heat-insulating glazing (heavily tinted, in the rear)
- Start/Stop System (Reinforced starter - High-performance battery - Switch to deactivate the start/stop function)
- 12 volt socket (in the center console, front)
- Phone: Wireless Charging
- Immobiliser
- Central locking with radio remote control and interior switches
- Power steering, speed-dependent
- Seats: Ergonomic active seat with AGR seal of approval, driver (length, height, and backrest angle manually adjustable - seat angle, electrically adjustable - lumbar support, electro-pneumatically adjustable in height and length - extendable thigh support, manually adjustable - pocket on front seat backrest - all seats in fabric/ premium leather look, black)
- Lane assistant (warning if the vehicle unintentionally leaves the lane at speeds of 60 km/h or more via a warning tone and indicator light in the driver information display)
- Bumpers and side panels in high-gloss black
- Preparation for ISOFIX child seat fastening system, including Top Tether fastening eyes, rear outside (and for ISOFIX child seat fastening system on the front passenger seat)

Extra equipment

- Removable trailer coupling (trailer stability program)
- Paint finish: metallic
- Wheels: Light alloy 7.5 J x 18 with 5 spokes in grey
- safety net
- Forward Collision Warning (monitors the distance (near, medium, far) to the vehicle ahead. If the vehicle ahead or a pedestrian is approached too quickly, a warning tone sounds and a message appears in the driver information display. - with automatic emergency braking and pedestrian detection - Lane Keeping Assist: warning if the driver unintentionally leaves the lane - traffic sign recognition - drowsiness detection - automatic speed assistant with stop & go function - automatic dipped beam)

Brief expert findings

Documents submitted	At the time of the inspection, the registration certificate Part 2 (letter) was available, but the registration certificate Part 1 (certificate) was not. (Copy)
VIN comparison	The vehicle identification number (VIN) was read from the vehicle and its conformity with the submitted documents was verified during the inspection by the undersigned.
Inspection	The inspection conditions were sufficient for the assessment of the vehicle. Lifting equipment and a pit were available for examining the vehicle.
Test drive	A short movement and shunting trip was carried out on the company premises.
Engine function test	An engine test run was performed.
Driving readiness	The vehicle was drivable at the time of inspection.

Value reducing factors

No.	Component group	Description
1	Sill - right side	Sill - Scratch(es) - Smart repair
2	Side panel - rear right side	Sill - Scratch(es) - Smart repair
3	Boot lid / rear door	Boot lid - Scratch(es) - Smart repair
4	Side panel - rear right side	Side panel - dent(s) - Repair and paint

Wear and tear

No.	Component group	Description
1	Wheel / tyres	Alloy rim - rear right side - Scratch(es) - No deduction
2	Wheel / tyres	Alloy rim - rear left side - Scratch(es) - No deduction
3	Wheel / tyres	Alloy rim - front left side - Scratch(es) - No deduction



No.	Component group	Description
4	Front bumper	Front bumper - Stone chips - No deduction
5	Bonnet	Bonnet - Stone chips - No deduction
6	Body	Body - Scratch(es) - No deduction
7	Door - rear left side	Door edge - Scratch(es) - No deduction
8	Door - front left side	Door edge - Scratch(es) - No deduction
9	Vehicle glazing	Windscreen - Stone chips - No deduction
10	Roof	Roof - Stone chips - No deduction

The vehicle shows signs of wear commensurate with its age and use.

Order/Scope of order

The order was placed to prepare a sales report for the vehicle described. This includes the following:

- Description of core relevant information about the vehicle
- Documentation of equipment features
(*Delivery by third-party service providers*)
- Documentation of damage, defects, missing parts
- Documentation of previous damage, unrepaired previous damage, repainting
- a brief visual or functional inspection of the equipment details if possible.
(*Functional tests of driver assistance systems are not included in the scope of services!*)
- a photo documentation of the vehicle

Basis for the order

This product is based on the Alphabet Fuhrpark GmbH guidelines for vehicle returns and valuations. The expert makes the explicit findings in each individual case objectively within the framework of the specified standards based on his or her own expertise.

The vehicle inspection takes place in a disassembled state.

Damage or defects that can only be detected during disassembly/diagnosis work or through advanced knowledge remain within the scope of the prognosis risk. An extended risk exists for concealed defects caused by fraudulent deception and not identifiable by the expert.

Damage or defects resulting from normal use or wear and tear of the vehicle will be accepted according to the applicable standard.

There was no explicit identification or monetary consideration of the expected features within the product.

Features which in their nature and severity slightly exceed normal use but do not constitute unacceptable damage will be documented and identified under signs of use if necessary.

Damage or defects which, according to the underlying standard, can no longer be attributed to normal use or wear and tear are listed in the product under "Depreciating Factors".

Depending on the product specification, a monetary ID can be provided. If this takes place, the costs can be 100% d or pro rata depending on the vehicle's age and mileage.

Previous damages

Apparently, no repaired previous damage could be found on the vehicle.

Comments

- Winterradsatz ist kein Bestandteil des Auslieferumfangs.



Figure 1: Diagonal front (left)



Figure 2: Diagonal front (right)



Figure 3: Diagonal rear (left)



Figure 4: Diagonal rear (right)



Figure 5: Interior - front



Figure 6: Interior - rear



Figure 7: Instrument cluster



Figure 8: Instrument panel



Figure 9: Interior 360° view



Figure 10: Cargo area

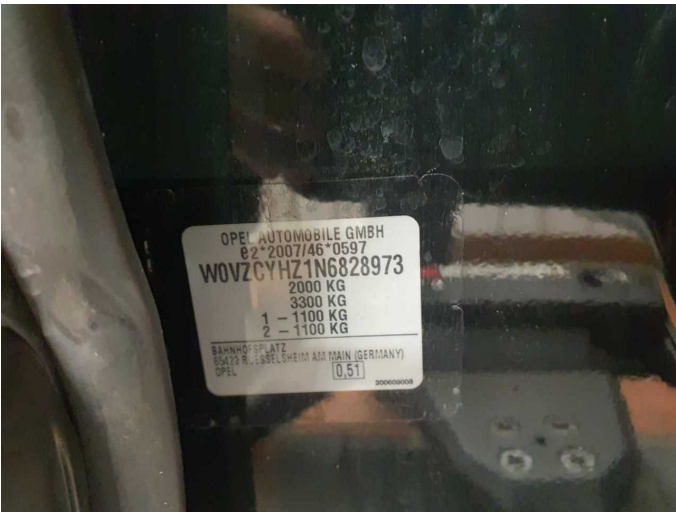


Figure 11: VIN



Figure 12: Mounted tyres



Figure 13: Documents



Figure 14: Documents



Figure 15: Documents



Figure 16: Additional tyres

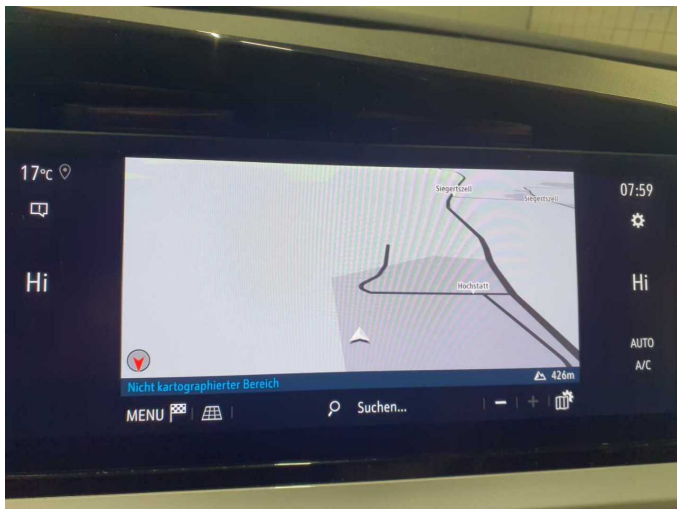


Figure 17: Navigation



Figure 18: Misc.



Figure 19: Misc.



Figure 20: Misc.



Figure 21: Misc.



Figure 22: Misc.

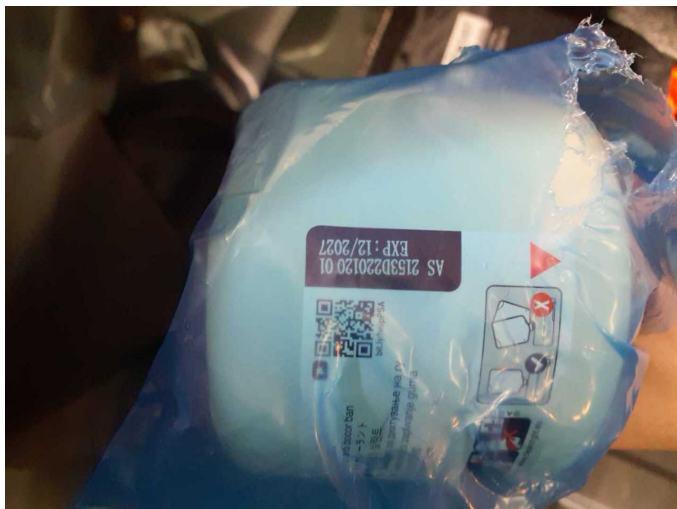


Figure 23: Misc.



Figure 24: Misc.



Figure 25: Misc.



Figure 26: Misc.

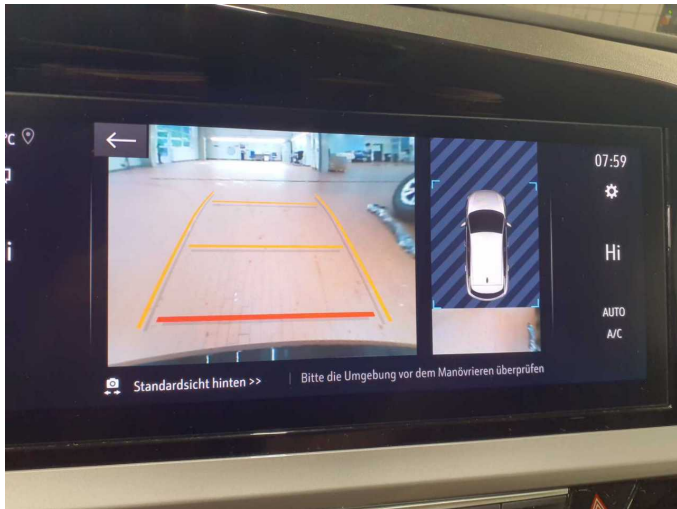


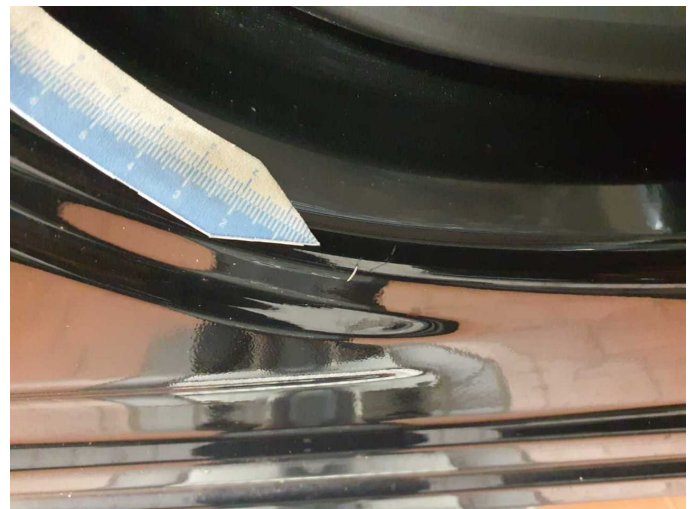
Figure 27: Misc.



Figure 28: Misc.



Figure 29: Misc.



Damage 1: Sill - right side: Sill - Scratch(es) - Smart repair



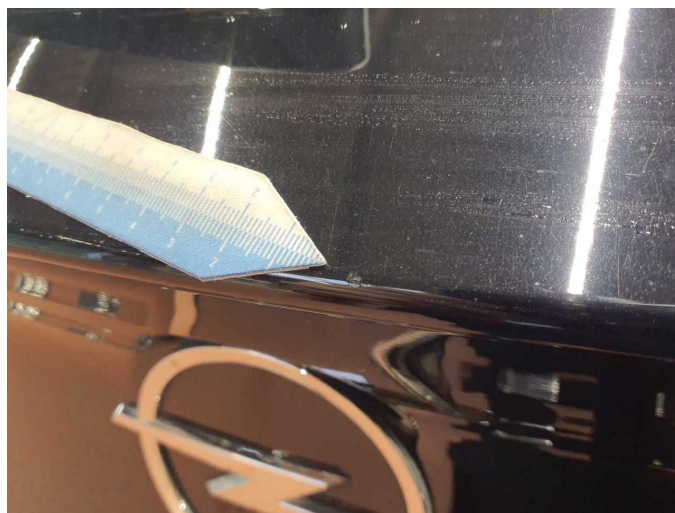
Damage 1: Sill - right side: Sill - Scratch(es) - Smart repair



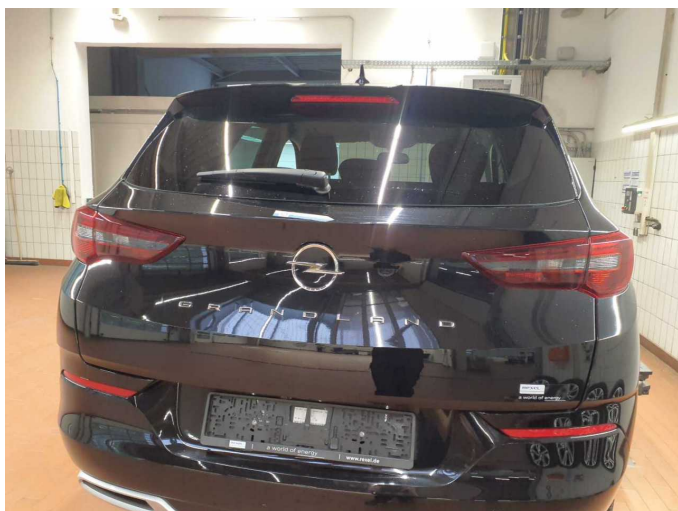
Damage 2: Side panel - rear right side: Sill - Scratch(es) - Smart repair



Damage 2: Side panel - rear right side: Sill - Scratch(es) - Smart repair



Damage 3: Boot lid / rear door: Boot lid - Scratch(es) - Smart repair



Damage 3: Boot lid / rear door: Boot lid - Scratch(es) - Smart repair



Damage 4: Side panel - rear right side: Side panel - dent(s) - Repair and paint



Damage 4: Side panel - rear right side: Side panel - dent(s) - Repair and paint



Wartungshistorie

(gemäß Auftraggeber Informationen)

Fahrgestellnummer: W0VZCYHZ1N6828973

Hersteller / Modell: OPEL OPEL Grandland 1.5 D Automatik Business Elegance

Datum	KM-Stand	Beschreibung
28.07.2025	68.000	Bremse Sonstiges; Bremsflüssigkeit; Bremsflüssigkeit ern; Bremsklötze vorne; Bremsscheiben + Klötze v; Bremsscheiben vorne; Kraftstofffilter ern; Luftfiltereinsatz ern; Motoröl b. Wartung; Ölfilter ern; Regelwartungsdienst; Systemtest/Eigendiagnose; Wartung Sonstiges
21.01.2025	53.877	Kraftstofffilter ern; Luftfiltereinsatz ern; Motoröl b. Wartung; Ölfilter ern; Regelwartungsdienst; Systemtest/Eigendiagnose; Wartung Sonstiges
27.09.2023	24.244	Motoröl b. Wartung; Ölfilter ern; Ölwechsel; Wartung Sonstiges