



# OPEL Grandland

## Grandland 1.5 D Automatik

VIN NO W0VZCYHZ0N6833680  
Registration Number Z0N6833680



MOT Date	Number of Owners	Number of Keys	Odometer Reading
2027-07-01	-	2	68372 km
Last Service	Last Service Mileage	First Registration Date	Country First Registered
2025-07-03	51401	2023-02-24	Germany

### Inspection Report Summary

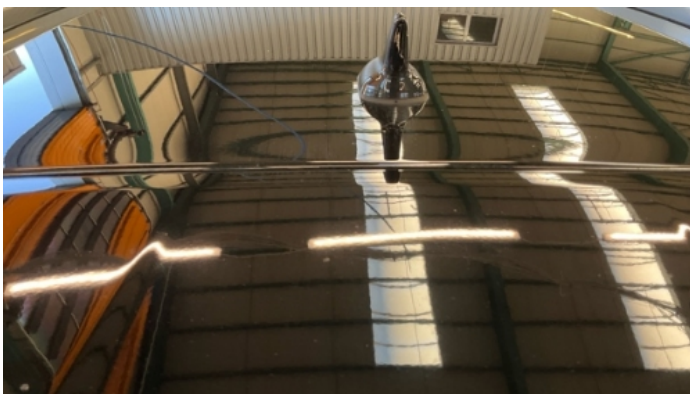
Customer	BCA Online	Report Number	P20250919090900
Inspection Date / Place	2025-09-19 / ARS Altmann AG Riedstadt	Cosmetic Grade	3

### Vehicle Summary

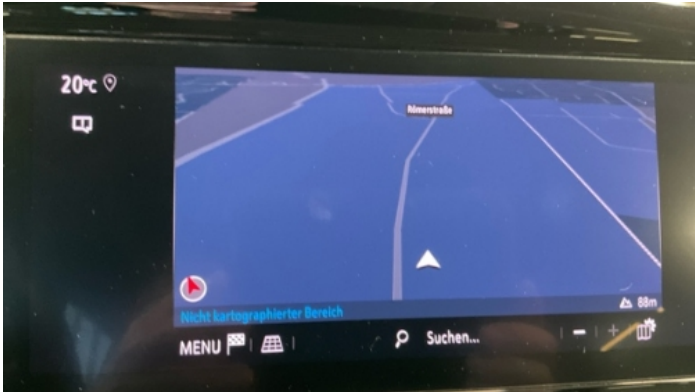
Vehicle Condition	Runner	VAT Type	Margin
Fuel Type	Diesel	Road Worthy	Yes
Colour	White	Engine Size (cc)	1499
Engine Size	1.5	No of Doors	5
Body Type	SUV	Drive Train	Front
Seat Colour		No of Seats	5
Seat Covering Name	Schwarz	Seat Covering	Cloth/Synthetic Leather
Charging Cables		WLTP CO2 Emissions	
Gearbox Type	Automatic		

### Vehicle History & Documents

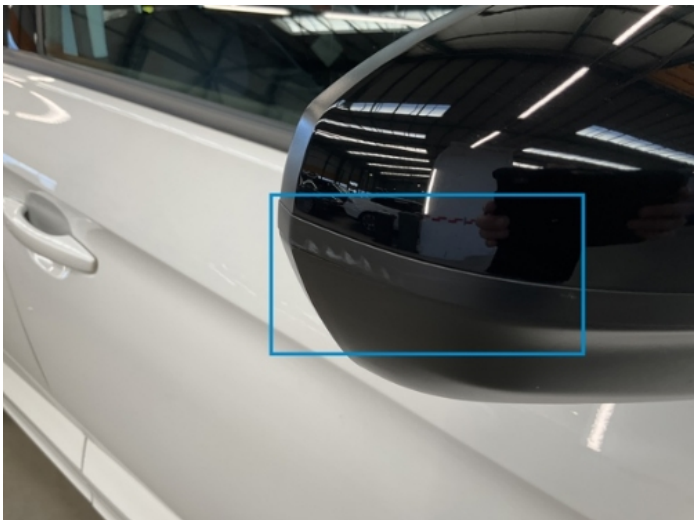
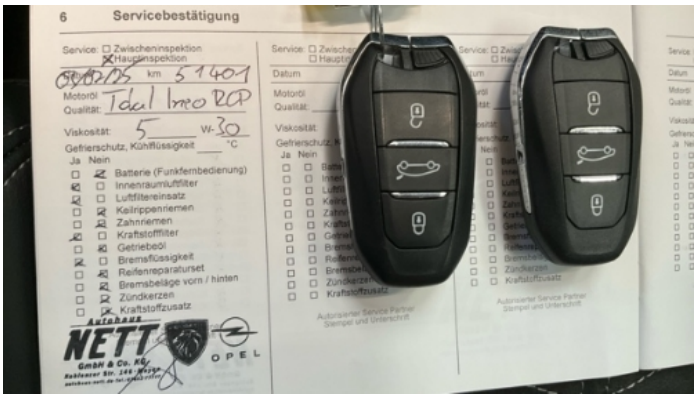
Service Book Available	Full Service History	Next Service Mileage	km
Previous Usage		Imported	Yes
Manufacturer Warrenty			











Equipment

Tinted Glass	Trip Computer	Adaptivecruisecontrol	Alloys wheels
Bluetooth telephone interface	Diesel particulate filter	Digitaldashboard	Front parking sensors
Remote adjusting wing mirrors	Reversing Camera	Satellite navigation	Stability control
Distancewarningsystem	Electrictailgate	Keyless Entry	Leather steering wheel
Radio	Rear parking sensors	Trafficsignrecognition	USB Socket
Airbag Status	Anti-lock braking	Cruise control	Digital Radio
Front fog lamps	Heated wing mirrors	Remote central locking	Roof rails
Split folding rear seats	Central locking	Electrically folding wing mirrors	Emergencybrakeassist
Laneassist	LED Headlamps	Rain sensitive windscreen wipers	

Equipment Details

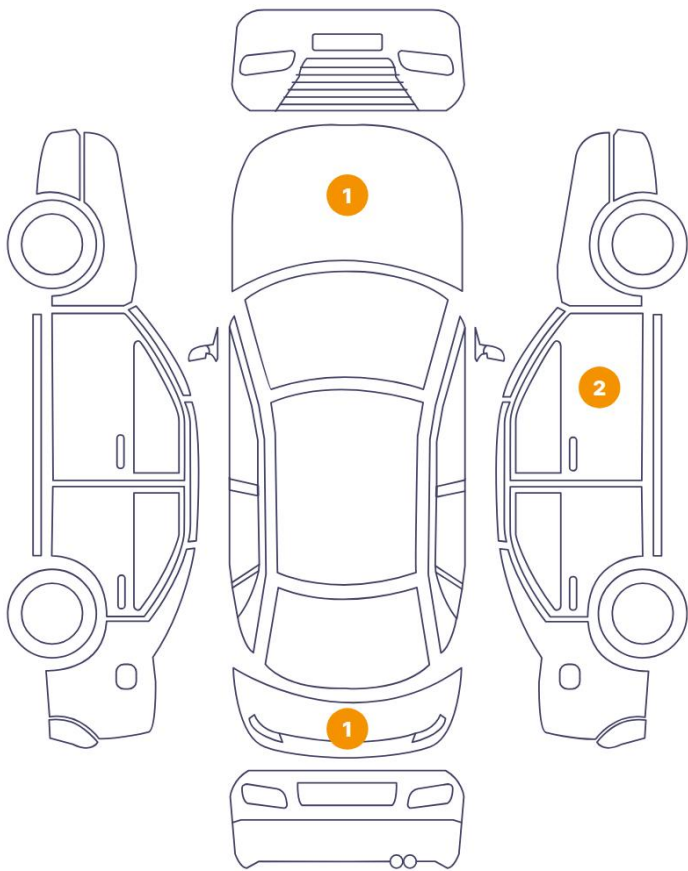
Air Conditioning	Dual Zone Climate Control	Alloy Wheel Size	18
Seat Heating	Front		

Wheels & Tyres

Right Front Tyre Depth	5	Left Front Tyre Depth	5
Right Rear Tyre Depth	5	Left Rear Tyre Depth	5

Cosmetic Damage

4 Schäden



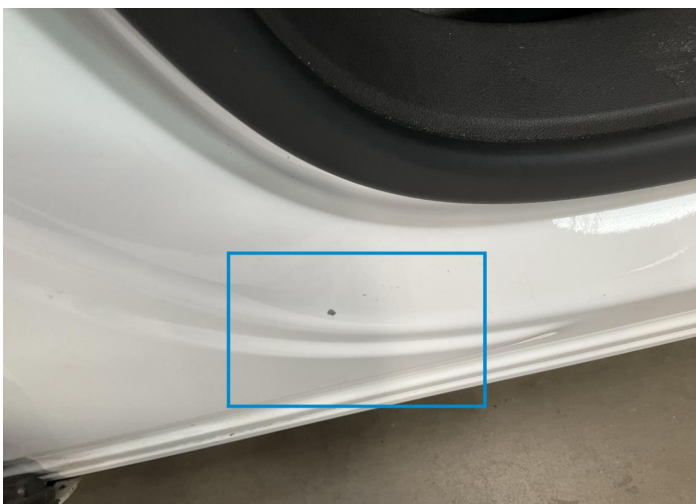
0 Schäden



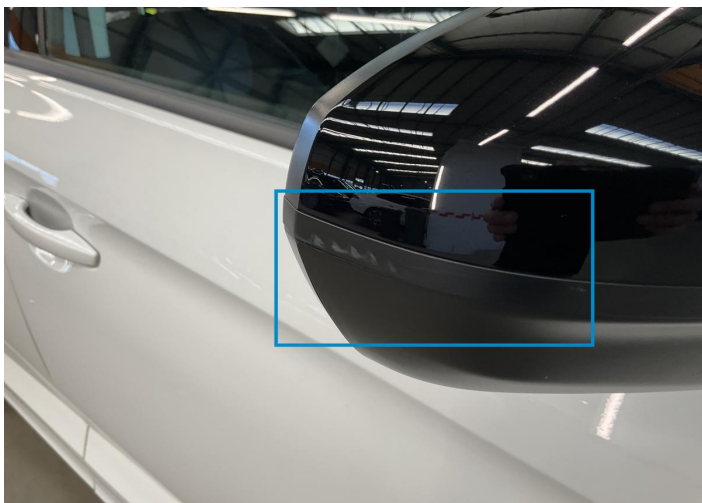
Component		Damage	Comments
1	Tailgate	Paint / Scratch / Scuff	
2	Pillar / Front Right	Paint / Scratch / Scuff	
3	Mirror Shell / Front Right	Paint / Scratch / Scuff	
4	Hood	Bodywork / Dent / Dent	



1. Tailgate  
Paint / Scratch / Scuff -



2. Pillar / Front Right  
Paint / Scratch / Scuff -



3. Mirror Shell / Front Right  
Paint / Scratch / Scuff -



4. Hood  
Bodywork / Dent / Dent -



## Mechanical Condition

### Control Lights

ABS Warning Light	✓	ESP Fault/Traction Control Malfunction Light	✓
Diesel Particulate Filter Light	✓	Airbag Warning Light	✓
Oil Pressure Warning Light	✓	Brake Warning Light	✓
Power Steering Warning Light	✓	Alternator / Battery	✓
No Dashboard Lights	✓	Display Defect	✓
Service Light	✓	Tire Pressure Monitoring System	✓

### Engine

Engine Status / EML	✓	Engine Leak Visible	✓
Engine Starts	✓		

### Gearbox

Gear Box	✓
----------	---

### Levels

Brakes Fluid	✓	Coolant Fluid	!
--------------	---	---------------	---

### Equipments Test

Central Locking	✓	Main & Spare Keys Functioning	✓
Electric Windows	✓	Navigation System	✓
Audio Equipment	✓	Parking Sensors / Cameras Functioning	✓
AC / Heating System	✓		



Test Drive Inspection

Steering Wheel

Steering | Noise / Anomaly

Engine

Engine Noise The Gears Scratch / Skip / Abnormal Operation

Fume Quantity Power Loss

Brake

Brake System Anomaly

General

Test Driven Status

No troubles detected, good condition or correct tests, according to vehicle age and mileage

Damages or malfunction detected that requires repairs by the buyer

Not applicable

Not tested

Disclaimer

Please also note the "UserGuide condition report", which shows the scope of the vehicle description. [User Guide](#)