



Expertise

Protocol number: 41630885
Order No. / Reference: 25250099
Inspection date: 18 Sept 2025

Manufacturer: Opel	Model: Grandland X Plug-in-Hybrid4 1.6 DI Start/Stop Aut Ultimate
VIN: W0VZ45GB2MS062550	



Vehicle details	
Manufacturer / Type / Model / Equipment	
Opel Grandland X Plug-in-Hybrid4 1.6 DI Start/Stop Aut Ultimate	
Vehicle Identification number	W0VZ45GB2MS062550
Mileage (Read)	109,635 km
First registration	22 Jul 2021
Number of holders	1
Next periodical technical inspection	08/2026 (Report not on hand)
Power / Engine displacement	147 kw / 1,598 ccm
Fuel type / Cylinder	Hybr.B/E ext. edition / 4
Gearbox / Number of gears	Automatic / 8
Type of drive	All-wheel drive
Type of vehicle	SUV
Colour / colour code	TYPE HABILLAGE EXTERIEUR METALLISEE VERNIS
Doors / Seats	5 / 5
Upholstery type	Leather
Colour of upholstery	Black



Vehicle details

Maintenance booklet / proof	digital proof / complete	Next maintenance in	28,120 km
Last maintenance on / at	07/2025 at 107,767 km		
Key is / should be	2 / 2	FZG documents	ZB#2 (B) was available (copy), ZB#1 (S) was not available
		Letter No.	FX016176
Previous damage / Accident	Detectable	Repainting	Detectable
Inspection conditions	sufficient	Lifting equipment / pit	yes
Test drive	Not performed	Engine function test	Performed
Manufacturer key number/ type code number	1844 / AKO 00027		
Emission standard	EURO6;WLTP;AP;PI/CI; M, N1 I	Fine dust sticker	
Permitted total weight	2,350 kg	Empty weight	

Tyres

Mounted tyres

#	Tyre size	Type of tyre	Manufacturer	Tread depth
1)	205/55 R19 97V	Summer tyres on Light alloy	Michelin	3mm / 3mm
2)	205/55 R19 97V	Summer tyres on Light alloy	Continental	5mm / 5mm

Additional tyres

#	Tyre size	Type of tyre	Manufacturer	Tread depth
1)	225/55 R18 102V	Winter tyres on Light alloy	Pirelli	3mm / 3mm
2)	225/55 R18 102V	Winter tyres on Light alloy	Pirelli	3mm / 3mm

Legend: Tread depth information for tires on the left is in the first place, for tires on the right is in the second place on the axle in the direction of travel

Equipment

Standard equipment

- 12 V equipment
- Storage compartments
- Airbag driver and passenger side
- Airbag: Head airbags, front and rear outside
- All-wheel drive Electric
- Exterior mirrors, electrically folding
- Hill Start Assist
- Braking system: Regenerative
- Roof design line in chrome
- Decorative strips, Toba Grey
- Electric parking brake
- Electronic Stability Program Plus (ESP Plus)
- Forward collision warning with automatic emergency braking and pedestrian detection
- Transmission: 8-speed automatic
- Interior equipment
- Child safety lock in the rear doors, manual
- Automatic climate control two-zone
- Front headrests, height adjustable
- Leather steering wheel including remote control
- Steering wheel: flattened, with shift paddles
- Center armrest, movable, front, including storage compartment and cup holder
- Onboard charger
- Park & Go Premium
- Upholstery: Leather
- Radio accessories: Digital radio reception DAB+
- Wheels: Light alloy 7 J x 19 with multi-spokes in BiColor
- Keyless locking and starting system "Keyless Open & Start"
- Seat belts
- Seats: 5 seats
- Seats: Seat heating, multi-stage, driver and front passenger
- Start/Stop system
- 12-volt socket in the rear center console and in the luggage compartment
- Traffic sign recognition
- Preparation for ISOFIX child seat fastening system, including Top Tether attachment eyes, rear outside
- tinted thermal insulation glazing
- Low beam automatically
- Adaptive Driving Light AFL with LED technology
- Airbag: Chest-pelvis side airbags, driver and front passenger
- Anti-lock braking system (ABS) with cornering brake control and brake assist
- On-board computer
- Roof and exterior mirrors in Diamond Black
- Roof rails, silver
- tachometer
- Electronic brake force distribution (EBD)
- Electric windows front and rear
- Luggage compartment cover
- Cruise control with intelligent speed limiter
- Rear window wiper
- Interior lighting, front and rear, with reading light front and rear
- Headrests (3) rear, height adjustable
- LED headlights
- Steering wheel, height and length adjustable
- Make-up mirrors in both sun visors, illuminated
- Mode 2 charging cable
- Fog light
- Gasoline particulate filter
- Parking pilot, front and rear parking aid
- Radio: Navi 5.0 IntelliLink with 8" touchscreen color display
- Tire pressure warning
- Wheels: Tire repair kit
- Service interval display
- Power steering, speed-dependent
- Visual equipment
- Seats: Premium ergonomic seats with AGR seal of approval, driver and front passenger (plug-in hybrid)
- Solar Protect thermal insulation glazing
- socket, 12 volts
- Blind spot warning
- Underbody protection look, front and rear, in silver
- Lashing eyes in the luggage compartment (4)
- Immobiliser
- Windshield Partially heated
- Central locking with radio remote control and interior switches

Extra equipment

- 230 V equipment (230 V socket on the center console, rear - 12 V socket in the luggage compartment)
- Paintwork: Metallic special color
- Onboard charger (vehicle-integrated charging unit, 1-phase (max. 7.4 kW/32 A))
- Removable trailer coupling (trailer stability program)
- Automatic speed assistant with stop function (Automatic speed assistant maintains the set speed and the selected distance (close, medium, far) to the vehicle in front through automatic braking intervention or automatic acceleration (activation from 30 km/h to 180 km/h))



Brief expert findings

Documents submitted	At the time of the inspection, the registration certificate Part 2 (letter) was available, but the registration certificate Part 1 (certificate) was not. (Copy)
VIN comparison	The vehicle identification number (VIN) was read from the vehicle and its conformity with the submitted documents was verified during the inspection by the undersigned.
Inspection	The inspection conditions were sufficient for the assessment of the vehicle. Lifting equipment and a pit were available for examining the vehicle.
Test drive	No test drive/maneuvering was carried out during the inspection of the vehicle.
Engine function test	An engine test run was performed.

Value reducing factors

No.	Component group	Description
1	Misc.	Main inspection - No evidence - No deduction
2	Equipment	Tirefit filler - Empty - Replace
3	Mudguard - left side	Wheel well extension - Scratch(es) - Loss in value
4	Door - front left side	Brightware - lower - Scratch(es) - Loss in value
5	Body	Underbody panelling - Broken / torn - Replace
6	Seat - front	Seat cover - left side - Broken / torn - Replace

Wear and tear

No.	Component group	Description
1	Bonnet	Bonnet - Stone chips - No deduction
2	Boot lid / rear door	Boot lid - Scratch(es) - No deduction

The vehicle shows signs of wear commensurate with its age and use.

Previous damages

No.	Previous damage	Extent of damage (Net)
1	Rear, Side right, Provided by user / customer, from 10 Nov 2023	1.701,35 €
2	Side - left, Provided by user / customer, from 17 Nov 2024	5.060,09 €

Repainting

No.	Repainting
1	Side panel - rear left side, Professionally carried out, Invoice of repair done Non-existent
2	Side panel - rear right side, Professionally carried out, Invoice of repair done Non-existent
3	Door - rear left side, Professionally carried out, Invoice of repair done Non-existent
4	Door - rear right side, Professionally carried out, Invoice of repair done Non-existent
5	Door - front left side, Professionally carried out, Invoice of repair done Non-existent

Paint coat thickness measurement

Side panel - rear left side	155 µm	Side panel - rear right side	163 µm
Door - rear left side	216 µm	Door - rear right side	162 µm
Door - front left side	146 µm		



Order/Scope of order

The order was placed to prepare a sales report for the vehicle described. This includes the following:

- Description of core relevant information about the vehicle
- Documentation of equipment features
(*Delivery by third-party service providers*)
- Documentation of damage, defects, missing parts
- Documentation of previous damage, unrepaired previous damage, repainting
- a brief visual or functional inspection of the equipment details if possible.
(*Functional tests of driver assistance systems are not included in the scope of services!*)
- a photo documentation of the vehicle

Basis for the order

This product is based on the Alphabet Fuhrpark GmbH guidelines for vehicle returns and valuations. The expert makes the explicit findings in each individual case objectively within the framework of the specified standards based on his or her own expertise.

The vehicle inspection takes place in a disassembled state.

Damage or defects that can only be detected during disassembly/diagnosis work or through advanced knowledge remain within the scope of the prognosis risk. An extended risk exists for concealed defects caused by fraudulent deception and not identifiable by the expert.

Damage or defects resulting from normal use or wear and tear of the vehicle will be accepted according to the applicable standard.

There was no explicit identification or monetary consideration of the expected features within the product.

Features which in their nature and severity slightly exceed normal use but do not constitute unacceptable damage will be documented and identified under signs of use if necessary.

Damage or defects which, according to the underlying standard, can no longer be attributed to normal use or wear and tear are listed in the product under "Depreciating Factors".

Depending on the product specification, a monetary ID can be provided. If this takes place, the costs can be 100% d or pro rata depending on the vehicle's age and mileage.

Previous damages

According to available information previous damages were repaired at the vehicle. Traces of repairs, which allow conclusions about the area of repair, were not recognizable during the inspection.

Comments

Der beiliegende Winterradsatz ist nicht Bestandteil der vorliegenden Fahrzeugausstattung.



Figure 1: Diagonal front (left)



Figure 2: Diagonal front (right)



Figure 3: Diagonal rear (left)



Figure 4: Diagonal rear (right)



Figure 5: Interior - front



Figure 6: Interior - rear



Figure 7: Instrument cluster



Figure 8: Instrument panel



Figure 9: Interior 360° view ([Online link](#))



Figure 10: Cargo area

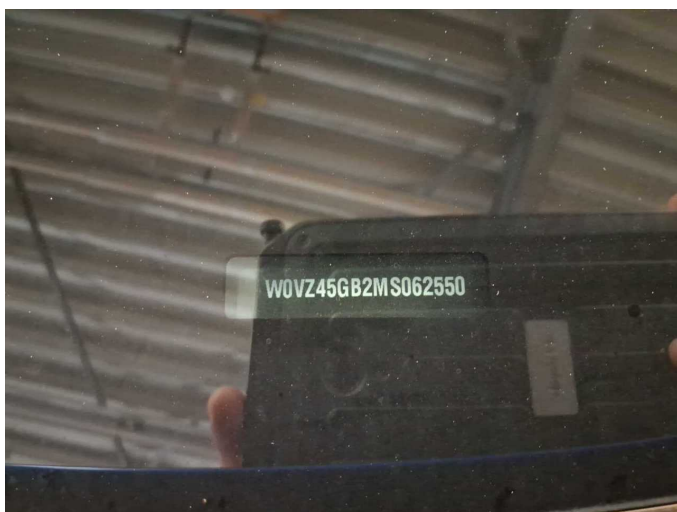


Figure 11: VIN



Figure 12: Mounted tyres

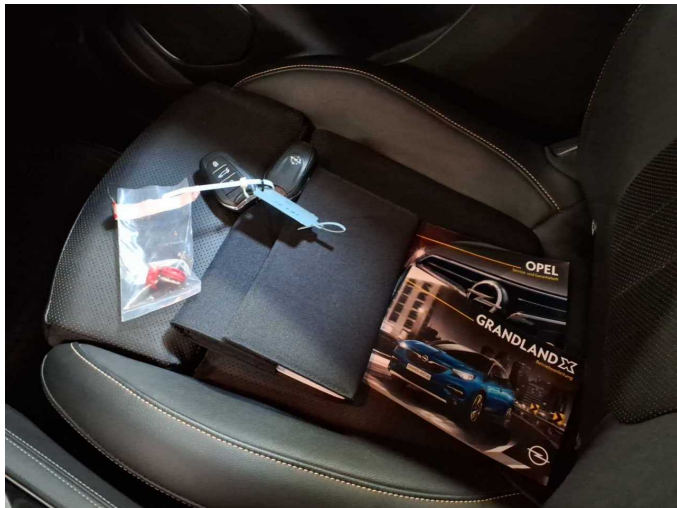


Figure 13: Documents

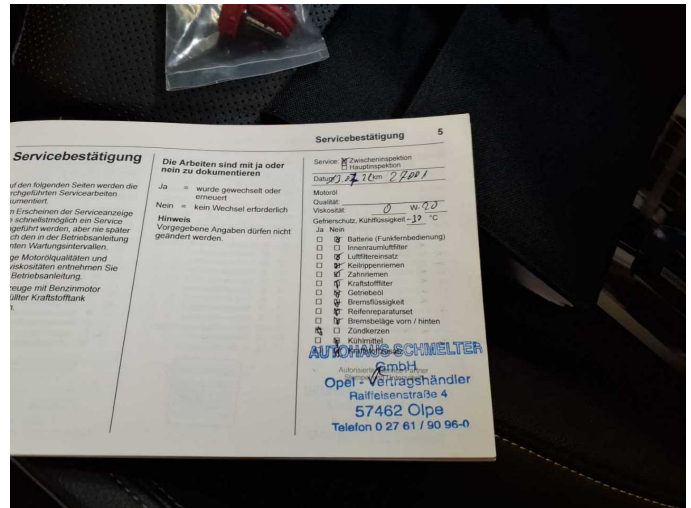


Figure 14: Documents

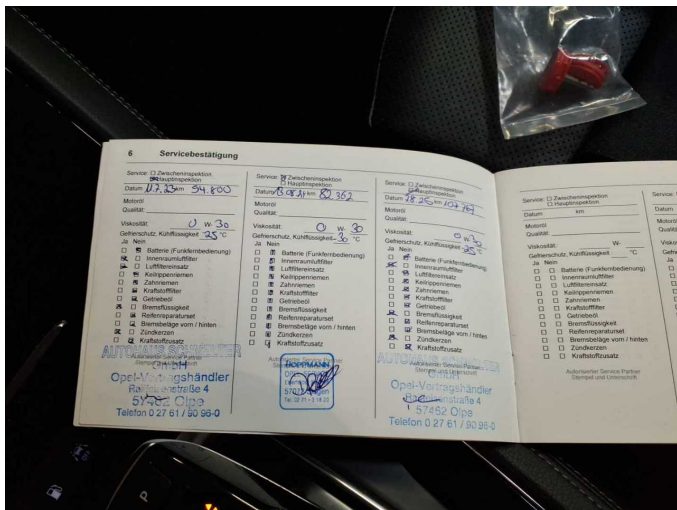


Figure 15: Documents



Figure 16: Additional tyres



Figure 17: Navigation



Figure 18: Misc.



Figure 19: Misc.



Figure 20: Misc.

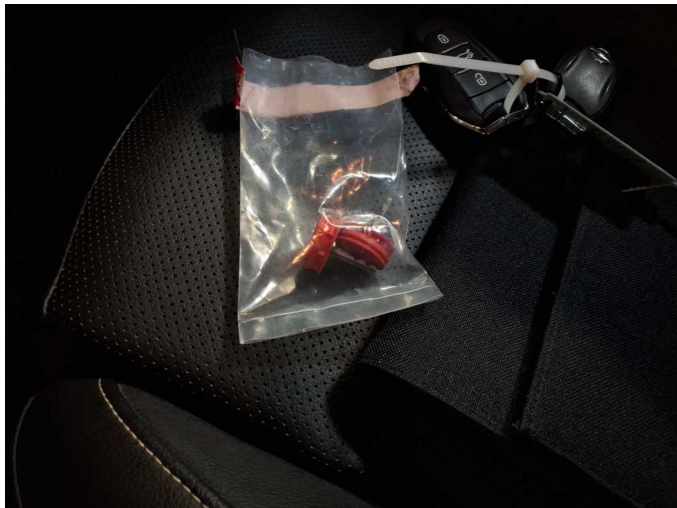


Figure 21: Misc.



Figure 22: Misc.



Figure 23: Misc.



Figure 24: Misc.



Figure 25: Misc.



Figure 26: Misc.



Figure 27: Misc.



Figure 28: Misc.

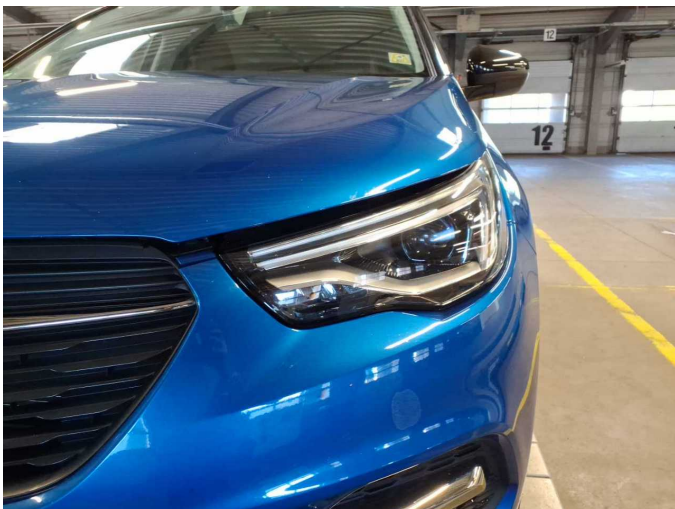


Figure 29: Misc.

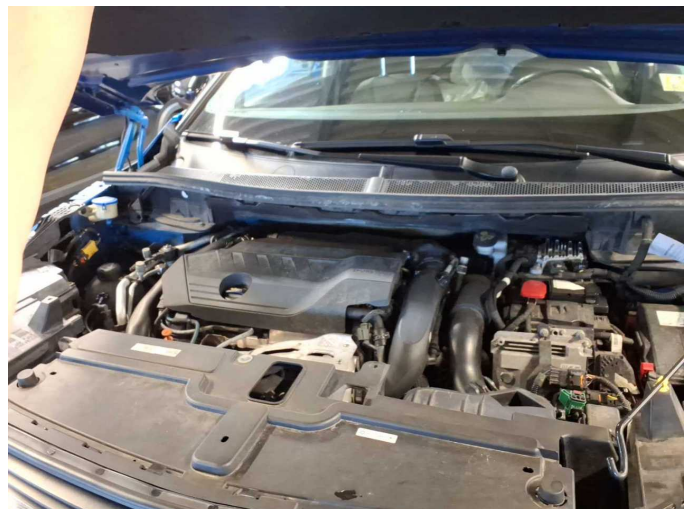


Figure 30: Misc.



Figure 31: Misc.



Figure 32: Misc.

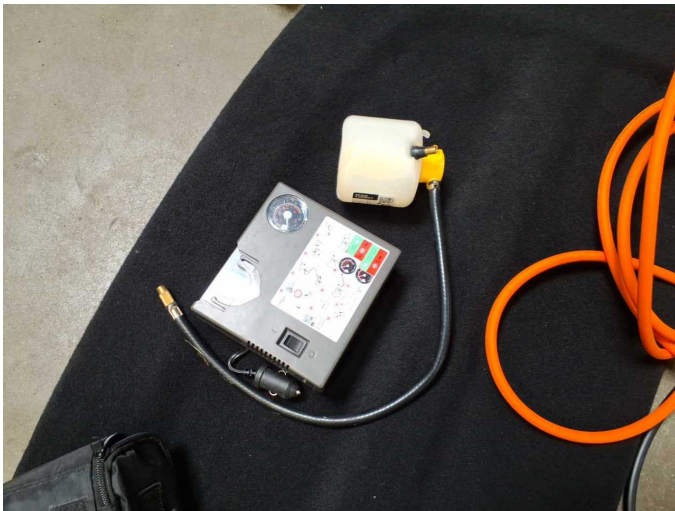


Figure 33: Misc.



Figure 34: Misc.



Damage 2: Equipment: Tirefit filler - Empty - Replace



Damage 3: Mudguard - left side: Wheel well extension - Scratch(es) - Loss in value



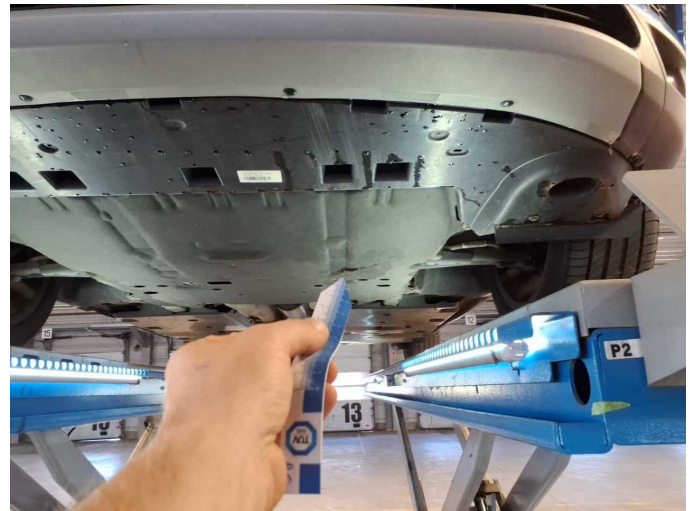
Damage 3: Mudguard - left side: Wheel well extension - Scratch(es) - Loss in value



Damage 4: Door - front left side: Brightware - lower - Scratch(es) - Loss in value



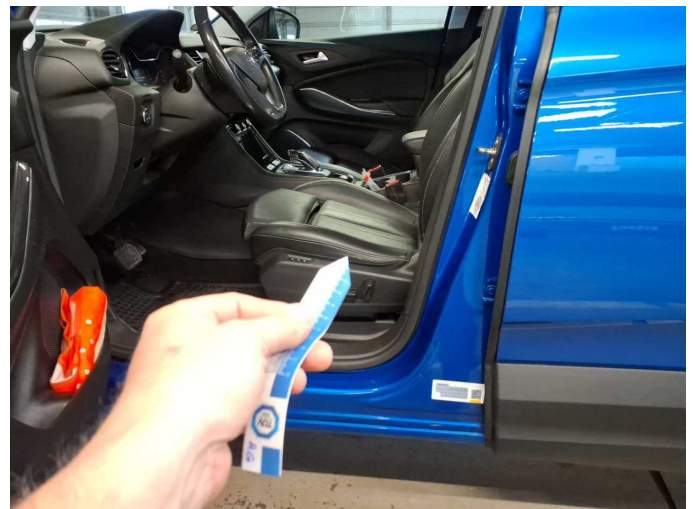
Damage 4: Door - front left side: Brightware - lower - Scratch(es) - Loss in value



Damage 5: Body: Underbody panelling - Broken / torn - Replace



Damage 5: Body: Underbody panelling - Broken / torn - Replace



Damage 6: Seat - front: Seat cover - left side - Broken / torn - Replace



Damage 6: Seat - front: Seat cover - left side - Broken / torn - Replace



Repainting 1: Side panel - rear left side



Repainting 2: Side panel - rear right side



Repainting 3: Door - rear left side



Repainting 4: Door - rear right side



Repainting 5: Door - front left side



Wartungshistorie

(gemäß Auftraggeber Informationen)

Fahrgestellnummer: W0VZ45GB2MS062550
Hersteller / Modell: OPEL OPEL Grandland X Plug-in-Hybrid4 1.6 DI Start/Stop Aut Ultimate

Datum	KM-Stand	Beschreibung
22.07.2025	107.767	Batterie ern; Bremsflüssigkeit; Bremsflüssigkeit ern; Motoröl b. Wartung; Ölfilter ern; Regelwartungsdienst; Wartung Sonstiges; Zündkerzen ern
09.07.2025	107.747	Ladeluftschlauch ern; Reparatur Sonstiges; Systemtest/Eigendiagnose; Turbolader ern
22.05.2025	104.744	Reparatur Sonstiges; Systemtest/Eigendiagnose
07.10.2024	84.559	Bremsscheiben + Klötze h
14.08.2024	82.362	AU; Motoröl b. Wartung; Ölfilter ern; Regelwartungsdienst; Wartung Sonstiges
12.04.2024	74.454	Batterie ern; Reparatur Sonstiges; Systemtest/Eigendiagnose
06.10.2023	62.067	Reparatur Sonstiges
10.07.2023	54.800	Bremsflüssigkeit; Bremsflüssigkeit ern; Luftfiltereinsatz ern; Motoröl b. Wartung; Ölfilter ern; Regelwartungsdienst; Wartung Sonstiges; Zündkerzen ern
13.07.2022	27.001	Motoröl b. Wartung; Ölfilter ern; Regelwartungsdienst; Wartung Sonstiges