



Expertise

Protocol number: 41602210
Order No. / Reference: 25172488
Inspection date: 15 Sept 2025

Manufacturer: Opel

Model: Combo Cargo XL 1.5 D EHZ Edition

VIN: W0VEFYHYCMJ758715



Vehicle details	
Manufacturer / Type / Model / Equipment	
Opel Combo Cargo XL 1.5 D EHZ Edition	
Vehicle Identification number	W0VEFYHYCMJ758715
Mileage (Read)	63,097 km
First registration	28 Jul 2021
Number of holders	1
Power / Engine displacement	75 kw / 1,499 ccm
Fuel type / Cylinder	Diesel / 4
Gearbox / Number of gears	Manual / 5
Type of drive	Front drive
Type of vehicle	Van
Colour / colour code	Jade Weiß
Doors / Seats	4 / 2
Upholstery type	Cloth
Colour of upholstery	Black-Grey



Vehicle details

Maintenance booklet / proof	digital proof / complete	Next maintenance in	26,680 km
Last maintenance on / at	08/2023 at 41,398 km		
Key is / should be	2 / 2	FZG documents	ZB#2 (B) was available (copy), ZB#1 (S) was not available
		Letter No.	GA239533
Previous damage / Accident	Detectable	Repainting	Detectable
Inspection conditions	sufficient	Lifting equipment / pit	yes
Test drive	Not performed	Engine function test	Performed
Manufacturer key number/ type code number	1844 / AIQ 00635		
Emission standard	EURO6;WLTP;AN;PI/CI; N1 II	Fine dust sticker	
Permitted total weight	2,355 kg	Empty weight	

Tyres

Mounted tyres

#	Tyre size	Type of tyre	Manufacturer	Tread depth
1)	215/65 R16 98H	All-season tyres on Steel rim with wheel cover	Sonstige	5mm / 5mm
2)	215/65 R16 98H	All-season tyres on Steel rim with wheel cover	Sonstige	6mm / 6mm

Replacement

Typ	Tyre size	Type of tyre	Manufacturer	Tread depth
	Tirefit	Expiration date 03/2026		

Legend: Tread depth information for tires on the left is in the first place, for tires on the right is in the second place on the axle in the direction of travel



Equipment

Standard equipment

- | | |
|--|---|
| <ul style="list-style-type: none"> • Cover strip sliding door rail • ABS including brake assist and adaptive brake light • Anti-lock braking system (ABS) with cornering brake control and brake assist • Exterior mirror housings in body color • Battery discharge protection • Floor covering: cargo area floor, painted • Diesel particulate filter, maintenance-free • Three-point seat belts on all seats • Electronic Stability Program (ESP Plus) • Speed limiter • Transmission: 5-speed transmission • Air conditioning, front, with particle and odor filter • Headrests (2), front, height-adjustable • Steering column, length and height adjustable • Upholstery: Cloth • Wheels: Tire repair kit • Side impact protection • Power steering, speed-dependent • Seats: Driver's seat 6-way adjustable, length, height and backrest angle • Traction control with engine and brake intervention (TC Plus) • Lashing eyes (6) in the cargo area • Heat-insulating glazing, tinted • Central locking: ignition keys (2), one of which is foldable | <ul style="list-style-type: none"> • Storage compartments (Edition) • Driver's side airbag • Automatic low beam • Exterior mirrors, electrically adjustable, heated and manually folding • Hill Start Assist • On-board computer • tachometer • Third brake light • Electric windows, front • Cruise control • Rear wing doors, asymmetrically divided, sheet metal, 180° opening angle • Paint finish: Solid paint • Parking pilot, rear • Radio BT with Graphic Info Display • Wheels: Steel wheels 6.5 J x 16 • Side protection strips • Seats: Passenger single seat, fixed • 12 volt socket in the center console • Daytime running light • Partition wall, closed • Doors: Sliding door, passenger side, sheet metal • Immobiliser • Central locking with radio remote control |
|--|---|

Extra equipment

- | | |
|--|--|
| <ul style="list-style-type: none"> • All-season tyres • Package: Professional (folding passenger bench seat with storage table, movable on the backrest of the middle seat of the passenger bench seat - seat belt warning, single passenger seat - electric parking brake - FlexCargo partition, without window, with through-loading function below the passenger bench seat - wooden floor in the cargo area) | <ul style="list-style-type: none"> • Package: Grip & Go (IntelliGrip (Adaptive Traction System with 5 selectable modes): - ESP off - ESP standard - Snow mode - Mud mode - Sand mode - Hill Descent Assist - Underbody protection under the engine, metal - Rough-road tires 215/65 R 16 SL 98H - Raised suspension) • FlexCargo partition with window (with through-loading function below the passenger double seat including protective bag for the load - interior rearview mirror, manually dimmable) |
|--|--|

Brief expert findings

Documents submitted	At the time of the inspection, the registration certificate Part 2 (letter) was available, but the registration certificate Part 1 (certificate) was not. (Copy)
VIN comparison	The vehicle identification number (VIN) was read from the vehicle and its conformity with the submitted documents was verified during the inspection by the undersigned.
Inspection	The inspection conditions were sufficient for the assessment of the vehicle. Lifting equipment and a pit were available for examining the vehicle.
Test drive	No test drive/maneuvering was carried out during the inspection of the vehicle.
Engine function test	An engine test run was performed.

Value reducing factors



No.	Component group	Description
1	Instrument panel	Indicator light (Servicekontrolle, unplausibel) - on - Perform diagnosis
2	Sill - left side	Sill - Scratched - Smart repair
3	Seat - front	Seat cover - left side - Holes - Replace

Wear and tear

No.	Component group	Description
1	Side panel - rear left side	Side panel - dent(s) - No deduction

The vehicle shows signs of wear commensurate with its age and use.

Accident damages

No.	Accident
1	Front, Side - left

Repainting

No.	Repainting
1	Door - rear right side, Professionally carried out, Invoice of repair done Non-existent

Paint coat thickness measurement

Door - rear right side	149 µm
------------------------	--------

Order/Scope of order

The order was placed to prepare a sales report for the vehicle described. This includes the following:

- Description of core relevant information about the vehicle
- Documentation of equipment features
(*Delivery by third-party service providers*)
- Documentation of damage, defects, missing parts
- Documentation of previous damage, unrepaired previous damage, repainting
- a brief visual or functional inspection of the equipment details if possible.
(*Functional tests of driver assistance systems are not included in the scope of services!*)
- a photo documentation of the vehicle



Basis for the order

This product is based on the guidelines for vehicle returns and valuations of light commercial vehicles from Alphabet Fuhrparkmanagement GmbH. The expert makes the explicit findings in each individual case objectively within the framework of the specified standards based on his or her own expertise.

The vehicle inspection takes place in a disassembled state.

Damage or defects that can only be detected during disassembly/diagnosis work or through advanced knowledge remain within the scope of the prognosis risk. An extended risk exists for concealed defects caused by fraudulent deception and not identifiable by the expert.

Damage or defects resulting from normal use or wear and tear of the vehicle will be accepted according to the applicable standard.

There was no explicit identification or monetary consideration of the expected features within the product.

Features which in their nature and severity slightly exceed normal use but do not constitute unacceptable damage will be documented and identified under signs of use if necessary.

Damage or defects which, according to the underlying standard, can no longer be attributed to normal use or wear and tear are listed in the product under "Depreciating Factors".

Depending on the product specification, a monetary ID can be provided. If this takes place, the costs can be 100% d or pro rata depending on the vehicle's age and mileage.

Previous damages

Non-repaired previous damages were found at the vehicle. The necessary repair costs are listed in the expert report or if necessary, are listed in detail in a separately enclosed repair cost calculation.

Comments

Die beigefügte Reparaturkostenkalkulation wurde nach bestem Wissen und Gewissen unter eingeschränkten Besichtigungsbedingung im demontagefreien Zustand und dem vorliegendem Bildmaterial erstellt. Es können aufgrund verdeckter Beschädigung erhebliche Mehrkosten und somit Abweichung der für den Unfall ausgewiesenen Reparaturkosten nicht ausgeschlossen werden.



Figure 1: Diagonal front (left)



Figure 2: Diagonal front (right)



Figure 3: Diagonal rear (left)



Figure 4: Diagonal rear (right)



Figure 5: Interior - front



Figure 6: Interior - rear



Figure 7: Instrument cluster



Figure 8: Instrument panel



Figure 9: Interior 360° view ([Online link](#))



Figure 10: Cargo area

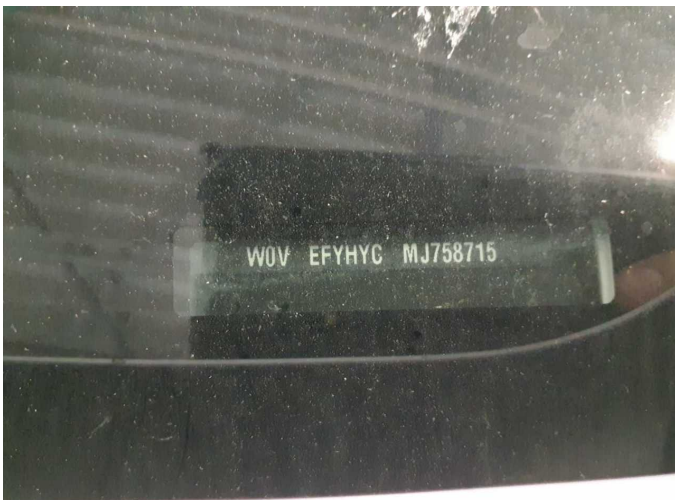


Figure 11: VIN



Figure 12: Mounted tyres



Figure 13: Documents



Figure 14: Navigation



Figure 15: Misc.



Figure 16: Misc.



Figure 17: Misc.



Figure 18: Misc.



Figure 19: Misc.



Figure 20: Misc.



Figure 21: Misc.



Figure 22: Misc.



Figure 23: Misc.

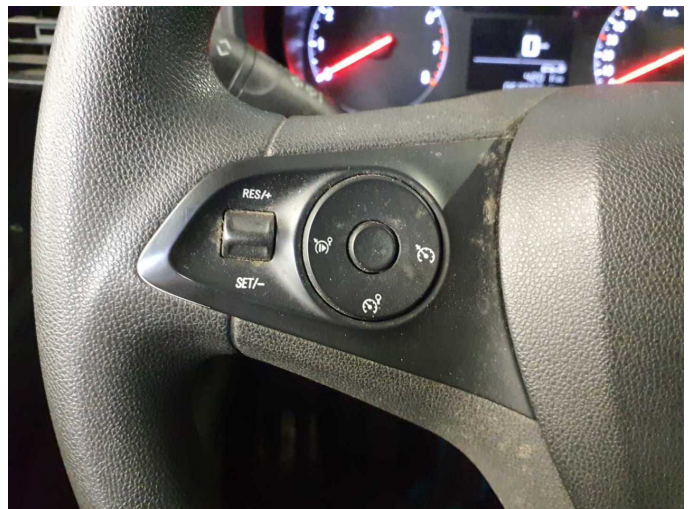


Figure 24: Misc.



Figure 25: Misc.



Figure 26: Misc.



Figure 27: Misc.



Damage 1: Instrument panel: Indicator light (Servicekontrolle, unplausibel) - on - Perform diagnosis



Damage 1: Instrument panel: Indicator light (Servicekontrolle, unplausibel) - on - Perform diagnosis



Damage 2: Sill - left side: Sill - Scratched - Smart repair



Damage 2: Sill - left side: Sill - Scratched - Smart repair



Damage 3: Seat - front: Seat cover - left side - Holes - Replace



Damage 3: Seat - front: Seat cover - left side - Holes - Replace



Accident 1: Front, Side - left



Accident 1: Front, Side - left



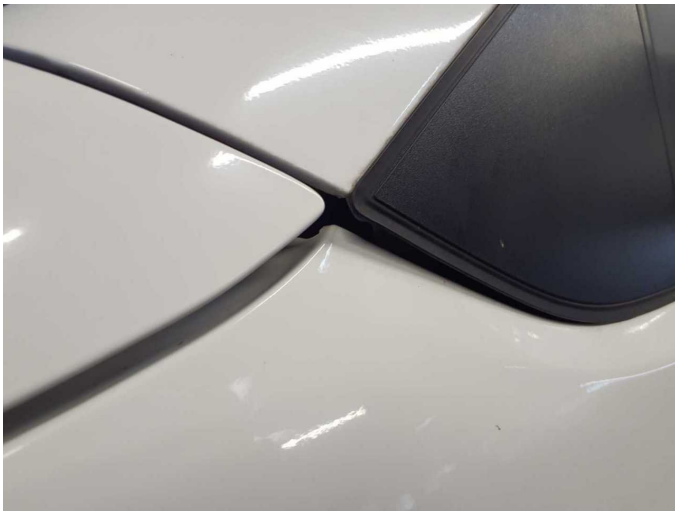
Accident 1: Front, Side - left



Accident 1: Front, Side - left



Accident 1: Front, Side - left



Accident 1: Front, Side - left



Accident 1: Front, Side - left



Accident 1: Front, Side - left



Accident 1: Front, Side - left



Accident 1: Front, Side - left



Accident 1: Front, Side - left



Accident 1: Front, Side - left



Accident 1: Front, Side - left



Repainting 1: Door - rear right side



Repainting 1: Door - rear right side



Wartungshistorie

(gemäß Auftraggeber Informationen)

Fahrgestellnummer: W0VEFYHYCMJ758715

Hersteller / Modell: OPEL OPEL Combo Cargo XL 1.5 D EHZ Edition

Datum	KM-Stand	Beschreibung
04.09.2025	63.096	Batterie ern; Systemtest/Eigendiagnose
19.12.2023	48.328	Reparatur Sonstiges
04.08.2023	41.398	Bremsflüssigkeit; Bremsflüssigkeit ern; Kraftstofffilter ern; Luftfiltereinsatz ern; Motoröl b. Wartung; Ölfilter ern; Regelwartungsdienst; Wartung Sonstiges
10.07.2023	39.848	HU + AU
23.06.2023	38.705	Bremsscheiben + Klötze v