



Expertise

Protocol number: 41262937
Order No. / Reference: 25085143
Inspection date: 26 Aug 2025

Manufacturer: Opel

Model: Combo Cargo XL 1.5 D EHZ Edition

VIN: W0VEFYHYCMJ523722



Vehicle details	
Manufacturer / Type / Model / Equipment	
Opel Combo Cargo XL 1.5 D EHZ Edition	
Vehicle Identification number	W0VEFYHYCMJ523722
Mileage (Read)	73,011 km
First registration	13 Apr 2021
Number of holders	1
Power / Engine displacement	75 kw / 1,499 ccm
Fuel type / Cylinder	Diesel / 4
Gearbox / Number of gears	Manual / 5
Type of drive	Front drive
Type of vehicle	Van
Colour / colour code	Jade Weiß
Doors / Seats	4 / 3
Upholstery type	Cloth
Colour of upholstery	Black



Vehicle details

Maintenance booklet / proof	digital proof / complete	Next maintenance in	28,440 km
Last maintenance on / at	04/2023 at 40,399 km		
Key is / should be	2 / 2	FZG documents	ZB#2 (B) was available (copy), ZB#1 (S) was not available
		Letter No.	FW977354
Previous damage / Accident	None detectable	Repainting	Detectable
Inspection conditions	sufficient	Lifting equipment / pit	yes
Test drive	Not performed	Engine function test	Performed
Manufacturer key number/ type code number	1844 / AIQ 00503		
Emission standard	EURO6;WLTP;AN;PI/CI; N1 II	Fine dust sticker	
Permitted total weight	2,355 kg	Empty weight	

Tyres

Mounted tyres

#	Tyre size	Type of tyre	Manufacturer	Tread depth
1)	215/65 R16 98H	All-season tyres on Steel rim with wheel cover	Falken	5mm / 5mm
2)	215/65 R16 102V	All-season tyres on Steel rim with wheel cover	Kumho	6 mm
	215/65 R16 98H	All-season tyres on Steel rim with wheel cover	Vredestein	4 mm

Replacement

Typ	Tyre size	Type of tyre	Manufacturer	Tread depth
	Tirefit	Expiration date 09/2025		

Legend: Tread depth information for tires on the left is in the first place, for tires on the right is in the second place on the axle in the direction of travel



Equipment

Standard equipment

- | | |
|--|--|
| <ul style="list-style-type: none"> • Cover strip sliding door rail • ABS including brake assist and adaptive brake light • Anti-lock braking system (ABS) with cornering brake control and brake assist • Exterior mirror housings in body color • Battery discharge protection • Floor covering: cargo area floor, painted • Diesel particulate filter, maintenance-free • Three-point seat belts on all seats • Electronic Stability Program (ESP Plus) • Speed limiter • Transmission: 5-speed transmission • Air conditioning, front, with particle and odor filter • Headrests (2), front, height-adjustable • Steering wheel: Comfort steering wheel (PU), flattened at the bottom • Upholstery: Cloth • Wheels: Tire repair kit (with tire sealant and 12-volt compressor (without jack)) • Side impact protection • Power steering, speed-dependent • Seats: Driver's seat 6-way adjustable, length, height and backrest angle • Traction control with engine and brake intervention (TC Plus) • Immobiliser • Central locking with radio remote control | <ul style="list-style-type: none"> • Storage compartments (Edition) • Driver's side airbag • Automatic low beam • Exterior mirrors, electrically adjustable, heated and manually folding • Hill Start Assist • On-board computer • tachometer • Third brake light • Electric windows, front • Cruise control • Heating and ventilation system with particle and odor filter, front • Paint finish: Solid paint • Steering column, length and height adjustable • Parking pilot, rear • Radio BT with Graphic Info Display • Wheels: Steel wheels 6.5 J x 16 (tires 205/60 R16 XL 96H - hub cap) • Side protection strips • Seats: Passenger single seat, fixed • 12 volt socket in the center console • Daytime running light • Doors: Sliding door, passenger side, sheet metal • Lashing eyes (6) in the cargo area • Heat-insulating glazing, tinted • Central locking: ignition keys (2), one of which is foldable |
|--|--|

Extra equipment

- | | |
|---|--|
| <ul style="list-style-type: none"> • Rear wing doors, asymmetrically split, glazed, 180° opening angle (rear window wiper - rear window heating) • Package: Professional (folding passenger bench seat with storage table, movable on the backrest of the middle seat of the passenger bench seat - seat belt warning, single passenger seat - electric parking brake - FlexCargo partition, without window, with through-loading function below the passenger bench seat - wooden floor in the cargo area) | <ul style="list-style-type: none"> • Package: Grip & Go (IntelliGrip (Adaptive Traction System with 5 selectable modes): - ESP off - ESP standard - Snow mode - Mud mode - Sand mode - Hill Descent Assist - Underbody protection under the engine, metal - Rough-road tires 215/65 R 16 SL 98H - Raised suspension) • Seats: Passenger double bench seat • FlexCargo partition with window (with through-loading function below the passenger double seat including protective bag for the load - interior rearview mirror, manually dimmable) |
|---|--|

Brief expert findings

Documents submitted	At the time of the inspection, the registration certificate Part 2 (letter) was available, but the registration certificate Part 1 (certificate) was not. (Copy)
VIN comparison	The vehicle identification number (VIN) was read from the vehicle and its conformity with the submitted documents was verified during the inspection by the undersigned.
Inspection	The inspection conditions were sufficient for the assessment of the vehicle. Lifting equipment and a pit were available for examining the vehicle.
Test drive	No test drive/maneuvering was carried out during the inspection of the vehicle.
Engine function test	An engine test run was performed.



Value reducing factors

No.	Component group	Description
1	Wheel / tyres	Wheel rim - rear right side - Deformed - Replace
2	Front bumper	Spoiler (Weiss) - Scratched - Smart repair
3	Seat - front	Backrest cover - left side - Burn hole (cigarettes) - Smart repair
4	Body	Underbody panelling (Links mitte) - Broken / torn - Replace
5	Rear bumper	Rear bumper - Scratched - Smart repair
6	Sill - left side	Sill - Scratched - Smart repair
7	Front bumper	Air-inlet grille - Broken / torn - Replace
8	Body	Underbody panelling (Aus Metall) - Missing - Replace
9	Seat - front	Seat cover - left side (inkl. Poslter) - Broken / torn - Replace

Wear and tear

No.	Component group	Description
1	Sill - right side	Sill - dent(s) - No deduction
2	Body	Body - Scratch(es) - No deduction
3	Headlight	Headlight - right side - Scratch(es) - No deduction

The vehicle shows signs of wear commensurate with its age and use.

Repainting

No. Repainting

- Side panel - rear right side, Door - rear right side, Door - front left side, Professionally carried out

Paint coat thickness measurement

Side panel - rear right side	1,570 µm	Door - rear right side	1,340 µm
Door - front left side	589 µm		

Order/Scope of order

The order was placed to prepare a sales report for the vehicle described. This includes the following:

- Description of core relevant information about the vehicle
- Documentation of equipment features
(Delivery by third-party service providers)
- Documentation of damage, defects, missing parts
- Documentation of previous damage, unrepaired previous damage, repainting
- a brief visual or functional inspection of the equipment details if possible.
(Functional tests of driver assistance systems are not included in the scope of services!)
- a photo documentation of the vehicle



Basis for the order

This product is based on the guidelines for vehicle returns and valuations of light commercial vehicles from Alphabet Fuhrparkmanagement GmbH. The expert makes the explicit findings in each individual case objectively within the framework of the specified standards based on his or her own expertise.

The vehicle inspection takes place in a disassembled state.

Damage or defects that can only be detected during disassembly/diagnosis work or through advanced knowledge remain within the scope of the prognosis risk. An extended risk exists for concealed defects caused by fraudulent deception and not identifiable by the expert.

Damage or defects resulting from normal use or wear and tear of the vehicle will be accepted according to the applicable standard.

There was no explicit identification or monetary consideration of the expected features within the product.

Features which in their nature and severity slightly exceed normal use but do not constitute unacceptable damage will be documented and identified under signs of use if necessary.

Damage or defects which, according to the underlying standard, can no longer be attributed to normal use or wear and tear are listed in the product under "Depreciating Factors".

Depending on the product specification, a monetary ID can be provided. If this takes place, the costs can be 100% d or pro rata depending on the vehicle's age and mileage.

Previous damages

Apparently, no repaired previous damage could be found on the vehicle.



Figure 1: Diagonal front (left)



Figure 2: Diagonal front (right)



Figure 3: Diagonal rear (left)



Figure 4: Diagonal rear (right)



Figure 5: Interior - front



Figure 6: Interior - rear



Figure 7: Instrument cluster



Figure 8: Instrument panel



Figure 9: interior 360° view



Figure 10: Cargo area

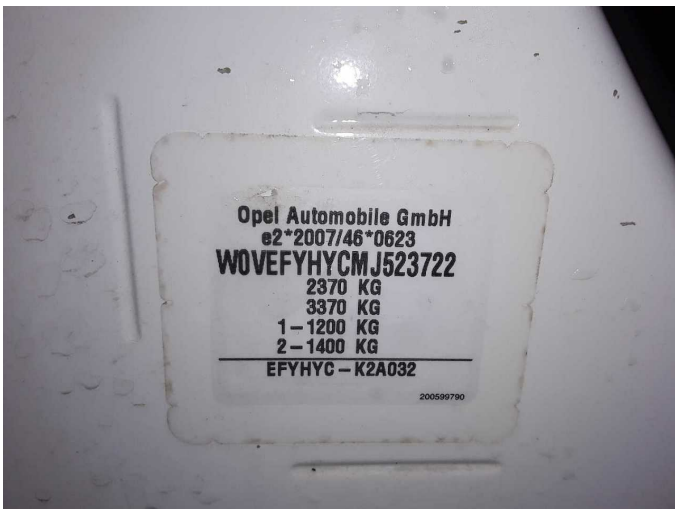


Figure 11: VIN



Figure 12: Mounted tyres

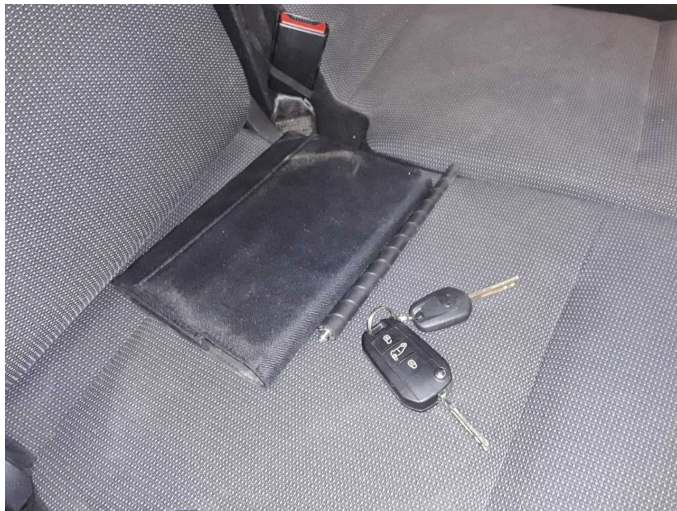


Figure 13: Documents



Figure 14: Documents

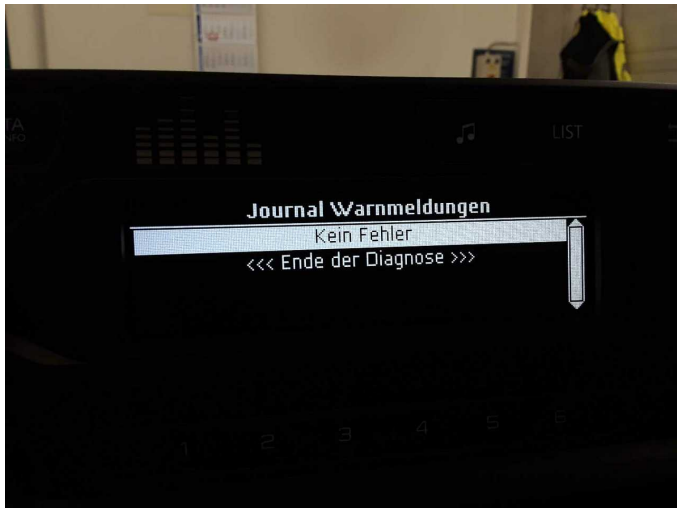


Figure 15: Documents



Figure 16: Documents



Figure 17: Misc.



Figure 18: Misc.



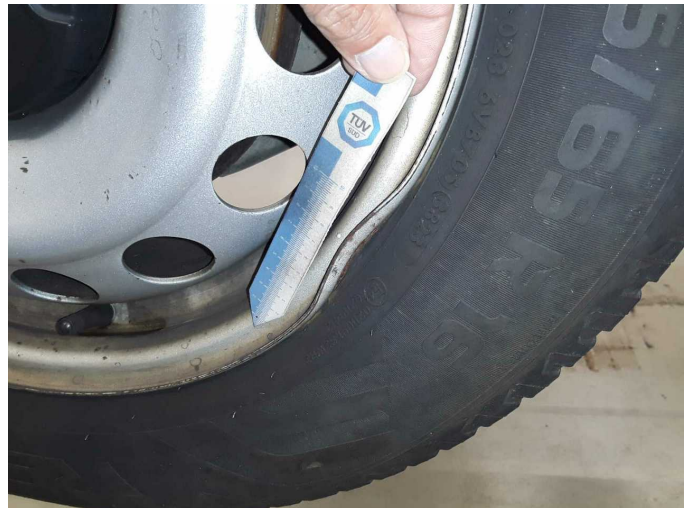
Figure 19: Misc.



Damage 1: Wheel / tyres: Wheel rim - rear right side - Deformed - Replace



Damage 1: Wheel / tyres: Wheel rim - rear right side - Deformed - Replace



Damage 1: Wheel / tyres: Wheel rim - rear right side - Deformed - Replace



Damage 2: Front bumper: Spoiler (Weiss) - Scratched - Smart repair



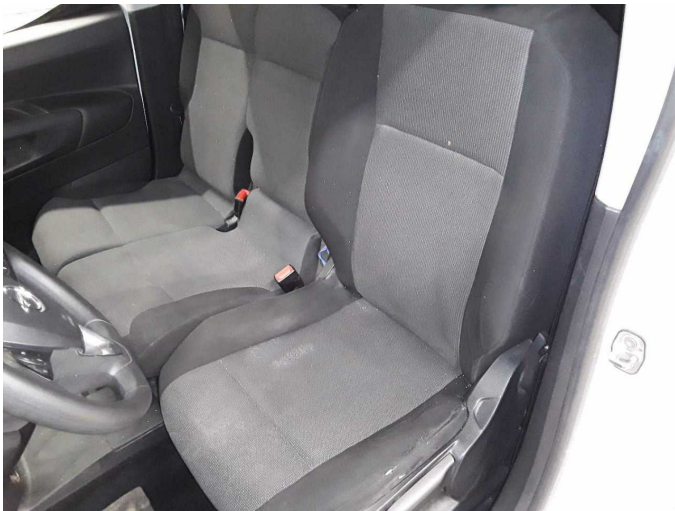
Damage 2: Front bumper: Spoiler (Weiss) - Scratched - Smart repair



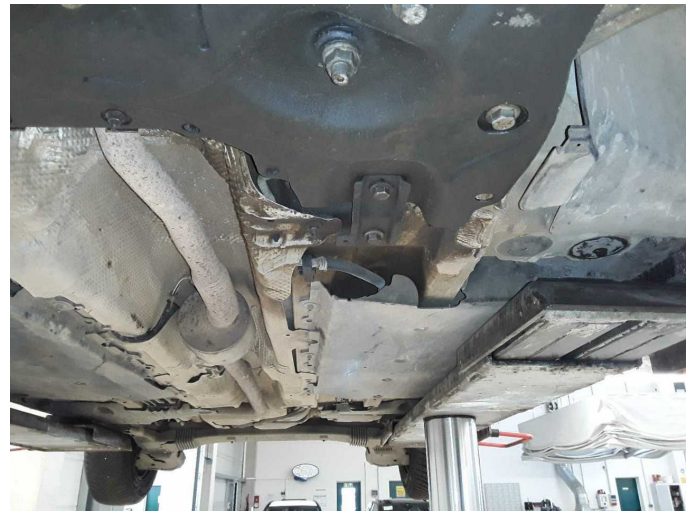
Damage 3: Seat - front: Backrest cover - left side - Burn hole (cigarettes)
- Smart repair



Damage 3: Seat - front: Backrest cover - left side - Burn hole (cigarettes)
- Smart repair



Damage 3: Seat - front: Backrest cover - left side - Burn hole (cigarettes)
- Smart repair



Damage 4: Body: Underbody panelling (Links mitte) - Broken / torn -
Replace



Damage 4: Body: Underbody panelling (Links mitte) - Broken / torn -
Replace



Damage 4: Body: Underbody panelling (Links mitte) - Broken / torn -
Replace



Damage 5: Rear bumper: Rear bumper - Scratched - Smart repair



Damage 5: Rear bumper: Rear bumper - Scratched - Smart repair



Damage 5: Rear bumper: Rear bumper - Scratched - Smart repair



Damage 6: Sill - left side: Sill - Scratched - Smart repair



Damage 6: Sill - left side: Sill - Scratched - Smart repair



Damage 7: Front bumper: Air-inlet grille - Broken / torn - Replace



Damage 7: Front bumper: Air-inlet grille - Broken / torn - Replace



Damage 7: Front bumper: Air-inlet grille - Broken / torn - Replace



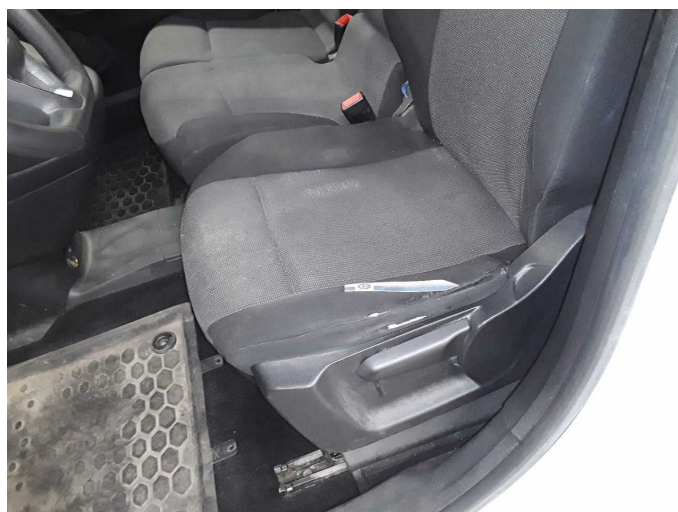
Damage 7: Front bumper: Air-inlet grille - Broken / torn - Replace



Damage 7: Front bumper: Air-inlet grille - Broken / torn - Replace



Damage 8: Body: Underbody panelling (Aus Metall) - Missing - Replace



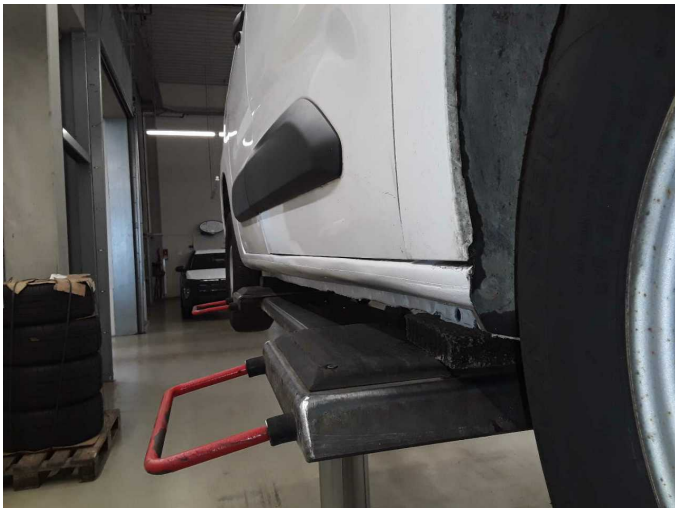
Damage 9: Seat - front: Seat cover - left side (inkl. Poslter) - Broken / torn - Replace



Damage 9: Seat - front: Seat cover - left side (inkl. Poslter) - Broken / torn - Replace



Wear and tear 1: Sill - right side: Sill - dent(s) - No deduction



Wear and tear 1: Sill - right side: Sill - dent(s) - No deduction



Wear and tear 1: Sill - right side: Sill - dent(s) - No deduction



Wear and tear 1: Sill - right side: Sill - dent(s) - No deduction



Side panel - rear right side: 1,570 µm



Side panel - rear right side: 1,570 μm



Door - rear right side: 1,340 μm



Door - rear right side: 1,340 μm



Door - front left side: 589 μm



Door - front left side: 589 μm



Wartungshistorie

(gemäß Auftraggeber Informationen)

Fahrgestellnummer: W0VEFYHYCMJ523722

Hersteller / Modell: OPEL OPEL Combo Cargo XL 1.5 D EHZ Edition

Datum	KM-Stand	Beschreibung
10.07.2025	72.892	Batterie ern; Systemtest/Eigendiagnose
30.04.2025	72.892	Reparatur Sonstiges
18.09.2024	72.809	Bremse Sonstiges; Bremsklötze hinten; Bremsklötze vorne; Bremsscheiben hinten; Getriebeöl ern/prüfen; Systemtest/Eigendiagnose
19.02.2024	63.940	Getriebeöl ern/prüfen; Reparatur Sonstiges
16.01.2024	61.459	Motoröl b. Wartung; Ölfilter ern; Ölwechsel; Wartung Sonstiges
27.11.2023	57.989	Bremsklötze vorne
17.04.2023	40.399	Bremse Sonstiges; Bremsflüssigkeit; Bremsflüssigkeit ern; Bremsklötze hinten; Bremsklötze vorne; Bremsscheiben vorne; HU + AU; Kraftstofffilter ern; Luftfiltereinsatz ern; Motoröl b. Wartung; Ölfilter ern; Regelwartungsdienst; Wartung Sonstiges
12.07.2022	21.270	Bremse Sonstiges; Bremsklötze vorne