



OPEL Astra

Astra 1.5 D Start/Stop Sports Tourer

VIN NO W0VBE8EU2L8039107
Registration Number U2L8039107



MOT Date	Number of Owners	Number of Keys	Odometer Reading
-	1	2	89488 km
Last Service	Last Service Mileage	First Registration Date	Country First Registered
2024-12-03	87705	2020-12-07	Germany

Inspection Report Summary

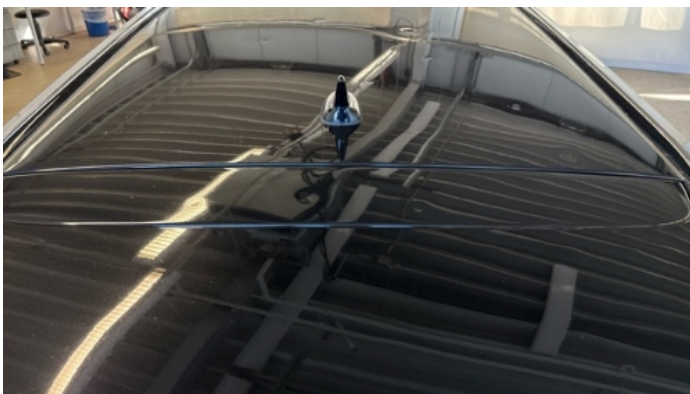
Customer	BCA Online	Report Number	P20250924155838
Inspection Date / Place	2025-09-24 / BCA Berlin	Cosmetic Grade	3

Vehicle Summary

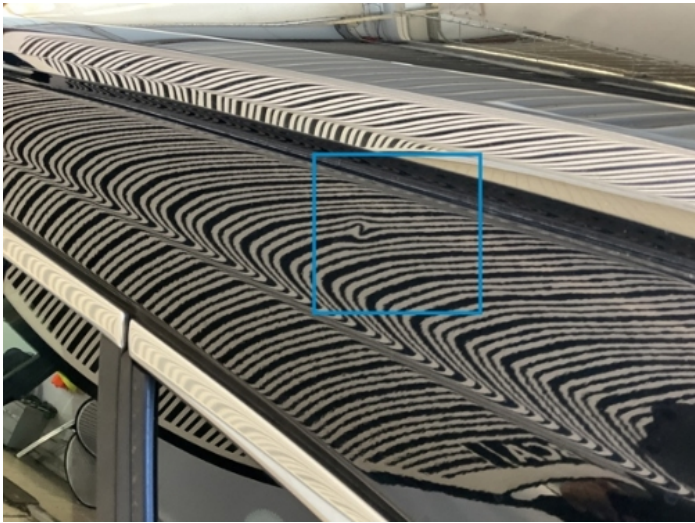
Vehicle Condition	Runner	VAT Type	Qualifying
Fuel Type	Diesel	Road Worthy	Yes
Colour	Black	Engine Size (cc)	1496
Engine Size	1.5	No of Doors	5
Body Type	Stationwagon / Estate	Drive Train	Front
Seat Colour		No of Seats	5
Seat Covering Name		Seat Covering	Cloth/Leather
Charging Cables		NEDC CO2 Rating (q/km)	90
Gearbox Type	Manual		

Vehicle History & Documents

Service Book Available	Present	Next Service Mileage	km
Previous Usage		Imported	No
Manufacturer Warrenty			







Equipment

Tinted Glass	Airbag Status	Anti-lock braking	Cruise control
Front parking sensors	Remote adjusting wing mirrors	Satellite navigation	Stability control
Electrically folding wing mirrors	Radio	USB Socket	Alloys wheels
Bluetooth telephone interface	Enhanced speaker system	Parking Assistance	Reversing Camera
Split folding rear seats	Central locking	Leather steering wheel	Rear parking sensors

Equipment Details

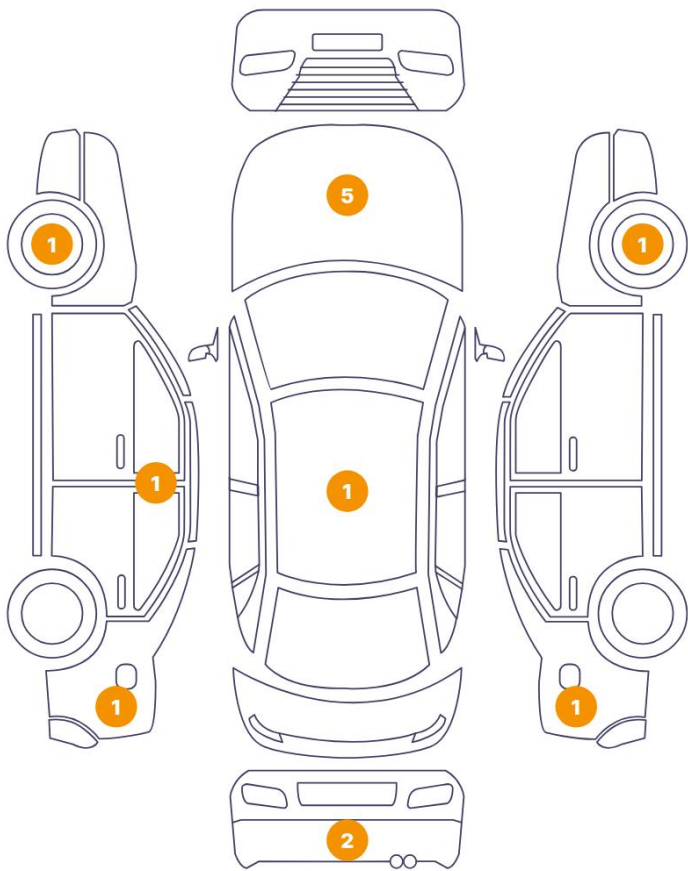
Air Conditioning	Climate Control	Alloy Wheel Size	16
Seat Heating	Front		

Wheels & Tyres

Right Front Tyre Depth	4	Left Front Tyre Depth	5
Right Rear Tyre Depth	5	Left Rear Tyre Depth	5

Cosmetic Damage

13 Schäden



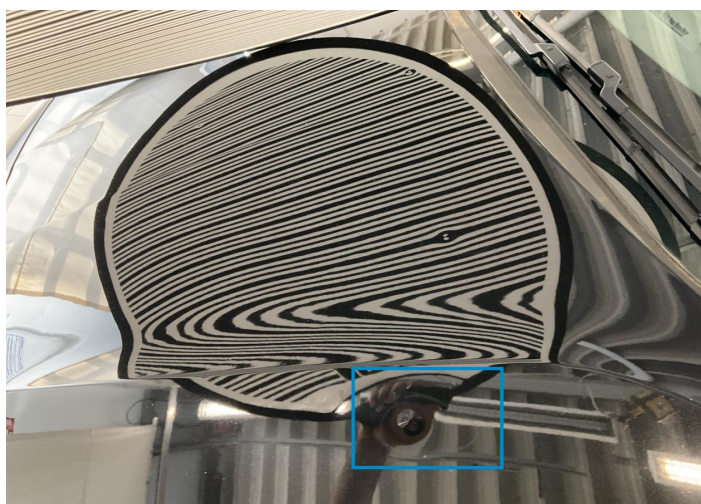
0 Schäden



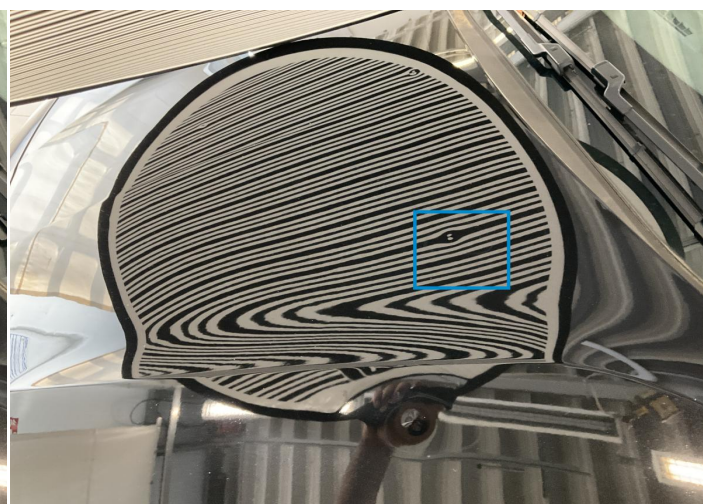
Component		Damage	Comments
1	Hood	Bodywork / Dent / Dent	
2	Hood	Bodywork / Dent / Dent	
3	Hood	Bodywork / Dent / Dent	
4	Hood	Bodywork / Dent / Dent	
5	Roof	Bodywork / Dent / Dent	
6	B Pillar / Center Left	Bodywork / Dent / Dent	
7	Fender / Back Left	Bodywork / Dent / Dent	
8	Corner Bumper / Back Left	Paint / Scratch / Scuff	
9	Bumper / Back	Paint / Scratch / Scuff	
10	Rim / Front Right	Out of Bodywork / Scratch	
11	Rim / Front Left	Out of Bodywork / Scratch	
12	Hood	Paint / Poor Previous Repair	

13 Fender / Back Right

Paint / Scratch / Scuff



1. Hood
Bodywork / Dent / Dent -



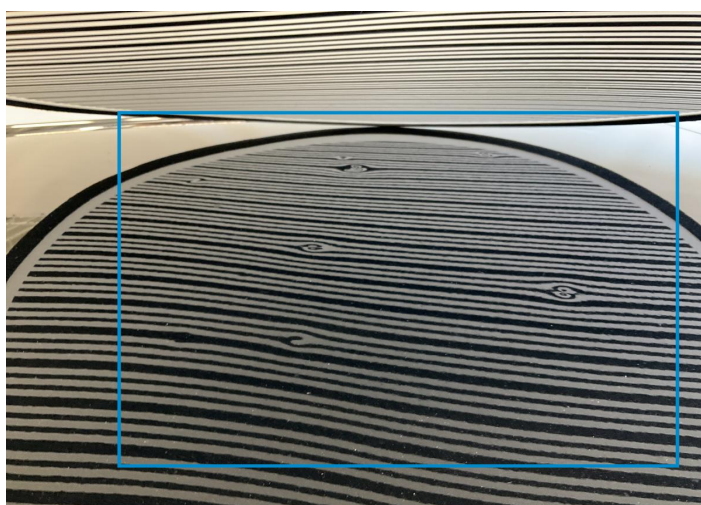
2. Hood
Bodywork / Dent / Dent -



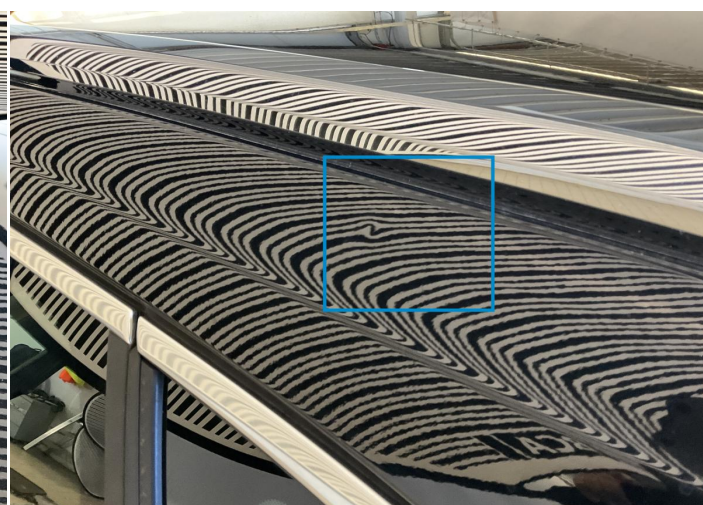
3. Hood
Bodywork / Dent / Dent -



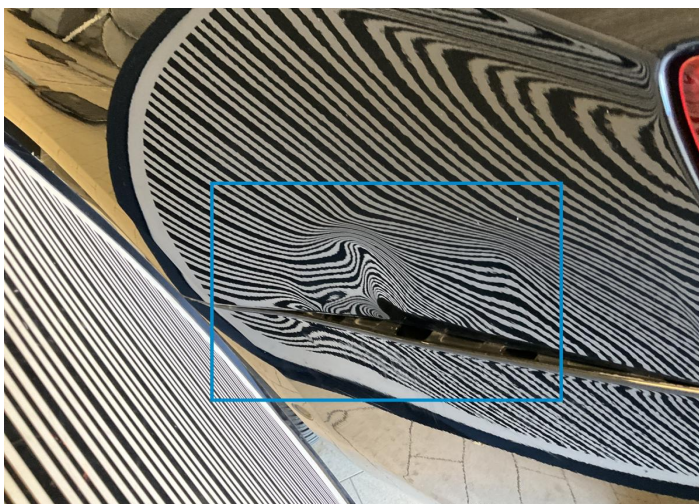
4. Hood
Bodywork / Dent / Dent -



5. Roof
Bodywork / Dent / Dent -



6. B Pillar / Center Left
Bodywork / Dent / Dent -



7. Fender / Back Left
Bodywork / Dent / Dent -



8. Corner Bumper / Back Left
Paint / Scratch / Scuff -



9. Bumper / Back
Paint / Scratch / Scuff -



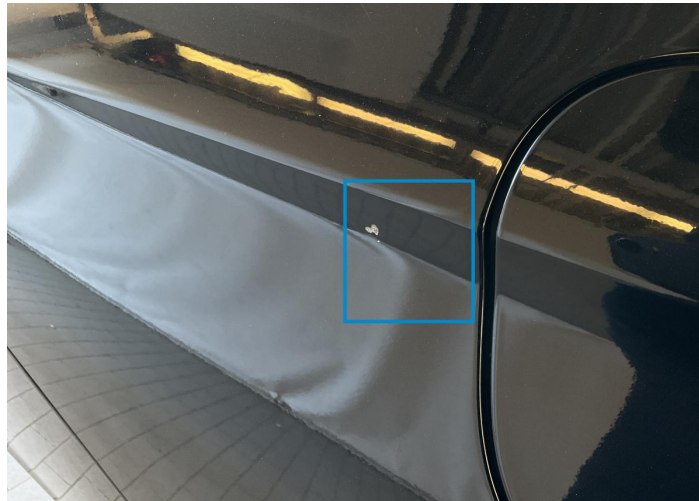
10. Rim / Front Right
Out of Bodywork / Scratch -



11. Rim / Front Left
Out of Bodywork / Scratch -



12. Hood
Paint / Poor Previous Repair -



13. Fender / Back Right
Paint / Scratch / Scuff -

Mechanical Condition

Engine

Engine Starts	✓	Engine Status / EML	✓
Engine Leak Visible	✓		

Equipments Test

Central Locking	✓	Audio Equipment	✓
AC / Heating System	✓	Electric Windows	✓
Navigation System	✓	Parking Sensors / Cameras Functioning	✓

Control Lights

ABS Warning Light	✓	ESP Fault/Traction Control Malfunction Light	✓
Airbag Warning Light	✓	Oil Pressure Warning Light	✓
Brake Warning Light	✓	Power Steering Warning Light	✓
Alternator / Battery	✓	All - wheel Drive	✓
No Dashboard Lights	✓	Display Defect	✓
Service Light	✓	Tire Pressure Monitoring System	✓

Gearbox

Gear Box	✓
----------	---

Levels

Coolant Fluid	✓	Brakes Fluid	✓
---------------	---	--------------	---

Test Drive Inspection

Steering Wheel			
Steering Noise / Anomaly		✓	
Engine			
Engine Noise	✓	The Gears Scratch / Skip / Abnormal Operation	✓
Fume Quantity	✓	Power Loss	✓
Brake			
Brake System Anomaly		✓	
Clutch			
Clutch Functioning		✓	
General			
Test Driven Status		✓	
✓ <i>No troubles detected, good condition or correct tests, according to vehicle age and mileage</i>			
! <i>Damages or malfunction detected that requires repairs by the buyer</i>			
NA <i>Not applicable</i>			
= <i>Not tested</i>			

Disclaimer

Please also note the "UserGuide condition report", which shows the scope of the vehicle description.

[User Guide](#)