



Expertise

Protocol number: 41500800  
Order No. / Reference: 25129875  
Inspection date: 12 Sept 2025

Manufacturer: Opel	Model: Astra 1.5 D Start/Stop Sports Tourer Automatik Business Edition
VIN: W0VBD8EV9N8043041	



Vehicle details	
Manufacturer / Type / Model / Equipment	
Opel Astra 1.5 D Start/Stop Sports Tourer Automatik Business Edition	
Vehicle Identification number	W0VBD8EV9N8043041
Mileage (Read)	105,038 km
First registration	15 Jun 2022
Number of holders	1
Power / Engine displacement	90 kw / 1,496 ccm
Fuel type / Cylinder	Diesel / 3
Gearbox / Number of gears	Automatic / 9
Type of drive	Front drive
Type of vehicle	Station wagon
Colour / colour code	Schneeweiß Uni
Doors / Seats	5 / 5
Upholstery type	Cloth
Colour of upholstery	Black-Grey
Driving readiness	Not roadworthy / not moveable



## Vehicle details

<b>Maintenance booklet / proof</b>	digital proof / complete	<b>Next maintenance in</b>	74 %
<b>Last maintenance on / at</b>	06/2025 at 104,676 km		
<b>Key is / should be</b>	2 / 2	<b>FZG documents</b>	ZB#2 (B) was available (copy), ZB#1 (S) was not available
		<b>Letter No.</b>	GJ674617
<b>Previous damage / Accident</b>	None detectable	<b>Repainting</b>	None detectable
<b>Inspection conditions</b>	sufficient	<b>Lifting equipment / pit</b>	yes
<b>Test drive</b>	Not performed	<b>Engine function test</b>	With complaint
<b>Driving readiness</b>	Not roadworthy / not moveable		
<b>Manufacturer key number/ type code number</b>	1844 / ALL 00262		
<b>Emission standard</b>	EURO6;WLTP;AP;PI/CI; M, N1 I	<b>Fine dust sticker</b>	
<b>Permitted total weight</b>	1,980 kg	<b>Empty weight</b>	

## Tyres

### Mounted tyres

#	Tyre size	Type of tyre	Manufacturer	Tread depth
1)	205/55 R16 94V	All-season tyres on Steel rim with wheel cover	Pirelli	5mm / 5mm
2)	205/55 R16 94V	All-season tyres on Steel rim with wheel cover	Goodyear	6mm / 6mm

### Replacement

Typ	Tyre size	Type of tyre	Manufacturer	Tread depth
E	115/70 R16 92M	Summer tyres on Steel	Continental	3 mm

**Legend:** Tread depth information for tires on the left is in the first place, for tires on the right is in the second place on the axle in the direction of travel

## Equipment

### Standard equipment

- 2 ignition keys
- Airbag for driver and passenger side
- Airbag: Head airbags 1st and 2nd row of seats outside
- Anti-lock braking system (ABS)
- Exterior mirrors for driver and passenger side electrically adjustable and heated
- Brake light, third
- Roof rails black
- Diesel particulate filter (DPF)
- Electronic Stability Program Plus (ESP Plus)
- Speed controller with limiter
- Back window, heater
- Interior lighting, front and rear
- Air conditioning
- trunk lighting
- Front headrests
- LED headlights
- Steering wheel: leather steering wheel
- Lighting equipment
- Parking pilot, rear parking aid
- Upholstery: Cloth
- Radio: Digital radio reception DAB/DAB+/DMB-R
- Tire repair kit
- Rear seat backrest folds forward in a 60:40 ratio
- Seat belts: Three-point seat belts on all seats
- Visual equipment
- Start/Stop system
- Traction Control (TC) Plus
- Immobiliser
- Central locking with radio remote control and interior switches
- Storage compartments
- Airbag: Chest-pelvis side airbag for driver and front passenger side
- Automatic activation of the hazard warning lights
- Hill Start Assist
- On-board computer
- Roof design line, above in black
- Decorative strips Antelao Sand/Polar Silver
- tachometer
- Electric windows front and rear
- Transmission: 9-speed automatic transmission
- Rear window wiper
- Instruments, black, with high-gloss chrome rings, 3.5" driver information display
- Headrests (3) rear
- Load compartment cover
- LED daytime running lights
- Steering column, height and length adjustable
- Fog light
- Pedals: Disengaging safety pedals
- Quickheat rapid heating system
- Radio: Multimedia radio with 7" touchscreen color display
- Tire pressure monitoring system
- Power steering
- Safety net for luggage compartment
- Seats: Comfort seats, front
- 12V socket in the center console
- Pre-installation for ISOFIX child seat retention system
- Heat-insulating glazing, green tinted and windshield

### Extra equipment

- Fabric Formula black
- Load compartment tray
- Paintwork: Uni special color Snow White
- Parking pilot, front and rear parking aid (with acoustic warning signal when parking forwards and backwards)
- Removable trailer coupling (including Trailer Stability Program TSP)
- rubber mats
- Wheels: Run-flat wheel, steel 4Jx16
- Wheels: Steel 6.5 J x 16 with tires 205/55 R16
- Radio: Multimedia Navigation (Multimedia Radio, 7" color touchscreen display with USB port, hands-free system, voice control, Bluetooth audio streaming, smartphone integration via Apple CarPlay and Android Auto, navigation system with integrated memory, road maps for over 30 European countries, 2D and 3D map display, dynamic route guidance via map and/or arrow display and announcement, dynamic route guidance via the extended Traffic Message Channel (TMCpro))
- Sliding front center armrest (with storage compartments and cup holder)



### Brief expert findings

Documents submitted	At the time of the inspection, the registration certificate Part 2 (letter) was available, but the registration certificate Part 1 (certificate) was not. (Copy)
VIN comparison	The vehicle identification number (VIN) was read from the vehicle and its conformity with the submitted documents was verified during the inspection by the undersigned.
Inspection	The inspection conditions were sufficient for the assessment of the vehicle. Lifting equipment and a pit were available for examining the vehicle.
Test drive	No test drive/maneuvering was carried out during the inspection of the vehicle.
Engine function test	An engine test run was performed, problem has been detected This is due to the following reason: Unrunder Leerlauf
Driving readiness	At the time of inspection, the vehicle was not drivable, but could only be towed.

### Value reducing factors

No.	Component group	Description
1	Instrument panel	Indicator light (Reifendruck) - on - Perform diagnosis
2	Bonnet	Bonnet - dent(s) - Smart repair
3	Engine	Engine (Ruckelt) - Functional / admissibility - Perform diagnosis

### Wear and tear

No.	Component group	Description
1	Side panel - rear left side	Side panel - dent(s) - No deduction
2	Vehicle glazing	Windscreen - Stone chips - No deduction
3	Headlight	Headlight - left side - Stone chips - No deduction
4	Headlight	Headlight - right side - Stone chips - No deduction
5	Front bumper	Front bumper - Stone chips - No deduction
6	Tail light	Tail lamp - left side - Scratch(es) - No deduction
7	Tail light	Tail lamp - right side - Scratch(es) - No deduction
8	Door - rear left side	Door - dent(s) - No deduction
9	Trim / covers	Boot lid - interior trim - Scratch(es) - No deduction

The vehicle shows signs of wear commensurate with its age and use.

### Order/Scope of order

The order was placed to prepare a sales report for the vehicle described. This includes the following:

- Description of core relevant information about the vehicle
- Documentation of equipment features  
(*Delivery by third-party service providers*)
- Documentation of damage, defects, missing parts
- Documentation of previous damage, unrepaired previous damage, repainting
- a brief visual or functional inspection of the equipment details if possible.  
(*Functional tests of driver assistance systems are not included in the scope of services!*)
- a photo documentation of the vehicle



## Basis for the order

This product is based on the Alphabet Fuhrpark GmbH guidelines for vehicle returns and valuations. The expert makes the explicit findings in each individual case objectively within the framework of the specified standards based on his or her own expertise.

The vehicle inspection takes place in a disassembled state.

Damage or defects that can only be detected during disassembly/diagnosis work or through advanced knowledge remain within the scope of the prognosis risk. An extended risk exists for concealed defects caused by fraudulent deception and not identifiable by the expert.

Damage or defects resulting from normal use or wear and tear of the vehicle will be accepted according to the applicable standard.

There was no explicit identification or monetary consideration of the expected features within the product.

Features which in their nature and severity slightly exceed normal use but do not constitute unacceptable damage will be documented and identified under signs of use if necessary.

Damage or defects which, according to the underlying standard, can no longer be attributed to normal use or wear and tear are listed in the product under "Depreciating Factors".

Depending on the product specification, a monetary ID can be provided. If this takes place, the costs can be 100% d or pro rata depending on the vehicle's age and mileage.

## Previous damages

Apparently, no repaired previous damage could be found on the vehicle.





**Figure 1:** Diagonal front (left)



**Figure 2:** Diagonal front (right)



**Figure 3:** Diagonal rear (left)



**Figure 4:** Diagonal rear (right)



**Figure 5:** Interior - front



**Figure 6:** Interior - rear





Figure 7: Instrument cluster



Figure 8: Instrument panel



Figure 9: Interior 360° view



Figure 10: Cargo area



Figure 11: VIN



Figure 12: Mounted tyres



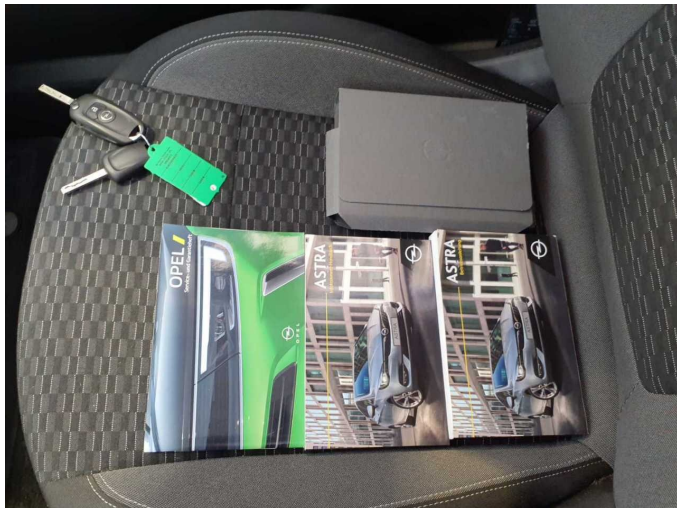


Figure 13: Documents



Figure 14: Documents

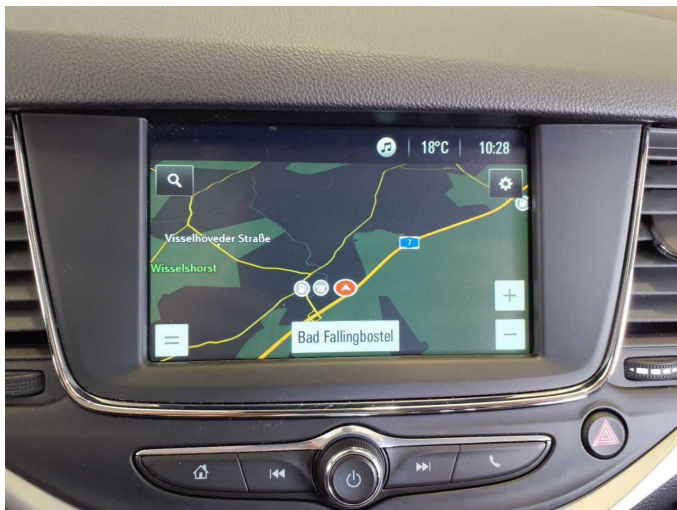


Figure 15: Navigation



Figure 16: Misc.



Figure 17: Misc.



Figure 18: Misc.





Figure 19: Misc.



Figure 20: Misc.



Figure 21: Misc.



Figure 22: Misc.



Damage 1: Instrument panel: Indicator light (Reifendruck) - on - Perform diagnosis



Damage 1: Instrument panel: Indicator light (Reifendruck) - on - Perform diagnosis



**Damage 2:** Bonnet: Bonnet - dent(s) - Smart repair



**Damage 2:** Bonnet: Bonnet - dent(s) - Smart repair



**Damage 2:** Bonnet: Bonnet - dent(s) - Smart repair



**Damage 2:** Bonnet: Bonnet - dent(s) - Smart repair

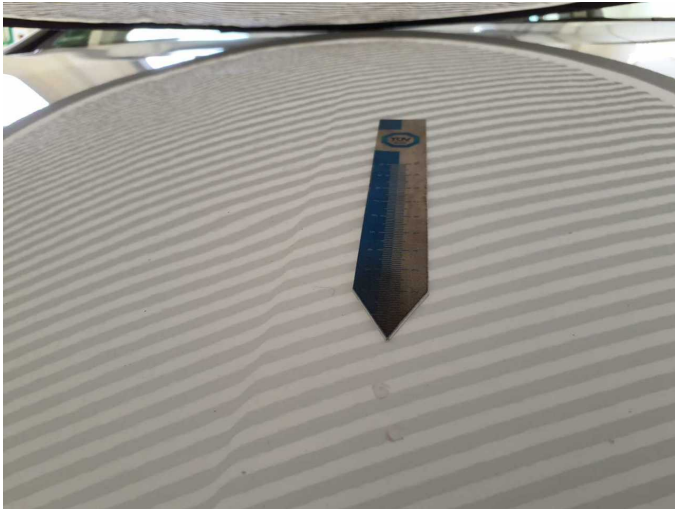


**Damage 2:** Bonnet: Bonnet - dent(s) - Smart repair



**Damage 2:** Bonnet: Bonnet - dent(s) - Smart repair





**Damage 2:** Bonnet: Bonnet - dent(s) - Smart repair



**Wear and tear 8:** Door - rear left side: Door - dent(s) - No deduction



**Wear and tear 8:** Door - rear left side: Door - dent(s) - No deduction



**Wear and tear 9:** Trim / covers: Boot lid - interior trim - Scratch(es) - No deduction



**Wear and tear 9:** Trim / covers: Boot lid - interior trim - Scratch(es) - No deduction



**Wear and tear 9:** Trim / covers: Boot lid - interior trim - Scratch(es) - No deduction





# Wartungshistorie

(gemäß Auftraggeber Informationen)

Fahrgestellnummer: W0VBD8EV9N8043041

Hersteller / Modell: OPEL OPEL Astra 1.5 D Start/Stop Sports Tourer Automatik  
Business Edition

Datum	KM-Stand	Beschreibung
10.06.2025	104.676	HU + AU; Motoröl b. Wartung; Ölfilter ern; Regelwartungsdienst; Wartung Sonstiges
21.01.2025	92.963	Ölfilter ern; Reparatur Sonstiges; Systemtest/Eigendiagnose; Wartung Sonstiges; Zahnriemen/Steuerkett ern
20.11.2024	87.741	Bremsflüssigkeit; Bremsflüssigkeit ern; Motoröl b. Wartung; Ölfilter ern; Regelwartungsdienst; Wartung Sonstiges
06.06.2024	69.550	Bremsinspektion vo + hi; Bremse Sonstiges; Bremsklötze hinten; Bremsklötze vorne; Bremsscheiben hinten; Bremsscheiben vorne
04.03.2024	58.578	Kraftstofffilter ern; Motoröl b. Wartung; Ölfilter ern; Regelwartungsdienst; Wartung Sonstiges
21.06.2023	28.272	Motoröl b. Wartung; Regelwartungsdienst