



Expertise

Protocol number: 41775944
Order number / reference: 25259230
Inspection date: 1 Oct 2025

Manufacturer: Opel

Model: Astra 1.5 D Start/Stop Sports Tourer Automatik Business Edition

VIN: W0VBD8EV4N8036384



Vehicle details	
Manufacturer / Type / Model / Equipment	
Opel Astra 1.5 D Start/Stop Sports Tourer Automatik Business Edition	
Vehicle Identification number	W0VBD8EV4N8036384
Mileage (Read)	70,614 km
First registration	10 Feb 2022
Number of holders	1
Power / Engine displacement	90 kw / 1,496 ccm
Fuel type / Cylinder	Diesel / 3
Gearbox / Number of gears	Automatic / 9
Type of drive	Front drive
Type of vehicle	Station wagon
Colour / colour code	Argonsilber metallic
Doors / Seats	5 / 5
Upholstery type	Cloth
Colour of upholstery	Black-Grey



Vehicle details

Maintenance booklet / proof	digital proof / complete	Next maintenance in	
Last maintenance on / at	05/2025 at 68,388 km		
Key is / should be	2 / 2	FZG documents	ZB#2 (B) was available (copy), ZB#1 (S) was not available
		Letter No.	GJ630530
Previous damage / Accident	Detectable	Repainting	Detectable
Inspection conditions	sufficient	Lifting equipment / pit	yes
Test drive	Not performed	Engine function test	Performed
Manufacturer key number/ type code number	1844 / ALL 00263		
Emission standard	EURO6;WLTP;AP;PI/CI; M, N1 I	Fine dust sticker	
Permitted total weight	1,980 kg	Empty weight	

Tyres

Mounted tyres

#	Tyre size	Type of tyre	Manufacturer	Tread depth
1)	205/55 R16 91V	Summer tyres on Light alloy	Continental	5mm / 5mm
2)	205/55 R16 91V	Summer tyres on Light alloy	Continental	6mm / 6mm

Additional tyres

#	Tyre size	Type of tyre	Manufacturer	Tread depth
1)	205/55 R16 91H	Winter tyres on Light alloy	Bridgestone	8mm / 8mm
2)	205/55 R16 91H	Winter tyres on Light alloy	Bridgestone	8mm / 8mm

Replacement

Typ	Tyre size	Type of tyre	Manufacturer	Tread depth
	Tirefit	Expiration date 03/2026		

Legend: Tread depth information for tires on the left is in the first place, for tires on the right is in the second place on the axle in the direction of travel



Equipment

Standard equipment

- 2 ignition keys (one of which is foldable)
- Airbag for driver and passenger side (passenger airbag can be deactivated)
- Airbag: Chest-pelvis side airbag for driver and front passenger side
- Airbag: Head airbags 1st and 2nd row of seats outside
- Anti-lock braking system (ABS) (with cornering brake control (CBC) and brake assist)
- Exterior mirrors for driver and passenger side, electrically adjustable and heated (manually folding - exterior mirror housing in black)
- Brake light, third
- Roof rails black
- Diesel particulate filter (DPF) (maintenance-free)
- Electronic Stability Program Plus (ESP Plus)
- Speed controller with limiter
- Transmission: 9-speed automatic transmission
- Rear window wiper
- Instruments, black, with high-gloss chrome rings, 3.5" driver information display
- Headrests (3) rear (height adjustable)
- Load compartment cover
- LED daytime running lights (including LED indicators, front, manual headlight range adjustment)
- Fog light
- Pedals: Disengaging safety pedals (PRS (Pedal Release System))
- Quickheat rapid heating system (electric auxiliary heater)
- Radio: Multimedia radio with 7" touchscreen color display (automatic music recognition (title, album, artist, cover) for audio devices with USB port, Bluetooth audio streaming, hands-free system via Bluetooth interface, display of phone book and call lists, smartphone integration via Apple CarPlay and Android Auto, voice control, navigation (Google Maps, Apple Maps), music, phone, reading and dictating text messages, speed-dependent volume and bass control, USB interface and Aux-in, 6 speakers)
- Safety net for luggage compartment (including fastening equipment behind 1st or 2nd row of seats)
- Visibility equipment (rain sensor, front interior rearview mirror automatically dimming, automatic dimming headlights with tunnel detection)
- 12V socket in the center console
- Pre-installation for ISOFIX child seat mounting system (including top tether attachment points, rear outside)
- Heat-insulating glazing, green tinted and windshield
- Storage compartments (storage compartment in the center console and instrument panel, driver's side - storage compartment in the front doors, suitable for 1.5-liter drinks bottles - storage compartment in the rear doors, suitable for 0.5-liter drinks bottles - 4 lashing eyes in the luggage compartment)
- Automatic activation of the hazard warning lights (and unlocking of the doors after airbag or belt tensioner deployment)
- Hill Start Assist
- On-board computer (with check control system)
- Roof design line, above in black
- Decorative strips Antelao Sand/Polar Silver
- tachometer
- Electric windows front and rear (with touch function and anti-pinch protection)
- Back window, heater
- Interior lighting, front and rear
- Air conditioning (with particle and activated carbon filter)
- trunk lighting
- Front headrests (height adjustable)
- LED headlights
- Steering column, height and length adjustable
- Lighting equipment (makeup mirror in sun visors, illuminated - reading lights, rear - ambient lighting in the roof console)
- Upholstery: Cloth
- Radio: Digital radio reception DAB/DAB+/DMB-R (Digital Audio Broadcasting)
- Tire repair kit (including tire sealant and 12-volt compressor (without jack))
- Tire pressure monitoring system (tire pressure display for each wheel)
- Rear seat backrest folds forward in a 60:40 ratio
- Power steering (speed-dependent)
- Seat belts: Three-point seat belts on all seats (belt force limiters and pretensioners on the front and outer rear seats - warning audible and illuminated warning lights for unfastened seat belts on all seats)
- Start/Stop System (Driver Assistant - Reinforced Starter - High-Performance Battery - Eco Switch to Deactivate the Start/Stop Function - Brake Energy Regeneration)
- Traction Control (TC) Plus (traction control with engine and brake intervention)
- Immobiliser
- Central locking with radio remote control and interior switches (ignition key matched to exterior color)

Extra equipment



- Radio: Multimedia Navigation (Multimedia Radio, 7" color touchscreen display with USB port, hands-free system, voice control, Bluetooth audio streaming, smartphone integration via Apple CarPlay and Android Auto, navigation system with integrated memory, road maps for over 30 European countries, 2D and 3D map display, dynamic route guidance via map and/or arrow display and announcement, dynamic route guidance via the extended Traffic Message Channel (TMCpro))
- Two-zone automatic climate control (with separate temperature control for driver and front passenger, including manual air recirculation, particle/activated carbon filter, automatic air distribution, sun position sensor, humidity sensor)
- Light alloy wheels 7 J x 16 in "10-spoke" design (with 205/55 R 16 tires)
- Package: Business Edition Plus Package (Ergonomic active seat, certified by the Campaign for Healthy Backs (AGR), driver - dual-zone automatic climate control - parking pilot, front and rear parking sensors)
- Paint finish: metallic
- Sliding front center armrest (with storage compartments and cup holder)
- Steering wheel: Heated leather steering wheel and seat heating, multi-stage, driver and front passenger (including footwell heating in the rear)

Brief expert findings

Documents submitted	At the time of the inspection, the registration certificate Part 2 (letter) was available, but the registration certificate Part 1 (certificate) was not. (Copy)
VIN comparison	The vehicle identification number (VIN) was read from the vehicle and its conformity with the submitted documents was verified during the inspection by the undersigned.
Inspection	The inspection conditions were sufficient for the assessment of the vehicle. Lifting equipment and a pit were available for examining the vehicle.
Test drive	No test drive/maneuvering was carried out during the inspection of the vehicle.
Engine function test	An engine test run was performed.

Value reducing factors

No.	Component group	Description
1	Seat - front	Seat cover - right side - Soiled - Clean
2	Door - front right side	Door - Dent / paintcoat damage - Smart repair
3	Wheel / tyres	Alloy rim - rear right side - Scratch(es) - Loss in value
4	Bonnet	Bonnet - Deformed - Repair and paint

Wear and tear

No.	Component group	Description
1	Roof	Roof - Stone chips - No deduction
2	Vehicle glazing	Windscreen - Stone chips - No deduction

The vehicle shows signs of wear commensurate with its age and use.

Previous damages

No.	Previous damage	Extent of damage (Net)
1	Side - left, Provided by user / customer, from 14 Oct 2024	1.571,16 €
2	Rear, Provided by user / customer, from 11 Dec 2024	1.940,20 €
3	Side right, Provided by user / customer, from 18 Apr 2024	2.087,33 €
4	Rear, Provided by user / customer, from 10 Jul 2024	2.668,94 €
5	Side - left, Provided by user / customer, from 10 Mar 2025	3.337,29 €



Accident damages

No. Accident

1 Front

Repainting

No. Repainting

1 Boot lid / rear door, Side panel - rear left side, Side panel - rear right side, Door - rear right side, Door - front left side, Professionally carried out, Invoice of repair done Non-existent

Paint coat thickness measurement

Boot lid / rear door	266 µm	Side panel - rear left side	250 µm
Side panel - rear right side	821 µm	Door - rear right side	176 µm
Door - front left side	228 µm		

Order/Scope of order

The order was placed to prepare a sales report for the vehicle described. This includes the following:

- Description of core relevant information about the vehicle
- Documentation of equipment features
(Delivery by third-party service providers)
- Documentation of damage, defects, missing parts
- Documentation of previous damage, unrepaired previous damage, repainting
- a brief visual or functional inspection of the equipment details if possible.
(Functional tests of driver assistance systems are not included in the scope of services!)
- a photo documentation of the vehicle

Basis for the order

This product is based on the Alphabet Fuhrpark GmbH guidelines for vehicle returns and valuations. The expert makes the explicit findings in each individual case objectively within the framework of the specified standards based on his or her own expertise.

The vehicle inspection takes place in a disassembled state.

Damage or defects that can only be detected during disassembly/diagnosis work or through advanced knowledge remain within the scope of the prognosis risk. An extended risk exists for concealed defects caused by fraudulent deception and not identifiable by the expert.

Damage or defects resulting from normal use or wear and tear of the vehicle will be accepted according to the applicable standard.

There was no explicit identification or monetary consideration of the expected features within the product.

Features which in their nature and severity slightly exceed normal use but do not constitute unacceptable damage will be documented and identified under signs of use if necessary.

Damage or defects that can no longer be attributed to normal use or wear and tear according to the underlying standard are listed in the product under value-reducing factors.

Depending on the product specification, a monetary ID can be provided. If this takes place, the costs can be 100% d or pro rata depending on the vehicle's age and mileage.

Previous damages

Non-repaired previous damages were found at the vehicle. The necessary repair costs are listed in the expert report or if necessary, are listed in detail in a separately enclosed repair cost calculation.



Comments

- Servicerestlauf nicht lesbar, AdBlue Füllstand zu gering

- Die beigefügte Reparaturkostenkalkulation wurde nach bestem Wissen und Gewissen unter eingeschränkten Besichtigungsbedingung im demontagefreien Zustand erstellt. Es können aufgrund verdeckter Beschädigung erhebliche Mehrkosten und somit Abweichung der für den Unfall ausgewiesenen Reparaturkosten nicht ausgeschlossen werden



Figure 1: Diagonal front (left)



Figure 2: Diagonal front (right)



Figure 3: Diagonal rear (left)



Figure 4: Diagonal rear (right)



Figure 5: Interior - front



Figure 6: Interior - rear



Figure 7: Instrument cluster



Figure 8: Instrument panel



Figure 9: Interior 360° view



Figure 10: Cargo area



Figure 11: VIN



Figure 12: Mounted tyres



Figure 13: Documents

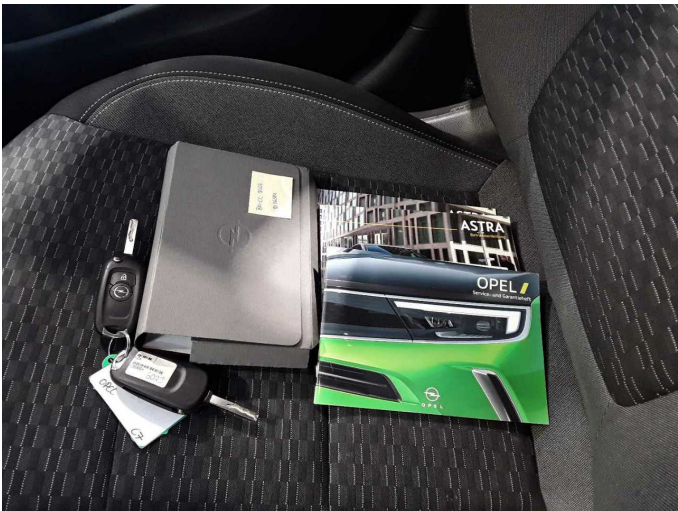


Figure 14: Documents



Figure 15: Additional tyres

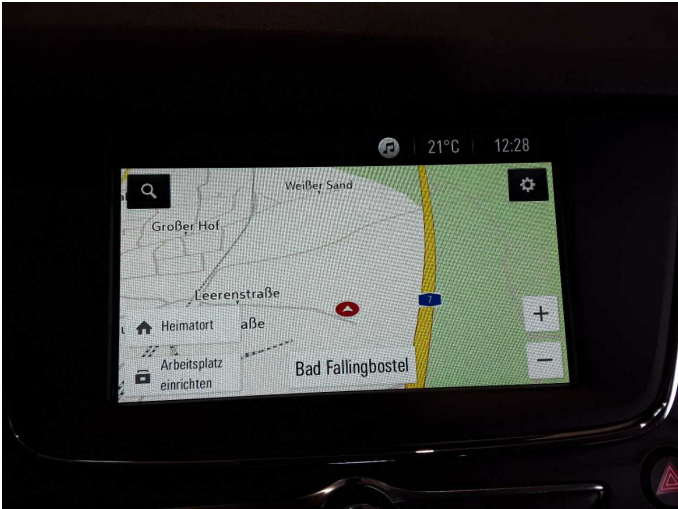


Figure 16: Navigation



Figure 17: Misc.



Figure 18: Misc.



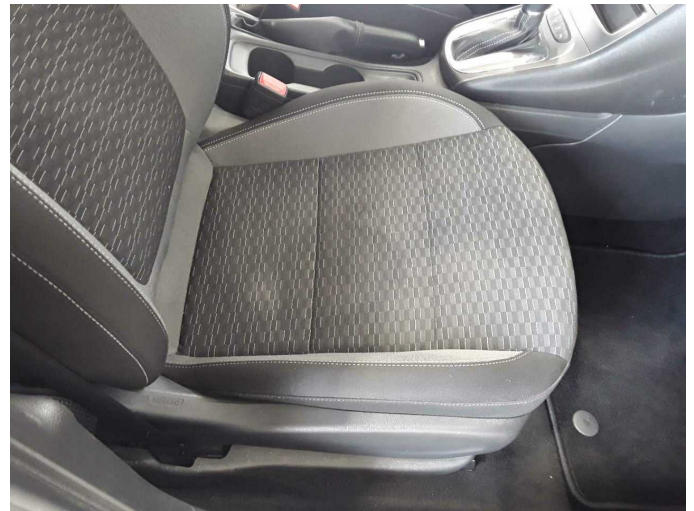
Figure 19: Misc.



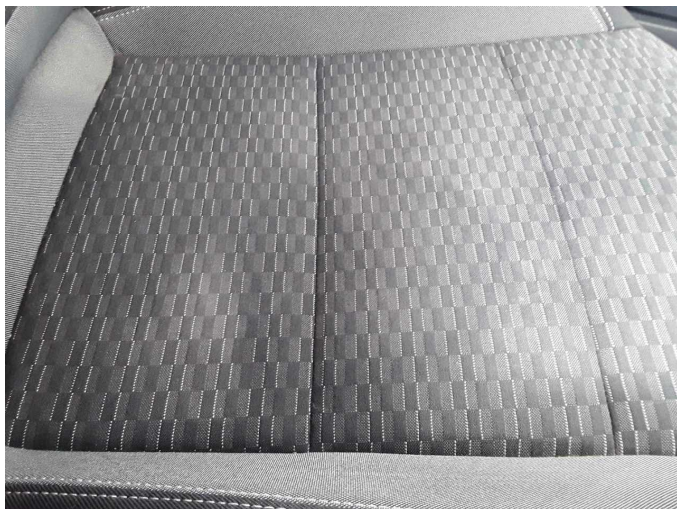
Figure 20: Misc.



Figure 21: Misc.



Damage 1: Seat - front: Seat cover - right side - Soiled - Clean



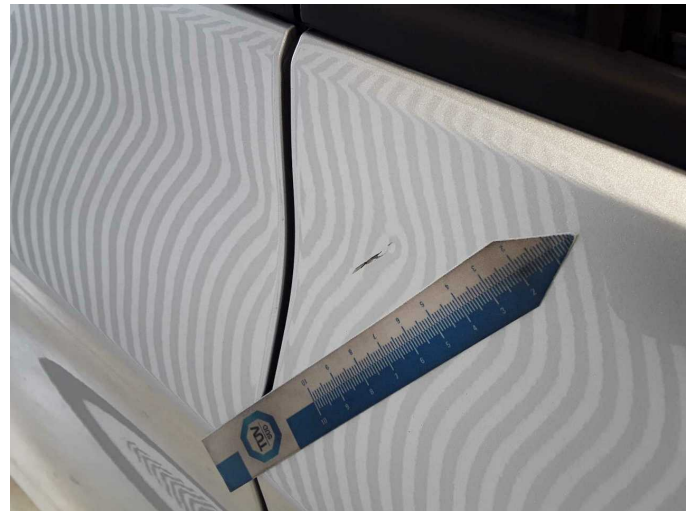
Damage 1: Seat - front: Seat cover - right side - Soiled - Clean



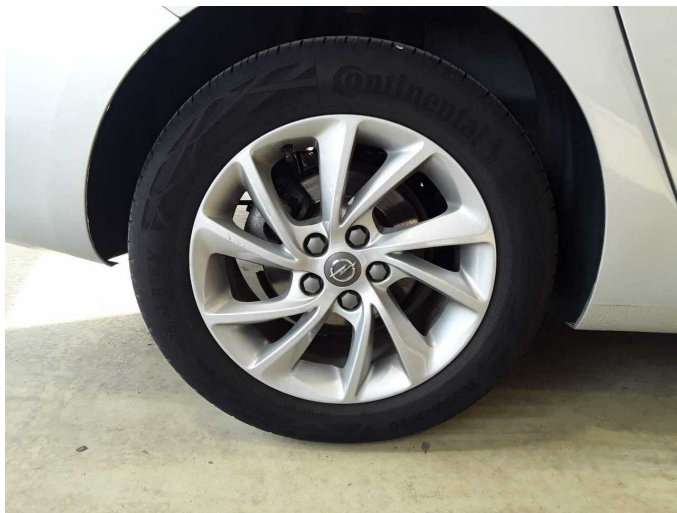
Damage 2: Door - front right side: Door - Dent / paintcoat damage - Smart repair



Damage 2: Door - front right side: Door - Dent / paintcoat damage - Smart repair



Damage 2: Door - front right side: Door - Dent / paintcoat damage - Smart repair



Damage 3: Wheel / tyres: Alloy rim - rear right side - Scratch(es) - Loss in value



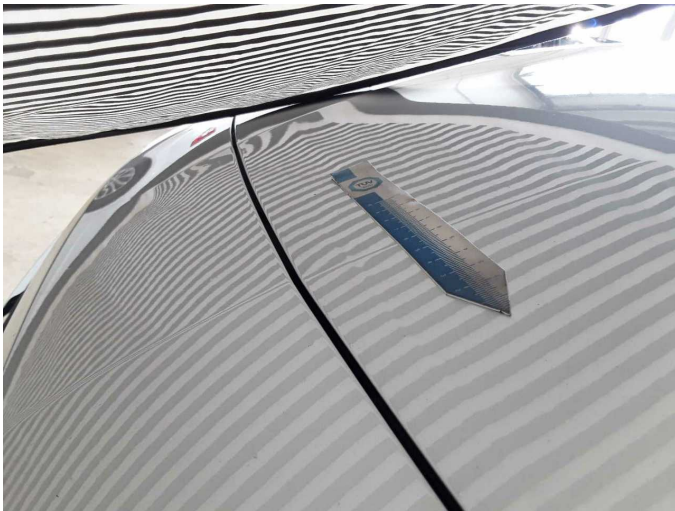
Damage 3: Wheel / tyres: Alloy rim - rear right side - Scratch(es) - Loss in value



Damage 3: Wheel / tyres: Alloy rim - rear right side - Scratch(es) - Loss in value



Damage 4: Bonnet: Bonnet - Deformed - Repair and paint



Damage 4: Bonnet: Bonnet - Deformed - Repair and paint



Damage 4: Bonnet: Bonnet - Deformed - Repair and paint



Accident 1: Front



Accident 1: Front



Accident 1: Front



Accident 1: Front



Accident 1: Front



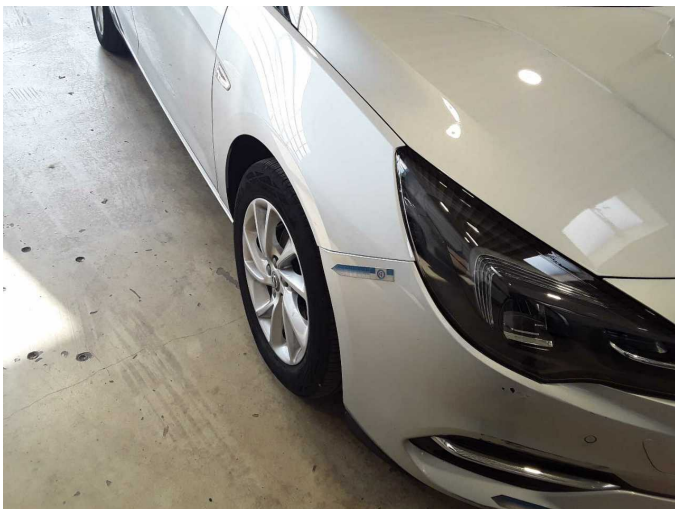
Accident 1: Front



Accident 1: Front



Accident 1: Front



Accident 1: Front



Accident 1: Front



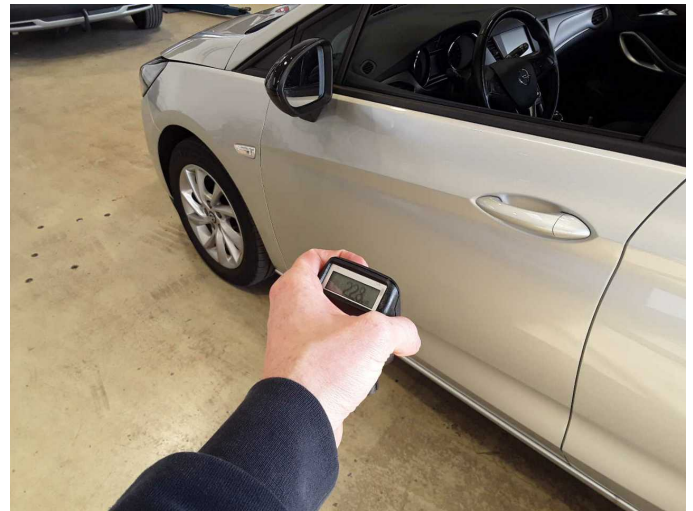
Accident 1: Front



Repainting 1: Boot lid / rear door, Side panel - rear left side, Side panel - rear right side, Door - rear right side, Door - front left side



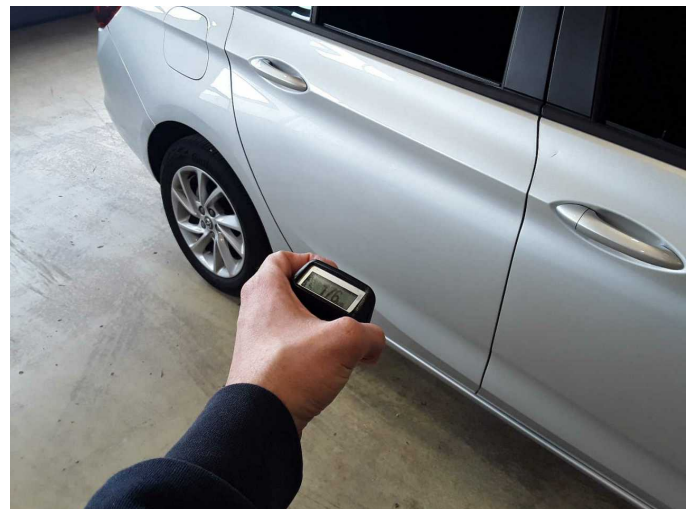
Repainting 1: Boot lid / rear door, Side panel - rear left side, Side panel - rear right side, Door - rear right side, Door - front left side



Repainting 1: Boot lid / rear door, Side panel - rear left side, Side panel - rear right side, Door - rear right side, Door - front left side



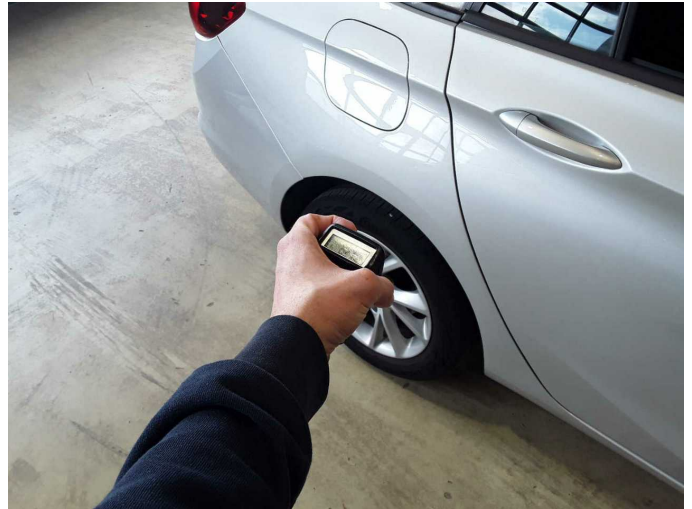
Repainting 1: Boot lid / rear door, Side panel - rear left side, Side panel - rear right side, Door - rear right side, Door - front left side



Repainting 1: Boot lid / rear door, Side panel - rear left side, Side panel - rear right side, Door - rear right side, Door - front left side



Repainting 1: Boot lid / rear door, Side panel - rear left side, Side panel - rear right side, Door - rear right side, Door - front left side



Repainting 1: Boot lid / rear door, Side panel - rear left side, Side panel - rear right side, Door - rear right side, Door - front left side



Repainting 1: Boot lid / rear door, Side panel - rear left side, Side panel - rear right side, Door - rear right side, Door - front left side



Repainting 1: Boot lid / rear door, Side panel - rear left side, Side panel - rear right side, Door - rear right side, Door - front left side



Repainting 1: Boot lid / rear door, Side panel - rear left side, Side panel - rear right side, Door - rear right side, Door - front left side



Wartungshistorie

(gemäß Auftraggeber Informationen)

Fahrgestellnummer: W0VBD8EV4N8036384

Hersteller / Modell: OPEL OPEL Astra 1.5 D Start/Stop Sports Tourer Automatik
Business Edition

Datum	KM-Stand	Beschreibung
16.05.2025	68.388	HU + AU; Motoröl b. Wartung; Ölfilter ern; Regelwartungsdienst; Wartung Sonstiges
06.03.2024	44.986	Bremsflüssigkeit; Bremsflüssigkeit ern; Kraftstofffilter ern; Motoröl b. Wartung; Ölfilter ern; Regelwartungsdienst; Wartung Sonstiges
27.02.2023	22.193	Motoröl b. Wartung; Ölfilter ern; Regelwartungsdienst; Wartung Sonstiges