



Expertise

Protocol number: 41603224
Order No. / Reference: 24995582
Inspection date: 15 Sept 2025

Manufacturer: Opel	Model: Astra 1.2 Turbo Start/Stop Sports Tourer Business Edition
VIN: W0VBD8ES4N8043051	



Vehicle details	
Manufacturer / Type / Model / Equipment	
Opel Astra 1.2 Turbo Start/Stop Sports Tourer Business Edition	
Vehicle Identification number	W0VBD8ES4N8043051
Mileage (Read)	20,768 km
First registration	31 Aug 2022
Number of holders	1
Power / Engine displacement	96 kw / 1,199 ccm
Fuel type / Cylinder	Petrol / 3
Gearbox / Number of gears	Manual / 6
Type of drive	Front drive
Type of vehicle	Station wagon
Colour / colour code	Argonsilber Metallic
Doors / Seats	5 / 5
Upholstery type	Cloth
Colour of upholstery	Black-Anthracite
Vehicle with smoke odor	no
Driving readiness	Not roadworthy / moveable



Vehicle details

Maintenance booklet / proof	digital proof / complete	Next maintenance in	94 %
Last maintenance on / at	06/2025 at 20,738 km		
Key is / should be	1 / 2	FZG documents	ZB#2 (B) was available (copy), ZB#1 (S) was not available
		Letter No.	GJ664198
Previous damage / Accident	Detectable	Repainting	None detectable
Inspection conditions	sufficient	Lifting equipment / pit	yes
Test drive	Not possible to drive	Engine function test	With complaint
Driving readiness	Not roadworthy / moveable		
Manufacturer key number/ type code number	1844 / AKX 00141		
Emission standard	EURO6;WLTP;AP;PI/CI; M, N1 I	Fine dust sticker	
Permitted total weight	1,870 kg	Empty weight	

Tyres

Mounted tyres

#	Tyre size	Type of tyre	Manufacturer	Tread depth
1)	205/55 R16 91V	Summer tyres on Steel rim with wheel cover	Continental	4mm / 4mm
2)	205/55 R16 91V	Summer tyres on Steel rim with wheel cover	Continental	5mm / 5mm

Additional tyres

#	Tyre size	Type of tyre	Manufacturer	Tread depth
1)	205/55 R16 91H	Winter tyres on Steel	Continental	7mm / 7mm
2)	205/55 R16 91H	Winter tyres on Steel	Continental	6mm / 6mm

Legend: Tread depth information for tires on the left is in the first place, for tires on the right is in the second place on the axle in the direction of travel

Equipment

Standard equipment

- 2 ignition keys (one of which is foldable)
- Airbag for driver and passenger side (passenger airbag can be deactivated)
- Airbag: Chest-pelvis side airbag for driver and front passenger side
- Airbag: Head airbags 1st and 2nd row of seats outside
- Anti-lock braking system (ABS) (with cornering brake control (CBC) and brake assist)
- Exterior mirrors for driver and passenger side, electrically adjustable and heated (manually folding - exterior mirror housing in black)
- Brake light, third
- Roof rails black
- tachometer
- Electric windows front and rear (with touch function and anti-pinch protection)
- Back window, heater
- Interior lighting, front and rear
- Air conditioning (with particle and activated carbon filter)
- trunk lighting
- Front headrests (height adjustable)
- LED headlights
- Steering wheel: Comfort steering wheel with steering wheel remote control
- Lighting equipment (makeup mirror in sun visors, illuminated - reading lights, rear - ambient lighting in the roof console)
- Pedals: Disengaging safety pedals (PRS (Pedal Release System))
- Radio: Digital radio reception DAB/DAB+/DMB-R (Digital Audio Broadcasting)
- Tire repair kit (including tire sealant and 12-volt compressor (without jack))
- Tire pressure monitoring system (tire pressure display for each wheel)
- Wheels: Designer wheels, 6.5 J x 16 with tires 205/55 R16
- Rear seat backrest folds forward in a 60:40 ratio
- Power steering (speed-dependent)
- Seat belts: Three-point seat belts on all seats (belt force limiters and pretensioners on the front and outer rear seats - warning audible and illuminated warning lights for unfastened seat belts on all seats)
- Seats: Comfort seats, front (driver's seat 6-way adjustable (length, height) - passenger seat 4-way adjustable (length))
- 12V socket in the center console
- Traction Control (TC) Plus (traction control with engine and brake intervention)
- Immobiliser
- Central locking with radio remote control and interior switches (ignition key matched to exterior color)
- Storage compartments (storage compartment in the center console and instrument panel, driver's side - storage compartment in the front doors, suitable for 1.5-liter drinks bottles - storage compartment in the rear doors, suitable for 0.5-liter drinks bottles - 4 lashing eyes in the luggage compartment)
- Automatic activation of the hazard warning lights (and unlocking of the doors after airbag or belt tensioner deployment)
- Hill Start Assist
- On-board computer (with check control system)
- Roof design line, above in black
- Decorative strips Antelao Sand/Polar Silver
- Electronic Stability Program Plus (ESP Plus)
- Speed controller with limiter
- Transmission: 6-speed manual transmission
- Rear window wiper
- Instruments, black, with high-gloss chrome rings, 3.5" driver information display
- Headrests (3) rear (height adjustable)
- Load compartment cover
- LED daytime running lights (including LED indicators, front, manual headlight range adjustment)
- Steering column, height and length adjustable
- Fog light
- Gasoline particulate filter
- Parking pilot, rear parking aid (with acoustic warning signal when reversing)
- Upholstery: Cloth
- Radio: Multimedia radio with 7" touchscreen color display (automatic music recognition (title, album, artist, cover) for audio devices with USB port, Bluetooth audio streaming, hands-free system via Bluetooth interface, display of phone book and call lists, smartphone integration via Apple CarPlay and Android Auto, voice control, navigation (Google Maps, Apple Maps), music, phone, reading and dictating text messages, speed-dependent volume and bass control, USB interface and Aux-in, 6 speakers)
- Safety net for luggage compartment (including fastening equipment behind 1st or 2nd row of seats)
- Visibility equipment (rain sensor, front interior rearview mirror automatically dimming, automatic dimming headlights with tunnel detection)
- Start/Stop System (Driver Assistant - Reinforced Starter - High-Performance Battery - Eco Switch to Deactivate the Start/Stop Function - Brake Energy Regeneration)
- Pre-installation for ISOFIX child seat mounting system (including top tether attachment points, rear outside)
- Heat-insulating glazing, green tinted and windshield



Extra equipment

- Paint finish: metallic
- Sliding front center armrest (with storage compartments and cup holder)
- Parking pilot, front and rear parking aid (with acoustic warning signal when parking forwards and backwards)
- Seats: Ergonomic active seat (certified by the Campaign for Healthy Backs (AGR) Driver's seat: - Adjustable length, height, and tilt - Lumbar support electropneumatically adjustable in height and length - Extendable thigh support - Pocket on the front seat backs, driver and passenger)
- Steering wheel: Heated leather steering wheel and seat heating, multi-stage, driver and front passenger (including footwell heating in the rear)
- Radio: Multimedia Navigation (Multimedia Radio, 7" color touchscreen display with USB port, hands-free system, voice control, Bluetooth audio streaming, smartphone integration via Apple CarPlay and Android Auto, navigation system with integrated memory, road maps for over 30 European countries, 2D and 3D map display, dynamic route guidance via map and/or arrow display and announcement, dynamic route guidance via the extended Traffic Message Channel (TMCpro))

Brief expert findings

Documents submitted	At the time of the inspection, the registration certificate Part 2 (letter) was available, but the registration certificate Part 1 (certificate) was not. (Copy)
VIN comparison	The vehicle identification number (VIN) was read from the vehicle and its conformity with the submitted documents was verified during the inspection by the undersigned.
Inspection	The inspection conditions were sufficient for the assessment of the vehicle. Lifting equipment and a pit were available for examining the vehicle.
Test drive	It was not possible to drive the vehicle at the time of the inspection.
Engine function test	An engine test run was performed, problem has been detected This is due to the following reason: Motorschaden
Driving readiness	At the time of inspection, the vehicle was not drivable under its own power, but can be moved on its own axle with the aid of auxiliary equipment.

Value reducing factors

No.	Component group	Description
1	Door - front left side	Door - Scratched - Smart repair
2	Side panel - rear left side	Sill - Dent / paintcoat damage - Repair and paint
3	Door - front right side	Door (+ Verätzung) - Scratch(es) - Paint
4	Rear bumper	Rear bumper - Scratched - Paint
5	Door - rear left side	Door - Dent / paintcoat damage - Repair and paint
6	Side panel - rear left side	Side panel - Scratch(es) - Paint
7	Engine	Engine - Damaged - repair according to calculation

Wear and tear

No.	Component group	Description
1	Vehicle glazing	Windscreen - Stone chips - No deduction

The vehicle shows signs of wear commensurate with its age and use.

Missing parts

Description

Equipment - Tirefit complete

Equipment - Vehicle key



Accident damages

No. Accident

1 Side right

Order/Scope of order

The order was placed to prepare a sales report for the vehicle described. This includes the following:

- Description of core relevant information about the vehicle
- Documentation of equipment features
(*Delivery by third-party service providers*)
- Documentation of damage, defects, missing parts
- Documentation of previous damage, unrepaired previous damage, repainting
- a brief visual or functional inspection of the equipment details if possible.
(*Functional tests of driver assistance systems are not included in the scope of services!*)
- a photo documentation of the vehicle

Basis for the order

This product is based on the Alphabet Fuhrpark GmbH guidelines for vehicle returns and valuations. The expert makes the explicit findings in each individual case objectively within the framework of the specified standards based on his or her own expertise.

The vehicle inspection takes place in a disassembled state.

Damage or defects that can only be detected during disassembly/diagnosis work or through advanced knowledge remain within the scope of the prognosis risk. An extended risk exists for concealed defects caused by fraudulent deception and not identifiable by the expert.

Damage or defects resulting from normal use or wear and tear of the vehicle will be accepted according to the applicable standard.

There was no explicit identification or monetary consideration of the expected features within the product.

Features which in their nature and severity slightly exceed normal use but do not constitute unacceptable damage will be documented and identified under signs of use if necessary.

Damage or defects which, according to the underlying standard, can no longer be attributed to normal use or wear and tear are listed in the product under "Depreciating Factors".

Depending on the product specification, a monetary ID can be provided. If this takes place, the costs can be 100% d or pro rata depending on the vehicle's age and mileage.

Previous damages

Non-repaired previous damages were found at the vehicle. The necessary repair costs are listed in the expert report or if necessary, are listed in detail in a separately enclosed repair cost calculation.

Comments

- Die beigefügte Reparaturkostenkalkulation wurde nach bestem Wissen und Gewissen unter eingeschränkten Besichtigungsbedingung im demontagefreien Zustand erstellt. Es können aufgrund verdeckter Beschädigung erhebliche Mehrkosten und somit Abweichung der für den Unfall ausgewiesenen Reparaturkosten nicht ausgeschlossen werden



Figure 1: Diagonal front (left)



Figure 2: Diagonal front (right)



Figure 3: Diagonal rear (left)



Figure 4: Diagonal rear (right)



Figure 5: Interior - front



Figure 6: Interior - rear



Figure 7: Instrument cluster



Figure 8: Instrument cluster



Figure 9: Instrument panel

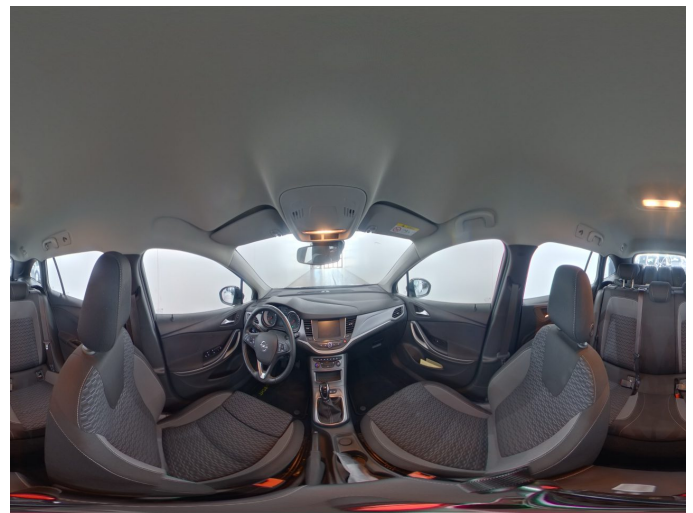


Figure 10: Interior 360° view



Figure 11: Cargo area

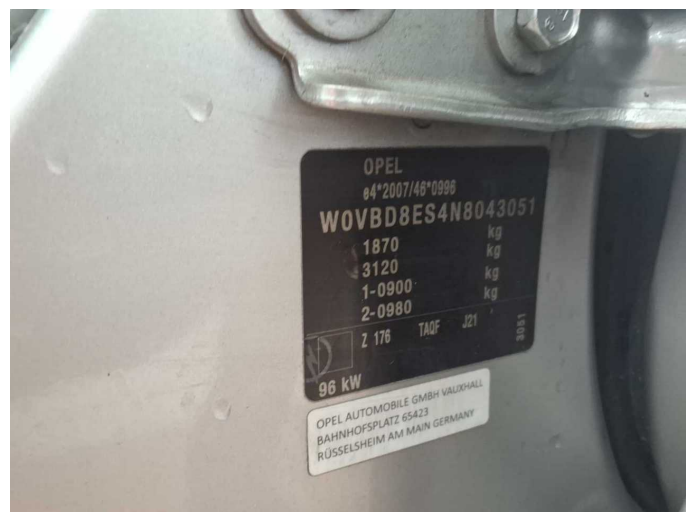


Figure 12: VIN



Figure 13: Mounted tyres

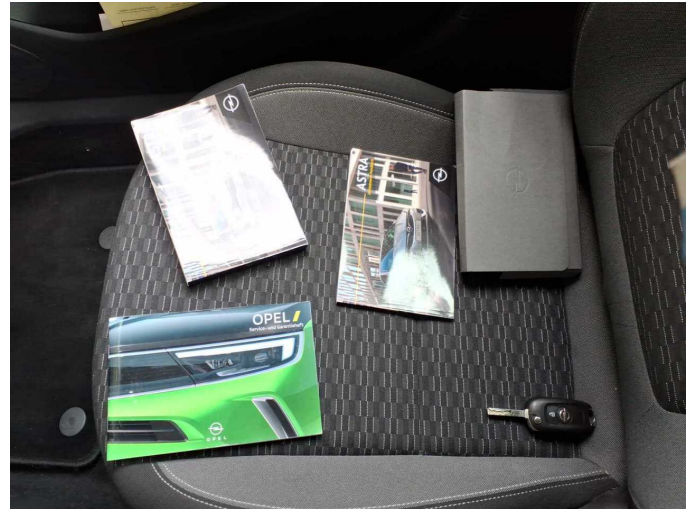


Figure 14: Documents



Figure 15: Documents



Figure 16: Documents



Figure 17: Additional tyres

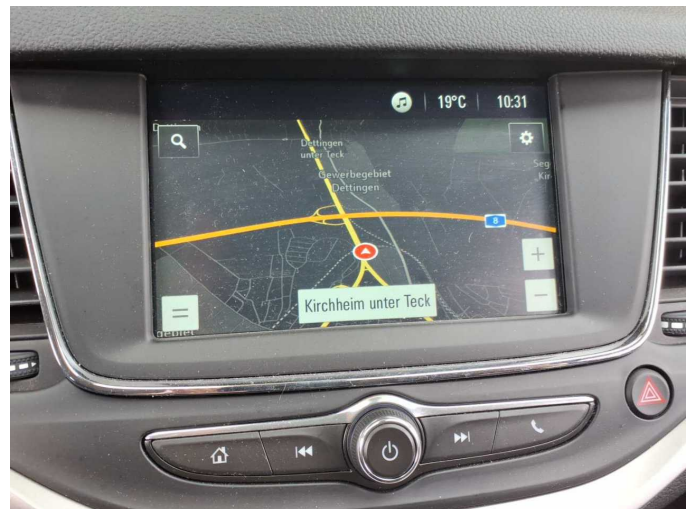


Figure 18: Navigation



Figure 19: Misc.



Figure 20: Misc.

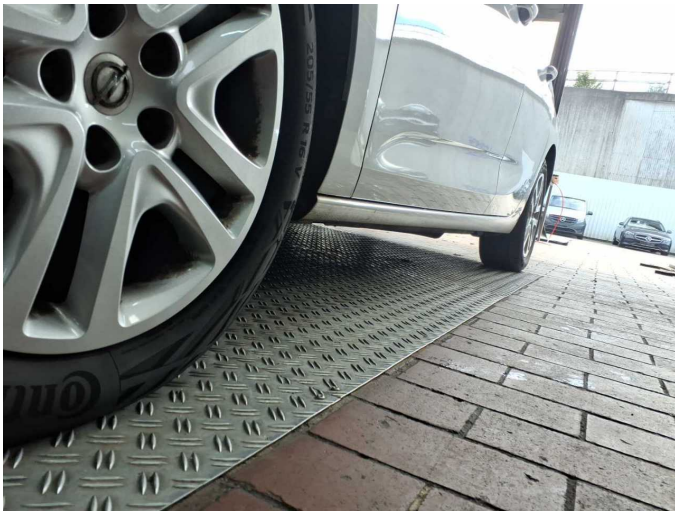


Figure 21: Misc.



Figure 22: Misc.

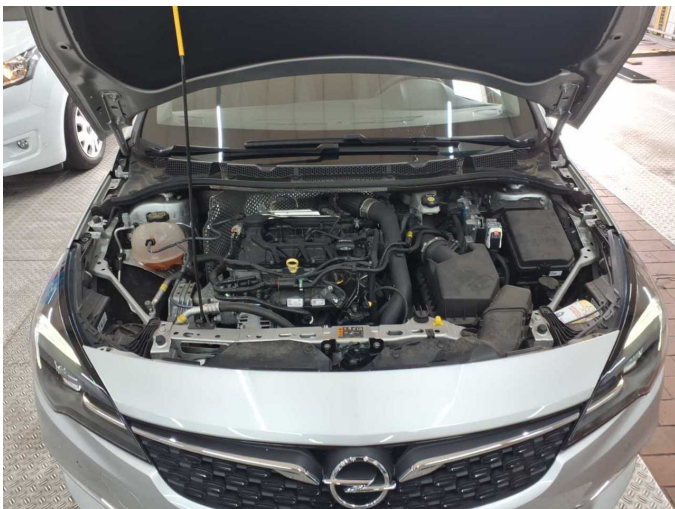


Figure 23: Misc.



Figure 24: Misc.



Figure 25: Misc.



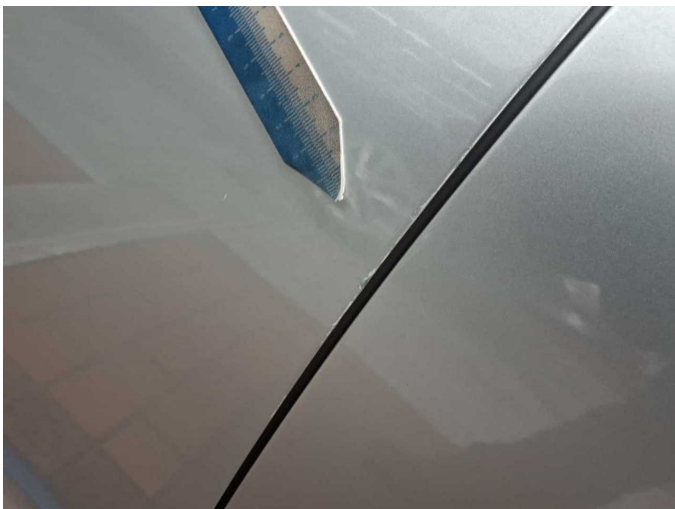
Figure 26: Misc.



Figure 27: Misc.



Damage 1: Door - front left side: Door - Scratched - Smart repair



Damage 1: Door - front left side: Door - Scratched - Smart repair



Damage 2: Side panel - rear left side: Sill - Dent / paintcoat damage - Repair and paint



Damage 2: Side panel - rear left side: Sill - Dent / paintcoat damage - Repair and paint



Damage 2: Side panel - rear left side: Sill - Dent / paintcoat damage - Repair and paint



Damage 2: Side panel - rear left side: Sill - Dent / paintcoat damage - Repair and paint



Damage 2: Side panel - rear left side: Sill - Dent / paintcoat damage - Repair and paint



Damage 3: Door - front right side: Door (+ Verätzung) - Scratch(es) - Paint



Damage 3: Door - front right side: Door (+ Verätzung) - Scratch(es) - Paint



Damage 3: Door - front right side: Door (+ Verätzung) - Scratch(es) - Paint



Damage 3: Door - front right side: Door (+ Verätzung) - Scratch(es) - Paint



Damage 3: Door - front right side: Door (+ Verätzung) - Scratch(es) - Paint



Damage 3: Door - front right side: Door (+ Verätzung) - Scratch(es) - Paint



Damage 4: Rear bumper: Rear bumper - Scratched - Paint



Damage 4: Rear bumper: Rear bumper - Scratched - Paint



Damage 4: Rear bumper: Rear bumper - Scratched - Paint



Damage 4: Rear bumper: Rear bumper - Scratched - Paint



Damage 4: Rear bumper: Rear bumper - Scratched - Paint



Damage 4: Rear bumper: Rear bumper - Scratched - Paint



Damage 5: Door - rear left side: Door - Dent / paintcoat damage - Repair and paint



Damage 5: Door - rear left side: Door - Dent / paintcoat damage - Repair and paint



Damage 5: Door - rear left side: Door - Dent / paintcoat damage - Repair and paint



Damage 5: Door - rear left side: Door - Dent / paintcoat damage - Repair and paint



Damage 6: Side panel - rear left side: Side panel - Scratch(es) - Paint



Damage 6: Side panel - rear left side: Side panel - Scratch(es) - Paint



Damage 6: Side panel - rear left side: Side panel - Scratch(es) - Paint



Damage 6: Side panel - rear left side: Side panel - Scratch(es) - Paint



Damage 6: Side panel - rear left side: Side panel - Scratch(es) - Paint



Accident 1: Side right



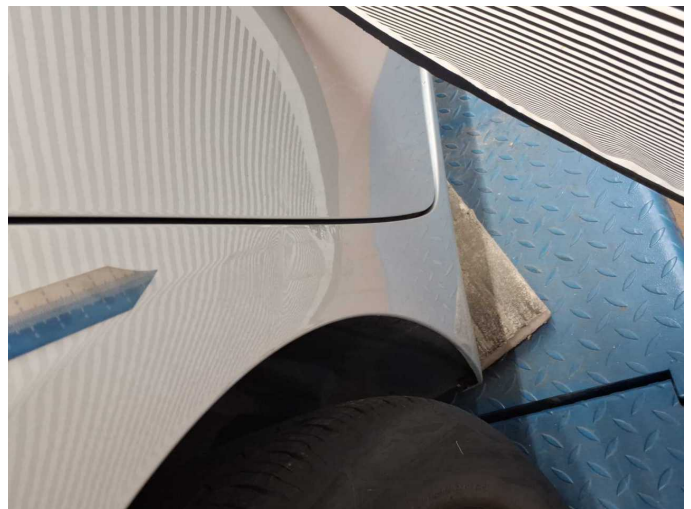
Accident 1: Side right



Accident 1: Side right



Accident 1: Side right



Accident 1: Side right



Accident 1: Side right



Wartungshistorie

(gemäß Auftraggeber Informationen)

Fahrgestellnummer: W0VBD8ES4N8043051

Hersteller / Modell: OPEL OPEL Astra 1.2 Turbo Start/Stop Sports Tourer Business Edition

Datum	KM-Stand	Beschreibung
25.06.2025	20.738	Systemtest/Eigendiagnose
22.08.2024	19.649	Bremsflüssigkeit; Bremsflüssigkeit ern; Motoröl b. Wartung; Ölfilter ern; Regelwartungsdienst; Wartung Sonstiges