



Expertise

Protocol number: 41479586
Order No. / Reference: 25171988
Inspection date: 11 Sept 2025

Manufacturer: Opel	Model: Crossland 1.5 Diesel Elegance
VIN: W0V7H9ENXP4013105	



Vehicle details	
Manufacturer / Type / Model / Equipment	
Opel Crossland 1.5 Diesel Elegance	
Vehicle Identification number	W0V7H9ENXP4013105
Mileage (Read)	57,742 km
First registration	19 Jun 2023
Number of holders	1
Power / Engine displacement	81 kw / 1,499 ccm
Fuel type / Cylinder	Diesel / 4
Gearbox / Number of gears	Manual / 6
Type of drive	Front drive
Type of vehicle	SUV
Colour / colour code	Arktis-Weiß Uni
Doors / Seats	5 / 5
Upholstery type	Cloth
Colour of upholstery	Grey-Black



Vehicle details

Maintenance booklet / proof	Available / complete	Next maintenance in	29,920 km
Last maintenance on / at	01/2025 at 42,176 km		
Key is / should be	1 / 2	FZG documents	ZB#2 (B) was available (copy), ZB#1 (S) was not available
		Letter No.	GQ366409
Previous damage / Accident	None detectable	Repainting	None detectable
Inspection conditions	sufficient	Lifting equipment / pit	yes
Test drive	Not performed	Engine function test	Performed
Manufacturer key number/ type code number	1844 / AMH 00125		
Emission standard	EURO6;WLTP;AP;PI/CI; M, N1 I	Fine dust sticker	
Permitted total weight	1,835 kg	Empty weight	

Tyres

Mounted tyres

#	Tyre size	Type of tyre	Manufacturer	Tread depth
1)	195/60 R16 89H	All-season tyres on Light alloy	Firestone	2mm / 2mm
2)	195/60 R16 93V	All-season tyres on Light alloy	Bridgestone	6mm / 6mm

Legend: Tread depth information for tires on the left is in the first place, for tires on the right is in the second place on the axle in the direction of travel



Equipment

Standard equipment

- | | |
|---|---|
| <ul style="list-style-type: none"> • Storage compartments • Airbag: Head airbag front and rear outside • Anti-lock braking system (ABS) • Exterior mirrors for driver and passenger side electrically adjustable and heated • Brake light, third • Roof rails, silver • Diesel particulate filter (DPF) maintenance-free • Electronic brake force distribution (EBD) • Driver information display, 3.5" • Electric front windows • Transmission: 6-speed manual transmission • Rear window wiper • Instrument inserts, black with chrome rings • Automatic climate control two zones • Front headrests • LED ambient lighting • LED daytime running lights • Headlight range adjustment, manual • Make-up mirror, illuminated in sun visor • Proactive driver assistance system • Radio: Multimedia radio with 7" touchscreen color display, 6 speakers • Rear view camera • Seat belts: Three-point seat belts on all seats • Seats: Comfort seats • Solar Protect thermal insulation glazing • Start/Stop system • Traction control (TC Plus) • Traffic Sign Assistant • Immobiliser | <ul style="list-style-type: none"> • Airbag for driver and passenger side • Airbag: Side airbag for driver and passenger side • Armrest, driver • Hill Start Assist • On-board computer • Roof design line, above, in chrome • Roof spoiler • tachometer • Electronic Stabilization Program (ESP - Plus) • Electric rear windows • Speed controller with limiter • Back window, heater • Interior lighting, front and rear, including reading lights, front • Headrests (3) rear • Paintwork: Roof in body color • LED headlights • Steering wheel: Leather steering wheel with chrome elements and steering wheel remote control • Center armrest, front • Radio: Digital radio reception DAB/DAB+/DMB-R • Tire repair kit • Tire pressure warning • Power steering • Visual equipment • Seats: Seat backrest 60:40 split, foldable • Lane assistant • 12V socket in the center console, front • Underbody protection look, front and rear, in silver • Pre-installation for ISOFIX child seat retention system • Central locking with radio remote control |
|---|---|

Extra equipment

- | | |
|--|---|
| <ul style="list-style-type: none"> • Paint finish: Uni Arctic White • Wheels: Light alloy wheels 6.5 J x 16 with all-season tires 195/60 R16, in BiColor/Black (10 spokes) | <ul style="list-style-type: none"> • Fog light • Wheels: Preparation for spare wheels • Accessories: roof rack |
|--|---|

Brief expert findings

Documents submitted	At the time of the inspection, the registration certificate Part 2 (letter) was available, but the registration certificate Part 1 (certificate) was not. (Copy)
VIN comparison	The vehicle identification number (VIN) was read from the vehicle and its conformity with the submitted documents was verified during the inspection by the undersigned.
Inspection	The inspection conditions were sufficient for the assessment of the vehicle. Lifting equipment and a pit were available for examining the vehicle.
Test drive	No test drive/maneuvering was carried out during the inspection of the vehicle.
Engine function test	An engine test run was performed.



Value reducing factors

No.	Component group	Description
1	Door - rear left side	Door - Scratch(es) - Smart repair
2	Mudguard - left side	Mudguard - left side - Dent / paintcoat damage - Smart repair
3	Engine	Engine (Motorraum ölfeucht) - Leaking - Perform diagnosis
4	Wheel / tyres	Alloy rim - rear left side - Scratch(es) - Loss in value
5	Wheel / tyres	Alloy rim - front left side - Scratch(es) - Loss in value
6	Wheel / tyres	Alloy rim - front right side - Scratch(es) - Loss in value
7	Wheel / tyres	Alloy rim - rear right side - Scratch(es) - Loss in value
8	Wheel / tyres	Tyre - front - Does not meet the leasing specifications - Replace

Wear and tear

No.	Component group	Description
1	Vehicle glazing	Windscreen - Stone chips - No deduction
2	Boot lid / rear door	Boot lid - dent(s) - No deduction
3	Bonnet	Bonnet - dent(s) - No deduction
4	Trim / covers	Floor mats (VL) - Damaged - No deduction

The vehicle shows signs of wear commensurate with its age and use.

Missing parts

Description

Equipment - Tirefit complete

Equipment - Roof rack system

Equipment - Vehicle key

Order/Scope of order

The order was placed to prepare a sales report for the vehicle described. This includes the following:

- Description of core relevant information about the vehicle
- Documentation of equipment features
(*Delivery by third-party service providers*)
- Documentation of damage, defects, missing parts
- Documentation of previous damage, unrepaired previous damage, repainting
- a brief visual or functional inspection of the equipment details if possible.
(*Functional tests of driver assistance systems are not included in the scope of services!*)
- a photo documentation of the vehicle



Basis for the order

This product is based on the Alphabet Fuhrpark GmbH guidelines for vehicle returns and valuations. The expert makes the explicit findings in each individual case objectively within the framework of the specified standards based on his or her own expertise.

The vehicle inspection takes place in a disassembled state.

Damage or defects that can only be detected during disassembly/diagnosis work or through advanced knowledge remain within the scope of the prognosis risk. An extended risk exists for concealed defects caused by fraudulent deception and not identifiable by the expert.

Damage or defects resulting from normal use or wear and tear of the vehicle will be accepted according to the applicable standard.

There was no explicit identification or monetary consideration of the expected features within the product.

Features which in their nature and severity slightly exceed normal use but do not constitute unacceptable damage will be documented and identified under signs of use if necessary.

Damage or defects which, according to the underlying standard, can no longer be attributed to normal use or wear and tear are listed in the product under "Depreciating Factors".

Depending on the product specification, a monetary ID can be provided. If this takes place, the costs can be 100% d or pro rata depending on the vehicle's age and mileage.

Previous damages

Apparently, no repaired previous damage could be found on the vehicle.



Figure 1: Diagonal front (left)



Figure 2: Diagonal front (right)



Figure 3: Diagonal rear (left)



Figure 4: Diagonal rear (right)



Figure 5: Interior - front



Figure 6: Interior - rear



Figure 7: Instrument cluster



Figure 8: Instrument panel



Figure 9: Interior 360° view



Figure 10: Cargo area



Figure 11: VIN



Figure 12: Mounted tyres



Figure 13: Documents



Figure 14: Documents

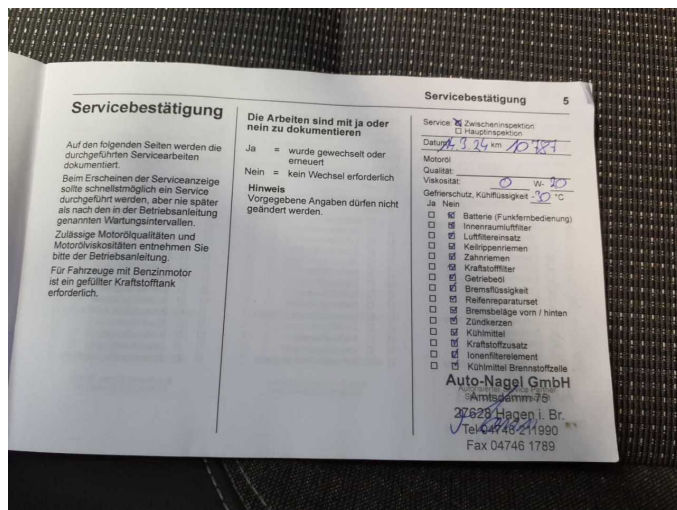


Figure 15: Documents

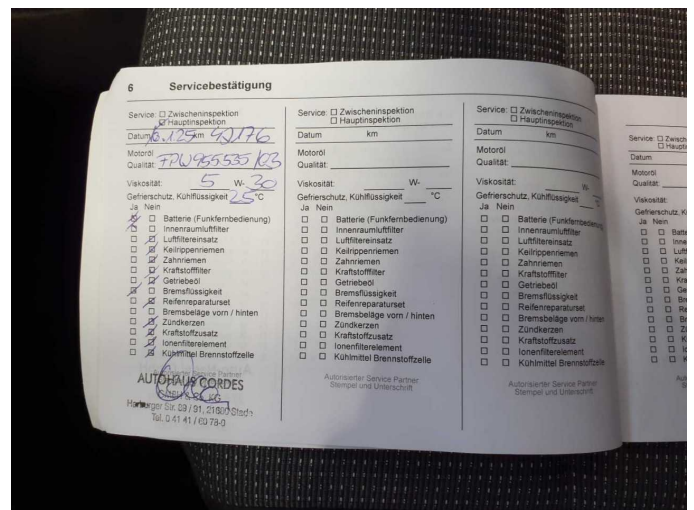


Figure 16: Documents

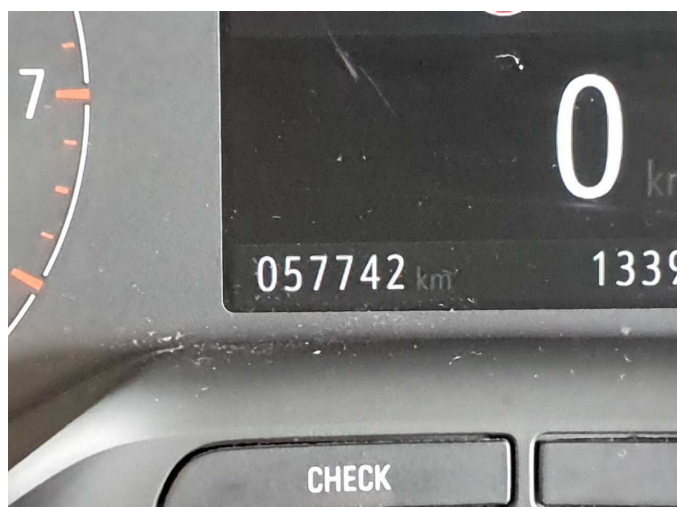


Figure 17: Misc.



Figure 18: Misc.



Figure 19: Misc.



Figure 20: Misc.



Figure 21: Misc.



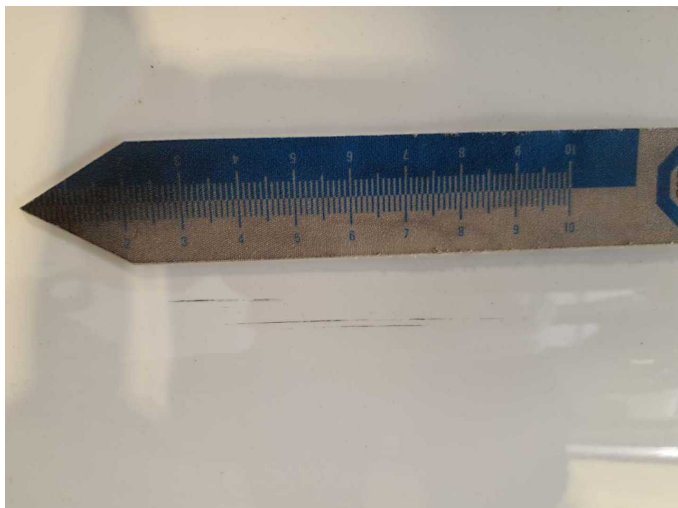
Figure 22: Misc.



Figure 23: Misc.



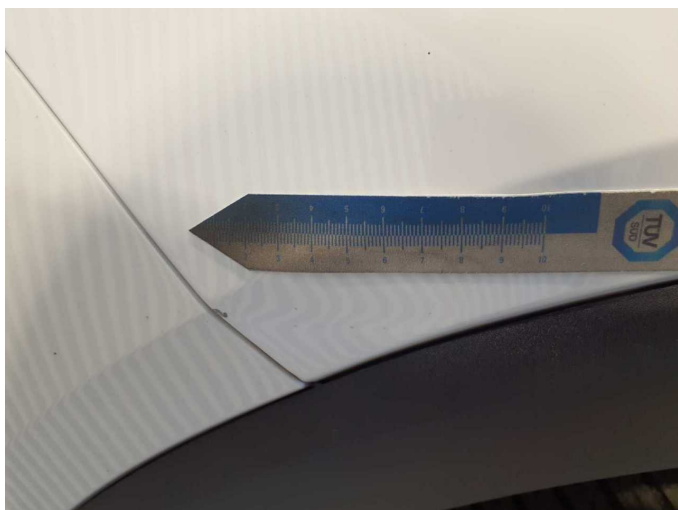
Damage 1: Door - rear left side: Door - Scratch(es) - Smart repair



Damage 1: Door - rear left side: Door - Scratch(es) - Smart repair



Damage 2: Mudguard - left side: Mudguard - left side - Dent / paintcoat damage - Smart repair



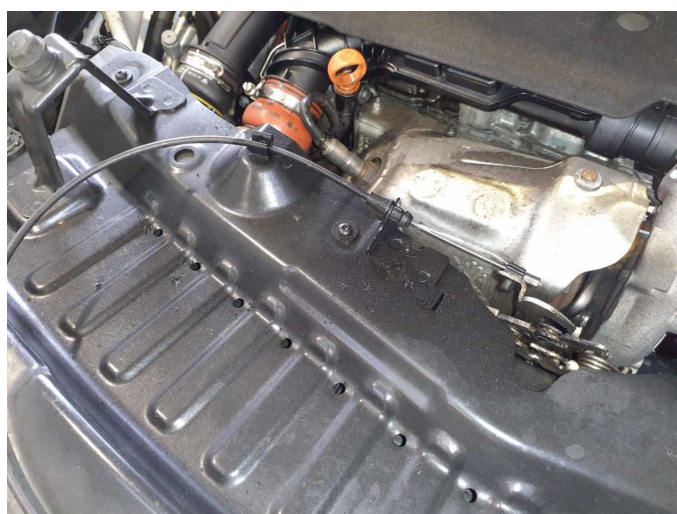
Damage 2: Mudguard - left side: Mudguard - left side - Dent / paintcoat damage - Smart repair



Damage 2: Mudguard - left side: Mudguard - left side - Dent / paintcoat damage - Smart repair



Damage 3: Engine: Engine (Motorraum ölflecht) - Leaking - Perform diagnosis



Damage 3: Engine: Engine (Motorraum ölflecht) - Leaking - Perform diagnosis



Damage 3: Engine: Engine (Motorraum ölfeucht) - Leaking - Perform diagnosis



Damage 3: Engine: Engine (Motorraum ölfeucht) - Leaking - Perform diagnosis



Damage 3: Engine: Engine (Motorraum ölfeucht) - Leaking - Perform diagnosis



Damage 3: Engine: Engine (Motorraum ölfeucht) - Leaking - Perform diagnosis



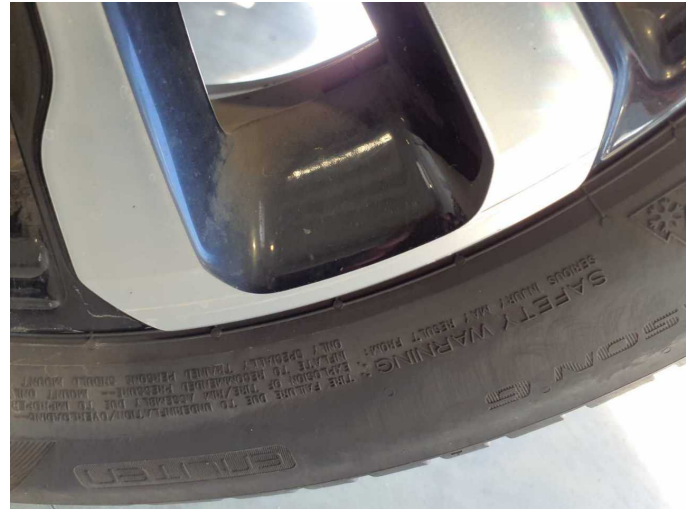
Damage 4: Wheel / tyres: Alloy rim - rear left side - Scratch(es) - Loss in value



Damage 4: Wheel / tyres: Alloy rim - rear left side - Scratch(es) - Loss in value



Damage 4: Wheel / tyres: Alloy rim - rear left side - Scratch(es) - Loss in value



Damage 4: Wheel / tyres: Alloy rim - rear left side - Scratch(es) - Loss in value



Damage 4: Wheel / tyres: Alloy rim - rear left side - Scratch(es) - Loss in value



Damage 4: Wheel / tyres: Alloy rim - rear left side - Scratch(es) - Loss in value



Damage 5: Wheel / tyres: Alloy rim - front left side - Scratch(es) - Loss in value



Damage 5: Wheel / tyres: Alloy rim - front left side - Scratch(es) - Loss in value



Damage 5: Wheel / tyres: Alloy rim - front left side - Scratch(es) - Loss in value



Damage 6: Wheel / tyres: Alloy rim - front right side - Scratch(es) - Loss in value



Damage 6: Wheel / tyres: Alloy rim - front right side - Scratch(es) - Loss in value



Damage 6: Wheel / tyres: Alloy rim - front right side - Scratch(es) - Loss in value



Damage 6: Wheel / tyres: Alloy rim - front right side - Scratch(es) - Loss in value



Damage 7: Wheel / tyres: Alloy rim - rear right side - Scratch(es) - Loss in value



Damage 7: Wheel / tyres: Alloy rim - rear right side - Scratch(es) - Loss in value



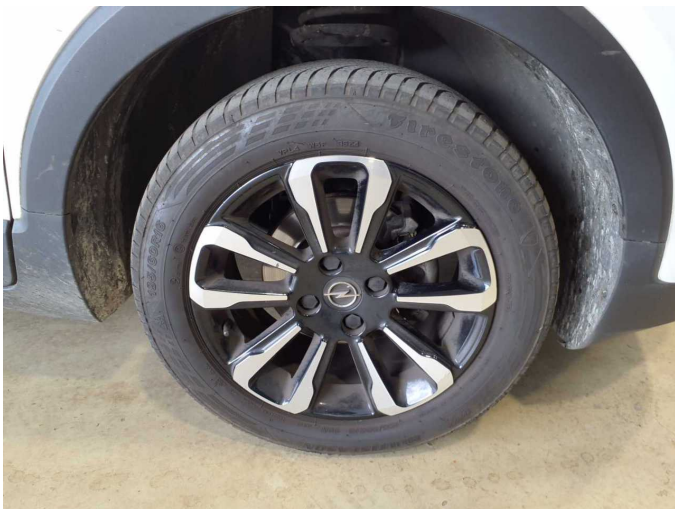
Damage 7: Wheel / tyres: Alloy rim - rear right side - Scratch(es) - Loss in value



Damage 7: Wheel / tyres: Alloy rim - rear right side - Scratch(es) - Loss in value



Damage 7: Wheel / tyres: Alloy rim - rear right side - Scratch(es) - Loss in value



Damage 8: Wheel / tyres: Tyre - front - Does not meet the leasing specifications - Replace



Damage 8: Wheel / tyres: Tyre - front - Does not meet the leasing specifications - Replace



Damage 8: Wheel / tyres: Tyre - front - Does not meet the leasing specifications - Replace



Damage 8: Wheel / tyres: Tyre - front - Does not meet the leasing specifications - Replace



Wear and tear 2: Boot lid / rear door: Boot lid - dent(s) - No deduction



Wear and tear 2: Boot lid / rear door: Boot lid - dent(s) - No deduction



Wear and tear 2: Boot lid / rear door: Boot lid - dent(s) - No deduction



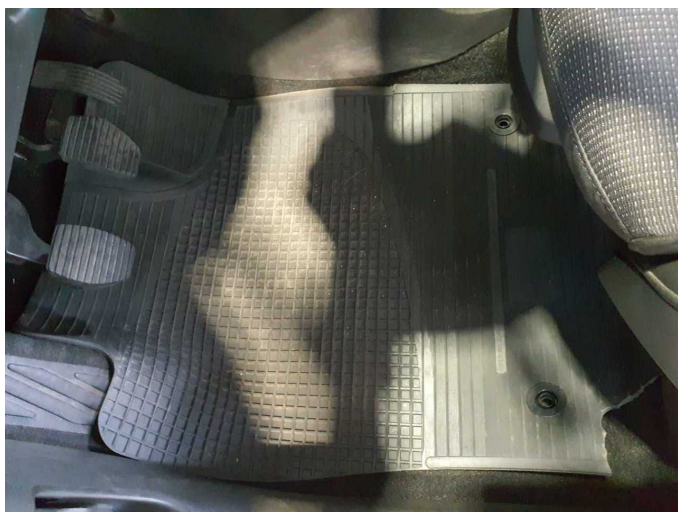
Wear and tear 3: Bonnet: Bonnet - dent(s) - No deduction



Wear and tear 3: Bonnet: Bonnet - dent(s) - No deduction



Wear and tear 3: Bonnet: Bonnet - dent(s) - No deduction



Wear and tear 4: Trim / covers: Floor mats (VL) - Damaged - No deduction



Wear and tear 4: Trim / covers: Floor mats (VL) - Damaged - No deduction