



Expertise

Protocol number: 41310559  
Order No. / Reference: 25000424  
Inspection date: 1 Sept 2025

Manufacturer: Opel

Model: Crossland 1.5 Diesel Elegance

VIN: W0V7H9ENXN4193683



Vehicle details	
Manufacturer / Type / Model / Equipment	
Opel Crossland 1.5 Diesel Elegance	
Vehicle Identification number	W0V7H9ENXN4193683
Mileage (Read)	125,887 km
First registration	25 Jul 2022
Number of holders	1
Power / Engine displacement	81 kw / 1,499 ccm
Fuel type / Cylinder	Diesel / 4
Gearbox / Number of gears	Manual / 6
Type of drive	Front drive
Type of vehicle	SUV
Colour / colour code	Nautic Blau Metallic
Doors / Seats	5 / 5
Upholstery type	Cloth / leather combination
Colour of upholstery	Anthracite-Black
Vehicle with smoke odor	no



## Vehicle details

<b>Maintenance booklet / proof</b>	Available / complete	<b>Next maintenance in</b>	22,800 km
<b>Last maintenance on / at</b>	06/2025 at 118,704 km		
<b>Key is / should be</b>	2 / 2	<b>FZG documents</b>	ZB#2 (B) was available (copy), ZB#1 (S) was not available
		<b>Letter No.</b>	GJ657382
<b>Previous damage / Accident</b>	None detectable	<b>Repainting</b>	Detectable
<b>Inspection conditions</b>	sufficient	<b>Lifting equipment / pit</b>	yes
<b>Test drive</b>	Not performed	<b>Engine function test</b>	Performed
<b>Manufacturer key number/ type code number</b>	1844 / AMH 00104		
<b>Emission standard</b>	EURO6;WLTP;AP;PI/CI; M, N1 I	<b>Fine dust sticker</b>	
<b>Permitted total weight</b>	1,835 kg	<b>Empty weight</b>	

## Tyres

### Mounted tyres

#	Tyre size	Type of tyre	Manufacturer	Tread depth
1)	195/65 R15 91T	Winter tyres on Steel	Michelin	4mm / 4mm
2)	195/65 R15 91T	Winter tyres on Steel	Michelin	6mm / 6mm

### Additional tyres

#	Tyre size	Type of tyre	Manufacturer	Tread depth
1)	195/60 R16 89H	Summer tyres on Light alloy	Bridgestone	5mm / 5mm
2)	195/60 R16 89H	Summer tyres on Light alloy	Bridgestone	6mm / 6mm

### Replacement

Typ	Tyre size	Type of tyre	Manufacturer	Tread depth
	Tirefit	Expiration date 09/2026		

**Legend:** Tread depth information for tires on the left is in the first place, for tires on the right is in the second place on the axle in the direction of travel



## Equipment

### Standard equipment

- |  |  |
|--|--|
| <ul style="list-style-type: none"> <li>• Storage compartments</li> <li>• Airbag: Head airbag front and rear outside</li> <li>• Anti-lock braking system (ABS)</li> <li>• Hill Start Assist</li> <li>• On-board computer</li> <li>• Roof design line, above, in chrome</li> <li>• Diesel particulate filter (DPF) maintenance-free</li> <li>• Electronic brake force distribution (EBD)</li> <li>• Driver information display, 3.5"</li> <li>• Electric front windows</li> <li>• Transmission: 6-speed manual transmission</li> <li>• Rear window wiper</li> <li>• Automatic climate control two zones</li> <li>• Front headrests</li> <li>• LED ambient lighting</li> <li>• LED daytime running lights</li> <li>• Headlight range adjustment, manual</li> <li>• Center armrest, front</li> <li>• Quickheat rapid heating system</li> <li>• Radio: Multimedia radio with 7" touchscreen color display, 6 speakers</li> <li>• Wheels: Light alloy wheels 6.5 J x 16 with tires 195/60 R16 (10 spokes)</li> <li>• Visual equipment</li> <li>• Seats: Seat backrest 60:40 split, foldable</li> <li>• Start/Stop system</li> <li>• Traction control (TC Plus)</li> <li>• Traffic Sign Assistant</li> <li>• Immobiliser</li> </ul> | <ul style="list-style-type: none"> <li>• Airbag for driver and passenger side</li> <li>• Airbag: Side airbag for driver and passenger side</li> <li>• Exterior mirrors for driver and passenger side electrically adjustable and heated</li> <li>• Brake light, third</li> <li>• Roof spoiler</li> <li>• tachometer</li> <li>• Electronic Stabilization Program (ESP - Plus)</li> <li>• Electric rear windows</li> <li>• Speed controller with limiter</li> <li>• Back window, heater</li> <li>• Interior lighting</li> <li>• Headrests (3) rear</li> <li>• Paintwork: Metallic special color Nautic Blue</li> <li>• LED headlights</li> <li>• Steering wheel: Leather steering wheel with chrome elements and steering wheel remote control</li> <li>• Upholstery: fabric/premium leather look</li> <li>• Radio: Digital radio reception DAB/DAB+/DMB-R</li> <li>• Tire repair kit</li> <li>• Tire pressure warning</li> <li>• Power steering</li> <li>• Seat belts: Three-point seat belts on all seats</li> <li>• Seats: Ergonomic active seat, (AGR) driver</li> <li>• Lane assistant</li> <li>• 12V socket in the center console</li> <li>• Underbody protection look, front and rear, in silver</li> <li>• Pre-installation for ISOFIX child seat retention system</li> <li>• Central locking with radio remote control</li> </ul> |
|--|--|

### Extra equipment

- |   |  |
|---|--|
| <ul style="list-style-type: none"> <li>• Delivery package</li> <li>• Navigation system: Multimedia Navi Pro with 8" touchscreen color display, voice control for audio, telephone, navigation</li> <li>• Solar Protect heat-insulating glazing (in the rear, heavily tinted)</li> </ul> | <ul style="list-style-type: none"> <li>• Navigation system: 180-degree panoramic rear view camera and Multimedia Navi Pro</li> <li>• Wheels: Light alloy wheels 6.5 J x 16 with all-season tires 195/60 R16, in BiColor/Black (10 spokes)</li> </ul> |
|---|--|

## Brief expert findings

Documents submitted	At the time of the inspection, the registration certificate Part 2 (letter) was available, but the registration certificate Part 1 (certificate) was not. (Copy)
VIN comparison	The vehicle identification number (VIN) was read from the vehicle and its conformity with the submitted documents was verified during the inspection by the undersigned.
Inspection	The inspection conditions were sufficient for the assessment of the vehicle. Lifting equipment and a pit were available for examining the vehicle.
Test drive	No test drive/maneuvering was carried out during the inspection of the vehicle.
Engine function test	An engine test run was performed.

## Value reducing factors



No.	Component group	Description
1	Wheel / tyres	Tyre - front - Does not meet the leasing specifications - No deduction
2	Electronic systems	Electronic systems (Parkleuchten) - Specify findings - Perform diagnosis
3	Roof	Roof - dent(s) - Smart repair
4	2nd wheel set	1 alloy rim - Scratched - Loss in value
5	Vehicle glazing	Rear window - Scratch(es) - Replace

## Wear and tear

No.	Component group	Description
1	Body	Body - Stone chips - No deduction
2	Body	Body - Scratch(es) - No deduction
3	Vehicle glazing	Windscreen - Stone chips - No deduction

The vehicle shows signs of wear commensurate with its age and use.

## Repainting

### No. Repainting

- 1 Door - front left side, Professionally carried out, Invoice of repair done Non-existent

## Paint coat thickness measurement

Door - front left side 197 µm

## Order/Scope of order

The order was placed to prepare a sales report for the vehicle described. This includes the following:

- Description of core relevant information about the vehicle
- Documentation of equipment features  
(Delivery by third-party service providers)
- Documentation of damage, defects, missing parts
- Documentation of previous damage, unrepaired previous damage, repainting
- a brief visual or functional inspection of the equipment details if possible.  
(Functional tests of driver assistance systems are not included in the scope of services!)
- a photo documentation of the vehicle

## Basis for the order

This product is based on the Alphabet Fuhrpark GmbH guidelines for vehicle returns and valuations. The expert makes the explicit findings in each individual case objectively within the framework of the specified standards based on his or her own expertise.

The vehicle inspection takes place in a disassembled state.

Damage or defects that can only be detected during disassembly/diagnosis work or through advanced knowledge remain within the scope of the prognosis risk. An extended risk exists for concealed defects caused by fraudulent deception and not identifiable by the expert.

Damage or defects resulting from normal use or wear and tear of the vehicle will be accepted according to the applicable standard.

There was no explicit identification or monetary consideration of the expected features within the product.

Features which in their nature and severity slightly exceed normal use but do not constitute unacceptable damage will be documented and identified under signs of use if necessary.

Damage or defects which, according to the underlying standard, can no longer be attributed to normal use or wear and tear are listed in the product under "Depreciating Factors".

Depending on the product specification, a monetary ID can be provided. If this takes place, the costs can be 100% d or pro rata depending on the vehicle's age and mileage.



## Previous damages

Apparently, no repaired previous damage could be found on the vehicle.

## Comments

- Winterradsatz ist kein Bestandteil des Auslieferungsumfangs





**Figure 1:** Diagonal front (left)



**Figure 2:** Diagonal front (right)



**Figure 3:** Diagonal rear (left)



**Figure 4:** Diagonal rear (right)



**Figure 5:** Interior - front



**Figure 6:** Interior - rear





Figure 7: Instrument cluster



Figure 8: Instrument panel



Figure 9: interior 360° view



Figure 10: Cargo area

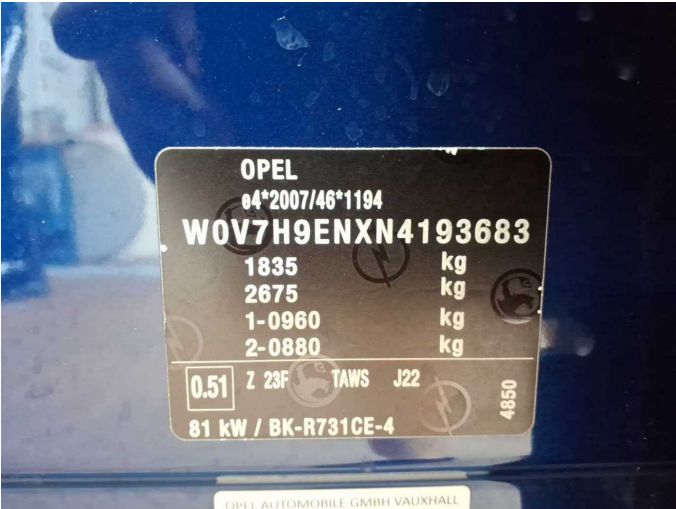


Figure 11: VIN



Figure 12: Mounted tyres



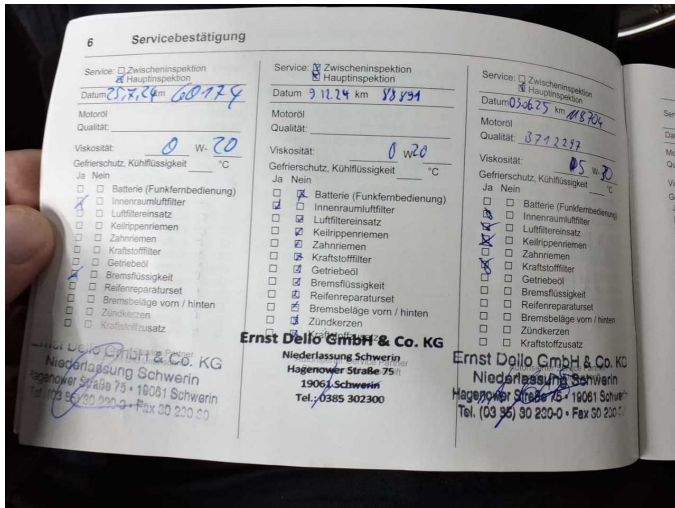


Figure 13: Documents

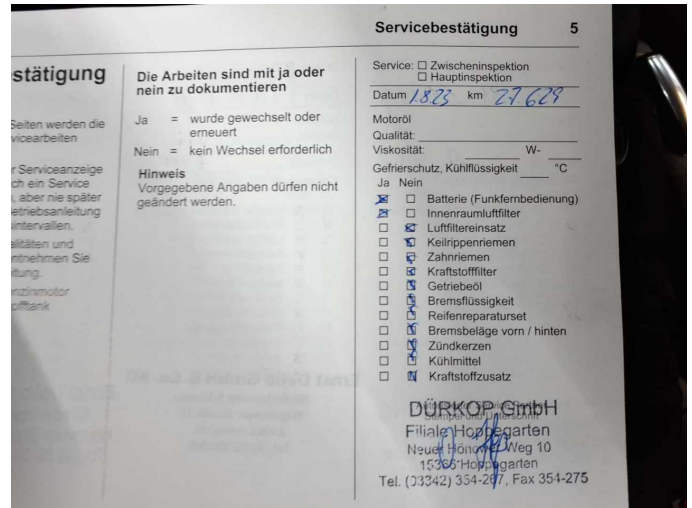


Figure 14: Documents



Figure 15: Documents

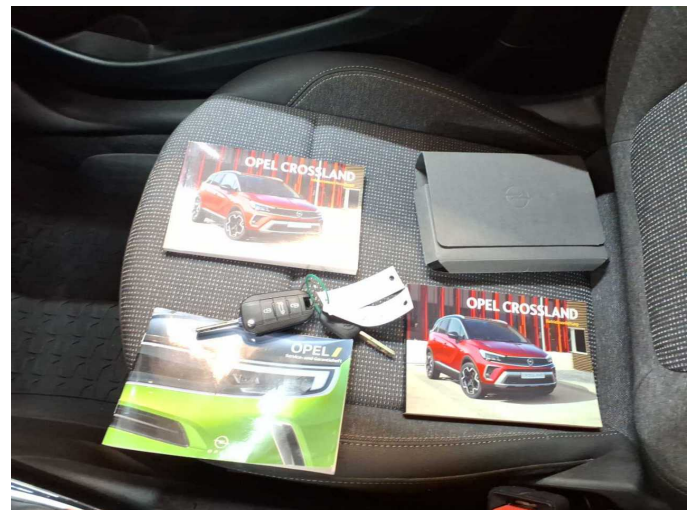


Figure 16: Documents



Figure 17: Additional tyres



Figure 18: Navigation





Figure 19: Misc.



Figure 20: Misc.



Figure 21: Misc.



Figure 22: Misc.



Figure 23: Misc.



Figure 24: Misc.





Figure 25: Misc.

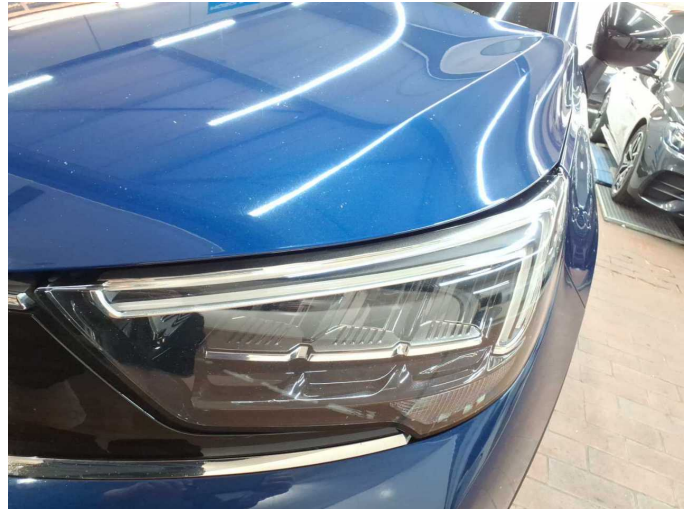


Figure 26: Misc.



Figure 27: Misc.



Figure 28: Misc.



Figure 29: Misc.



Figure 30: Misc.





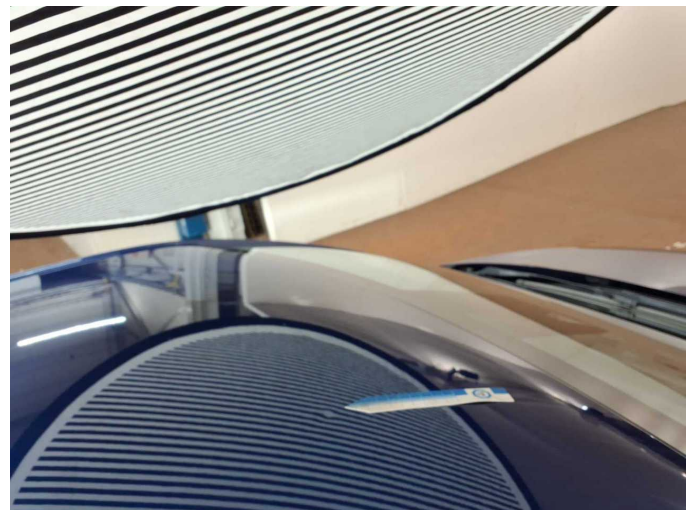
Figure 31: Misc.



Figure 32: Misc.



**Damage 2:** Electronic systems: Electronic systems (Parkleuchten) - Specify findings - Perform diagnosis



**Damage 3:** Roof: Roof - dent(s) - Smart repair

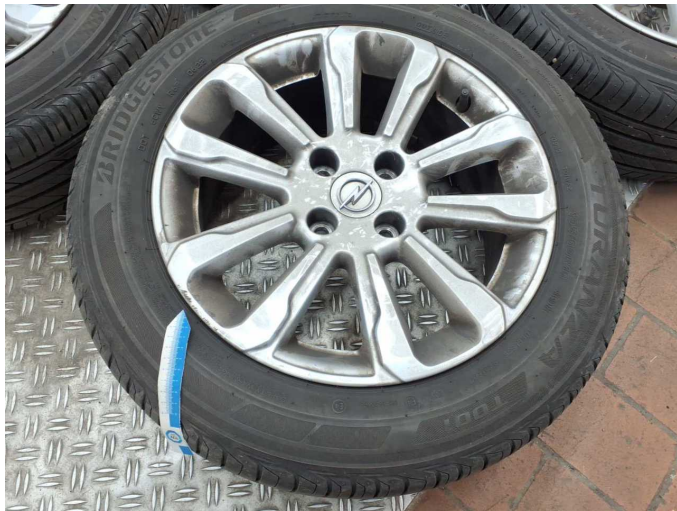


**Damage 3:** Roof: Roof - dent(s) - Smart repair



**Damage 4:** 2nd wheel set: 1 alloy rim - Scratched - Loss in value





**Damage 4:** 2nd wheel set: 1 alloy rim - Scratched - Loss in value



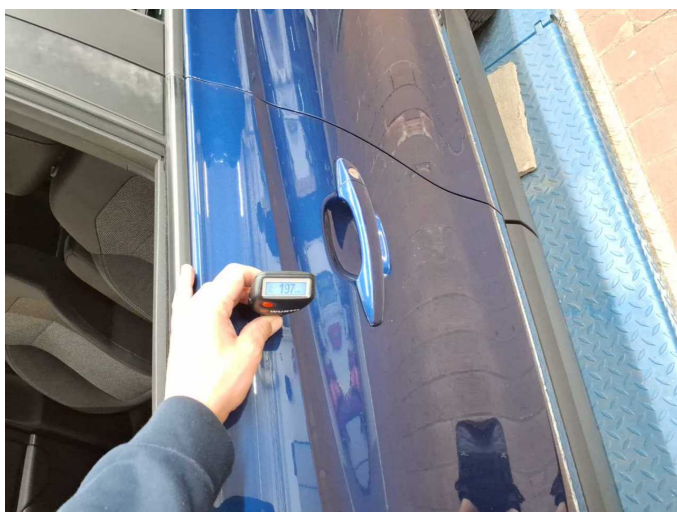
**Damage 5:** Vehicle glazing: Rear window - Scratch(es) - Replace



**Damage 5:** Vehicle glazing: Rear window - Scratch(es) - Replace



**Damage 5:** Vehicle glazing: Rear window - Scratch(es) - Replace



**Repainting 1:** Door - front left side



**Repainting 1:** Door - front left side



# Wartungshistorie

(gemäß Auftraggeber Informationen)

Fahrgestellnummer: W0V7H9ENXN4193683  
Hersteller / Modell: OPEL OPEL Crossland 1.5 Diesel Elegance

Datum	KM-Stand	Beschreibung
03.06.2025	118.704	Bremsklötze vorne; Bremsscheiben + Klötze v; Bremsscheiben vorne; Keilrippenriemen; Kraftstofffilter ern; Luftfiltereinsatz ern; Motoröl b. Wartung; Ölfilter ern; Regelwartungsdienst; Wartung Sonstiges
22.01.2025	92.468	Bremse Sonstiges; Bremsklötze hinten; Bremsscheiben hinten
16.01.2025	91.709	Getriebeöl ern/prüfen; Kupplung ern
10.12.2024	88.891	Motoröl b. Wartung; Ölfilter ern; Regelwartungsdienst; Wartung Sonstiges
24.07.2024	60.174	Bremsflüssigkeit; Kraftstofffilter ern; Luftfiltereinsatz ern; Motoröl b. Wartung; Ölfilter ern; Regelwartungsdienst; Wartung Sonstiges
01.08.2023	27.629	Motoröl b. Wartung; Ölfilter ern; Regelwartungsdienst; Wartung Sonstiges