



## OPEL Corsa Corsa 1.4 Turbo (ecoFLEX) Start/Stop

VIN NO W0V0XEP68J4261812  
Registration Number 68J4261812



MOT Date

2026-12-01

Last Service

2024-01-23

Number of Owners

3

Last Service Mileage

64897

Number of Keys

3

First Registration Date

2018-05-24

Odometer Reading

79473 km

Country First Registered

Germany

### Inspection Report Summary

Customer	BCA Online	Report Number	P20250605132423
Inspection Date / Place	2025-06-05 / BCA Oberndorf	Cosmetic Grade	2

### Vehicle Summary

Vehicle Condition	Runner	VAT Type	Margin
Fuel Type	Petrol	Road Worthy	Yes
Colour	White	Engine Size (cc)	1364
Engine Size	1.4	No of Doors	5
Body Type	Sedan	Drive Train	Front
Seat Colour		No of Seats	5
Seat Covering Name	Schwarz	Seat Covering	Cloth
Charging Cables		NEDC CO2 Rating (q/km)	125
Gearbox Type	Manual		

### Vehicle History & Documents

Service Book Available	Present	Next Service Mileage	km
Previous Usage		Imported	No
Manufacturer Warrenty			









Equipment

USB Socket	Anti-lock braking	Cruise control	Remote central locking
Stability control	CD Player	Leather steering wheel	Rear parking sensors
Airbag Status	Bluetooth telephone interface	Remote adjusting wing mirrors	Split folding rear seats
Xenon headlamps	Central locking	Radio	

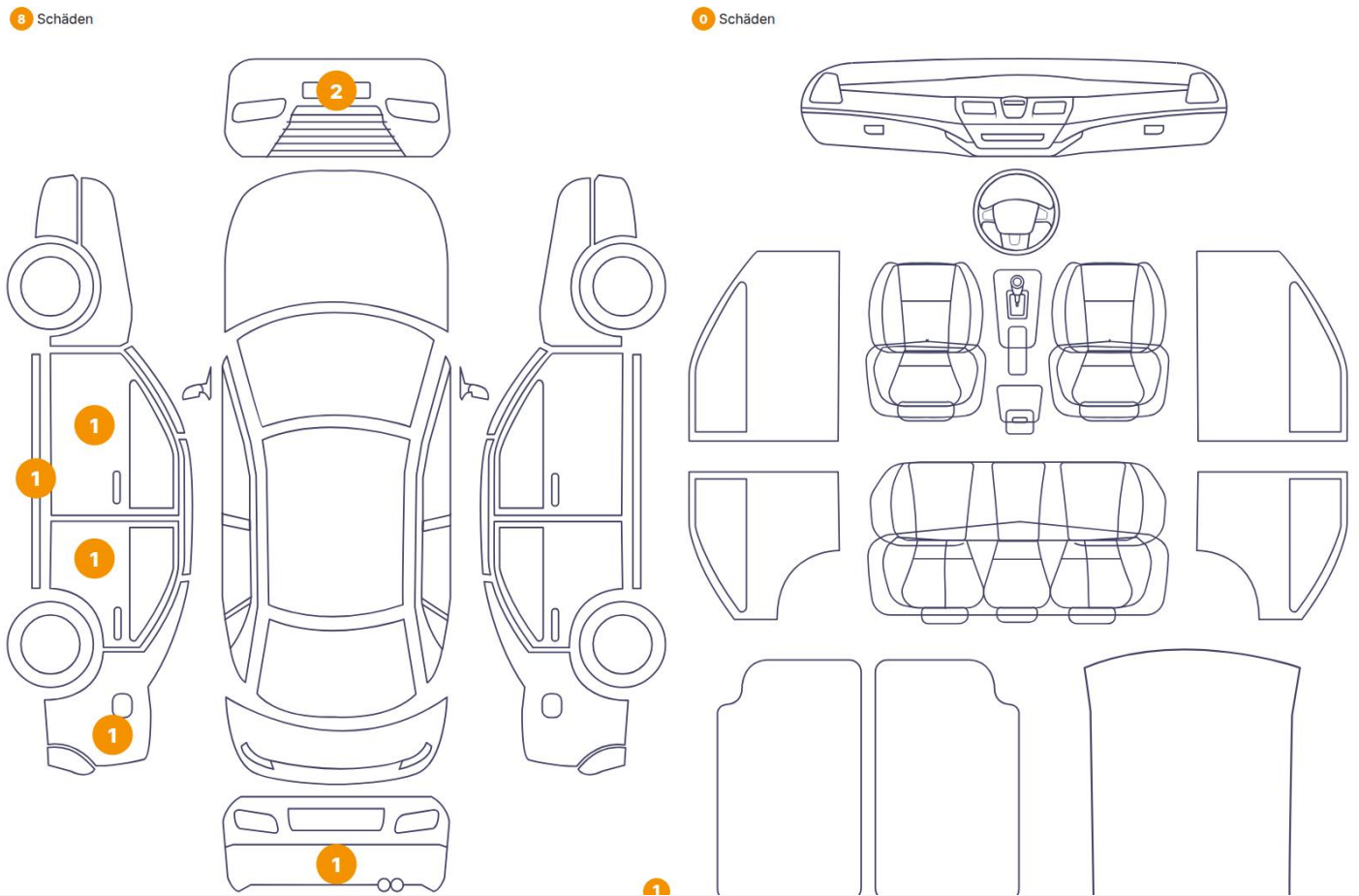
Equipment Details

Air Conditioning	Yes	Seat Heating	Front
------------------	-----	--------------	-------

Wheels & Tyres

Right Front Tyre Depth	7	Left Front Tyre Depth	7
Right Rear Tyre Depth	8	Left Rear Tyre Depth	8

Cosmetic Damage



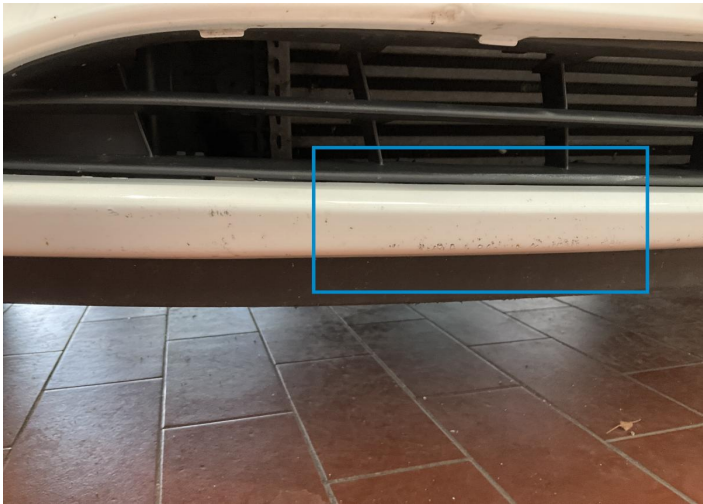




1. Anomalyon Element -



2. Blade/spoiler / Front Bodywork / Breakage -



3. Bumper / Front Paint / Scratch / Scuff -



4. Rocker Panel / Center Left Bodywork / Dent / Dent -



5. Door / Back Left Bodywork / Dent / Dent -



6. Door Edge / Back Left Bodywork / Dent / Dent -



7. Pillar / Front Left  
Bodywork / Dent / Dent -



8. Bumper / Back  
Paint / Scratch / Line -



## Mechanical Condition

### Control Lights

Display Defect	✓	Service Light	✓
ABS Warning Light	✓	ESP Fault/Traction Control Malfunction Light	✓
Airbag Warning Light	✓	Oil Pressure Warning Light	✓
Brake Warning Light	✓	Power Steering Warning Light	✓
Alternator / Battery	✓	No Dashboard Lights	✓

### Equipments Test

Central Locking	✓	Main & Spare Keys Functioning	✓
Electric Windows	✓	Audio Equipment	✓
Parking Sensors / Cameras Functioning	✓	AC / Heating System	✓
Other Equipments	✓		

### Engine

Engine Status / EML	✓	Engine Leak Visible	✓
Engine Starts	✓		

### Gearbox

Gear Box	✓
----------	---

### Levels

Brakes Fluid	✓	Coolant Fluid	✓
--------------	---	---------------	---

Test Drive Inspection

Steering Wheel			
Steering   Noise / Anomaly		✓	
Engine			
Engine Noise	✓	The Gears Scratch / Skip / Abnormal Operation	✓
Fume Quantity	✓	Power Loss	✓
Clutch			
Clutch Functioning		✓	
Brake			
Brake System Anomaly		✓	
General			
Test Driven Status		Not Performed	
✓ <i>No troubles detected, good condition or correct tests, according to vehicle age and mileage</i>			
! <i>Damages or malfunction detected that requires repairs by the buyer</i>			
NA <i>Not applicable</i>			
= <i>Not tested</i>			

Disclaimer

Please also note the "UserGuide condition report", which shows the scope of the vehicle description. [User Guide](#)