



OPEL Astra

Astra 2.0 CDTI DPF SportsTourer

VIN NO W0LPE8EN5F8073795

Registration Number N5F8073795



MOT Date



Last Service

2025-06-24

Number of Owners



Last Service Mileage

251257

Number of Keys



First Registration Date

2015-08-17

Odometer Reading



255980 km

Country First Registered



Inspection Report Summary

Customer	BCA Online	Report Number	P20250902155801
Inspection Date / Place	2025-09-02 / Dürkop Braunschweig	Cosmetic Grade	3

Vehicle Summary

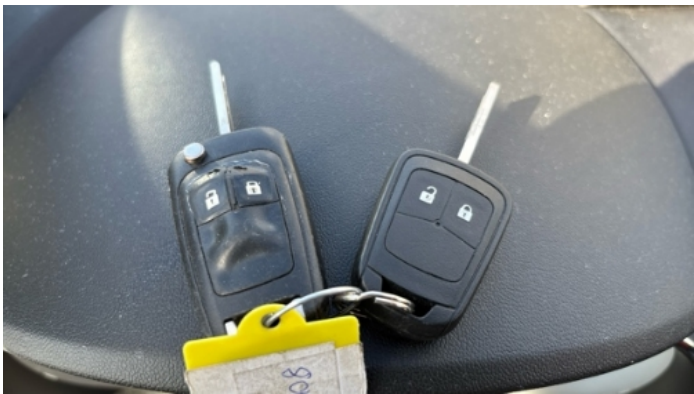
Vehicle Condition	Runner	VAT Type	Margin
Fuel Type	Diesel	Road Worthy	Yes
Colour	Black	Engine Size (cc)	1956
Engine Size	2.0	No of Doors	5
Body Type	Stationwagon / Estate	Drive Train	Front
Seat Colour		No of Seats	5
Seat Covering Name		Seat Covering	Cloth
Charging Cables		NEDC CO2 Rating (q/km)	129
Gearbox Type	Manual		

Vehicle History & Documents

Service Book Available	Present	Next Service Mileage	km
Previous Usage		Imported	No
Manufacturer Warrenty			







Equipment

Airbag Status	Anti-lock braking	Enhanced speaker system	Parking Assistance
Reversing Camera	Satellite navigation	Stability control	Central locking
Privacy glass	Rear parking sensors	Alloys wheels	Cruise control
Front parking sensors	Remote adjusting wing mirrors	Roof rails	Split folding rear seats
Xenon headlamps	Leather steering wheel	Radio	

Equipment Details

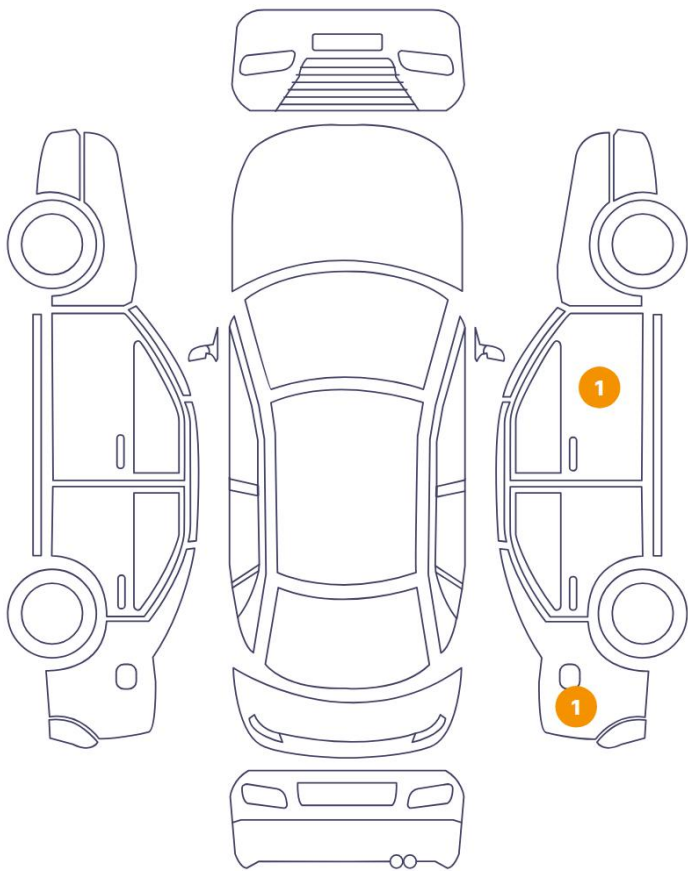
Air Conditioning	Climate Control	Alloy Wheel Size	17
Seat Heating	Front		

Wheels & Tyres

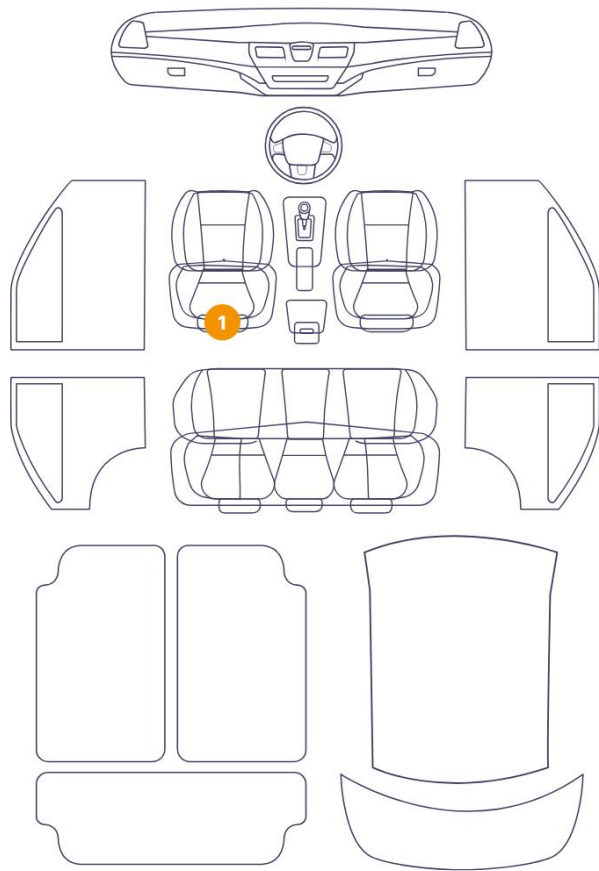
Right Front Tyre Depth	3	Left Front Tyre Depth	4
Right Rear Tyre Depth	4	Left Rear Tyre Depth	4

Cosmetic Damage

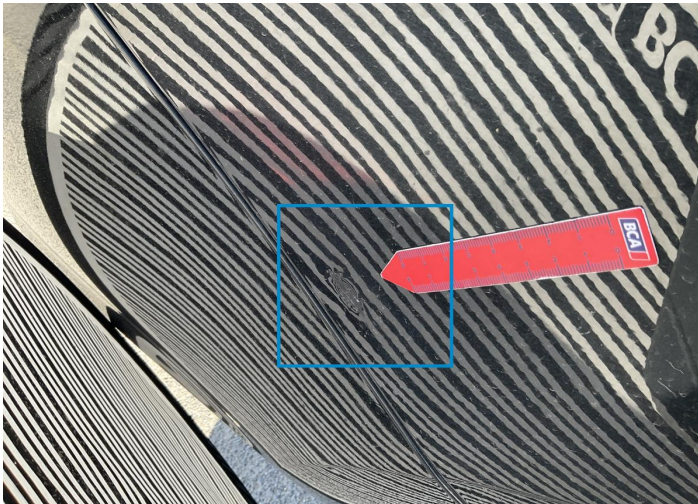
2 Schäden



1 Schäden



Component		Damage	Comments
1	Fender / Back Right	Bodywork / Dent / Dent	
2	Door / Front Right	Paint / Poor Previous Repair	
3	Seat / Front Left	Interior / Broken	



1. Fender / Back Right
Bodywork / Dent / Dent -



2. Door / Front Right
Paint / Poor Previous Repair -



3. Seat / Front Left
Interior / Broken -

Mechanical Condition

Control Lights

Display Defect	✓	Service Light	✓
ABS Warning Light	✓	ESP Fault/Traction Control Malfunction Light	✓
Airbag Warning Light	✓	Oil Pressure Warning Light	✓
Brake Warning Light	✓	Power Steering Warning Light	✓
Alternator / Battery	✓	All - wheel Drive	✓
No Dashboard Lights	✓	Tire Pressure Monitoring System	✓

Engine

Engine Starts	✓	Engine Status / EML	✓
Engine Leak Visible	✓		

Equipments Test

Central Locking	✓	Electric Windows	✓
Navigation System	✓	Audio Equipment	✓
Parking Sensors / Cameras Functioning	✓	AC / Heating System	✓

Gearbox

Gear Box	✓
----------	---

Levels

Brakes Fluid	✓	Coolant Fluid	✓
--------------	---	---------------	---

Test Drive Inspection

Steering Wheel			
Steering Noise / Anomaly		✓	
Engine			
Engine Noise	✓	The Gears Scratch / Skip / Abnormal Operation	✓
Fume Quantity	✓	Power Loss	✓
Clutch			
Clutch Functioning		✓	
Brake			
Brake System Anomaly		✓	
General			
Test Driven Status		NA	
✓ No troubles detected, good condition or correct tests, according to vehicle age and mileage			
! Damages or malfunction detected that requires repairs by the buyer			
NA Not applicable			
☐ Not tested			

Disclaimer

Please also note the "UserGuide condition report", which shows the scope of the vehicle description.

[User Guide](#)