



# OPEL Astra

## Astra 1.4 Turbo Sports Tourer

VIN NO W0LPE8ECXE8077029

Registration Number CXE8077029



MOT Date



Last Service

2025-06-05

Number of Owners



Last Service Mileage

156134

Number of Keys



First Registration Date

2014-09-05

Odometer Reading



158616 km

Country First Registered



### Inspection Report Summary

Customer	BCA Online	Report Number	P20250827141747
Inspection Date / Place	2025-08-27 / Dello Reinfeld	Cosmetic Grade	3

### Vehicle Summary

Vehicle Condition	Runner	VAT Type	Margin
Fuel Type	Petrol	Road Worthy	Yes
Colour	Black	Engine Size (cc)	1364
Engine Size	1.4	No of Doors	5
Body Type	Stationwagon / Estate	Drive Train	Front
Seat Colour		No of Seats	5
Seat Covering Name	Schwarz/Grau	Seat Covering	Cloth/Synthetic Leather
Charging Cables		NEDC CO2 Rating (q/km)	139
Gearbox Type	Manual		

### Vehicle History & Documents

Service Book Available	Present	Next Service Mileage	km
Previous Usage		Imported	No
Manufacturer Warrenty			







Equipment

Trip Computer	Airbag Status	Anti-lock braking	Bi Xenon Headlamps
Cruise control	Front parking sensors	Remote adjusting wing mirrors	Roof rails
Stability control	Leather steering wheel	Rear parking sensors	USB Socket
Alloys wheels	Auxiliary Socket	Bluetooth telephone interface	Front fog lamps
Headlamp wash/wipe	Remote central locking	Satellite navigation	CD Player

Radio

Equipment Details

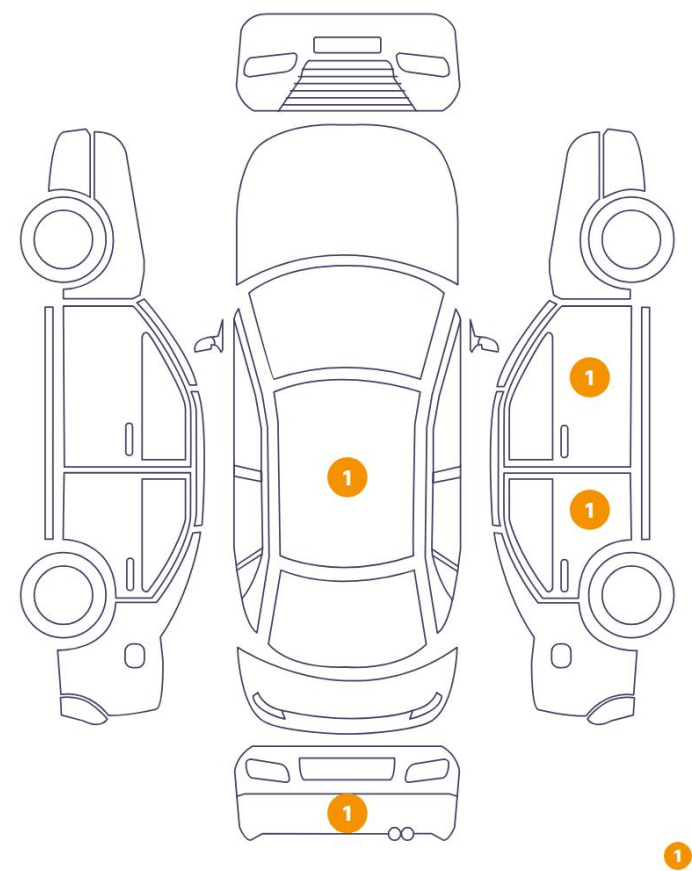
Air Conditioning	Dual Zone Climate Control	Alloy Wheel Size	18
Seat Heating	Front		

Wheels & Tyres

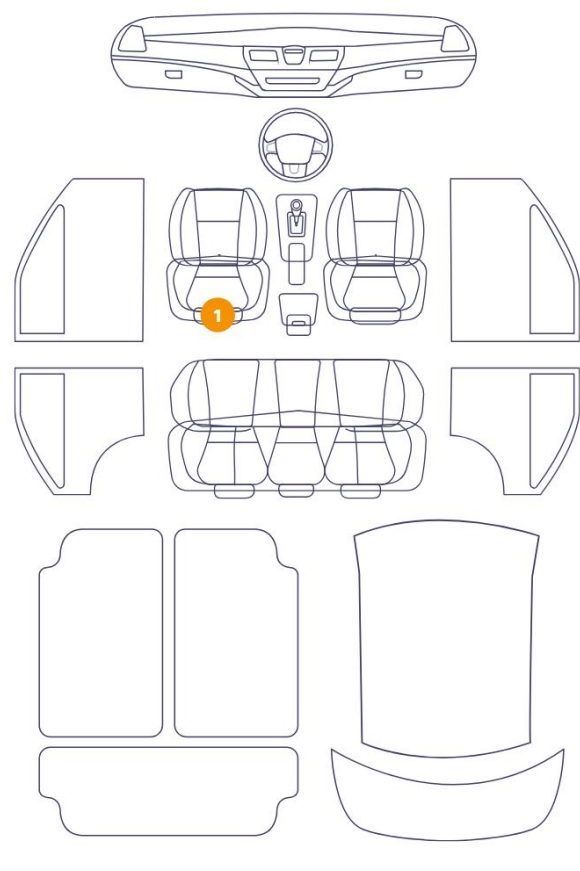
Right Front Tyre Depth	3	Left Front Tyre Depth	3
Right Rear Tyre Depth	4	Left Rear Tyre Depth	4

Cosmetic Damage

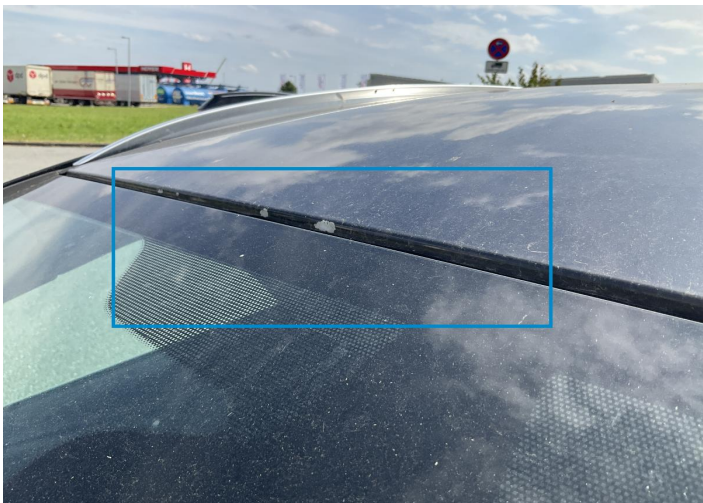
5 Schäden



1 Schäden



Component		Damage	Comments
1	Roof	Paint / Chipping	
2	Bumper / Back	Paint / Scratch / Scuff	
3	Door / Back Right	Paint / Scratch / Scuff	
4	Door / Front Right	Paint / Scratch / Scuff	
5	Other	Paint / Poor Previous Repair	
6	Seat / Front Left	Interior / Ripped	



1. Roof  
Paint / Chipping -



2. Bumper / Back  
Paint / Scratch / Scuff -



3. Door / Back Right  
Paint / Scratch / Scuff -



4. Door / Front Right  
Paint / Scratch / Scuff -



5.  
Paint / Poor Previous Repair -



6. Seat / Front Left  
Interior / Ripped -

## Mechanical Condition

### Control Lights

Display Defect	✓	Service Light	✓
ABS Warning Light	✓	ESP Fault/Traction Control Malfunction Light	✓
Airbag Warning Light	✓	Oil Pressure Warning Light	✓
Brake Warning Light	✓	Power Steering Warning Light	✓
Alternator / Battery	✓	No Dashboard Lights	✓
Tire Pressure Monitoring System	✓		

### Equipments Test

Central Locking	✓	Main & Spare Keys Functioning	✓
Electric Windows	✓	Navigation System	✓
Audio Equipment	✓	Parking Sensors / Cameras Functioning	✓
AC / Heating System	✓	Other Equipments	✓

### Engine

Engine Status / EML	✓	Engine Leak Visible	!
Engine Starts	✓		

### Gearbox

Gear Box	✓
----------	---

### Levels

Brakes Fluid	✓	Coolant Fluid	✓
--------------	---	---------------	---

Test Drive Inspection

Steering Wheel			
Steering   Noise / Anomaly		✓	
Engine			
Engine Noise	✓	The Gears Scratch / Skip / Abnormal Operation	✓
Fume Quantity	✓	Power Loss	✓
Clutch			
Clutch Functioning		✓	
Brake			
Brake System Anomaly		✓	
General			
Test Driven Status		NA	
✓ <i>No troubles detected, good condition or correct tests, according to vehicle age and mileage</i>			
! <i>Damages or malfunction detected that requires repairs by the buyer</i>			
NA <i>Not applicable</i>			
= <i>Not tested</i>			

Disclaimer

Please also note the "UserGuide condition report", which shows the scope of the vehicle description.

[User Guide](#)