



OPEL Astra

Astra 1.7 CDTI DPF ecoFLEX Start/Stop 99g

VIN NO W0LPE6EX8CG133897
Registration Number X8CG133897



MOT Date

2025-09-01

Last Service



Number of Owners

2

Last Service Mileage



Number of Keys

2

First Registration Date

2012-08-07

Odometer Reading

205656 km

Country First Registered

Germany

Inspection Report Summary

Customer	BCA Online	Report Number	P20251002094709
Inspection Date / Place	2025-10-02 / SULOJA Mönchengladbach	Cosmetic Grade	5

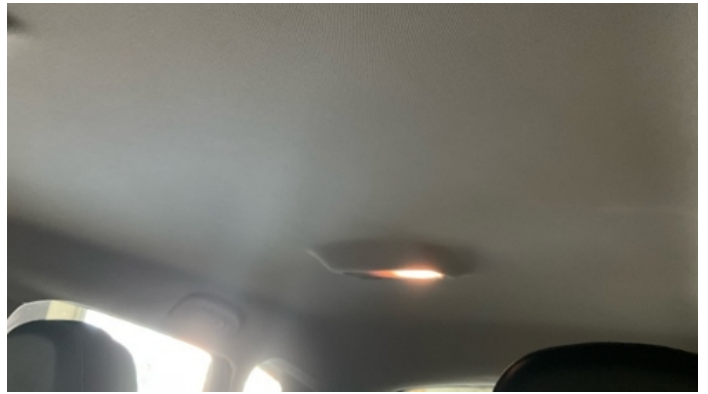
Vehicle Summary

Vehicle Condition	Runner	VAT Type	Margin
Fuel Type	Diesel	Road Worthy	Yes
Colour	Blue	Engine Size (cc)	1686
Engine Size	1.7	No of Doors	5
Body Type	Sedan	Drive Train	Front
Seat Colour		No of Seats	5
Seat Covering Name		Seat Covering	Leather
Charging Cables		NEDC CO2 Rating (q/km)	99
Gearbox Type	Manual		

Vehicle History & Documents

Service Book Available	-	Next Service Mileage	km
Previous Usage		Imported	No
Manufacturer Warranty			







Equipment

USB Socket	Alloys wheels	Auxiliary Socket	Cruise control
Digital Radio	Front parking sensors	Remote adjusting wing mirrors	Satellite navigation
Xenon headlamps	Leather steering wheel	Rear parking sensors	Airbag Status
Anti-lock braking	Bluetooth telephone interface	Diesel particulate filter	Front fog lamps
Headlamp wash/wipe	Remote central locking	Stability control	Central locking
Rain sensitive windscreen wipers			

Equipment Details

Alloy Wheel Size	17	Seat Heating	Front
------------------	----	--------------	-------

Wheels & Tyres

Right Front Tyre Depth	5	Left Front Tyre Depth	5
Right Rear Tyre Depth	5	Left Rear Tyre Depth	5

Cosmetic Damage

	Component	Damage	Comments
1	Bumper / Front	Bodywork / Breakage / Hole	
2	Blade/spoiler / Front	Bodywork / Breakage / Hole	
3	Fog Light / Front Left	Glass Break	
4	Door / Front Left	Bodywork / Dent / Dent	
5	Panel Filling / Front Left	Interior / Scratched	
6	Door / Front Left	Bodywork / Dent / Dent	
7	Door / Back Left	Paint / Poor Previous Repair	
8	Side Panel / Back Left	Paint / Poor Previous Repair	
9	Bumper / Back	Paint / Scratch / Scuff	
10	Side Panel / Back Right	Bodywork / Dent / Dent	
11	Rim / Back Right	Out of Bodywork / Scratch	
12	Door / Back Right	Bodywork / Dent / Dent	
13	Door / Front Right	Bodywork / Dent / Dent	
14	Rim / Front Right	Out of Bodywork / Scratch	
15	Bumper / Back	Bodywork / Dent / Dent	
16	Hood	Bodywork / Dent / Dent	



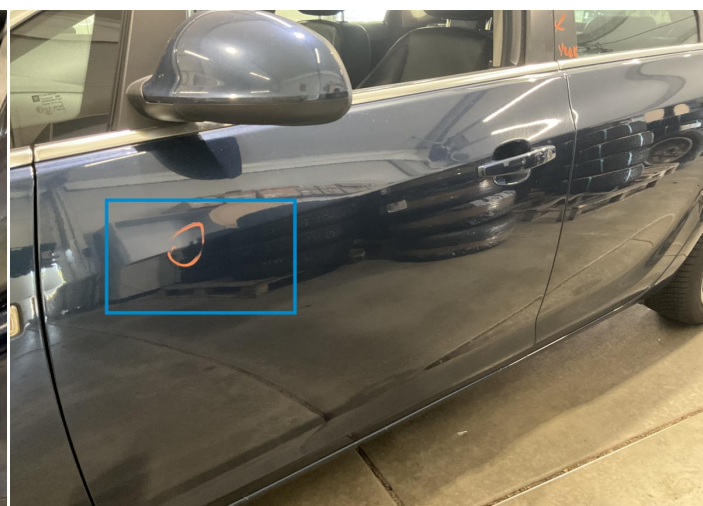
1. Bumper / Front
Bodywork / Breakage / Hole -



2. Blade/spoiler / Front
Bodywork / Breakage / Hole -



3. Fog Light / Front Left
Glass Break -



4. Door / Front Left
Bodywork / Dent / Dent -



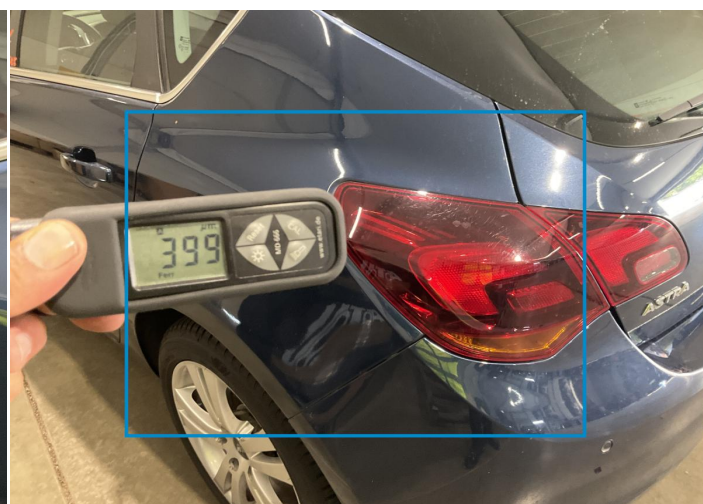
5. Panel Filling / Front Left
Interior / Scratched -



6. Door / Front Left
Bodywork / Dent / Dent -



7. Door / Back Left
Paint / Poor Previous Repair -



8. Side Panel / Back Left
Paint / Poor Previous Repair -



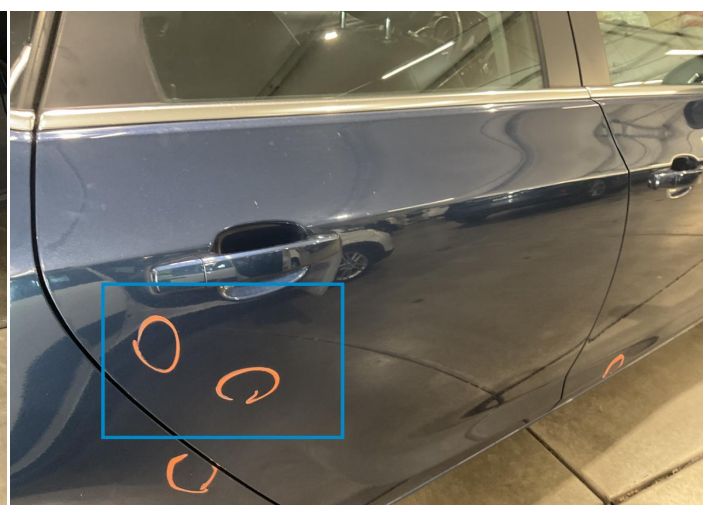
9. Bumper / Back
Paint / Scratch / Scuff -



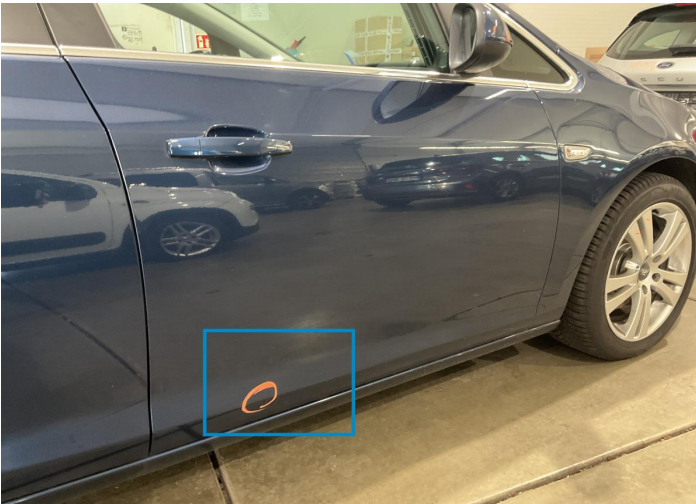
10. Side Panel / Back Right
Bodywork / Dent / Dent -



11. Rim / Back Right
Out of Bodywork / Scratch -



12. Door / Back Right
Bodywork / Dent / Dent -



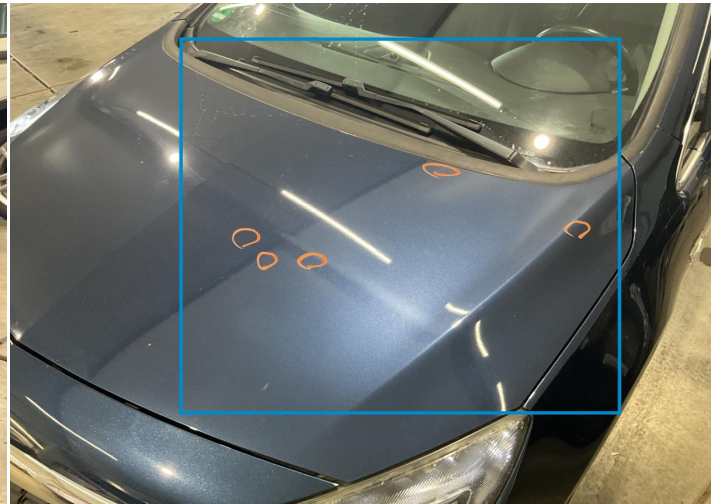
13. Door / Front Right
Bodywork / Dent / Dent -



14. Rim / Front Right
Out of Bodywork / Scratch -



15. Bumper / Back
Bodywork / Dent / Dent -



16. Hood
Bodywork / Dent / Dent -

Mechanical Condition

Equipments Test

Central Locking	✓	Electric Windows	✓
Audio Equipment	✓	AC / Heating System	✓
Main & Spare Keys Functioning	✓	Navigation System	✓
Parking Sensors / Cameras Functioning	✓	Other Equipments	✓

Control Lights

ABS Warning Light	✓	ESP Fault/Traction Control Malfunction Light	✓
Diesel Particulate Filter Light	✓	Airbag Warning Light	✓
Oil Pressure Warning Light	✓	Brake Warning Light	✓
Power Steering Warning Light	✓	Alternator / Battery	✓
No Dashboard Lights	✓	Display Defect	✓

Engine

Engine Status / EML	✓	Engine Leak Visible	✓
Engine Starts	✓		

Gearbox

Gear Box	✓
----------	---

Levels

Brakes Fluid	✓	Coolant Fluid	✓
--------------	---	---------------	---

Test Drive Inspection

Steering Wheel

Steering | Noise / Anomaly ✓

Engine

Engine Noise ✓ The Gears Scratch / Skip / Abnormal Operation ✓

Fume Quantity ✓ Power Loss ✓

Brake

Brake System Anomaly ✓

Clutch

Clutch Functioning ✓

General

Test Driven Status Not Performed

- ✓ No troubles detected, good condition or correct tests, according to vehicle age and mileage
- ! Damages or malfunction detected that requires repairs by the buyer
- NA Not applicable
- ☐ Not tested

Disclaimer

Please also note the "UserGuide condition report", which shows the scope of the vehicle description. [User Guide](#)