



# OPEL Astra

## Astra 2.0 CDTI DPF Sports Tourer

VIN NO W0LPD8EN6D8020376  
Registration Number N6D8020376



MOT Date	Number of Owners	Number of Keys	Odometer Reading
2025-12-01	3	2	210289 km
Last Service	Last Service Mileage	First Registration Date	Country First Registered
-	-	2012-11-27	Germany

### Inspection Report Summary

Customer	BCA Online	Report Number	P20250908120120
Inspection Date / Place	2025-09-08 / SULOJA Mönchengladbach	Cosmetic Grade	5

### Vehicle Summary

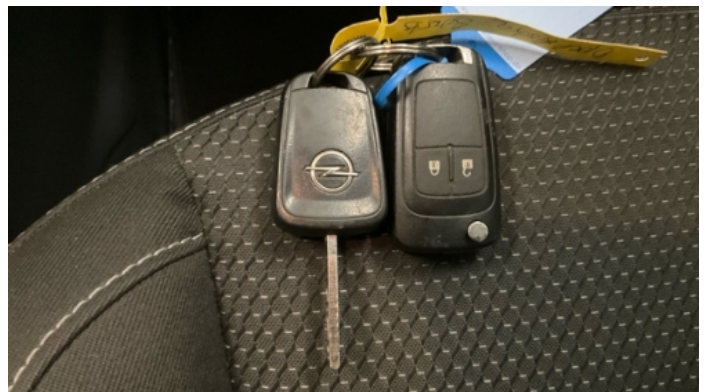
Vehicle Condition	Runner	VAT Type	Margin
Fuel Type	Diesel	Road Worthy	Yes
Colour	Brown	Engine Size (cc)	1956
Engine Size	2.0	No of Doors	5
Body Type	Stationwagon / Estate	Drive Train	Front
Seat Colour		No of Seats	5
Seat Covering Name		Seat Covering	Cloth
Charging Cables		NEDC CO2 Rating (q/km)	129
Gearbox Type	Manual		

### Vehicle History & Documents

Service Book Available	-	Next Service Mileage	km
Previous Usage		Imported	No
Manufacturer Warrenty			









## Equipment

Tinted Glass	Airbag Status	Anti-lock braking	Bluetooth telephone interface
Diesel particulate filter	Remote adjusting wing mirrors	Roof rails	Central locking
Radio	Tow ball	Alloys wheels	Auxiliary Socket
Cruise control	Front fog lamps	Remote central locking	Stability control
Leather steering wheel	Rear parking sensors		

## Equipment Details

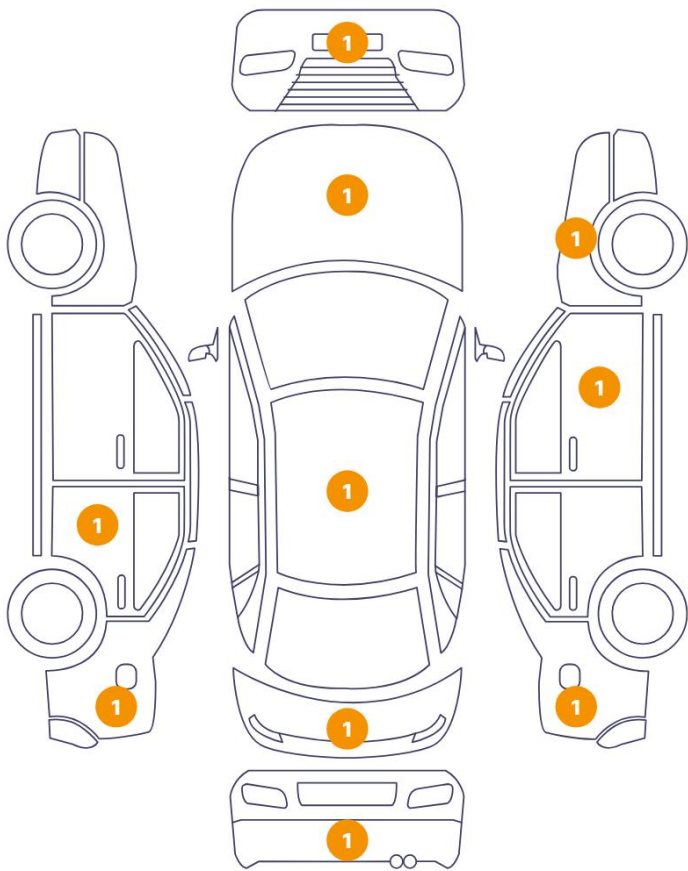
Tow Ball Type	Detachable	Air Conditioning	Yes
Alloy Wheel Size	17		

## Wheels & Tyres

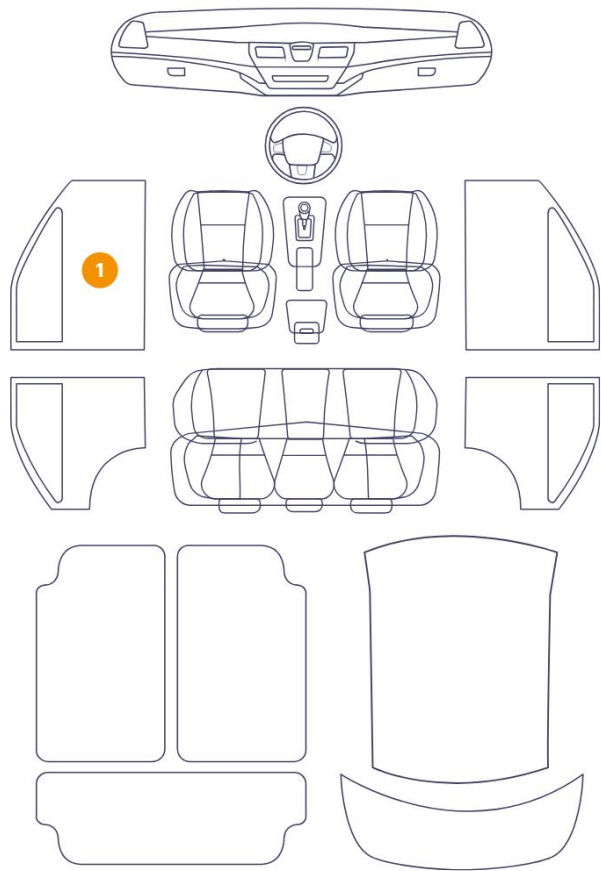
Right Front Tyre Depth	5	Left Front Tyre Depth	5
Right Rear Tyre Depth	5	Left Rear Tyre Depth	5

Cosmetic Damage

10 Schäden

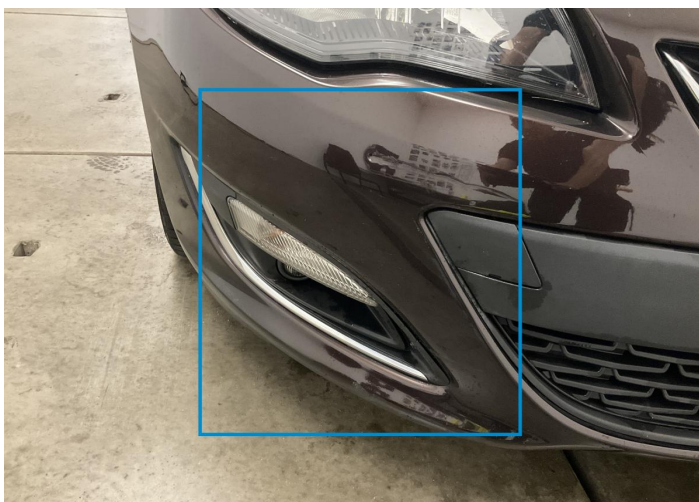


1 Schäden



Component		Damage	Comments
1	Corner Bumper / Front Right	Bodywork / Breakage / Hole	
2	Hood	Bodywork / Dent / Dent	
3	Door / Back Left	Paint / Scratch / Scuff	
4	Side Panel / Back Left	Paint / Scratch / Scuff	
5	Tailgate	Bodywork / Dent / Dent	
6	Bumper / Back	Paint / Scratch / Scuff	
7	Roof	Bodywork / Dent / Dent	
8	Side Panel / Back Right	Bodywork / Breakage / Hole	
9	Door / Front Right	Paint / Scratch / Scuff	
10	Fender / Front Right	Bodywork / Dent / Dent	
11	Panel Filling / Front Left	Interior / Scratched	





1. Corner Bumper / Front Right  
Bodywork / Breakage / Hole -



2. Hood  
Bodywork / Dent / Dent -



3. Door / Back Left  
Paint / Scratch / Scuff -



4. Side Panel / Back Left  
Paint / Scratch / Scuff -



5. Tailgate  
Bodywork / Dent / Dent -



6. Bumper / Back  
Paint / Scratch / Scuff -





7. Roof  
Bodywork / Dent / Dent -



8. Side Panel / Back Right  
Bodywork / Breakage / Hole -



9. Door / Front Right  
Paint / Scratch / Scuff -



10. Fender / Front Right  
Bodywork / Dent / Dent -



11. Panel Filling / Front Left  
Interior / Scratched -



## Mechanical Condition

### Control Lights

ABS Warning Light	✓	ESP Fault/Traction Control Malfunction Light	✓
Diesel Particulate Filter Light	✓	Airbag Warning Light	✓
Oil Pressure Warning Light	✓	Brake Warning Light	✓
Power Steering Warning Light	✓	Alternator / Battery	✓
No Dashboard Lights	✓	Display Defect	✓
Service Light	!		

### Engine

Engine Status / EML	✓	Engine Leak Visible	✓
Engine Starts	✓		

### Gearbox

Gear Box	✓
----------	---

### Equipments Test

AC / Heating System	✓	Central Locking	✓
Main & Spare Keys Functioning	✓	Electric Windows	✓
Audio Equipment	✓	Parking Sensors / Cameras Functioning	✓
Other Equipments	✓		

### Levels

Brakes Fluid	✓	Coolant Fluid	✓
--------------	---	---------------	---

## Test Drive Inspection

Steering Wheel			
Steering   Noise / Anomaly		✓	
Engine			
Engine Noise	✓	The Gears Scratch / Skip / Abnormal Operation	✓
Fume Quantity	✓	Power Loss	✓
Brake			
Brake System Anomaly		✓	
Clutch			
Clutch Functioning		✓	
General			
Test Driven Status		Not Performed	
✓ <i>No troubles detected, good condition or correct tests, according to vehicle age and mileage</i>			
! <i>Damages or malfunction detected that requires repairs by the buyer</i>			
NA <i>Not applicable</i>			
= <i>Not tested</i>			

## Disclaimer

*Please also note the "UserGuide condition report", which shows the scope of the vehicle description.*

[User Guide](#)