



# OPEL Astra

## Astra 1.4 Turbo Sports Tourer

VIN NO W0LPD8ECXC8101572  
Registration Number CXC8101572



MOT Date	Number of Owners	Number of Keys	Odometer Reading
2027-03-01	2	2	183308 km
Last Service	Last Service Mileage	First Registration Date	Country First Registered
-	-	2012-09-10	-

### Inspection Report Summary

Customer	BCA Online	Report Number	P20250805105629
Inspection Date / Place	2025-08-05 / BCA Berlin	Cosmetic Grade	4

### Vehicle Summary

Vehicle Condition	Runner	VAT Type	Margin
Fuel Type	Petrol	Gearbox Type	Manual
Colour	White	Engine Size (cc)	1364
Engine Size	1.4	No of Doors	5
Body Type	Stationwagon / Estate	Drive Train	Front
Seat Colour		No of Seats	5
Charging Cables		NEDC CO2 Rating (q/km)	144

### Vehicle History & Documents

Service Book Available	-	Next Service Mileage	km
Previous Usage		Imported	No
Manufacturer Warrenty			









Equipment

Tinted Glass	Airbag Status	Anti-lock braking	Front fog lamps
Heated wing mirrors	Remote central locking	Stability control	Leather steering wheel
Rear parking sensors	Trip Computer	Alloys wheels	Cruise control
Front parking sensors	Remote adjusting wing mirrors	Roof rails	CD Player
Radio			

Equipment Details

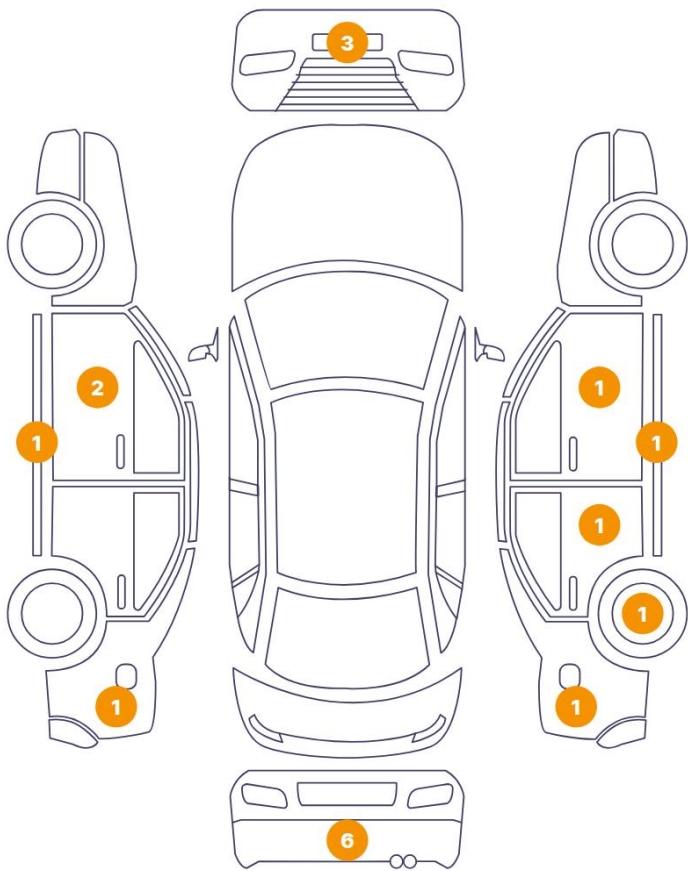
Air Conditioning	Dual Zone Climate Control	Alloy Wheel Size	17
Seat Heating	Front		

Wheels & Tyres

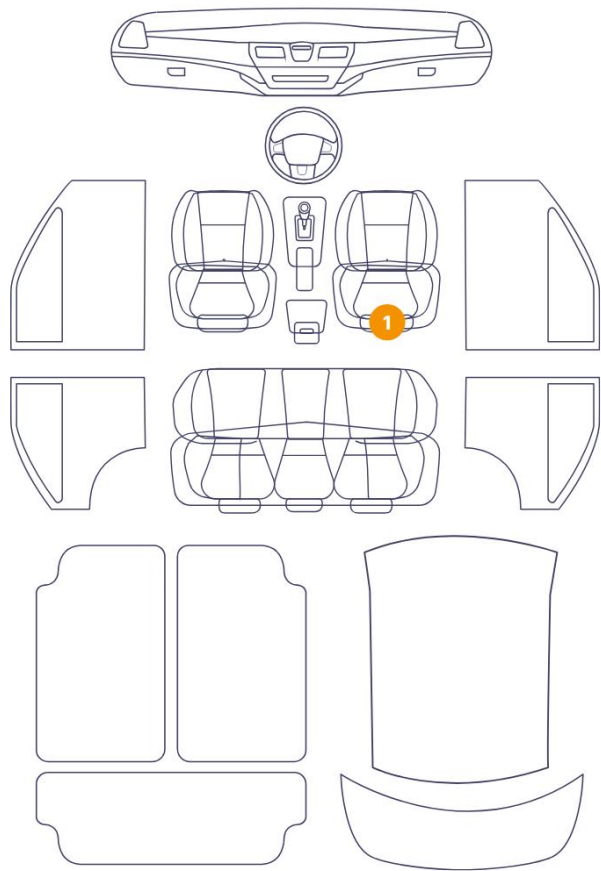
Right Front Tyre Depth	6	Left Front Tyre Depth	6
Right Rear Tyre Depth	5	Left Rear Tyre Depth	5

Cosmetic Damage

18 Schäden



1 Schäden



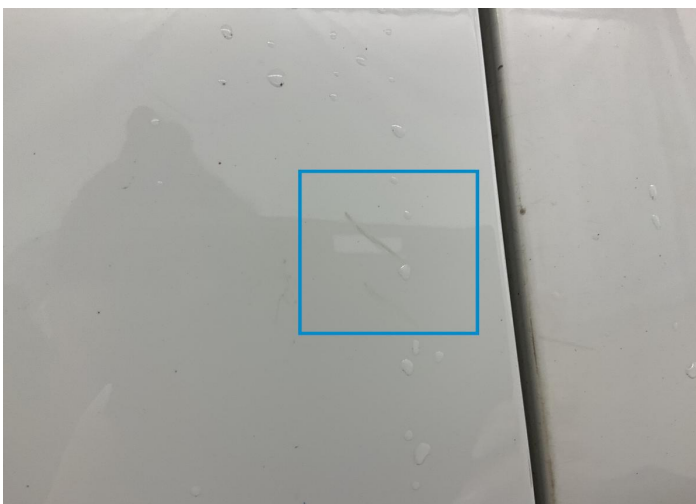
Component		Damage	Comments
1	Rocker Panel / Center Left	Paint / Scratch / Scuff	
2	Door / Front Left	Paint / Scratch / Scuff	
3	Door / Front Left	Paint / Scratch / Scuff	
4	Side Panel / Back Left	Paint / Scratch / Line	
5	Bumper / Back	Paint / Scratch / Scuff	
6	Bumper / Back	Paint / Scratch / Line	
7	Bumper / Back	Paint / Scratch / Scuff	
8	Bumper / Back	Paint / Scratch / Scuff	
9	Bumper / Back	Paint / Scratch / Scuff	
10	Bumper / Back	Paint / Scratch / Scuff	
11	Rim / Back Right	Out of Bodywork / Scratch	
12	Door / Back Right	Paint / Scratch / Scuff	

13	Side Panel / Back Right	Paint / Scratch / Scuff
14	Door / Front Right	Paint / Scratch / Scuff
15	Rocker Panel / Center Right	Paint / Scratch / Scuff
16	Bumper / Front	Bodywork / Dent / Deformation
17	Bumper / Front	Paint / Scratch / Scuff
18	Bumper / Front	Paint / Scratch / Scuff
19	Seat / Front Right	Interior / Dirty





1. Rocker Panel / Center Left  
Paint / Scratch / Scuff -



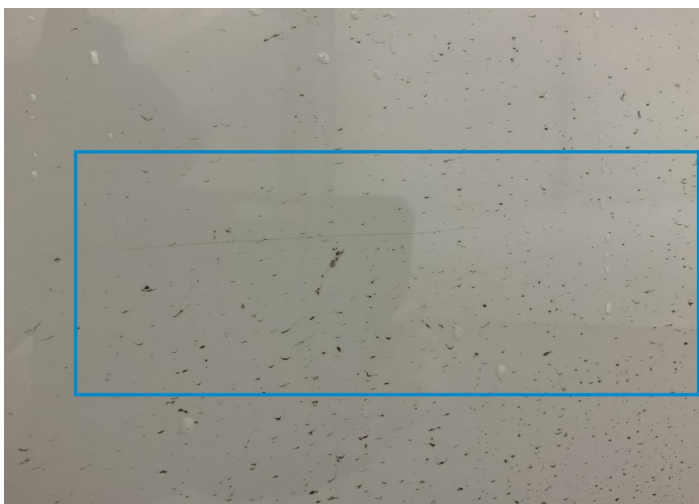
2. Door / Front Left  
Paint / Scratch / Scuff -



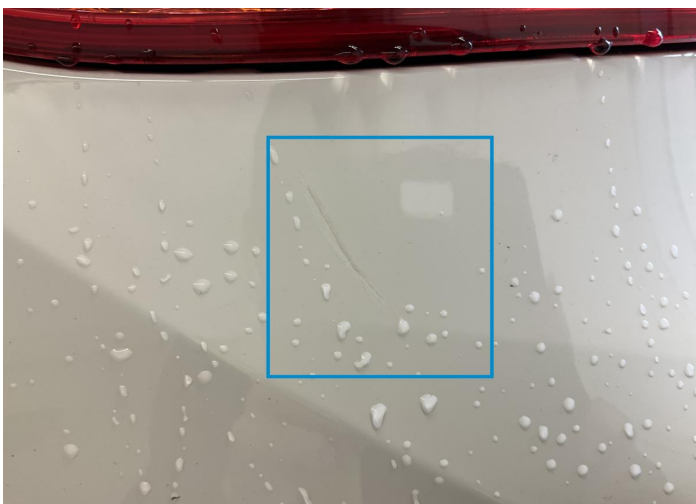
3. Door / Front Left  
Paint / Scratch / Scuff -



4. Side Panel / Back Left  
Paint / Scratch / Line -

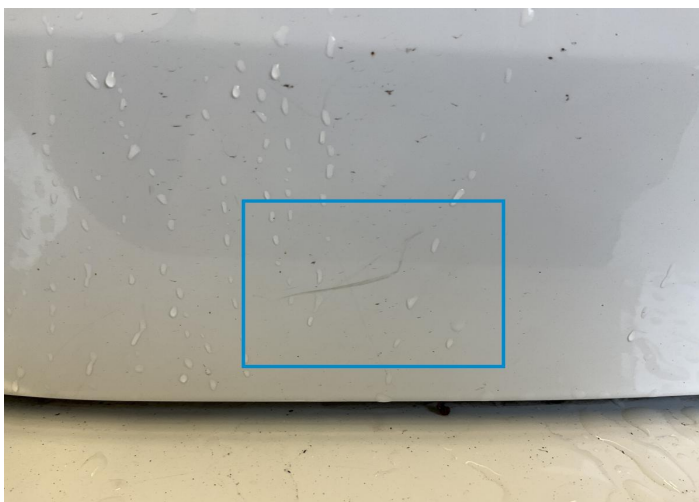


5. Bumper / Back  
Paint / Scratch / Scuff -



6. Bumper / Back  
Paint / Scratch / Line -





7. Bumper / Back  
Paint / Scratch / Scuff -



8. Bumper / Back  
Paint / Scratch / Scuff -



9. Bumper / Back  
Paint / Scratch / Scuff -



10. Bumper / Back  
Paint / Scratch / Scuff -



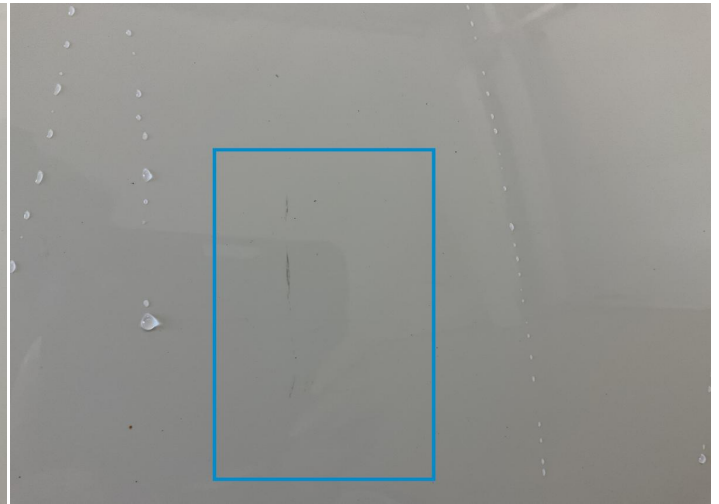
11. Rim / Back Right  
Out of Bodywork / Scratch -



12. Door / Back Right  
Paint / Scratch / Scuff -



13. Side Panel / Back Right  
Paint / Scratch / Scuff -



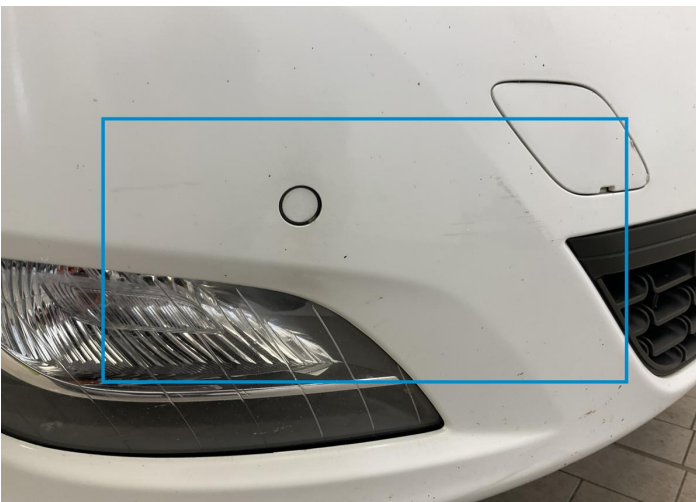
14. Door / Front Right  
Paint / Scratch / Scuff -



15. Rocker Panel / Center Right  
Paint / Scratch / Scuff -



16. Bumper / Front  
Bodywork / Dent / Deformation -



17. Bumper / Front  
Paint / Scratch / Scuff -



18. Bumper / Front  
Paint / Scratch / Scuff -



19. Seat / Front Right  
Interior / Dirty -

## Mechanical Condition

### Control Lights

Display Defect	✓	ABS Warning Light	✓
ESP Fault/Traction Control Malfunction Light	✓	Airbag Warning Light	✓
Oil Pressure Warning Light	✓	Brake Warning Light	✓
Power Steering Warning Light	✓	Alternator / Battery	✓
No Dashboard Lights	✓	Tire Pressure Monitoring System	✓

### Engine

Engine Starts	✓	Engine Status / EML	✓
Engine Leak Visible	✓		

### Gearbox

Gear Box	✓
----------	---

### Equipments Test

Electric Windows	✓	Audio Equipment	✓
AC / Heating System	✓	Other Equipments	✓
Main & Spare Keys Functioning	✓	Parking Sensors / Cameras Functioning	✓

### Levels

Brakes Fluid	✓	Coolant Fluid	✓
--------------	---	---------------	---



## Test Drive Inspection

Steering Wheel			
Steering   Noise / Anomaly		✔	
Engine			
Engine Noise	✔	The Gears Scratch / Skip / Abnormal Operation	✔
Fume Quantity	✔	Power Loss	✔
Brake			
Brake System Anomaly		✔	
Clutch			
Clutch Functioning		✔	
General			
Test Driven Status		✔	
✔ <i>No troubles detected, good condition or correct tests, according to vehicle age and mileage</i>			
! <i>Damages or malfunction detected that requires repairs by the buyer</i>			
NA <i>Not applicable</i>			
= <i>Not tested</i>			

## Disclaimer

Please also note the "UserGuide condition report", which shows the scope of the vehicle description.

[User Guide](#)