



OPEL Astra

Astra 1.4 Turbo Sports Tourer

VIN NO W0LPD8ECXC8101572
Registration Number CXC8101572



MOT Date	Number of Owners	Number of Keys	Odometer Reading
2027-03-01	2	2	183308 km
Last Service	Last Service Mileage	First Registration Date	Country First Registered
-	-	2012-09-10	-

Inspection Report Summary

Customer	BCA Online	Report Number	P20250805105629
Inspection Date / Place	2025-08-05 / BCA Berlin	Cosmetic Grade	4

Vehicle Summary

Vehicle Condition	Runner	VAT Type	Margin
Fuel Type	Petrol	Gearbox Type	Manual
Colour	White	Engine Size (cc)	1364
Engine Size	1.4	No of Doors	5
Body Type	Stationwagon / Estate	Drive Train	Front
Seat Colour		No of Seats	5
Charging Cables		NEDC CO2 Rating (q/km)	144

Vehicle History & Documents

Service Book Available	-	Next Service Mileage	km
Previous Usage		Imported	No
Manufacturer Warrenty			







Equipment

Tinted Glass	Airbag Status	Anti-lock braking	Front fog lamps
Heated wing mirrors	Remote central locking	Stability control	Leather steering wheel
Rear parking sensors	Trip Computer	Alloys wheels	Cruise control
Front parking sensors	Remote adjusting wing mirrors	Roof rails	CD Player
Radio			

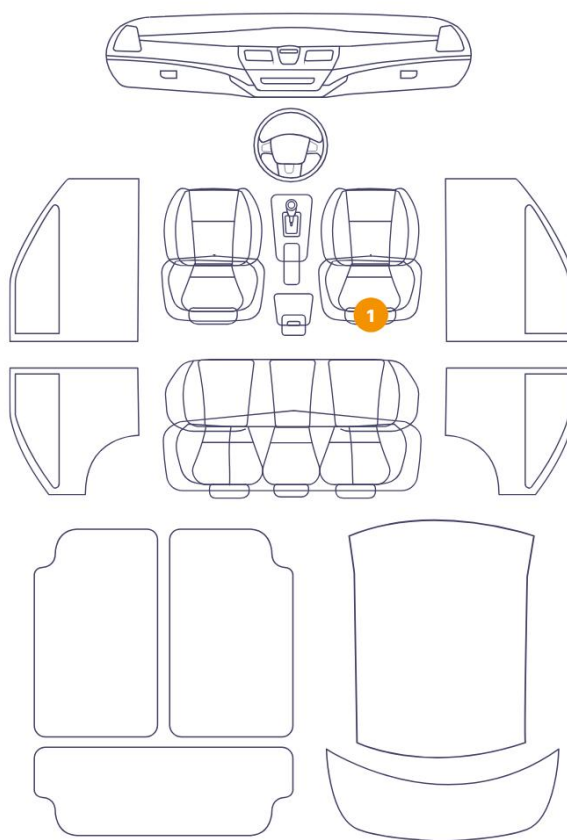
Equipment Details

Air Conditioning	Dual Zone Climate Control	Alloy Wheel Size	17
Seat Heating	Front		

Wheels & Tyres

Right Front Tyre Depth	6	Left Front Tyre Depth	6
Right Rear Tyre Depth	5	Left Rear Tyre Depth	5

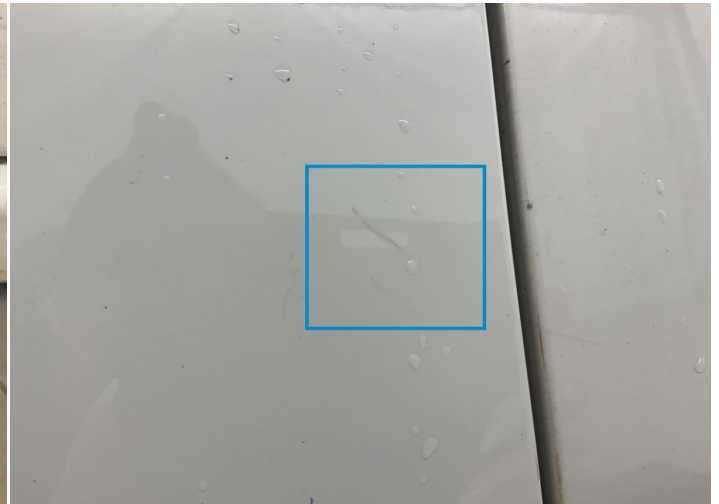
1 Schäden

6/13 - Report Number P20250805105629

14	Door / Front Right	Paint / Scratch / Scuff
15	Rocker Panel / Center Right	Paint / Scratch / Scuff
16	Bumper / Front	Bodywork / Dent / Deformation
17	Bumper / Front	Paint / Scratch / Scuff
18	Bumper / Front	Paint / Scratch / Scuff
19	Seat / Front Right	Interior / Dirty



1. Rocker Panel / Center Left
Paint / Scratch / Scuff -



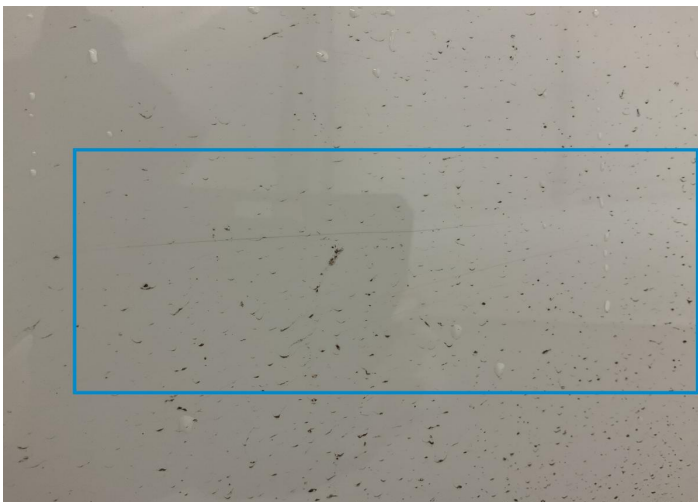
2. Door / Front Left
Paint / Scratch / Scuff -



3. Door / Front Left
Paint / Scratch / Scuff -



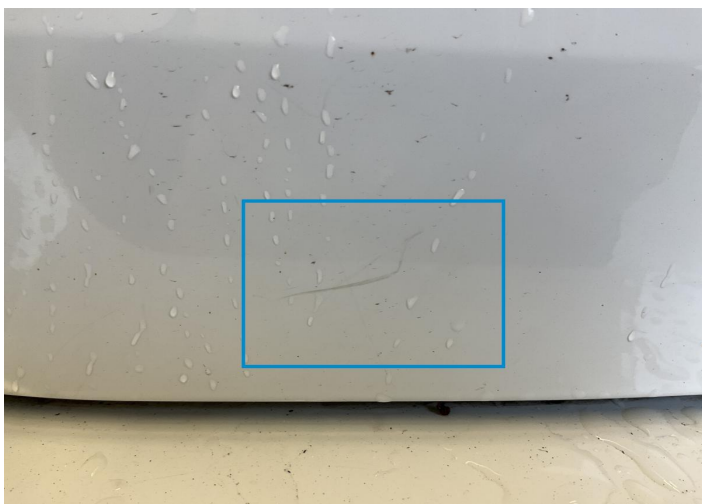
4. Side Panel / Back Left
Paint / Scratch / Line -



5. Bumper / Back
Paint / Scratch / Scuff -



6. Bumper / Back
Paint / Scratch / Line -



7. Bumper / Back
Paint / Scratch / Scuff -



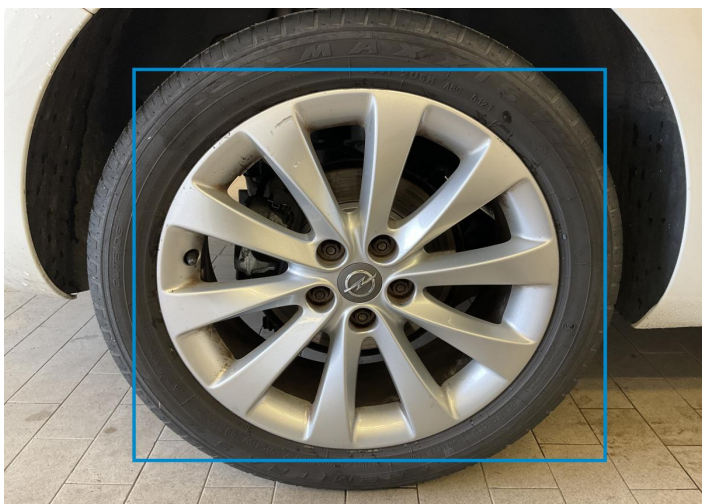
8. Bumper / Back
Paint / Scratch / Scuff -



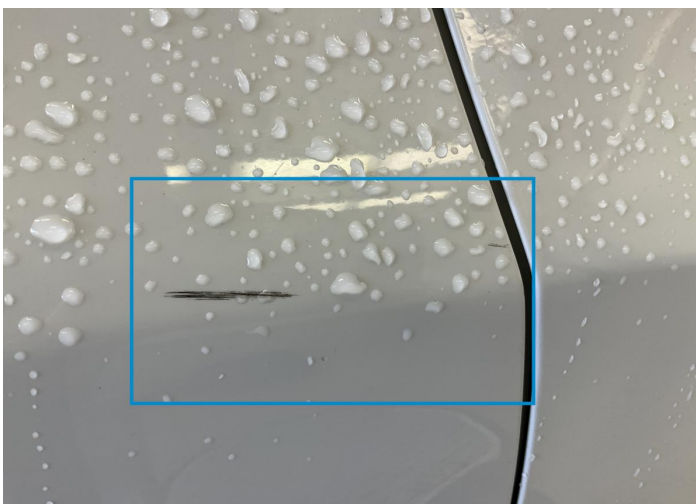
9. Bumper / Back
Paint / Scratch / Scuff -



10. Bumper / Back
Paint / Scratch / Scuff -



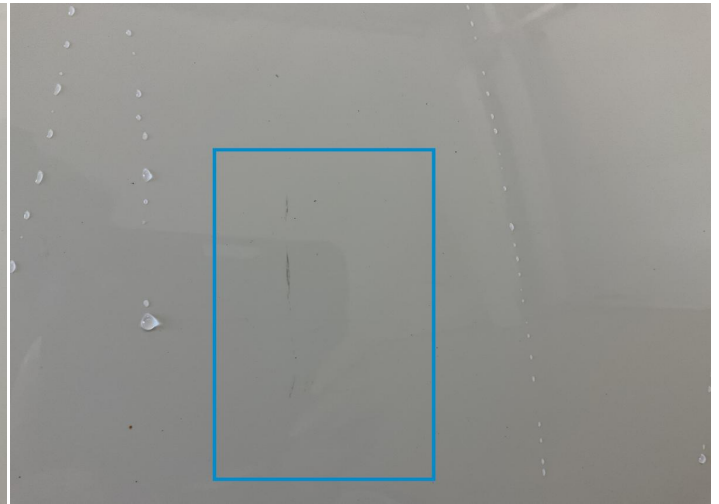
11. Rim / Back Right
Out of Bodywork / Scratch -



12. Door / Back Right
Paint / Scratch / Scuff -



13. Side Panel / Back Right
Paint / Scratch / Scuff -



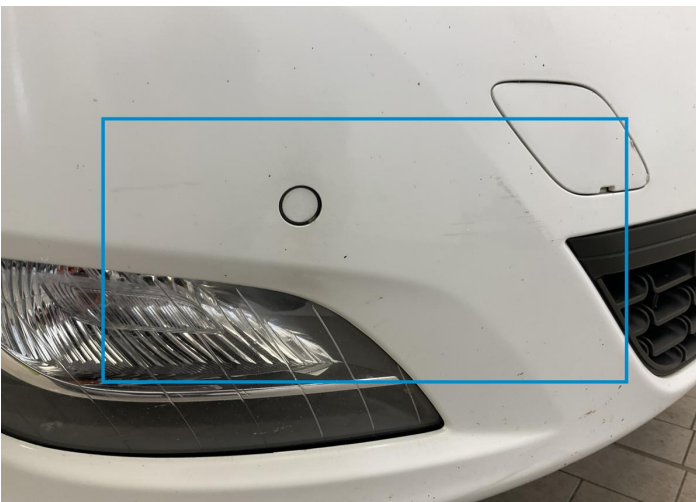
14. Door / Front Right
Paint / Scratch / Scuff -



15. Rocker Panel / Center Right
Paint / Scratch / Scuff -



16. Bumper / Front
Bodywork / Dent / Deformation -



17. Bumper / Front
Paint / Scratch / Scuff -



18. Bumper / Front
Paint / Scratch / Scuff -



19. Seat / Front Right
Interior / Dirty -

Mechanical Condition

Control Lights

Display Defect	✓	ABS Warning Light	✓
ESP Fault/Traction Control Malfunction Light	✓	Airbag Warning Light	✓
Oil Pressure Warning Light	✓	Brake Warning Light	✓
Power Steering Warning Light	✓	Alternator / Battery	✓
No Dashboard Lights	✓	Tire Pressure Monitoring System	✓

Equipments Test

Other Equipments	✓	Main & Spare Keys Functioning	✓
Electric Windows	✓	Audio Equipment	✓
Parking Sensors / Cameras Functioning	✓	AC / Heating System	✓

Engine

Engine Starts	✓	Engine Status / EML	✓
Engine Leak Visible	✓		

Gearbox

Gear Box	✓
----------	---

Levels

Brakes Fluid	✓	Coolant Fluid	✓
--------------	---	---------------	---

Test Drive Inspection

Steering Wheel			
Steering Noise / Anomaly		✔	
Engine			
Engine Noise	✔	The Gears Scratch / Skip / Abnormal Operation	✔
Fume Quantity	✔	Power Loss	✔
Clutch			
Clutch Functioning		✔	
Brake			
Brake System Anomaly		✔	
General			
Test Driven Status		✔	
✔ No troubles detected, good condition or correct tests, according to vehicle age and mileage			
! Damages or malfunction detected that requires repairs by the buyer			
NA Not applicable			
= Not tested			

Disclaimer

Please also note the "UserGuide condition report", which shows the scope of the vehicle description.

[User Guide](#)