



OPEL Mokka X
Mokka X 1.4 (ecoFLEX) ECOTEC Start/Stop

VIN NO W0LJD7E81HB050887
Registration Number 81HB050887



MOT Date	Number of Owners	Number of Keys	Odometer Reading
2026-12-01	2	2	144614 km
Last Service	Last Service Mileage	First Registration Date	Country First Registered
2024-11-07	130553	2017-02-22	Germany

Inspection Report Summary

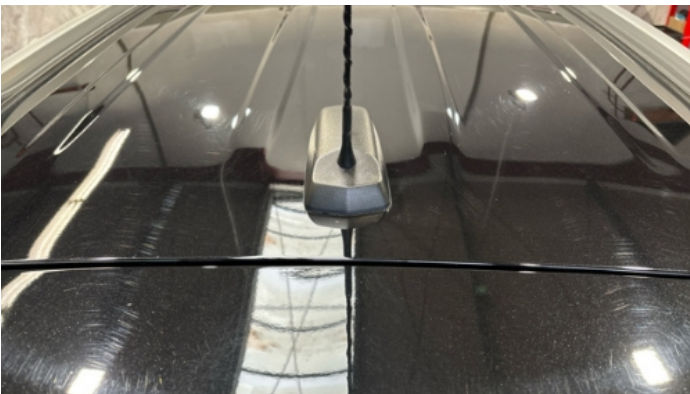
Customer	BCA Online	Report Number	P20250929100831
Inspection Date / Place	2025-09-29 / BCA Oberndorf	Cosmetic Grade	2

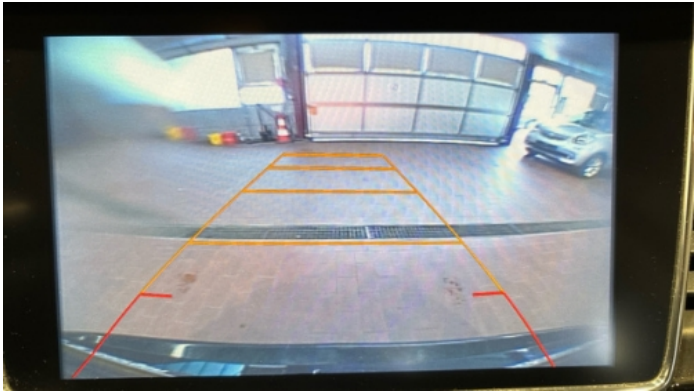
Vehicle Summary

Vehicle Condition	Runner	VAT Type	Margin
Fuel Type	Petrol	Road Worthy	Yes
Colour	Black	Engine Size (cc)	1364
Engine Size	1.4	No of Doors	5
Body Type	SUV	Drive Train	Front
Seat Colour		No of Seats	5
Seat Covering Name	Schwarz	Seat Covering	Cloth/Synthetic Leather
Charging Cables		NEDC CO2 Rating (q/km)	147
Gearbox Type	Manual		

Vehicle History & Documents

Service Book Available	Present	Next Service Mileage	km
Previous Usage		Imported	No
Manufacturer Warrenty			







Equipment

Tinted Glass	Airbag Status	Anti-lock braking	Bluetooth telephone interface
Front fog lamps	Remote adjusting wing mirrors	Reversing Camera	Satellite navigation
Stability control	Electrically folding wing mirrors	LED Headlamps	Rear parking sensors
USB Socket	Alloys wheels	Auxiliary Socket	Cruise control
Front parking sensors	Remote central locking	Roof rails	Split folding rear seats
Central locking	Leather steering wheel	Radio	

Equipment Details

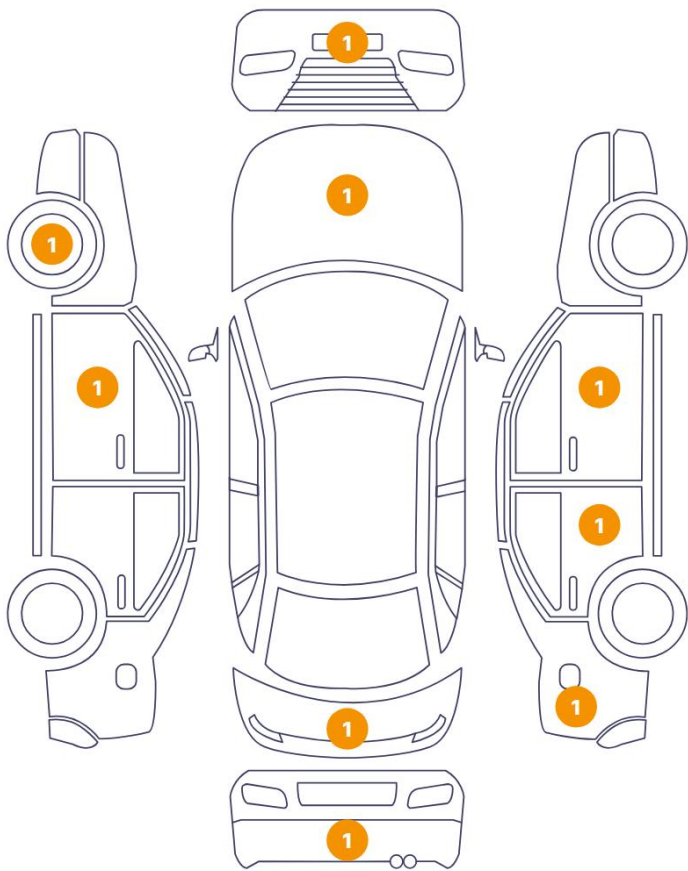
Air Conditioning	Dual Zone Climate Control	Alloy Wheel Size	19
Extra Wheel / Tyre Set	Winter Tyres - Alloy	Seat Heating	Front

Wheels & Tyres

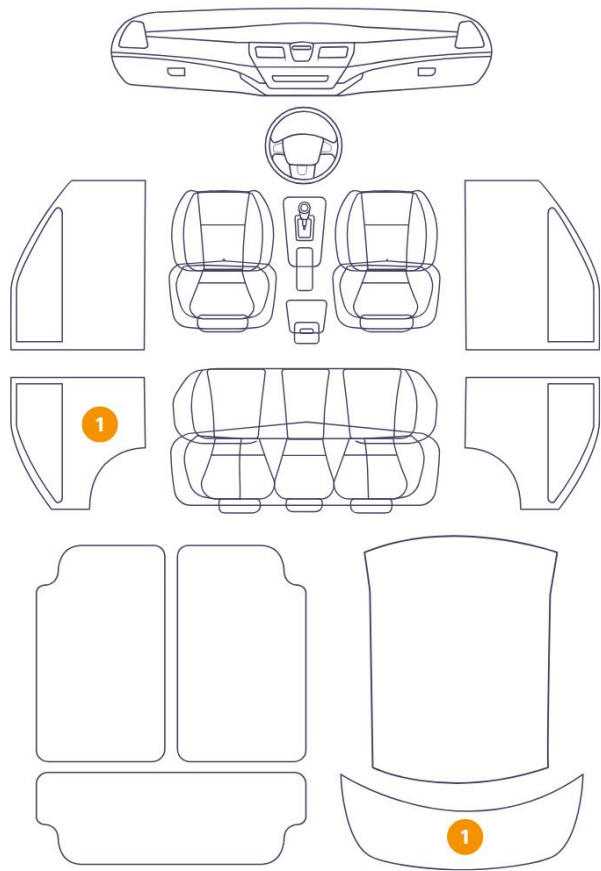
Right Front Tyre Depth	4	Left Front Tyre Depth	4
Right Rear Tyre Depth	5	Left Rear Tyre Depth	5
Extra Wheel - 1 Tyre Depth	7	Extra Wheel - 2 Tyre Depth	7
Extra Wheel - 3 Tyre Depth	6	Extra Wheel - 4 Tyre Depth	6

Cosmetic Damage

9 Schäden



2 Schäden



Component		Damage	Comments
1	Blade/spoiler / Front	Paint / Scratch / Line	
2	Rim / Front Left	Out of Bodywork / Scratch	
3	Mirror / Front Left	Paint / Stone Chip	
4	Panel Filling / Back Left	Interior / Scratched	
5	Bumper / Back	Paint / Scratch / Line	
6	Tailgate	Paint / Scratch / Line	
7	Trunk Upholstery / Back	Interior / Scratched	
8	Wing Stick / Back Right	Paint / Scratch / Scuff	
9	Door / Back Right	Bodywork / Dent / Dent	
10	Mirror / Front Right	Paint / Stone Chip	
11	Hood	Bodywork / Dent / Dent	



1. Blade/spoiler / Front
Paint / Scratch / Line -



2. Rim / Front Left
Out of Bodywork / Scratch -



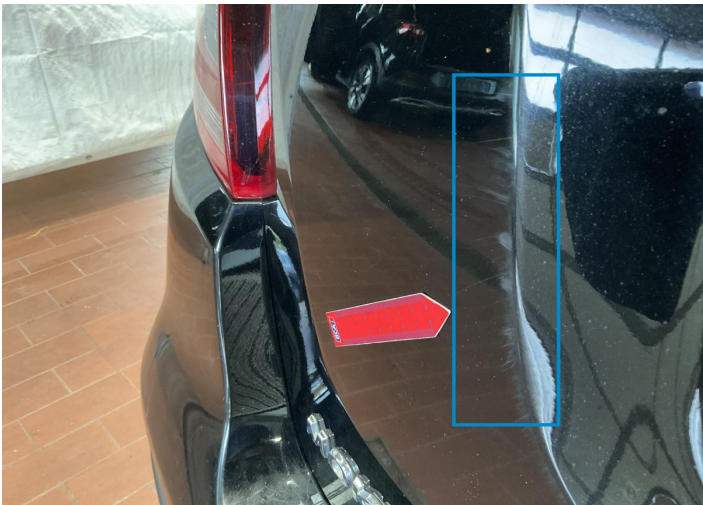
3. Mirror / Front Left
Paint / Stone Chip -



4. Panel Filling / Back Left
Interior / Scratched -



5. Bumper / Back
Paint / Scratch / Line -



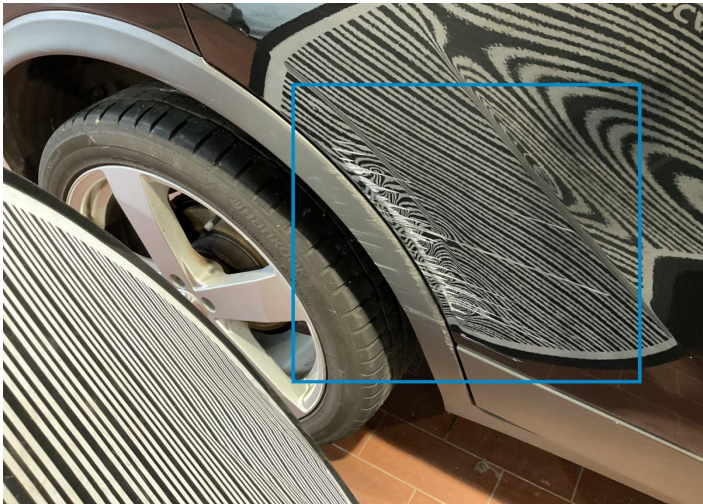
6. Tailgate
Paint / Scratch / Line -



7. Trunk Upholstery / Back Interior / Scratched -



8. Wing Stick / Back Right Paint / Scratch / Scuff -



9. Door / Back Right Bodywork / Dent / Dent -



10. Mirror / Front Right Paint / Stone Chip -



11. Hood Bodywork / Dent / Dent -

Mechanical Condition

Control Lights

Display Defect	✓	Service Light	✓
ABS Warning Light	✓	ESP Fault/Traction Control Malfunction Light	✓
Airbag Warning Light	✓	Oil Pressure Warning Light	✓
Brake Warning Light	✓	Power Steering Warning Light	✓
Alternator / Battery	✓	No Dashboard Lights	✓
Tire Pressure Monitoring System	!		

Equipments Test

Central Locking	✓	Main & Spare Keys Functioning	✓
Electric Windows	✓	Audio Equipment	✓
Parking Sensors / Cameras Functioning	✓	AC / Heating System	✓
Other Equipments	✓		

Engine

Engine Status / EML	✓	Engine Leak Visible	!
Engine Starts	✓		

Gearbox

Gear Box	✓
----------	---

Levels





Brakes Fluid	✓	Coolant Fluid	✓
--------------	---	---------------	---

Test Drive Inspection


Steering Wheel

Steering | Noise / Anomaly 

Engine

Engine Noise		The Gears Scratch / Skip / Abnormal Operation	
Fume Quantity		Power Loss	

Clutch





Clutch Functioning 

Brake

Brake System Anomaly 

General

Test Driven Status Not Performed

-  **No troubles detected, good condition or correct tests, according to vehicle age and mileage**
-  **Damages or malfunction detected that requires repairs by the buyer**
-  **Not applicable**
-  **Not tested**

Disclaimer

Please also note the "UserGuide condition report", which shows the scope of the vehicle description. [User Guide](#)