



OPEL Insignia

Insignia 2.0 Turbo Sports Tourer Automatik

VIN NO W0LGT8GD9C1059848
Registration Number D9C1059848



MOT Date



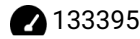
Last Service



Number of Owners



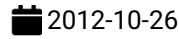
Last Service Mileage



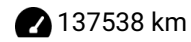
Number of Keys



First Registration Date



Odometer Reading



Country First Registered



Inspection Report Summary

Customer	BCA Online	Report Number	P20250916095601
Inspection Date / Place	2025-09-16 / Dello Bremen	Cosmetic Grade	4

Vehicle Summary

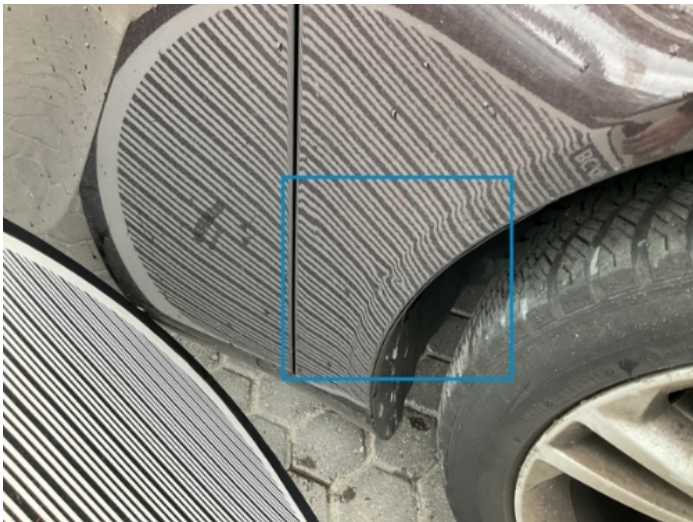
Vehicle Condition	Runner	VAT Type	Margin
Fuel Type	Petrol	Road Worthy	Yes
Colour	Brown	Engine Size (cc)	1998
Engine Size	2.0	No of Doors	5
Body Type	Stationwagon / Estate	Drive Train	Front
Seat Colour		No of Seats	5
Seat Covering Name	Schwarz	Seat Covering	Synthetic Leather
Charging Cables		NEDC CO2 Rating (q/km)	209
Gearbox Type	Automatic		

Vehicle History & Documents

Service Book Available	Present	Next Service Mileage	km
Previous Usage		Imported	No
Manufacturer Warrenty			







Equipment

Tow ball	USB Socket	Alloys wheels	Auxiliary Socket
Cruise control	Front parking sensors	Remote adjusting wing mirrors	Roof rails
Stability control	Electrically folding wing mirrors	Leather steering wheel	Rain sensitive windscreen wipers
Trip Computer	Airbag Status	Anti-lock braking	Bi Xenon Headlamps
Front fog lamps	Headlamp wash/wipe	Remote central locking	Satellite navigation
CD Player	Electric tailgate	Radio	Rear parking sensors

Equipment Details

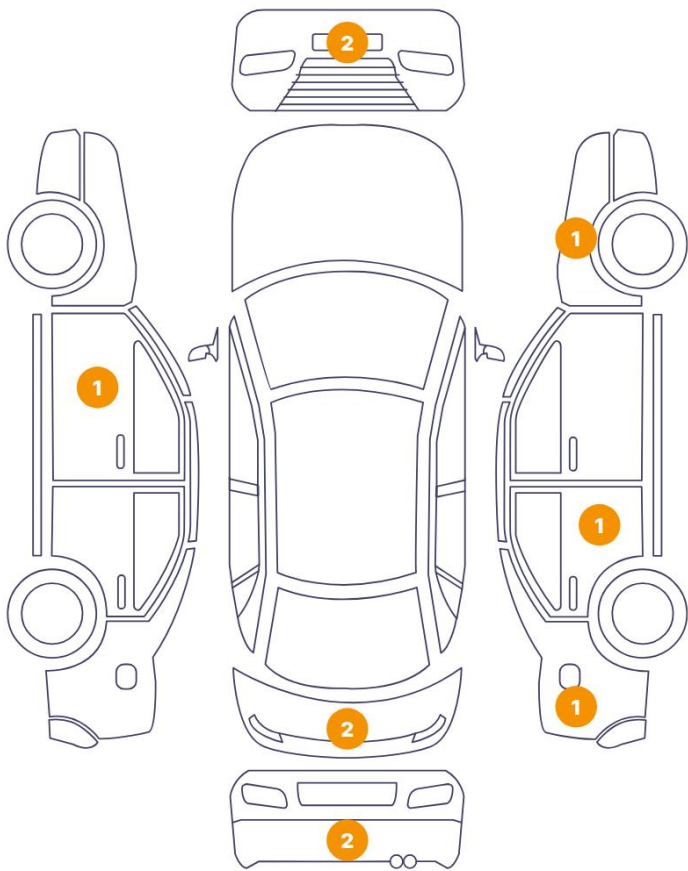
Tow Ball Type	Pivoted	Air Conditioning	Dual Zone Climate Control
Alloy Wheel Size	18	Seat Heating	Front

Wheels & Tyres

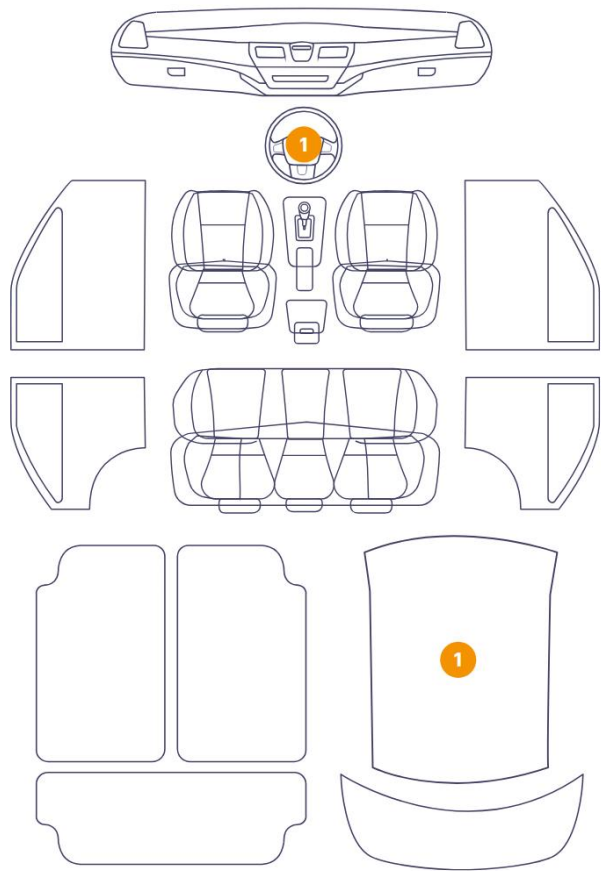
Left Rear Tyre Depth	6	Right Rear Tyre Depth	6
Right Front Tyre Depth	3	Left Front Tyre Depth	3

Cosmetic Damage

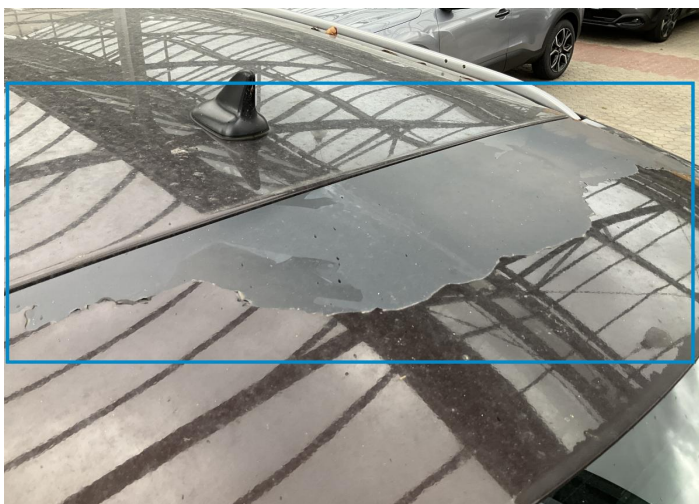
10 Schäden



2 Schäden



Component		Damage	Comments
1	Tailgate	Paint / Poor Previous Repair	
2	Bumper / Front	Bodywork / Dent / Dent	
3	Bumper / Front	Paint / Scratch / Scuff	
4	Door / Front Left	Bodywork / Dent / Dent	
5	Bumper / Back	Paint / Scratch / Scuff	
6	Tailgate	Paint / Scratch / Scuff	
7	Bumper / Back	Bodywork / Dent / Dent	
8	Fender / Front Right	Bodywork / Dent / Dent	
9	Fender / Back Right	Paint / Poor Previous Repair	
10	Door / Back Right	Paint / Poor Previous Repair	
11	Steering Wheel / Front	Interior / Worn - out	
12	Roof Upholstery	Interior / Worn - out	



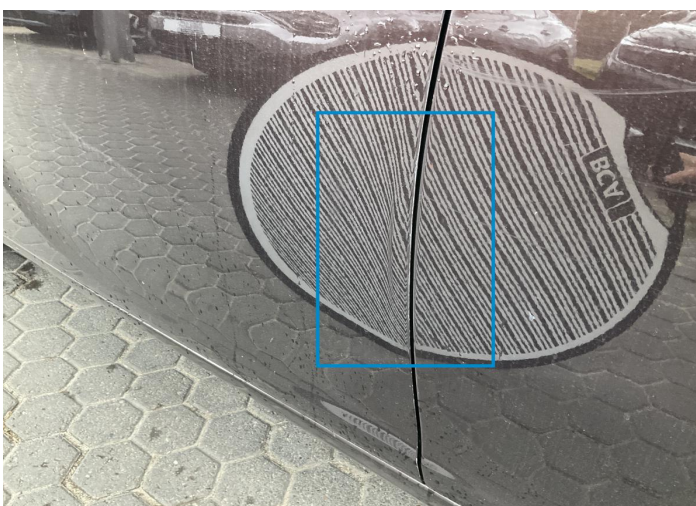
1. Tailgate
Paint / Poor Previous Repair -



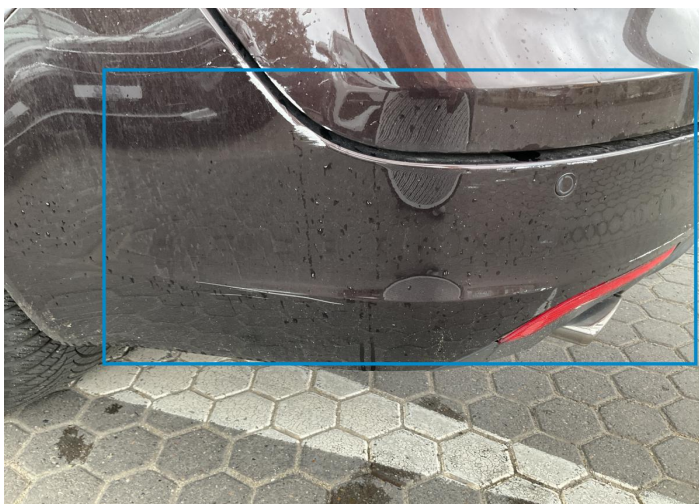
2. Bumper / Front
Bodywork / Dent / Dent -



3. Bumper / Front
Paint / Scratch / Scuff -



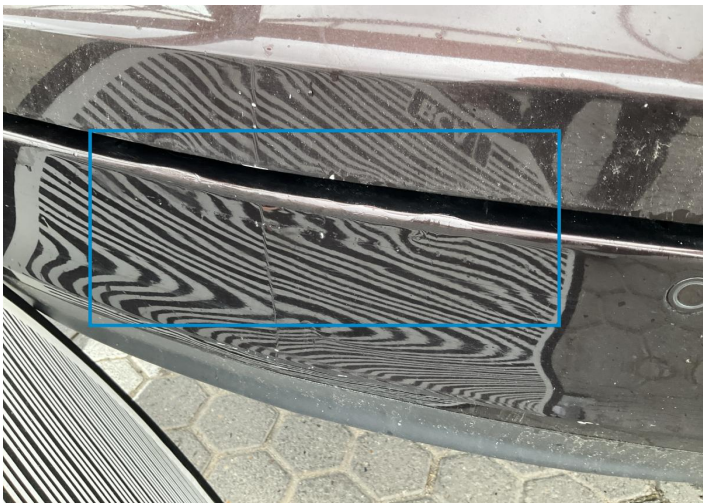
4. Door / Front Left
Bodywork / Dent / Dent -



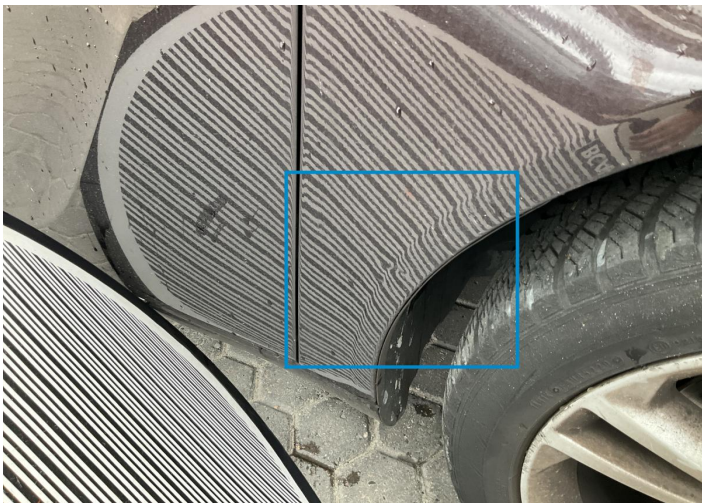
5. Bumper / Back
Paint / Scratch / Scuff -



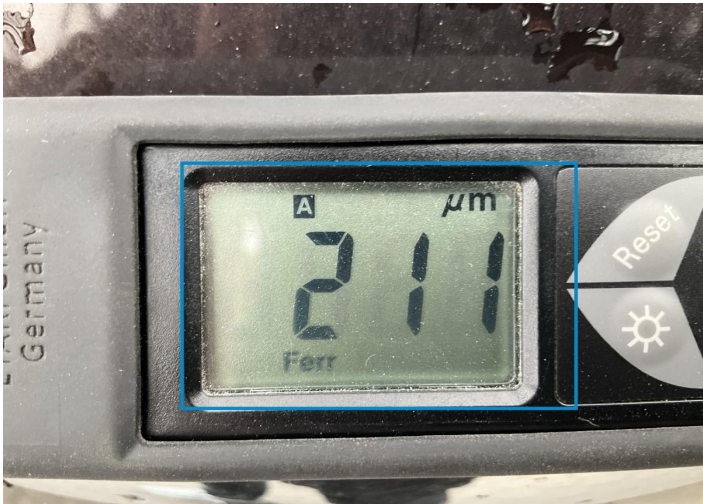
6. Tailgate
Paint / Scratch / Scuff -



7. Bumper / Back
Bodywork / Dent / Dent -



8. Fender / Front Right
Bodywork / Dent / Dent -



9. Fender / Back Right
Paint / Poor Previous Repair -



10. Door / Back Right
Paint / Poor Previous Repair -



11. Steering Wheel / Front
Interior / Worn - out -



12. Roof Upholstery
Interior / Worn - out -

Mechanical Condition

Equipments Test

Central Locking	✓	Electric Windows	✓
Navigation System	✓	Audio Equipment	✓
AC / Heating System	✓	Main & Spare Keys Functioning	!
Parking Sensors / Cameras Functioning	✓	Other Equipments	✓

Control Lights

ABS Warning Light	✓	ESP Fault/Traction Control Malfunction Light	✓
Airbag Warning Light	✓	Oil Pressure Warning Light	✓
Brake Warning Light	✓	Power Steering Warning Light	✓
Alternator / Battery	✓	No Dashboard Lights	✓
Display Defect	✓	Service Light	✓
Tire Pressure Monitoring System	✓		

Engine

Engine Status / EML	✓	Engine Leak Visible	✓
Engine Starts	✓		

Gearbox

Gear Box	✓
----------	---

Levels

Brakes Fluid	✓	Coolant Fluid	✓
--------------	---	---------------	---

Test Drive Inspection

Steering Wheel

Steering | Noise / Anomaly ✓

Engine

Engine Noise ✓ The Gears Scratch / Skip / Abnormal Operation ✓

Fume Quantity ✓ Power Loss ✓

Brake

Brake System Anomaly ✓

General

Test Driven Status NA

- ✓ No troubles detected, good condition or correct tests, according to vehicle age and mileage
- ! Damages or malfunction detected that requires repairs by the buyer
- NA Not applicable
- ☐ Not tested

Disclaimer

Please also note the "UserGuide condition report", which shows the scope of the vehicle description. [User Guide](#)