



# OPEL Insignia

## Insignia 2.0 CDTI ecoflex Business

VIN NO W0LGM6EMXB1053379  
Registration Number MXB1053379



MOT Date



Last Service



Number of Owners



Last Service Mileage



Number of Keys



First Registration Date



Odometer Reading



Country First Registered



### Inspection Report Summary

Customer	BCA Online	Report Number	P20251007125617
Inspection Date / Place	2025-10-07 / SULOJA Mönchengladbach	Cosmetic Grade	5

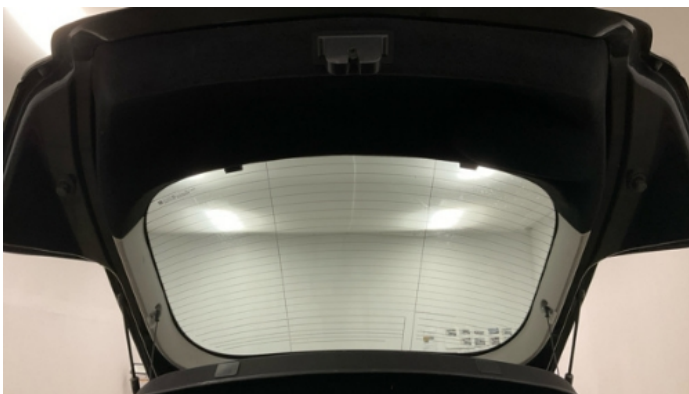
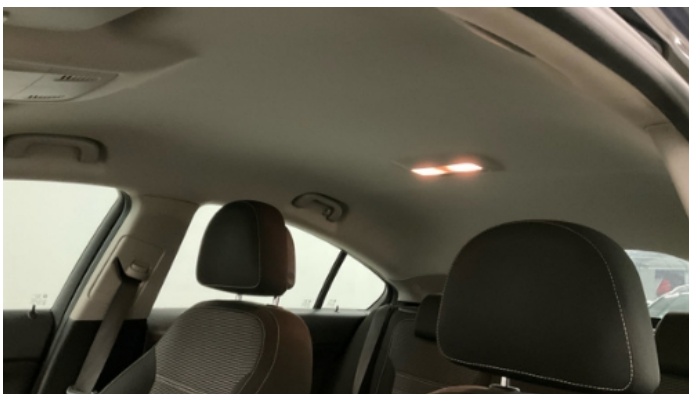
### Vehicle Summary

Vehicle Condition	Runner	VAT Type	Margin
Fuel Type	Diesel	Road Worthy	Yes
Colour	Black	Engine Size (cc)	1956
Engine Size	2.0	No of Doors	5
Body Type	Sedan	Drive Train	Front
Seat Colour		No of Seats	5
Seat Covering Name		Seat Covering	Cloth
Charging Cables		NEDC CO2 Rating (q/km)	129
Gearbox Type	Manual		

### Vehicle History & Documents

Service Book Available	Missing	Next Service Mileage	km
Previous Usage		Imported	No
Manufacturer Warrenty			







Equipment

Airbag Status	Anti-lock braking	Bluetooth telephone interface	Diesel particulate filter
Front parking sensors	Remote central locking	Stability control	Central locking
Leather steering wheel	Rain sensitive windscreen wipers	Alloys wheels	Auxiliary Socket
Cruise control	Front fog lamps	Remote adjusting wing mirrors	Satellite navigation
CD Player	Electrically folding wing mirrors	Radio	Rear parking sensors

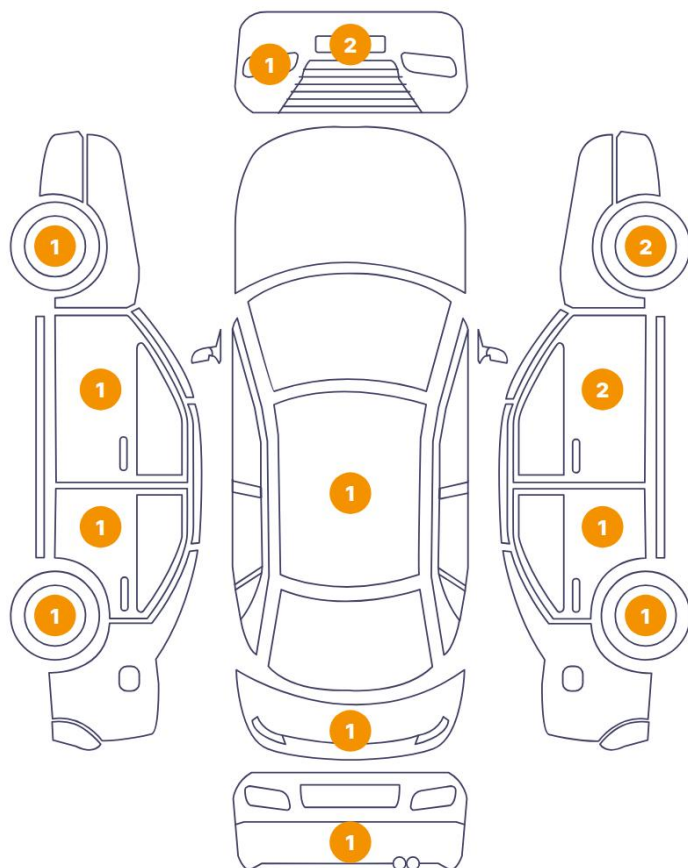
Equipment Details

Air Conditioning	Yes	Alloy Wheel Size	18
------------------	-----	------------------	----

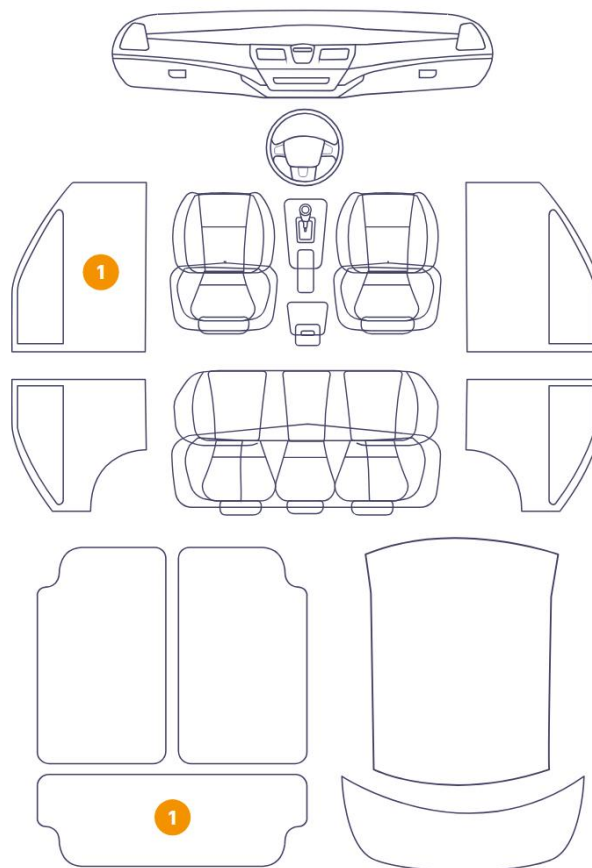
Wheels & Tyres

Left Front Tyre Depth	6	Left Rear Tyre Depth	5
Right Front Tyre Depth	6	Right Rear Tyre Depth	5

## 16 Schäden



## 2 Schäden

6/12 - Report Number P20251007125617

13	Rim / Back Right	Out of Bodywork / Scratch
14	Rim / Back Left	Out of Bodywork / Scratch
15	Tire / Front Right	Bodywork / Breakage / Hole
16	Door / Front Right	Bodywork / Dent / Dent
17	Rim / Front Left	Out of Bodywork / Scratch
18	Roof	Bodywork / Dent / Dent



1. Door / Back Right  
Paint / Scratch / Scuff -



2. Bumper / Back  
Paint / Scratch / Scuff -



3. Door / Front Right  
Paint / Scratch / Scuff -



4. Door / Back Left  
Paint / Scratch / Scuff -



5. Door / Front Left  
Paint / Scratch / Scuff -



6. Tailgate  
Paint / Scratch / Scuff -



7. Luggage Space Cover / Back Interior / Dirty -



8. Rim / Front Right Out of Bodywork / Scratch -



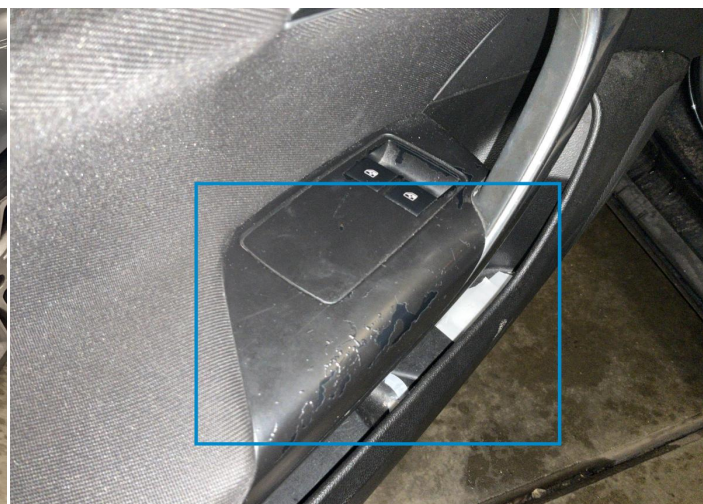
9. Corner Bumper / Front Right Bodywork / Breakage / Hole -



10. Front Light / Front Left -



11. Corner Bumper / Front Left Paint / Scratch / Scuff -



12. Panel Filling / Front Left Interior / Scratched -



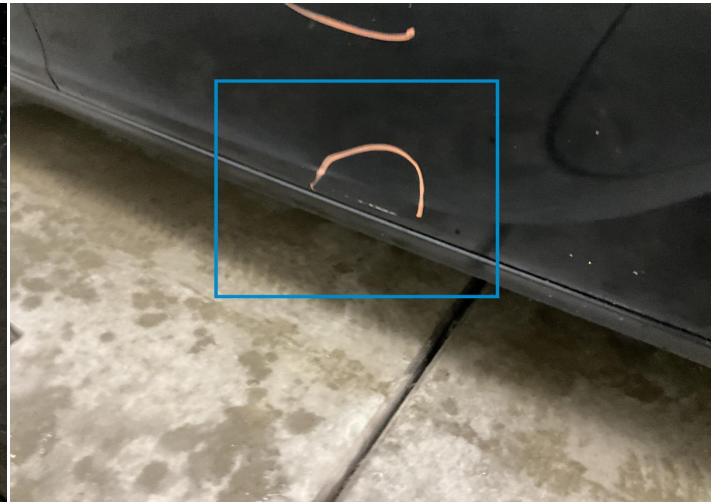
13. Rim / Back Right  
Out of Bodywork / Scratch -



14. Rim / Back Left  
Out of Bodywork / Scratch -



15. Tire / Front Right  
Bodywork / Breakage / Hole -



16. Door / Front Right  
Bodywork / Dent / Dent -



17. Rim / Front Left  
Out of Bodywork / Scratch -



18. Roof  
Bodywork / Dent / Dent -

## Mechanical Condition

### Equipments Test

Central Locking	✓	Electric Windows	✓
Navigation System	✓	Audio Equipment	✓
Main & Spare Keys Functioning	✓	Parking Sensors / Cameras Functioning	✓
Other Equipments	✓		

### Control Lights

ABS Warning Light	✓	ESP Fault/Traction Control Malfunction Light	✓
Diesel Particulate Filter Light	✓	Airbag Warning Light	✓
Oil Pressure Warning Light	✓	Brake Warning Light	✓
Power Steering Warning Light	✓	Alternator / Battery	✓
No Dashboard Lights	✓	Display Defect	✓
Service Light	✓		

### Engine

Engine Status / EML	!	Engine Leak Visible	✓
Engine Starts	✓		

### Gearbox

Gear Box	✓
----------	---

### Levels

Brakes Fluid	✓	Coolant Fluid	✓
--------------	---	---------------	---

Test Drive Inspection

Steering Wheel			
Steering   Noise / Anomaly		✓	
Engine			
Engine Noise	✓	The Gears Scratch / Skip / Abnormal Operation	✓
Fume Quantity	✓	Power Loss	✓
Brake			
Brake System Anomaly		✓	
Clutch			
Clutch Functioning		✓	
General			
Test Driven Status		Not Performed	
✓ <i>No troubles detected, good condition or correct tests, according to vehicle age and mileage</i>			
! <i>Damages or malfunction detected that requires repairs by the buyer</i>			
NA <i>Not applicable</i>			
= <i>Not tested</i>			

Disclaimer

Please also note the "UserGuide condition report", which shows the scope of the vehicle description. [User Guide](#)