



OPEL Astra


Astra 1.6 D (CDTI) Automatik Sports Tourer

VIN NO W0LBE8EG6G8059529

Registration Number G6G8059529



MOT Date

 2027-04-01

Last Service



Number of Owners

 2


Last Service Mileage



Number of Keys

 2

First Registration Date

 2016-04-08

Odometer Reading

 154779 km

Country First Registered



Inspection Report Summary

| | | | |
|-------------------------|-------------------------|----------------|-----------------|
| Customer | BCA Online | Report Number | P20250917133826 |
| Inspection Date / Place | 2025-09-17 / BCA Berlin | Cosmetic Grade | 4 |

Vehicle Summary

| | | | |
|-------------------|-----------------------|------------------------|-----------|
| Vehicle Condition | Runner | VAT Type | Margin |
| Fuel Type | Diesel | Gearbox Type | Automatic |
| Colour | Black | Engine Size (cc) | 1598 |
| Engine Size | 1.6 | No of Doors | 5 |
| Body Type | Stationwagon / Estate | Drive Train | Front |
| Seat Colour | | No of Seats | 5 |
| Charging Cables | | NEDC CO2 Rating (q/km) | 119 |

Vehicle History & Documents

| | | | |
|------------------------|---|----------------------|----|
| Service Book Available | - | Next Service Mileage | km |
| Previous Usage | | Imported | No |
| Manufacturer Warrenty | | | |







Equipment

| | | | |
|-------------------------|-------------------------------|----------------------------------|------------------------|
| Tinted Glass | Traffic sign recognition | USB Socket | Alloys wheels |
| Auxiliary Socket | Cruise control | Front parking sensors | Parking Assistance |
| Remote central locking | Roof rails | Stability control | Emergency brake assist |
| Leather steering wheel | Rear parking sensors | Tow ball | Trip Computer |
| Airbag Status | Anti-lock braking | Bluetooth telephone interface | Front fog lamps |
| Heated wing mirrors | Remote adjusting wing mirrors | Reversing Camera | Satellite navigation |
| Distance warning system | Lane assist | Rain sensitive windscreen wipers | |

Equipment Details

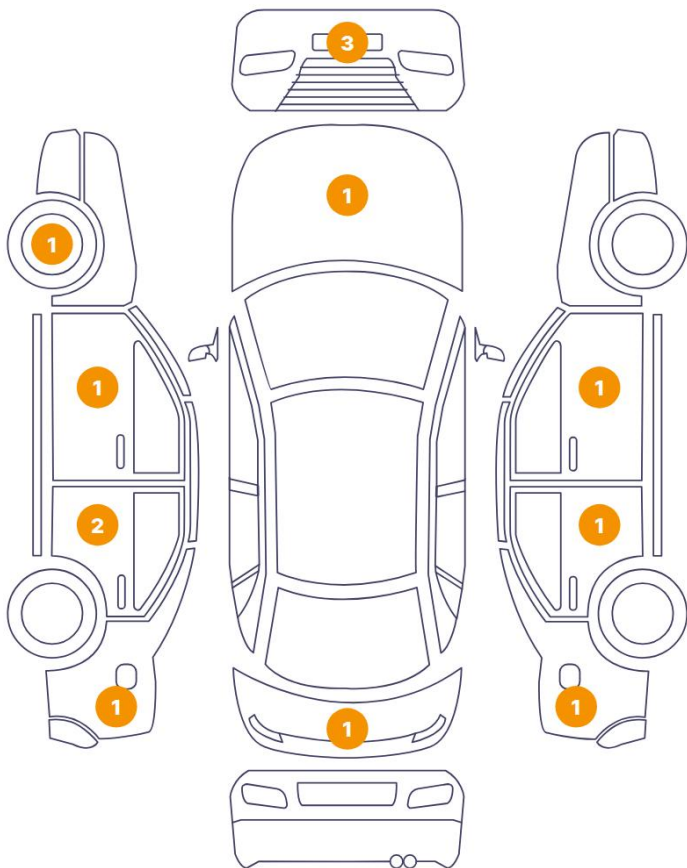
| | | | |
|------------------|------------|------------------|---------------------------|
| Tow Ball Type | Detachable | Air Conditioning | Dual Zone Climate Control |
| Alloy Wheel Name | KBA | Alloy Wheel Size | 18 |
| Seat Heating | Front | | |

Wheels & Tyres

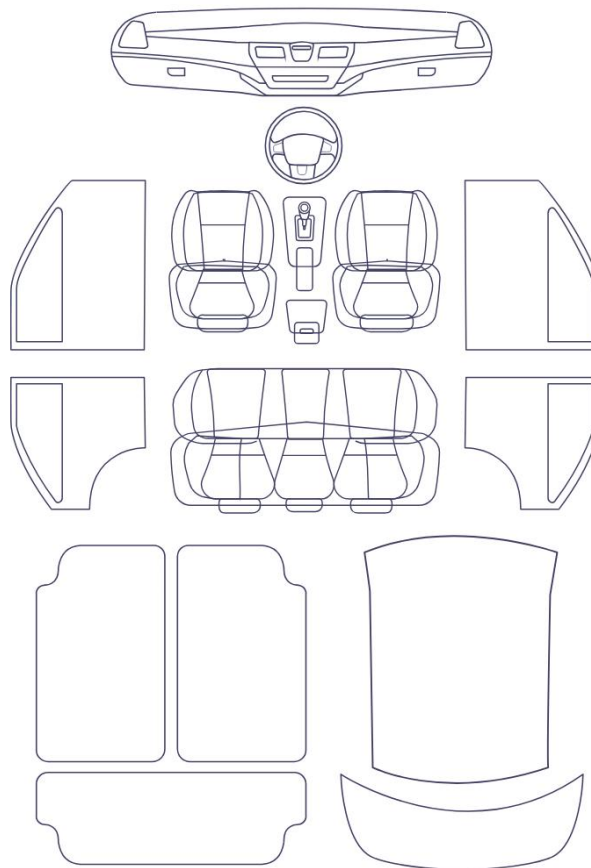
| | | | |
|------------------------|---|-----------------------|---|
| Right Front Tyre Depth | 6 | Left Front Tyre Depth | 6 |
| Right Rear Tyre Depth | 6 | Left Rear Tyre Depth | 6 |

Cosmetic Damage

13 Schäden



0 Schäden



| Component | | Damage | Comments |
|-----------|----------------------------|---------------------------|----------|
| 1 | Door / Front Left | Paint / Scratch / Scuff | |
| 2 | Door / Back Left | Paint / Scratch / Line | |
| 3 | Door Handle / Back Left | Paint / Scratch / Line | |
| 4 | Side Panel / Back Left | Paint / Scratch / Scuff | |
| 5 | Tailgate | Paint / Scratch / Scuff | |
| 6 | Side Panel / Back Right | Paint / Scratch / Scuff | |
| 7 | Door / Back Right | Paint / Scratch / Scuff | |
| 8 | Mirror Shell / Front Right | Paint / Scratch / Scuff | |
| 9 | Bumper / Front | Paint / Scratch / Scuff | |
| 10 | Bumper / Front | Paint / Chipping | |
| 11 | Bumper / Front | Paint / Scratch / Scuff | |
| 12 | Rim / Front Left | Out of Bodywork / Scratch | |

13 Hood

Paint / Scratch / Scuff



1. Door / Front Left
Paint / Scratch / Scuff -



2. Door / Back Left
Paint / Scratch / Line -



3. Door Handle / Back Left
Paint / Scratch / Line -



4. Side Panel / Back Left
Paint / Scratch / Scuff -



5. Tailgate
Paint / Scratch / Scuff -



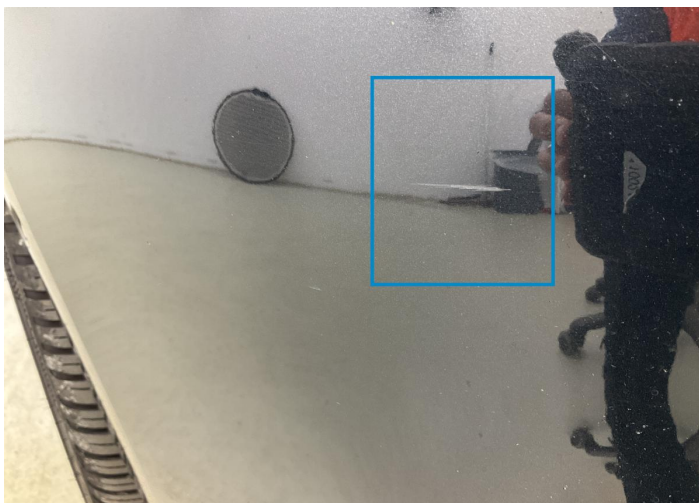
6. Side Panel / Back Right
Paint / Scratch / Scuff -



7. Door / Back Right
Paint / Scratch / Scuff -



8. Mirror Shell / Front Right
Paint / Scratch / Scuff -



9. Bumper / Front
Paint / Scratch / Scuff -



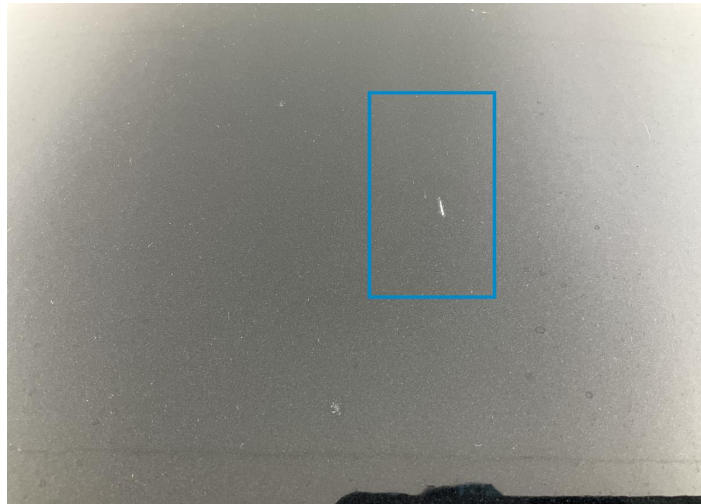
10. Bumper / Front
Paint / Chipping -



11. Bumper / Front
Paint / Scratch / Scuff -



12. Rim / Front Left
Out of Bodywork / Scratch -



13. Hood
Paint / Scratch / Scuff -

Mechanical Condition

Control Lights

| | | | |
|--|---|---------------------------------|---|
| Display Defect | ✓ | ABS Warning Light | ✓ |
| ESP Fault/Traction Control Malfunction Light | ✓ | Airbag Warning Light | ✓ |
| Oil Pressure Warning Light | ✓ | Brake Warning Light | ✓ |
| Power Steering Warning Light | ✓ | Alternator / Battery | ✓ |
| No Dashboard Lights | ✓ | Tire Pressure Monitoring System | ✓ |

Equipments Test

| | | | |
|-------------------------------|---|---------------------------------------|---|
| Main & Spare Keys Functioning | ✓ | Electric Windows | ✓ |
| Navigation System | ✓ | Parking Sensors / Cameras Functioning | ✓ |
| AC / Heating System | ✓ | | |

Engine

| | | | |
|---------------------|---|---------------------|---|
| Engine Status / EML | ! | Engine Leak Visible | ✓ |
| Engine Starts | ✓ | | |

Gearbox

| | |
|----------|---|
| Gear Box | ✓ |
|----------|---|

Levels

| | | | |
|--------------|---|---------------|---|
| Brakes Fluid | ✓ | Coolant Fluid | ✓ |
|--------------|---|---------------|---|

Test Drive Inspection

| Steering Wheel | | | |
|---|---|---|---|
| Steering Noise / Anomaly | | ✔ | |
| Engine | | | |
| Engine Noise | ✔ | The Gears Scratch / Skip / Abnormal Operation | ✔ |
| Fume Quantity | ✔ | Power Loss | ✔ |
| Clutch | | | |
| Clutch Functioning | | ✔ | |
| Brake | | | |
| Brake System Anomaly | | ✔ | |
| General | | | |
| Test Driven Status | | ✔ | |
| ✔ No troubles detected, good condition or correct tests, according to vehicle age and mileage | | | |
| ! Damages or malfunction detected that requires repairs by the buyer | | | |
| NA Not applicable | | | |
| = Not tested | | | |

Disclaimer

Please also note the "UserGuide condition report", which shows the scope of the vehicle description.

[User Guide](#)