



OPEL CORSA

Corsa 1.3 CDTI Cosmo

VIN NO W0L0XCF0844264220
Registration Number 9841WB62



MOT Date	Number of Owners	Number of Keys	Odometer Reading
-	-	1	105703 km
Last Service	Last Service Mileage	First Registration Date	Country First Registered
-	-	2004-08-10	-

Inspection Report Summary

Customer	BCA Auto Encheres	Report Number	P20251003075113
Inspection Date / Place	2025-10-03 / BCA BOUCHAIN	Cosmetic Grade	3

Vehicle Summary

Vehicle Condition	Non-Runner	VAT Type	Exempt Rate
Fuel Type	Diesel	Gearbox Type	Manual
Colour	Blue	Engine Size (cc)	1248
Engine Size	1.2	No of Doors	3
Body Type	Hatchback	Drive Train	Front
Seat Colour		No of Seats	5
Charging Cables		NEDC CO2 Rating (q/km)	127

Vehicle History & Documents

Service Book Available	Missing	Next Service Mileage	km
Previous Usage	Normal Use	Imported	No
Manufacturer Warranty			





Equipment

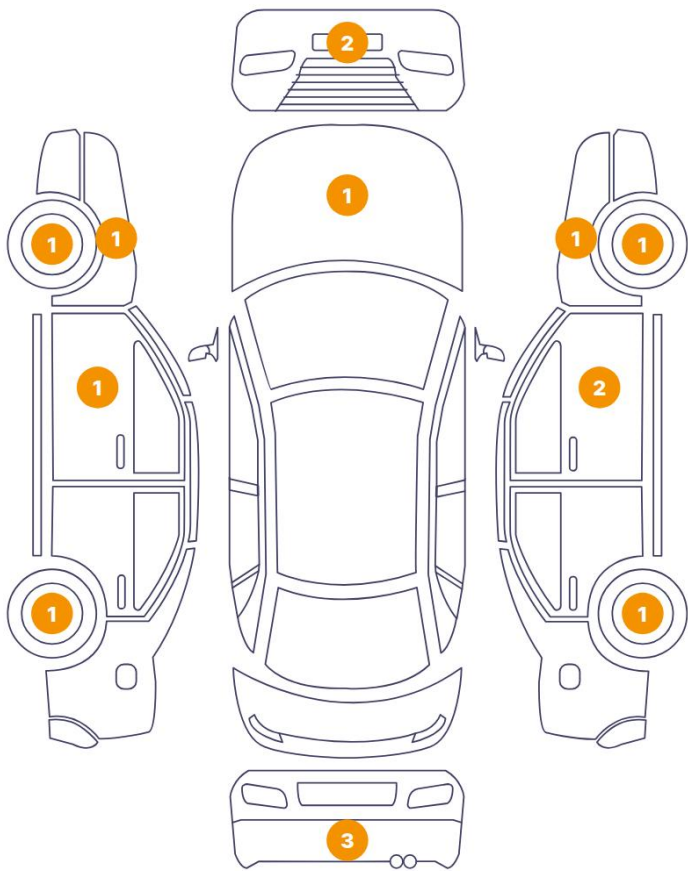
Radio	Power assisted steering	Alloys wheels
-------	-------------------------	---------------

Equipment Details

Seat Heating	No	Air Conditioning	Yes
Sunroof Type	Tilt/Slide Steel		

Cosmetic Damage

15 Dommages

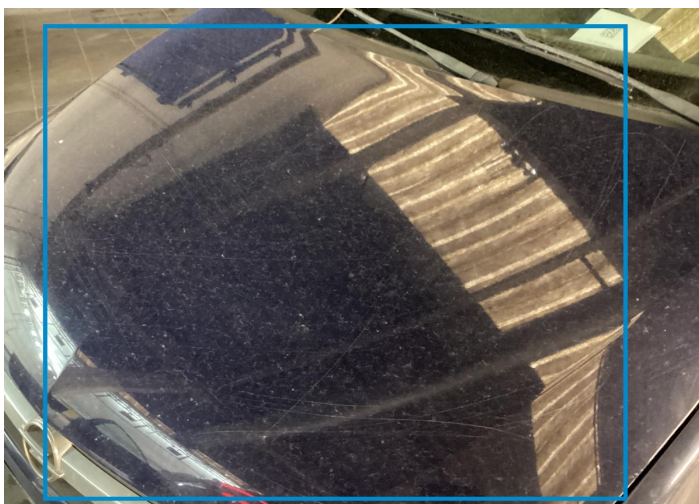


0 Dommages



Component		Damage	Comments
1	Hood	Paint / Scratch / Line	
2	Fender / Front Left	Paint / Scratch / Line	
3	Rim / Front Left	Out of Bodywork / Scratch	
4	Door / Front Left	Paint / Scratch / Line	
5	Rim / Back Left	Out of Bodywork / Scratch	
6	Corner Bumper / Back Left	Paint / Scratch / Line	
7	Bumper / Back	Bodywork / Dent / Deformation	
8	Corner Bumper / Back Right	Paint / Scratch / Line	
9	Rim / Back Right	Out of Bodywork / Scratch	
10	Door / Front Right	Paint / Scratch / Line	
11	Mirror / Front Right	Paint / Scratch / Line	
12	Wing Expander / Front Right	Missing Part	

13	Rim / Front Right	Out of Bodywork / Scratch
14	Corner Bumper / Front Right	Paint / Scratch / Line
15	Corner Bumper / Front Left	Paint / Scratch / Line



1. Hood
Paint / Scratch / Line -



2. Fender / Front Left
Paint / Scratch / Line -



3. Rim / Front Left
Out of Bodywork / Scratch -



4. Door / Front Left
Paint / Scratch / Line -



5. Rim / Back Left
Out of Bodywork / Scratch -



6. Corner Bumper / Back Left
Paint / Scratch / Line -



7. Bumper / Back
Bodywork / Dent / Deformation -



8. Corner Bumper / Back Right
Paint / Scratch / Line -



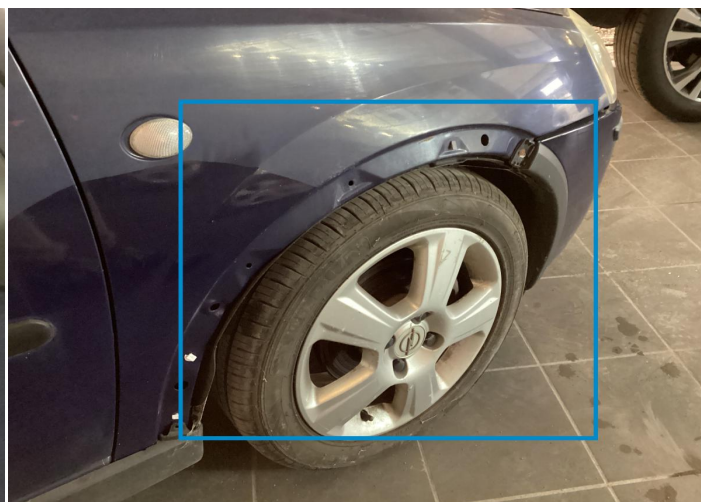
9. Rim / Back Right
Out of Bodywork / Scratch -



10. Door / Front Right
Paint / Scratch / Line -



11. Mirror / Front Right
Paint / Scratch / Line -



12. Wing Expander / Front Right
Missing Part -



13. Rim / Front Right
Out of Bodywork / Scratch -



14. Corner Bumper / Front Right
Paint / Scratch / Line -



15. Corner Bumper / Front Left
Paint / Scratch / Line -

Mechanical Condition

Tyres

Presence Anti-Theft Lock Nut 

 *No troubles detected, good condition or correct tests, according to vehicle age and mileage*

 *Damages or malfunction detected that requires repairs by the buyer*

 *Not applicable*

 *Not tested*

Disclaimer Section

The test drive is done on a flat surface and lasts about 2 minutes. The driven distance is a minimum of 300 meters, including a u-turn, an acceleration and a braking phase. The highest speed achieved during this test is 50km/h. The mechanical check is a visual and dynamic diagnosis without any disassembly. We cannot guarantee any mechanical wear part.