



OPEL Corsa

Corsa 1.3 CDTI DPF ecoFLEX Start-Stop

VIN NO W0L0SDL68D4039889
Registration Number 68D4039889



MOT Date	Number of Owners	Number of Keys	Odometer Reading
-	2	2	188409 km
Last Service	Last Service Mileage	First Registration Date	Country First Registered
2024-11-22	183060	2012-11-14	-

Inspection Report Summary

Customer	BCA Online	Report Number	P20250919105938
Inspection Date / Place	2025-09-19 / ARS Altmann AG Riedstadt	Cosmetic Grade	4

Vehicle Summary

Vehicle Condition	Runner	VAT Type	Margin
Fuel Type	Diesel	Road Worthy	Yes
Colour	Silver	Engine Size (cc)	1248
Engine Size	1.2	No of Doors	5
Body Type	Sedan	Drive Train	Front
Seat Colour		No of Seats	5
Seat Covering Name	Schwarz	Seat Covering	Cloth/Synthetic Leather
Charging Cables		NEDC CO2 Rating (q/km)	95
Gearbox Type	Manual		

Vehicle History & Documents

Service Book Available	Full Service History	Next Service Mileage	km
Previous Usage		Imported	No
Manufacturer Warrenty			







Equipment

Trip Computer	Alloys wheels	Auxiliary Socket	Diesel particulate filter
Remote adjusting wing mirrors	Stability control	Central locking	Radio
Airbag Status	Anti-lock braking	Cruise control	Front fog lamps
Remote central locking	CD Player	Leather steering wheel	

Equipment Details

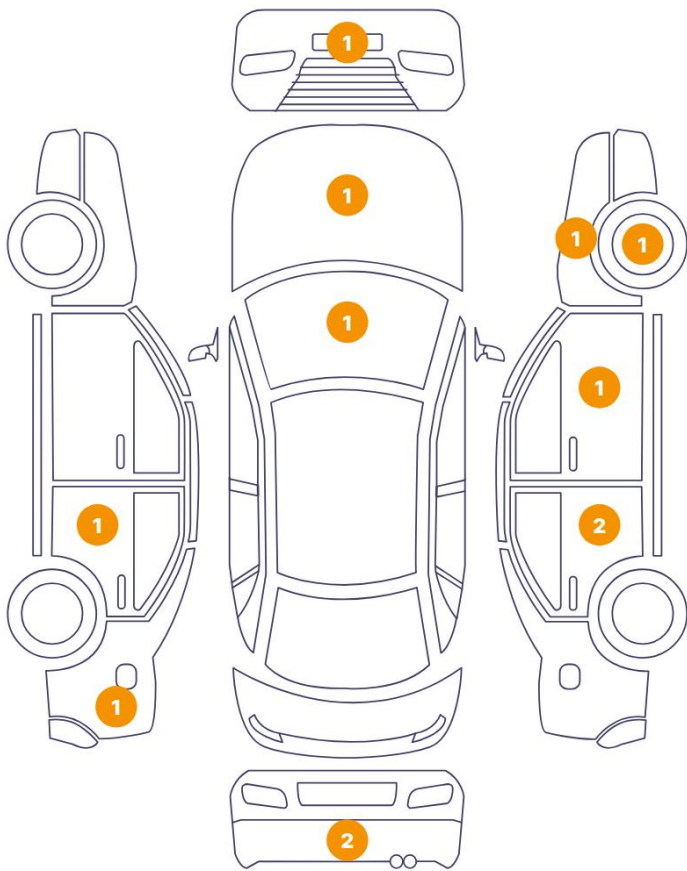
Air Conditioning	Yes	Alloy Wheel Size	15
------------------	-----	------------------	----

Wheels & Tyres

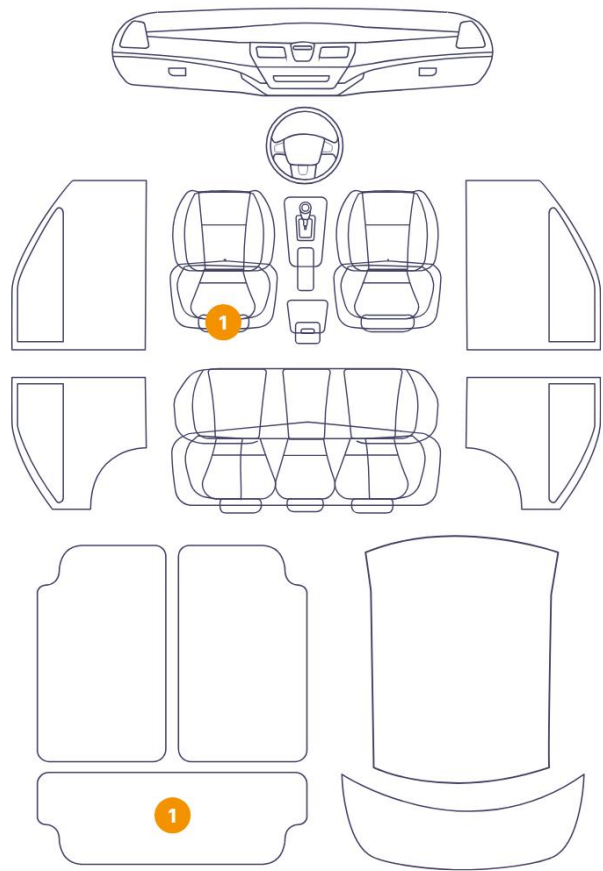
Right Front Tyre Depth	8	Left Front Tyre Depth	8
Right Rear Tyre Depth	8	Left Rear Tyre Depth	8

Cosmetic Damage

12 Schäden



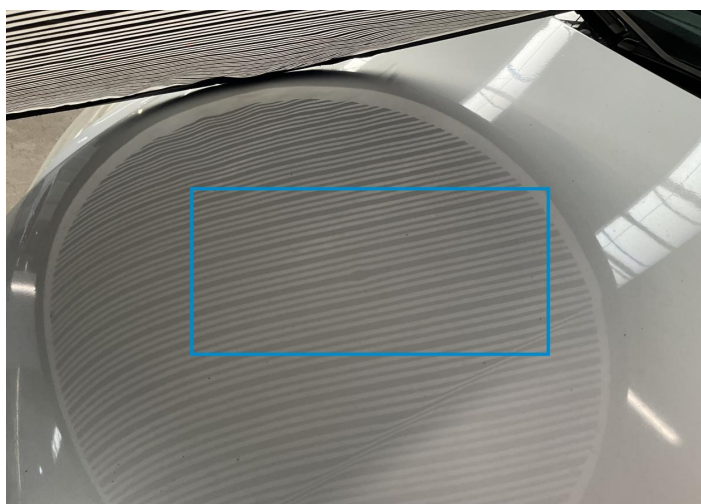
2 Schäden



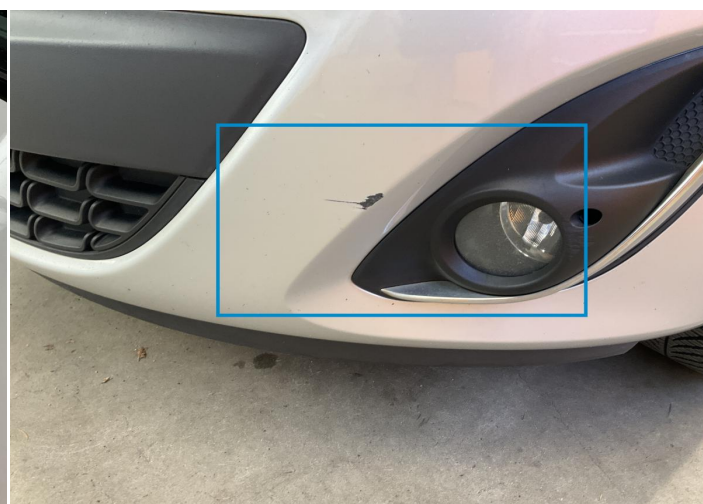
Component		Damage	Comments
1	Hood	Bodywork / Dent / Dent	
2	Bumper / Front	Paint / Scratch / Scuff	
3	Seat / Front Left	Interior / Ripped	
4	Door / Back Left	Paint / Scratch / Scuff	
5	Side Panel / Back Left	Paint / Scratch / Scuff	
6	Bumper / Back	Paint / Scratch / Scuff	
7	Bumper / Back	Paint / Scratch / Scuff	
8	Luggage Space Cover / Back	Interior / Missing	
9	Door / Back Right	Paint / Scratch / Scuff	
10	Pillar / Back Right	Paint / Scratch / Scuff	
11	Door / Front Right	Bodywork / Dent / Deformation	
12	Fender / Front Right	Bodywork / Dent / Deformation	

13	Rim / Front Right	Out of Bodywork / Scratch
----	-------------------	---------------------------

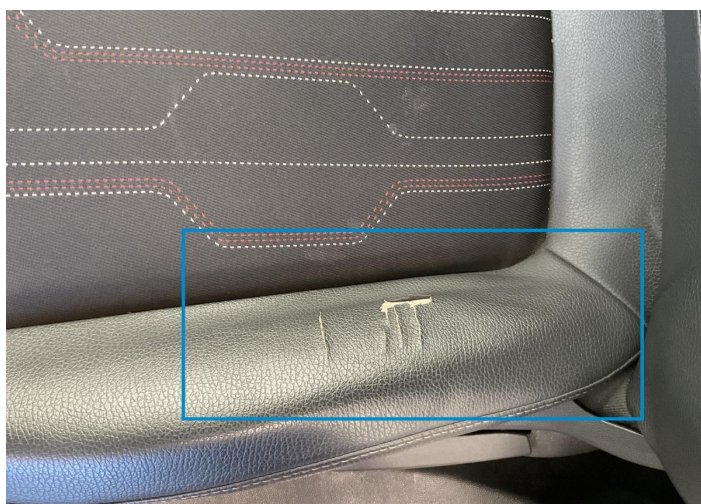
14	Windshield / Front	Glass Break / Impact
----	--------------------	----------------------



1. Hood
Bodywork / Dent / Dent -



2. Bumper / Front
Paint / Scratch / Scuff -



3. Seat / Front Left
Interior / Ripped -



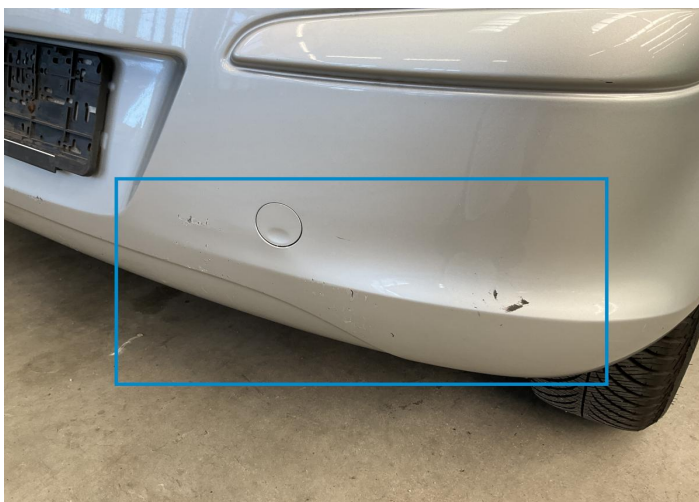
4. Door / Back Left
Paint / Scratch / Scuff -



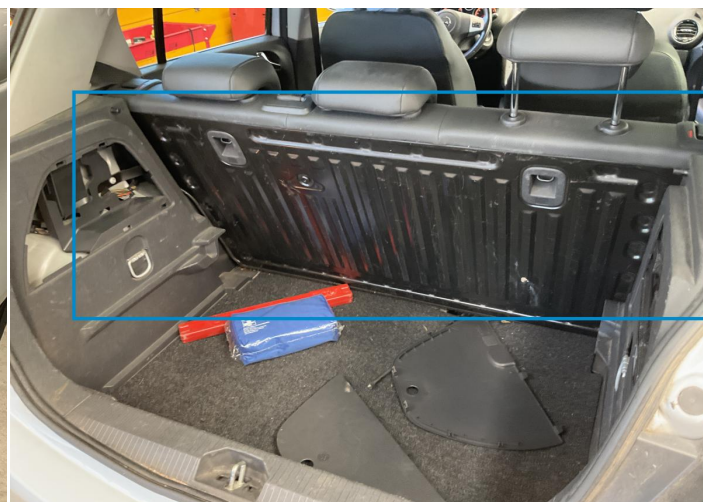
5. Side Panel / Back Left
Paint / Scratch / Scuff -



6. Bumper / Back
Paint / Scratch / Scuff -



7. Bumper / Back
Paint / Scratch / Scuff -



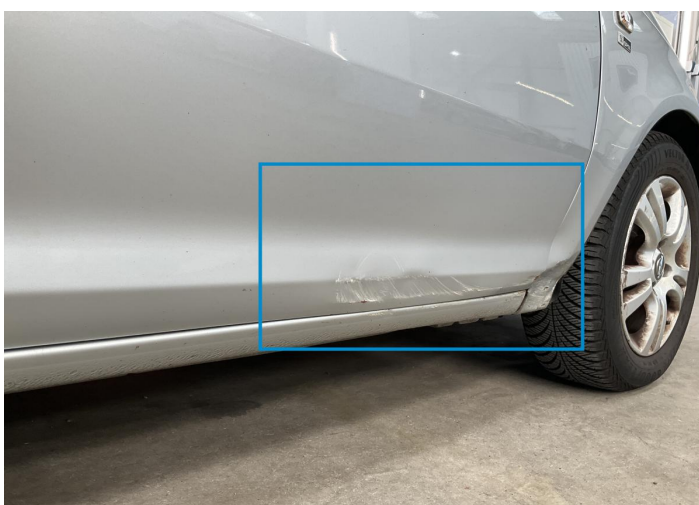
8. Luggage Space Cover / Back
Interior / Missing -



9. Door / Back Right
Paint / Scratch / Scuff -



10. Pillar / Back Right
Paint / Scratch / Scuff -



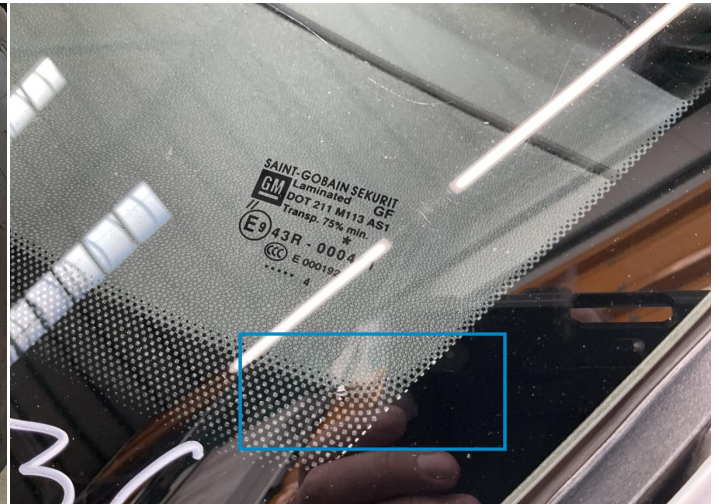
11. Door / Front Right
Bodywork / Dent / Deformation -



12. Fender / Front Right
Bodywork / Dent / Deformation -



13. Rim / Front Right
Out of Bodywork / Scratch -



14. Windshield / Front
Glass Break / Impact -

Mechanical Condition

Control Lights

Display Defect	✓	Service Light	✓
ABS Warning Light	✓	ESP Fault/Traction Control Malfunction Light	✓
Diesel Particulate Filter Light	✓	Airbag Warning Light	✓
Oil Pressure Warning Light	✓	Brake Warning Light	✓
Power Steering Warning Light	✓	Alternator / Battery	✓
No Dashboard Lights	✓		

Equipments Test

Central Locking	✓	Main & Spare Keys Functioning	✓
Electric Windows	✓	Audio Equipment	✓
AC / Heating System	✓		

Engine

Engine Status / EML	✓	Engine Leak Visible	✓
Engine Starts	✓		

Gearbox

Gear Box	✓
----------	---

Levels

Brakes Fluid	✓	Coolant Fluid	✓
--------------	---	---------------	---

Test Drive Inspection

Steering Wheel			
Steering Noise / Anomaly		✔	
Engine			
Engine Noise	✔	The Gears Scratch / Skip / Abnormal Operation	✔
Fume Quantity	✔	Power Loss	✔
Clutch			
Clutch Functioning		✔	
Brake			
Brake System Anomaly		✔	
General			
Test Driven Status		✔	
✔ No troubles detected, good condition or correct tests, according to vehicle age and mileage			
! Damages or malfunction detected that requires repairs by the buyer			
NA Not applicable			
= Not tested			

Disclaimer

Please also note the "UserGuide condition report", which shows the scope of the vehicle description.

[User Guide](#)