



## OPEL Corsa Corsa 1.4 16V

VIN NO W0L0SDL68B4006708

Registration Number 68B4006708



MOT Date

2025-09-01

Last Service

2023-09-14

Number of Owners

2

Last Service Mileage

114279

Number of Keys

1

First Registration Date

2010-09-30

Odometer Reading

127727 km

Country First Registered

Germany

### Inspection Report Summary

Customer	BCA Online	Report Number	P20250905085411
Inspection Date / Place	2025-09-05 / BCA Oberndorf	Cosmetic Grade	4

### Vehicle Summary

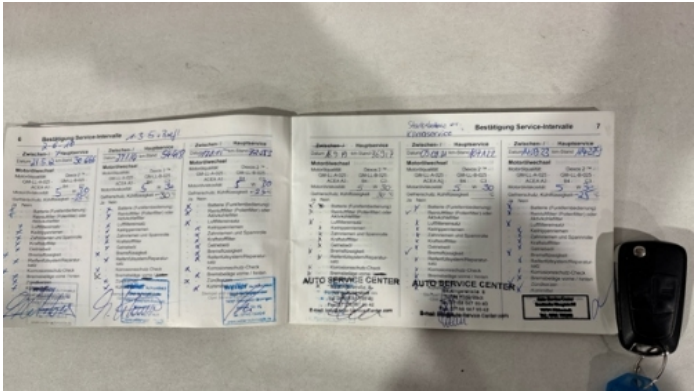
Vehicle Condition	Runner	VAT Type	Margin
Fuel Type	Petrol	Road Worthy	Yes
Colour	Blue	Engine Size (cc)	1398
Engine Size	1.4	No of Doors	5
Body Type	Sedan	Drive Train	Front
Seat Colour		No of Seats	5
Seat Covering Name	Schwarz/muster	Seat Covering	Cloth
Charging Cables		NEDC CO2 Rating (q/km)	129
Gearbox Type	Manual		

### Vehicle History & Documents

Service Book Available	Present	Next Service Mileage	km
Previous Usage		Imported	No
Manufacturer Warrenty			







Equipment

Tinted Glass	Anti-lock braking	Remote adjusting wing mirrors	Split folding rear seats
CD Player	Leather steering wheel	Rear parking sensors	Airbag Status
Cruise control	Remote central locking	Stability control	Central locking
Radio			

Equipment Details

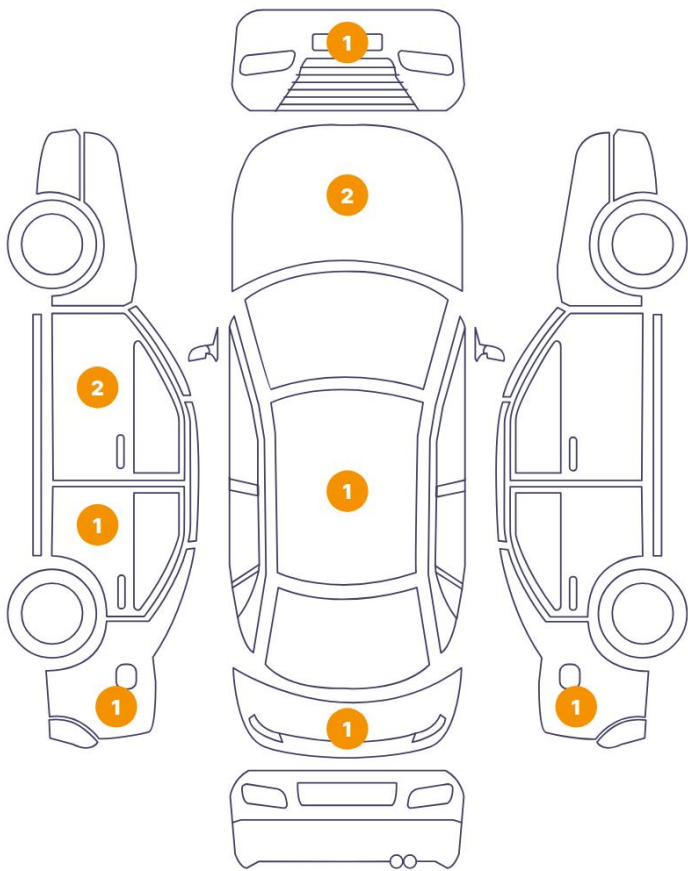
Air Conditioning	Yes	Seat Heating	Front
------------------	-----	--------------	-------

Wheels & Tyres

Right Front Tyre Depth	5	Left Front Tyre Depth	5
Right Rear Tyre Depth	5	Left Rear Tyre Depth	5

Cosmetic Damage

10 Schäden

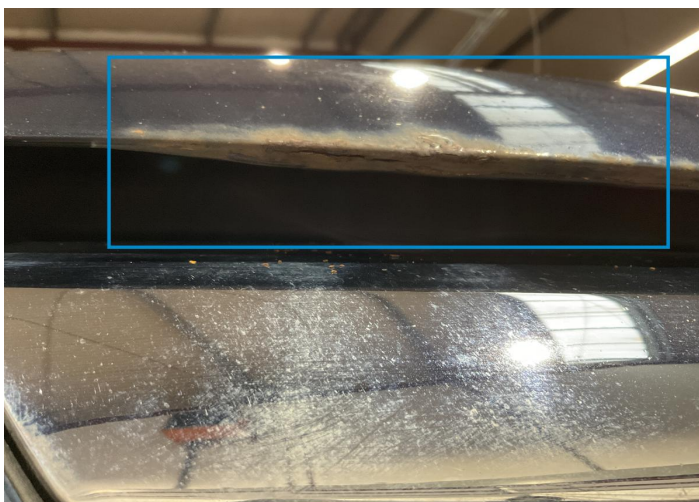


0 Schäden



Component		Damage	Comments
1	Hood	Paint / Corrosion	
2	Bumper / Front	Paint / Scratch / Scuff	
3	Hood	Paint / Scratch / Scuff	
4	Door / Front Left	Bodywork / Dent / Dent	
5	Door / Front Left	Paint / Scratch / Scuff	
6	Roof	Paint / Scratch / Scuff	
7	Door / Back Left	Bodywork / Dent / Dent	
8	Fender / Back Left	Paint / Scratch / Scuff	
9	Tailgate	Paint / Scratch / Scuff	
10	Door Edge / Back Right	Paint / Scratch / Scuff	





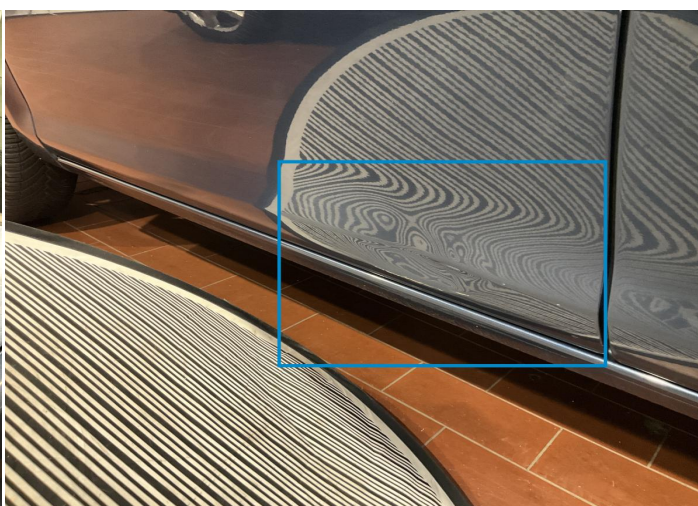
1. Hood  
Paint / Corrosion -



2. Bumper / Front  
Paint / Scratch / Scuff -



3. Hood  
Paint / Scratch / Scuff -



4. Door / Front Left  
Bodywork / Dent / Dent -



5. Door / Front Left  
Paint / Scratch / Scuff -



6. Roof  
Paint / Scratch / Scuff -





7. Door / Back Left  
Bodywork / Dent / Dent -



8. Fender / Back Left  
Paint / Scratch / Scuff -



9. Tailgate  
Paint / Scratch / Scuff -



10. Door Edge / Back Right  
Paint / Scratch / Scuff -

## Mechanical Condition

### Control Lights

Display Defect	✓	Service Light	✓
ABS Warning Light	✓	ESP Fault/Traction Control Malfunction Light	✓
Airbag Warning Light	✓	Oil Pressure Warning Light	✓
Brake Warning Light	✓	Power Steering Warning Light	✓
Alternator / Battery	✓	No Dashboard Lights	✓

### Equipments Test

Central Locking	✓	Main & Spare Keys Functioning	✓
Electric Windows	✓	Audio Equipment	✓
Parking Sensors / Cameras Functioning	✓	AC / Heating System	✓
Other Equipments	✓		

### Engine

Engine Status / EML	✓	Engine Leak Visible	!
Engine Starts	✓		

### Gearbox

Gear Box	✓
----------	---

### Levels

Brakes Fluid	✓	Coolant Fluid	✓
--------------	---	---------------	---



Test Drive Inspection

Steering Wheel			
Steering   Noise / Anomaly		✓	
Engine			
Engine Noise	✓	The Gears Scratch / Skip / Abnormal Operation	✓
Fume Quantity	✓	Power Loss	✓
Clutch			
Clutch Functioning		✓	
Brake			
Brake System Anomaly		✓	
General			

Test Driven Status                      Not Performed

- ✓ *No troubles detected, good condition or correct tests, according to vehicle age and mileage*
- ! *Damages or malfunction detected that requires repairs by the buyer*
- NA *Not applicable*
- ☐ *Not tested*

Disclaimer

*Please also note the "UserGuide condition report", which shows the scope of the vehicle description.*

[User Guide](#)