



OPEL Corsa Corsa 1.2 16V

VIN NO W0L0SDL68A4014342

Registration Number 68A4014342



MOT Date

2026-10-01

Last Service



Number of Owners

1

Last Service Mileage



Number of Keys

2

First Registration Date

2009-10-08

Odometer Reading

119779 km

Country First Registered

Germany

Inspection Report Summary

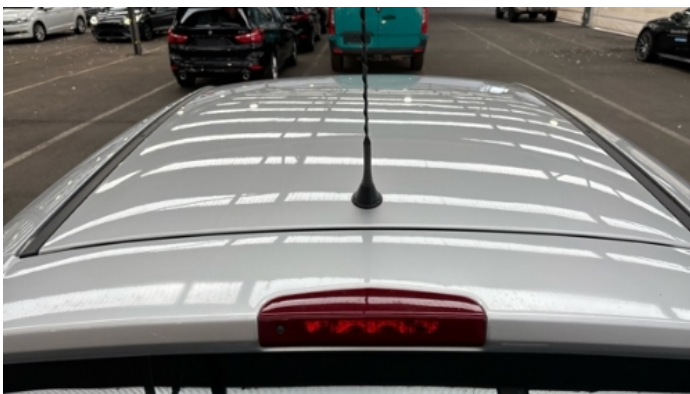
Customer	BCA Online	Report Number	P20250926104449
Inspection Date / Place	2025-09-26 / BCA Neuss	Cosmetic Grade	4

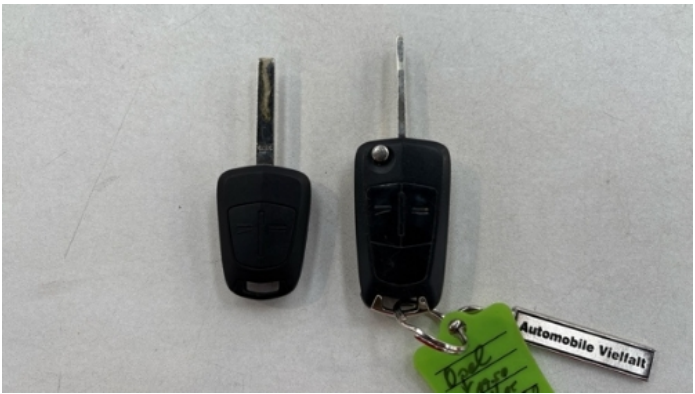
Vehicle Summary

Vehicle Condition	Runner	VAT Type	Margin
Fuel Type	Petrol	Road Worthy	Yes
Colour	Silver	Engine Size (cc)	1229
Engine Size	1.2	No of Doors	5
Body Type	Sedan	Drive Train	Front
Seat Colour		No of Seats	5
Seat Covering Name	schwarz	Seat Covering	Cloth
Charging Cables		NEDC CO2 Rating (q/km)	139
Gearbox Type	Manual		

Vehicle History & Documents

Service Book Available	-	Next Service Mileage	km
Previous Usage		Imported	No
Manufacturer Warrenty			







Equipment

Airbag Status	Remote adjusting wing mirrors	Stability control	Radio
Anti-lock braking	Remote central locking	CD Player	

Equipment Details

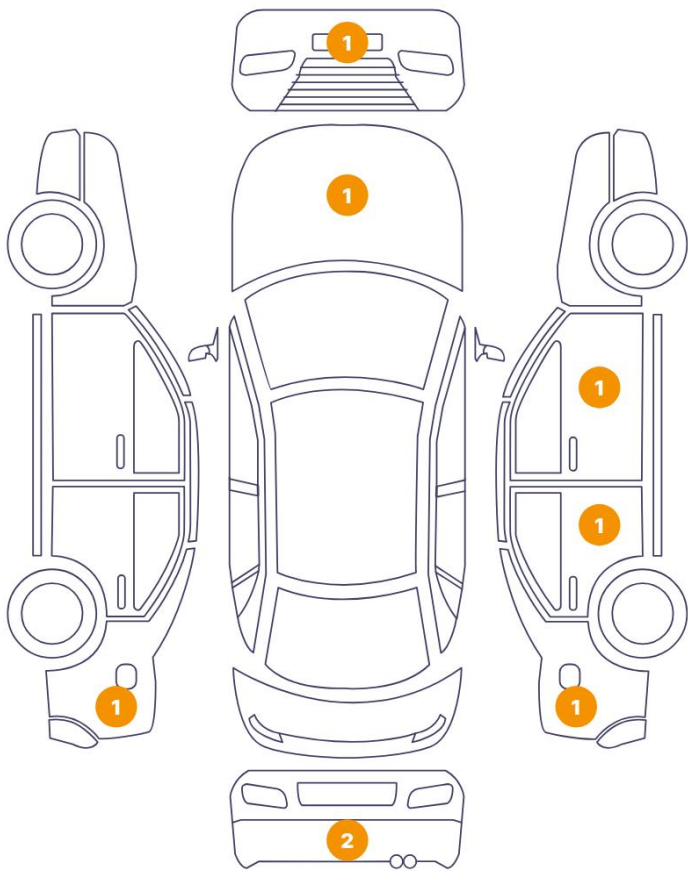
Air Conditioning	Yes
------------------	-----

Wheels & Tyres

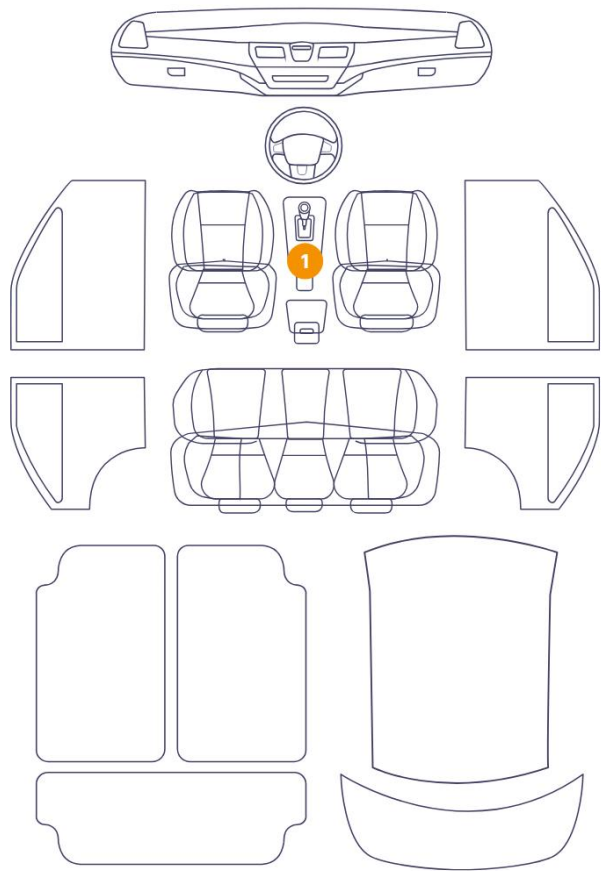
Right Front Tyre Depth	4	Left Front Tyre Depth	4
Right Rear Tyre Depth	4	Left Rear Tyre Depth	4

Cosmetic Damage

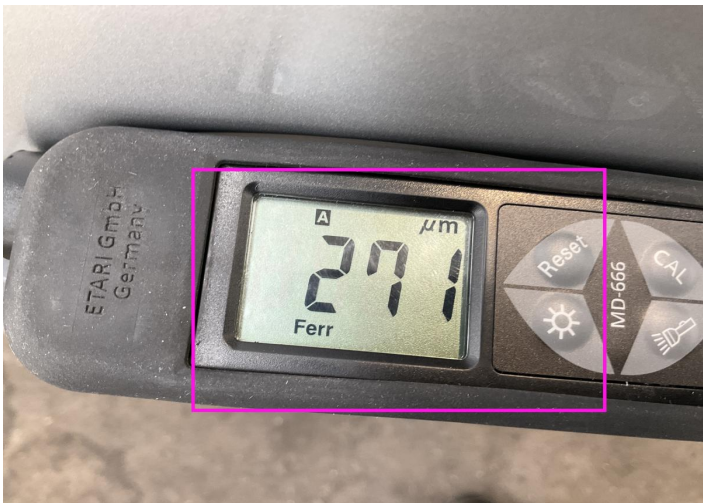
8 Schäden



1 Schäden



Component	Damage	Comments
1 Fender / Back Right	Paint / Poor Previous Repair	
2 Door / Back Right	Paint / Poor Previous Repair	
3 Hood	Bodywork / Dent / Dent	
4 Fender / Back Left	Bodywork / Dent / Dent	
5 Bumper / Back	Paint / Scratch / Scuff	
6 Bumper / Back	Bodywork / Breakage / Hole	
7 Door / Front Right	Bodywork / Dent / Dent	
8 Bumper / Front	Paint / Scratch / Scuff	
9 Gear Knob	Interior / Broken	



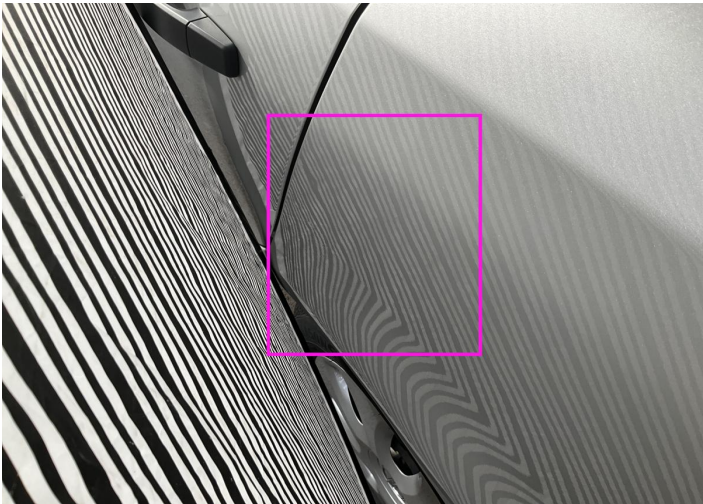
1. Fender / Back Right
Paint / Poor Previous Repair -



2. Door / Back Right
Paint / Poor Previous Repair -



3. Hood
Bodywork / Dent / Dent -



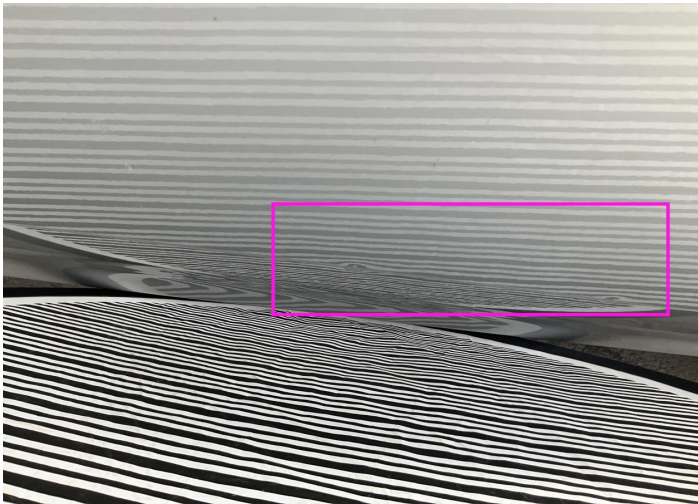
4. Fender / Back Left
Bodywork / Dent / Dent -



5. Bumper / Back
Paint / Scratch / Scuff -



6. Bumper / Back
Bodywork / Breakage / Hole -



7. Door / Front Right
Bodywork / Dent / Dent -



8. Bumper / Front
Paint / Scratch / Scuff -



9. Gear Knob
Interior / Broken -

Mechanical Condition

Control Lights

Display Defect	✓	ABS Warning Light	✓
ESP Fault/Traction Control Malfunction Light	✓	Airbag Warning Light	✓
Oil Pressure Warning Light	✓	Brake Warning Light	✓
Power Steering Warning Light	✓	Alternator / Battery	✓
No Dashboard Lights	✓	Tire Pressure Monitoring System	✓

Equipments Test

Main & Spare Keys Functioning	!	Electric Windows	✓
AC / Heating System	✓		

Engine

Engine Status / EML	✓	Engine Leak Visible	✓
Engine Starts	✓		

Gearbox

Gear Box	✓
----------	---

Levels

Brakes Fluid	✓	Coolant Fluid	!
--------------	---	---------------	---

Test Drive Inspection

Steering Wheel

Steering | Noise / Anomaly

Engine

Engine Noise The Gears Scratch / Skip / Abnormal Operation

Fume Quantity Power Loss

Clutch

Clutch Functioning

Brake

Brake System Anomaly

General

Test Driven Status

- No troubles detected, good condition or correct tests, according to vehicle age and mileage
- Damages or malfunction detected that requires repairs by the buyer
- Not applicable
- Not tested

Disclaimer

Please also note the "UserGuide condition report", which shows the scope of the vehicle description. [User Guide](#)