



OPEL ZAFIRA

Zafira 1.7 CDTI - 125 ch FAP Connect Pack

VIN NO W0L0AHM75E2075989
Registration Number DG542FG



MOT Date	Number of Owners	Number of Keys	Odometer Reading
-	-	1	267000 km
Last Service	Last Service Mileage	First Registration Date	Country First Registered
-	-	2014-05-28	-

Inspection Report Summary

Customer	BCAuto Encheres	Report Number	P20250930093829
Inspection Date / Place	2025-09-30 / BCA SOLOGNE	Cosmetic Grade	2

Vehicle Summary

Vehicle Condition	Non-Runner	VAT Type	Exempt Rate
Fuel Type	Diesel	Gearbox Type	Manual
Colour	Black	Engine Size (cc)	1686
Engine Size	1.7	No of Doors	5
Body Type	Sedan	Drive Train	Front
Seat Colour		No of Seats	7
Charging Cables		NEDC CO2 Rating (q/km)	134

Vehicle History & Documents

Service Book Available	Missing	Next Service Mileage	km
Previous Usage	Normal Use	Imported	No
Manufacturer Warrenty			





Equipment

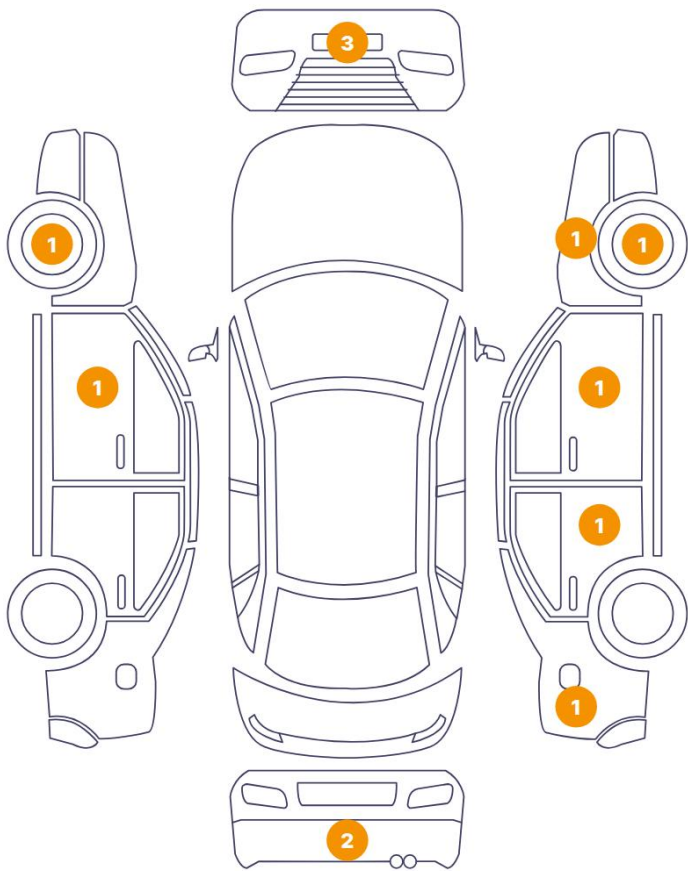
Central locking	Rear parking sensors	Stability control	Roof rails
Radio	Alloys wheels	Front parking sensors	

Equipment Details

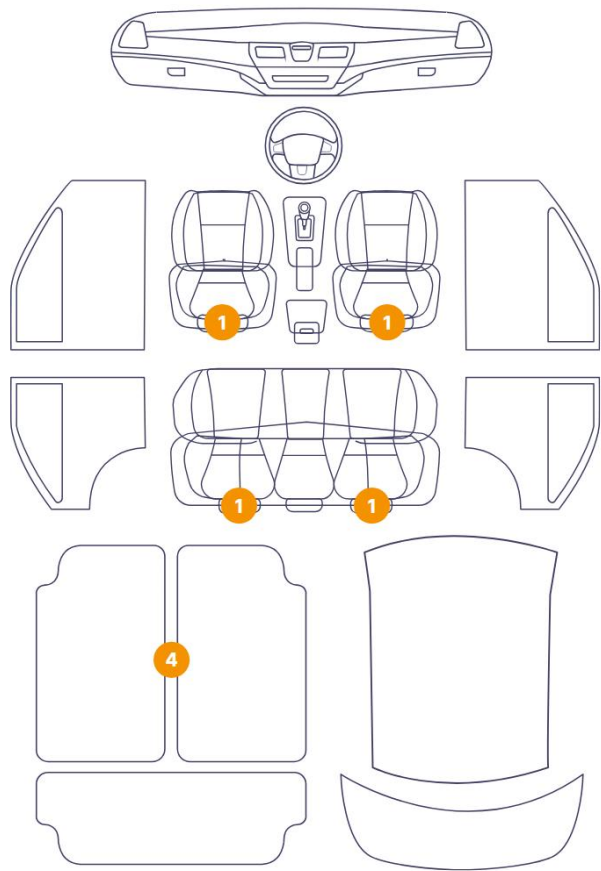
Seat Heating	No	Air Conditioning	No
--------------	----	------------------	----

Cosmetic Damage

12 Dommages



8 Dommages



Component		Damage	Comments
1	Rim	Out of Bodywork / Scratch	
2	Bumper / Front	Bodywork / Assembly	
3	Door / Front Left	Paint / Scratch / Line	
4	Bumper / Back	Bodywork / Dent / Deformation	
5	Bumper / Back	Paint / Scratch / Line	
6	Side Panel / Back Right	Paint / Scratch / Line	
7	Door / Back Right	Paint / Scratch / Line	
8	Door / Front Right	Paint / Scratch / Line	
9	Fender / Front Right	Paint / Scratch / Line	
10	Rim	Out of Bodywork / Scratch	
11	Bumper / Front	Bodywork / Assembly	
12	Bumper / Front	Paint / Scratch / Line	

13	Floor Carpet	Interior / Dirty
14	Seat / Front Left	Interior / Stained
15	Floor Carpet	Interior / Dirty
16	Seat / Back Left	Interior / Dirty
17	Floor Carpet	Interior / Dirty
18	Seat / Back Right	Interior / Stained
19	Floor Carpet	Interior / Dirty
20	Seat / Front Right	Interior / Stained



1. Rim
Out of Bodywork / Scratch -



2. Bumper / Front
Bodywork / Assembly -



3. Door / Front Left
Paint / Scratch / Line -



4. Bumper / Back
Bodywork / Dent / Deformation -



5. Bumper / Back
Paint / Scratch / Line -



6. Side Panel / Back Right
Paint / Scratch / Line -



7. Door / Back Right
Paint / Scratch / Line -



8. Door / Front Right
Paint / Scratch / Line -



9. Fender / Front Right
Paint / Scratch / Line -



10. Rim
Out of Bodywork / Scratch -



11. Bumper / Front
Bodywork / Assembly -



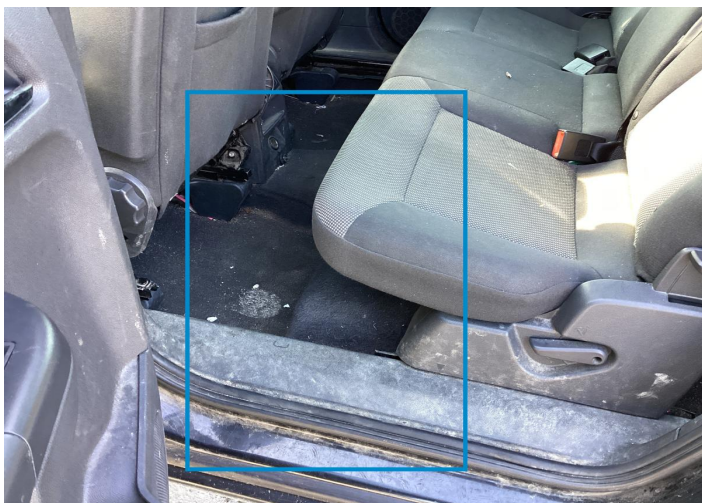
12. Bumper / Front
Paint / Scratch / Line -



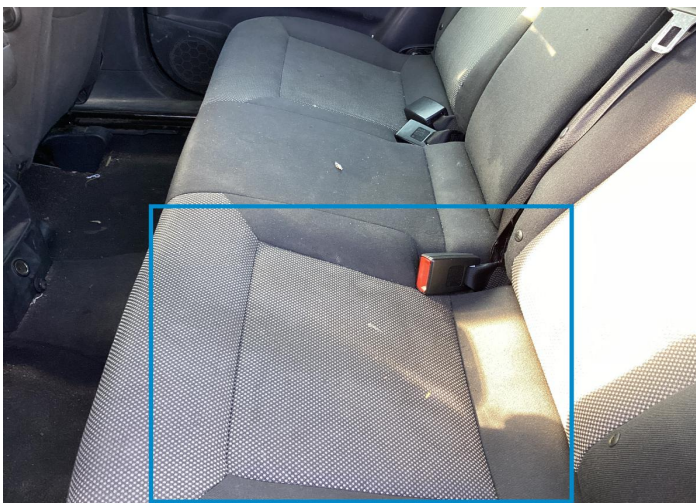
13. Floor Carpet
Interior / Dirty -



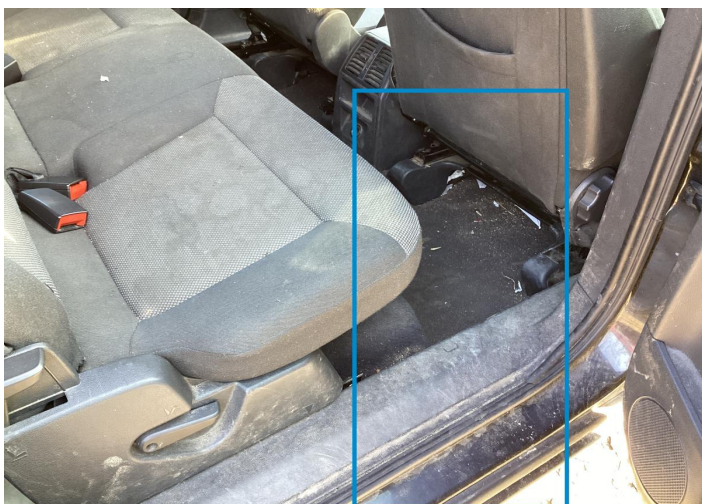
14. Seat / Front Left
Interior / Stained -



15. Floor Carpet
Interior / Dirty -



16. Seat / Back Left
Interior / Dirty -



17. Floor Carpet
Interior / Dirty -



18. Seat / Back Right
Interior / Stained -




19. Floor Carpet
Interior / Dirty -



20. Seat / Front Right
Interior / Stained -

Mechanical Condition


Tyres

Presence Anti-Theft Lock Nut 

 *No troubles detected, good condition or correct tests, according to vehicle age and mileage*

 *Damages or malfunction detected that requires repairs by the buyer*

 *Not applicable*

 *Not tested*

Disclaimer Section

The test drive is done on a flat surface and lasts about 2 minutes. The driven distance is a minimum of 300 meters, including a u-turn, an acceleration and a braking phase. The highest speed achieved during this test is 50km/h. The mechanical check is a visual and dynamic diagnosis without any disassembly. We cannot guarantee any mechanical wear part.