



OPEL Astra

Astra 1.7 CDTI Caravan DPF

VIN NO W0L0AHL3592054104
Registration Number 3592054104



MOT Date



Last Service

2017-06-10

Number of Owners



Last Service Mileage

119202

Number of Keys



First Registration Date

2009-01-14

Odometer Reading



223980 km

Country First Registered



Inspection Report Summary

Customer	BCA Online	Report Number	P20250922104042
Inspection Date / Place	2025-09-22 / Dello Lübeck	Cosmetic Grade	4

Vehicle Summary

Vehicle Condition	Runner	VAT Type	Margin
Fuel Type	Diesel	Road Worthy	Yes
Colour	Silver	Engine Size (cc)	1686
Engine Size	1.7	No of Doors	5
Body Type	Stationwagon / Estate	Drive Train	Front
Seat Colour		No of Seats	5
Seat Covering Name	Schwarz, grau	Seat Covering	Cloth
Charging Cables		NEDC CO2 Rating (q/km)	149
Gearbox Type	Manual		

Vehicle History & Documents

Service Book Available	Present	Next Service Mileage	km
Previous Usage		Imported	No
Manufacturer Warrenty			







Equipment

Trip Computer	Anti-lock braking	Cruise control	Front fog lamps
Remote adjusting wing mirrors	Roof rails	Split folding rear seats	Xenon headlamps
Leather steering wheel	Rain sensitive windscreen wipers	Airbag Status	Auxiliary Socket
Diesel particulate filter	Headlamp wash/wipe	Remote central locking	Satellite navigation
Stability control	CD Player	Radio	

Equipment Details

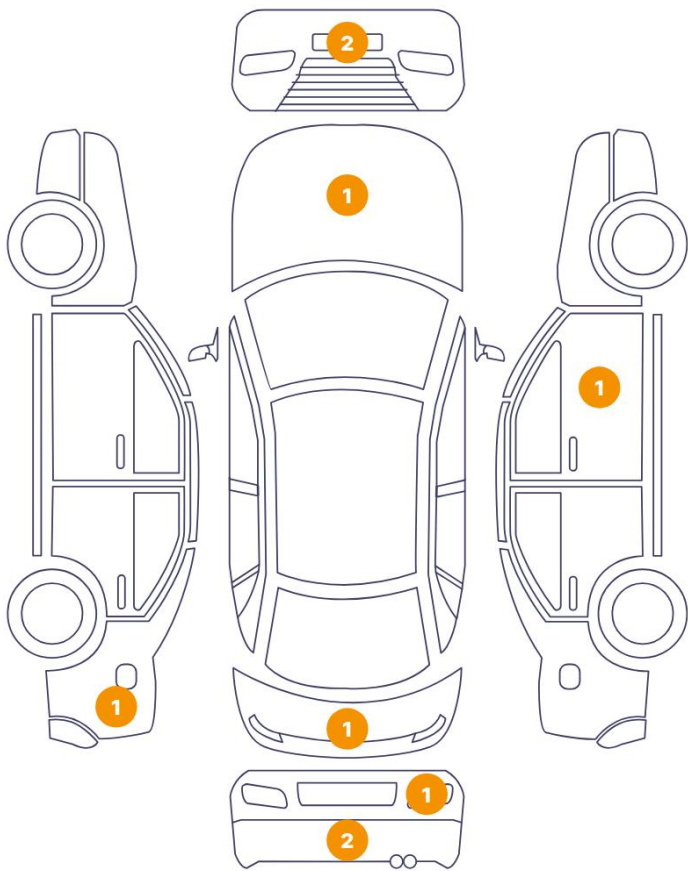
Air Conditioning	Climate Control
------------------	-----------------

Wheels & Tyres

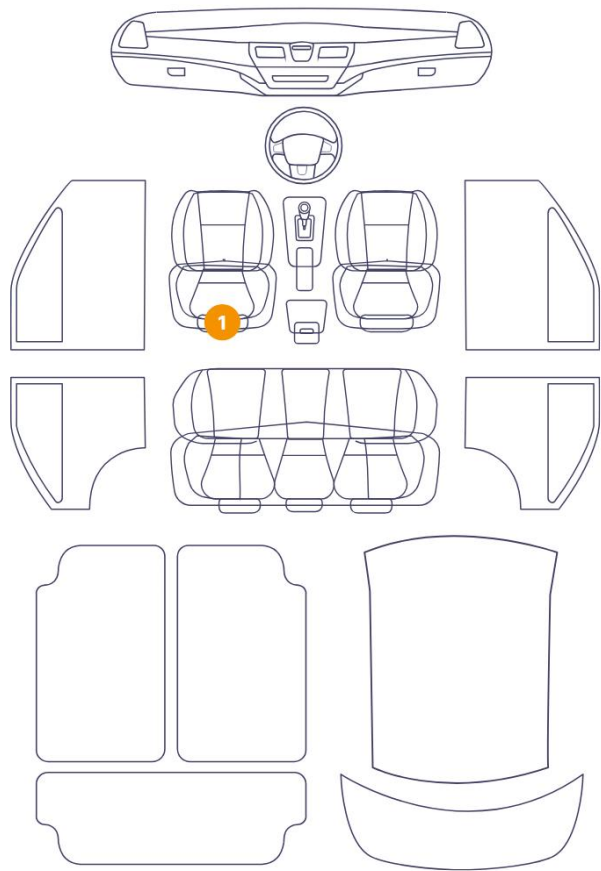
Left Rear Tyre Depth	6	Right Rear Tyre Depth	6
Left Front Tyre Depth	5	Right Front Tyre Depth	5

Cosmetic Damage

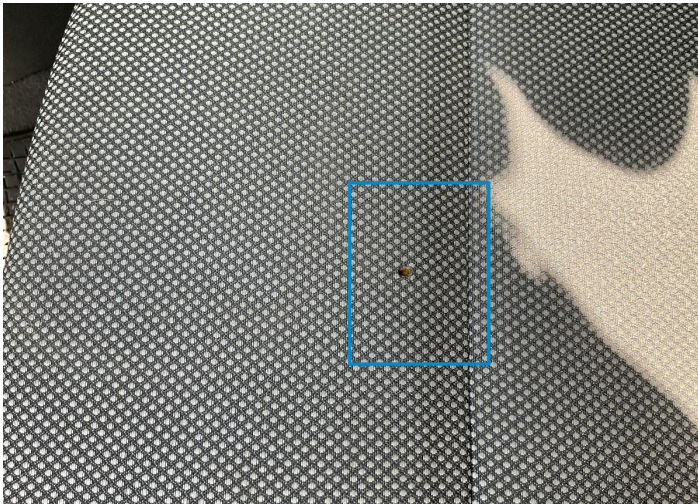
9 Schäden



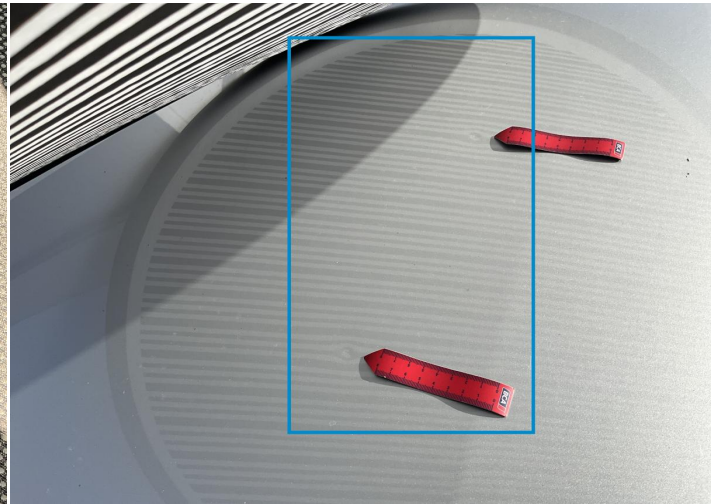
1 Schäden



Component		Damage	Comments
1	Seat / Front Left	Interior / Holed	
2	Hood	Bodywork / Dent / Deformation	
3	Mirror / Front Right	Paint / Scratch / Scuff	
4	Bumper / Front	Paint / Scratch / Scuff	
5	Bumper / Front	Missing Part	
6	Fender / Back Left	Bodywork / Dent / Deformation	
7	Bumper / Back	Paint / Scratch / Scuff	
8	Tailgate	Paint / Corrosion	
9	Bumper / Back	Paint / Scratch / Scuff	
10	Back Light / Right	Paint / Chemical Damage	



1. Seat / Front Left
Interior / Holed -



2. Hood
Bodywork / Dent / Deformation -



3. Mirror / Front Right
Paint / Scratch / Scuff -



4. Bumper / Front
Paint / Scratch / Scuff -



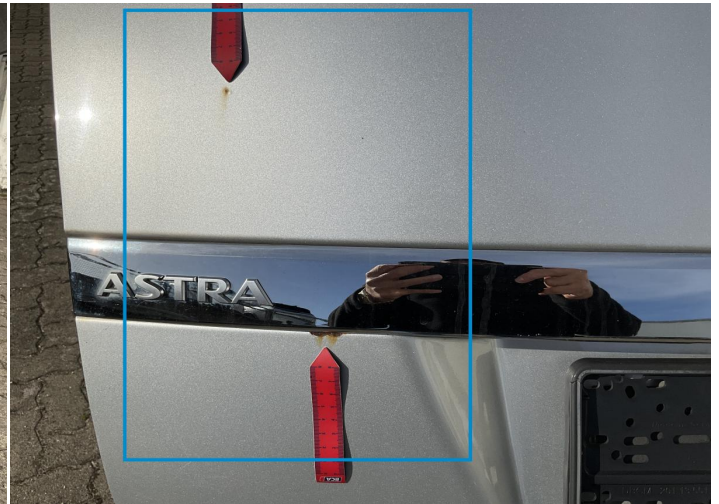
5. Bumper / Front
Missing Part -



6. Fender / Back Left
Bodywork / Dent / Deformation -



7. Bumper / Back
Paint / Scratch / Scuff -



8. Tailgate
Paint / Corrosion -



9. Bumper / Back
Paint / Scratch / Scuff -



10. Back Light / Right
Paint / Chemical Damage -

Mechanical Condition

Control Lights

Display Defect	✓	Service Light	❗
ABS Warning Light	✓	ESP Fault/Traction Control Malfunction Light	✓
Diesel Particulate Filter Light	✓	Airbag Warning Light	✓
Oil Pressure Warning Light	✓	Brake Warning Light	✓
Power Steering Warning Light	✓	Alternator / Battery	✓
No Dashboard Lights	✓		

Equipments Test

Central Locking	✓	Main & Spare Keys Functioning	❗
Electric Windows	✓	Navigation System	✓
Audio Equipment	✓	AC / Heating System	❗
Other Equipments	✓		

Engine

Engine Status / EML	✓	Engine Leak Visible	✓
Engine Starts	✓		

Levels

Brakes Fluid	✓	Coolant Fluid	✓
--------------	---	---------------	---

Test Drive Inspection

Steering Wheel

Steering | Noise / Anomaly

Engine

Engine Noise The Gears Scratch / Skip / Abnormal Operation

Fume Quantity Power Loss

Clutch

Clutch Functioning

Brake

Brake System Anomaly

General

Test Driven Status

- No troubles detected, good condition or correct tests, according to vehicle age and mileage
- Damages or malfunction detected that requires repairs by the buyer
- Not applicable
- Not tested

Disclaimer

Please also note the "UserGuide condition report", which shows the scope of the vehicle description. [User Guide](#)