



Expertise

Protocol number: 41305949  
Order No. / Reference: 25126487  
Inspection date: 28 Aug 2025

Manufacturer: Opel	Model: Mokka 1.2 DI Turbo Automatik GS
VIN: VXXKUSHNSXRW037407	



Vehicle details	
Manufacturer / Type / Model / Equipment	
Opel Mokka 1.2 DI Turbo Automatik GS	
Vehicle Identification number	VXXKUSHNSXRW037407
Mileage (Read)	11,690 km
First registration	23 Jul 2024
Number of holders	1
Next periodical technical inspection	07/2027
(Report not on hand)	
Power / Engine displacement	96 kw / 1,199 ccm
Fuel type / Cylinder	Petrol / 3
Gearbox / Number of gears	Automatic / 8
Type of drive	Front drive
Type of vehicle	SUV
Colour / colour code	Karbon Schwarz Metallic
Doors / Seats	5 / 5
Upholstery type	Cloth / leather combination
Colour of upholstery	Black-Anthracite
Re/Import	no
Vehicle with smoke odor	no
Driving readiness	Roadworthy



## Vehicle details

<b>Maintenance booklet / proof</b>	Available / complete	<b>Next maintenance in</b>	-900 km
<b>Key is / should be</b>	2 / 2	<b>FZG documents</b>	ZB#2 (B) was available (copy), ZB#1 (S) was not available
		<b>Letter No.</b>	HB473438
<b>Previous damage / Accident</b>	None detectable	<b>Repainting</b>	None detectable
<b>Inspection conditions</b>	sufficient	<b>Lifting equipment / pit</b>	yes
<b>Test drive</b>	short drive on the company premises	<b>Engine function test</b>	Performed
<b>Driving readiness</b>	Roadworthy		
<b>Manufacturer key number/ type code number</b>	2525 / AAT 00005		
<b>Emission standard</b>	EURO6;WLTP;EA;PI/CI;M, N1, N2	<b>Fine dust sticker</b>	
<b>Permitted total weight</b>	1,740 kg	<b>Empty weight</b>	

## Tyres

### Mounted tyres

#	Tyre size	Type of tyre	Manufacturer	Tread depth
1)	215/60 R17 100H	All-season tyres on Light alloy	Goodyear	5mm / 5mm
2)	215/60 R17 100H	All-season tyres on Light alloy	Goodyear	6mm / 6mm

### Replacement

Typ	Tyre size	Type of tyre	Manufacturer	Tread depth
	Tirefit	Expiration date 01/2030		

**Legend:** Tread depth information for tires on the left is in the first place, for tires on the right is in the second place on the axle in the direction of travel



## Equipment

### Standard equipment

- 2 ignition keys, both with radio remote control and foldable
- Storage compartments (storage compartment in the center console, front and rear - storage compartment in the front doors, suitable for 1.5-liter drinks bottles - storage compartment in the rear doors, suitable for 0.5-liter drinks bottles - cup holder in the center console - glove compartment)
- Aluminum sports pedals
- Exterior mirrors in black
- Exterior mirrors, electrically adjustable and heated, manually folding
- Roof design line in high-gloss black
- Roof spoiler, black
- Third brake light
- Electronic Stability Program Plus (ESP Plus)
- Electric windows front and rear (with touch function and anti-pinch protection)
- Forward Collision Warning with Automatic City Emergency Braking and Pedestrian Detection (Active from 5 km/h to 85 km/h. Monitors the distance to the vehicle ahead. If the vehicle or pedestrian is approached too quickly, the driver is notified via a warning tone and a message in the driver information display. If there is a risk of collision, the braking system is prepared and, if necessary, emergency braking is initiated to minimize the consequences of a potential collision.)
- Automatic climate control (with activated carbon filter, manual air recirculation, automatic air distribution and sun position sensor)
- LED indicators, front and rear
- LED headlights
- Steering wheel: vegan synthetic leather steering wheel, flattened at the bottom with shift paddles
- Make-up mirror in sun visor, illuminated, driver and passenger
- Fatigue detection (Detects signs of driver fatigue based on steering behavior and driving time and issues a visual and audible warning (3-stage warning).)
- OpelConnect with telematics services (Connect One: - Emergency/ Breakdown call - Vehicle status and information - Route and journey information Connect Plus: - Live Navigation (including real-time traffic information, fuel prices, POI search; only in conjunction with Multimedia Navi and Multimedia Navi Pro) - Remote Control (activating the headlights and horn as well as locking and unlocking the vehicle remotely via the myOpel app))
- Tire pressure warning
- Wheels: Tire repair kit (with tire sealant and 12-volt compressor (without jack))
- Rear view camera including parking pilot, rear parking aid (180-degree panoramic rear view camera)
- Opel Blitz, "Mokka" lettering and air intake surrounds in high-gloss black (Opel Vizor with frame in high-gloss black)
- Storage: Pockets on the back of the front seats (driver and passenger)
- Adaptive brake light
- Airbag driver and passenger side
- Airbag: front and side airbags
- Airbag: Head airbags, front and rear outside
- Actively controlled air intakes (Active Aero Shutter)
- Anti-lock braking system (ABS) with cornering brake control and brake assist
- Hill Start Assist
- Roof and A-pillar in Carbon Black
- Headliner, black
- Decorative strips, silver
- Electronic brake force distribution (EBD)
- Chassis: Driving modes (with 3 adjustable driving modes: ECO, Normal and Sport)
- High beam assistant
- Footwell heating, rear
- Cruise control with intelligent speed limiter (The intelligent speed limiter, in conjunction with traffic sign recognition, allows for quick adjustment of the speed)
- Transmission: 8-speed automatic
- Heated rear window
- Rear window wiper
- Rear shelf
- Child safety lock in the rear doors, manual
- Headrests in the front and 3 headrests in the rear, height adjustable
- LED ambient lighting in door storage compartments, front
- LED taillights
- LED daytime running lights
- Steering column, height and tilt adjustable
- Reading lights, front
- Center armrest, front
- Multi-Collision Braking (In the event of a collision or unavoidable accident, the system is activated and brakes the vehicle to a stop to avoid further collisions with other road users or obstacles.)
- Gasoline particulate filter
- Upholstery: Fabric/premium leather look (with decorative stitching and design accents in gray)



- Visibility equipment (rain sensor at the front - automatic dimming beam with tunnel detection - interior rearview mirror, automatically dimming)
- Seats: Driver's seat 6-way manually adjustable (length, height and backrest angle)
- Seats: Comfort seats, front
- Seats: Preparation for ISOFIX child seat fastening system, front passenger seat and rear outside
- Lane Keeping Assist (warning in case of unintentional lane departure (between 65 km/h and 180 km/h) via a control lamp in the driver information display)
- 12 volt socket (in the center console, front)
- Underbody protection look, front and rear, in high-gloss black
- Immobiliser
- tinted thermal insulation glazing
- Central locking with radio remote control
- Radio: Multimedia radio (with 7" touchscreen and fully digital 7" driver information display - Bluetooth audio streaming - Automatic music recognition - Hands-free system - Display of phone book and call lists - Smartphone integration via Apple CarPlay and Android Auto - Display and operation of selected apps and functions via the 7" touchscreen or voice control, e.g. navigation, music, telephone - Reading and dictation of text messages - Siri - Digital radio reception DAB+ - Steering wheel remote control - 4x20 watts, FM/AM - USB front - 2 USB rear)
- Power steering, speed-dependent
- Seat belts (three-point seat belts on all seats: - Belt force limiters and belt tensioners, front and rear outside - Warning audible signal and light for unfastened belts, front)
- Seats: Passenger seat 6-way manually adjustable (length, height and backrest angle - pockets on the front seat backs)
- Seats: Rear seat backrest can be folded down in a 60:40 ratio
- Solar Protect heat-insulating glazing (heavily tinted, in the rear)
- Start/Stop System (Reinforced starter - High-performance battery - Switch to deactivate the start/stop function)
- Traction control with engine and brake intervention TC Plus
- Traffic sign recognition (detection of speed limits and their cancellation as well as display of the recognized sign in the driver information display (depending on visibility and weather conditions))

#### Extra equipment

- Paintwork: Metallic special color Carbon Black
- Package: Comfort Package GS & Ultimate (seat heating, multi-stage, driver and front passenger - heated steering wheel made of vegan synthetic leather, flattened at the bottom - double trunk floor)
- Wheels: Light alloy (4) 5 double spokes 6.5 J x 17 in BiColor Black with all-season tires (with all-season tires 215/60/R17)
- Package: Infotainment package GS & Ultimate (Multimedia Navi Pro: - with 10" touchscreen color display and fully digital 12" driver information display Navigation: - Navigation system with integrated memory - European road map (including Russia and Turkey) - 3D map display - Dynamic route guidance via map and/or arrow display - Display of points of interest - Tour planning - GPS module General: - Voice control for audio, telephone, and navigation)

#### Brief expert findings

Documents submitted	At the time of the inspection, the registration certificate Part 2 (letter) was available, but the registration certificate Part 1 (certificate) was not. (Copy)
VIN comparison	The vehicle identification number (VIN) was read from the vehicle and its conformity with the submitted documents was verified during the inspection by the undersigned.
Inspection	The inspection conditions were sufficient for the assessment of the vehicle. Lifting equipment and a pit were available for examining the vehicle.
Test drive	A short maneuvering and shunting trip was carried out on the company premises.
Engine function test	An engine test run was performed.
Driving readiness	The vehicle was drivable at the time of inspection.

#### Value reducing factors

No.	Component group	Description
1	Door - rear right side	Door - Scratch(es) - Smart repair
2	Rear bumper	Rear bumper - Scratch(es) - Smart repair
3	Misc.	Inspection / maintenance - Due - Perform



No.	Component group	Description
4	Bonnet	Bonnet (Verätzungen) - Paint defect - Paint
5	Roof	Roof (Verätzungen) - Paint defect - Paint

## Wear and tear

No.	Component group	Description
1	Body	Body - Scratch(es)

The vehicle shows signs of wear commensurate with its age and use.

## Order/Scope of order

The order was placed to prepare a sales report for the vehicle described. This includes the following:

- Description of core relevant information about the vehicle
- Documentation of equipment features  
(*Delivery by third-party service providers*)
- Documentation of damage, defects, missing parts
- Documentation of previous damage, unrepaired previous damage, repainting
- a brief visual or functional inspection of the equipment details if possible.  
(*Functional tests of driver assistance systems are not included in the scope of services!*)
- a photo documentation of the vehicle

## Basis for the order

This product is based on the Alphabet Fuhrpark GmbH guidelines for vehicle returns and valuations. The expert makes the explicit findings in each individual case objectively within the framework of the specified standards based on his or her own expertise.

The vehicle inspection takes place in a disassembled state.

Damage or defects that can only be detected during disassembly/diagnosis work or through advanced knowledge remain within the scope of the prognosis risk. An extended risk exists for concealed defects caused by fraudulent deception and not identifiable by the expert.

Damage or defects resulting from normal use or wear and tear of the vehicle will be accepted according to the applicable standard.

There was no explicit identification or monetary consideration of the expected features within the product.

Features which in their nature and severity slightly exceed normal use but do not constitute unacceptable damage will be documented and identified under signs of use if necessary.

Damage or defects which, according to the underlying standard, can no longer be attributed to normal use or wear and tear are listed in the product under "Depreciating Factors".

Depending on the product specification, a monetary ID can be provided. If this takes place, the costs can be 100% d or pro rata depending on the vehicle's age and mileage.

## Previous damages

Apparently, no repaired previous damage could be found on the vehicle.



Figure 1: Diagonal front (left)



Figure 2: Diagonal front (right)



Figure 3: Diagonal rear (left)



Figure 4: Diagonal rear (right)



Figure 5: Interior - front



Figure 6: Interior - rear



Figure 7: Instrument cluster



Figure 8: Instrument panel



Figure 9: interior 360° view



Figure 10: Cargo area

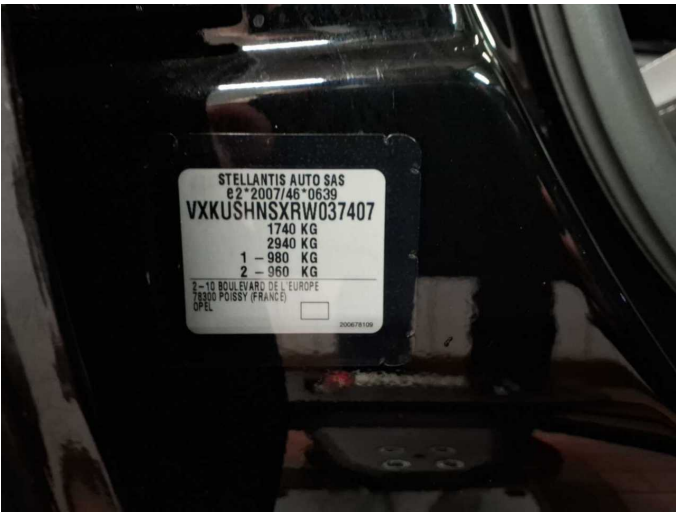


Figure 11: VIN



Figure 12: Mounted tyres



Figure 13: Documents



Figure 14: Documents

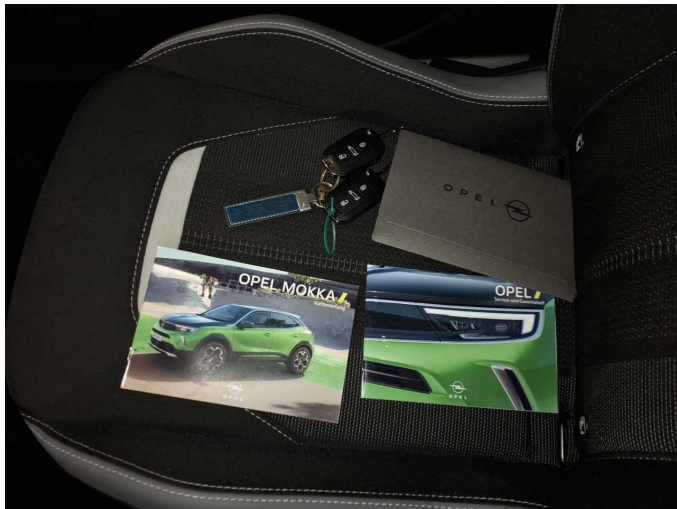


Figure 15: Documents

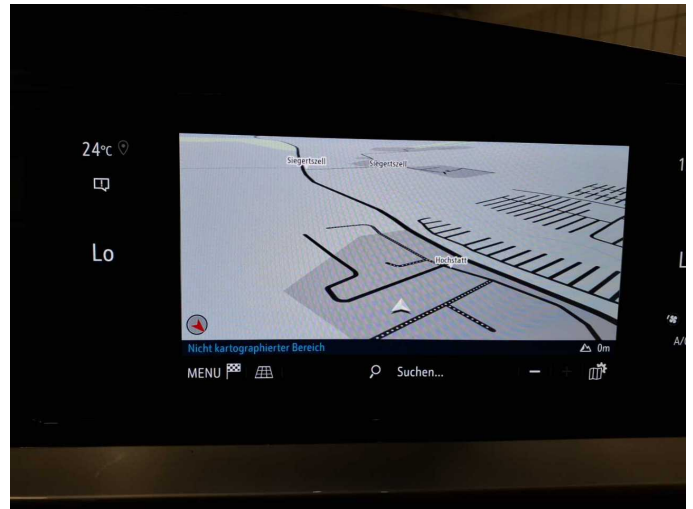


Figure 16: Navigation

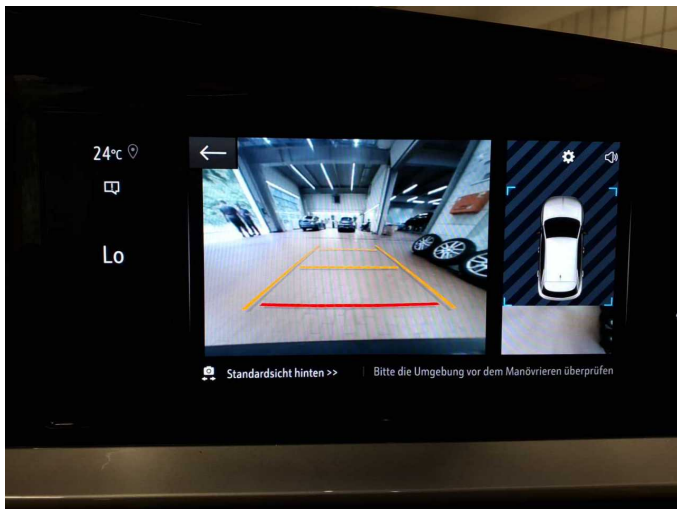


Figure 17: Misc.



Figure 18: Misc.



Figure 19: Misc.



Figure 20: Misc.



Figure 21: Misc.



Figure 22: Misc.



Figure 23: Misc.



Figure 24: Misc.



Figure 25: Misc.



Figure 26: Misc.



Figure 27: Misc.



Figure 28: Misc.



Figure 29: Misc.



Damage 1: Door - rear right side: Door - Scratch(es) - Smart repair



**Damage 1:** Door - rear right side: Door - Scratch(es) - Smart repair



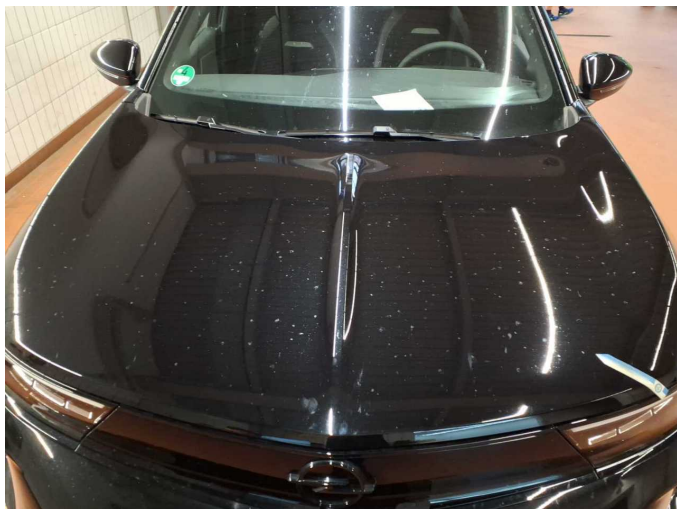
**Damage 2:** Rear bumper: Rear bumper - Scratch(es) - Smart repair



**Damage 2:** Rear bumper: Rear bumper - Scratch(es) - Smart repair



**Damage 3:** Misc.: Inspection / maintenance - Due - Perform



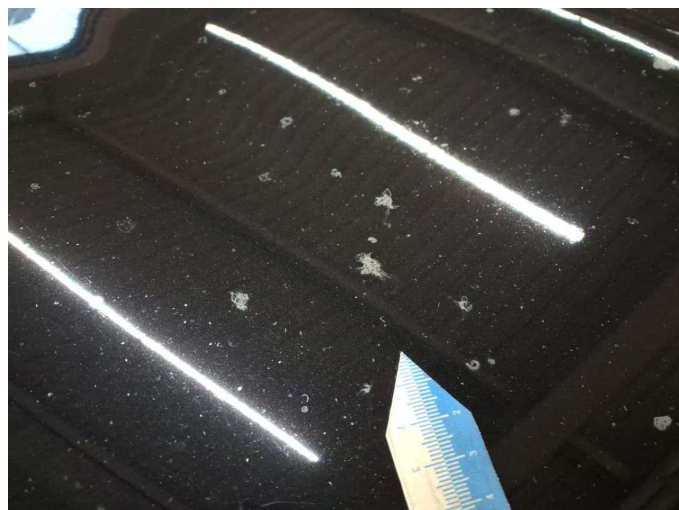
**Damage 4:** Bonnet: Bonnet (Verätzungen) - Paint defect - Paint



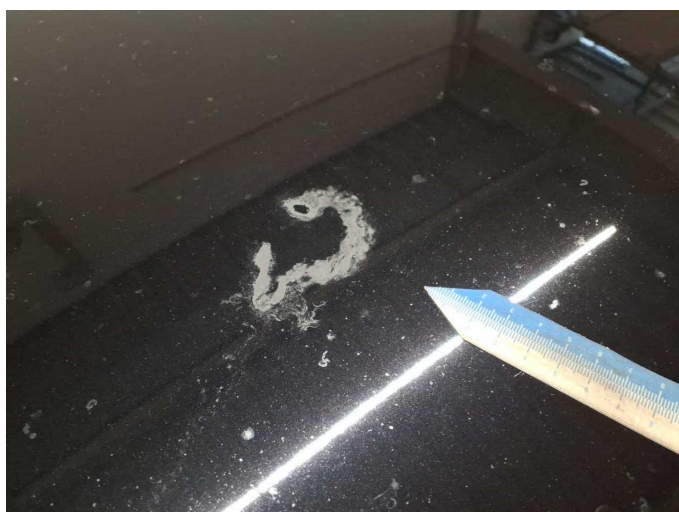
**Damage 4:** Bonnet: Bonnet (Verätzungen) - Paint defect - Paint



**Damage 4:** Bonnet: Bonnet (Verätzungen) - Paint defect - Paint



**Damage 4:** Bonnet: Bonnet (Verätzungen) - Paint defect - Paint



**Damage 5:** Roof: Roof (Verätzungen) - Paint defect - Paint



**Damage 5:** Roof: Roof (Verätzungen) - Paint defect - Paint