



OPEL Corsa

Corsa 1.2 Direct Injection Turbo Start/Stop

VIN NO VXXUPHNEKN4147055

Registration Number EKN4147055



MOT Date



Last Service



Number of Owners



Last Service Mileage



Number of Keys



First Registration Date



2022-03-30

Odometer Reading



72719 km

Country First Registered



Inspection Report Summary

Customer	BCA Online	Report Number	P20250904162510
Inspection Date / Place	2025-09-04 / Dello Reinbek	Cosmetic Grade	3

Vehicle Summary

Vehicle Condition	Runner	VAT Type	Qualifying
Fuel Type	Petrol	Road Worthy	Yes
Colour	Black	Engine Size (cc)	1199
Engine Size	1.2	No of Doors	5
Body Type	Sedan	Drive Train	Front
Seat Colour		No of Seats	5
Seat Covering Name	Schwarz, grau	Seat Covering	Cloth
Charging Cables		WLTP CO2 Emissions	
Gearbox Type	Manual		

Vehicle History & Documents

Service Book Available	Present Unrecorded	Next Service Mileage	km
Previous Usage		Imported	No
Manufacturer Warrenty			







Equipment

Trafficsignrecognition	USB Socket	AndroidAuto	AppleCarPlay
Cruise control	Fatiguewarningsystem	Remote central locking	Stability control
Laneassist	Rain sensitive windscreen wipers	Trip Computer	Airbag Status
Anti-lock braking	Bluetooth telephone interface	Digital Radio	Remote adjusting wing mirrors
Split folding rear seats	Emergencybrakeassist	Leather steering wheel	Rear parking sensors

Equipment Details

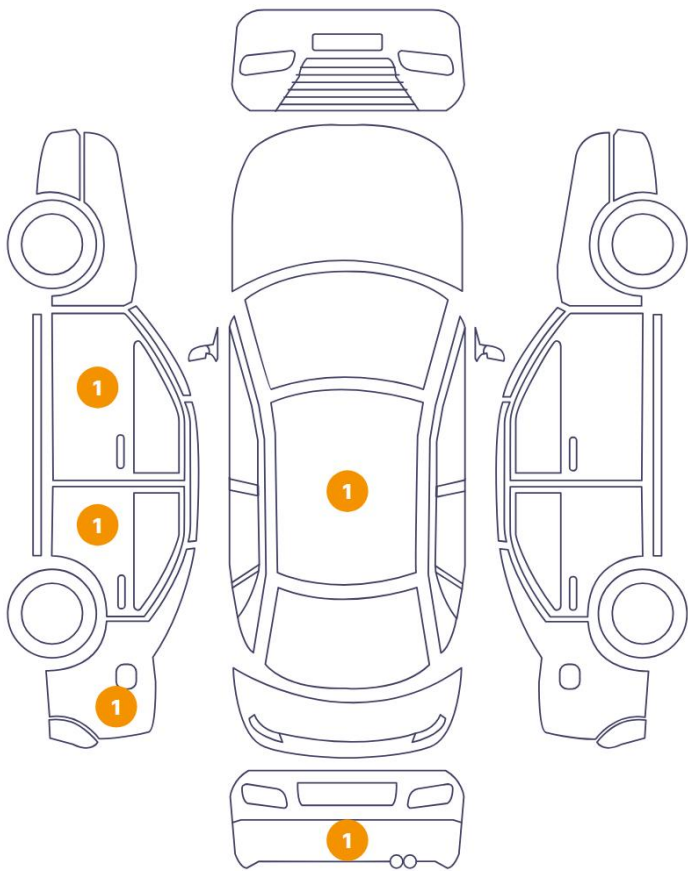
Air Conditioning	Yes	Seat Heating	Front
------------------	-----	--------------	-------

Wheels & Tyres

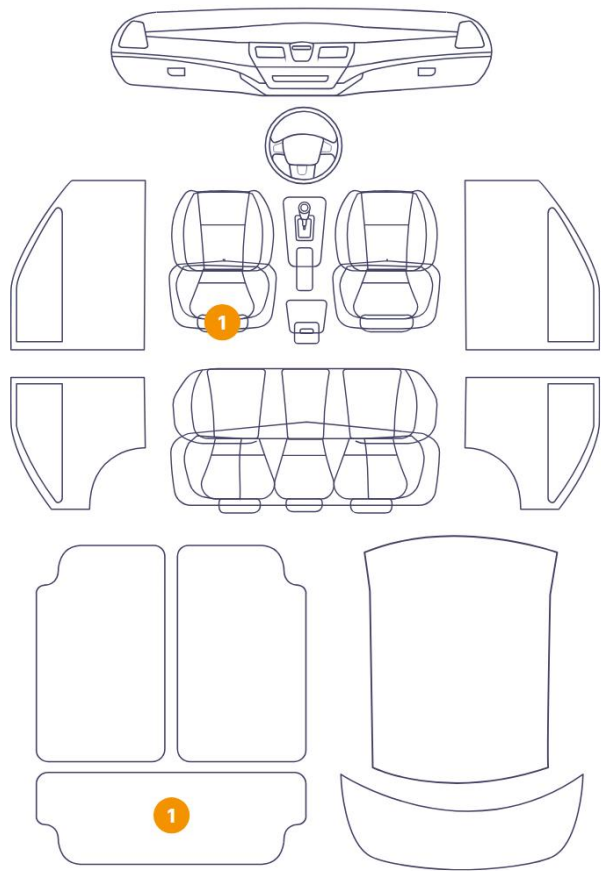
Left Rear Tyre Depth	6	Right Rear Tyre Depth	6
Left Front Tyre Depth	5	Right Front Tyre Depth	5

Cosmetic Damage

5 Schäden



6 Schäden



Component		Damage	Comments
1	Door / Back Left	Paint / Poor Previous Repair	
2	Side Panel / Back Left	Paint / Poor Previous Repair	
3	Luggage Space Cover / Back	Interior / Missing	
4	Other	Interior / Missing	
5	Cabin	Interior / Dirty	
6	Door / Front Left	Bodywork / Dent / Dent	
7	Antenna Rod	Missing Part	
8	Bumper / Back	Paint / Scratch / Scuff	
9	Seat / Front Left	Interior / Dirty	
10	Cabin	Interior / Dirty	
11	Cabin	Interior / Dirty	



1. Door / Back Left
Paint / Poor Previous Repair -



2. Side Panel / Back Left
Paint / Poor Previous Repair -



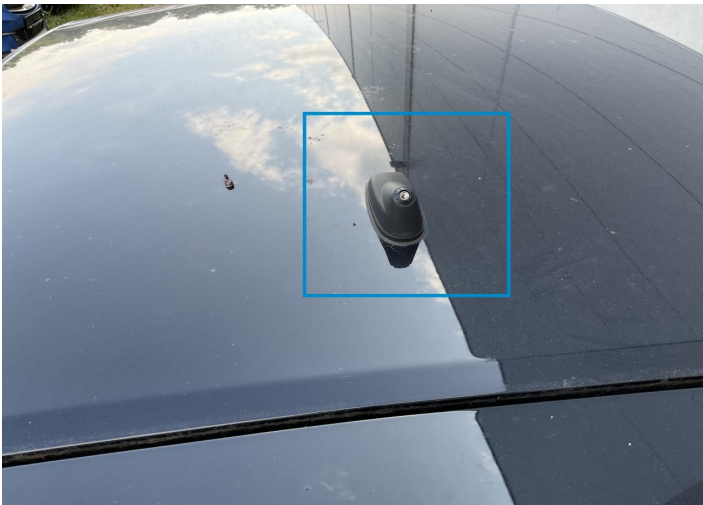
3. Luggage Space Cover / Back
Interior / Missing -



4.
Interior / Missing -



6. Door / Front Left
Bodywork / Dent / Dent -



7. Antenna Rod
Missing Part -



8. Bumper / Back
Paint / Scratch / Scuff -



9. Seat / Front Left
Interior / Dirty -



10. Cabin
Interior / Dirty -



11. Cabin
Interior / Dirty -

Mechanical Condition

Equipments Test

Central Locking	✓	Electric Windows	✓
Audio Equipment	✓	AC / Heating System	✓
Main & Spare Keys Functioning	✓	Parking Sensors / Cameras Functioning	✓
Other Equipments	✓		

Control Lights

ABS Warning Light	✓	ESP Fault/Traction Control Malfunction Light	✓
Airbag Warning Light	✓	Oil Pressure Warning Light	✓
Brake Warning Light	✓	Power Steering Warning Light	✓
Alternator / Battery	✓	No Dashboard Lights	!
Display Defect	✓	Service Light	✓
Tire Pressure Monitoring System	✓		

Engine

Engine Status / EML	✓	Engine Leak Visible	✓
Engine Starts	✓		

Levels

Brakes Fluid	✓	Coolant Fluid	✓
--------------	---	---------------	---

Test Drive Inspection

Steering Wheel			
Steering Noise / Anomaly		✔	
Engine			
Engine Noise	✔	The Gears Scratch / Skip / Abnormal Operation	✔
Fume Quantity	✔	Power Loss	✔
Brake			
Brake System Anomaly		✔	
Clutch			
Clutch Functioning		✔	
General			
Test Driven Status		✔	
✔ <i>No troubles detected, good condition or correct tests, according to vehicle age and mileage</i>			
! <i>Damages or malfunction detected that requires repairs by the buyer</i>			
NA <i>Not applicable</i>			
= <i>Not tested</i>			

Disclaimer

Please also note the "UserGuide condition report", which shows the scope of the vehicle description.

[User Guide](#)