



# OPEL Corsa

## Corsa 1.2 Direct Injection Turbo Start/Stop

VIN NO VVKUPHNEKN4109129  
Registration Number EKN4109129



MOT Date	Number of Owners	Number of Keys	Odometer Reading
2027-01-01	2	2	40532 km
Last Service	Last Service Mileage	First Registration Date	Country First Registered
-	-	2022-01-18	Germany

### Inspection Report Summary

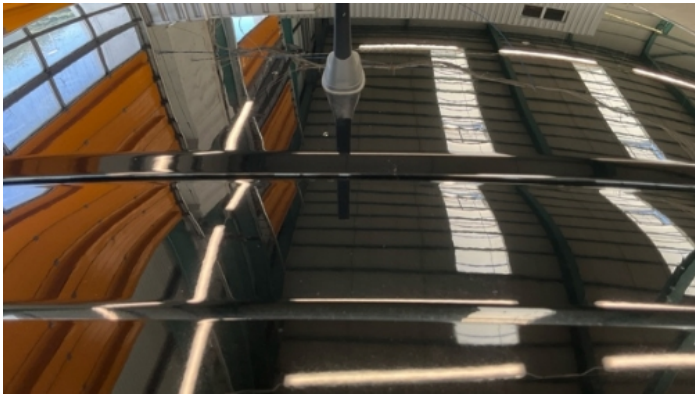
Customer	BCA Online	Report Number	P20250826141310
Inspection Date / Place	2025-08-26 / ARS Altmann AG Riedstadt	Cosmetic Grade	1

### Vehicle Summary

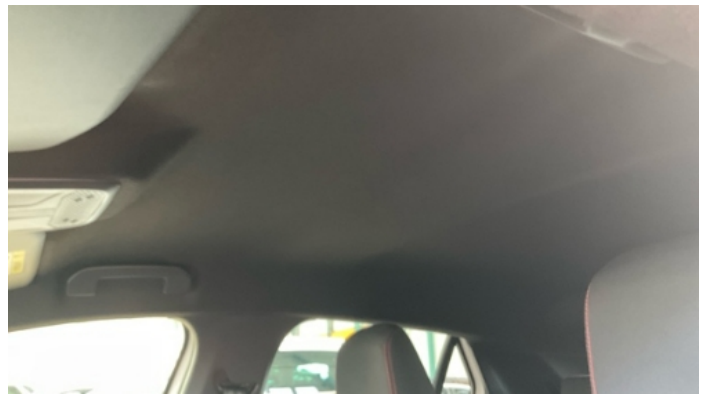
Vehicle Condition	Runner	VAT Type	Margin
Fuel Type	Petrol	Road Worthy	Yes
Colour	White	Engine Size (cc)	1199
Engine Size	1.2	No of Doors	5
Body Type	Sedan	Drive Train	Front
Seat Colour		No of Seats	5
Seat Covering Name	Anthrazit	Seat Covering	Cloth
Charging Cables		WLTP CO2 Emissions	
Gearbox Type	Manual		

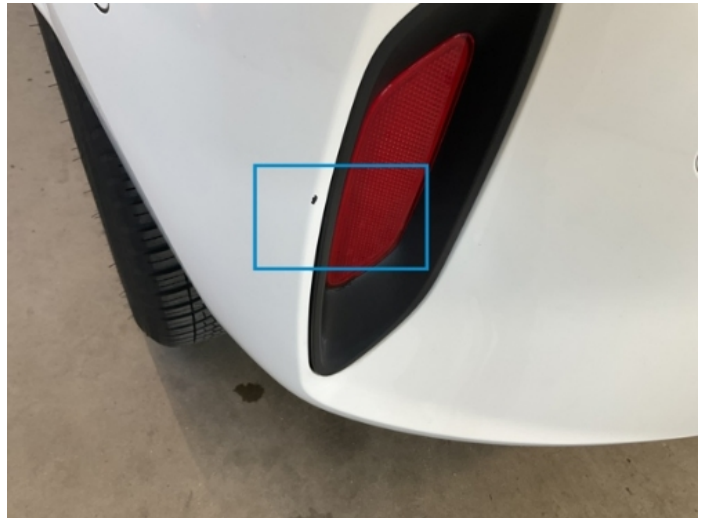
### Vehicle History & Documents

Service Book Available	Incomplete	Next Service Mileage	km
Previous Usage		Imported	No
Manufacturer Warrenty			









Equipment

Tinted Glass	Trip Computer	Airbag Status	Anti-lock braking
Cruise control	Fatiguewarningsystem	Remote adjusting wing mirrors	Reversing Camera
Stability control	Electrically folding wing mirrors	Leather steering wheel	Rain sensitive windscreen wipers
Trafficsignrecognition	USB Socket	Alloys wheels	Bluetooth telephone interface
Digital Radio	Front parking sensors	Remote central locking	Split folding rear seats
Central locking	Laneassist	Radio	Rear parking sensors

Equipment Details

Air Conditioning	Climate Control	Alloy Wheel Size	16
------------------	-----------------	------------------	----

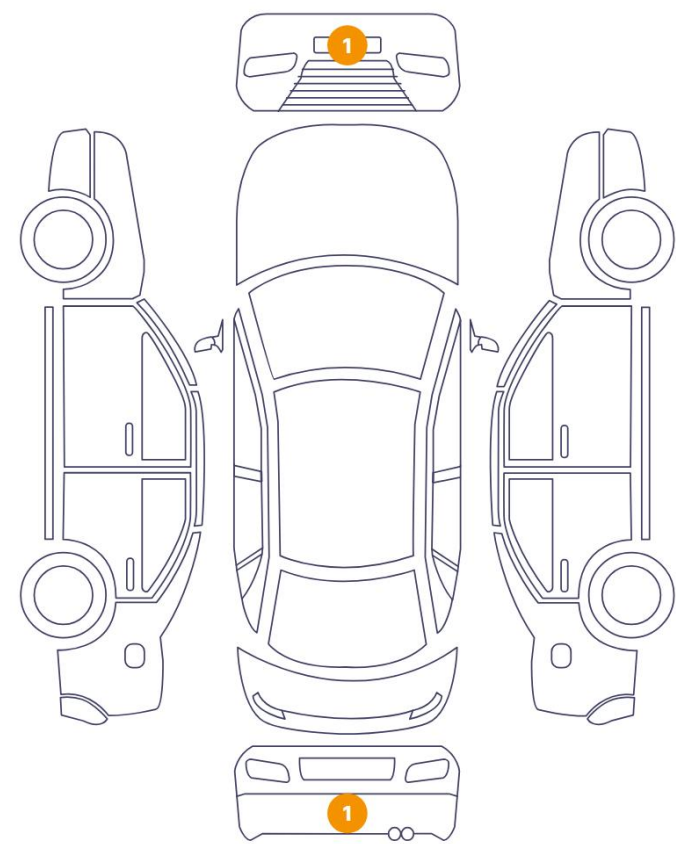
Wheels & Tyres

Right Front Tyre Depth	7	Left Front Tyre Depth	7
Right Rear Tyre Depth	7	Left Rear Tyre Depth	7

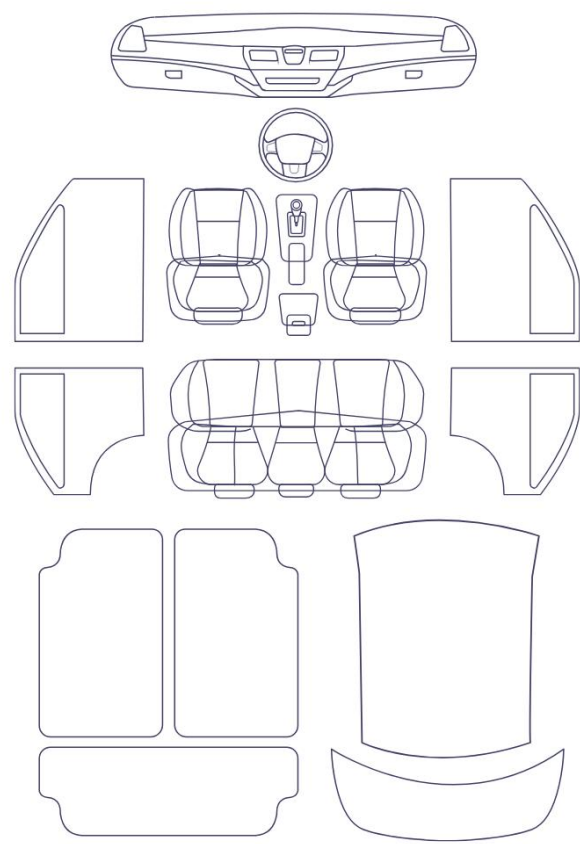


# Cosmetic Damage

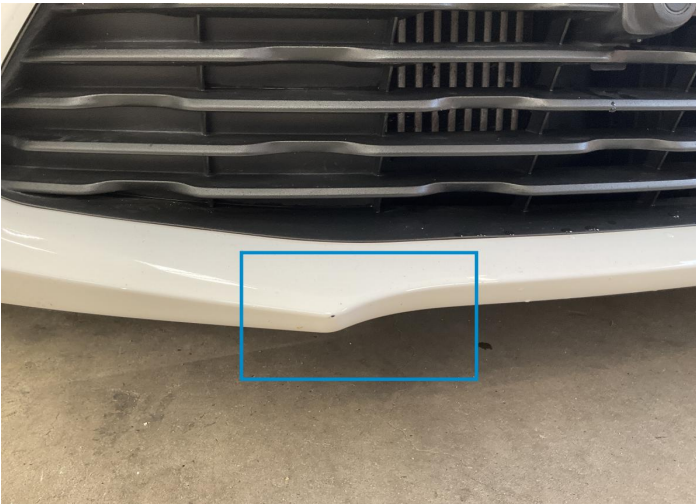
2 Schäden



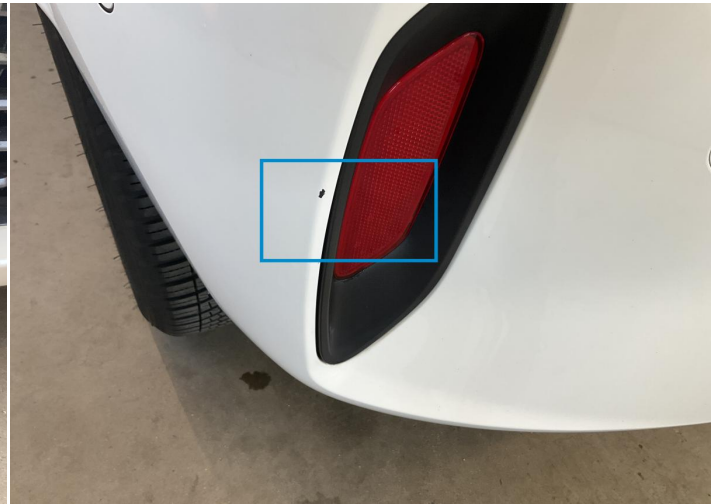
0 Schäden



Component		Damage	Comments
1	Bumper / Front	Paint / Stone Chip	
2	Bumper / Back	Paint / Stone Chip	



1. Bumper / Front  
Paint / Stone Chip -



2. Bumper / Back  
Paint / Stone Chip -

## Mechanical Condition

### Control Lights

Display Defect	✓	Service Light	✓
ABS Warning Light	✓	ESP Fault/Traction Control Malfunction Light	✓
Airbag Warning Light	✓	Oil Pressure Warning Light	✓
Brake Warning Light	✓	Power Steering Warning Light	✓
Alternator / Battery	✓	No Dashboard Lights	✓
Tire Pressure Monitoring System	✓		

### Equipments Test

Central Locking	✓	Main & Spare Keys Functioning	✓
Electric Windows	✓	Audio Equipment	✓
AC / Heating System	✓		

### Engine

Engine Status / EML	✓	Engine Leak Visible	✓
Engine Starts	✓		

### Gearbox

Gear Box	✓
----------	---

### Levels

Brakes Fluid	✓	Coolant Fluid	✓
--------------	---	---------------	---



Test Drive Inspection

Steering Wheel			
Steering   Noise / Anomaly		✓	
			Flywheel Noise ✓
Engine			
Engine Noise		✓	
			The Gears Scratch / Skip / Abnormal Operation ✓
Fume Quantity		✓	
			Power Loss ✓
Clutch			
Clutch Functioning		✓	
			Clutch Pedal Low / High ✓
Clutch Abnormal		✓	
Brake			
Brake System Anomaly		✓	
General			
Test Driven Status		✓	
<div><div>✓</div><div>No troubles detected, good condition or correct tests, according to vehicle age and mileage</div></div> <div><div>⚠</div><div>Damages or malfunction detected that requires repairs by the buyer</div></div> <div><div>NA</div><div>Not applicable</div></div> <div><div>☐</div><div>Not tested</div></div>			

Disclaimer

Please also note the "UserGuide condition report", which shows the scope of the vehicle description.

[User Guide](#)