



Expertise

Protocol number: 41528815  
Order No. / Reference: 25208892  
Inspection date: 15 Sept 2025

Manufacturer: Opel

Model: Vivaro 2.0 D Cargo M Autm. Elegance

VIN: VXEVFEHZ7N7014281



Vehicle details	
Manufacturer / Type / Model / Equipment	
Opel Vivaro 2.0 D Cargo M Autm. Elegance	
Vehicle Identification number	VXEVFEHZ7N7014281
Mileage (Read)	74,961 km
First registration	1 Jul 2022
Number of holders	2
Power / Engine displacement	130 kw / 1,997 ccm
Fuel type / Cylinder	Diesel / 4
Gearbox / Number of gears	Automatic / 8
Type of drive	Front drive
Type of vehicle	Van
Colour / colour code	Jade Weiß
Doors / Seats	4 / 3
Upholstery type	Cloth
Colour of upholstery	Black-Grey



Vehicle details

Maintenance booklet / proof	digital proof / complete	Next maintenance in	42,860 km
Last maintenance on / at	03/2024 at 48,397 km		
Key is / should be	2 / 2	FZG documents	ZB#2 (B) was available (copy), ZB#1 (S) was not available
		Letter No.	GJ652919
Previous damage / Accident	Detectable	Repainting	None detectable
Inspection conditions	sufficient	Lifting equipment / pit	yes
Test drive	Not performed	Engine function test	Performed
Manufacturer key number/ type code number	3003 / AXZ 01161		
Emission standard	EURO6;WLTP;AR;PI/CI;N1 III, N2	Fine dust sticker	
Permitted total weight	2,790 kg	Empty weight	

Tyres

Mounted tyres

#	Tyre size	Type of tyre	Manufacturer	Tread depth
1)	215/65 R16 109T	Summer tyres on Steel	Continental	8mm / 8mm
2)	215/65 R16 109T	Summer tyres on Steel	Continental	8mm / 8mm

Replacement

Typ	Tyre size	Type of tyre	Manufacturer	Tread depth
E	215/65 R16	Summer tyres on Steel	Continental	8 mm

Legend: Tread depth information for tires on the left is in the first place, for tires on the right is in the second place on the axle in the direction of travel

## Equipment

### Standard equipment

- Storage compartments
- Airbag driver and passenger side
- Exterior mirrors, electrically folding, heated and adjustable
- Exterior mirror housing in black
- Hill Start Assist
- On-board computer
- Diesel particulate filter, maintenance-free
- Three-point seat belts on all seats
- Electronic Stability Program (ESP Plus)
- Elimination of head and side airbags
- Speed controller and limiter
- Grab handle in the 1st row of seats, passenger side
- Steering column, length and height adjustable
- Fog light
- Side impact protection
- Side protection strips
- Visual equipment
- Sun visors, driver and passenger
- 12V socket in the cargo area and in the lower glove compartment
- Doors: Rear wing doors, sheet metal with 180° opening angle
- Lashing eyes (6) in the cargo area
- Heat-insulating glazing, tinted
- Ignition key (2), foldable
- ABS including brake assist and adaptive brake light
- Anti-lock braking system (ABS) with cornering brake control and brake assist
- Battery discharge protection
- Floor covering: cargo area floor, painted
- Brake light, third
- tachometer
- Electric parking brake
- Elimination of head-up display
- Electric windows, front
- Transmission: 8-speed automatic
- Glove compartment closed at the top
- Fatigue detection level 1 coffee break
- Radio accessories: Digital radio reception DAB+ (Digital Audio Broadcasting)
- Power steering, speed-dependent
- Seats: Comfort driver's seat and passenger double seat
- 12 volt socket in the center console
- Daytime running light
- Traction control with engine and brake intervention (TC Plus)
- Doors: Sliding door, passenger side
- Electronic immobilizer
- Central locking with radio remote control

### Extra equipment

- Flooring: Floor and side paneling (wooden floor in the cargo area, 9 mm - anti-slip coating and side paneling in the cargo area, 6 mm - full height with aluminum edges)
- Paint finish: Solid paint
- Steering wheel: multifunction leather steering wheel
- Package: INNOVATIONS Package (Driver Assistance Package 2 - Head-Up Display - Parking Pilot, front and rear parking sensors - 180-degree panoramic rear view camera - Blind Spot Warning - Multimedia Navi Pro - DAB+ digital radio reception - OpelConnect)
- Package: Style package (xenon headlights with LED daytime running lights - wheel covers, full-surface - Design package: (exterior mirrors in body color, fog lights, bumpers in body color, .....))
- Upholstery: Fabric / leatherette with dashboard underside in black
- Wheels: Steel wheels 7 J x 16 with hubcap, full-surface (tires 215/65 R 16 C 106T)
- Webasto auxiliary heater with remote control
- Partition wall: closed with window (FlexCargo function)
- Spare wheel
- Windows: Side windows in the 2nd row, fixed
- Rear hatch, glazed (with rear window wiper and rear window heating)
- Package: Design package (front and rear bumpers in body color - exterior door handles in body color - exterior mirror housings in black - exterior mirrors, electrically adjustable, heated, and folding - side protection strips in body color - fog lights - LED daytime running lights)
- Package: Comfort Premium Package (180-degree panoramic rearview camera - electrically folding exterior mirrors - Keyless Open & Start - fog lights - parking pilot, front and rear parking sensors - blind spot warning - dual-zone automatic climate control)
- Tire pressure monitoring system
- Wheels: Spare wheel, steel
- Seat heating for driver and front passenger (in conjunction with passenger double seat, the middle seat is not heated - side and head airbags, 1st row of seats)
- Partition wall: closed with window, insulated (FlexCargo function)



## Brief expert findings

Documents submitted	At the time of the inspection, the registration certificate Part 2 (letter) was available, but the registration certificate Part 1 (certificate) was not. (Copy)
VIN comparison	The vehicle identification number (VIN) was read from the vehicle and its conformity with the submitted documents was verified during the inspection by the undersigned.
Inspection	The inspection conditions were sufficient for the assessment of the vehicle. Lifting equipment and a pit were available for examining the vehicle.
Test drive	No test drive/maneuvering was carried out during the inspection of the vehicle.
Engine function test	An engine test run was performed.

## Value reducing factors

No.	Component group	Description
1	Wheel / tyres	Wheel cover set - complete (2 fehlen) - Incomplete - Replace
2	Rear bumper	Rear bumper - Scratched - Paint
3	Seat - front	Seat cover - left side (mit Sitzpolster) - Burn hole (cigarettes) - Replace

## Wear and tear

No.	Component group	Description
1	Front bumper	Front bumper - Scratch(es) - No deduction
2	Door - front left side	Door edge - Scratch(es) - No deduction
3	Door - front left side	Door - Scratch(es) - No deduction

The vehicle shows signs of wear commensurate with its age and use.

## Previous damages

No.	Previous damage	Extent of damage (Net)
1	Front, Side right, Provided by user / customer, from 16 Mar 2023	5.037,95 €

## Accident damages

No.	Accident
1	Side - left

## Order/Scope of order

The order was placed to prepare a sales report for the vehicle described. This includes the following:

- Description of core relevant information about the vehicle
- Documentation of equipment features  
(Delivery by third-party service providers)
- Documentation of damage, defects, missing parts
- Documentation of previous damage, unrepaired previous damage, repainting
- a brief visual or functional inspection of the equipment details if possible.  
(Functional tests of driver assistance systems are not included in the scope of services!)
- a photo documentation of the vehicle



## Basis for the order

This product is based on the guidelines for vehicle returns and valuations of light commercial vehicles from Alphabet Fuhrparkmanagement GmbH. The expert makes the explicit findings in each individual case objectively within the framework of the specified standards based on his or her own expertise.

The vehicle inspection takes place in a disassembled state.

Damage or defects that can only be detected during disassembly/diagnosis work or through advanced knowledge remain within the scope of the prognosis risk. An extended risk exists for concealed defects caused by fraudulent deception and not identifiable by the expert.

Damage or defects resulting from normal use or wear and tear of the vehicle will be accepted according to the applicable standard.

There was no explicit identification or monetary consideration of the expected features within the product.

Features which in their nature and severity slightly exceed normal use but do not constitute unacceptable damage will be documented and identified under signs of use if necessary.

Damage or defects which, according to the underlying standard, can no longer be attributed to normal use or wear and tear are listed in the product under "Depreciating Factors".

Depending on the product specification, a monetary ID can be provided. If this takes place, the costs can be 100% d or pro rata depending on the vehicle's age and mileage.

## Previous damages

Non-repaired previous damages were found at the vehicle. The necessary repair costs are listed in the expert report or if necessary, are listed in detail in a separately enclosed repair cost calculation.





Figure 1: Diagonal front (left)



Figure 2: Diagonal front (right)



Figure 3: Diagonal rear (left)



Figure 4: Diagonal rear (right)



Figure 5: Interior - front



Figure 6: Interior - rear





Figure 7: Instrument cluster



Figure 8: Instrument panel



Figure 9: Interior 360° view



Figure 10: Cargo area



Figure 11: VIN



Figure 12: Mounted tyres





Figure 13: Documents



Figure 14: Documents

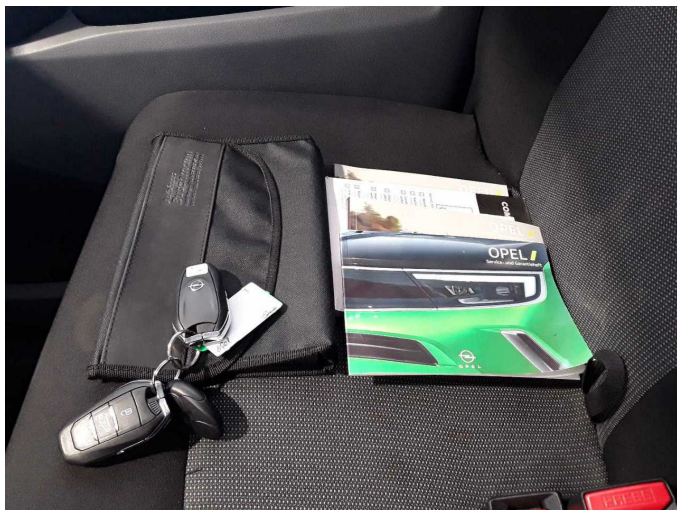


Figure 15: Documents

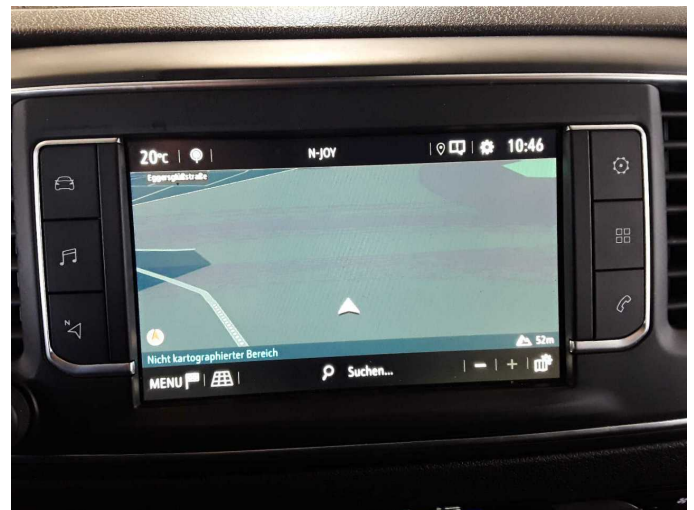


Figure 16: Navigation

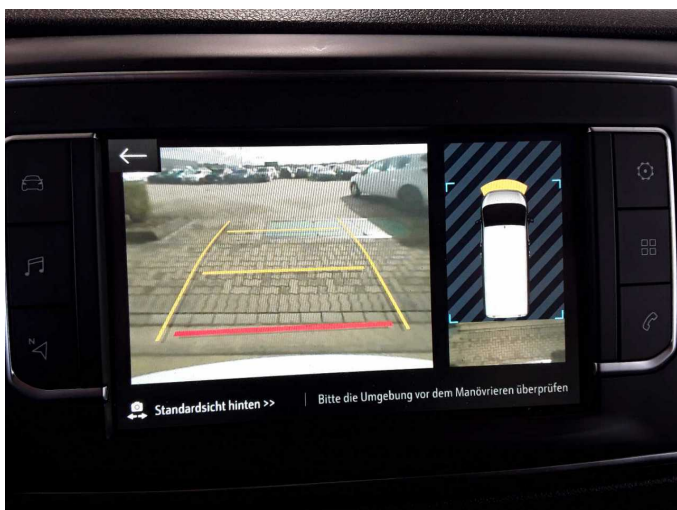


Figure 17: Misc.



Figure 18: Misc.





Figure 19: Misc.



Figure 20: Misc.



Figure 21: Misc.



Damage 1: Wheel / tyres: Wheel cover set - complete (2 fehlen) - Incomplete - Replace



Damage 2: Rear bumper: Rear bumper - Scratched - Paint



Damage 2: Rear bumper: Rear bumper - Scratched - Paint



**Damage 2:** Rear bumper: Rear bumper - Scratched - Paint



**Damage 2:** Rear bumper: Rear bumper - Scratched - Paint



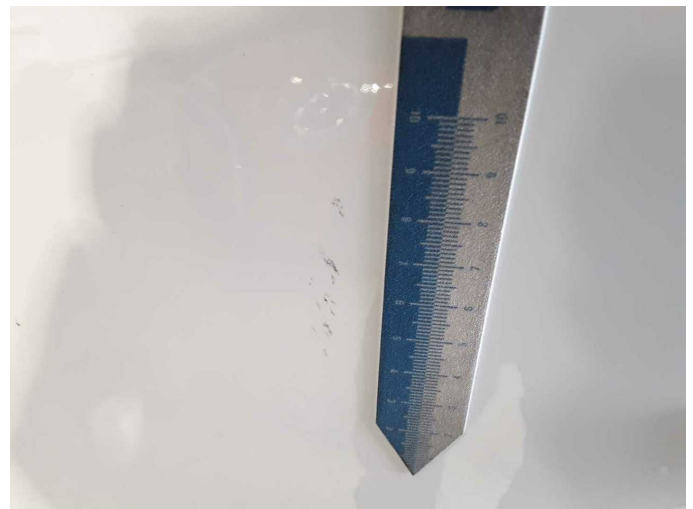
**Damage 3:** Seat - front: Seat cover - left side (mit Sitzpolster) - Burn hole (cigarettes) - Replace



**Damage 3:** Seat - front: Seat cover - left side (mit Sitzpolster) - Burn hole (cigarettes) - Replace



**Wear and tear 3:** Door - front left side: Door - Scratch(es) - No deduction



**Wear and tear 3:** Door - front left side: Door - Scratch(es) - No deduction





**Accident 1: Side - left**



**Accident 1: Side - left**



**Accident 1: Side - left**



**Accident 1: Side - left**



**Accident 1: Side - left**



**Accident 1: Side - left**





# Wartungshistorie

(gemäß Auftraggeber Informationen)

Fahrgestellnummer: VXEVEHZ7N7014281

Hersteller / Modell: OPEL OPEL Vivaro 2.0 D Cargo M Autm. Elegance

Datum	KM-Stand	Beschreibung
23.07.2025	70.030	AU; Bremse Sonstiges; Bremsklötze vorne; Bremsscheiben vorne
13.03.2024	48.397	Bremsflüssigkeit; Bremsflüssigkeit ern; Kraftstofffilter ern; Luftfiltereinsatz ern; Motoröl b. Wartung; Ölfilter ern; Regelwartungsdienst; Wartung Sonstiges