



Expertise

Protocol number: 41764144
Order number / reference: 25236963
Inspection date: 30 Sept 2025

Manufacturer: Opel

Model: Vivaro 2.0 D Cargo M Autm. Elegance

VIN: VXEVFEHZ7N7014054



Vehicle details

Manufacturer / Type / Model / Equipment

Opel Vivaro 2.0 D Cargo M Autm. Elegance

Vehicle Identification number VXEVFEHZ7N7014054

Mileage (Read) 164,975 km

First registration 1 Jul 2022

Number of holders 2

Power / Engine displacement 130 kw / 1,997 ccm

Fuel type / Cylinder Diesel / 4

Gearbox / Number of gears Automatic / 8

Type of drive Front drive

Type of vehicle Van

Colour / colour code Jade Weiß

Doors / Seats 4 / 3

Upholstery type Cloth

Colour of upholstery Black-Grey



Vehicle details

Maintenance booklet / proof	digital proof / complete	Next maintenance in	30,740 km
Last maintenance on / at	05/2025 at 145,732 km		
Key is / should be	2 / 2	FZG documents	ZB#2 (B) was available (copy), ZB#1 (S) was not available
		Letter No.	GJ652918
Previous damage / Accident	None detectable	Repainting	None detectable
Inspection conditions	sufficient	Lifting equipment / pit	yes
Test drive	Not performed	Engine function test	Performed
Manufacturer key number/ type code number	3003 / AXZ 01161		
Emission standard	EURO6;WLTP;AR;PI/CI;N1 III, N2	Fine dust sticker	
Permitted total weight	2,790 kg	Empty weight	

Tyres

Mounted tyres

#	Tyre size	Type of tyre	Manufacturer	Tread depth
1)	215/65 R16 109T	Summer tyres on Steel rim with wheel cover	Pirelli	9mm / 9mm
2)	215/65 R16 109T	Summer tyres on Steel rim with wheel cover	Pirelli	9mm / 9mm

Additional tyres

#	Tyre size	Type of tyre	Manufacturer	Tread depth
1)	215/65 R16 109T	Winter tyres on Steel	Goodyear	5mm / 5mm
2)	215/65 R16 109T	Winter tyres on Steel	Bridgestone	6mm / 6mm

Replacement

Typ	Tyre size	Type of tyre	Manufacturer	Tread depth
E	215/65 R16	Summer tyres on Steel	Michelin	9 mm

Legend: Tread depth information for tires on the left is in the first place, for tires on the right is in the second place on the axle in the direction of travel



Equipment

Standard equipment

- Storage compartments
- Airbag driver and passenger side
- Exterior mirrors, electrically folding, heated and adjustable
- Exterior mirror housing in black
- Hill Start Assist
- Brake light, third
- tachometer
- Electric parking brake
- Electric windows, front
- Transmission: 8-speed automatic
- Glove compartment closed at the top
- Steering column, length and height adjustable
- Fatigue detection level 1 coffee break
- Package: Driver Assistance Package 1
- Radio: Multimedia radio with 7" touchscreen color display
- Side impact protection
- Side protection strips
- Visual equipment
- Sun visors, driver and passenger
- 12V socket in the cargo area and in the lower glove compartment
- Doors: Rear wing doors, sheet metal with 180° opening angle
- Lashing eyes (6) in the cargo area
- Heat-insulating glazing, tinted
- Ignition key (2), foldable
- ABS including brake assist and adaptive brake light
- Anti-lock braking system (ABS) with cornering brake control and brake assist
- Battery discharge protection
- On-board computer
- Diesel particulate filter, maintenance-free
- Three-point seat belts on all seats
- Electronic Stability Program (ESP Plus)
- Speed controller and limiter
- Grab handle in the 1st row of seats, passenger side
- Steering wheel: Comfort steering wheel (PU), flattened at the bottom
- Fog light
- Parking pilot, front and rear parking aid
- Radio accessories: Digital radio reception DAB+ (Digital Audio Broadcasting)
- Power steering, speed-dependent
- Seats: Comfort driver's seat and passenger double seat
- 12 volt socket in the center console
- Daytime running light
- Traction control with engine and brake intervention (TC Plus)
- Doors: Sliding door, passenger side
- Electronic immobilizer
- Central locking with radio remote control

Extra equipment

- Flooring: Floor and side paneling (wooden floor in the cargo area, 9 mm - anti-slip coating and side paneling in the cargo area, 6 mm - full height with aluminum edges)
- Automatic climate control: Two-zone automatic climate control, front (with particle and odor filter - manual recirculation - automatic air distribution - sun position sensor - activated carbon filter)
- Package: INNOVATIONS Package (Driver Assistance Package 2 - Head-Up Display - Parking Pilot, front and rear parking sensors - 180-degree panoramic rear view camera - Blind Spot Warning - Multimedia Navi Pro - DAB+ digital radio reception - OpelConnect)
- Package: Style package (xenon headlights with LED daytime running lights - wheel covers, full-surface - Design package: (exterior mirrors in body color, fog lights, bumpers in body color,))
- Tire pressure monitoring system
- Wheels: Spare wheel, steel
- Keyless locking and starting system "Keyless Open & Start"
- Webasto auxiliary heater with remote control
- Partition wall: closed with window (FlexCargo function)
- Partition wall: closed with window, insulated (FlexCargo function)
- Windows: Side windows in the 2nd row, fixed
- Rear hatch, glazed (with rear window wiper and rear window heating)
- Paint finish: Solid paint
- Steering wheel: multifunction leather steering wheel
- Package: Design package (front and rear bumpers in body color - exterior door handles in body color - exterior mirror housings in black - exterior mirrors, electrically adjustable, heated, and folding - side protection strips in body color - fog lights - LED daytime running lights)
- Package: Comfort Premium Package (180-degree panoramic rearview camera - electrically folding exterior mirrors - Keyless Open & Start - fog lights - parking pilot, front and rear parking sensors - blind spot warning - dual-zone automatic climate control)
- Upholstery: Fabric / leatherette with dashboard underside in black
- Wheels: Steel wheels 7 J x 16 with hubcap, full-surface (tires 215/65 R 16 C 106T)
- Seat heating for driver and front passenger (in conjunction with a passenger double seat, the middle seat is not heated - side and head airbags, 1st row of seats)



Brief expert findings

Documents submitted	At the time of the inspection, the registration certificate Part 2 (letter) was available, but the registration certificate Part 1 (certificate) was not. (Copy)
VIN comparison	The vehicle identification number (VIN) was read from the vehicle and its conformity with the submitted documents was verified during the inspection by the undersigned.
Inspection	The inspection conditions were sufficient for the assessment of the vehicle. Lifting equipment and a pit were available for examining the vehicle.
Test drive	No test drive/maneuvering was carried out during the inspection of the vehicle.
Engine function test	An engine test run was performed.

Value reducing factors

No.	Component group	Description
1	Side panel - rear left side	Brightware - Scratched - Paint
2	Side panel - rear right side	Side panel - dent(s) - Repair and paint
3	Rear bumper	Rear bumper - Deformed - Replace

Wear and tear

No.	Component group	Description
1	Body	Body (Flugrost) - Corrosion - No deduction
2	Vehicle glazing	Windscreen - Stone chips - No deduction
3	Front bumper	Front bumper - Stone chips - No deduction

The vehicle shows signs of wear commensurate with its age and use.

Order/Scope of order

The order was placed to prepare a sales report for the vehicle described. This includes the following:

- Description of core relevant information about the vehicle
- Documentation of equipment features
(*Delivery by third-party service providers*)
- Documentation of damage, defects, missing parts
- Documentation of previous damage, unrepaired previous damage, repainting
- a brief visual or functional inspection of the equipment details if possible.
(*Functional tests of driver assistance systems are not included in the scope of services!*)
- a photo documentation of the vehicle



Basis for the order

This product is based on the guidelines for vehicle returns and valuations of light commercial vehicles from Alphabet Fuhrparkmanagement GmbH. The expert makes the explicit findings in each individual case objectively within the framework of the specified standards based on his or her own expertise.

The vehicle inspection takes place in a disassembled state.

Damage or defects that can only be detected during disassembly/diagnosis work or through advanced knowledge remain within the scope of the prognosis risk. An extended risk exists for concealed defects caused by fraudulent deception and not identifiable by the expert.

Damage or defects resulting from normal use or wear and tear of the vehicle will be accepted according to the applicable standard.

There was no explicit identification or monetary consideration of the expected features within the product.

Features which in their nature and severity slightly exceed normal use but do not constitute unacceptable damage will be documented and identified under signs of use if necessary.

Damage or defects that can no longer be attributed to normal use or wear and tear according to the underlying standard are listed in the product under value-reducing factors.

Depending on the product specification, a monetary ID can be provided. If this takes place, the costs can be 100% d or pro rata depending on the vehicle's age and mileage.

Previous damages

Apparently, no repaired previous damage could be found on the vehicle.

Comments

- Winterradsatz ist kein Bestandteil des Auslieferungsumfangs



Figure 1: Diagonal front (left)



Figure 2: Diagonal front (right)



Figure 3: Diagonal rear (left)



Figure 4: Diagonal rear (right)



Figure 5: Interior - front



Figure 6: Interior - rear



Figure 7: Instrument cluster



Figure 8: Instrument panel



Figure 9: Interior 360° view



Figure 10: Cargo area



Figure 11: VIN



Figure 12: Mounted tyres



Figure 13: Documents



Figure 14: Documents



Figure 15: Documents



Figure 16: Additional tyres

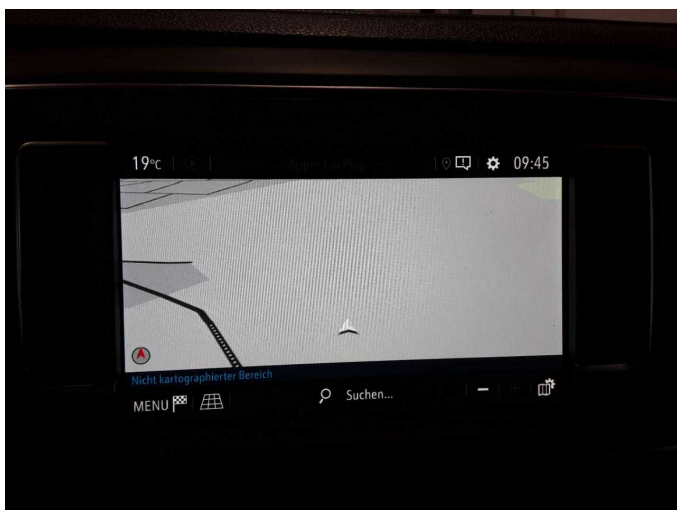


Figure 17: Navigation

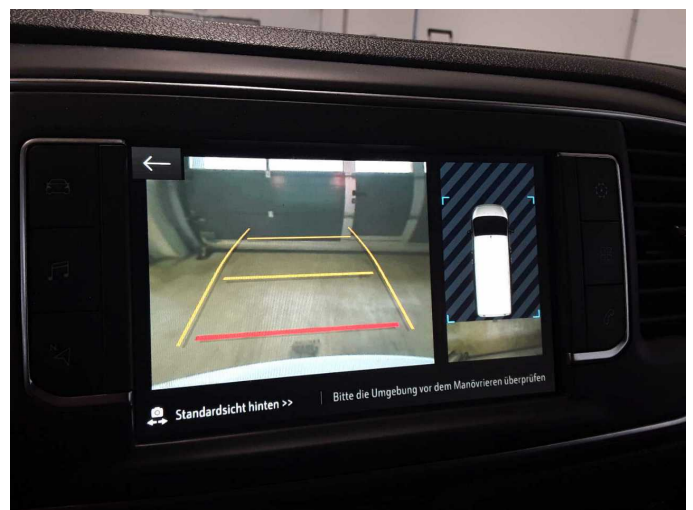


Figure 18: Misc.



Figure 19: Misc.



Figure 20: Misc.



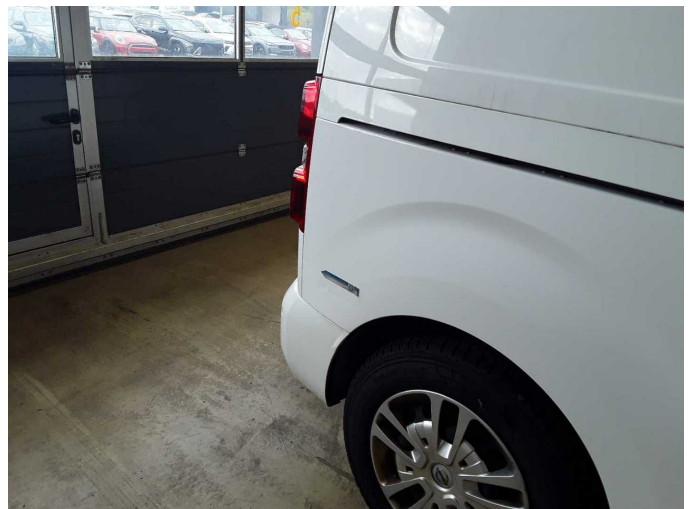
Figure 21: Misc.



Damage 1: Side panel - rear left side: Brightware - Scratched - Paint



Damage 1: Side panel - rear left side: Brightware - Scratched - Paint



Damage 2: Side panel - rear right side: Side panel - dent(s) - Repair and paint



Damage 2: Side panel - rear right side: Side panel - dent(s) - Repair and paint



Damage 3: Rear bumper: Rear bumper - Deformed - Replace



Damage 3: Rear bumper: Rear bumper - Deformed - Replace



Damage 3: Rear bumper: Rear bumper - Deformed - Replace



Damage 3: Rear bumper: Rear bumper - Deformed - Replace



Wartungshistorie

(gemäß Auftraggeber Informationen)

Fahrgestellnummer: VXEVFH7N7014054
Hersteller / Modell: OPEL OPEL Vivaro 2.0 D Cargo M Autm. Elegance

Datum	KM-Stand	Beschreibung
07.05.2025	145.732	Bremse Sonstiges; Bremsklötze hinten; Bremsscheiben + Klötze h; Bremsscheiben hinten; Dieselpartikelfilter ern; Motoröl b. Wartung; Ölfilter ern; Regelwartungsdienst; Reparatur Sonstiges; Systemtest/Eigendiagnose; Wartung Sonstiges; Zahnriemen/Steuerkett ern
08.10.2024	113.160	Bremse Sonstiges; Bremsklötze vorne; Bremsscheiben + Klötze v; Bremsscheiben vorne
27.09.2024	112.358	Bremsflüssigkeit; Bremsflüssigkeit ern; Keilrippenriemen; Kraftstofffilter ern; Luftfiltereinsatz ern; Motoröl b. Wartung; Ölfilter ern; Regelwartungsdienst; Systemtest/Eigendiagnose; Wartung Sonstiges
22.01.2024	76.064	Motoröl b. Wartung; Ölfilter ern; Ölwechsel; Wartung Sonstiges
06.03.2023	40.323	Kraftstofffilter ern; Luftfiltereinsatz ern; Luftfiltereinsatz ern; Motoröl b. Wartung; Ölfilter ern; Regelwartungsdienst; Wartung Sonstiges