



Expertise

Protocol number: 40128559
Order No. / Reference: 24753283
Inspection date: 11 Jun 2025

Manufacturer: Opel

Model: Zafira Life 2.0 D M Aut. Elegance

VIN: VXEEVHHZ8MZ001417



Vehicle details	
Manufacturer / Type / Model / Equipment	
Opel Zafira Life 2.0 D M Aut. Elegance	
Vehicle Identification number	VXEEVHHZ8MZ001417
Mileage (Read)	114,122 km
First registration	23 Oct 2020
Number of holders	1
Power / Engine displacement	130 kw / 1,997 ccm
Fuel type / Cylinder	Diesel / 4
Gearbox / Number of gears	Automatic / 8
Type of drive	Front drive
Type of vehicle	Van
Colour / colour code	Diamant Schwarz
Doors / Seats	5 / 7
Upholstery type	Leather
Colour of upholstery	Black
Vehicle with smoke odor	no



Vehicle details

Maintenance booklet / proof	digital proof / complete	Next maintenance in	40,680 km
Last maintenance on / at	12/2024 at 104,818 km		
Key is / should be	1 / 2	FZG documents	ZB#2 (B) was available (copy), ZB#1 (S) was not available
		Letter No.	FT990200
Previous damage / Accident	Detectable	Repainting	None detectable
Inspection conditions	Sufficient	Lifting equipment / pit	yes
Test drive	Not performed	Engine function test	Performed
Manufacturer key number/ type code number	3003 / BBA 00156		
Emission standard	EURO6;WLTP;AM;PI/CI; M, N1 I	Fine dust sticker	
Permitted total weight	3,100 kg	Empty weight	

Tyres

Mounted tyres

#	Tyre size	Type of tyre	Manufacturer	Tread depth
1)	225/55 R17 101W	Summer tyres on Light alloy	Michelin	4mm / 4mm
2)	225/55 R17 101W	Summer tyres on Light alloy	Michelin	7mm / 7mm

Replacement

Typ	Tyre size	Type of tyre	Manufacturer	Tread depth
	Tirefit	Expiration date 11/2024		

Legend: Tread depth information for tires on the left is in the first place, for tires on the right is in the second place on the axle in the direction of travel

Equipment

Standard equipment

- Low beam automatically
- Airbag for driver and passenger side
- Airbag: Curtain airbags, in the 2nd and 3rd row of seats
- Automatic activation of the hazard warning lights
- Exterior mirror housings in body color
- On-board computer
- diesel particulate filter
- Electronic Stabilization Program (ESP - Plus)
- Electric front windows
- Floor mats in all rows of seats
- Luggage compartment cover
- Head-Up Display
- Interior lighting
- Child safety lock, electric
- Automatic climate control: Two-zone automatic climate control
- Steering column height/length adjustable
- Navigation system: Multimedia Navi Pro with 7" touchscreen color display, voice control for audio, telephone, navigation
- Package: Driver Assistance Package 2
- Panoramic roof with 2 separate windows, manually coverable
- Radio: Digital radio reception DAB+
- Rain sensor
- Tire pressure warning
- Keyless locking and starting system Keyless Open & Start
- Power steering
- Seat heating for driver and front passenger
- sun visors driver and passenger side
- socket, 12V
- Traction Control (TC) Plus
- Door: Electric sliding door, driver and passenger side with sensor control
- Immobiliser
- Central locking with radio remote control
- Storage compartments
- Airbag: Head airbags, driver and front passenger
- Anti-lock braking system (ABS)
- Exterior mirrors, electrically adjustable, heated and folding
- Hill Start Assist
- Roof lining with 3 reading lights and ambient light
- tachometer
- Window: Window, driver's side in the 2nd row of seats, fixed
- Floor mats in the 2nd and 3rd row of seats
- Transmission: 8-speed automatic transmission
- Rear hatch glazed, with rear window wiper and heater
- Interior rearview mirror, automatically dimming
- Air conditioning: additional air conditioning, rear
- Headrests (5)
- Steering wheel: multifunction leather steering wheel, flattened bottom
- Fog lights with static cornering light
- Opel Connect with telematics services
- Package: Driver Assistance Package 1
- 180° panoramic rear view camera
- Parking pilot, front and rear
- Quickheat rapid heating system
- Radio accessories: sound system
- Tire repair kit
- Wheels: Light alloy wheels in BiColor, 7J x 17
- side protection strips in vehicle color
- Seat belt: Three-point seat belts on all seats
- Solar Protect thermal insulation glazing
- sun blinds in the 2nd row of seats
- Socket: 220/230V, in the second row of seats under the passenger seat
- Exterior door handles, in chrome
- lashing eyes 6 in the cargo area
- Xenon headlights with LED daytime running lights
- Ignition key (2)

Extra equipment

- Anti-theft alarm system (central locking with radio remote control - interior monitoring - deadlock function for central locking)
- Door: Electric sliding door, driver-passenger YA2,DFO
- Emergency hammer with belt cutter (1637770180)
- High-visibility vest for children, 7-12 years (1612619780)
- Package: Driver Assistance Package 2 B26
- Package: Driving Assistance Package 1 E9A
- Package: Park & Go Premium Package XAGS
- Paint finish: metallic
- Radio: Digital radio reception DAB+ U2Q
- Safety package with small warning triangle (16626979)
- Folding table on rail system (slidable between 2nd and 3rd row of seats, removable)
- Luggage compartment partition net (vertical behind the last row of seats)
- Package: Black Edition design package (exterior mirror housing in high-gloss black - side protection strip in high-gloss black)



- Webasto auxiliary heater (programmable with remote control)
- Winter complete wheels / alloy wheels 17 inches

- Seats: 7 seats in leather, Claudia Black (Comfort driver's seat: 6-way electrically adjustable, with lumbar support, armrest, massage function and seat heating -Comfort passenger seat: 4-way electrically adjustable, with lumbar support, armrest, massage function and seat heating -Two individual seats on rails in the 2nd row of seats with armrests, swivel, foldable and removable and ISOFIX provision - Bench in the 3rd row of seats, foldable in a ratio of 1/3 to 2/3 and ISOFIX provision -Rail system for 2nd and 3rd row of seats - Headrests, height adjustable)

Brief expert findings

Documents submitted	At the time of the inspection, the registration certificate Part 2 (letter) was available, but the registration certificate Part 1 (certificate) was not. (Copy)
VIN comparison	The vehicle identification number (VIN) was read and the undersigned verified that it matched the documents submitted during the inspection.
Inspection	The inspection conditions were sufficient for the assessment of the vehicle. Lifting equipment and a pit were available for examining the vehicle.
Test drive	No test drive/maneuvering was carried out during the inspection of the vehicle.
Engine function test	An engine test run was performed.

Value reducing factors

No.	Component group	Description
1	Roof	Stub aerial - Damage caused by marten / rodent - Replace
2	Equipment	Tirefit filler - Expired - Replace
3	Front bumper	Front bumper - Scratch(es) - Smart repair
4	Sliding door, right	Brightware - Scratch(es) - Smart repair
5	Sliding door, right	Switch unit (Beide öffnen nicht automatisch) - Defective - Perform diagnosis
6	Engine	Engine cover - top / cover - Damage caused by marten / rodent - Replace
7	Wheel / tyres	Alloy rim - rear left side - Scratch(es) - Loss in value
8	Side panel - rear right side	Side panel - Scratched - Paint
9	Fuel system	Fuel system (Reparatur nach Kostenvoranschlag) - Damaged - Replace

Wear and tear

No.	Component group	Description
1	Bonnet	Bonnet - Stone chips - No deduction
2	Body	Body - Scratch(es) - No deduction
3	Trim / covers	Brightware / decorative strip (Lackbild) - No deduction

The vehicle shows signs of wear commensurate with its age and use.

Missing parts

Description

Equipment - Vehicle key

2nd wheel set - 2nd wheel set



Previous damages

No.	Previous damage	Extent of damage (Net)
1	Side - left, Provided by user / customer, from 20 Feb 2024	1.468,27 €

Order/Scope of order

The order was placed to prepare a sales report for the vehicle described. This includes the following:

- Description of core relevant information about the vehicle
- Documentation of equipment features
(Delivery by third-party service providers)
- Documentation of damage, defects, missing parts
- Documentation of previous damage, unrepaired previous damage, repainting
- a brief visual or functional inspection of the equipment details if possible.
(Functional tests of driver assistance systems are not included in the scope of services!)
- a photo documentation of the vehicle

Basis for the order

This product is based on the Alphabet Fuhrpark GmbH guidelines for vehicle returns and valuations. The expert makes the explicit findings in each individual case objectively within the framework of the specified standards based on his or her own expertise.

The vehicle inspection takes place in a disassembled state.

Damage or defects that can only be detected during disassembly/diagnosis work or through advanced knowledge remain within the scope of the prognosis risk. An extended risk exists for concealed defects caused by fraudulent deception and not identifiable by the expert.

Damage or defects resulting from normal use or wear and tear of the vehicle will be accepted according to the applicable standard.

There was no explicit identification or monetary consideration of the expected features within the product.

Features which in their nature and severity slightly exceed normal use but do not constitute unacceptable damage will be documented and identified under signs of use if necessary.

Damage or defects which, according to the underlying standard, can no longer be attributed to normal use or wear and tear are listed in the product under "Depreciating Factors".

Depending on the product specification, a monetary ID can be provided. If this takes place, the costs can be 100% d or pro rata depending on the vehicle's age and mileage.

Previous damages

According to available information previous damages were repaired at the vehicle. Traces of repairs, which allow conclusions about the area of repair, were not recognizable during the inspection.



Figure 1: Diagonal front (left)



Figure 2: Diagonal front (right)



Figure 3: Diagonal rear (left)



Figure 4: Diagonal rear (right)



Figure 5: Interior - front



Figure 6: Interior - rear



Figure 7: Instrument cluster



Figure 8: Instrument panel



Figure 9: interior 360° view



Figure 10: Cargo area



Figure 11: VIN



Figure 12: Mounted tyres

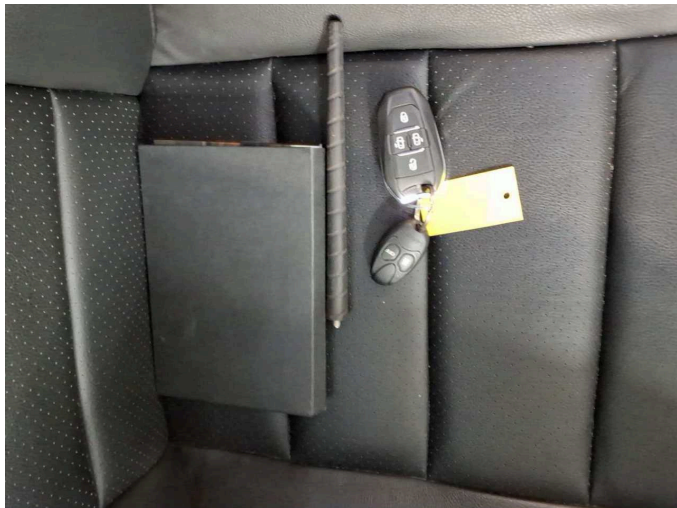


Figure 13: Documents



Figure 14: Documents



Figure 15: Documents

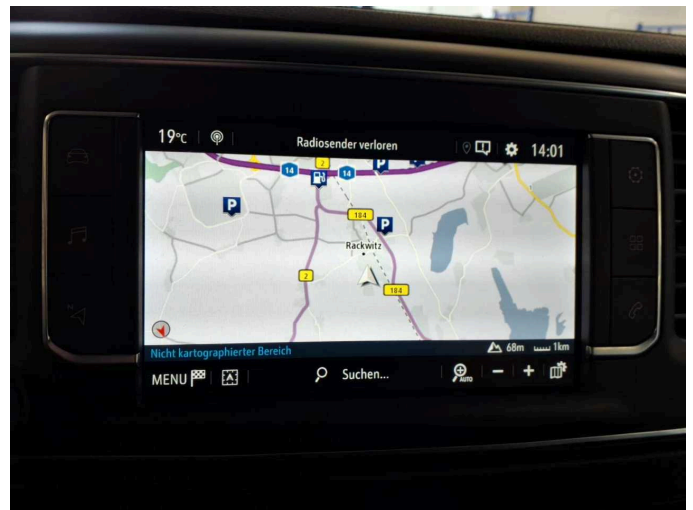


Figure 16: Navigation

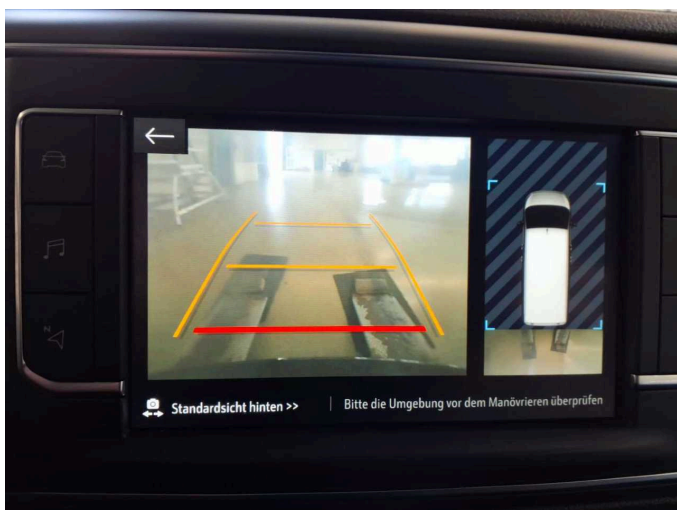


Figure 17: Misc.



Figure 18: Misc.

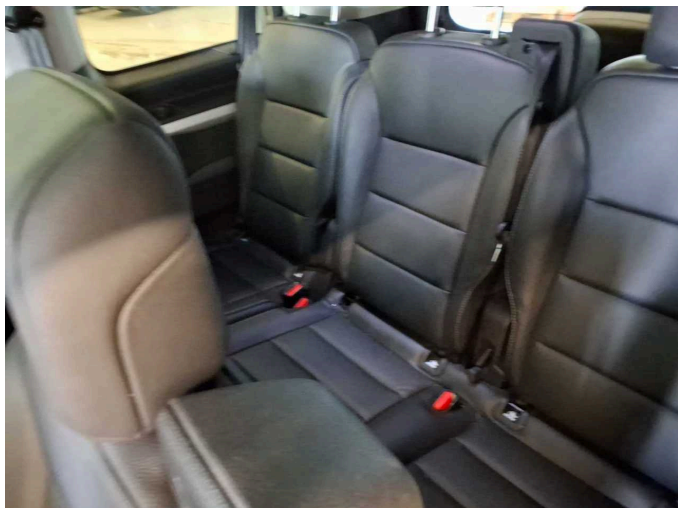


Figure 19: Misc.

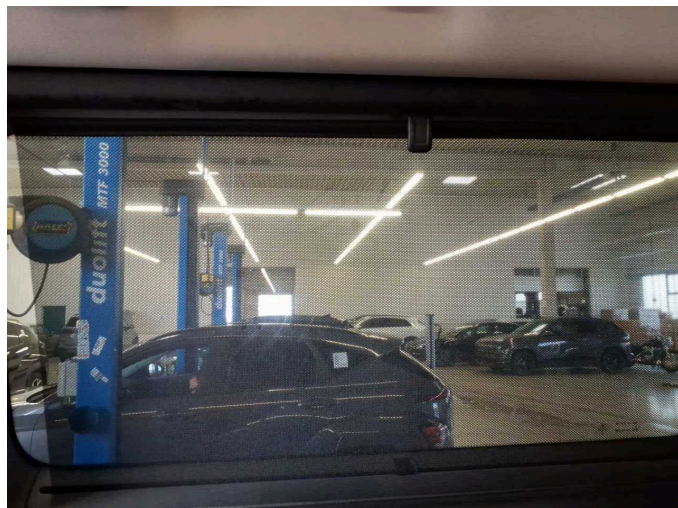


Figure 20: Misc.

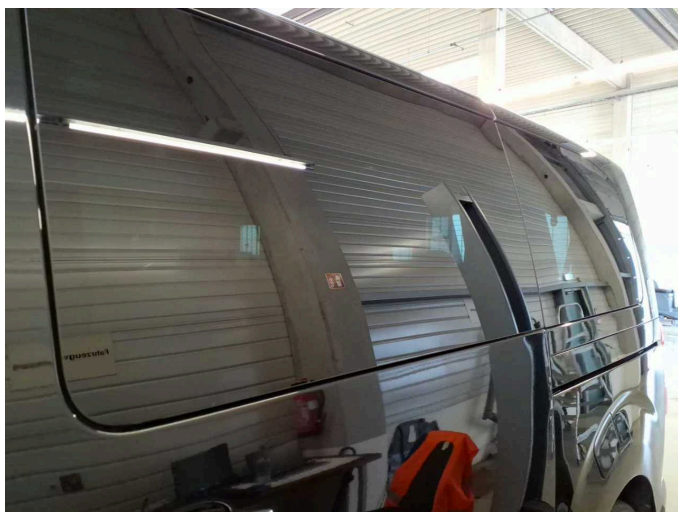


Figure 21: Misc.

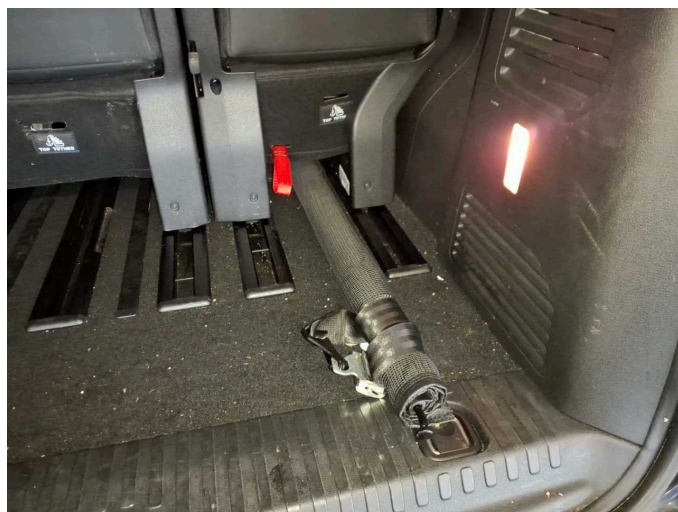


Figure 22: Misc.

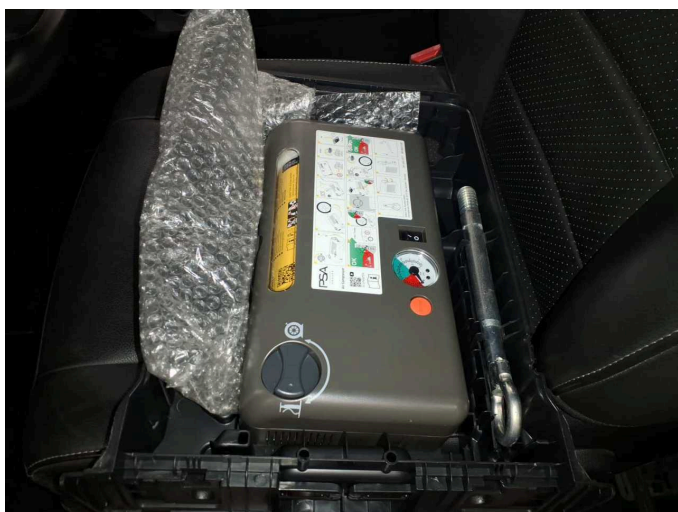


Figure 23: Misc.

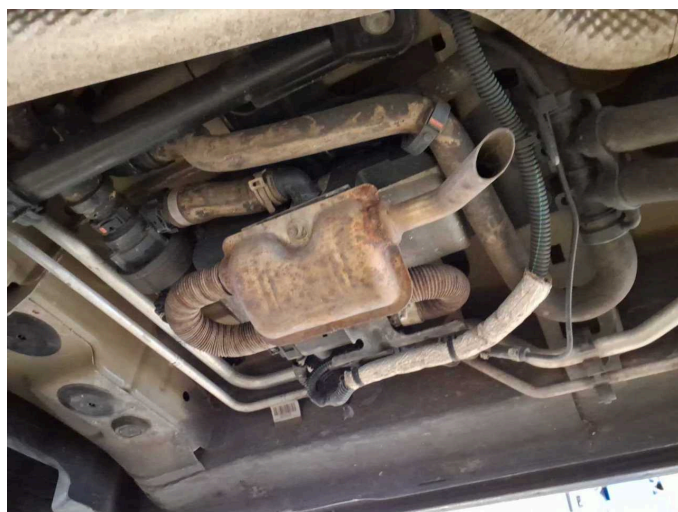


Figure 24: Misc.



Damage 1: Roof: Stub aerial - Damage caused by marten / rodent - Replace



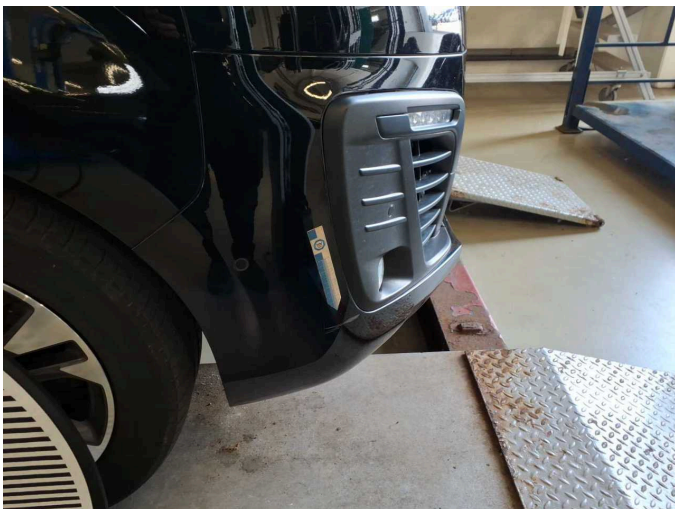
Damage 1: Roof: Stub aerial - Damage caused by marten / rodent - Replace



Damage 1: Roof: Stub aerial - Damage caused by marten / rodent - Replace



Damage 2: Equipment: Tirefit filler - Expired - Replace



Damage 3: Front bumper: Front bumper - Scratch(es) - Smart repair



Damage 3: Front bumper: Front bumper - Scratch(es) - Smart repair



Damage 4: Sliding door, right: Brightware - Scratch(es) - Smart repair



Damage 4: Sliding door, right: Brightware - Scratch(es) - Smart repair



Damage 4: Sliding door, right: Brightware - Scratch(es) - Smart repair



Damage 6: Engine: Engine cover - top / cover - Damage caused by marten / rodent - Replace



Damage 6: Engine: Engine cover - top / cover - Damage caused by marten / rodent - Replace



Damage 7: Wheel / tyres: Alloy rim - rear left side - Scratch(es) - Loss in value



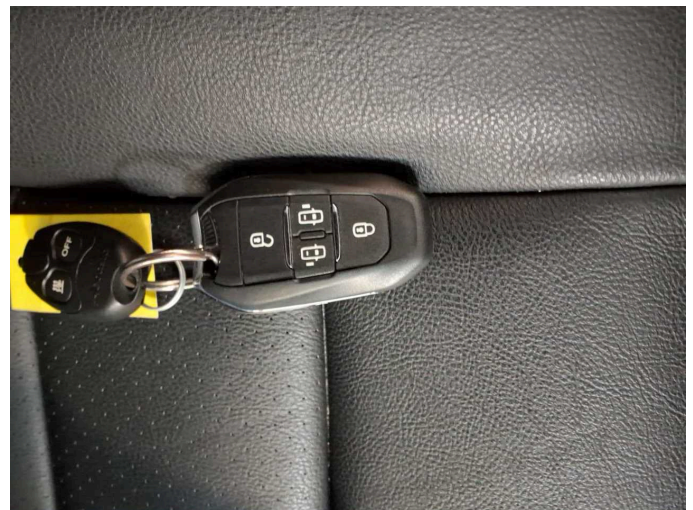
Damage 7: Wheel / tyres: Alloy rim - rear left side - Scratch(es) - Loss in value



Damage 8: Side panel - rear right side: Side panel - Scratched - Paint



Damage 8: Side panel - rear right side: Side panel - Scratched - Paint



Missing part 1: Equipment: Vehicle key - Missing - Replace



Wartungshistorie

(gemäß Auftraggeber Informationen)

Fahrgestellnummer: VXEVEEHZ8MZ001417
Hersteller / Modell: OPEL OPEL Zafira Life 2.0 D M Aut. Innovation

Datum	KM-Stand	Beschreibung
16.12.2024	104.818	Motor ern; Motoröl b. Wartung
06.12.2024	115.974	Bremsflüssigkeit; Bremsflüssigkeit ern
29.10.2024	0	Reparatur Sonstiges; Reparatur Sonstiges
19.08.2024	104.818	Keilrippenriemen; Kraftstofffilter ern; Luftfiltereinsatz ern; Motoröl b. Wartung; Ölfilter ern; Regelwartungsdienst; Systemtest/Eigendiagnose; Wartung Sonstiges
14.12.2022	52.622	Systemtest/Eigendiagnose
06.12.2022	51.608	Bremsflüssigkeit; Bremsflüssigkeit ern; Kraftstofffilter ern; Luftfiltereinsatz ern; Motoröl b. Wartung; Ölfilter ern; Regelwartungsdienst; Wartung Sonstiges
23.06.2022	36.248	Bremsscheiben + Klötze h; Bremsscheiben + Klötze v