



Expertise

Protocol number: 39180077
Order No. / Reference: 24558854
Inspection date: 4 Apr 2025

Manufacturer: Opel	Model: Zafira Life 2.0 D M Aut. Elegance
VIN: VXEEHZ7MZ114863	



Vehicle details	
Manufacturer / Type / Model / Equipment	
Opel Zafira Life 2.0 D M Aut. Elegance	
Vehicle Identification number	VXEEHZ7MZ114863
Mileage (Read)	81,842 km
First registration	9 Mar 2022
Number of holders	1
Next periodical technical inspection	03/2025
(Report not on hand)	
Power / Engine displacement	130 kw / 1,997 ccm
Fuel type / Cylinder	Diesel / 4
Gearbox / Number of gears	Automatic / 8
Type of drive	Front drive
Type of vehicle	Station wagon
Colour / colour code	Diamant Schwarz
Doors / Seats	5 / 8
Upholstery type	Leather
Colour of upholstery	Black
Re/Import	no
driving readiness	Roadworthy



Vehicle details

Maintenance booklet / proof	digital proof / complete	Next maintenance in	47,860 km
Last maintenance on / at	02/2025 at 79,705 km		
Key is / should be	2 / 2	FZG documents	ZB#2 (B) was available (copy), ZB#1 (S) was not available
		Letter No.	GF961352
Previous damage / Accident	None detectable	Repainting	None detectable
Inspection conditions	Sufficient	Lifting equipment / pit	yes
Test drive	Not performed	Engine function test	Performed
driving readiness	Roadworthy		
Manufacturer key number/ type code number	3003 / BBA 00317		
Emission standard	EURO6;WLTP;AP;PI/CI; M, N1 I	Fine dust sticker	
Permitted total weight	3,100 kg	Empty weight	

Tyres

Mounted tyres

#	Tyre size	Type of tyre	Manufacturer	Tread depth
1)	225/55 R17 109T	Winter tyres on Light alloy	Pirelli	6mm / 6mm
2)	225/55 R17 109T	Winter tyres on Light alloy	Pirelli	6mm / 6mm

Additional tyres

#	Tyre size	Type of tyre	Manufacturer	Tread depth
1)	225/55 R17 101V	Summer tyres on Light alloy	Michelin	5mm / 4mm
2)	225/55 R17 101V	Summer tyres on Light alloy	Michelin	5mm / 5mm

Legend: Tread depth indication for left-hand tires in first place, for right-hand tires in second place on the axle in the direction of travel



Equipment

Standard equipment

- low beam automatically
- Airbag for driver and passenger side
- Airbag: Curtain airbags, in the 2nd and 3rd row of seats
- Automatic activation of the hazard warning lights
- Exterior mirror housing in black
- Hill Start Assist
- Brake light, third
- tachometer
- Window: Window, driver's side in the 2nd row of seats, fixed
- Transmission: 8-speed automatic transmission
- Rear hatch glazed, with rear window wiper and heater
- Air conditioning
- LED daytime running lights
- headlight range adjustment, manual
- rear fog lights with reversing lights
- Package: Driver Assistance Package 2 (Semi-adaptive cruise control and limiter - Front collision warning - Instruments, 3, 5th color driver information display - Emergency braking assistant - Solar Reflect windshield)
- Radio: Digital radio reception DAB+
- Rain sensor
- Tire repair kit
- tire pressure warning
- Wheels: Light alloy wheels in BiColor, 7J x 17 (tires 225/55 R17 101)
- Sliding door strip with cover, in body color
- side impact protection
- side protection strips in vehicle color
- Power steering
- Seat belts: Three-point seat belts on all seats
- Seats: 8 seats in fabric, Harlequin Black
- Solar Protect thermal insulation glazing
- socket, 12V
- Door: Sliding door, driver and passenger side
- Immobiliser
- ignition keys (2), both foldable
- Storage compartments
- Airbag: Head airbags, driver and front passenger
- Anti-lock braking system (ABS)
- Exterior mirrors, electrically adjustable, heated and foldable
- On-board computer
- diesel particulate filter
- Electronic Stabilization Program (ESP - Plus)
- electric front windows
- Luggage compartment cover
- handbrake, manual
- child safety lock, mechanical
- Air conditioning: additional air conditioning, rear
- Steering wheel: Comfort steering wheel
- Fog light
- Package: Driver Assistance Package 1 (High Beam Assistant - Fatigue Warning - Solar Reflect Windscreen - Lane Assistant - Traffic Sign Assistant with Intelligent Cruise Control)
- parking pilot, rear
- Radio: Multimedia radio with 7" touchscreen color display (Automatic music recognition (title, album, artist, cover) for audio devices with USB connection Bluetooth audio streaming Digital radio reception DAB Hands-free system via Bluetooth interface Display of phone book and call lists Pictures/films/videos: Display of pictures via USB interface Smartphone integration via Apple CarPlay, Android Auto via touchscreen or voice control e.g. navigation, music, telephone, reading aloud and dictating text messages 1 USB 8 speakers)
- Safety steering column, height and length adjustable
- seat heating for driver and front passenger
- sun visors driver and passenger side
- Traction Control (TC) Plus
- exterior door handles, in body color
- Central locking with radio remote control

Extra equipment

- trailer coupling, removable
- Luggage compartment partition net APT
- Head-Up Display (Projects speed, settings of the intelligent cruise control and limiter, traffic signs with speed limits and their cancellation, front collision warnings and navigation information into the driver's direct field of vision if desired.)
- Automatic climate control: Two-zone automatic climate control
- Paint finish: metallic
- Keyless locking and starting system Keyless Open & Start
- sun blinds in the 2nd row of seats
- Floor mats in the 2nd and 3rd row of seats
- handbrake, electric
- Glazed tailgate with rear window wiper and heater (and separately opening window)
- interior mirror, automatically dimming
- Interior mirror, additional, for interior monitoring
- IntelliGrip (Adaptive traction system with 5 selectable modes: - ESP off - ESP standard - Snow mode - Mud mode - Sand mode)
- Steering wheel: multifunction leather steering wheel, flattened bottom
- Webasto K0R auxiliary heater



- Socket: 220/230V, in the second row of seats under the passenger seat
- Xenon headlights with LED daytime running lights

Brief expert findings

Documents submitted	At the time of the inspection, the registration certificate part 2 (letter) was available, but the registration certificate part 1 (certificate) was not available. (Copy)
VIN comparison	The vehicle identification number (VIN) was read and its conformity with the documents submitted was established during the inspection by the undersigned.
Inspection	The inspection conditions were sufficient to assess the vehicle. The inspection was carried out using the lighting conditions provided by the photo system included in the report. Lifting equipment and a pit were available for examining the vehicle.
Test drive	No test drive/maneuvering was carried out during the inspection of the vehicle.
Engine function test	An engine test run was performed.
driving readiness	At the time of the inspection, the vehicle was capable of driving and moving under its own power.

Value reducing factors

No.	Component group	Description
1	Door - front right side	Door edge - Scratch(es) - Smart repair
2	Side panel - rear right side	Side panel (Polieren) - Scratch(es) - Cover / polish
3	Misc.	Main inspection - Due - Perform
4	Side panel - rear left side	Side panel - Scratch(es) - Smart repair
5	Sill - left side	Sill - Dent / paintcoat damage - Smart repair
6	Front bumper	Front bumper - Paint defect - Repair and paint

Wear and tear

No.	Component group	Description
1	Mudguard - right side	Mudguard - right side - Stone chips - No deduction
2	Vehicle glazing	Windscreen - Stone chips - No deduction
3	Sliding door - left side	Sliding door - Scratch(es) - No deduction

The vehicle shows signs of wear commensurate with its age and use.

Missing parts

Description

Equipment - Tirefit complete

Order/Scope of order

The order was placed to prepare a sales report for the vehicle described. This includes the following:

- Description of core relevant information about the vehicle
- Documentation of equipment features
(Delivery by third-party service providers)
- Documentation of damage, defects, missing parts
- Documentation of previous damage, unrepaired previous damage, repainting
- a brief visual or functional inspection of the equipment details if possible.
(Functional tests of driver assistance systems are not included in the scope of services!)
- a photo documentation of the vehicle



Basis for the order

This product is based on the Alphabet Fuhrpark GmbH guidelines for vehicle returns and valuations. The expert makes the explicit findings in each individual case objectively within the framework of the specified standards based on his or her own expertise.

The vehicle inspection takes place in a disassembled state.

Damage or defects that can only be detected during disassembly/diagnosis work or through advanced knowledge remain within the scope of the prognosis risk. An extended risk exists for concealed defects caused by fraudulent deception and not identifiable by the expert.

Damage or defects resulting from normal use or wear and tear of the vehicle will be accepted according to the applicable standard.

There was no explicit identification or monetary consideration of the expected features within the product.

Features which in their nature and severity slightly exceed normal use but do not constitute unacceptable damage will be documented and identified under signs of use if necessary.

Damage or defects which, according to the underlying standard, can no longer be attributed to normal use or wear and tear are listed in the product under "Depreciating Factors".

Depending on the product specification, a monetary ID can be provided. If this takes place, the costs can be 100% d or pro rata depending on the vehicle's age and mileage.

Previous damages

Neither repaired nor non-repaired previous damage to the vehicle could be determined.

Comments

- Für den montierten Radsatz wurde kein Nachweiß erbracht.

- Winterradsatz ist kein Bestandteil des Auslieferungsumfangs.



Figure 1: Diagonal front (left)



Figure 2: Diagonal front (right)



Figure 3: Diagonal rear (left)



Figure 4: Diagonal rear (right)



Figure 5: Interior - front



Figure 6: Interior - rear



Figure 7: Instrument cluster



Figure 8: Instrument panel



Figure 9: interior 360° view



Figure 10: Cargo area

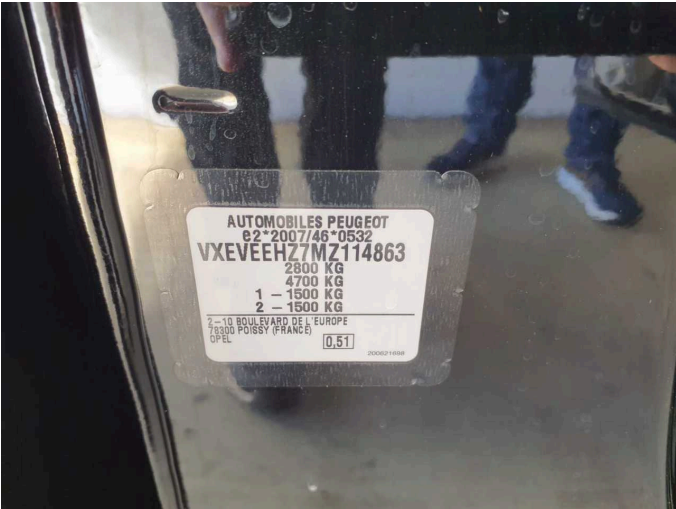


Figure 11: VIN



Figure 12: Mounted tyres

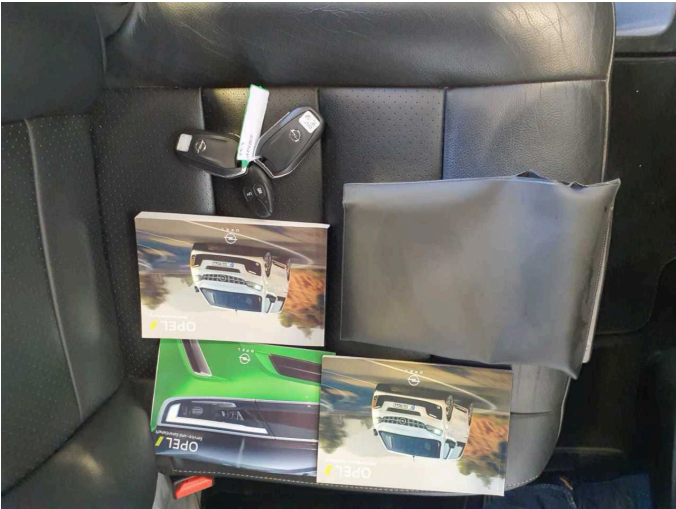


Figure 13: Documents



Figure 14: Additional tyres

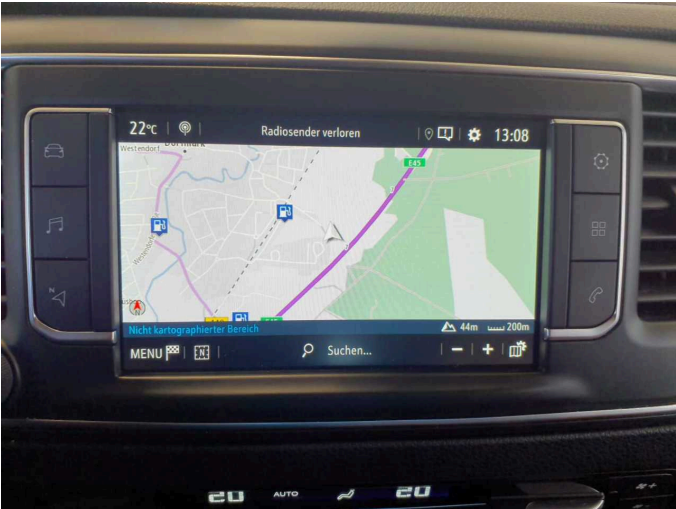


Figure 15: Navigation



Figure 16: Misc.



Figure 17: Misc.

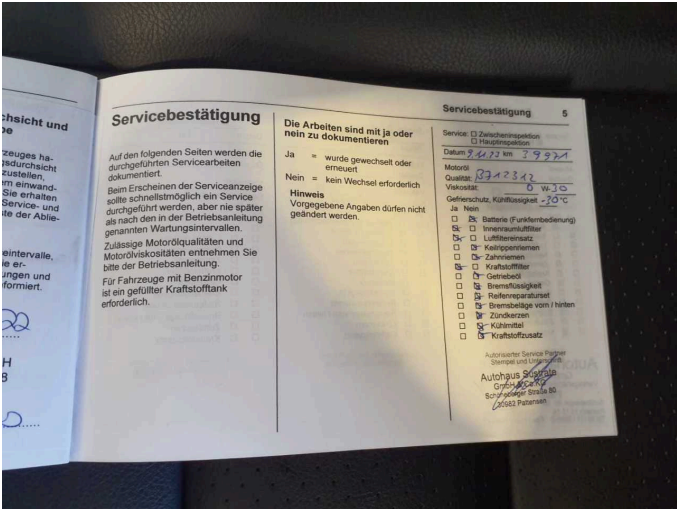


Figure 18: Misc.

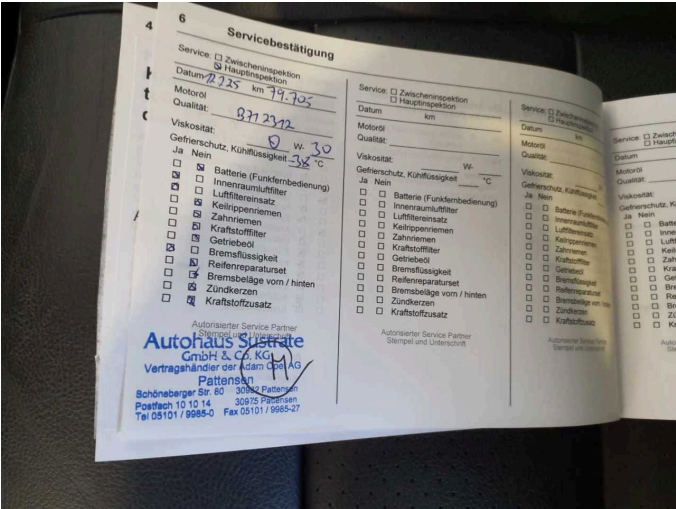


Figure 19: Misc.



Figure 20: Misc.



Figure 21: Misc.



Figure 22: Misc.



Figure 23: Misc.



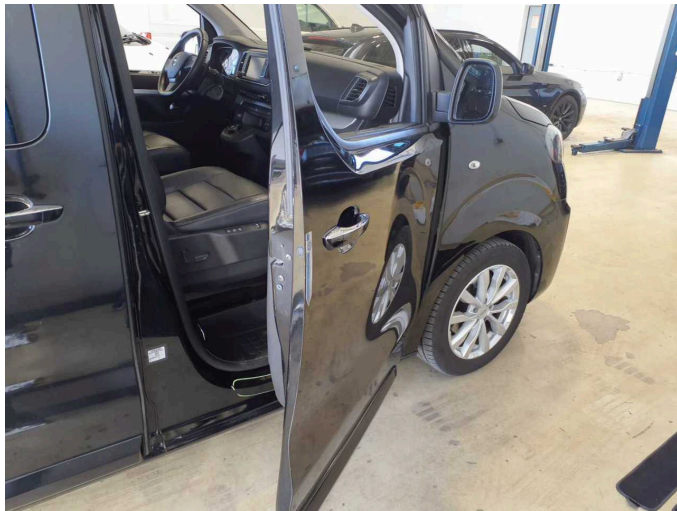
Figure 24: Misc.



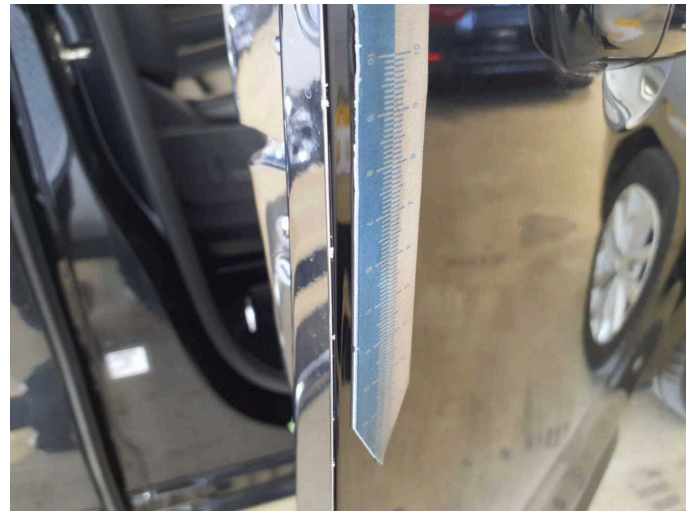
Figure 25: Misc.



Figure 26: Misc.



Damage 1: Door - front right side: Door edge - Scratch(es) - Smart repair



Damage 1: Door - front right side: Door edge - Scratch(es) - Smart repair



Damage 2: Side panel - rear right side: Side panel (Polieren) - Scratch(es) - Cover / polish



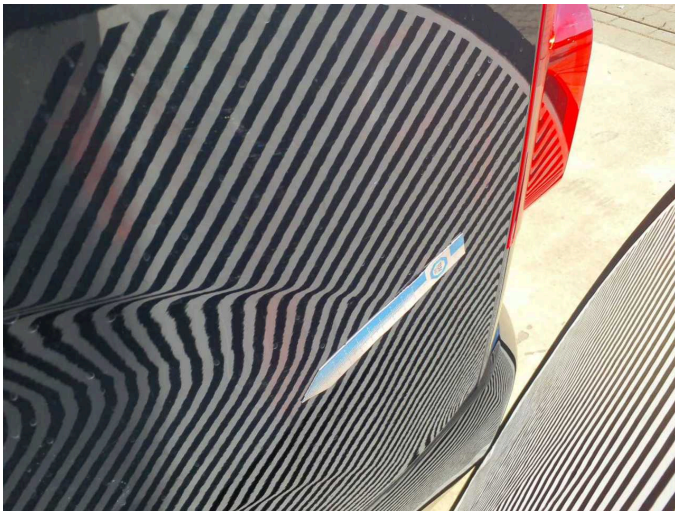
Damage 2: Side panel - rear right side: Side panel (Polieren) - Scratch(es) - Cover / polish



Damage 2: Side panel - rear right side: Side panel (Polieren) - Scratch(es) - Cover / polish



Damage 4: Side panel - rear left side: Side panel - Scratch(es) - Smart repair



Damage 4: Side panel - rear left side: Side panel - Scratch(es) - Smart repair



Damage 4: Side panel - rear left side: Side panel - Scratch(es) - Smart repair



Damage 4: Side panel - rear left side: Side panel - Scratch(es) - Smart repair



Damage 4: Side panel - rear left side: Side panel - Scratch(es) - Smart repair



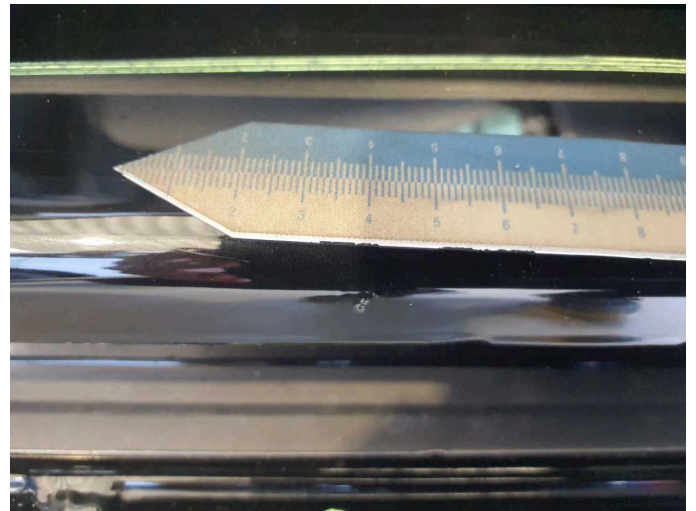
Damage 5: Sill - left side: Sill - Dent / paintcoat damage - Smart repair



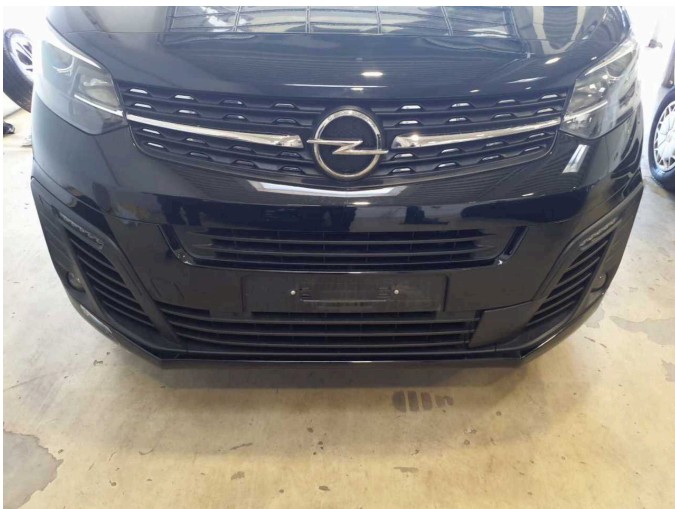
Damage 5: Sill - left side: Sill - Dent / paintcoat damage - Smart repair



Damage 5: Sill - left side: Sill - Dent / paintcoat damage - Smart repair



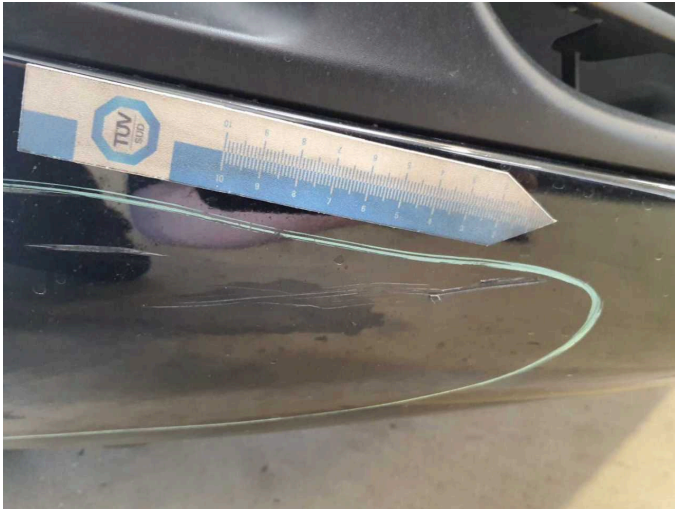
Damage 5: Sill - left side: Sill - Dent / paintcoat damage - Smart repair



Damage 6: Front bumper: Front bumper - Paint defect - Repair and paint



Damage 6: Front bumper: Front bumper - Paint defect - Repair and paint



Damage 6: Front bumper: Front bumper - Paint defect - Repair and paint



Damage 6: Front bumper: Front bumper - Paint defect - Repair and paint



Damage 6: Front bumper: Front bumper - Paint defect - Repair and paint