



Expertise

Protocol number: 41853753
Order number / reference: 25272569
Inspection date: 7 Oct 2025

Manufacturer: Seat	Model: Tarraco 2.0 TDI SCR DSG FR
VIN: VSSZZZKN9RW006592	



Vehicle details	
Manufacturer / Type / Model / Equipment	
Seat Tarraco 2.0 TDI SCR DSG FR	
Vehicle Identification number	VSSZZZKN9RW006592
Mileage (Read)	33,375 km
First registration	18 Jan 2024
Number of holders	1
Next periodical technical inspection	01/2027
(Report not on hand)	
Power / Engine displacement	110 kw / 1,968 ccm
Fuel type / Cylinder	Diesel / 4
Gearbox / Number of gears	Automatic / 7
Type of drive	Front drive
Type of vehicle	SUV
Colour / colour code	Deep Schwarz Metallic
Doors / Seats	5 / 5
Upholstery type	Cloth
Colour of upholstery	Black
Re/Import	no
Driving readiness	Roadworthy



Vehicle details

Maintenance booklet / proof	digital proof / incomplete	Next maintenance in	0 km
Key is / should be	2 / 2	FZG documents	ZB#2 (B) was available (copy), ZB#1 (S) was not available
		Letter No.	GV899777
Previous damage / Accident	None detectable	Repainting	None detectable
Inspection conditions	sufficient	Lifting equipment / pit	yes
Test drive	Not performed	Engine function test	Performed
Driving readiness	Roadworthy		
Manufacturer key number/ type code number	7593 / AOR 03787		
Emission standard	EURO6;WLTP;AP;PI/CI; M, N1 I	Fine dust sticker	
Permitted total weight	2,270 kg	Empty weight	

Tyres

Mounted tyres

#	Tyre size	Type of tyre	Manufacturer	Tread depth
1)	215/55 R17 99H	Winter tyres on Light alloy	Pirelli	6mm / 6mm
2)	215/55 R17 99H	Winter tyres on Light alloy	Pirelli	6mm / 6mm

Replacement

Typ	Tyre size	Type of tyre	Manufacturer	Tread depth
	Tirefit	Expiration date 10/2027		

Legend: Tread depth information for tires on the left is in the first place, for tires on the right is in the second place on the axle in the direction of travel

Equipment

Standard equipment

- 12 V socket at the front
- Storage pocket on the back of the front seats
- Ambient lighting (multi-colored) in the door panels
- Automatic distance control (ACC) up to 210 km/h
- Exterior mirror housing in Cosmo Grey
- Chrome applications in the interior
- Roof rails in black
- Electronic differential lock (XDS)
- Three-point automatic seat belts, front and rear
- Electronic parking brake including auto-hold function
- Electric windows front and rear
- Gear recommendation display
- Luggage compartment cover
- Illuminated glove compartment
- Rear lights in LED technology
- Rear spoiler
- ISOFIX child seat securing system
- Climatronic air conditioning with 3 climate zones and rear control
- Steering wheel: Multifunction steering wheel in leather
- Light sensor with automatic headlight switching
- Fatigue detection
- LED fog lights with cornering light function
- Parking assistant with front and rear parking aid
- Radio accessories: FullLink
- Tire pressure monitoring indicator
- Wheels: Tyre fit
- Rear view camera
- SEAT CONNECT
- Side windows from 2nd row and rear window dark tinted
- Side trim strips in Cosmo Grey
- Seats: Driver's seat electrically adjustable with memory function
- Seats: Sports seats with integrated headrest in the front
- Seats: Front seats with height adjustment
- Sports pedals in aluminum look
- Start-stop technology
- Front door sill plates in aluminum look, illuminated
- Variable luggage compartment floor
- Lashing eyes in the luggage compartment
- Full-LED headlights
- Thermal insulation glazing
- Storage compartment for glasses
- Airbags
- Automatic Coming Home and Leaving Home function
- Exterior mirrors electrically adjustable, folding and heated
- Indicators and welcome light integrated in exterior mirrors
- Black headliner
- Diesel particulate filter and SCR catalyst
- tachometer
- Third brake light
- Electronic Stabilization Control (ESC)
- Footwell lighting
- Luggage compartment, illuminated
- Transmission: 7-speed DSG automatic transmission
- Tailgate electrically operated (opening & closing)
- Rear window wiper and rear window heater
- Interior mirror automatically dimming
- Body covers on the wheel arches
- Headrests, 2 front, 3 rear
- Black radiator grille
- Reading lights, 2 front and 2 rear
- Center console with integrated storage compartment, center armrest cup holder
- Emergency call service
- Upholstery: Fabric/Dinamica
- Rain sensor
- Wheels: 4 "Exclusive II" alloy wheels, high-sheen finish (8.5J x 19 with 255/45 R 19 tires)
- Shift paddles on the steering wheel
- SEAT Drive Profile with "Driving Experience" button and progressive steering
- Power steering, electromechanical
- Seats: Lumbar support for driver and front passenger
- Seats: Rear seat bench can be moved lengthwise and folded asymmetrically
- Sun visors with illuminated make-up mirror
- Lane departure warning system
- Daytime running lights in LED technology
- "Front Assist" environment monitoring system with City Emergency Braking function
- Virtual Cockpit
- Electronic immobilizer
- Central locking, including tailgate, with radio remote control

Extra equipment

- Trailer maneuvering assistant (including park steering assistant with front and rear parking aid)
- Heated and infrared reflective windscreen
- Swiveling tow bar with electric release
- Elimination of the lettering on the tailgate



- Paint finish: metallic
- Navigation system with 9.2" color touchscreen (online infotainment function - prepared for the use of extended mobile online services - voice control - navigation data including MAPCARE - Full Link - Android Auto - Apple CarPlay including Full Link Wireless)
- Package: Winter (XPERIENCE, FR) (heated front seats - heated outer seats of the 2nd row)
- Auxiliary heater including remote control
- Power socket: 230 V socket in the luggage compartment
- Luggage partition net (including remote release for folding the rear seat backrest)
- Package: Storage package (FR) (comfort storage tray on the roof lining - luggage compartment net)
- Package: Driver Assistance Package XL for navigation system (High Beam Assist - Side Assist - Travel Assist - Emergency Assist - Pre-Crash Assist with rollover detection - Heated leather multifunction steering wheel - Traffic Sign Recognition - Adaptive Cruise Control (ACC) up to 210 km/h with predictive cruise control)

Brief expert findings

Documents submitted	At the time of the inspection, the registration certificate Part 2 (letter) was available, but the registration certificate Part 1 (certificate) was not. (Copy)
VIN comparison	The vehicle identification number (VIN) was read from the vehicle and its conformity with the submitted documents was verified during the inspection by the undersigned.
Inspection	The inspection conditions were sufficient for the assessment of the vehicle. Lifting equipment and a pit were available for examining the vehicle.
Test drive	No test drive/maneuvering was carried out during the inspection of the vehicle.
Engine function test	An engine test run was performed.
Driving readiness	The vehicle was drivable at the time of inspection.

Value reducing factors

No.	Component group	Description
1	Misc.	Inspection / maintenance (Nicht vorhanden) - No evidence - No deduction
2	Instrument panel	Indicator light (Reifendruckkontrolle) - on - Perform diagnosis
3	Misc.	Inspection / maintenance - Due - Perform
4	Rear bumper	Rear bumper - Scratched - Paint
5	Door - rear right side	Door - Scratch(es) - Paint

Wear and tear

No.	Component group	Description
1	Vehicle glazing	Windscreen - Stone chips - No deduction
2	Bonnet	Bonnet - Stone chips - No deduction
3	Front bumper	Front bumper - Stone chips - No deduction
4	Interior	Interior - Scratch(es) - No deduction
5	Side panel - rear left side	Sill - Scratch(es) - No deduction

The vehicle shows signs of wear commensurate with its age and use.

Missing parts

Description

2nd wheel set - 2nd wheel set (19" Sommerradsatz)



Order/Scope of order

The order was placed to prepare a sales report for the vehicle described. This includes the following:

- Description of core relevant information about the vehicle
- Documentation of equipment features
(*Delivery by third-party service providers*)
- Documentation of damage, defects, missing parts
- Documentation of previous damage, unrepaired previous damage, repainting
- a brief visual or functional inspection of the equipment details if possible.
(*Functional tests of driver assistance systems are not included in the scope of services!*)
- a photo documentation of the vehicle

Basis for the order

This product is based on the Alphabet Fuhrpark GmbH guidelines for vehicle returns and valuations. The expert makes the explicit findings in each individual case objectively within the framework of the specified standards based on his or her own expertise.

The vehicle inspection takes place in a disassembled state.

Damage or defects that can only be detected during disassembly/diagnosis work or through advanced knowledge remain within the scope of the prognosis risk. An extended risk exists for concealed defects caused by fraudulent deception and not identifiable by the expert.

Damage or defects resulting from normal use or wear and tear of the vehicle will be accepted according to the applicable standard.

There was no explicit identification or monetary consideration of the expected features within the product.

Features which in their nature and severity slightly exceed normal use but do not constitute unacceptable damage will be documented and identified under signs of use if necessary.

Damage or defects that can no longer be attributed to normal use or wear and tear according to the underlying standard are listed in the product under value-reducing factors.

Depending on the product specification, a monetary ID can be provided. If this takes place, the costs can be 100% d or pro rata depending on the vehicle's age and mileage.

Previous damages

Apparently, no repaired previous damage could be found on the vehicle.

Comments

- Für den montierten Radsatz wurde kein Nachweiß erbracht.
- Winterradsatz ist kein Bestandteil des Auslieferungsumfangs.



Figure 1: Diagonal front (left)



Figure 2: Diagonal front (right)



Figure 3: Diagonal rear (left)



Figure 4: Diagonal rear (right)



Figure 5: Interior - front



Figure 6: Interior - rear



Figure 7: Instrument cluster



Figure 8: Instrument panel



Figure 9: Interior 360° view



Figure 10: Cargo area

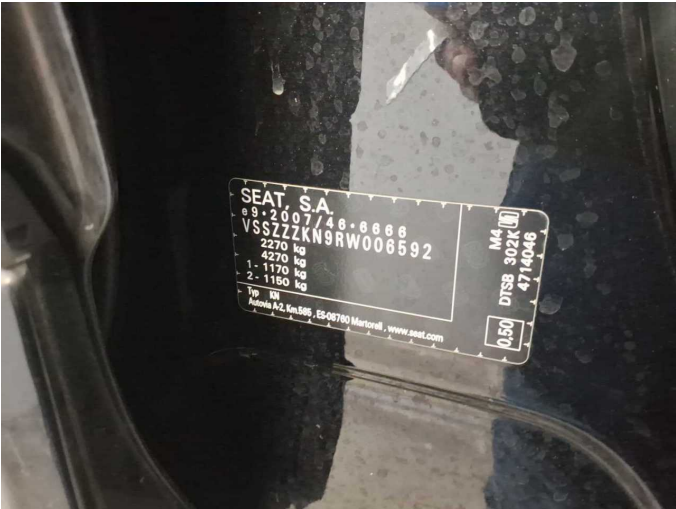


Figure 11: VIN



Figure 12: Mounted tyres

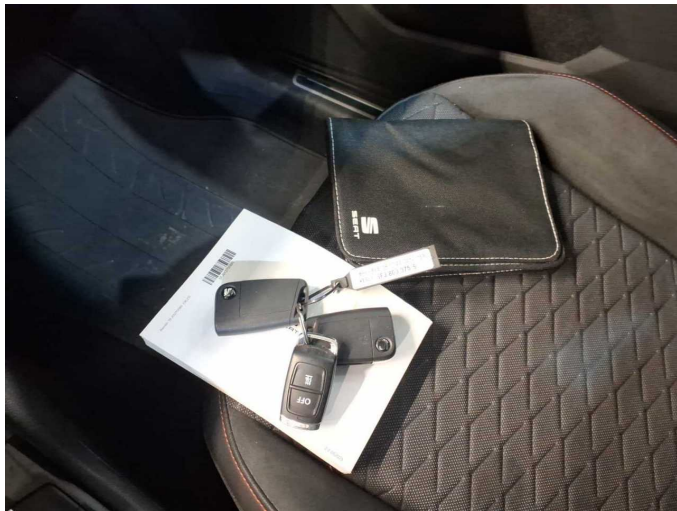


Figure 13: Documents

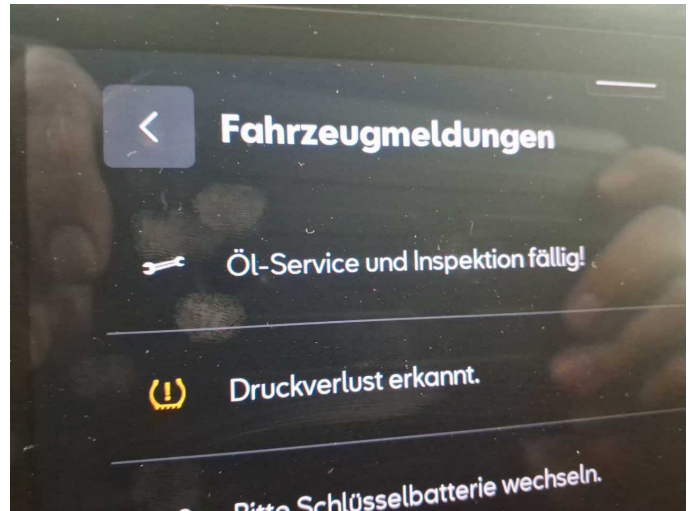


Figure 14: Documents



Figure 15: Navigation



Figure 16: Misc.



Figure 17: Misc.



Figure 18: Misc.



Figure 19: Misc.



Figure 20: Misc.



Figure 21: Misc.



Figure 22: Misc.

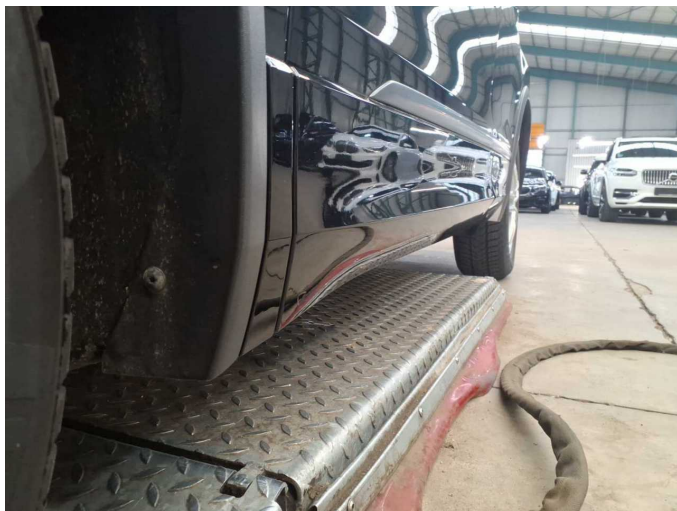


Figure 23: Misc.



Figure 24: Misc.



Figure 25: Misc.



Figure 26: Misc.



Figure 27: Misc.



Figure 28: Misc.

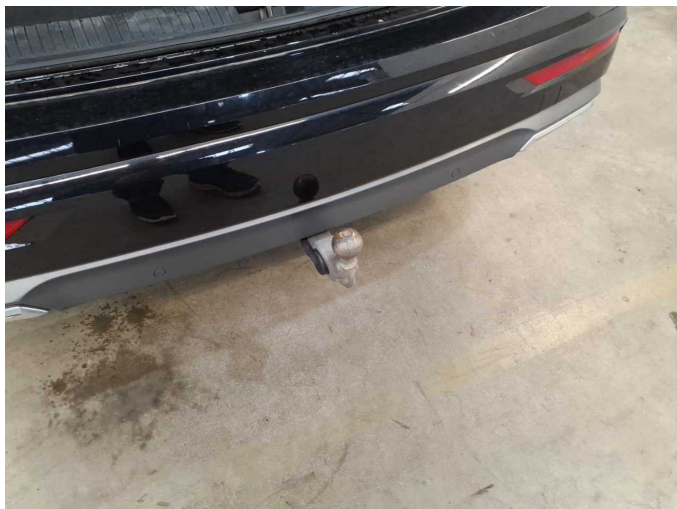


Figure 29: Misc.



Figure 30: Misc.



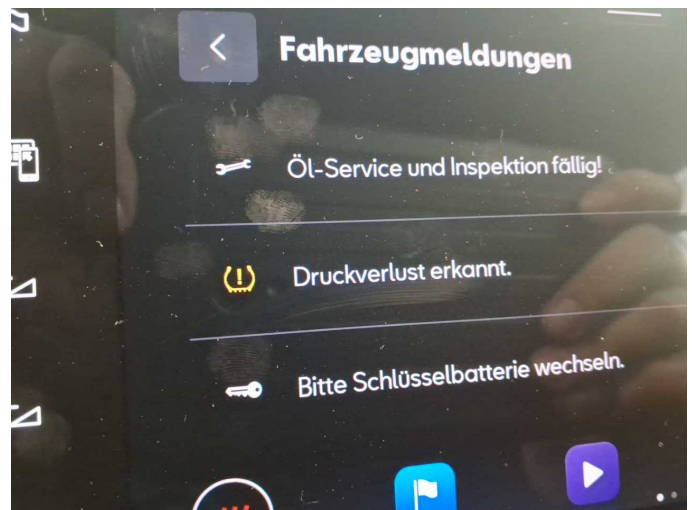
Figure 31: Misc.



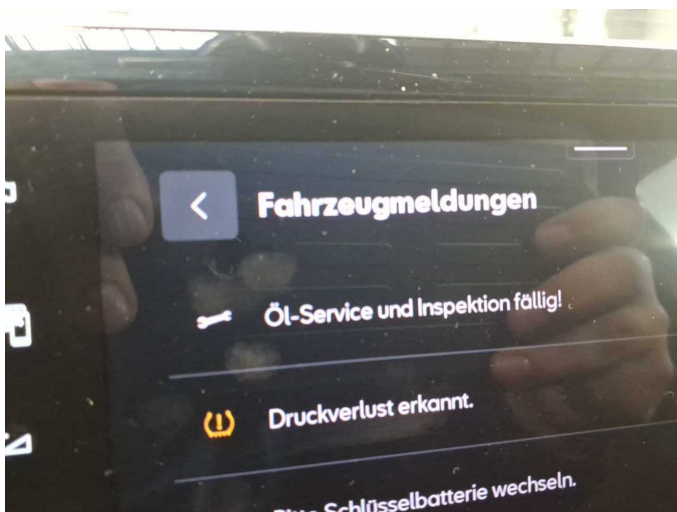
Figure 32: Misc.



Damage 2: Instrument panel: Indicator light (Reifendruckkontrolle) - on - Perform diagnosis



Damage 2: Instrument panel: Indicator light (Reifendruckkontrolle) - on - Perform diagnosis



Damage 3: Misc.: Inspection / maintenance - Due - Perform



Damage 4: Rear bumper: Rear bumper - Scratched - Paint



Damage 4: Rear bumper: Rear bumper - Scratched - Paint



Damage 4: Rear bumper: Rear bumper - Scratched - Paint



Damage 4: Rear bumper: Rear bumper - Scratched - Paint



Damage 4: Rear bumper: Rear bumper - Scratched - Paint



Damage 4: Rear bumper: Rear bumper - Scratched - Paint



Damage 5: Door - rear right side: Door - Scratch(es) - Paint



Damage 5: Door - rear right side: Door - Scratch(es) - Paint